



31 Mar 1931

The Missouri Miner, March 31, 1931

Follow this and additional works at: https://scholarsmine.mst.edu/missouri_miner

These newspapers reflect the attitudes, perspectives, and beliefs of different times. Neither the library nor the university endorses the views expressed in these collections, some of which contain images and language which may be offensive to some readers.

Recommended Citation

"The Missouri Miner, March 31, 1931" (1931). *The Missouri Miner Newspaper*. 632.
https://scholarsmine.mst.edu/missouri_miner/632

This Newspaper is brought to you for free and open access by Scholars' Mine. It has been accepted for inclusion in The Missouri Miner Newspaper by an authorized administrator of Scholars' Mine. This work is protected by U. S. Copyright Law. Unauthorized use including reproduction for redistribution requires the permission of the copyright holder. For more information, please contact scholarsmine@mst.edu.

THE MISSOURI MINER.

Missouri School of Mines and Metallurgy, Rolla, Missouri.

Vol. 17.

Tuesday, March 31, 1931

Number 24

St. Pats Board Shows \$600. Profit

1931 ST. PATS CELEBRATION
EXCEEDS ALL FORMER OC-
CASIONS OF ITS KIND.

Slatz Randall's Orchestra is Out-
standing Feature.

By W. I. Hartnagle.

Twenty-three years ago the first St. Pats celebration was staged at M. S. M. It was truly an humble beginning, this first St. Pats in Rolla, but from its inception it has rapidly grown in elaborateness and in the favor of the students and townspeople so that now it is the most noteworthy event of the school year. To those who had attended and enjoyed previous St. Pats celebrations here, the festivities which occupied so happily the entire student body and guests on March 19, 20, and 21st, were the realization of dreams and also the accomplishment of the supposedly impossible. This year's celebration surpassed all previous celebrations in beauty, splendor and happiness.

James Offutt St. Pat;

Marion McKinley Queen.

Despite the worst that the weather-man could do the entire celebration moved forward smoothly accordingly to the pre-arranged schedule.

At 10 o'clock Friday morning St. Pat arrived at the Union Station. [Dis]embarking from his hand-car of well-worn tradition he immediately mounted a gas chariot of slightly more modern design and proceeded with great dignity to lead a stately procession of his guards and followers including the ever-vigilant QV Kids through the streets of Rolla. Few were the by-standers who were not gripped by the enthusiasm of that happy throng as it marched to the good old Irish tunes so beloved to the good old Patron Saint. Arriving at

Continued on page two.

TRACK SQUAD RAPIDLY
ROUNDING INTO SHAPE.

Grant's Men Look Good

Coach Grant's track men are taking advantage of any decent weather to condition themselves for what promises to be a super-season. The schedule is nearing completion with the first meet scheduled for April 11. A number of new men are out and most of the letter men have returned. With the return of Dave Moulder, a letterman in the pole vault, Coach Grant is assured of a place in the vault position in any meet. Just the past week in a trial meet at Columbia, Moulder vaulted 11' 10 $\frac{3}{4}$ " to equal the best that Mizzou could offer. Hales and Fort, two freshmen, appear capable of filling the shoes of McCreight and Davis on the Relay team. With Coghill and Miller the Miners should again come through with an unbeatable relay team. Moulder's vaulting mate, Kauffman, also is showing good form. Red Brown, another freshman, is bidding

Continued on page two.

TWO SUMMER SURVEYING
COURSES TO BE OFFERED.

The summer surveying course this summer will be divided into two classes, the first meeting from May 25 to June 20 and the second from August 10 to September 5. Students may enroll in either class. Registration for both classes has been started and will be closed on April 15. Any student who wishes to register for either course should secure a blank at the Registrar's Office and fill it out before that date. When this blank is filled out the student will be considered as registered for the course and if he wishes to drop it

Continued on page seven.

WITH SCHMIDT AT HELM, ST.
PAT'S BOARD COMPLETES
SUCCESSFUL VENTURE.

Committees Function Perfectly

Several months ago, after considerable dissention, a new organization was formed on the campus. This organization was made up of representatives from all fraternities, clubs and Independents. This group was known as the St. Pat's Board and was organized for the express purpose of managing the annual St. Patrick celebration. Starting three months late this Board set out to raise enough

Continued on page three

MINER BAND CONCERT
PLEASES

John W. Scott, director of R. O. T. C. Band, led his group of Miner musicians through a program of military and classical band music and instrumental solos to form a program considered the best ever presented by the band since its organization.

A comfortably filled house listened to the program which consisted of the following numbers: March, "Barnum and Bailey's Favorite," King; Overture; Stradella, by Flotow; Saxophone solo, "Estrellita," Ponce; Sing Me To Sleep," by Green, were played by Mr. Wilson; Concerto, "Romance in E Flat," Rubenstein; Novelty, "Scott's Ocarina Band"; Clarinet solo, "Mignon," Thomas, played by Mr. Abshier and accompanied by Mr. Lenz; Song, "Forest Whispers," Dosey; Trumpet solo, "The Perfect Day," Breil, played by Mr. Reeves and accompanied by Mr. Waller; March, "Chicago Tribune," Chambers, and ending with "Star Spangled Banner."

Among the favorites on the above program were "The Barnum and Bailey's Favorite," and the

novelty, "Scott's Ocarina Band." The instrumental ability of Wilson, Abshier and Reeves deserves special mention.

This concert is the annual presentation of the band and has been given as a part of the general lecture series for the past few years.

TRACK SQUAD RAPIDLY ROUNDING INTO SHAPE.

Grant's Men Look Good

Continued from page one.

strong for the mile. That half miler who broke the tape continually last year is with us again for his third season. Coach Grant is expecting Monroe to do still greater wonders. Weigle and Schofield will handle the hurdles, while Weigle also high jumps and Tex broad jumps. Heiligman, a letterman, will jump with Weigle. Koch and Tomlinson will be contenders in the weight contests. With this array and a little support from the school the Miners should have a very successful season.

Track Schedule

April 11—
Quadrangular meet at Columbia.
(Tentative.)
Westminster—Kirkville Teachers
Missouri U.—Miners
April 18—
Kansas Relays at Lawrence.
April 24—
Triangular meet at Rolla.
Central Westminster Miners
May 1—
Springfield Teachers at Rolla.
May 9—
Drury at Springfield (Tentative).
May 15-16—
M. C. A. U. meet at Columbia.
May 22—
Interstate meet at Pittsburg, Kas

1931 ST. PATS CELEBRATION EXCEEDS ALL FORMER OC- CASIONS OF ITS KIND.

Slatz Randall's Orchestra is Outstanding Feature.

Continued from page one.

Parker Hall St. Pat arrayed himself and his retinue of guards and pages upon the stage and proceeded to deliver his annual message of good cheer to the "Faculty, Students and Honest Men" of his

audience. J. J. Offutt, in his impersonation of St. Pat, was good. He lost no opportunity for wisecracks at everyone, did not fail to appreciate by appropriate remarks the feminine beauty present, and presented a very creditable speech.

Considerable difficulty and delay was occasioned by the absence of the Blarney Stone at the crucial moment of the beginning of the knighting ceremonies. A diligent search of the audience by the Kids produced nothing more interesting than a pint bottle of —(vinegar—?) from under the coat of Doc Armsby; but finally the missing stone was found and the knighting ceremonies went on. Few were the senior sons of the Old Man who escaped his ironic comment upon past life and deeds.

St. Pat's Play

Friday afternoon saw the student body and all fair guests assembled again in Parker Hall, this time to witness the production "Madam The Boss" by the M. S. M. Players. It was a three act comedy farce of political intrigue embodying a considerable amount of comedy. A competent cast directed by J. S. Cullison succeeded in putting this part of the St. Pats program over in good style.

Masque Ball

Friday night the major event of the entire celebration took place at Jackling Gym. The Masque Ball, that colorful happy occasion which is always the crowning event of the festivities, with all its incomparable joy, beauty, and splendor started, and midnight approached. Never in the history of all St. Pats affairs had a more colorful, happy crowd gathered under the sign of the Shamrock to do honor to St. Pat and his Queen. Impersonations of all types of characters were to be found among the costumed dancers but no mask or costume served to conceal the joy and youthful abandon of that merrymaking crowd. Before the blare of trumpets announcing the arrival of His Majesty, St. Pat, the laughter and gayety of many happy couples faded to an expectant hush. Then entered the well-beloved Saint. Bent of figure and hoary of beard because of his many years, but no

Continued on page seven.

COME TO

C. D. VIA

The House of A 1000 Values

5c, 10c, 25c GOODS

BOWLING

AT

RECREATION ALLEYS

15 Cents Line

MINERS ESPECIALLY
INVITED

Tournaments—Our Specialties.

J. A. ALLISON JEWELRY STORE

A good place for Students
to play around

YOU ARE ALWAYS WELCOME
ALLISON, The Jeweler
711 PINE STREET

ROLLA SHOE SHOP

Next to Post Office

We are not preachers but we do

save SOLES

W. C. GLAWSON, Prop

JESSYMAE TEA ROOM

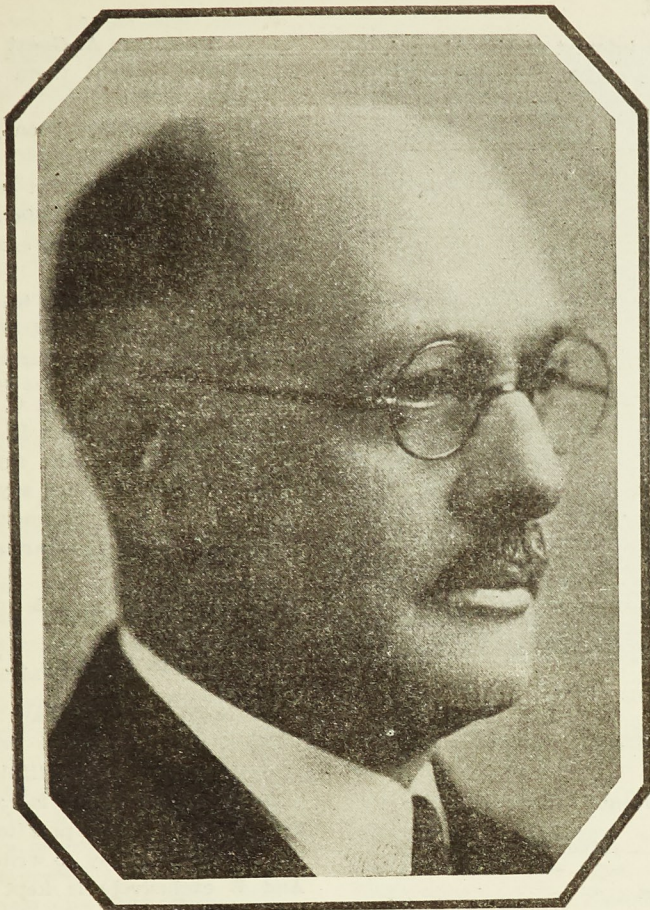
PLATE LUNCHES

SANDWICHES — SALADS

AND

SHORT ORDERS

DR. FULTON HIGHLY HONORED.



Dr. Charles H. Fulton, Director of MSM, who was recently elected chairman of the Engineering Education Committee of the A. I. M. M. E. The committee, at present, is considering the derivation of some method for determining the appi-

tude of prospective students of engineering for that type of work. The object of this is to devise some method by which a young man can tell whether or not he should study to become an engineer.

WITH SCHMIDT AT HELM, ST. PAT'S BOARD COMPLETES SUCCESSFUL VENTURE.

Committees Function Perfectly

Continued from page one.

money to see the celebration thru. Such was the energy and ability of the personnel of this group that now after one of the most successful celebrations in the history of the function, the Board is ready to report all bills paid and a huge profit of \$600 on their venture.

Thru all of the trials and struggles necessitated in raising money for and sponsoring such a celebration the ability and leadership of President Schmidt never faltered. The Board again exercised their good judgment in their selection of the chairmen of the various committees. Every small detail

worked out perfectly and with the undivided support of the student body the new venture turned out a magnificent success.

The profit made this year will be carried over as a starting fund for the celebration next year. In all probability the price of the tickets for the celebration will be lowered next year and the type of entertainment placed on a still higher level.

NOTICE

There will be no program on the General Lectur series this week. The Community Chorus was scheduled to appear but their date has been postponed until the 16th of April.

National Barber Shop

Next Door to National Bank
Speedy Service
Satisfaction Guaranteed

FOR YOUR LIFE INSURANCE

SEE

BOB WILKINS

at RUCKER'S Office
INSURANCE ABSTRACTS
REAL ESTATE

Shoe Repairing

Neatly Done at

ROLLA SAMPLE

SHOE STORE

Sunshine Market

PHONE 71

FREE DELIVERY

We are making

SPECIAL PRICES TO CLUBS

AND FRATS

OR

CANNED FRUITS

AND VEGETABLES

Ask For Price List

CALL HOME

TONIGHT

REDUCED STATION TO

STATION RATES

After 8:30 p. m.

UNITED TELEPHONE CO.

ROLLA, MISSOURI

LEONARD GROCERY

FRUITS AND GROCERIES

709 PINE

THE MISSOURI MINER

A weekly paper published by the students in the interest of the Alumni, Students, and Faculty of the Missouri School of Mines and Metallurgy, Rolla, Missouri.

EDITOR-IN-CHIEF

James Offutt

BUSINESS MANAGER

W. Gallemore

ASSOCIATE EDITORS

R. G. Montgomery

R. E. Pinkley

K. E. Evans

CONTRIBUTING EDITORS

Prof. C. Y. Clayton

H. W. Short, Exchange Editor

Dr. J. W. Barley, Faculty Advisor

E. O. Crawford

SPORTS STAFF

P. B. Prough

Sports Editor

NEWS STAFF

W. T. Kay

G. V. Forsgren

D. P. Hale

E. H. Witter

R. C. Weigel

J. T. M. Smith

BUSINESS STAFF

J. E. Stevens.....Assistant Business Manager

Ed Karraker.....Advertising Manager

Assistant Advertising Managers

J. R. McCaroron, V. Asher, T. Dresser, G. P. Steen, G. M. Warren, B. K. Miller

John McKinley.....Circulation Manager

R. Oswald, H. Haddock, and C. E. Kew

Entered as second class matter April 2, 1915, at the Post Office at Rolla, Missouri, under the Act of March 3, 1879.

Subscription price: Domestic, \$1.50 per year; Foreign, \$2.00
Single copy, 8 cents Issued Every Tuesday

HERE WE GO

Not so long ago the Miner Board had a meeting for the express purpose of electing officers for the ensuing year. A casual glance at the staff listed above may call to one's notice a few changes in the personnel of the officials of this publication.

It is usually customary for each new Board to set forth certain standards and rules which are to be followed with a greater or less degree of accuracy for the year. Customs mean nothing to us and consequently we are now breaking loose from the ties that bind.

Possibly we have a few new ideas which may or may not click. At any rate the paper is for, by, and with the Miners in every move they make. If you don't agree with the style or contents of this paper, we would be more than glad to hear from you. Any comments either assenting or dissenting with our policies will be more than appreciated.

By all means report anything that has even the slightest notion of becoming news. It is impossible for the staff members to get all of the news while its still hot without outside help. We have a good start and with your help we'll try to put out a decent paper.

The above comments are rather rambling and undignified, but we hope the ideas are at least understandable.

REPORT ON THE PROFESSORS

By Edgar A. Guest

I'd always thought them learned men,

Their praises I've been glad to pen,

Although my admiration came

From viewing them afar.

But home from college comes the the boy,

My dreams of greatness to destroy

By telling me what sort of men

His wise professors are.

On his reports I note a C,

Another study bears a D,

At which I sadly shake my head

And to the youngster say:

"It seems to me I've understood

That marks like these aren't very good,

That somewhere on this card of yours

There ought to be an A."

"Professors, dad," he says to me,

"Spell apple with the letter C,

And if a thing is beautiful

They speak of it as fair;

There's not a single prof today

Who knows the way to write an A,

And B exclusively is kept

To spell the word 'beware!'"

SO IT IS SAID

In view of the fact that every year finds more fellows following the sport of tennis this article will not come amiss. M. S. M. is turning out more strongly each year in tennis in spite of the handicaps suffered. It might be said of some fellows that they can't do anything else, in athletics, but play tennis. It seems to the writer that the sport of tennis at M. S. M. deserves the same attention that is given to basketball and track, primarily because of the number who turn out for the game each spring. Just why tennis has been so neglected is somewhat of a mystery.

Three years ago the tennis courts were as good (or rather, not any worse) than they are today. The same backstops were there and just as many pebbles covered the courts. And speaking of backstops, have you noticed the "fence" around the two-by-four flower garden in back of the Chemistry building? Whenever we have a rain the tennis courts resemble duck ponds. A week later the water has just about evaporated, and in

the mean while, rackets have been idle. Now why in the devil can't court conditions improve around here? Why can't a simple drainage system be devised so that water can run down hill and perhaps find some other place to stand, and stand, and stand? Does it cost so much to have a few little ditches dug? Or perhaps the water department would rather use the courts as they are now? They make excellent reservoirs. And how about replacing the backstop which recently blew down, and patching up the rest of the wire?

I know it isn't a question of labor on this campus, but merely an awaiting of orders from some one person who has charge of these things. The campus seems to be getting an awful lot of attention in regard to its flowers and shrubbery, which is all right, but don't sacrifice everything else. I have my doubts as to whether flowers and shrubbery will add more to the beauty than would three clay or concrete courts in order and perfectly aligned with proper backstops, and some fellows playing a stiff doubles match.

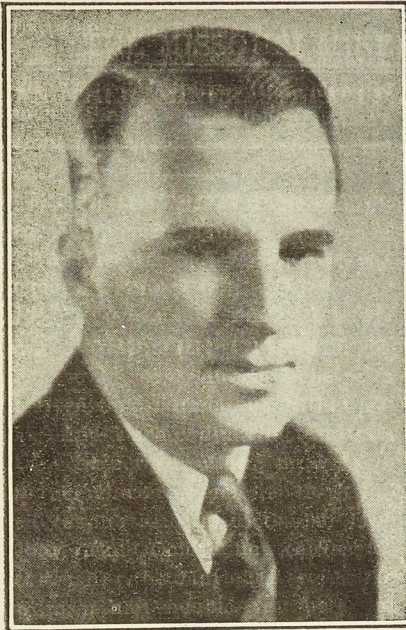
There are plenty of good racket wielders at this school. Just give 'em one tenth the chance you give the football men and see if M. S. M. doesn't have a darn good team representing her in tennis. Dick Hanley won the conference singles championship easily last year and its up to us to defend that title. From what I've seen of teams representing other colleges I think we rate among the top, but the courts are absolutely the worst in the state.

A Tennis Enthusiast.

**Q
U
A
FRANK L. SMITH
I
T
Y**

GROCERIES
Opposite the Post Office
ROLLA, MISSOURI

ANOTHER MINER STEPS UP.



I. W. Alcorn, for the past four years an engineer with the Independent Oil & Gas Co., Tulsa, Okla., has recently been named to head the engineering and research development department of Smith Separator Co., Tulsa. Alcorn, a member of the A. I. M. M. E. and the A. P. I., is a graduate of the Missouri School of Mines. Prior to this training he spent considerable of his time in the oil fields near Marietta, Ohio, and Robinson, Ill., where his father, I. O. Alcorn, was among the early operators. Through its engineering department Smith Separator Company offers its service of a specialized nature to the industry.

Alcorn graduated in Metallurgical Engineering in the class of 1922. He was a member of the Bonanza Club.

THRU THE TRANSIT

By Squint

Here we are under a new regime. The Old Ed has quit and sold out. Last time we saw him he was going to Macon to get his teeth fixed (so he said). A toothache is a convenient excuse but rather insulting to the lady. The last time we saw her she didn't impress as being a toothache.

We're still afraid to pan the New Ed. Don't know how he'll take it yet. He might refuse to print it and might even hold out our salary. (That mythical amount which is known as x3.

Speaking of salaries. Do you know that the average member of the Miner Board spends at least one half hour per week thirty-six weeks per year and for said services receives on buck fifty of the coin of the realm. That makes his hourly rate 8.33 cents. Next time you read a particularly lousy article you can laff and laff and think how much more fun it is to gripe about all the gravy that the Miner Board accumulates on its vest than it is to write for 8.33 cents per hour. And by the way, we forgot to mention that you pay your own salary at the beginning of the semester.

There is nothing more stimulating to that down-to-the-depths feeling that always follows St. Pats than to find a nice flock of unfinished E's on the grade sheets.

This column extends its congratulations to the St. Pats Board on the efficient manner in which they put over the celebration.

While we think about it we'd like to nominate Al Teifenbrum to our Hall of Fame. How anyone can sit on the top of a step-ladder with one foot on the door lintel and sleep is beyond all powers of comprehension.

Last Sunday when all the girls were leaving we had our transit set up down at Rolla Union Station. Believe it or not we didn't observe a tear in a carload. Naturally we were disappointed because we have a penchant for seeing little girls cry. It reminds us of the little girl sitting on a log crying because she had lost her honor. We sat down beside her and—you wouldn't be insulted if you hadn't heard the story before.

The United States is indeed a habit forming nation. In every magazine the advertisements exhort you to form habits of this and that. Did anyone ever have to form an anti-spinach habit? Ask Prof. Orten. Also it might appear that the faculty is forming anti-grade-point habits. What we'd all like to see is a very firmly established anti-eight o'clock habit.

DR. B. R. CONYERS

Dentist

SCHUMAN BUILDING

BOLTS

8 times as strong under super-heat as "before the war"

Trace the evolution of the bolt since 1913 and you trace the amazing post war advance of power and industrial processes . . . and the Crane contribution to help make it possible.

In carefree days "before the war," a steel bolt was a steel bolt. It was made of any easily obtained steel that forged easily and took threads well. Industry moved forward . . . stronger bolts were asked for. Ordinary steels were improved to tensile strength of 45,000 pounds. Not enough. A bolt with forged-on head and tensile strength of 50,000 pounds was developed. Still not enough. Cold rolled steel bolts with tensile strength of 80,000 pounds were offered. They had a tendency to snap.

To fully meet the demands of modern high pressure and temperature technology, Crane Co. brought out for its cast and forged steel materials their Triplex steel stud bolts, of chrome nickel steel with tensile strength of 125,000 pounds. The limit is not yet. Even now, Crane Co. can supply bolts for valve bonnets and flanges with tensile strength of 140,000 pounds and retaining strength at well past 1000° F.

By exhaustive laboratory investigations, long carefully charted creep tests, detailed study of service conditions, Crane metallurgists have helped this development. With the same scientific methods they have as strikingly improved bodies, bonnets, discs and seats, stems, packing boxes . . . so that Crane valves and fittings can be supplied for higher pressures and temperatures than have yet been commercially projected.



CRANE



PIPING MATERIALS TO CONVEY AND CONTROL
STEAM, LIQUIDS, OIL, GAS, CHEMICALS

CRANE CO., GENERAL OFFICES: 836 S. MICHIGAN AVE., CHICAGO
NEW YORK OFFICES: 23 W. 44TH STREET

Branches and Sales Offices in Two Hundred Cities

INTRAMURAL BASEBALL

OPENS UP.

In two weeks the 1931 intramural baseball season will open here at MSM. After some discussion among the coaches and students a new system has been decided upon. This year, there will be two leagues. Each league will be composed of six teams and the winning teams in each league will meet in a championship series at the end of the season.

The teams composing the two leagues are as follows:

League "A"

Independent A
Lambda Chi
Pi Kappa Alpha
Bonanza
Kappa Sigma
Mercier

League "B"

Independent B
Sigma Nu
Prospectors
Faculty
Triangle
Kappa Alpha

The Independent "A" team will be selected from those players whose names start with A to K inclusive. The "B" team will be selected from the remainder.

This year the faculty will have a nine representing them. The faculty team will play in the B League and have, at present, fifteen men who have agreed to play. They are Johns, Gugenheim, Campbell, Rankin, Carlton, Schrenk, Wilson, Throgmorton, Miles, Grant, Rapp, Brown, Dennie, Lieut. Winslow and Sgt. Bertram.

Coach Brown will post the schedules within the week.

NEW RULE REGARDING TRANSCRIPTS.

On account of recent abuses by certain members of the senior class of the privilege of getting transcripts, the administration of the school has adopted a regulation whereby any student may receive one transcript free but will have to pay \$1.00 per copy for further transcripts. This ruling is adopted as a matter of protection to the Registrar's office force. If all seniors made requests like a recent one it would require the full time of the whole force to write transcripts.

Patronize our advertisers.

Followill Drug Co.

See Us for Easter Candies and Flowers

TWO SUMMER SURVEYING COURSES TO BE OFFERED.

Continued from page one.

later he will have to go through the regular procedure for dropping a subject.

No additional fees are charged for this course. For those who enroll in the May class the fees paid for this semester will cover surveying. Those who enroll in August will have to pay their regular fall semester fees when they start the surveying class and these fees will carry them through the first semester.

The credit hours for this course will count as part of this semester's work for those taking the first class and part of the work of the first semester next year for those in the August class.

1931 ST. PAT.

Continued from page two.

less imperious and commanding was he as he strode slowly toward his throne as the orchestra struck up his favorite ballad, "The Wearing Of The Green." Kow Tow!! was the order now of every guard of St. Pat and, as the crowd knelt in reverence the heralds announced the coming of the Queen's court. A procession of exceeding grace and beauty now passed down the aisle toward the throne. There came several former queens of St. Pats: Mrs. H. G. S. Anderson, Miss Elizabeth Long, and Miss Madge Lenox, the retiring Queen. Next came the maids of honor of the various fraternities: Miss Edna Todd of the Kappa Sigma House; Miss Alice Williams, Pi Kappa Alpha; Miss Vivian Langenbacher, Lambda Chi; Mrs. Floy Macklin, Kappa Alpha; Miss Emily McCaw, Sigma Nu; Miss Cecilia Beldon, Prospector; Miss Esther Erickson, Triangle; Miss Eva Leonard, Bonanza; Miss Adelaide Murphy, Merciers; and Miss Genevieve McNicol, Independents.

Amidst great cheering and loud acclaim the regal party entered.

Preceded by the little crown-bearer and two adorable flower girls came Miss Marion McKinley, radiant in her blonde loveliness—the seventeenth Queen of St. Pat. With befitting grace she slowly approached the throne where she was received by St. Pat. Kneeling before him she was crowned Queen of the Court of Love and Beauty.

Following this beautiful ceremony of coronation came the Grand March in which two hundred and fifty couples participated, led by Col. and Mrs. Charles L. Woods. Passing before the royal party in obeisance, the procession wended its way to a close. Following this came the recessional led by St. Pat and his Queen.

Then "Strike Up The Band! and Slatz Randall's Brunswick Recording Orchestra started in the production of such wonderful music as captivated the crowd and added greatly to the striking effect of the riot of color in the hundreds of brilliantly costumed dancers. Here it must be said that the wonderful success of our celebration this year was due in no small measure to the work of the best orchestra that has ever played for a dance at MSM. In fact the pleasant variation between soft dreamy dance music, featured specialties, and the production of swift, snappy jazz so characteristic of this band of music makers, won the heart of every Miner and may be justly termed the feature of the entire celebration. Stars were fading and the eastern horizon was beginning to glow with the promise of dawn when the gym finally stood deserted.

That Saturday morning was occupied chiefly with recuperating, but noon found all revived in body and spirit and the speeding hours brought forth the open-house Tea Dances given by the Sigma Nu's and Kappa Alphas. Following came the formal dinner parties at the various houses on the campus. Once more all was excitement and suspense for the final brilliant event of the celebration.

Formal Ball

At 10:00 o'clock the gym—still

beautifully decorated as on the preceding night, filled rapidly. Never a more beautiful sight than this gathering of lovely maidens dressed in exquisite gowns and the many handsome men—all formally clad. The efforts of the orchestra were even more superlative than before. We are very sure that one young man in Slatz Randall's gang could find a hearty welcome awaiting him in any frat house in Rolla. That would be the little pianoplayer, who so thoroughly won the crowd by his friendly grin and peppy featured songs. When we remember his charming rendition of "Bessie Couldn't Help It" we avow that we just can't blame Bessie.

Reluctantly the guests departed from the gym. A perfect party such as our St. Pats 1931, leaves not only regrets at its ending and memories of unforgettable joy, but also the thrilling hope of another celebration just as perfect. It was a jolly St. Pat.

JIM PIRTLE

WATCHMAKER & JEWELER

We Recommend

GENUINE ZEIGLER COAL

Our Carborated Beverages Excel
We solicit your business

OZARK SUPPLY CO.

PHONE 66

WALLICK'S

Laundries and Dry Cleaners
PHONE 386 We Call & Deliver

WALLER'S BAKERY

Party Orders—A Specialty.

Modern Cleaning Company

Alterations and Repairing

WE CALL AND DELIVER

PHONE 392

FANCY GROCERIES AND MEATS

FRUITS AND VEGETABLES

We Deliver **ASHER & BELL** Phone 17

BILLIARDS

at *Smith's Billiard Hall* Cures Brain and Stomach Fag

MISSOURI CAFE

OPEN DAY AND NIGHT

CHILE AND HAMBERGERS OUR SPECIALTIES

4 DOORS SOUTH STATE BANK

New shipment of Men's Dress and Sport Oxfords

Williams Shoe Store

National Bank of Rolla

SANDWICHES - DINNER - LUNCHES

Everything Good to Eat You Will Find at

Joe Clark's Chile and Waffle House, 703 Pine

EASTER CANDIES AND NOVELTIES

5 cents to \$1.50

EASTER CARDS

5 cents to 25 cents

Faulkner's Drug Store--The Rexall Store

Hotel Edwin Long

Rates, Single \$2.00-\$2.50

Double \$3.00 and \$3.50

Every room a private bath, fire proof—all modern building includes

College Inn & Coffee Shoppe

ACT NOW

PHONE 600

J. E. ASTON, Prop.

ROLLA

STATE

BANK

ROLLA MISSOURI