



17 May 1926

## The Missouri Miner, May 17, 1926

Follow this and additional works at: [https://scholarsmine.mst.edu/missouri\\_miner](https://scholarsmine.mst.edu/missouri_miner)

These newspapers reflect the attitudes, perspectives, and beliefs of different times. Neither the library nor the university endorses the views expressed in these collections, some of which contain images and language which may be offensive to some readers.

---

### Recommended Citation

"The Missouri Miner, May 17, 1926" (1926). *The Missouri Miner Newspaper*. 420.  
[https://scholarsmine.mst.edu/missouri\\_miner/420](https://scholarsmine.mst.edu/missouri_miner/420)

This Newspaper is brought to you for free and open access by Scholars' Mine. It has been accepted for inclusion in The Missouri Miner Newspaper by an authorized administrator of Scholars' Mine. This work is protected by U. S. Copyright Law. Unauthorized use including reproduction for redistribution requires the permission of the copyright holder. For more information, please contact [scholarsmine@mst.edu](mailto:scholarsmine@mst.edu).



Don Fulton

# THE MISSOURI MINER.

Missouri School of Mines and Metallurgy, Rolla, Missouri.

Vol. 12.

Monday, May 17, 1926

No. 33.

## MINER TRACK TEAM DEFEATS DRURY 70-65

### SENIOR MINERS TRIP.

On Monday morning, May 2, a procession of Fords, flivvers and automobiles bearing the embryo mining engineers of the class of '26 departed from St. Louis on the inspection trip. The first stop was at the Bellville, Ill., mine of the Southern Coal, Coke and Mining Co. Here some of the group made their maiden trip into a mine. After tramping through the workings and getting data on mechanical underground loading machines, drills, locomotives and mining methods the gang collected at the shaft bottom expecting to go to the surface when the superintendent calmly announced that luncheon was served. The visitors were led to the motor barn where tables had been set and a fine meal was served. After luncheon the party went on top to inspect the surface plant and then back to St. Louis to see the coal washing plant of the same company in operation, all the while singing the praises of the Southern Coal Coke and Mining Co.

Leaving St. Louis the next morning the pilgrims met at Herculaneum and inspected the Smelter of the St. Joe Lead Co., after which they journeyed to Crystal City and visited the mine and factory of the Pittsburgh Plate Glass Co. Leaving Crystal City the caravan moved on to Bonne Terre and established headquarters for the next three days at the Commercial Hotel. In the lead belt mines and mills of the St. Joe and Desloge companies were visited.

Wednesday evening at Bonne Terre the second annual banquet of the Lead Belt Alumni Association and M. S. M. Seniors was held at the Congregational Church. H. A. Neustaeder, '16, presided as toastmaster and addresses were made by L. A. Delano, '04, the retiring chairman of the association; Charles J. Adami, General Manager of the St. Joe Co.; Prof. C. R. Forbes, Prof. M. H. Thornberry, Prof. G. A. Muilenburg, E. Taylor Campbell, '23, Ray Kollar,

Continued on Page Nine.

### DO YOU KNOW?

Do you know that less than 50 per cent of the students have signed up and paid for Rollamos? Do you know that 40 per cent of those who haven't could do so if they wanted to?

Then do you think that it is quite fair to make the Rollamo's account end in red figures? Perhaps you don't realize the trouble and work connected with the publishing of an annual. But if you do you will know that there is little thanks for the work which is extremely long and tedious.

However, we are not looking for sympathy or thanks. But neither do we want to make any money. We do want to give you a real book and you can be sure that you are going to get it. But we do not think that we should end in a deficit that just a little support on everyone's part would avoid. We are not asking you to give us anything. We are asking you to buy something that you really would like to have.

Let's all kick in now and write that check for \$3.50. It's your duty to support this student undertaking, and please don't hold out on the misunderstanding that you will get the book cheaper next year because you will be disappointed.

Any Alumnus who would like to get a Rollamo fill out this blank and mail at once:

Name.....

Address.....

I enclose check ☐

Send C. O. D. ☐

ELMER GAMMETER,  
Editor-in-Chief.

Shoe: "I hear Smith was expelled from school."

Lace: "Yes, he was caught with a flower in his buttonhole during a botany exam."

—Ex.

### NINE MINERS WIN LETTERS IN HARD-FOUGHT VICTORY.

#### Half-Mile Relay Team Scores Deciding Points for Miners.

The Miners staged a strenuous battle for track honors last Friday against the Drury Panthers in a dual meet that was a toss-up until the final event. With the point score at 65 all only the half mile relay remained on the program. Thompson and Ledford battled the first two Panthers evenly and G. W. Johnson opened up a five yard gap on the third leg of the relay and E. C. Smith took the baton to tear around and break the tape with a ten yard advantage and the meet winning points.

Throughout the sixteen events on the program the Miners and Panthers struggled tenaciously for the lead with only a few points difference in total points. Elton Emith of Drury was the individual satillite with fifteen points to his credit while E. C. Smith and Tamm with ten points and C. W. Johnson with nine were the Miner luminaries.

Nine Miner wearers of the spiked shoe won track letters in this meet. E. C. Smith, C. W. Johnson, G. C. Johnson, M. Ledford, B. R. Thompson, J. Lee, D. Moulder, Tamm, and Snider earned the right to wear the track "M" in battling the Panthers.

#### Summaries:

100-yd. dash—Thompson (M) first, Goss (D) second, Ledford (M) third, Time, 10.7 seconds.

Mile run—Davidson (D) first, Evans (D) second, Osterwald (M) third, Time, 4 minutes 49.1 seconds.

440-yd. dash—G. Johnson (M) first, Phillips (D) second, De la Porte (D) third, Time 54.5 seconds.

120-yd. high hurdle—Tamm (M) first, E. Smith (D) second, Krider (D) third, Time, 17.5 seconds.

880-yd. run—Silesby (D) first, Davidson (D) second, Schneider (M) third, Time, 2 minutes 8 seconds.

220-yd. dash—C. S. Smith (M) first, Goss (D) second, Thompson



## SPORTING SECTION

(M) third. Time, 23.8 seconds.

Two-mile run—B. McKinley (D) first, E. McKinley (D) second, Ambler (M) third. Time, 10 minutes 25.5 seconds.

220-yd. low hurdles—C. S. Smith (M) first, Tamm (M) second, E. Smith (D) third. Time, 27.7 seconds.

One-mile relay—Won by Drury (Evans, Gardner, McCrosky, Davidson.) Time, 3 minutes 42.5 seconds.

Half-mile relay—Won by Miners (Thompson, Ledford, Smith, Johnson). Time, 1 minute 36 seconds.

Pole vault—Moulder (M) first, E. Smith (D) second. Height 10 ft. 6 in.

Shot put—C. Johnson, (M) and Wheately (D) tied for first, Bolon (M) third. Distance, 38 ft. 6 in.

High jump—E. Smith (D) first, Tamm (M) and D. Smith (M) tied for second. Height 5 ft. 8 in.

Discus throw—Lee (M) first, C. Johnson (M) second, Wheately (D) third. Distance, 115 ft. 11 1-2 in.

Broad jump—Schneider (M) first, E. Smith (D) second, C. Johnson (M) third. Distance, 19 ft 2 in.

Javelin throw—Wheately (D) first, Shay (M) second, C. Johnson (M) third. Distance 148 ft 10 in.

## ATHLETIC ASSOCIATION

## ELECTION FRIDAY.

The Senior Council will hold the Athletic Association election on Friday of this week in Parker Hall. The President and Manager of the Athletic Association are the offices to be filled.

The following nominations were made by the Board of Control according to the work merit system adopted a few years ago:

President—C. F. Boismenue.

L. A. Cutter.

Manager—W. R. Rushmore.

Where more than one name appears above they are listed according to merit. It is customary, also, that when two men are up for the Presidency that the man with the least number of votes be declared Vice-President.

The Board of Control also named the following men: Ambler, Metcalf, Moreland, Counts and Linquist, as Junior Assistants, and Moulder, Hanley, Reeves, Christine, Gibson, Harrod, Meshevsky, Hollow, Jarboe and Dittmer as Sophomore Assistants for next year.

TRIPLE TIE FOR LEAD IN  
INTRA-MURAL SERIES.

The defeats of the Independents and the Prospectors during the past week throws them into a tie with the Kappa Sigs for leadership in the intramural gonfalon chase. The meeting of the Prospectors and the Independents this week should eliminate one of that duet from the tie, and make it a two-team race.

The Lambda Chis slugged their road to a 24 to 16 victory over the Profs in the first game of the week, with Halows on the mound and Burg behind the platter. Zeuch and Jackson battered for the Faculty.

Huebner southpawed the Merciers to a win over the Pi K. A., with Donze on the receiving end. Gifford and Morris were the losers' battery in the 11 to 3 verdict.

The Independents and Kappa Sigs locked horns in Wednesday's tussle, and last year's champs emerged from a 9-inning fracas with a 6 to 5 triumph. Both Smith for the winners and Weiss for the Independents twirled good ball but errors played a large part in the score. Young backstopped for Smith, and De la Pena was behind the plate for the Independents.

The Sigma Nus broke the Prospector's string of wins by downing them 15 to 6. Ledford's slants were effective for the winners, with T. Smith receiving, and C. Smith and Metcalf started for the Prospectors.

In Saturday's Faculty vs. K. A. combat the horsehide was mauled by both teams, and the K. A.'s won, 17 to 13. Holman and Ragland were the winning battery, and Zeuch was the first of the Profs trio of hurlers to take the slab, with Jackson supporting.

The Merciers won their second victory of the week by subduing the Grubstakers, 13 to 6. Huebner and Donze were the winning battery, while Mariner and Miller worked in the losers' battery department.

The Grubstakers lost their second game of the day Sunday when the Lambda Chis won, 7 to 4. Thomas and Tucker battered for the winners, while Gammeter supported by Mariner were the Grubstakers' duet.

## SPORTSMANSHIP.

In line with the baseball rules

printed on this page it is also well to remember that the intra-mural series is to promote a spirit of fair play and accord between the contending teams. The umpires of the present season have come in for a goodly share of

What Is  
A Life  
Underwriter?

One who executes and delivers a life insurance policy. In other words, a person whose business it is to offer the known benefits of life insurance to individuals, to corporations, to partnerships, etc.

But further, the life underwriter is one who must convince those clients of the benefits offered. This means stimulating contact with human character, and with large affairs. Some underwriters prefer the game of character and deal mainly with individuals. Others prefer affairs; to them is open the great field of business insurance.

Furthermore, the business of life underwriting pays highly for initiative and ability.

And still more, the life underwriter offers to his client a commodity which has no risk in it, does not deteriorate, and adds no burden of mental worry. The life underwriter sells absolute security, the foundation of serenity of mind.

It is worth while to think these things over now and to remember them when, perhaps, you find yourself wrongly placed in whatever business you may have chosen.

You can obtain confidential information from the Inquiry Bureau, John Hancock Mutual Life Insurance Co., 197 Clarendon St., Boston, Mass.

*John Hancock*  
MUTUAL  
LIFE INSURANCE COMPANY  
OF BOSTON, MASSACHUSETTS

A STRONG COMPANY, Over Sixty Years  
in Business. Liberal as to Contract,  
Safe and Secure in Every Way.



hazzberries on a number of occasions, but it is well to remember that they receive no recompense for their work and, as they are agreed upon by both teams, they are putting themselves to trouble for the benefit of the contending teams. Umpires are usually considered human off the field and we believe they are the same on the field of combat.

#### MINER TRACKMEN TREK TO STATE MEET.

Coach Dennie and a sextet of Miner spiked shoe wearers will take the trip to the State meet at Cameron, Mo. The half-mile relay team, consisting of Thompson, Ledford, G. W. Johnson, and Smith, with Moulder in the pole vault, and C. W. Johnson in the shot put, will carry the Miners' colors at Cameron.

The meet will be held this Thursday, Friday and Saturday, with the finals on Saturday.

#### AN EXPLANATION AND QUOTATIONS OF SOME BASEBALL RULES COVERING QUESTIONS THAT HAVE COME UP DURING OUR BASEBALL GAMES.

##### Infield Fly.

The batsman is out if, before two men are out, while first and second or first, second and third bases are occupied, he hits a fair fly ball, other than a line drive, that can be handled by an infielder. In such case, the umpire should, as soon as the ball is hit, declare it an infield or out-field fly. Any attempt to bunt, which results in a fair fly ball, shall not be regarded as an infield fly.

##### Interference:

##### By Catcher:

Batsman becomes base-runner if the catcher interfere with him in or prevents him from striking at a pitched ball.

##### By Batsman:

Batsman is out if he attempts to hinder the catcher from fielding or throwing a ball by stepping outside the lines of the batsman's position or in any way obstructing or interfering with that player, except that the batsman shall not be out under this rule if the baseman be declared out as follows:

a. If with one or no one out and the baseman on third base, the batsman interferes with a play being made at home plate, the base runner shall be declared out.

##### Entitled to Base:

Base-runner shall be entitled to the base if he be prevented from making

a base by the obstruction of the fielder, unless the latter had the ball in his hand ready to touch the base-runner.

##### Game Called on Account of

##### Darkness or Rain.

It is a regulation game provided five or more equal innings have been played or the Club second at bat shall have made more runs at the end of its Fourth inning or before the completion of its Fifth inning than the Club first at bat has made in five complete innings.

##### Delay of Game.

After the batsman has taken his position, the pitcher is allowed twenty seconds to deliver the ball. Otherwise, the umpire shall call a ball.

Batted ball striking batter while still in batter's box, is a foul the same as hitting any other player on foul ground.

##### Balks:

Any motion made by the pitcher while in position to deliver the ball to the bat without delivering it, or to throw to first base when occupied by a base-runner without completing the throw.

Throwing the ball by the pitcher to any base to catch the base-runner without stepping directly toward such base, in the act of making such throw.

Making any motion to pitch while standing in his position without having the ball in his possession; or regardless of whether he makes any motion to pitch or not, if the pitcher takes a legal position on the pitcher's plate without the ball in his position, or if he takes a position off the pitcher's plate and feints to deliver the ball to the bat.

Making any motion of the arm, shoulder, hip or body the pitcher habitually makes in his method of delivery, without immediately delivering the ball to the bat.

##### Entitled to Bases:

A man occupying a base is entitled to that base and cannot be forced to vacate by following runner, except in case of the batsman becoming a base-runner. If a base-runner advance to a base already occupied by base-runner the former is entitled to return to the base from which he came, but is liable to be put out if touched by ball returning to base.

##### Scoring of Runs:

One run shall be scored every time a base-runner, after having legally touched the first three bases, shall legally touch the home base before three men are put out; provided, however, that if he reach home on or during a play which the third man

be forced out or be put out before reaching first base, a run shall not count.

#### THE LEAGUE STANDING.

	W.	L.	Pct.
Independents .....	6	1	857
Prospectors .....	6	1	857
Kappa Sigma.....	6	1	857
Lambda Chi Alpha..	4	3	571
Merciers .....	4	3	571
Faculty .....	4	4	500
Kappa Alpha.....	4	4	500
Sigma Nu.....	3	4	428
Bonanzas .....	1	6	145
Pi Kappa Alpha.....	1	6	145
Grubstakers .....	1	7	125

##### Next Eight Games.

Bonanza vs. Pi K. A.

Prospectors vs. Independents.

Lambda Chi Alpha vs. Sigma Nu.

Faculty vs. Merciers.

Kappa Sigma vs. Kappa Alpha.

Pi Kappa Alpha vs. Grubstakers.

Bonanza vs. Independents.

Lambda Chi Alpha vs. Merciers.

Soph: "What's the difference between a fish and a fool?"

Fresh: "I'll bite, what's the difference?"

Soph: "If you bite there isn't any."

—Ex.

#### SAME GRADE OF

### BATHING SUITS

#### FOR LESS

#### AT

## SCHUMANS

SEE OUR SIDE WINDOW

FOR LATEST IN STRAWS

#### OUR

### MASTER BARBERS

DON'T SING THEIR OWN  
PRAISES

THEY ATTEND TO THEIR  
BUSINESS QUIETLY AND  
COURTEOUSLY

—THE CUSTOMERS DO THE  
PRAISING

AND HAROLD DOES THE  
SHINING

BUNCH BARBER SHOP



## THE MISSOURI MINER.

The Official Publication of the  
M. S. M. Alumni Association.

A weekly paper published by the Students, in the interest of the Alumni, Students, and Faculty of the Missouri School of Mines and Metallurgy, Rolla, Mo.

Entered as second class matter April 2, 1915, at the Post Office at Rolla, Missouri, under the Act of March 3, 1879.

## STAFF.

E. C. Miller.....Editor  
C. F. Luckfield.....Business Manager  
News Department.

Howard Histed.....Associate Editor  
Prof. C. Y. Clayton.....Alumni  
E. R. Cushing.....Sports  
M. E. Suhre.....Assistant  
J. H. Reid.....Assistant

## Features Department.

W. C. Keniston.....Associate Editor  
R. S. Reich.....Exchanges  
J. E. McCauley.....Assistant  
J. H. Brickner.....Assistant

## Business Management.

R. A. McReynolds Asst. Business Mgr.  
R. P. Baumgartner Advertising Mgr.  
K. R. Neal.....Asst. Advertising Mgr.  
P. T. Delano.....Asst. Advertising Mgr.  
H. B. Moreland.....Circulation Mgr.  
C. W. Ambler Asst. Circulation Mgr.  
M. B. Layne.....Asst. Circulation Mgr.

Dr. J. W. Barley.....Faculty Advisor

Subscription price: Domestic, \$1.50 per year; Foreign, \$2.00. Single Copy, 8 cents.

Issued Every Monday.

## SENIOR METALLURGISTS TRIP.

The trip was made by the following: Prof. H. R. Hanley, Walter Remmers, graduate, and now instructor at Washington U.; T. H. Kennedy, R. K. Miller, and Elmer Gam-meter, Senior Metallurgists and C. A. Anderson, Senior Mechanical.

We arrived in Milwaukee, Sunday night and started our first trip early the next morning bright and early and cold. We first visited the Allis-Chalmers Manufacturing Company, a very large concern, and since their manufacture is chiefly mining and milling machinery, turbines, generators, etc., we had a very interesting trip.

We left there for the A. O. Smith Company, automobile chassis manufacturers. Their work consists of some thirty operations, only about four of which were hand controlled

so that we were able to see some of the finest examples of modern process machine operation.

The following day we visited the Bucyrus Steam Shovel and Dredge Company where we enjoyed a very nice trip. Their work included large steel casting using open hearths and electric furnaces. After lunch at the company we were shown films of their products in operation. The trip was well planned and guided and we enjoyed it very much. After an interesting trip to Nash Motors we left Milwaukee for Kenosha.

Here we visited the American Brass Company. This large concern manufactures about everything in brass covering, rolling, tubing, stamping, and pressing operations, as well as copper wire drawing. Their organized production also added interest to the trip.

We left there for Chicago, and, arriving in Chicago, we hurried to the Alumni Banquet. It was fine to see the bunch that turned out for this, a large number of whom we knew. In an interesting talk Mr. Hynes stated that back in his day St. Pat wouldn't let a Senior get away until his crook had left a real conspicuous bump on his head, and that he would like to see the custom continued. "Cap" Hanley, who spoke next, said that he didn't think much of the custom. We concluded the evening by chatting and smoking in the very cozy rooms of the Chicago Engineer's Club.

The next day we went with the C. E.'s to Gary, Indiana, to visit the Illinois Steel Works. This plant is the largest steel plant in the world and we were very interested. It operates 12 blast furnaces, 2 Bessemers and about 48 open hearth furnaces. We could have easily spent a week here without repeating.

Friday morning we visited the International Lead Refining Company. This offered a fine plant illustrative of Parke's Process of Desilverization of Lead. That afternoon we took a hurried trip through the Grasselli Chemical Company. The roasting of Zinc Blende in a Haeggler Kiln and the manufacture of Sulphuric Acid were the more interesting features of that trip.

Saturday morning we visited the Western Electric Company under the guidance of Reginald Dean and Walter Scott. These men gave us some fine pointers on this immense concern, but as the plant closed at noon we had to cut our trip short.

We left for home, Rolla, or else-

where, a much poorer but a much wiser bunch.

We would again like to express our sincere thanks to those who helped to make our trip so pleasant and interesting and we hope that we can do as much for future Seniors as they did for us.

He was seated in her parlor,  
And he said unto the light,  
"Either you or I, old chappy,  
Will be turned out tonight."

Patronize our Advertisers.

## ZAUN'S BILLIARD HALL

8TH AND PINE

SAME OLD SERVICE

COLD DRINKS      SMOKES  
PEANUTS

DEPOSIT WITH

## MERCHANTS & FARMERS BANK

BIG, STRONG, SERVICEABLE

## E. E. SEASE TAILORING CLEANING AND PRESSING

PHONE 188

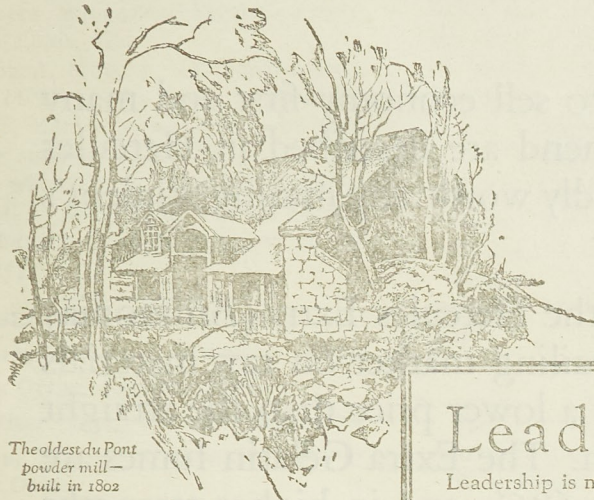
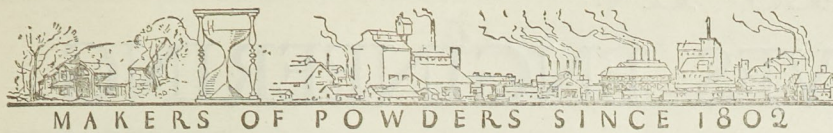
TRY US ON A RUSH ORDER

## JIM PIRTLE

WATCHMAKER AND JEWELER

Fine Repair Work A Specialty  
33 Years Experience  
20 Successive Years in Rolla.





## Leadership

Leadership is measured by service. For nearly a century and a quarter, the du Pont name has signified leadership in explosives manufacture on this continent.

Paralleling the rapid growth of American industry, the du Pont Company has developed explosives to meet new needs and solve new problems that industry might be served.

Practical and authoritative information on modern explosives is embodied in the "Blasters' Handbook"—now used by instructors and students in many leading technical institutions throughout the country. A copy will be sent free upon request.

E. I. DUPONT DENEMOURS & CO., Inc.  
Explosives Department  
Wilmington, Delaware



Partial view of Repauno Plant, one of the largest explosives plants of the du Pont Company.

## 123 YEARS OF LEADERSHIP IN THE SERVICE OF INDUSTRY

### CALIFORNIA HYDRO-ELECTRIC DEVELOPMENT DISCUSSED BY VEACH.

R. L. Veach of Black & Veach, Consulting Engineers, Kansas City, gave an educational, illustrated talk on the hydro-electric projects of California before the junior and senior students last Tuesday in the general geology lecture room.

First hand information supplement-

ed by slides showing the various projects converting the rivers with headwaters in the Sierra Nevada Mountains into irrigation, electrical, and water supply use for the cities on the coast of California some two hundred miles distant. California is the leading state in hydro-electric development and Mr. Veach's discussion of the subject was of considerable interest to engineers.

### UNIVERSITY OF MICHIGAN CON- FERS HONORS ON PROFESSOR C. E. BARDSLEY.

Professor C. E. Bardsley took his seat with Phi Beta Kappa's, Sigma Xi's, Tau Beta Pi's, Order of the Coif, etc., at the Third Annual Honors Convocation of the University of Michigan, held on May 5th, 1926.

It was a great surprise to Professor Bardsley to be honored when there are ten thousand students at the university.

"In recognition of your superior scholastic attainments during your attendance at the University of Michigan," wrote the Committee on Honors Convocation, "you have been designated as an Honor Student at the Third Annual Honors Convocation to be held in Hill Auditorium on Wednesday, May Fifth, Nineteen Hundred and Twenty-six, at Eleven o'clock."

The University faculty reviewed three hundred honor students, Dean Alfred H. Lloyd of the Graduate School, presiding. Ex-President Lynn H. Hough, of Northwestern University, gave the Honors Convocation Address, "The Triumph of Education Over Ignorance a Continuous Battle." Over five thousand sang "The Yellow and Blue" to the strains of the University's huge pipe organ. Honor students were assigned reserved seats in the center section of Hill Auditorium.

Three years ago President Burton (deceased) inaugurated the first Honors Convocation at Michigan, and set aside a time to do honor to scholastic attainment, that high scholarship might not be an empty honor. Since that time a number of the universities of America have followed Michigan's lead. President Burton saw that athletics had its honor days, and conceived the idea, why not an honor day for scholastic attainment, the real mission of the university?

Bardsley was of the Class of '20 and later was Assistant Professor of Topographical Engineering in the Vocational Department at M. S. M.

Professor Bardsley has been on leave of absence from the faculty of the School of Mines the past year for advanced study and research. He will resume his active duties at M. S. M. in September.

He: "Something seems to be wrong with this engine, it—"

She: "Don't talk foolish, wait until we get off this main road."

Subscribe for The Miner.



# OPPORTUNITIES IN EXPLOSIVES ENGINEERING



**EXPLOSIVES** engineering is a branch of the mining profession which offers great opportunities for the man who knows how to reduce blasting costs.

Hercules salesmen are taught to sell economy first and many of the explosives and methods they recommend are described in Hercules publications and advertisements. It is decidedly worth any mining student's time to become familiar with these.

For instance, we are now recommending the Hercules Extra (Ammonia) Gelatins to many users of gelatin. The prevailing market on raw materials again makes it possible to sell these grades at a lower price than the straight gelatins. The two grades are equal in strength. The Extra Gelatin fumes are as good in all strengths up to and including 60%, and in higher strengths they are better. On most jobs, the same blasting results are obtained with Hercules Extra Gelatins, but their use insures a gratifying saving in cost.

The introduction of Hercules Special No. 3 is another money-saving contribution to the blasting industries. This explosive costs less than other dynamites it often replaces in underground mining. It was developed to effect economies underground comparable with those made possible in surface work with Hercules Special No. 1.

These are but two out of a number of Hercules suggestions for reducing costs. We will furnish mining students with booklets that tell of interesting developments in Explosives Engineering. Use the coupon below.

## **HERCULES POWDER COMPANY** (INCORPORATED)

*Dynamite   ~   Permissible Explosives   ~   Blasting Powder   ~   Blasting Supplies*

ALLENTOWN, PA.  
BIRMINGHAM  
BUFFALO  
CHATTANOOGA  
CHICAGO

WILKES-BARRE

DENVER  
DULUTH  
HAZLETON, PA.  
HUNTINGTON, W. VA.  
JOPLIN, MO.

LOS ANGELES  
LOUISVILLE  
NEW YORK CITY  
NORRISTOWN, PA.  
PITTSBURG, KAN.

WILMINGTON, DEL.

PITTSBURGH  
POTTSVILLE, PA.  
ST. LOUIS  
SALT LAKE CITY  
SAN FRANCISCO

HERCULES POWDER COMPANY,  
941 King Street,  
Wilmington, Delaware.

Please send me free, the booklets checked below:—

- ☐ How to Produce More Lump Coal by Cushioned Blasting.
- ☐ Effect of Cartridge Diameter on the Efficiency of Explosives.
- ☐ Safety in the Use of Explosives.
- ☐ A sample copy of "The Explosives Engineer".

Name . . . . .  
College . . . . .  
Class . . . . .  
Street . . . . .  
City . . . . .  
State . . . . .

Arthu  
ent loca  
Harry  
Southern  
at St. Lo  
John  
ent of  
Monte, A  
of his su  
dress wi  
he will b  
who hap  
country.

SEN  
Harry  
neer's O  
Walte  
Office,  
field, Oh  
Charles  
Smelting  
Wm.  
clair Oil  
Edwar  
pany, Tu  
Dryde  
Harvard  
Danie  
neering  
Fla.  
Wm.  
East St.  
Mike  
Compan  
C. C.  
Rancagu  
W. Ir  
Co., Pitt  
Morris  
ucts Co.,  
Ronald  
neer, Ha  
Degan  
Co., Roc

R. A  
Mrs.  
Pherson  
marriage  
J., to R  
Mr. and  
Emilie  
young c  
April 4  
years old  
to have  
Johnson,  
student a  
where he



## ALUMNI NEWS

HOME-COMING OCTOBER 14-15-16

## ALUMNI.

Arthur Neustaedter, '84, is at present located at Plasterco, Virginia.

Harry H. Kessler is now with the Southern Manganese Steel Company at St. Louis, Mo.

John A. Murphy, '13, Superintendent of Mina La Rica in Real del Monte, Mexico, expects to spend part of his summer in San Diego. His address will be 1331 Fern Street where he will be at home to any old Miners who happen to be in that part of the country.

## SENIORS ARE LEAVING.

Harry Birchard, Division Engineer's Office, Sapulpa, Okla.

Walter Burg, Division Engineer's Office, Big Four Railroad, Springfield, Ohio.

Charles Craid, Federal Mining and Smelting Co., Baxter Springs, Kans.

Wm. Godwin, Research Dept., Sinclair Oil Co., E. Chicago, Indiana.

Edward Griswold, Pure Oil Company, Tulsa, Okla.

Dryden Hodge, Graduate Student, Harvard, Cambridge, Mass.

Daniel Kennedy, Shands Engineering Co., Green Cove Springs, Fla.

Wm. Knight, Aluminum Ore Co., East St. Louis, Ill.

Mike Ledford, Braden Copper Company, Rancagua, Chile.

C. C. Smith, Braden Copper Co., Rancagua, Chile.

W. Irwin Short, Ross Engineering Co., Pittsburg, Pa.

Morris Tyrrell, Certainteed Products Co., Acme, Texas.

Ronald White, Ass't City Engineer, Hannibal, Mo.

Degan Boyd, Union Pacific Coal Co., Rock Springs, Wyo.

## R. A. JOHNSON MARRIED.

Mrs. W. H. Carroll of 6334 McPherson avenue, announced today the marriage of her daughter, Dorothy J., to Raymond A. Johnson, son of Mr. and Mrs. E. L. Johnson of 7104 Emile avenue, Maplewood. The young couple eloped to St. Charles April 4. Miss Carroll, who is 18 years old, gave her age as 21 in order to have the ceremony performed. Johnson, who gave his age as 21, is a student at the Rolla School of Mines, where he is studying to become a me-

chanical engineer. Mr. and Mrs. Johnson plan to make their home in St. Louis.

The above was taken from the St. Louis Star of May 14. Johnson is President of the Junior Class of M. S. M., and is a member of the Sigma Nu fraternity.

## Famous Sayings.

Fish: "I don't know."

Soph: "I am not prepared."

Junior: "I do not remember."

Senior: "I don't believe that I could add anything to what has been said."

—Ex.

Senior: "This book will do half your work for you."

Wise Frosh: "Give me two of them."

"You know that girl reminds me of a magazine."

"Which one? 'Popular?'"

"Naw, 'Everybody's'."

When the donkey saw the zebra  
He began to switch his tail  
"Well! I never!" was his comment  
"There's a mule that's been in jail!"

## Race Prejudice.

Anthony: "Where is Cleopatra tonight?"

Maid: "Oh, sir, she's at home with tonsillitis."

Anthony: "Darn those Greeks!"

—Ex.

Mr. Hout—Now everyone watch the board and I'll run thru it quickly.

## THE NEWS IN RHYME.

Pete, so we're told, drinks Strobach's pop,

And eats his chow at the Peacock Shop,

He goes to Heller's to spend his roll,  
And feeds his cat on Old Ben coal.

It doesn't pay to cut Pete's class,  
If you do you'll never in the wide world pass;

So watch your cuts—they'll never do—

For Pete flunked dangerous Dan McGrew.

Patronize our Advertisers.

JUST RECEIVED

SHIPMENT OF

ALLEN A HOSIERY

THE NEWEST SHADES

FOR

MEN AND WOMEN

ASHER BROS.

SEE

ALLISON

FOR YOUR

GRADUATION GIFTS

"GIFTS THAT LAST"

SEE

L. T. HUDSON MOTOR CO.

FOR

New and Used Cars

SEE

HARRY R. McCAW

FOR THE NEW ELECTRIC  
ROYAL SWEEPER

\$10.00 Allowance on Any Old

ELECTRIC SWEEPER

EAT WITH THE  
HONK-A-TONK MAN

GEO. CRAGLE

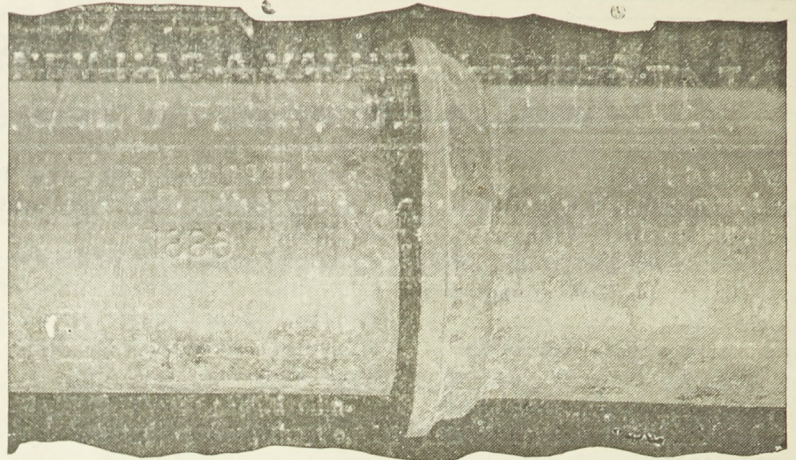


**C. E. INSPECTION TRIP.**

The Seniors in the Civil Engineering Department returned last Thursday from the tour of inspection which they had been making. During this trip they visited many notable features of Engineering in and about Chicago, as well as several points en route.

The trip started early Saturday morning, May 1, for Jefferson City where the members of the party held a conference with State Highway officials, after which they proceeded to Hannibal to spend the night. The next day Keokuk was visited, and the party reached Peoria for the night. On Monday the group went to Chicago, and on Tuesday visited the Municipal Pier and Art Institute in the morning, followed by a general tour of the Drives, parks, and Lake Front. Wednesday was spent in visiting the Calumet and Broadview sewage disposal plants. On Thursday, T. P. Kent conducted the Civils through the Illinois Steel Plant at Gary, Ind., and on Friday a visit was made to a sewage disposal plant on the North Side under construction. This is an Activated Sludge process plant, and is being built for an 800,000 population. Saturday was spent in employment conferences and a visit to the new Union Station and the top of the Tribune tower. From 4 to 6 p. m. the members of the party were the guests of Capt. Anderson on a Coast Guard Cutter, on which a twelve mile trip was made on the Lake to a Life Saving Station. Sunday morning various groups visited the Field Museum, the Ghetto Market, and the Zoo, while in the afternoon they saw the ball game between the Giants and Cubs. The Seniors inspected a new reinforced concrete, flat slab, double deck drive along South Water Street, on Monday, as well as making a thorough inspection of the new Stevens Hotel Building which is now under construction. On Tuesday afternoon the gang reached Springfield where they held an employment conference with R. R. Benedict, M. S. M., '08, Assistant Chief Highway Engineer, and visited Lincoln's tomb. After visiting the Research and Materials Testing Laboratories of the Illinois Highway Commission on Monday the group drove to St. Louis for the night. Thursday after visiting the Chain of Rocks Water Works Plant, the party returned to Rolla.

Quite a few old Miners were met on the trip including the following:



## Bell and Spigot Joint

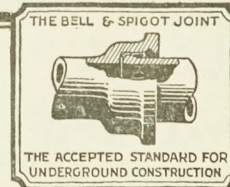
**T**HE Bell and Spigot Joint for Cast Iron Pipe adopted over one hundred years ago, is the preferred joint today.

It is tight, flexible, easily made and non-corrodible—there are no bolts to rust out—it makes changes of alignment or insertion of special fittings a simple matter—it can be taken apart and the pipe used over again, without any injury—it is not subject to damage in transit—in fact, it embodies practically all of the desirable qualities in an underground joint.

THE CAST IRON PIPE PUBLICITY BUREAU, Peoples Gas Bldg., Chicago

## CAST IRON PIPE

Our new booklet, "Planning a Waterworks System," which covers the problem of water for the small town, will be sent on request



Send for booklet, "Cast Iron Pipe for Industrial Service," showing interesting installations to meet special problems

at Jefferson City, J. L. Pasley, '25, F. A. Kaullen, '22, and F. C. Keith, ex-'25; at Hannibal, J. M. Wilson, '21, W. R. Getler, '22, E. B. O'Brian, ex-'25, and Mr. and Mrs. J. A. Westgard, '25; at Peoria, W. S. Wright; at Springfield, H. H. Hollingshead, '21, Starke, ex-'24, H. R. Bossert, '27, and C. C. Irving, '25. Several Miners were also met at the Alumni Banquet in Chicago on Wednesday night as listed in last week's Miner.

Numerous rumors are prevalent concerning occurrences at the Chicago Zoo, the Art Institute, and the

Northwestern U. Campus, but we have not yet succeeded in unearthing the facts relative to these happenings.

## FURNITURE

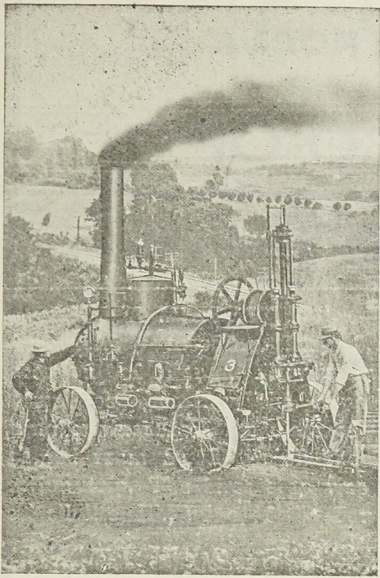
AND

## VARIETY GOODS

## C. D. VIA

The House of A 1000 Values





## H. R. Ameling Prospecting Co.

INCORPORATED

### DIAMOND DRILL CONTRACTORS

State Geological Survey  
Home of **ROLLA, MO.**  
Missouri School of Mines

20 Years of Continuous Service

NOT A DISSATISFIED CUSTOMER

#### A FEW OF OUR SATISFIED CUSTOMERS

AMERICAN ZINC CO.,  
Mascot, Tenn.  
HYDRAULIC PRESS BRICK CO.,  
St. Louis, Mo.  
ENGINEERING DEPARTMENT OF  
City of St. Louis  
GRASSELLI CHEMICAL CO.  
Cleveland, Ohio  
CENTRAL COAL & COKE CO.  
Kansas City, Mo.  
EAGLE-PICHER LEAD CO.  
Chicago, Ill.  
OWL CREEK COAL CO.  
Gebo, Wyoming.  
FEDERAL LEAD CO.  
New York  
U. S. STEEL CORPORATION

Continued from Page One.

president of the Senior class, and Buddy McBride, football captain.

Following the speaking officers of the Lead Belt Alumni Association were elected to serve for the ensuing year. G. L. Omstead, '01, was elected chairman, E. Taylor Campbell, '23, vice chairman and Roland Tragitt, '24, secretary-treasurer.

Leaving Bonne Terre Friday morning the miners went to Iron Mountain where the mine and mill of the Iron Mountain Mining Co., were inspected. There the metal miners and coal miners parted company. Prof. Forbes with the coal miners went to Du Quoin, Ill., on another coal mine trip and the metal miners started to Rolla, stopping en route at Graniteville to visit the granite quarries.

## Interest of Certificates of Deposit

Many who invest in our Certificates of Deposit put the "C. D." interest in their savings accounts where it will earn interest. This is a good way to make "C. D." interest count for your future.

## ROLLA STATE BANK

ROLLA, MISSOURI

#### MARIONETTES PERFORM AT MASS MEETING FRIDAY.

The M. S. M. Players became aware of a very serious rival contender for theatrical honors, when Joe Martin's Puppeteers staged a one-act presentation of "Bluebeard," at mass meeting Friday morning. A fair sized attendance was present to witness the ingenious performance of the mechanical actors, and apparently en-

joyed this novel form of entertainment. Martin, Livingston and Wheeler proved quite adept at handling their charges and succeeded in producing several novel and amusing, even though grotesque actions on the part of their charges. Eugene Northern and Misses Marguerite Charles and Emily McCaw read the parts of the actors in an excellent manner.

## ATHLETIC GOODS

BASEBALL

TENNIS

GOLF

AT

# The H & S Drug Store



RED ARROW MONEY HAS A VALUE IN ROLLA  
YOU GET IT FREE AT  
**SCOTT'S THE MINERS' CO-OP**  
**SUNSHINE MARKET**

FRESH MEATS

PHONE 71  
FREE DELIVERY

GROCERIES

*NATIONAL BANK OF ROLLA*

**School of Mines and Metallurgy**

OF THE

University of Missouri  
ROLLA, MO.

OFFERS FOUR-YEAR COLLEGIATE CURRICULA LEADING TO  
THE BACHELOR OF SCIENCE DEGREE IN

Metal Mine Engineering  
Coal Mine Engineering  
Mining Geology  
Petroleum Engineering  
Civil Engineering  
Metallurgy

General Science  
Mechanical Engineering  
Electrical Engineering  
Chemical Engineering  
Petroleum Refining  
Ceramic Engineering


Graduate Courses leading to the degree of Master of Science are also  
offered in these curricula.

GRADUATES with from three to five years, experience, depending up-  
on the curriculum followed, may receive the professional degree  
of Engineer of Mines, Civil Engineer, Metallurgical Engineer,  
Mechanical Engineer, Electrical Engineer, or Chemical Engineer,  
upon presentation of an acceptable thesis.

FOR INFORMATION, Address,

The Registrar,  
School of Mines and Metallurgy,  
Rolla, Mo.

EAT AT THE  
**PEACOCK FOOD SHOP**  
SHORT ORDERS  
PLATE LUNCHES  
SANDWICHES

  
**D. J. WALTER, M. D.**  
Practice Limited to Diseases of  
EYE, EAR, NOSE AND THROAT  
EYE GLASSES FITTED  
Office Hours:  
8 to 4, and by appointment,  
Phone 513 Rolla, Mo.

ALWAYS GO TO  
**HANRAHAN'S**  
FOR  
THE HIGHEST GRADE OF  
PURE FOODS  
GROCERIES  
MEATS  
FRUITS  
VEGETABLES