



13 Oct 1924

## The Missouri Miner, October 13, 1924

Follow this and additional works at: [https://scholarsmine.mst.edu/missouri\\_miner](https://scholarsmine.mst.edu/missouri_miner)

These newspapers reflect the attitudes, perspectives, and beliefs of different times. Neither the library nor the university endorses the views expressed in these collections, some of which contain images and language which may be offensive to some readers.

---

### Recommended Citation

"The Missouri Miner, October 13, 1924" (1924). *The Missouri Miner Newspaper*. 326.  
[https://scholarsmine.mst.edu/missouri\\_miner/326](https://scholarsmine.mst.edu/missouri_miner/326)

This Newspaper is brought to you for free and open access by Scholars' Mine. It has been accepted for inclusion in The Missouri Miner Newspaper by an authorized administrator of Scholars' Mine. This work is protected by U. S. Copyright Law. Unauthorized use including reproduction for redistribution requires the permission of the copyright holder. For more information, please contact [scholarsmine@mst.edu](mailto:scholarsmine@mst.edu).



# THE MISSOURI MINER.

Missouri School of Mines and Metallurgy, Rolla, Missouri.

Vol. 11, No. 4.

Monday, October 13, 1924.

Price, 8 Cents.

## ST. LOUIS U. 26, MINERS 14

### MINERS ATTEND PETROLEUM EXPOSITION.

The Second Annual International Petroleum Exposition and Congress, held at Tulsa, Okla., October 2 to 11, is said to have been the largest Petroleum Exposition ever held in the world. The exposition was attended by a number of Miners who are directly interested in the Petroleum Industry. The School of Mines was one of the three educational institutions having a booth at the Exposition. Many visitors were attracted by the elaborate display of fossils, geological maps, models of petroleum structures and the many other interesting features displayed at the Miner booth which was under the direct supervision of Dr. Dake and Professor Bridge.

Ten million dollars worth of exhibits were used to portray in vivid form the modern methods of extracting crude from the treasure house of Mother Earth. This was one of the most comprehensive exhibits of tools and supplies known to the oil world and one of the greatest industrial exhibits ever seen in any industry. Complete drilling rigs, diamond core drills, modern varieties of American and foreign rigs, all types of bits and other tools, refinery equipment, both in originals and small models, oil field specialties of every sort, samples of its products in various stages of refining, in short, every kind and type of machinery used in the production, refining, transportation, and marketing of petroleum and natural gas was shown at the exposition.

The Exposition could be called an education in every branch of the petroleum industry. The visitor had an opportunity to make comparisons of styles and methods of operation. He saw systems employed in other fields, was able to ask questions and place orders when he found equipment especially adapted to his needs. The employ had an opportunity of "brushing up" on his work and to broaden

Continued on Page Eleven.

### CLASS OFFICERS ELECTED SATURDAY.

#### Only 145 Votes Cast.

The class elections, which were postponed several times because an insufficient number of nominations had not been turned in to the Senior Council, were held Saturday afternoon.

Less than half of the students appeared to cast a vote or send a proxy. In four cases there was but one nomination, and in the case of Vice-President of the Junior Class, no one was nominated.

The officers elected are:

#### Senior Class.

President, J. N. Harris; Vice-President, S. M. Rathbone; Secretary, Leo Burnett; Treasurer, J. W. Fleming.

#### Junior Class.

President, H. W. Seifert; Vice-President, M. B. Mills; Secretary, R. R. Schooler; Treasurer, H. A. Murphy.

#### Sophomore Class.

President, F. B. Babb; Vice-President, R. D. Sullivan; Secretary, A. F. Mc Caff; Treasurer, R. E. Hilpert.

#### Freshman Class.

President, Vir Walker; Vice-President, R. Baumgardner; Secretary, Theron Aslin; Treasurer, M. M. Johnson.

The two Juniors elected to the Board of Trustees of the Rollamo Board are: S. E. Craig and D. R. Schooler.

### SCORE BOARD A SUCCESS.

The new football score board, which had its initial tryout at Parker Hall reporting the St. Louis University game, proved a decided success. The audience alone proved this by their numbers and enthusiasm. About four hundred Miner rooters watched the light indicating the position of the ball, move about the gridiron.

During the tense first half of the game the cheers as the Miners fought for the lead, interfered with receiving the returns by telegraph. The

Continued on Page Nine.

The Miners were beaten by St. Louis U. last Saturday, on the St. Louis U. field, by a score of 26-14. The game was by no means one-sided. At one time the score was 14-13 in favor of the Miners. The Miners were handicapped by not having Thomas, Fisher or Cammack in the game. Hasselman and Lee were the outstanding stars of the Miner aggregation, while Ramaciotti starred for St. Louis. The Miners fought to the end, but the loss of Tucker, Buck, Lee and Lemon, who were taken out of the game because of minor injuries, placed the team under a handicap, which they were unable to overcome.

#### First Quarter.

Ledford won the toss and chose to defend the east goal. St. Louis kicked off to the Miners, and the ball was returned to the 20-yard line. Lemon failed to gain. After Hasselman and Tucker made 4 yards thru the line Lee punted to the 40-yard line. Ramaciotti pierced the line for 20 yards. McKenzie added 3 more, and Ramaciotti carried the ball around end to the 6-yard line. St. Louis fumbled but recovered. Heinrich stopped an off-tackle play for no gain. Mahoney went around end for 5 yards, and Ramaciotti carried it over. O'Reilly kicked goal. St. Louis 7, Miners 0.

McBride kicked off to Mahoney, who returned to the 35-yard line. St. Louis was penalized 15 yards for roughing. McBride broke thru, and smeared a play for no gain. St. Louis fumbled but recovered on their 1-yard line. Ramaciotti punted to Lemon on St. Louis 35-yard line. Hasselman circled end for 25 yards. After two attempts at the line had failed, Lee went over for a touchdown. McBride kicked goal. Miners 7, St. Louis 7.

Ramaciotti kicked over the goal line, and the ball was put in play on the 20-yard line. Lemon made 1 yard off tackle, and Hasselman shot off tackle for 16 yards more. Lemon added 4 more, but the Miners were penalized for offsides. Tucker and Lee failed to gain, and the Miners were again penalized for offsides. Hasselman made 4 yards thru the line. Lee and Lemon failed to gain,



and another 5-yard penalty was inflicted on the Miners. Lee's punt was blocked, but recovered by the Miners on their 15-yard line. Lemon made 1 yard, and Hasselman 4 yards thru the line. Lee fumbled, and St. Louis recovered on the Miners' 25-yard line. Ramacciotti hit the line for 5 yards. O'Reilly failed to gain around end. Anderson broke up a forward pass, but another pass, Ramacciotti to McKenzie, brought the ball to the 5-yard line. Buck broke thru and stopped the next play for no gain. Ramacciotti circled end for a touchdown. McKenzie missed goal. St. Louis 13, Miners 7.

McBride kicked off to Mahoney, who returned to the 30-yard line. Ledford tackled McKenzie, who fumbled, and the Miners recovered on the 35-yard line. Hasselman added 2 yards, but Lee and Tucker failed to gain. Modaff goes in for Lemon. A pass, Lee to Anderson, failed to make first down by inches. Ramacciotti broke thru the line for 30 yards. St. Louis penalized 15 yards for roughing. Hasselman stopped a play for no gain. Ramacciotti went around end for 6 yards. Tucker was injured, and Berry replaced him. Johnson smeared a play for no gain. Ramacciotti fumbled, and the Miners recovered on St. Louis' 30-yard line. Modaff 2 yards. Miners penalized for offsidies. Berry failed to gain, and a pass, Lee to Ledford, was incomplete. Lee fumbled, but recovered. Berry failed to make first down. Ramacciotti made 1 yard. St. Louis fumbled and Anderson recovered. Hasselman made 8 yards, but the Miners were offside. Lee went around end for 6 yards. Modaff lost 3 yards. A pass, Lee to Ledford, failed to gain. McBride failed in attempted field goal from the 32-yard line. St. Louis ball on the 20-yard line. McBride threw McKenzie for a loss. St. Louis penalized 15 yards for roughing. St. Louis punted to midfield. Modaff broke thru the line for 25 yards. Hasselman 1 yard. Staunton, of St. Louis was put out of the game for slugging and St. Louis was penalized half the distance to the goal, which put the ball on the 15-yard line. Hasselman smashed off tackle for 11 yards, and Lee went over for a touchdown. McBride kicked goal. Miners 14, St. Louis 13.

#### Second Quarter.

O'Reilly kicked off to Hasselman, who returned to the 20-yard line. Berry made 2 yards. Lee failed to gain, and McBride punted to St. Louis' 41-yard line. Kapl went off tackle for 5 yards. Buck injured, but

remains in. Kapl fumbled, and Berry recovered on the Miners' 30-yard line. Lee injured, but remains in. Hasselman and Lee added 3 yards. Miners offsidies. McBride kicks to midfield. Kapl 3 yards. Buck injured. Allenbach went in for Buck. Mahoney 2 yards. Lee injured. McCoy for Lee. St. Louis completed a forward pass for 10 yards. Kapl hit the line for 6 yards, and McKenzie brought the ball to the Miners' 10-yard line. Kapl hit center for 4 yards. Arra went in for Johnson. A line smash failed, and a pass was incomplete. A pass over the goal line was good for a touchdown. O'Reilly missed goal. St. Louis 19, Miners 14.

McBride kicked off to St. Louis, the ball being returned to the 20-yard line. A line play netted 5 yards, and the half ended with the ball on the 25-yard line.

#### Third Quarter.

St. Louis kicked off to Lemon on the 17-yard line. Miners fumbled, and St. Louis recovered on the 10-yard line. Ramacciotti carried the ball to the 1-yard line. Ramacciotti went over, but St. Louis was offside. Ramacciotti 3 yards. A pass was incomplete over the goal line, and the ball went to the Miners on their 20-yard line.

McBride punted to the 45-yard line. O'Reilly went around end for 5 yards. Johnson stopped a line smash with no gain. Ramacciotti made first down. O'Reilly made 6 yards off tackle. Anderson smeared an end run. Two passes were incomplete, and it was the Miners' ball on the 25-yard line. Tucker and Lemon made 7 yards thru the line, but Modaff lost 4 yards on a fumble. St. Louis recovered a blocked punt on the 38-yard line. McKenzie went off tackle for 10 yards, and Ramacciotti added 5 more. Johnson stopped a line smash, and St. Louis was penalized 15 yards for holding. Ramacciotti gained 13 yards on a triple pass, and McKenzie brought the ball to the 16-yard line. Ramacciotti circled end for a touchdown. Miners 14, St. Louis 26.

McBride kicked off to O'Reilly on the 25-yard line. Two plays failed to gain, and St. Louis punted out on the Miners' 45-yard line. Lemon was injured, and Hasselman replaced him. Berry lost 6 yards. A pass was incomplete. Hasselman made 8 yards off tackle. Modaff wailed. McBride's punt was recovered on St. Louis' 25-yard line. An off tackle

Continued on Page Four.

## TAYLOR MURRAY'S

### BARBER SHOP

NEXT DOOR TO

Merchants & Farmers Bank

## EAT WHERE YOU

CAN SEE YOUR

### FOOD COOKED

## HONK - A - TONK

## ELECTRIC SHOE SHOP

THE STUDENT'S

SHOE HOSPITAL

OUR PRICES ARE RIGHT

## LONG MOTOR CO

Authorized

FORD, LINCOLN, FORDSON

Sales and Service

## LENOX & HAMMER

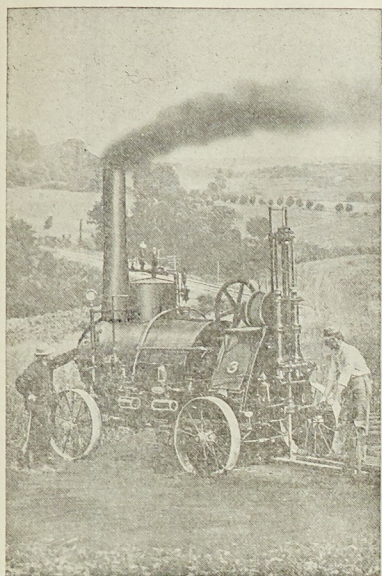
OUR SHOP IS

Sanitary and Modern

Which Enables us to furnish you with the best of

FRESH MEATS





## H. R. Ameling Prospecting Co.

INCORPORATED

### DIAMOND DRILL CONTRACTORS

Home of State Geological Survey  
Missouri School of Mines ROLLA, MO.

20 Years of Continuous Service

NOT A DISSATISFIED CUSTOMER

#### A FEW OF OUR SATISFIED CUSTOMERS

AMERICAN ZINC CO.,  
Mascot, Tenn.  
HYDRAULIC PRESS BRICK CO.  
St. Louis, Mo.  
ENGINEERING DEPARTMENT OF  
City of St. Louis.  
GRASSELLI CHEMICAL CO.  
CLEVELAND, OHIO  
CENTRAL COAL & COKE CO.  
Kansas City, Mo.  
EAGLE-PICHER LEAD CO.  
Chicago, Ill.  
OWL CREEK COAL CO.  
Gebo, Wyoming.  
FEDERAL LEAD CO.  
New York  
U. S. STEEL CORPORATION.

## SUNSHINE MARKET

PHONE 71

FRESH MEATS

FREE DELIVERY

GROCERIES

#### VOCATE.

James ("Joker") Clearman is again in school after having spent the summer with the Pure Oil Company, of Tulsa.

B. S. Castle, of the Springfield office, visited the coordinator last week checking over the training programs of vocational students.

All ex-service men who have not applied for adjusted compensation should call at the coordinator's office and fill out their application papers.

The following men attended the International Petroleum Exposition at Tulsa: Messrs. Ayres, Bodine, Coffman, Heaton, Lyon and McGrath.

Max Bothwell, '41, was in Rolla a few days last week.

E. Spencer Bodine is back in school after having spent the summer at Eldorado, Kansas.

Montie E. Lum, coordinator, was in Springfield last week on official business for the Veterans Bureau.

Frank Howes is still in the government hospital in Wisconsin. He was transferred to this hospital some time ago from Jefferson Barracks.

Mr. and Mrs. Harold Thomas and family, and Mr. and Mrs. William Bush and family spent Sunday in Salem, Missouri.

Mrs. Anthony Meglitsch left for St. Louis Thursday to remain until Mr. Meglitsch returns to school. "Tony" is at present working in



You are invited to meet  
the "Globe Man" who  
will be here

**OCT. 15TH & 16TH**

with the season's most exclusive  
fabrics shown in full length drapes  
and authentic fashions by the  
"Needle Master"—authorized by  
The GLOBE TAILORING &  
CINCINNATI

**HELLER'S**

Jefferson City.

Mr. and Mrs. M. F. Braun drove up from Fenton, Mo., Sunday to spend the day with friends.

Mrs. Geo. Berry and little Jimmie will leave Wednesday for Tulsa, Okla., where George is playing the oil game.

Subscribe for the MINER.

Sweet Young Thing—Would it be wrong for you to kiss me on the cheek?

Johnny Ennytime—Well, it might be a bit off color.

Mrs. Eva Underwood-Wright will leave for Peoria, Ill., Friday, to join her husband, W. S. ("Pop") Wright, '24.



## THE MISSOURI MINER.

The Official Publication of the  
M. S. M. Alumni Association.

A weekly paper published by the Students, in the interest of the Alumni, Students and Faculty of the Missouri School of Mines and Metallurgy, Rolla, Mo.

Entered as second class matter April 2, 1915, at the Post Office at Rolla, Missouri, under the Act of March 3, 1879.

## STAFF.

Donald R. Baker.....Editor  
Len Williams.....Managing Editor  
E. J. Gorman.....Athletic Editor  
E. Cushing.....Asst. Athletic Editor  
Harold S. Thomas.....Assistant Editor  
F. C. Schneeberger,  
Contributing Editor

## Business Management.

K. A. Ellison.....Business Manager  
G. C. Cunningham, Asst. Bus. Mgr.  
M. F. Zogg.....Adv. Mgr.  
F. K. Seydler.....Asst. Adv. Mgr.  
C. F. Luckfield.....Circulation Mgr.  
H. W. Seifert.....Asst. Circ. Manager  
L. S. Moore.....Asst. Circ. Manager

Subscription price: Domestic,  
\$1.50 per year; Foreign, \$2.00. Single  
Copy, 8 cents.

Issued Every Monday.

THETA TAU TO HOLD  
OPEN MEETING.

The Theta Tau Fraternity will hold an open meeting Wednesday of this week, at 7:30 p. m., in the Metallurgy Building. An interesting program dealing with the following subjects has been outlined: Highway Construction, Manufacture of Dynamite, Mining Methods at Morenci. These lectures will be given by men with practical experience along these lines and will be worth your time. There will be eats and smokes, so come out and let's get acquainted. Every one invited. Bring a friend.

Continued from Page Two.

play netted 4 yards, and Ramaciotti went around end for 15 yards.

## Fourth Quarter.

McKenzie hit the line for 3 yards, and Ramaciotti added 6 more. Another line play made first down. Ramaciotti gained 2 yards, but Anderson stopped an end run for a 1-yard loss. A pass was incomplete, and Modaff intercepted a pass on the Miners' 30-yard line. Tucker failed to gain,

but Hasselman went off tackle for 9 yards. Modaff failed, and Hasselman made 5 yards in two attempts. Hasselman gained 3 yards more. St. Louis intercepted a pass on their own 39-yard line. Arra for Young. Mahoney went around end for 11 yards. Treib went in for Anderson. After a line smash had failed, Mahoney again went around end for 9 yards. Tucker was injured, and McCoy replaced him. Ramaciotti made 9 yards on a triple pass, and Arra stopped McKenzie after a gain of 2 yards. Ledford stopped Ramaciotti. Johnson for Heinrich. St. Louis fumbled but recovered. A pass over the goal line was incomplete, and it was the Miners' ball on the 20-yard line. Modaff 1 yard thru center. McBride fumbled pass from center, but recovered. McBride kicked to 35-yard line. Ramaciotti made 20 yards in two attempts. St. Louis fumbled, and the Miners recovered on the 10-yard line. A pass was incomplete. Hasselman made 2 yards. McBride's punt was blocked, and recovered by St. Louis on the 10-yard line. A line smash and an end run failed to gain. Ramaciotti carried the ball to the 1-yard line, where the game ended.

Miners, 14. St. Louis 26.  
Ledford, Capt..... Amaral  
Heinrich ..... Sullivan  
McBride ..... Klausner  
Young ..... Hannegan  
Johnson ..... Higi  
Buck ..... Schwartz  
Anderson ..... Kohle  
Lemon ..... McKenzie (c)  
Hasselman ..... O'Reilly  
Tucker ..... Mahoney  
Lee ..... Ramaciotti  
Officials—Referee, Ramp (Cincinnati); umpire, Meeks (Michigan); Head linesman, Kamp (Washington);

PIRTLE  
WATCHMAKER & JEWELER

All Work Promptly Done

\$3.00


ENGLISH BROADCLOTH  
SHIRTS

AT

\$1.95

COLLAR ATTACHER  
AND NECKBAND

HARRY S. WITT



**A masterpiece**

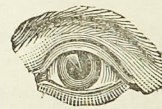
Not a hair out of place and not a single flake of dandruff. Big and strong also. Adonis had nothing on him.

You can gamble he doesn't say a word about "Vaseline" Hair Tonic. But he uses it almost religiously. Nothing like it for mastering unruly hair and keeping the scalp healthy. Rub it in regularly and your hair will stay with you and look right. At all drug stores and student barber shops.

Every "Vaseline" product is recommended everywhere because of its absolute purity and effectiveness.

**Vaseline**  
REG. U. S. PAT. OFF.  
**HAIR TONIC**  
For the Health and Appearance of the Hair

Chesebrough Mfg. Company (Cons'd)  
State Street New York



**D. J. WALTER, M. D.**

Practice Limited to Diseases  
of

Eye, Ear, Nose and Throat  
Eye Glasses Fitted

Office Hours:  
8 to 4, and by appointment  
Phone 513 Rolla, Mo.

**THE BEST AND CHEAPEST**

**PLACE IN TOWN TO EAT**

**THE STUDENT'S CAFE**

**FORT AND MARTIN**

**HARDWARE**

**AND**

**TIN SHOP**



### PROF. MUILENBURG RESUMES WORK AT M. S. M.

Prof. G. A. Muilenburg, who was on a leave of absence from the school last year, has returned to resume his work as a member of the faculty of the geology department. Last year Prof. Muilenburg attended Columbia University where he took post graduate work leading to a doctor's degree. His field work was done in the Tarryall District which is north east of Como, Colo. Prof. Muilenburg became interested in this district some time ago so it is natural that he chose that location for his field work.

His work would have been completed last June had he not taken sick with appendicitis. As it is, he plans to return to Columbia next June and take his final examination. He is now preparing his thesis, the title of which will be "Geology and Ore Deposits of Tarryall District, Como, Colorado."

While at Columbia University, Prof. Muilenburg was elected to the Sigma Xi Fraternity.

### KAPPA SIGMA PLEDGE DANCE.

A very successful pledge dance was held at the Kappa Sigma House on Friday, October 10. This was the first dance that has been given by the Kappa Sigs in their new home and was chaperoned by Mrs. F. E. Taylor.

Miss Lydia Jones of St. Louis and Miss Ola V. Powell of St. James were the out of town guests.

A strange, strange girl,  
Is Evelyn G.  
She will not roll 'em  
Below the knee.

### DO YOU GET YOUR MINER?

The Miner received many complaints last year from alumni who failed to receive their Miner. We are very sorry about this, and are doing our best to keep our mailing list up to date.

If we have the correct address of a subscriber, we can not understand why he does not get each issue, because there is very little chance of a stencil not going thru the addressing machine. Then it is up to the Post Office.

The surest way to get your name correctly on the mailing list is to send a card direct to the Circulation Manager. If copies are available we are more than glad to send those missed upon request.

### MINERS MEET

#### OKLAHOMA AGGIES.

Next Saturday the Miner football squad will engage the Oklahoma A. & M. team on their home battleground at Stillwater, Oklahoma. This combat will probably be one of the Miners' toughest assignments this season.

The Aggies have already proven their mettle by defeating a strong Kansas University team by a 6 to 0 score. This contest is the only re-

maining one before the annual Washington University game at St. Louis, and should service to indicate the true strength of the Miners' eleven.

Thursday night, October 9, was the occasion for a dance given by the Bonanza Club in honor of their pledges. The music was furnished by Smith's Rolla Syncopaters. The chaperones were Dr. and Mrs. J. W. Barley, Mr. and Mrs. E. D. Williams and Mrs. N. A. Kinney.

## MOST REMARKABLE SHOE VALUES IN AMERICA

WE HAVE BEEN ABLE TO SECURE A CONTRACT WITH THE NEWARK SHOE STORES CO., TO HANDLE THEIR FAMOUS LINE OF MEN'S SHOES AT \$3.50. MANY DIFFERENT STYLES OF SHOES AT THE ONE PRICE.

THE SOLES ON THESE SHOES ARE MADE OF THE FAMOUS "TUFFHIDE" WHICH WILL OUTWEAR TWO OR THREE PAIRS OF LEATHER SOLES. COME AND SEE THEM

DAN JETT





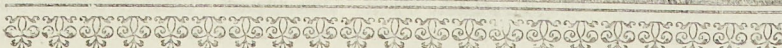
**Conklin**  
**ENDURA**  
*Unconditionally & Perpetually Guaranteed*

THIS famous pen shares with Time an infinity of existence. Time goes on forever. The Conklin Endura writes forever. In the hands of the student, the Conklin Endura becomes a perpetual souvenir of school days—a trustworthy tool—as indestructible as an education.

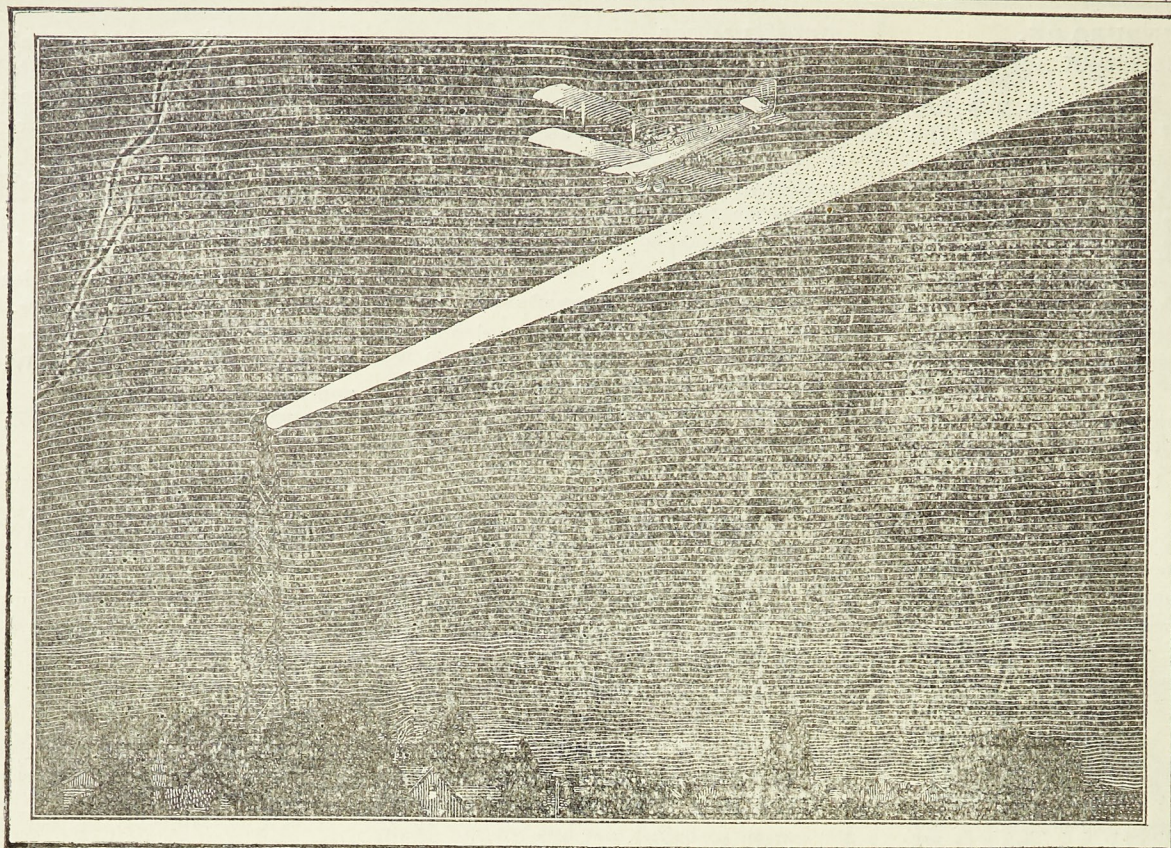
THE Conklin Endura is made in red and black. Two models—a generous-sized pen in two lengths for men, and a graceful, dainty model for ladies. A narrow band of gold and thin enameled rings on cap and barrel give it a unique, distinctive beauty.

\$7.00 for the men's models  
\$5.00 for the women's models

**Faulkner's**







## Beacons of the sky



This achievement has been made possible by engineers of the Illuminating Engineering Laboratories of the General Electric Company, working with officials of the Post Office Department. A startling achievement now will be a commonplace of life in the new America which you will inherit.

If you are interested to learn more about what electricity is doing, write for Reprint No. AR391 containing a complete set of these advertisements.

Between Cleveland and Rock Springs, Wyo., along the night route of the air mail service, tall beacons have been placed every twenty-five miles.

Revolving on great steel towers, General Electric searchlights, totaling 1,992,000,000 candle-power, blaze a path of light for the airplane pilot.

What the lighthouse is to the ocean navigator, these beacons are to the conquerors of the air.

**GENERAL ELECTRIC**  
GENERAL ELECTRIC COMPANY SCHENECTADY, NEW YORK

95-910DH



## OUR CO-EDS.

Our Co-eds, who have long been an attraction to the wandering eye of the gold-bricker, and as distractor to an industrious laboratory student, are eight in number this year, according to a hasty survey. Former co-eds were in the vast majority of cases local girls, but this year we find one, Miss Katheryn Emmos, from Syracuse, N. Y. Another, Miss Phariis Cleino, is from St. Louis. Both of these girls expect to graduate. This is their first year, and so far they are very much enthused over the school.

The other six co-eds are from Rolla. They are: Miss Mary Sally, Miss Margaret McKee, Miss Gerney Johnson, Miss Louise Johnson, Miss Augusta Koch and Miss Della Snodgrass.

All of the co-eds say that the students are more than willing to assist them in the class room and otherwise. This, of course, is the proper Miner spirit, but may spell defeat for some quixotic under-classman. As the renowned "Dusty" McDonald cried from the front seat of a covered wagon at a famous Freshman-Sophomore football game two years ago: "Resist them, Soph-o-mores!"

## IRA REMSEN SOCIETY HOLDS FIRST MEETING OF YEAR.

The Ira Remsen Society, the local chemical club, held its first meeting of the school year in the Chemical Building on Monday, October 6. The society, which has been known since 1914 as the "Diphenyl Dozen," last year requested the permission of Dr. Ira Remsen, widely known chemist and educator, for the use of his name as the name of the society. Dr. Remsen granted the request, and the change was made some time last year. At this meeting Dr. Remsen's framed photo and his letter of permission were shown. After the President, W. O. Keeling, spoke briefly on the name and purpose of the organization, Prof. Kershner gave a short talk on some of the high lights in Dr. Remsen's career. Dr. Turner followed with a lecture on the results of conducting for several months, in of research work, which he has been connection with the fire-clay industry. This very interesting lecture was followed by four reels of films from the U. S. Bureau of Mines, showing the uses and methods of manufacture of fire-brick. Another enjoyable feature, the eats, concluded the meeting.

For the information of new students, the object of the society is to discuss subjects of chemical and gen-

eral scientific interest. The next meeting will be held Oct. 20.

## ALUMNI NEWS.

Lawrence Thomy, '23, is junior process engineer in charge of the lithopone department of the St. Louis Lithopone Co., in Collinsville, Ill. He writes that he is married. His wife, formerly Miss Cullen, is a Washington U. graduate, so promises that both will attend the Washington U. game.

Barney Nudleman, '21, is a junior engineer in charge of the Gas Producers, Driers, Calcination Furnace, Fuel and Oil Equipment and Boilers of the St. Louis Lithopone Co., Collinsville, Ill.

G. Baker Shroeder, ex-'23, is now attending school at Georgetown University, Washington, D. C.

Elmer Chapin, '23, is now with the Shaster Zinc Co., Winthrop, Cal.

Edward Pesout, '23, was recently promoted to general foreman of the roaster at the Nevada Consolidated Copper Co., McGill, Nev.

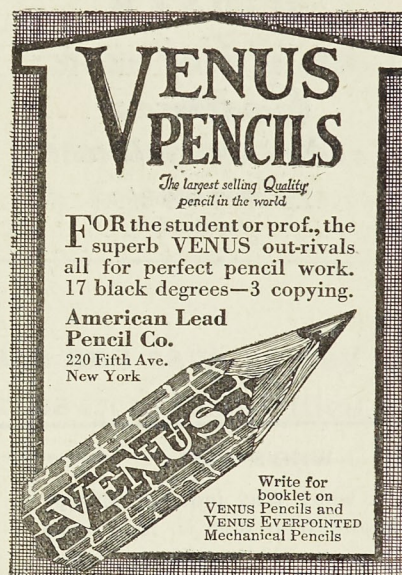
July 2, 1924, there was a great get-together in Joplin, Mo., of some of the old-time Rolla boys in the class 1899 and 1900. A swell feed was put on at the Conner Hotel. Those present were C. G. Seifert, E. Bishett, G. Underwood and Tayman E. Perkins.

E. R. Needles, '14, is at the New York office of Harrington, Howard & Ash, of which firm he is a junior member. His address is 750 Erie Ave., Elizabeth, N. J.

A. L. Kaplan, '15, is living at 2539 W. 66th St., Chicago, Ill. We hear he married a St. Louis girl on August 17, 1924.

T. F. Walsh, '17, is now a student at the College of William and Mary, taking courses leading to the degree of Master of Arts. Mrs. Walsh is also a student there. His present address is 225 Prince George St., Williamsburg, Va.

Subscribe for the MINER.



**VENUS PENCILS**  
The largest selling Quality pencil in the world

FOR the student or prof., the superb VENUS out-rivals all for perfect pencil work. 17 black degrees—3 copying.

American Lead Pencil Co.  
220 Fifth Ave.  
New York

Write for booklet on VENUS Pencils and VENUS EVERPOINTED Mechanical Pencils

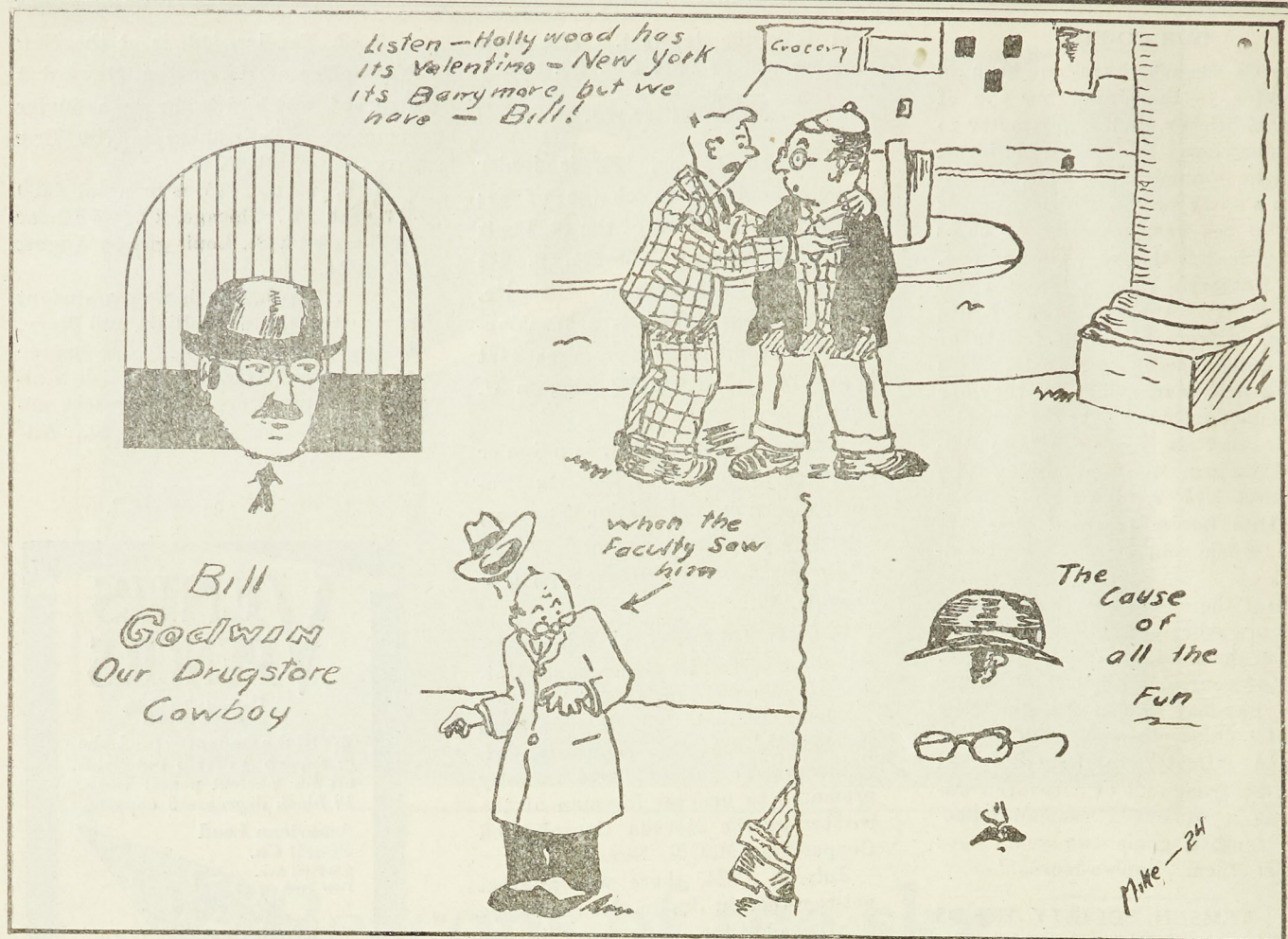
## WHAT INTERESTS YOU MOST?

Promotion?  
Ready money?  
A home of your own?  
A college education?  
A business of your own?  
An invested estate?

A savings account, well-built, will finally bring you to any, or all, of these goals.

**ROLLA STATE BANK**  
ROLLA, MISSOURI





#### WHO'S WHO.

Who's who? Why inquire? Everybody knows Who Who is. He's none other than our distinguished Hollywood sheik, Bill (Wm.) Godwin, formerly of Pinkneyville, Illinois, but now more or less of M. S. M. (How Pinckneyville must miss his august presence!)

Characteristic of our hero is his extreme modesty. His disinclination to publicity is also worthy of mention, as well as his tendency to shut up clam-like when approached for information on any subject—from soup to women. We may be mistaken, however, in regard to the above idiosyncracies of our sleepest of sleeks.

Of one thing we are certain: Bill (Wm.) Godwin is a gun with the women—not a son-of-a-gun—but old man Gun himself. He admits it. So do we. How could he be anything else? What piece of femininity could resist that imported black derby (why not brown Wm?) And those elegant hinges over those poor tired jaws? And those marvelous paradise feathers above the kisser?? We anxiously await the cold snowy months in fond expectation of the appearance of lovely white sheik golashes, common-

ly called spats.

As a chemist Bill (Wm.) Godwin is a second (72) Doc Turner. It is reported that the keys to the Chem. building are soon to be turned over to him. Ask (Wm.) himself.

Wm. Claims to be a natural born scholar. We claim he is a naturalized student. Otherwise, why the necessity of any textbook at all? Undoubtedly his pre and post-lecture conferences with his greatly inferior instructors are indicative of no ulterior motives. However, we doubt it.



SLIP INTO A BRADLEY

STERLING M. SMITH

HEAD LIGHT  
SNAG PROOF  
KHAKI PANTS  
\$3.00

**SCHUMANS**  
Rolla's Biggest and Best Store



Grid-Graph fulfilled the best expectations of all of the spectators, and will be a valuable asset in reporting the remaining games away from home.

Much credit is due to Eddie Griswold, Shucks Leonard, Jock Nolen, and the others assisting them in both operating and making the operation of the score board possible. Saturday morning several Miners became telegraph linemen, in order to run a line from the telegraph office to Parker Hall in time for the game.

The board is operated entirely by an electric lighting system. The play

being made is indicated by an electric light next to the plays which are listed below the gridiron. On either side of gridiron is a line-up of each team, and the player with the ball is shown by light next to his name. The downs are shown by four lights in a line, which are lighted in the order of the downs. Yards to gain are shown by a row of twenty lights, which are lighted according to the number of yards necessary to gain a first down by the team with the ball. The ball is shown by a light which moves across a nine by five foot gridiron.

With this score board the game in progress is easily followed, and it deserves a popularity in all future games away from home. The admission fees go toward the Athletic Association, and also to help pay for the board.

#### MINER BOARD NOTICE.

There will be an important meeting of the Miner Board Tuesday night at 7 o'clock. Members of the board and those trying out are requested to be present.

#### DO YOU KNOW

The advantage and simplicity of the  
Four Wheel Brake on

#### BUICK CARS?

If Not, Let Us Show You.

**HARRY R. McCAW**

#### MERCHANTS & FARMERS BANK

5 Per Cent Interest Paid on  
Time Deposits

Student Accounts Appreciated

LET

**HAROLD**

SHINE YOUR SHOES

AT

**Murray's Barber Shop**

He Appreciates Everybody's  
Business

#### A GOOD PLACE TO BUY

The very best Meats and Groceries. We sell for cash and save money  
Phone 77

**SEASE & SMITH** Across from Post Office

## THE SCHOOL OF MINES AND METALLURGY

A Division of the  
UNIVERSITY OF MISSOURI.

The second oldest School of Mines in America, offers seven four-year collegiate curricula leading to Bachelor's Degrees in

#### I. Mining Engineering

Options { Metal Mining  
Coal Mining  
Mining Geology  
Petroleum Engineering

#### II. Metallurgy

#### III. Civil Engineering.

#### IV. General Science

#### V. Mechanical Engineering.

#### VI. Electrical Engineering.

#### VII. Chemical Engineering.

Also offers one-year graduate curricula leading to Master's degrees in the branches of engineering named above.

The following degrees are conferred after three to five years of professional work:

Engineer of Mines, Civil Engineer, Metallurgical Engineer, Mechanical Engineer, Electrical Engineer, Chemical Engineer.

Has 800 graduates scattered all over the world holding positions as Engineers, Scientists and Teachers of Science and Engineering. At least 300 non-graduates have reached distinction in their chosen profession.

For information address

**THE REGISTRAR, Rolla, Mo.**



## ALUMNI NEWS.

C. A. Pierce, B. S. '16, is consulting mining engineer at Patagonia, Arizona.

R. R. Benedict, B. S. '15, is employed by the Illinois State Highway Commission as assistant highway engineer. He is stationed at Springfield.

Edward Pesout, B. S. '23, is general roaster foreman for the Nevada Consolidated Copper Co., at McGill, Nevada.

A. F. Golick is now with the Steel Supply Co., with offices at 125 North Jefferson St., Chicago, Ill.

Mr. and Mrs. Jos. C. Raible, Jr., are the proud parents of a son. "Doc" is in the real estate and insurance business at Hannibal, Mo.

Tirso Castillon is now superintendent of the Compania Arrendataria de Minas, S. A., at Sierra Majada, Coahuila, Mexico.

Lyle M. Barton is with the Utah Copper Co., Garfield, Utah.

Albert L. Ackers, '21, is doing geology work in the Pecos Valley, Texas, for the California Company. He states that last June he married a Sweetwater, Texas, girl. He can be reached at P. O. Drawer 846, Colorado, Texas.

Dr. Archibald A. Livingston, ex-'96, is practicing medicine at Cedar Hill, Jefferson County, Missouri. His son, John J. Livingston, is a freshman at the School of Mines this year.

James Laney, ex-'85, is in the carpenter and general contracting business at Wesco, Mo. He sent his oldest daughter to school at Pittsburg, Kansas, this fall. Jim said he attended the School of Mines before Prof. Dean came on the job.

W. S. Weimer, B. S. '24, is with the Scranton Coal Mining Co., at Marion, Illinois. "Hank" is acting in the capacity of assistant engineer. Present address is 306 East College St., Marion, Ill.

S. H. Stuart, ex-'23, is a member of the Illinois National Guard Team at the National Rifle Matches, Camp Perry, Okla. Sam can be remembered as the pride of the R. O. T. C. while in school.

Lieut. George A. Zeller, '23, former advertising manager of the Miner, and now with the 3rd Field Artillery, U. S. A., is on special duty as a range officer at the National Rifle Matches, Camp Perry, Okla. "Pinky" can be remembered by his moustache and quiet disposition.

John Gay Reilly, B. S. '17, was married to Miss Ursula Elizabeth Gil-senan Aug. 20, 1924, in Berkeley,

California. Mr. and Mrs. Reilly will be at home after Oct. 1st, Apartado No. 3, Pachuca Hidalgo, Mexico.

## New Addresses of Alumni.

T. R. Thomas, 3609 College Ave., Kansas City, Mo.

Richard H. Brumley, Arondale, Okla.

C. F. Winters, 129 North Olive St., Los Angeles, Calif.

N. B. Larsh, P. O. Box 228, Deming, New Mexico.

E. M. Johnson, Gen. Supt. Eagle-Picher Lead Co., Henryetta, Okla.

G. A. Duncan, Nelson, Nevada.

E. A. Slover, Box 412, McGill, Nevada.

T. W. Blake, 19 Margery Road, Welland, Ontario, Canada.

Jos. Novak, Jr., 421 So. Park Ave., Sedalia, Mo.

F. J. Kersting, 1616 West Main St., Jefferson City, Mo.

W. E. Remmers, 1101 Dover Place, St. Louis, Mo.

Chas. R. Barnard, Enos Coal Mining Co., Oakland City, Ind.

H. R. Powers, Eagle-Picher Lead Co., Henryetta, Okla.

A. Emory Wishon, Gen. Mgr., San Joaquin Light & Power Corp., Fresno, Calif.

M. N. DeBell, Room 10, Mo. Pacific Station, Sedalia, Mo.

## PROF. JENSEN ADDED TO PHYSICS DEPARTMENT.

Among our new professors this semester is Professor William J. Jensen from Illinois University. Prof. Jensen has been added to the staff of the Physics Department.

He received an A. B. degree with Cum Laude at Carleton College in 1920. In addition he has received a Masters of Arts degree at Illinois University in 1924, where he was also an instructor in the Physics Department. Professor Jensen is also an associate member of Sigma Xi and a member of Gamma Alpha Graduate Scientific Fraternity.

Patronize our Advertisers.

## FOR GUNS, AMMUNITION AND RADIO SUPPLIES.

SEE US! WE HAVE IT

*L. C. Smith & Son, Hdw. Co*

## Hotel Baltimore

SEE OUR LINE OF

**Cadet Sweaters & Flannel Shirts**  
**ASHER BROS.**



## Continued from Page One.

his view towards the whole industry.

The historical and technical exhibits created no little attention and was among the best ever assembled. Several photographs and a painting of the Drake Discovery well on Oil Creek, in Southwest Pennsylvania, were shown and the replica of the Drake well was true in every detail to the picture. A number of products from the distillation of shale were shown by the Colorado School of Mines. The Oklahoma University had a display of rocks, ores, sands and mineral specimens found in the state of Oklahoma. The Kansas State Geological Survey had a number of large graphic charts of Kansas showing where oil may or may not be found. The United States Geological Survey was well represented and distributed a large amount of literature setting forth the progress made by the Survey. The Corporation Commission had a booth where they explained gross production, the gasoline tax, and the conservation regulations of the department. The American Institute of Mining and Metallurgical Engineers had a collection of oil samples from every Oklahoma oil field. The U. S. Bureau of Mines dis-

played four hundred and twenty different samples of crude oil from practically every known oil field in the world.

Herr Wirth, who is the largest manufacturer of oil well equipment in Continental Europe, was present at the Exposition with an exhibit of miniature oil rigs representing those used in developing Germany's Petroleum resources. France, Scotland and Russia were also represented by interesting exhibits.

Mageantry played an important part in the Exposition program, and several gorgeous affairs were given in honor of the Queen of the Exposition and her fair attendants. Each day was dedicated to some major organization directly connected with the petroleum industry, and an elaborate social event served as a climax for each day's program.

A register at the Miner booth shows that the following Miners attended the Exposition: M. Albertson, '11; Edgar R. Keller, '22; W. C. Adams, '14; K. R. Teis, '22; P. F. Michall, '09; Jas. Clearman, '41; Joe McDonnell, '41; S. D. Farmer, '41; J. M. McMillan, '20; V. H. McNutt, '10; R. H. Brumley, '41; G. F. Berry, '41; E. A. Smith, '41; W. W. Kis-

kaddon; Frank Leach, '23; Thos. W. Lenox, '19; T. H. Hollow, '22; M. L. Terry, '20; R. J. Higgins, '26; J. N. Lyons, '17; H. R. Powers, '23; H. E. Zoller, '23; P. C. Arnold, '22; Johnson, '22; J. N. McGirl, '21; R. S. Burg, '16; R. L. Parker, '22; D. D. Dulin, '04; O. N. Maness, '18; V. H. Hughes, '07; M. W. Watkins, '23; F. B. Foley, U. S. B. M.; O. E. Browne; G. E. Ebmeier, '20; D. F. Don, '09; J. F. Hosterman, '22; W. A. Coffman, '41; Fred M. McGrath, '41; W. T. Hgaton, '41; M. W. Ayers, '41; Wm. Godwin, '25; E. S. Bodine, '41; E. J. Lyon, '41; C. B. Neil, '25; M. L. Atkinson, '25; E. H. Green, '11; D. H. Radcliff, '13; R. R. Hawkins, '20; A. B. Jewell, '23; V. J. Sittle, '24; I. W. Alcorn, '22; K. A. Ellison, '25; M. L. Heaford, '21; G. A. Kroenlen, '20; A. F. Tinex, '14; John Parott; F. W. Barley; T. A. Stevens; J. W. Howe; R. A. Parker; E. L. Arnold, '17; H. K. Crammer, '17; G. A. Phillips, Otis Mack, '18; J. L. Howendobler; M. W. Valerius; C. M. Huff; P. A. Smith; E. L. Emery; C. L. Shaw; P. L. Davis.

The M. S. M. Faculty was represented by Professors Bridge, McKee, Forbes and Dr. Dake.

Patronize our Advertisers.

IF YOU WANT A RELIABLE TYPEWRITER

DON'T BUY ANY OTHER BUT THE

**REMINGTON**

LET US SHOW YOU THE NEW PORTABLE MACHINE. WEIGHS ONLY 10 1-2 LBS.  
IN CASE. WE CAN GIVE YOU PLENTY OF TIME IN WHICH TO PAY FOR IT.

**HARVEY & SMITH**

The Student Store



## Give Photographs This Year For Christmas

Call and see our Special Offer for all Setting  
made during October

**BAUMGARDNER STUDIO**

## NATIONAL BANK OF ROLLA

### GEM CANDY SHOP

Fresh Candies, Fine Cigars, Hot and Cold Drinks and Light Lunches  
at all times

## THE MINERS' CO-OP AT SCOTT'S DRUG STORE

### E. E. SEASE

## Cleaning, Pressing and Repairing

PHONE 188

WE CALL AND DELIVER

Say it with Flowers

FRESH FLOWERS EACH WEEK.  
END, ALSO POTTED PLANTS

We will get any flowers for you  
and deliver them anywhere—F. T. D.

J. A. Spilman