



## Missouri S&T Magazine, April 1980

Miner Alumni Association

Follow this and additional works at: <https://scholarsmine.mst.edu/alumni-magazine>

---

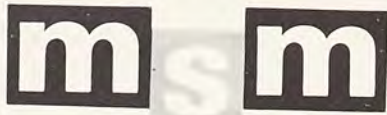
### Recommended Citation

Miner Alumni Association, "Missouri S&T Magazine, April 1980" (1980). *Missouri S&T Magazine*. 325.  
<https://scholarsmine.mst.edu/alumni-magazine/325>

This Magazine is brought to you for free and open access by Scholars' Mine. It has been accepted for inclusion in Missouri S&T Magazine by an authorized administrator of Scholars' Mine. This work is protected by U. S. Copyright Law. Unauthorized use including reproduction for redistribution requires the permission of the copyright holder. For more information, please contact [scholarsmine@mst.edu](mailto:scholarsmine@mst.edu).

APR 25 '80





Alumnus

MSM-UMR Alumni Association  
University of Missouri-Rolla  
Rolla, Missouri

Volume 54  
Number 2  
April 1980

On The Cover...



St. Pat's buttons pictured on the cover are from the Sigma Tau Gamma fraternity collection. Sig Taus won the prize for the oldest button (1935). They also had the winning float and won the "spirit" participation award for 1980.

MSM ALUMNUS  
(USPS-323-500)

Issued bi-monthly in the interest of the graduates and former students of the Missouri School of Mines and Metallurgy and the University of Missouri-Rolla. Entered as second class matter October 27, 1926, at Post Office at Rolla, Missouri 65401, under the Act of March 3, 1897.

MSM-UMR Alumni Association  
Telephone (314) 341-4171; (314) 341-4172

OFFICERS			Term Expires
President	Joseph W. Mooney, '39	7383 Westmoreland University City, MO 63130	1980
President Elect	Robert D. Bay, '49	222 Magna Carta Lane St. Louis, MO 63141	1980
Vice President	Frank C. Appleyard, '37	808 Solar Glenview, IL 60025	1980
Vice President	Arthur G. Baebler, '55	20 Fox Meadows Sunset Hills, MO 63127	1980
Vice President	Alfred J. Buescher, '64	624 Golfview Dr Ballwin, MO 63011	1980
Vice President	James B. McGrath, '49	Fru Con 1706 Olive St., St. Louis, MO 63103	1980
Secretary	Robert V. Wolf, '51	Dept. of Metallurgical & Nuclear Engr. UMR, Rolla, MO 65401	1980
Treasurer	Vernon T. Loesing, '42	Dept. of Civil Engr UMR, Rolla, MO 65401	1980

DIRECTORS AT LARGE			Term Expires
Alan H. LaPlante, '63	Tomlinson Petroleum, Inc., Suite 415, 1200 Milam, Houston, TX 77002		1980
Belding H. McCurdy, '38	7400 Sun Island Dr., South, Suite 711, South Pasadena, FL 33707		1981
E. L. "Roy" Perry, '40	The Port of Los Angeles, P.O. Box 151, San Pedro, CA 90733		1980
Walter C. Mulyca, '65	203 Hillcrest, Marshall, TX 75670		1981
Armin J. Tucker, '40	6464 Overlook Drive, Alexandria, VA 22312		1982
James D. Gostin, '44	J.G. Sales Co., P.O. Box 3024, Arcadia, CA 91006		1982

AREA DIRECTORS			Term Expires
Area Zip			
Code Numbers			
00 14 Raymond T. Ruenheck, '50	7 Montevue, Chelmsford, MA 01824		1980
15 21 J. D. Patterson, '61	1660 Ashlawn Dr., Pittsburgh, PA 15241		1980
22 34 Gerald L. Stevenson, '59	145 Greenbrier Dr., Chagrin Falls, OH 44022		1982
35 45 William D. Busch, '42	20001 Idlewood Trail, Cleveland, OH 44136		1980
46 59 George Baumgartner, '56	2120 Syracuse, Dearborn, MI 48127		1981
60 61 Allen G. Behring, '66	121 E. Witchwood Lane, Lake Bluff, IL 60044		1982
62 62 Ernst Weinle, '44	1502 West 50, O'Fallon, IL 62629		1981
63 65 Matteo A. Coco, '66	7115 Aliceton Ave., St. Louis, MO 63123		1981
63 65 Martha Gerig, '69	801 Fairground Road, Rolla, MO 65401		1981
63 65 Leonard C. Kirberg, '66	331 Carmel Wood Dr., Ellisville, MO 63011		1980
63 65 Robert W. Klorer, '44	7500 Natural Bridge Rd., St. Louis, MO 63123		1980
63 65 Harold A. Krueger, '42	Ozark Lead Co., Rural Branch, Sweetwater, MO 63680		1982
63 65 J. Robert Patterson, '54	Show Me, Inc., P.O. Box 573, Sikeston, MO 63801		1981
63 65 George R. Schilling, '63	7598 John Ave., Oakville, MO 63129		1980
63 65 Paul R. Munger, '58	Director, Institute of River Studies, UMR, Rolla, MO 65401		1981
63 65 C. M. Wattenbarger, '41	205 W. First St. Terrace, Lamar, MO 64759		1981
63 65 J. L. "Jack" Painter, '50	2123 Sunset Drive, Poplar Bluff, MO 63901		1982
66 74 David D. Kick, '57	4915 S. Lakewood Dr., Tulsa, OK 74135		1982
75 79 William E. Patterson, '53	10031 Briar Rose, Houston, TX 77001		1982
80 89 &			
96 99 Victor J. Hoffmann, '60	31057 E. Lake Morton Dr., S.E. Kent, WA 98031		1980
90 95			

COMMITTEE CHAIRMEN DIRECTORS		
H. W. Flood, '43	183 Main St., Acton, MA 01720	
Joel F. Loveridge, '39	739 Country Manor Lane, Creve Coeur, MO 63141	
Hans E. Schmoltdt, '44	Schmoltdt Engineering Services Co. Inc., 526 S. Seminole, Bartlesville, OK 74003	
Lawrence A. Spanier, '50	5 Pettit Drive, Dix Hills, NY 11746	

EXECUTIVE COMMITTEE			Term Expires
Richard H. Bauer, '52	Missouri Electrochem Inc., 10958 Lin Valle Dr. St. Louis, MO 63123		1984
Robert M. Brackbill, '42	Texas Pacific Oil Co. 1700 One Main Place, Dallas, TX 75250		1982
Peter F. Mattei, '37	9954 Holliston Court St. Louis, MO 63124		1980

EX OFFICIO DIRECTORS		
Paul T. Dowling, '40	10144 Winding Ridge Rd., St. Louis, MO 63124	
R. O. Kasten, '43	901 West 114th Terrace, Kansas City, MO 64114	
James J. Murphy, '35	Murphy Company, 1340 North Price Rd., St. Louis, MO 63132	
Melvin E. Nickel, '38	10601 South Hamilton Ave., Chicago, IL 60643	
F. C. Schneeberger, '25	One Briar Oak, St. Louis, MO 63132	
James W. Stephens, '47	Missouri Public Service Co., 10700 E. Highway 50 Kansas City, MO 64138	

STAFF		
Frank H. Mackaman	Executive Vice President, MSM-UMR Alumni Association and Director, Office of Alumni/Development, University of Missouri-Rolla	
John Theilmann	Assistant Director, Alumni/Development University of Missouri-Rolla	
Barbara Petrovic	Staff Assistant, MSM-UMR Alumni Association and Senior Secretary, Alumni/Development, University of Missouri-Rolla	
Kris Curtin	Records Coordinator, MSM-UMR Alumni Association & Computer Terminal Operator, Alumni/Development, University of Missouri-Rolla	
Sally White	Editor, MSM ALUMNUS	

MSM-UMR Alumni Association, Harris Hall, UMR, Rolla, MO 65401

St.

The We  
miserable-  
was cold a  
to shine on  
perfect day  
temperatur

Preparat  
were thorc  
toted a for  
carve and  
in order to  
pus. Conte  
shillelghs  
shirt, plain  
displayed c  
woman's h  
displayed c  
about St. F.

Festivitie  
traditional  
Friday n  
Bullman M  
Queen of L  
dividuals w  
Twenty-six  
ed and awa  
their inform  
afternoon.

Highligh  
Saturday m  
its annual g  
preceded t  
manure spr  
along the r

"Irish Tr  
theme. "Lep  
Rainbow."  
down a giga  
Tau Gamm

a special hi  
lawmower  
itation of th  
numerous n  
meini Kazo  
viewed by a  
great crowd

Festivities  
the "New R  
"best ever"

# St. Pat's—1980

The Wednesday before St. Pat's official arrival was miserable—snow, sleet, ice and cold winds. Thursday was cold and gloomy. But, the sun came out on Friday to shine on the traditional games. Saturday was a perfect day for a parade—with a bright, blue sky and temperatures in the 60's and 70's.

Preparations for the 72nd annual St. Pat Celebration were thorough. From March 3, the male freshmen toted a forest of shillelaghs (UMR's freshmen women carve and carry walking sticks) with them at all times in order to be prepared to drive all snakes from campus. Contests were held to award prizes for the shillelaghs and walking sticks, the oldest St. Pat's sweatshirt, plain and fancy beards (men), most garters displayed on one leg (women), most green bows in a woman's hair, oldest St. Pat's button, most buttons displayed on a sweatshirt, the best song, poem or jingle about St. Pat's, and the greenest man and woman.

Festivities included a barbecue on Thursday and the traditional games on Friday afternoon.

Friday night, at formal ceremonies held in the Gale Bullman Multi-Purpose Building, St. Pat crowned his Queen of Love and Beauty and seven distinguished individuals were dubbed Honorary Knights of St. Patrick. Twenty-six student knights were also formally recognized and awarded medalions—an honor bestowed prior to their informal introduction to "Alice" on Saturday afternoon.

Highlight of the entire weekend was a parade on Saturday morning. Alumni board reps gave Pine Street its annual green paint job. St. Pat and his court preceeded the main event, riding on the traditional manure spreader and gathering in all the pretty girls along the route for St. Pat to kiss.

"Irish Traditions and Folklore" was this year's parade theme. "Leprechaun's Pot of Gold at the End of the Rainbow," with several mechanical "wee people" sliding down a gigantic rainbow into a pot of gold was Sigma Tau Gamma's award-winning float. TKE pledges were a special hit with their Schminer Corps of motorized lawnmowers performing precision drills in obvious imitation of the popular Shrine units. Twelve bands and numerous non-float entries (including Triangle's Khomeini Kazoo Corps) added to the spectacle which was viewed by an estimated 20 to 25 thousand people—a great crowd!

Festivities ended Saturday night with a concert by the "New Riders of the Purple Sage." All in all, the "best ever" St. Pat's Celebration in Rolla.



# HONORARY KNIGHTS OF ST. PATRICK



**JOHN M. (JACK) KEANE**

Director, Missouri Department of Labor and Industrial Relations and National President of the Ancient Order of Hibernians.



**ROBERT McKUNE**

President and General Manager of Rolla Radio Stations KTTR and KZNN.



**BOB L. MORNIN, '48**

President, Coors Container Co., and executive Vice President, Adolph Coors Co.



**B. KEN ROBERTSON**

UMR Dean of Students and Professor of Chemistry.



**RALPH UTHLAUT JR.**

State Senator, Missouri 23rd District.



**SALLY WHITE**

Information Specialist, UMR Public Information Office and Alumni/Development Office.

Ma  
Ele

Brian  
exactly  
mechan  
sity of M  
to imper  
annual  
in Rolla  
Brian  
Gerald  
Manche  
Luther  
Louis, a  
freshma  
He ple  
and has  
pledge c  
assistant

St. Pa  
Brian ha  
for other



THE R  
Director  
Associate  
Church. R

## Manchester Student Elected St. Pat

Brian Wagner is a saint! Well...not exactly a saint. But the senior in mechanical engineering at the University of Missouri-Rolla, was chosen to impersonate St. Patrick at the 72nd annual UMR St. Pat Celebration held in Rolla March 13-16.

Brian is the son of Mr. and Mrs. Gerald Wagner, 509 Spring Meadow, Manchester. He was graduated from Lutheran High School South in St. Louis, and came to UMR as a freshman in the fall of 1976.

He pledged Beta Sigma Psi fraternity and has served that organization as pledge class secretary, files chairman, assistant steward and steward.

St. Pat's takes a lot of time, but Brian has found room in his schedule for other activities too. He has been a

member of the student chapters of the American Society of Mechanical Engineers, and the Society of Automotive Engineers. He is also a member of the Theta Tau Omega, a service fraternity.

Like many UMR students, Brian is interested in cars and other forms of transportation. He has a 1968 MG that he keeps in condition himself and is also into motorcycles and radio-controlled model airplanes. But these are just a hobby, Brian says. His ultimate goal is a job with Southwestern Bell when he receives his degree in 1981.

For the past three summers, he has worked with Western Electric in Ballwin. This work helps to cover expenses on campus and is good preparation for his chosen career.



**BRIAN WAGNER**

During the week or ten days preceding the St. Pat's celebration, career plans took a back seat.

Nothing much about the St. Pat celebration changes from year to year," Brian says. "But each year we try to provide the best organization of activities. We want everyone, students and townspeople alike, to have a good time."



**THE REV. JAMES L. WEIBERG**  
Director, Newman Center and Associate Pastor, St. Patrick's Catholic Church, Rolla.

## St. Pat's Queen

St. Pat himself couldn't have engineered a more fitting choice for his 1980 Queen of Love and Beauty.

Reigning over the two days of festivities in honor of the patron saint of engineers was Ellen Tierney of Sullivan, an engineer. A freshman in engineering management at UMR, Miss Tierney was elected by members of the St. Pat's Board.

"It surprised me," she said upon learning of her selection. "I'm very happy to have been chosen. It's (the St. Pat's Board) a good organization."

At UMR, she is a member of Kappa Delta sorority, the Society of Women Engineers and the student chapter of EMA-AIIE (Engineering Management Association-American Institute of Industrial Engineers.) She represented the



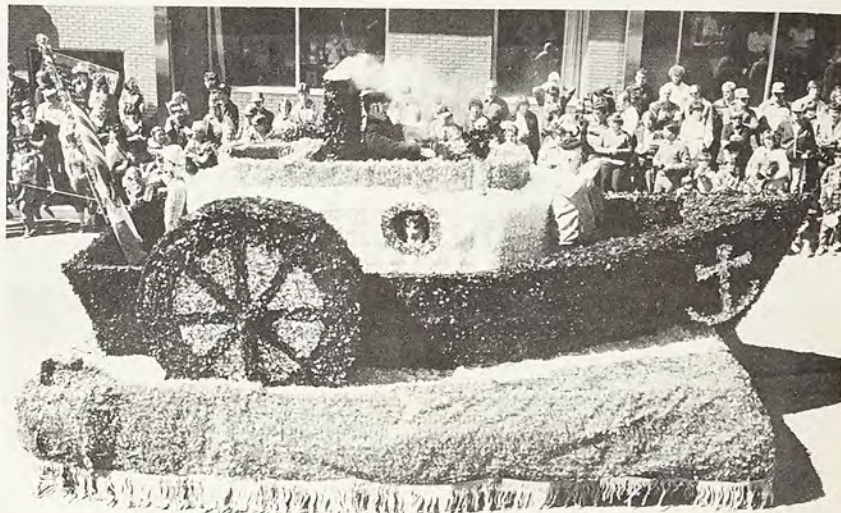
**ELLEN TIERNEY**

engineering management department during Engineers Week (Feb. 17-23), and she also is active in intramurals and Residence Halls Association (RHA) activities. In fact, she was RHA's queen candidate.

# ST. PAT'S HIGHLIGHTS



Shillelachs and walking sticks.



TKE's "Irish Immigration"



1980 St. Pat's Parade

1980 Parade Marshal—Rex Williams, '31



Honorary Knight Bob Mornin, '48, and Mrs. Mornin





Alumni Board Reps paint the town green.



PiKA's Oxcart with leprechaun and load of potatoes



Street painter's helper



St. Pat and Court on manure spreader

Motorized Shrine Corps



Motorized Schminer Corps





# THE START OF MY CAREER IN MINING ENGINEERING

By Eva Hirdler Greene, 1911

After graduation, I arrived home in St. Louis and, within a few days, I had a job as a stenographer. I worked during all of June and the first week in July. During that time, I read many technical journals to see if there were any jobs available for a mining engineer.

I received a call from a St. Louis firm asking me to do reconnaissance work in Iron County, Mo.—just a small job of about three weeks duration. This firm owned 20 acres of land right next to Pilot Knob properties. They wanted to know if there had ever been any testing for iron ore on their land.

My headquarters were at the Arcadia Room and Boarding House in Arcadia. There were no hotels there. The family running the boarding house served all of the miners, as well as myself, with breakfast and dinner and had lunches ready. I never saw any of the miners until dinner time. These white miners ate breakfast early in the morning as they all started to work at 7 a.m. in mines in Iron County. I ate breakfast at 8 a.m., took my lunch and a small bottle of water wrapped in newspapers to keep it as cool as possible. Then back to dinner at 5 p.m. The miners came to dinner about 6 p.m. They were the dirtiest bunch of white

6/MSM Alumnus

miners I had ever dreamed of. They were "hairy ears" for sure.

After I had washed my face and hands and combed my hair, the mother of the family that ran the boarding house seated me at the head of the table and told me that those miners could not shove me off that chair. The family only permitted educated white people to have a room there. At dinner I sat still and listened to various things the miners talked about. Frequently, they would discuss those 'silly Crawford people' who had stopped mining hematite, but just moved around the "backside" of the mountain to strip limonite instead. So, I made up my mind to go to the "backside" of the mountain when my work took me close to Pilot Knob.

As I came around the mountain picking up small specimens of hematite, examining them and carefully putting them into a cloth bag slung over my shoulder, a gentleman saw me and realized I was a woman because I wore a skirt. He walked over to me and asked what kind of rocks I was picking. I pulled a couple of specimens out of my bag and said, "These are small specimens of hematite. I hope I can find some larger specimens." Then he asked my name, and where did I learn about hematite. I told him at the



EVA HIRDLER GREENE

Missouri School of Mines and Metallurgy. I had my B.S. degree majoring in mining engineering, 1911. This gentleman said he had graduated from MSM about four years before I did.

In the conversation that followed, he told me he had been begging Mr. Crawford to find a substitute to take over his work there as supervisor so he could go back to MSM to earn a master's degree. The subject of his thesis was to be on tunnelling. On his way back, he would see Mr. Crawford and help him raise the money to purchase all the necessary machinery to use in tunnelling for hematite again.

Then he said, "Miss Hirdler, would you be willing to substitute for me for one year?"

I answered by saying, "Yes, under certain conditions. Would your colored miners take orders from a white woman? Because I would have to be the boss."

So the young man said, "O.K., I will go talk to my miners, to give them a chance of talking it over." In a short while all 65 miners came to us and said, "Yes, boss, we will gladly work for Miss Hirdler and take orders from her. Also, you know that in winter it gets dark by 5 p.m., and we promise now that one of us will take Miss

Hirdler back to the boarding house, and know that she is safe."

The young man said he would call Mr. Crawford and tell him about the mining engineer who had just graduated from the School of Mines and Metallurgy in Rolla and he would be sure not to mention "she". He went to his locker box and took out an instrument that his boss had given him, pulled out an antenna, pressed a button, and his boss answered, as he had a similar instrument at his desk.

I didn't learn much from the answer he gave, but I heard the young man say, "yes, at the same salary I get." Then more questions, and the young man made a slip of the tongue and said "she". We all heard Mr. Crawford yell loudly "to hell with a woman...you know I hate females." Thus, I had a nice mining job for one year, which I lost in five minutes.

While this young man and I were talking, I told him that Guy Crane, a geologist at the Missouri Bureau of Geology and Mines was writing a book on the Iron Ores of Missouri, and I was picking up those small specimens of hematite to send to him. He helped me collect many specimens of hematite and some good specimens of limonite also. We wrapped them in newspaper and returned to the boarding house, where we boxed them and mailed them to the Bureau of Geology and Mines, in Rolla. I included a return address with my name and the address of the boarding house.

Three evenings later, I received a telephone call from H. A. Buehler, director of the Missouri Bureau of Geology and Mines. He thanked me for the magnificent specimens of hematite and said that Guy Crane forgot to go to Iron County. Neither of them had known that hematite had ever been mined in the State of Missouri. "Thanks to you," he said, "these specimens will take a prominent place in Guy's book."

Then he said, "Miss Hirdler, there is something else I want to talk about. I

lost my chief clerk this morning—he received a telegram offering him a job in a copper mine in one of the western states and left immediately. Will you take this job? It only pays \$60 a month. We are a non-profit organization and our pay is not much. All of us, from the janitor to myself, get low pay."

I hesitated, as the salary was a great deal less than I was making when I quit my job in St. Louis as a private secretary to a gentleman who managed three departments. But my "guardian angel" nudged me, and I realized that this job would open up into something bigger. So I said yes, I would be glad to take the job as his chief clerk. I went home to St. Louis, then returned to Rolla and started work on August 1st.

During the two and a half years that I worked at the Survey, much progress was made in my life, step by step. Three weeks after I started as chief clerk, I became statistician for the

State of Missouri. I was to record the daily production of ores, clays, limestone, etc., for every county in Missouri.

At the same time that my "Chief" received the letter designating his chief clerk as statistician to record the production figures, he was also told that they were sending a large roll of heavy white paper sheets on which to record the statistics (starting Sept. 1, 1911). When the paper arrived, it was three feet wide and eight feet long. We did not have a table large enough. We secured a carpenter to make a table to hold the sheets, and he made it smooth enough for me to write on the paper directly, with India ink.

Shortly after starting my work, my Chief came to tell me he was going to meet David White, the principal geologist of the United States Geological Survey in Washington, D.C. They returned to the office, and my Chief asked me to come to his office ten minutes later...without my note book.

## About The Author...

*Eva Hirdler Greene was the first woman to graduate from the University of Missouri School of Mines and Metallurgy (MSM), in May, 1911, with qualifications as a mining engineer.*

*Mrs. Greene's first career included mining reconnaissance, technical editing and success as an independent oil producer. She was involved in the first drilling project using diamond drills in the early 1920's.*

*After her retirement from the oil business, Mrs. Greene moved to California and began her second career as a human engineering specialist. As a pioneer in the field, she has applied her engineering techniques to problems in human development — career guidance, industrial management, and family counseling. She has been instrumental in developing testing methods to determine engineering aptitude.*

*At the age of 96, Mrs. Greene continues her student advisory work, accepts some speaking engagements and is writing her autobiography.*

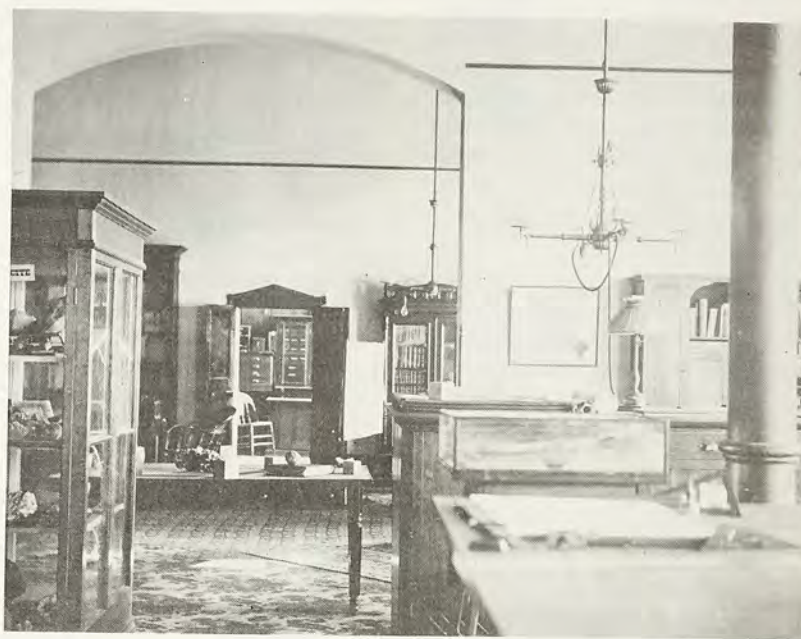
*"As an active non-conformist, I have experienced an exciting life — with the usual ups and downs that most people encounter," she says. "You know, I never see the hole in the doughnut — only the 'goodies' around that hole."*

*The following article by Mrs. Greene details the beginning of her long career — the problems and successes encountered by a woman entering the field of mining engineering from June 1911 to December 1913.*

The Chief introduced David White to me, and said, "We are going on a trip to Joplin district because David White wants to see how they mine the zinc there. We'll be gone about 10 days, but I only want you to forward our mail to Joplin Post Office for seven days. In those last three days we will go to some other mines, as they do not all use the same methods.

Each day that Ed the janitor brought the mail, he laid it on my desk. I selected the mail to forward to the Chief and Mr. White, and told him to lay the ads and other communications from persons in Phelps County on the Chief's desk. In the meantime, I set up a scale of dates according to the calendar throughout the seven days. I numbered these letters and made notes on the scale so that he would know when they came, from whom, etc. The Chief and Mr. White picked their forwarded mail up and noticed that some of the numbered letters were not in sequence. The postmaster checked again and found the missing mail. The letters might not have been missed if they hadn't been numbered in sequence. My Chief and Mr. White, on their return, thanked me for having established a format for forwarding mail that would keep them in some order as well as identified. He said that no chief clerk of his had ever shown so much good common sense. David White also congratulated me and said he was going to institute the numbering system for all the geologists working with the Survey, as they were always forwarding mail to out-of-the-way places, and often mail to the field would be lost, or returned "uncalled for". etc.

Four months later, David White again came to the office, and wanted my Chief to take a trip with him to the northwest counties in Missouri to see how much work had been accomplished there. While I was in the office, the Chief said he was terribly busy editing manuscripts, and although he enjoyed the trips, he didn't see how he could get everything accomplished.



Missouri Bureau of Geology and Mines offices in the Rolla Building on campus. Photo courtesy of Missouri Department of Natural Resources Geological Survey.

So, the day after they left, I went into the Chief's office, took the top manuscript off his desk and started to edit it.

I became the technical editor for all those manuscripts and many more. I found something that I loved to do. It took patience, and I possessed that.

During the time I was at the Survey, I had an opportunity for my second job of reconnaissance work—in the Province of Ontario, Canada, with headquarters in St. Edwards Island. I took a six-weeks leave of absence during the last half of June and all of July in 1912, to act as an assistant to Dr. J. A. Hielsher.

Dr. Hielsher and his wife, Helen, were physicians. In 1910, they took time off from their medical work to attend MSM in Rolla for several years taking classes in geology, the first love of Dr. J. A.'s life. I met them while

they were at school, before I graduated.

For many years they had spent their summers on St. Edwards Island, across from Killarney Province in Ontario. They had a one-bedroom home, and guests slept in tents. Dr. J. A. spent many hours roaming the area picking up specimens of rocks.

One fall, when he came back to Rolla, Dr. Hielsher brought a specimen of the rocks from Ontario to the chief chemist in the Chemistry Building, and asked him if he had any way to test the specimen to see what it really was. The chemist said no, but suggested he show it to Chief Buehler at the Survey.

Dr. Hielsher brought the specimen to the Survey and they discovered that it was magnetic iron ore. The doctor wanted to continue study of that area and determined he would need a

magnetic dip needle. Not finding one at the Survey, he sent to Bausch and Laumb in New York for one.

However, they had just sold their last one, and it was then necessary to send to Germany for the needle.

As soon as the request was off to Germany, and Dr. Hielsher realized that it wouldn't be too long before it arrived, he asked me if I would be willing to be his assistant on a reconnaissance job in Georgian Bay. I jumped at the chance. He said he would ask my Chief to grant me a six-week leave of absence.

Realizing that Dr. Hielsher would have little use for the magnetic dip needle after the Canadian project was finished, Chief Buehler asked the Board of Curators for permission to acquire the instrument. It was the Board of Curators that had to O.K. any extras that the Survey needed. He told them that after Dr. Hielsher used it, we would be the only institution in the U.S. to possess a magnetic dip needle. He proposed to notify all the states directly surrounding Missouri that we had it, and would lend it to other educational institutions.

It arrived in about 10 days, with instructions for use in German. A group of us went on the campus and found that the instrument worked when we followed all the underground steam line and pipe connections. We mapped these for the school. Our next job was to figure out how to make the calculations. I couldn't read enough German to translate the instructions, but through trial and error we managed to calculate the footage so that we all could understand it.

When my leave was approved, with the provision that I provided the Chief with a report of the time spent in Ontario, I left for Chicago, then via a tourist ship called "The Missouri," I set out for my destination: Killarney Province in Canada, off Georgian Bay.

The Hielshers greeted me when I arrived, and we spent some time getting to know the immediate area. Our first project was to cover a new segment of

diorite dykes to follow the magnetic iron ore deposits and take readings on them. While the picnic lunch was being prepared for this excursion, I went for a walk around the small island. I was amazed to see an outcrop of Devonian shale at the water's edge. A beautiful rainbow of oil fanned out from this side of the island into the Bay, the oil coming from an exposed oil-bearing formation beneath the impervious shale which was below the surface of the water. (I knew quite a bit about drilling for oil because, during my senior year at MSM, Dr. Cox had geologists from many states around Missouri lecture to us about how a group of farmers got together and decided to drill for oil. It had been only 17 years earlier, in 1895, that the first oil was brought in.)

Little did I know at that time, that my future was to be concerned with oil and drilling for oil in Tulsa, Okla.

The next day, Dr. Hielsher and our Indian guide and I started on a long trek over the glaciated hills of Laurentian rocks and through densely wooded areas to take our readings of a prescribed spot on the map. Dr. Helen and other guests always went with us, treating each day as a picnic. That day we also went through an area which had many saplings lying down. I asked the guide what caused the disturbance of the trees and the guide said, "Oh, the bears are just ahead of us." I closed ranks suddenly, and stuck to the heels of the guide when he said, "Don't be afraid—they know me, and know I won't harm them. I don't kill." He went on to say that the bears loved to eat just the top leaves of the young saplings that they could knock down with one paw. They would eat the leaves and the saplings would spring back up after they left. (25 years later I found that the terminal buds in the saplings contained a concentration of vitamins. Here in Canada, those bears and their ancestors knew about this for thousands of years, but human beings only discovered it in this century!)

We planned five weeks of field

work—walking 32 miles along diorite dykes and taking the magnetic needle readings. The last week was to be devoted to writing our report. Dr. Hielsher and I kept separate daily reports of our work because he often saw something I missed and vice versa.

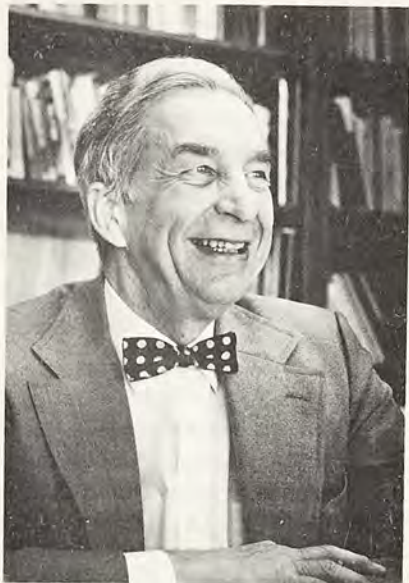
We finished the report and I left for Rolla on "The Missouri" on a Wednesday night at 9 p.m. The boat carried hundreds of bales of cinnamon bear hides headed for the fur market in Chicago. The bear hides commanded a high price because there were no shot holes in the skins—they had all been trapped.

Shortly after my return to Rolla, Dr. Hielsher came back and we discussed our reports with my Chief. I had already delivered the magnetic dip needle and it was now the property of the Survey. (This was in 1912—I wonder where that instrument ended up!)

Technical editing appealed to me more than mining engineering. I loved this work, was enthusiastic about it, and I think I did it very well. I edited about 20 manuscripts while I was at the Survey, all by different authors, and these books were published. I also wrote and published a report on all the various ores, clays, limestone, etc. that had been mined.

I found out later that all of the field work for some of the manuscripts had been done by Frank Cooke Greene. He was a geologist on the staff working at the United States Geological Survey in Washington, D.C. He had been "loaned" to the Bureau of Geology and Mines in Rolla for a certain length of time. Although Mr. Greene had completed all of the field work, only half of the writing of his report was completed. I had edited that much. At that point, David White wrote to Greene and told him to return to Washington and finish writing the rest of his report, there.

Frank Cooke Greene and I were married Dec. 18, 1913, in the same house where I was born. We spent our honeymoon in St. Louis, and set out for Washington, D.C. on Jan. 2, 1914.



## Human Factors Engineering Expert Is UMR Visiting Professor

If you've ever fumed because the appliance switch was unhandy, the dials were unreadable, or that some machine seemed to be designed for a physical dwarf or mental giant instead of an average person, you're in good company.

It's these small—and sometimes large—problems that are the province of Dr. Alphonse Chapanis, who was a visiting professor at the University of Missouri-Rolla Feb. 11-15. Dr. Chapanis is an expert in human factors engineering—designing machines for human use, taking into account human ability and limitations.

Since 1946, Chapanis has been at Johns Hopkins University where he established the first engineering psychology program in the world.

"Now there are 55 universities around the country that offer the program—and we cannot educate engineering psychologists fast enough to fill the demands of industry," he says.

Chapanis's research has ranged over a wide area of people-and-machines topics. These include such things as experimental psychology, computer science, vision, statistics and experimental design. His findings show up in such everyday things as color recommendations for best visibility and in the keyboard design of the push-button telephone.

For the past nine years, Chapanis has headed the Communications Research Laboratory in the department of psychology at Johns Hopkins. Recent studies have been on telecommunications systems, especially long distance conference calls. Now the group is working on what Chapanis calls the "man-computer interface."

"Specifically we are trying to design a 'user-friendly' computer," he explains. "We are trying to design a computer so that a first-time user can sit down without any instructions and start to use it. All instructions will be self-contained on the computer itself and the language designed so that it is natural and easy to use."

Chapanis has been a consultant for many governmental agencies and industry, and recently was asked to write a human factors evaluation of human errors in the Three-Mile Island Nuclear Plant accident.

He is irritated when accidents are attributed simply to human error—"because that doesn't tell you what to do about it," he explains.

"Sure, people make mistakes," he says, "but the solution is to try to design around these potential mistakes—first to reduce the possibility of error and second so that if a person does make a mistake, it will not have any unintended consequences."



## KATHY SCHROER

The old saying, "Like father, like son," has a new twist in the Schroer family, 11813 Lillian, Des Peres. It's "Like father, like daughter" in that household.

Kathy, the Schroer's oldest daughter, is a senior in mechanical engineering at the University of Missouri-Rolla. Her father, Herb, is a 1960 mechanical engineering graduate of UMR and is now a mechanical engineer with William Tao and Associates.

Kathy says that she never really considered any career other than engineering. "I like math and science, and, of course, I was familiar with what engineers do because of my dad," she explains.

She has been an honor student all the way, and was elected to membership in Pi Tau Sigma and Tau Beta Pi honor societies. She has also been active in student chapters of the Society of Women Engineers and the American Society of Mechanical Engineers.

She will receive her B.S. degree in mechanical engineering in May and is interviewing for a job. She wants to work in production or manufacturing. And she has one other stipulation: she wants to work in St. Louis. In October she'll be married to another UMR graduate, Gary Rapp, who received his electrical engineering degree in 1978 and is now employed by Western Electric in St. Louis.

# GIBBS TOURS CHINA



Past MSPE President William R. Gibbs, PE, toured China earlier this year with a delegation of engineers in an effort to establish an exchange program with that country.

According to Gibbs, a Black & Veatch partner, the three week tour was made in response to an invitation by the Chinese Civil Engineering Society to help the People's Republic of China arrive at a state of relative modernity by the year 2000.

Gibbs and his fellow delegates began the trip in Beijing (Peking), the capital of the PRC, where they made a full-day presentation of talks, slide shows and motion pictures to an audience of 400 engineers.

As Gibbs explained, it was all part of PRC's development plans. "They wish to accelerate their modernization process through the use of U.S. technical assistance," he said.

Interpretation of the delegation's input was good, according to Gibbs, despite problems with the translation of technical terms.

Describing the level of technical knowledge as "quite high among the engineers they met," Gibbs added that

"the Chinese presently lack the systems and procedures to apply the knowledge to the kinds of projects the country needs."

Following the Americans' presentations, the delegates toured various construction sites to explore opportunities for future involvement in design and/or construction management. On the average, they found the PRC "more developed and organized than expected."

Gibbs and his associates visited well-engineered precast and prestressed concrete construction sites and transportation systems designed for highway, railroad and bicycle travel.

They also saw irrigation developments that take water from major rivers, tunnel through mountain ranges and convey water into distant valley and watersheds.

Termed "fantastic" by Gibbs, the Chinese irrigation canals were often as big as intercoastal waterways located in the U.S.

One area of technology where the delegation found the Chinese far behind was environmental engineering, specifically in reference to the primitive

*William R. Gibbs was awarded a professional degree (civil engineer) by UMR in 1977. The story is reprinted from the December, 1979 issue of Missouri Engineer, published by the Missouri Society of Professional Engineers.*

methods of waste collection and disposal and the lack of sufficient sanitary facilities.

In many cases domestic wastes, both liquid and solid, are still collected and transported by manually drawn carts, laded into field cesspools and carried in buckets to be applied directly to crops.

Assessing the Chinese intentions after his return, Gibbs said, "They want to pick our brains for information and then do the work themselves, which seems the natural attitude for a country with such a large population."

## Kaiser Endowment Fund

An endowment fund which will support scholarships for deserving students in engineering and related fields has been established at UMR by Kaiser Aluminum and Chemical Corp., Oakland, Calif.

Kaiser recently contributed \$90,000 toward the endowment which is intended to total \$150,000 by 1983. Scholarships will be provided from interest earned from this endowment.

Kaiser has had a scholarship program on the Rolla campus for 20 years and currently makes awards totaling \$8,000 annually. The endowment programs are being established at approximately 20 schools in the country which provide most of the Kaiser employees. UMR is the only school in Missouri to receive a Kaiser endowment. Of the 48 University of Missouri alumni who are employed by the corporation, 33 attend UMR.

Howard Nelson, corporate vice president who made the presentation to UMR, said that the new program will place special emphasis on scholarships and fellowships for minority students and women.

"We wanted to put our scholarship/fellowship program, which previously has been funded by annual gifts, on a more permanent and continuing basis," Nelson said. "Establishing an endowment does this."

# MINER SPORTS

Gene Green, Sports Editor



Coach Annette Caruso, right, presents senior Karen Williamson with an award for being UMR's most-valuable-player in 1979-80, as her teammates look on.

## Williamson Bows Out After 103 Straight Starts

There was always one thing Miner fans could be certain of when they attended a UMR Women's basketball game...Karen Williamson would be in the starting lineup.

Williamson finished her collegiate career Feb. 20, starting in her 103rd consecutive ballgame.!

The Miners lost in that outing 66-55 to Northeast Missouri in the opening game of the MAIAW State Tournament in Joplin, but the hustling senior from Marion, Iowa would not be denied.

She led the Miners with 21 points in the finale, and was named to the all-tournament team for her efforts.

Williamson's 10.5 average in 1979-80 helped lead the Miners to a 13-8 record, as she impressed all by giving 110% every minute she was on the floor.

Lady Miner averages for the season were as follows: Carmen Baker-16.2, Barb Berry-15.7 and 10.6 rebounds per game, Karen Peacock-13.5, Williamson-10.5, Becky Ommen-6.2, Dolly Johnson-3.3, Darlene Bramel-2.8, Becky Kovarik-2.4, Valerie Lewis-1.9,

Sandy Hunter-1.5, Beth Eberle-1.0, Tina Walker-0.2 and Chris Barkey-0.0.

Miner coach Annette Caruso has nothing but praise for her team—and the lone graduating senior, Williamson.

Caruso has the rest of the team returning, and looks for great things next season.

She not only has proven scorers in Baker and Peacock, but also has Berry for a second season. It was hard to believe that the 6'1" Sedalia native was only a freshman this year.

"I think Berry is going to be real tough next year," Caruso said. "She came into a situation where she had to pickup up the slack left by Dallas Kirk, who averaged about 20 points and 15 rebounds for us last season.

"And she did a great job."

What do the Miners need to improve on for next season?

"Our shooting percentage was poor (42% for the year), and since I felt we were one of the best defensive teams in the district, this was the reason for some of our losses."

## Nesbitt Ends Fine Career

Although the 1979-80 basketball season ended in defeat, University of Missouri-Rolla basketball fans stood in tribute to the play of senior forward Derek Nesbitt.

UMR lost to Southeast Missouri State 100-93 Feb. 27, ending their season at 11-14 overall, and 5-7 in MIAA play. Nesbitt fouled out of the game with a little over a minute to play, and the home crowd gave the senior a three-minute standing ovation.

Nesbitt, however, wasn't the only senior to go out on a high note, as Calvin Horhn finished his UMR playing career with 18 points. The Jackson, Miss. native averaged 11.4 points per game, and was named as an honorable mention member of the MIAA All-Conference team.

UMR will also lose Gary Riechmann and Jerry Watkins to graduation, as the Miner coaching staff starts the job of filling those gaps.

Miner fans were excited this season by the passing and ball-handling talents of sophomore Leonardo Lucas, who ended the year as the second-leading scorer on the team. Lucas averaged 11.7 for the Miners, paced the team in assists with 96, and was named on the MIAA honorable mention team.

Other averages were: Jeff Kipp-8.9, Rick Fuerman-8.6, Riechman-8.0, Kurt Bauer-5.4, Watkins-2.9, Scott Sanbothe-2.2, Tom Mazzorana-1.4, Rob Goodenow-1.2, Bruce Tappmeyer-0.9, Ted Haas-0.5, Kurt Lotenzer-0.7, and Frank Landwehr-0.4.

Nesbitt paced the Miners in scoring 21 out of 25 games, and was the leading rebounder in 22 of the contests. He finished in the top three in virtually every category in the MIAA.

"We have had some fine players here at UMR, but Derek has possibly been the purest shooter of them all," Key added. "We will miss him very much...he did quite a job while he played here."

## **WOMEN'S SOFTBALL... New Kid On The Block**

On March 20, something entirely new enters the UMR varsity sports picture...women's fast-pitch softball.

Sarah Preston will coach the sport, as the Miners will compete their initial season in NCAA Division III. Even though the roster is not set at this time, Preston is optimistic about the first season.

"There will be other opponents who will be in their first season also," she said. "We hope to hold our own in division III, and do a good job."

In preparation for the season, Preston started the players practicing Jan. 25.

"The weather has been somewhat of a drawback," she said. "But we have made the most of our indoor conditioning."

The squad started with stretching exercises and a weight program, designed to provide flexibility and the strength needed over a long season.

It was after this conditioning, that throwing and batting was added to the daily curriculum.

"We have about 20 players out, so hopefully there will be some fine players produced," Preston said. "It will be tough playing against some of the Division II teams this season, but I am a believer that to improve, you must play quality competition."

## **Outdoor Track**

The UMR track team will try to rely on some talented returnees and promising newcomers in 1980, as they seek to better their sixth-place finish in the MIAA.

Coach Dewey Allgood will have senior pole-vaulter Bill Coppoc returning along with juniors Rick Lux, Craig Heath, Roddy Rodgers, Brent Haefner, Glenn Heeter and Jeff Russom. Some added assistance could come from freshmen Derrick Robinson and Courtney Davis, and sophomore Leonardo Lucas.

"I expect we will be stronger in the relays this season," Allgood predicted. "And we have four freshmen half milers who should help in the middle distances."

## **Baseball Miners Start Season In Florida**

With 16 lettermen returning from last year's 11-14 squad, UMR baseball coach Chuck Broyles is hopeful his Miners will improve in 1980.

"We are capable of beating anyone on our schedule," Broyles predicted. "It is a varied schedule, with competition ranging from junior colleges to Division I teams."

One of the reasons for the variety of opponents is a spring trip March 9-15 to Panama City, Florida. During this week, the Miners will battle a variety of teams in a week of fitness and training.

"The trip will be the highlight for our players," Broyles said. "We have never traveled this far for competition before, and everyone is excited about it."

Lincoln University, Southeast Missouri State and Central Missouri State are just some of the other area teams that will be in the Panama City event.

The Miners will be paced by top returnees Jeff Walters (pitcher), Mike Bennett (third base), Gary Runge (catcher), Kent Eiffert (second-base), Rick Fuerman (first base) and Calvin Horhn (centerfield).

They will also be helped by newcomers such as Steve Garbs, Kevin DeBondt, and Ron Fisher.

Bennett and Runge were the top hitters on the team last season, turning in averages of .313 and .312 respectively. Walter had a 4-5 pitching record, with an earned-run-average of 2.67.

"It will be tough to win in the league, as many of the teams have some fine talent back," Broyles stressed. "But I think the spring trip will give us a good chance to get some things straightened out and get ready for the regular season."

## **Golfers Return Three Lettermen**

UMR golf coach Bud Mercier will have three returning lettermen this season when the Miners grace the links.

Although their first dual meet was snowed out March 3, the team headed south for some initial competition. Mercier and the Miners journeyed to the Padre Island Classic in Padre Island, Texas, March 10, for a week of golf action.

In the early practice sessions, senior Ron Choate had nailed down the number one spot for UMR, with juniors Dave Mueller and Rick Bruns numbers two and three respectively.

They are the only lettermen returning, with Choate bringing a 1979 stroke average of 79 into the season. Mueller and Bruns each averaged 80.

Rounding out the top five will be Gary Pohl and P. J. Moran, both freshmen. Also on the team will be Larry Giles, Kevin Rooney and Scott Terrill. Giles is a sophomore, with Rooney and Terrill freshmen.

"We had at least five good days outside, so we won't be entirely rusty when we go to Padre Island," Mercier noted. "We have some inexperience but they all have solid swings and good attitudes."

The highlight for area golf buffs will be April 11-12, when the Miners host the annual best-ball tournament.

UMR finished third in the MIAA in 1979.

## **Tennis**

UMR tennis coach, Ray Morgan will have five lettermen back for the 1980 season, as competition was scheduled to get underway March 18 with the Miners hosting Northeast and Southeast Missouri.

Eric Meyer, Jim Volker and Mark Mueller lead the way, as all three are seniors this year. Steve Ford and Lee Chandler round out the lettermen.

As of press time, the full team roster had not been finalized.



# FROM THE PAST...

Hendrika Parker, widow of Russell H. Parker, '29, has donated to UMR a collection of snapshots taken by her husband when he was on campus. We have reproduced some of the collection here with the captions Mr. Parker had used to identify them. If anyone can enlarge on these captions—with a more complete identification of the people shown or an explanation of the events—it will enhance the value of the collection and make it easier to file the photos properly.



Fall of 1925

14/MSM Alumnus



Out on the Frisco



Helen and George



Ralph, E



Jack Pott



Ralph, Rich and Lawrence



Just an old Spanish custom



The proverbial fly paper race



Jack Potter and Duncan



The Circus—'28

# HE'S AN INTERNATIONAL FRIEND

Lou Moss speaks with a typical Missouri drawl. But, as UMR's international student adviser, he hears many different accents.

And, those accents automatically translate into understanding and helpful action on his part. The following excerpt from a letter is an illustration of his talent.

"Among all of us, in whose hearts you have carved the emblems of responsibility and friendship, your name will always be honored as that of the educator-through-example of the most difficult of all disciplines...that of being kind."

These words were written by a grateful father in Lima, Peru, to Moss. The author, Daniel Rodriguez Hoyle, was referring to the extra care and attention Moss provided when his son, Daniel, was involved in an almost tragic accident here in Rolla last September.

The younger Daniel, a senior in economics, was exhibiting his skill on a skateboard when a fall resulted in a serious skull fracture. Daniel's sister, Mariana, a junior in civil engineering, called Moss from Phelps County Hospital to tell him about the accident. By the time Moss arrived, Daniel was in an ambulance ready to be transferred to the Medical Center in Columbia. Moss followed the ambulance in his own car, stayed with Mariana throughout Daniel's critical period and helped her explain the situation by phone to her parents in Peru.

"This type of event is rare, but not unusual," Moss says. "Emergencies, particularly the medical variety, are more frightening when you are thousands of miles from home and the language and customs are foreign.

Moss makes it a point to get personally acquainted with each international student when he or she first

arrives on campus. This means taking the time for an in-depth interview with each one. He talks with them about their home and background, their likes and dislikes, and makes some evaluation of areas where the student may need special assistance. These might include further language training, off-campus housing, immigration forms, documents for travel arrangements, permission for summer work, financial arrangements through the students' embassies or even a local bank, and any number of personal problems. Throughout the student's stay at UMR, he is available for advice or assistance in any of these or any other unexpected areas.

He works closely with the student, when necessary, as liaison between faculty or various offices on campus. If

the student is married and has a family here, Moss may be called upon to extend his assistance to matters concerning the Rolla School System.

"It is fascinating and satisfying work," Moss says. "Most of the time, the students' problems are easy to solve and difficulties are usually a matter of interpreting customs and language differences."

The note of appreciation from Senor Rodriguez has been echoed by many parents and students though the years. (Incidentally, young Daniel fully recovered, received his degree in December, and is off to France to graduate school.)

Lou Moss is a friend of international students as well as an adviser. And, when you are a long way from home, it's nice to have a friend!



Garry Ward, University of Missouri-Rolla student, lets the computer do the searching as he tries out a computer catalog system which may replace the traditional card catalog at UMR's Wilson Library. The system, the Washington Library Network (WLN), is now being evaluated at libraries on all four University of Missouri campuses. Everyone—UMR students, faculty and staff, and the general public—is invited to come to the library for a demonstration. Library officials point out that guest patron library cards are available to anyone not connected with UMR who wishes to use library facilities. Ward, 705 Terrace, Neosho, is a sophomore in petroleum engineering.

9 a.m.  
10 a.m.  
LUN  
5:30 p  
5:30 p  
7 p.m.  
DINN  
9 p.m.  
BREA  
8 a.m.  
11:30  
1:30 p  
6:15 p  
7 p.m.  
9 p.m.  
\*Chec  
\*\*Rec  
Coord  
Coach  
Coach  
Holid  
Howar  
Interst  
Manor  
Nod-A  
Norma  
Plaza M  
Rolla F  
Rustic  
Town E  
Wayfar  
Zeno's  
Finn's  
Forest

**MSM-UMR ALUMNI ASSOCIATION  
1980 HOMECOMING TENTATIVE SCHEDULE**

Information Number 314/341-4172

**FRIDAY, OCTOBER 17**

- 9 a.m.-4:30 p.m. Registration in Miner Lounge  
University Center-East
- 10 a.m.-2 p.m. Board of Directors' Meeting, MSM-UMR Alumni Association,  
University Center-East
- LUNCH** On Your Own
- 5:30 p.m.-8 p.m. Silver and Gold Cocktail Party, St. Pat's Church  
Recreation Hall
- 5:30 p.m. Registration resumes at St. Pat's Church Recreation Hall
- 7 p.m. M-Club Bonfire, Intramural Field
- DINNER** On Your Own\*
- 9 p.m.-1 a.m. Student's Homecoming Dance, Centennial Hall

**SATURDAY, OCTOBER 18**

- BREAKFAST** On Your Own
- 8 a.m.-Noon Registration resumes in Miner Lounge, University Center-East
- 11:30 a.m. Fieldhouse Feed for all alumni and friends, featuring reserve  
seating for the Reunion Classes, Gale Bullman Multi-Purpose  
Building. CLASS PICTURES WILL BE TAKEN.
- 1:30 p.m. Kickoff—Miners vs. Springfield Bears
- 6:15 p.m. Miner Lounge open for pre-banquet festivities (adjacent to  
Centennial Hall in University Center)\*\*
- 7 p.m.-9 p.m. Alumni Awards Banquet, University Center Centennial Hall
- 9 p.m. Annual Meeting, MSM-UMR Alumni Association

\*Check at Registration Desk for special events scheduled for Reunion Classes

\*\*Reception on University property.

Coordination of Alumni Activities will be handled at the Registration Desk.

**ROLLA**

Coach House Inn, Martin Springs Dr.....	341-3130
Coachlight "Best Western" Inn, Martin Springs Dr.....	341-2511
Holiday Inn, Martin Springs Dr.....	364-5200
Howard Johnson Motor Lodge, I-44 & Bus. I-44.....	364-7111
Interstate Motel, Martin Springs Dr.....	341-2158
Manor Inn, Hwy. I-44 & 63.....	364-1575
Nod-A-Way Motel, Hwy. 63 N.....	364-7445
Norman Dee Inn Motel, Bus. I-44 West.....	364-4156
Plaza Motel, Hwy. 63 N.....	341-2555
Rolla Rancho Motel, Martin Springs Dr.....	364-4509
Rustic Motel, Hwy. 63 S.....	364-6943
Town House, Bus. I-44 West.....	341-3700
Wayfarer Inn, Martin Springs Dr.....	364-3333
Zeno's Motel, Martin Springs Dr.....	364-1301

**ST. JAMES**

Finn's Motel, I-44 & 68.....	265-7200
Forest City Motor Lodge, I-44 & 68.....	265-3256

## **Backpacking And Camping Course**

Beginning with the fall semester, the University of Missouri-Rolla will offer "Camping and Backpacking" as a one-hour physical education credit course.

The course will be presented in an attempt to make the pursuit of nature not only more enjoyable...but less expensive!

"We will learn how to pack a backpack in regard to weight distribution," said course instructor Sarah Preston. "The class also will be taught concepts of orienteering and the use of topographical maps."

Preston stressed that there are five types of campgrounds available to the American public, national parks, national forests, state parks, county and regional parks and commercial campgrounds.

No matter what type of camping you prefer, the course instruction on choosing personal equipment, clothing, food, shelter, etc. will be a handy addition to your outdoor knowledge.

And there will be added highlights.

"Some time will be spent on constructing a solar food dryer to prepare food for camping and backpacking," Preston said. "It is very easy to construct and can be quite useful."

After all the items on the course are completed, an actual camping and backpacking outing will be featured.

"We will take a weekend trip, with the students helping plan the format and put to use things learned in the class," Preston said. "It should give us a good chance to see how the work in the classroom can be applied to the outdoor situations."

The class will meet each Tuesday night during the fall semester from 7-9 in the Multi-Purpose Building at UMR.

"Students have shown an interest in having a class of this nature established, and we are hoping that it will be a very helpful aid to their outdoor recreation," Preston concluded.

# ALUMNI MEET AT AIME...

The Miners gathered during the annual AIME meeting in Las Vegas with a hospitality room on Monday evening, Feb. 25, 1980. Arrangements were made by Association director Vic Hoffman and his charming bride, Rosey. About 80 signed the register and probably 20 more whipped in and whipped

out. On automatic was a slide show of the five year proposed master plan of the MSM-UMR campus. The earth sheltered structure, which is the highest priority, will house the School of Mines and Metallurgy and it commanded great interest. Of course, some alumni wondered why we wanted a building,

since we have gotten along for 110 years without adequate quarters for our traditional disciplines. As this is written, the capital appropriation has not yet had action, but we are confident of widespread interest and support in the Missouri General Assembly.



Those who signed the sheet were: George E. and Mrs. Stourton, '60, League City, Texas; Jim Jahagirdar, '71, Douglas, Ariz.; Vic and Rosey Hoffman, '60, Kent, Wash.; Harty and Helga Schweigart, '63, Golden, Colo.; Calvin

J. Konya, '66, Huntsburg, Ohio; Harvey Martin, '62, Birmingham, Ala.; Andy Cochran, '41, Rolla, Mo.; S. A. "Stoney" and Vi Stone, '30, Ft. Wayne, Ind.; Beryl and Bob Winkle, '42, Tucson, Ariz.; Terral Young, '66, Battle

Mt., N.Y.; J. K. Richardson, '32, Scottsdale, Ariz.; Fred Todd, '48, Fullerton, Calif.; Joe and Charlotte Quinn, '49, Geneva, Ill.; Bob Piekarz, '61, Reno, Nev.; Horace B. Ham, '50, Gunnison, Colo.; Duk-Won Park, '75, Morgan-

IN  
town,  
Ohio;  
Houston  
'36, G  
Rose, '  
Gladys  
Glen N  
Bill Ha  
LaBout  
Sphar,  
'74, Au  
James  
J. D. '  
Roger L  
mond F  
G. Jam

Scott, '50  
ing, '61,  
'70, Las  
'43, Auro  
Salt Lake  
Arthur  
Mo.; Ker  
Mo.; Kul  
N.Y.; Me  
Chicago,  
Mo.; Mar  
Ring, '50  
Choudary  
Timothy

# IN LAS VEGAS

town, W. Va.; Milt Leet, '62, Mentor, Ohio; Dick and Ruth Bullock, '51, Houston, Texas; Robert T. Chapman, '36, Green Valley, Ariz.; Robert M. Rose, '61, Port Lavaca, Texas; Al and Gladys Hartleb (guests), Belleville, Ill.; Glen N. Chaffin, '66, Cathlamet, Wash.; Bill Hallett, '55, Peoria, Ill.; Dean R. LaBoube, '73, Littleton, Colo.; Curt Sphar, '48, Littleton, Colo.; Joe Cesare, '74, Aurora, Colo.

James Huber, '73, Waynesburg, Pa.; J. D. Crites, '49, Ishpeming, Mich.; Roger Dewey, '69, Denver, Colo.; Raymond Fournelle, '64, Milwaukee, Wisc.; G. James Powell, '62, Trafford, Pa.;

Carlos and Joan Tiernon, '54, Ft. Wayne, Ind.; Henry P. Whaley, '48, Broadview, Heights, Ohio; Gary Hudiburgh, '74, Weirton, W. Va.; Lary and Sandy Miller, '58, Palatine, Ill.; Dean Kleinkopf, '51, Denver, Colo.; Gill Montgomery, '35, Eldorado, Ill.; Tom Weyand, '66, Monaca, Pa.; Art Morris, Rolla, Mo.; Tom O'Keefe, '58, Rolla, Mo.; John and Elise Arseneau, '73, Battle Mtn., Nev.; Ernie and Mollie Achterberg, '53, Tulsa, Okla.; Bill and Debby Mount, '73, Viburnum, Mo.; Paul Dean Proctor, Rolla, Mo.; Robert L. Root, '49, Aurora, Ga.; John C. Priscu, Las Vegas, Nev.; Jim and Edna



Scott, '50, Rolla, Mo.; H. Harvey Dewing, '61, Rolla, Mo.; Carey Krumick, '70, Las Vegas, Nev.; Kent Comann, '43, Aurora, Colo.; John Knoepke, '29, Salt Lake City, Utah.

Arthur A. Schweizer, '70, Salem, Mo.; Ken Gielow, '70, Herculaneum, Mo.; Kuldip Chopra, '61, Grand Island, N.Y.; Melvin E. and Mary Nickel, '38, Chicago, Ill.; Ernie Cole, '66, Rolla, Mo.; Manfred Wuttig, Rolla, Mo.; Jack Ring, '50, Las Vegas, Nev.; Naren Choudary, '73, Las Vegas, Nev.; Timothy M. Sadler, '76, Las Vegas,

Nev.; John F. "Jack" Burst, '43, Houston, Texas; William M. "Bill" Shepard, '51, Denver, Colo.; William J. Mallio, Lexiwork, Mass.; Claudia Gasparri, Thor Gjelsteen, Denver, Colo.; Walter J. Pojasek, Ipswich, Mass.; George Rainsville, Woburn, Mass.; T. A. Theobald, '62; Bartlesville, Okla.; Roger Clifford, Rolla, Mo.

If you don't see your name and you were there, you might have been one of the several whose signature only your banker can read. It was a great party, thanks to Rosey and Vic.

## UMR To Open New Driving Range

If golf is your game but your long ball has been falling short, you'll be able to drive yourself crazy when the University of Missouri-Rolla opens its new driving range at its golf course on May 12.

The facility, which will be the only one of its kind within a 30-mile radius of Rolla, will be open to the general public. Located near the clubhouse, the range will be lighted and open for use from 8-11 p.m. daily. A bucket of 35 balls will cost 75 cents.

"The addition of the driving range will double our use of existing golf course facilities," Stan Busch, golf course manager, said.

"In addition to giving UMR students, faculty, staff and the general public an opportunity to develop and sharpen their golfing skills, we can use the range for physical education classes, special lessons and various contests," he added. "We also plan to have a special reserved program for groups which might be interested in using it."

The range, intended for both woods and irons, will be approximately 300 yards long and about 150 yards wide. It will feature 10 hitting stations on an elevated tee area, and the actual hitting area will cover the first fairway and the rough area between the first and third fairways.

The addition of the facility of the golf course will not hinder normal golfing in any way, Busch stressed. And the lights will be placed so as not to inconvenience neighborhood residents, while the hitting area will be angled toward the football stadium for safety reasons.

Construction on the range is scheduled to begin some time in March.

# JOB OPPORTUNITIES

For information concerning positions listed below, please contact Mr. Larry Nuss, Director of Career Development & Placement, UMR, Rolla, Missouri 65401, giving File Number of the position, state your degree, discipline and month and year of your graduation. During times of high activity in the employment market, some positions will be filled before they are published. The Placement Office will make a search for similar positions that may be open if you enclose your resume with your inquiry.

- |  |  |   |
|--|--|---|
| 3018 Multi-disciplines, multi-openings | 3037 BSChE, southwest                        | 3056 BSEE, ME, CSc, upper midwest                     |
| 3019 BSME, Mgt, Kansas City            | 3038 BSMetE, ME, ChE                         | 3057 BSCE, ME, EE, CSc                                |
| 3020 Outdated                          | 3039 Multi-disciplines, multi-openings       | 3058 BSME, St. Louis                                  |
| 3021 BSME, CE, EE, Mgt, St. Louis      | 3040 BSME, EM, Phys, midwest                 | 3059 Multi-disciplines, multi-openings                |
| 3022 Outdated                          | 3041 BSMetE                                  | 3060 Multi-disciplines, multi-openings, southeast     |
| 3023 Outdated                          | 3042 BSME, Mgt, 5 yrs. exper.                | 3061 BSCE, ME, EE                                     |
| 3024 Outdated                          | 3043 BSME                                    | 3062 BS/MSChem, ChE, EE, CSc, multi openings, midwest |
| 3025 Outdated                          | 3044 BSCE, EE, ME                            | 3063 Multi-disciplines, multi-openings, southeast     |
| 3026 EE, EM, ME, CSc, northeast        | 3045 Multi-disciplines, multi-openings, west | 3064 PhDChem, upper midwest                           |
| 3027 BS/MSPPhys, ChE, midwest          | 3046 BSMetE, northeast                       | 3065 BSMInE, EE, southwest                            |
| 3028 BSMetE, northeast                 | 3047 BSEE, 5-10 yrs. power exper., west      | 3066 BSCerE, EE, CSc, MetE, multi-openings, west      |
| 3029 BSMetE, agency listing            | 3048 BSCerE, govt.                           | 3067 BSMInE, 5 yrs., underground exper.               |
| 3030 Outdated                          | 3049 BSCE, city govt.                        | 3068 BSEE, northeast                                  |
| 3031 BSMgt, EE, southeast              | 3050 BSCE, EE, ME, state govt.               | 3069 BSChem, midwest                                  |
| 3032 BSChem, EM, MetE, agency listing  | 3051 BS/MS/PhDChem, ChE, northeast           | 3070 BS/MSME  |
| 3033 Outdated                          | 3052 BSEE, power exper.                      |   |
| 3034 Outdated                          | 3053 BSEE, midwest                           |   |
| 3035 Outdated                          | 3054 BSEE, ME, Mgt., southeast               |   |
| 3036 Outdated                          | 3055 Outdated                                |   |

# EXTENSION NEWS

Here's a list of some of the extension continuing education short courses and conferences scheduled by UMR. Where titles are not self explanatory you may call for more detailed information including costs. Call the office of the dean of continuing education and public service, 314-341-4156. Written requests should be addressed to the same office, 204 Parker Hall, University of Missouri-Rolla, Rolla, Mo. 65401.

PROGRAM	LOCATION	DATES
Basic Corrosion	Kansas City	April 27-May 2
Time Management	St. Louis	April 28
Liquid Crystals	St. Louis, MO	May 12-13
Digital Signal Processing	Rolla	May 12-14
Geotechnical Lab Testing	Rolla	May 12-16
North American Manufacturing Research Conference VIII	Rolla	May 18-21
Database Management Systems	St. Louis	May 19-23
Fundamentals of Hydraulics and Hydrology of Dam Design	Rolla	May 19-23
Engineering Management Seminar	Rolla	May 19-23
PDMC Motor Design Short Course	Rolla	May 21-23
Underground Electrical Distribution Workshop	Overland Park, Kan.	May 21-23
Humanities & Aging Studies Conference	Rolla	May 22-24
Effective Speech for Scientists and Engineers	Rolla	June 2-4
Jackling Minerals Industries Careers Institute	Rolla	June 15-27
1980 Summer Elements of Engineering	Rolla	June 22-27
Drilling Workshop	St. Louis	Summer
Hydrologic Modeling	St. Louis	Summer
Embankment Dams Soils Aspects Short Course	St. Louis	July
Machine Foundation Design	St. Louis	July
Porcelain Artist's Workshop	St. Louis	July 21-25
1980 Summer Program in Engineering Drawing	Rolla	July 28-31
Land Surveyor's Refresher Short Course	Rolla	July 28-Aug. 8
Introductory Short Course on Composition of Paints	Rolla	August 14-16
Basic Quality Control Short Course	Rolla	Aug. 18-23
	Rolla	Aug. 25-29

Times and dates of courses may change nearer the time of the course.

WAL  
Walt  
emeritus  
and his  
of the M  
Univers  
distingui  
former  
engineer  
came to  
tant pro  
was cha  
and dur  
advocate  
"Doc"  
thousan  
born in  
through  
special ir  
One of  
ing arm  
to Monr  
his Bach  
benefact  
subsequ  
faith in  
fluence a  
life was  
go on to  
where he  
in 1919  
1922.  
For 56  
figure in  
case, com  
ing strear  
engineer,  
ity to in  
students.  
societies o  
his contr  
societies v  
tion, gave  
with his  
laureates  
and Chan  
as nation  
Sigma, as  
career, led

# MEMORIAL RESOLUTIONS

Copies Of These Resolutions Have Been Sent To Surviving Members Of The Families

## WALTER T. SCHRENK

Walter T. Schrenk, professor emeritus, died on December 8, 1979, and his passing ended an era in the life of the Missouri School of Mines and the University of Missouri-Rolla. This distinguished chemist, teacher, and former chairman of the chemical engineering, chemistry department came to the campus in 1923 as an assistant professor. From 1929 to 1956 he was chairman of the joint department and during his tenure was its stalwart advocate.

"Doc", as he was known to the thousands whose lives he touched, was born in 1891 in Golconda, Illinois and throughout his life saw something special in the land of southern Illinois.

One of a large family, it was his pitching arm that took him away from home to Monmouth College, where he earned his Bachelor of Science in 1915. His benefactions to Monmouth and his subsequent career testify to his enduring faith in the power of a teacher to influence a youth. For on that campus, his life was touched, and he was inspired to go on to the University of Wisconsin where he earned the Master of Science in 1919 and the Doctor of Philosophy in 1922.

For 56 years Doc was a prominent figure in this community, and in his case, community included the surrounding streams and fields. A professional engineer, he had the desire and the ability to instill professionalism in his students. His active life in the honorary societies of which he was a member and his contributions to the professional societies which commanded his attention, gave him rewarding associations with his peers, which included nobel laureates Linus Pauling, E. A. Doisey and Chancellor Compton. Doc's service as national president of Alpha Chi Sigma, as well as his distinguished career, led historian Jeffrey M. Bushnell

to say, in his successful nomination of Dr. Schrenk to the highest honor of Alpha Chi Sigma, the Kuebler Award, "Not nearly enough can be said for this man. In a sense his record alone speaks very highly, but there must be something more than mere tangible attainments...Dr. Schrenk remembered that he didn't live in a world all by himself. It is this altruistic attitude that he has carried with him throughout his life that has made him such a great man...earned the admiration and respect of countless people." And that altruistic attitude has been perpetuated beyond his life through his past benefactions to this university and through those that he has provided to come after his death.

We are today comforted to know that a good and great man can extend his influence into perpetuity.

## LEON HERSHKOWITZ

Leon Hershkowitz was born November 13, 1903, in Iola, Kansas. He first entered UMR (then known as the University of Missouri School of Mines and Metallurgy) in 1922. Due to financial reasons, he left school before completing his degree and worked for several organizations, including the Frisco Railroad, the Illinois State Highway Department, and, through the great depression, the Civilian Conservation Corps.

In 1940 he returned to Rolla, and graduated a year later with a Bachelor of Science degree in Civil Engineering. He had received a reserve commission in the Corps of Engineers, U.S. Army, in 1926, was called to active duty in 1941, and after serving several years in the South Pacific theater, was discharged from active duty in 1945 with the rank of Lieutenant Colonel.

In 1946 he again returned to the Rolla campus, joined the Civil Engineering Department staff, and advanced through the positions of Instructor, Assistant Professor, and Associate Pro-

fessor, receiving the rank of Professor of Civil Engineering in 1957. During that period, he also obtained a M.S. degree in Civil Engineering in 1948 and his earned professional degree in 1949. On September 1, 1959, he was named Assistant Dean of Faculties, which at that time was the second highest administrative office on campus. Later, when the administrative structure of UMR changed, he became Director of the Placement Office; he served in that capacity until his retirement in 1969. From that time until his death on January 22, 1980, he held the rank of Professor Emeritus of Civil Engineering.

Leon was a Professional Engineer, a member of the UMR Academy of Civil Engineers, the Chamber of Commerce, Rolla Masonic Lodge 213 and the Order of the Eastern Star. In 1926 he married Helene Strobach and in 1976 they celebrated their golden anniversary along with the festivities of our country's 200th year.

He served on many faculty committees and for a number of years was chairman of the committee of commencement and public occasions. He also received a citation of merit from

MSM-UMR Alumni Association for serving 15 years as its secretary-treasurer.

Leon worked closely with his students, both as a teacher and later as Director of the Placement Office. In these capacities he gained their respect as one always available to help and advise. As a member of Tau Beta Pi, Chi Epsilon, and Alpha Epsilon Pi fraternities he was always ready to participate in their activities and he devoted many long hours to their successful operation.

Leon Hershkowitz will be missed by all who knew him, whether they were students, his colleagues on the faculty, or members of the companies that regularly recruited on campus. He will always be remembered as one who brought recognition to UMR through his untiring and dedicated efforts.



# Faculty Personals



**THEODORE J. PLANJE**

## **Planje Receives Bleininger Award**

Dr. Theodore J. Planje, dean of the School of Mines and Metallurgy at the University of Missouri-Rolla, became the 33rd recipient of the Albert Victor Bleininger Award in ceremonies Friday, March 7, in Pittsburgh, Pa.

This honor was given Dean Planje by the Pittsburgh section of the American Ceramic Society in recognition of "distinguished achievements in the field of ceramics."

The award, which consists of a medal and a citation, has been presented annually since 1948 in honor of Dr. Bleininger, a founder and past president of the American Ceramic Society.

Dean Planje received his academic degrees from UMR and has been a member of the faculty since 1946. He served as professor and chairman of the ceramic engineering department from 1955 to 1964 when he became dean. In 1979 he was given an additional appointment of assistant to the UMR chancellor for research.

Dr. Planje is a Fellow of the American Ceramic Society and has served that organization as vice president, treasurer, president-elect and president (1972-73).

22 / MSM Alumnus



**HARRY S. SAUER JR.**

## **Hank Sauer Honored**

Hank Sauer is an ASHRAE Fellow!

What this really means is that Hank, Dr. Harry J. Sauer Jr., professor of mechanical and aerospace engineering at the University of Missouri-Rolla, is one of 15 engineers to be elevated to the honorary grade of Fellow in the American Society of Heating, Refrigeration and Air Conditioning Engineers. That organization has 38,000 members from the United States and 114 other countries.

ASHRAE is known for its development of standards for products, processes and testing. Its Standard 90-75, entitled "Energy Conservation in New Building Design," is either already incorporated or in the process of being incorporated into the building codes of some 45 states. The society, founded in 1894, has an unusually active research program, with a research and technical budget exceeding \$1.2 million. It works closely with the Department of Energy, the National Bureau of Standards, and other government agencies concerned with energy problems.

The 15 new Fellows, 13 from the United States, one from England and one from Denmark, were recognized for having attained distinction through significant engineering achievements in the ASHRAE field. Dr. Sauer was cited specifically for his research and teaching in heat transfer and thermodynamics.

Professor Sauer is involved in a number of projects in which he serves either as principal investigator or works with other UMR faculty from his own department or other departments. One of these projects is entitled "Development of Standard Testing Procedures for Determining the Performance of Air-to-Air Energy Recovery Equipment for Building Air-Conditioning Systems."

"Devices are available which can recapture the heat or 'cool' from conditioned air before it is exhausted from a building," Dr. Sauer says. "This heat is then transferred to or from the incoming air supply. The use of such exchangers, by some estimates, can reduce winter energy consumption by around 30 to 35 percent and summer air-conditioning energy consumption by 15 to 20 percent. In our study, we are attempting to develop standards of performance for the various systems which are on the market." The project is supported by a \$76,000 grant from ASHRAE.

This is not the first ASHRAE award Dr. Sauer has received. He joined the UMR faculty in 1957 and became a member of ASHRAE in 1963, and has served on many of the organization's committees since that time. He won the ASHRAE award for Best Research Technical Paper in 1974 and was the recipient of the Hermann F. Spoehrer Memorial Award of the St. Louis ASHRAE chapter in 1979.

Hank and his wife, Pat, are parents of nine children. The oldest, John, received his B.A. in philosophy from UMR in 1979. Liz (mechanical engineering) and Carl (metallurgical engineering) are currently students at UMR.

St. L.  
Sec  
Elec  
Offi

The S  
its 1980  
dent is E  
Howard  
Inc., M  
at 113 S

Treas  
Bob is r  
His ho  
Clayton

Roy  
year as  
Hopson  
and resi  
St. Char

Amor  
year a  
Homecc  
miral E  
decision  
Louis),  
ment, a  
summer

Any a  
area w  
notices  
tions are  
ficers to

T

F

S

Yo

# Alumni Personals

## St. Louis Section Elects New Officers

The St. Louis Section has announced its 1980 slate of officers. The new president is Howard H. Stine, Jr. 1967, 1969. Howard is vice president of Systemaire Inc., Mechanical Contractors and lives at 113 Shady Valley Dr., Chesterfield.

Treasurer is Bob Bruce, 1969, 1970. Bob is regional vice president of Intrav. His home address is 15 Carrswold, Clayton.

Roy Van Hee, Jr. 1969 will serve this year as secretary. Roy is employed by Hopson & Associates, Inc. as a principal and resides at 607 Willow Wood Court, St. Charles.

Among the events planned for this year are the traditional party at Homecoming October 17-18, the Admiral Excursion in the fall (awaiting decision of The Admiral's future in St. Louis), and twelfth annual golf tournament, and the section's third annual summer Cardinal baseball game.

Any alumni in or near the St. Louis area who have not been receiving notices of the St. Louis section's functions are invited to contact one of the officers to be put on the mailing list.

**The Alumnus  
Welcomes  
News Items  
From Alumni**  
— — — —  
**Please  
Send Pictures  
If  
You Have Them**

### 1910

The alumni office recently received news of the death, on Feb. 4, of **Reuben C. Thompson** of Sun City, Calif.

### 1917

**Emmett L. Arnold**, McAllen, Texas passed away April 2, 1979 in San Antonio at the age of 89. News was recently received from his daughter, Anne Arnold Crabb.

### 1924

Notice has been received of the death of **George T. Dierking** on Feb. 22, 1980. He was a retired civil engineer with Ford, Bacon and Davis Co., Monroe, La. He is survived by his wife, Myrtle, 5709 Center Point Lane, Sarasota, FL 33583, and three daughters.

News was recently received of the death of **Leo Schapiro** on January 6. He had been living in Encino, California.

### 1925

**Marion L. and Virginia Atkinson** are enjoying retirement in sunny Florida. Their home is 791 NE 69th St., Boca Raton, FL 33431

### 1926

**W. Irwin Short**, professor emeritus at the University of Pittsburgh, died Feb. 17, 1980. in Boca Raton, Fla. He is survived by his wife, Harriett, 400 NE 20th St., Boca Raton, FL 33431.

### 1928

**Rupert P. and Marguerite Baumgartner** celebrated 50 years of marriage on September 17, 1979. Rupert is retired. They live at 10402 Camden Ave., Sun City, AZ 85357.

News has been received of the death of **Robert C. Ledford** on Dec. 29, 1979. His widow, Ona Mae, is home at 115 North B St., Yale, OK 74085.

**Henry Emmett and Margrete Gross** live at 1141 South Elm Avenue, Webster Groves, MO 63119. Henry's retired. He sent along a note that **John W. Laytham Sr.**, '28, is confined in Bethesda-Dilworth Home, 9645 Big Bend Blvd., Kirkwood, MO 63122. The **Laythams, Sr. & Jr.**, '52, are both civil engineering grads.

The Alumni office has been notified recently of the death of **Thomas Daniel Murphy** on February 24, 1980.

## 1929 and Before

### Reunion At Homecoming Class Coordinators:

**Thomas O. English '29**  
605 Bergstrom Place  
Marshall, TX 75670

**Wayne S. Frame '23**  
R. R. 3  
Eldon, MO 65026

**Charles A. Freeman '28**  
5 Via Delizia  
Hillsborough, CA 94010

**Elmer Gammeter '26**  
118 Duncan Cir-Windermere  
Beaver, PA 15009

**William E. H. Knight '24**  
1173 Grand  
Carthage, MO 64836

**Edwin G. Machin '22**  
P. O. Box 175  
Nashville, IL 62263

**William K. Schweickhardt '28**  
417 North Woodlawn Ave.  
Kirkwood, MO 63122

## Alumni Personals

1930

**Reunion at Homecoming  
Class Coordinators:**

**C. James Grimm**  
Box 105  
Rolla, MO 65401

**S. Allan Stone**  
1405 Three Rivers East  
Ft. Wayne, IN 46802

**Dr. Walter D. Keller**, senior research professor at the University of Missouri-Columbia department of geology, has been awarded the 1978 Hal Williams Hardinge Award by the American Institute of Mining, Metallurgical and Petroleum Engineers. Professor emeritus Keller was cited as "an outstanding member of the mineral industry whose more than 150 publications in geology and geochemical journals have provided invaluable aid to the clay industry." Dr. Keller was also awarded the Distinguished Member Award for the Society of Mining Engineers Oct. 19, 1979 in Tucson, Ariz. on the basis of his "contributions to the technology or professional activities" of the Society of Mining Engineers, part of the American Institute of Mining Engineers.

1934

**Richard J. Dobson** is vice president of operations for Gruy Federal Inc., of Houston, Texas. "The company is engaged in programs for the U.S. Department of Energy, principally investigating geopressured-geothermal energy sources, hot water sources, enhanced oil and gas recovery and economic modeling. I also participate in some very dry holes." He and Mary live at 11680 Memorial Drive, Houston, TX 77024.

1935

**Reunion At Homecoming  
Class Coordinators:**

**Oliver W. Kamper**  
16417 111th Ave.  
Sun City, AZ 85351

**August P. Koopmann**  
9101 Flores Drive  
St. Louis, MO 63123

**James J. Murphy**  
Murphy Company  
1340 North Price Road  
St. Louis, MO 63132

1937

**Peter F. Mattei**, PE, has been appointed by the East-West Gateway Coordinating Council to the Environment Task Force and Water Quality Committee of St. Louis. Pete's home address is 9954 Holliston Court, St. Louis, MO 63124.

1938

News has been received of the death of **John Robert McCloskey** of Joplin, Mo. on November 9, 1979.

1939

News has been received of the death of **Herbert F. Crecelius** in Coral Gables, Fla., on Dec. 29, 1979. He was a retired U.S. Army Lt. Col.

1940

**Reunion at Homecoming  
Class Coordinators:**

**Rex Alford**  
5743 Jason  
Houston, TX 77096

**George E. Fort**  
1384-C First Nat'l Center  
Oklahoma City, OK 73102

**Paul T. Dowling** has been elected vice chairman for communications of the St. Louis Regional Commerce & Growth Association. Paul is chairman of the board of Nooter Corp. He and Eleanor live at 10144 Winding Ridge Road, St. Louis, MO 63124.

1979 Rollamo



Alu

HE

SPS Tec  
named E  
tion of c  
is presid  
dustrial  
Technol  
of aeros  
and his  
Road, D

A. J. "J  
processing  
Company  
Center, S  
His hom  
Place, Sc

1942

Sam Kur  
with a  
commerc  
associate  
He and  
Pendleton

1943

Roy L. K  
professor  
lege in St.  
moved to  
Joseph, M

## Alumni Personals



**HERBERT D. STURGES**

SPS Technologies, Jenkintown, Pa., has named **Herbert D. Sturges** to the position of corporate vice president. Herbert is president of the Aerospace and Industrial Products Division of SPS Technologies, the largest manufacturer of aerospace fasteners in the U.S. He and his wife, Marie, live at 230 East Road, Doylestown, PA 18901.

**A. J. "Jim" Kiesler**, manager, metals processing branch, General Electric Company Research & Development Center, Schenectady, N.Y., has retired. His home address is 2068 Coolidge Place, Schenectady, NY 12309.

### 1942

**Sam Kurtz** recently became associated with a new company specializing in commercial real estate. He is an associate with Coker-Kroeger-Prater. He and Martha are home at 8597 Pendleton Drive, Roseville, CA 95678.

### 1943

**Roy L. Kackley Jr.** is now an assistant professor at Missouri Western State College in St. Joseph. He and Adeline have moved to 710 Greenbriar Terrace, St. Joseph, MO 64506.

**C.F.P. "Neil" Stueck** has been named chapter honor member of the UMR chapter of Chi Epsilon, national civil engineering honor fraternity. Neil is assistant vice president of Stupp Brothers Bridge and Iron Co. and resides at 73 Webster Woods Drive, Webster Groves, MO 63119.

### 1945

#### Reunion at Homecoming Class Coordinator:

**Vernon L. Kasten**  
1145 Shady Lane  
Jackson, MO 63755

### 1946

**Raymond B. Jones** is now manager, business development-color division of Ferro Corporation in Cleveland, Ohio. Ray and Roberta live at 26907 Lake Road, Bay Village, OH 44140.

### 1947

The Alumni office has received news of the death of **Robert Franklin Orton**.

**Norman O. and Marea Rankin** have moved to Star Route 2, Belle, MO 65013. Norman is retired and now farming.

### 1948

**John R. Barton** is branch chief-technology with McDonnell Douglas Corp. He and Geraldine live at 2201 Woodgrass Drive, Overland, MO 63114.

**Robert D. Davies** has joined Eagle Mine Products Inc. as a plant manager in Narrows, Va. He and Florence live at 911 Locust Drive, Pearisburg, VA 24134.

**Fred A. Todd** is principal engineer with C. F. Braun & Company of Alhambra, Calif. He and Marilyn live at 1912 Las Lanas Lane, Fullerton, CA 92633.

### 1949



**ROBERT D. BAY**

**Robert D. Bay** has been promoted to a management position at Black & Veatch, consulting engineers, headquarters in Kansas City. He began his new responsibilities as assistant engineering manager of the Civil-Environmental Division on March 10. Bay joined Black and Veatch in 1977 after 20 years with Laclede Steel. He is president elect of the MSM-UMR Alumni Association. He lives at 222 Magna Carta Drive, Creve Coeur, MO 63141.

News has been received of the death of **Robert B. Ellenson** of 6375 Buffie Court, Burke, VA 22015.

**Walter S. Knecht** has joined Union Carbide Corp. as senior system analyst, MIS. He and Shirley have moved to 5317 Westbrook Drive, Charleston, WV 25312.

## Alumni Personals

1950

Reunion at Homecoming  
Class Coordinators:

Edwin H. Barsachs  
3755 Northview Lane  
Dallas, TX 75229

Stanley Dolecki  
9113 Hatton Dr.  
St. Louis, MO 63126

Aaron J. Greenberg  
3285 Gustine  
St. Louis, MO 63116

**Robert N. Brown** has moved to 2 Lincolnshire Drive, Englishtown, NJ 07724. He is president and general manager of U.S. Metals Refining Company/AMAX Inc. in Carteret, New Jersey.

**R. J. George** has joined Mid-Mountain Contractors Inc. as general superintendent. He and Donna are now living at 1336 98th Ave., NE, Bellevue, WA 98004.

**Eugene J. Peetz** is a section chief-design for McDonnell Douglas Corp. in St. Louis. He and Anita live at 15612 Heathercroft Drive, Chesterfield, MO 63017.

**Harvey I. Phillips** is a chief program engineer with McDonnell Douglas Corp. in St. Louis. He and Barbara live at 1605 Horseshoe Ridge Road, Chesterfield, MO 63017.

**George R. Smith** is section chief-electronics at McDonnell Douglas. He and Carolyn live at 80 Pompano, Florissant, MO 63031.

**James C. Yeager** was named manager, geophysical division of Texaco Inc. Jim and Mary have a new address: P.O. Box 430, Bellaire, TX 77401.

1952

**Dan W. Martin** has been appointed vice president of Common Port Inc., in Houston, Texas. He and Shirley have moved to 4151 Southwest Freeway, No. 330, Houston, TX 77027.

1953

News has been received of the death of **Arthur R. Baumgardner** on December 12, 1979 in Cupertino, Calif.



1979 Rollamo

**Walker L. Flood** is now supervisor, turboshaft engine test with Detroit Diesel Allison in Indianapolis, Ind. Walker and Oma live at 8811 Ash Court, Clermont, IN 46234.

**Junior L. Mason** has been named director of results management with Monsanto Company in St. Louis. Junior and Betty live at 15369 Thistlebriar Court, Chesterfield, MO 63017.

**Albert and Martie Weber** have moved to 7302 N. Oleander Vista, Tucson, AZ 85704. Albert is manager, product assurance with Hughes Aircraft.

1954

**Searles T. Anderson** is now president of The Central Ozark Insurance Agency. He and Marleen live at 1200 Gertrude, Salem, MO 65560.

**Vernon D. and Jeannine Volker** send this note: "We sure did enjoy our trip to Rolla in October, 1979 to attend Homecoming. Also, I cherish my Silver Miner award. Keep up the good work." Vernon and Jeannine live at 1604 N. Lakewood, (Route 4, Box 31), Magnolia, AR 71753. Vernon is a reservoir engineer with Ethyl Corp.



1979 Rollamo

## Alumni Personals

### 1955

#### Reunion at Homecoming Class Coordinators:

**Arthur G. Baebler**  
20 Fox Meadows  
Sunset Hills, MO 63127

**James F. Hespen**  
92 Flamingo Drive  
St. Louis, MO 63123

**Ralph T. Davis, Jr.** is now director of simulation systems for Cubic Corp. in San Diego, Calif. Ralph and Pat live at 1116 Sea Village Drive, Cardiff By the Sea, CA 92007.

**Donald L. Kummer** has been made director-fusion energy, with McDonnell Douglas Astronautics Co. in St. Louis. He and Martha receive mail at Route 2, Box 260, St. Charles, MO 63301.

**David E. Nothstine** has been made branch chief-design for McDonnell Douglas Corp., St. Louis. He and Mae Jean live at 314 Oriole Drive, St. Charles, MO 63301.

**Gene Penzel**, vice president of Penzel Construction Company, was elected president of the Associated General Contractors of Missouri during that organization's 54th annual convention in St. Louis. His home address is 1110 Jackson Trail, Jackson, MO 63755.

### 1956

**Phillip O. Brown** is branch chief-electronic systems of McDonnell Aircraft in St. Louis. He and Virginia live at 13405 New Halls Ferry Road, Florissant, MO 63033.

**Val Gribble** is fiscal manager with McDonnell Douglas in St. Louis. He and Sally live at 2928 Concordia, St. Charles, MO 63301.

**Myles D. Stearman** has been named manager of operations of Ladd Petroleum Corporation in Tulsa, Okla. Myles and Shirley have moved to 7505 West Ironwood, Broken Arrow, OK 74012.

### 1957



**DR. ROBERT G. FULLER**

**Dr. Robert G. Fuller**, professor of physics, senior fellow of the centennial educational program and director of the ADAPT program at the University of Nebraska-Lincoln, has been elected president of the American Association of Physics Teachers (AAPT). Dr. Fuller's home address is 3443 W. Pershing Road, Lincoln, NE 68502.

**James R. Gender** has been named manager of research development for Hunter Engineering Co. His mailing address is 225 Peeke Ave., St. Louis, MO 63122.

**Ralph L. Herring** is section chief-technology for McDonnell Aircraft Company in St. Louis. He and Nola live at 3845 Fairway Drive, Florissant, MO 63033.

**Norman C. and Nung Johnson** have moved to 3100 South Manchester St., No. 726, Falls Church, VA 22044. Norman is a mechanical engineer with the U.S. Army Corps of Engineers in Washington, D.C.

**Russell E. and Shirley Williams** have a new address: Rt. 10, Box 421A, Burlington, NC 27215. Russ is a senior engineer with Western Electric.

### 1958

The Alumni Association was recently notified of the death, on Nov. 9, 1979, of **Bill J. Greer** of Valencia, Calif. At the time of his death, he was Western District drilling manager for Sun Oil Co.

**Donald R. McGovern** is branch chief design engineering for McDonnell Aircraft Company in St. Louis. He and Mary are home at 14 Talismanway Drive, Florissant, MO 63034.

**Richard A. Morgenstern** was killed in an automobile accident on Jan. 17, while traveling alone. He was a metallurgical engineer with Bethlehem Steel Corp., Buffalo, N.Y. Address for his wife, Mary, is P.O. Box 232, RD 2, Plank Road, Westfield, NY 14787.

**Kermit L. Wilkison** is branch chief-production engineer, with McDonnell Aircraft, Lambert Field, St. Louis.

### 1959

**S. Fred Isaacs** has been named the new vice president and general manager of Mapco's Pipeline Division. He has been with Mapco (Mid-America Pipeline System) since 1969. Home address is 4831 W. 85th, Tulsa, OK 74132.

**Charles E. and June Tackett** have moved to 451 Nazareth Drive, Nazareth, PA 18064. He is with Pennsylvania Power & Light Company.

## Alumni Personals

1960

### Reunion at Homecoming Class Coordinators

**Virgil J. Flanigan**  
201 Mech Engineering  
ME Dept., UMR  
Rolla, MO 65401

**Jerry L. Gilmore**  
Missouri Engineering Corp.  
211 S. Hwy. 63  
Rolla, MO 65401

**Kenneth T. Klebba**  
3418 Mile High Dr.  
Salt Lake City, UT 84117

**William A. and Joella Irene Anderson** have moved to 4214 N. Stanton Street, El Paso, TX 79902. Bill is director of engineering services with Providence Memorial Hospital in El Paso.

**George E. Stourton** is principal engineer with N.U.S. Corporation. He and Marian live at 414 Civil Drive, League City, TX 77573.

1961

**A. E. "Gene" and Sharon Glaser** live at 2111 Chapman Drive, Albany, GA 31707. Gene is plant manager for Delco Remy Division of General Motors.

**A. Wayne Johner** has joined General Motors Corp. in Bowling Green, Ky. as a project engineer. He and wife, Carole, have moved to 903 Meadowlark, Bowling Green, KY 42101.

**Thomas B. and Betty Lampe** have moved to 1307 Chapel Drive, Harrisonville, MO 64701. Tom is an engineer supervisor with Bendix Corp. in Kansas City.



1979 Rollamo

**C. R. Featherston** has joined Eaton Industries of Houston Inc., as vice president of drilling & production engineering. He and Alana are home at 5207 Havenwoods Drive, Houston, TX 77066. He was formerly manager of operations, Houston Oil and Minerals Corp., Eastern Division, and with Texaco, Inc., in southern Louisiana.

**David M. Lewis** has been promoted to chief engineer-project engineering division of the central engineering department of Conoco Inc. He has also been assigned as engineering and construction manager for a Linear Alkylbenzene Plant to be built at Conoco's Lake Charles, La. chemical complex. Dave and Lorraine live at No. 1 Donner Place, Ponca City, OK 74601.

**Dennis B. Redington** is now a general technical superintendent for Monsanto Company in Luling, La. Dennis and Judith have moved to 22 W. Levert, Luling, LA 70070.

**Robert K. Robertson** has joined RMF Steel Products as plant manager in Olathe, Kansas. He has moved to 2705 N. Walrond, Avondale, MO 64117.

**Arnaldo Salazar** is now technical manager of Lagoven in Venezuela. He and wife, Aida, receive mail at P.O. Box 172, Maracaibo, Venezuela. Their son, Arnaldo, is now a senior in chemical engineering at UMR and the Salazar's plan to be in Rolla for the May Commencement.

**Robert P. Zerwekh**, associate professor of mechanical engineering, will become associate dean of the School of Engineering at the University of Kansas in Lawrence on July 1. His home address is 3031 Topeka Lane, Lawrence, KS 66044.

1962

**Arthur H. Farnham** has been named president of Piping & Equipment Company Inc. of Wichita. He and Cindy are home at 5602 E. 19th, Wichita, KS 67208.

**Thomas J. Long** has joined Independent Refrigeration Manufacturing Inc., of Millstadt, Ill., as plant manager. He and his wife, Darlene, are home at 4622 Sienna Hills Place, St. Louis, MO 63128.

1963

**Ed Benn** has joined Chrysler Defense, Centerline, Mich., as manager, nuclear effects. He is making the XMI tank and learning management skills. Ed and Candice have two little girls and the family lives at 2900 Armstrong, Lake Orion, MI 48035.

**Kenneth E. Fryer** has been promoted to district construction engineer with the Missouri Highway and Transportation Department. Ken and Mary and family have moved to 810 Glenn, Sikeston, MO 63801.

## Alumni Personals

### 1963 Continued

**James L. Kohnen** has joined the U.S. Department of State (USAID) as capital project officer (foreign service) in Washington, D.C.

**Mahesh S. Patel** has been appointed director of research and development at Metallurgical Industries Inc. He is holder of several patents in the field of flame spray powder-hard facing. He has been selected for the "Who's Who in the East" Edition of 1979. Mahesh lives with his wife and two children at 16 Delwood Lane, Tinton Falls, NJ 07724.

**Gary W. Sander** has been promoted to president of Modern Farm Systems, Webster City, Iowa, a subsidiary of Blount Inc. He will be responsible for Blount's four MFS farm products manufacturing facilities in Iowa, Indiana, Nebraska and Mississippi and a distribution facility in Pennsylvania. His home address is 1711 Dundee Way, Louisville, KY 40205.

**Eugene Sehl, Jr.** is now marketing manager-Somers, for Olin Brass in Waterbury, Conn. Gene and Joan have moved to 60 Briar Hill, Avon, CT 06001.

**Lonnie J. Shalton** has moved to 1401 W. 50th, Kansas City, MO 64112. Lonnie is a lawyer for Polsinelli White & Schulte, Kansas City.

### 1964

**Richard M. and Mary Gibson Dodson** live at 2817 Bosworth Lane, Bowie, MD 20715. Richard is secretary of the General Staff, Headquarters, U.S. Army Electronics Research and Development Command at Adelphi, Md.

**Richard E. Raber** is a geometric engineer for the Illinois Division of Highways. He and Karen receive mail at P.O. Box 532, Effingham, IL 62401.

### 1965

#### Reunion at Homecoming Class Coordinators:

**James R. Cunningham**  
1489 Royal Spring  
St. Louis, MO 63122

**Daniel K. Goodman**  
9235 Hawthorne  
Munster, IN 46321

**Walter C. Mulyca**  
203 Hillcrest Terrace  
Marshall, TX 75670

**Robert L. Otto**  
4018 Briar Hollow  
San Antonio, TX 78247

**Charles H. Toedtman**  
4107 Gardenview Dr., No. 4  
St. Ann, MO 63074

**C. Martin Howard Jr.**, and Pat have a new address: Rt. 2, Box 404-J, W. Monroe, LA 71291. He is project engineer for Cities Service Company.

**Charles W. Riney** has joined Central Stone Company in Hannibal. Charles and Mary live at 10 Sunnyslope, Hannibal, MO 63401.

**Gary Brunner** was recently promoted to section head, antennas, in the research and development department of Goodyear Aerospace Corp. in Litchfield, Ariz. Gary and Suzanne are home at 5716 W. Poinsettia Drive, Glendale, AZ 85304.

**Roger A. Dorf** has been named director of operations of IBM Corp. in Boca Raton, Fla. He and wife, Sandy, have moved to 630 S.W. 18th St., Boca Raton, FL 33432.

**Floyd A. Gonzalez** has joined the firm of John D. Pope III, PC, as a patent attorney. He and Nancy live at 5802 Runnymede Court, Imperial, MO 63052.

**Gerald D. Goos** has joined Kustom Electronics in Shawnee Mission, Kan., as a project engineer. He and Rosemarie have moved to 16620 W. 143rd Terrace, Olathe, KS 66062.

**Gerald W. Bersett** has been named director of mill products manufacturing for Olin Brass Group, Olin Corp., in East Alton, Ill. His home address is 150 Kings Drive, Florissant, MO 63034.

Rollamo 1979





## Alumni Personals

### 1966

**William J. Karwoski** has joined Occidental Oil Shale as a mining engineer. Bill's new address is 2291 Shiprock Road, Grand Junction, CO 81503.

**Larry Rushing, PE**, was elected trustee at the Jefferson City Memorial Community Hospital annual Board of Governors meeting. His home address is 1809 Tower Drive, Jefferson City, MO 65101.

### 1967

Navy Lt. Cmdr. **Earl R. Batteen Jr.** recently visited Hong Kong. He is chief engineer of the guided missile cruiser USS Worden, operating from Yokosuka, Japan, as a unit of the U.S. 7th Fleet. Earl's permanent address is 4851 Grandy, Tampa, FL 33602.

**James W. Gorrell** is a project engineer for Brown & Root Inc., in Houston, Texas. He and Lida Marie live at 707 Salerno, Sugarland, TX 77478.

**George Tate** has been promoted to manager of markets in the reorganization of Honeywell's Flame Safeguard Center. In his new position, George supervises development of both original equipment manufacturer (OEM) and trade markets, as well as new markets. He and Kay and their two sons are home at 4817 Vandervork, Edina, MN 55436.

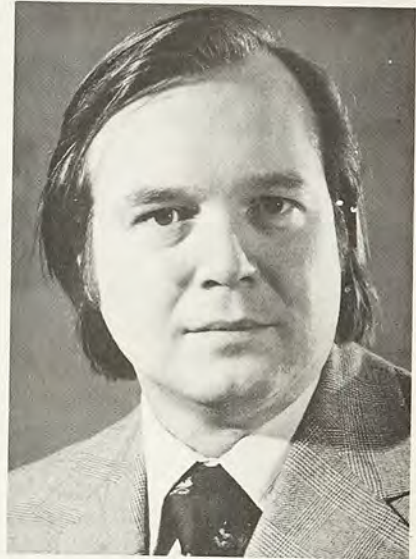
**Michael L. Wall and Judy** live at 15683 Century Lake, Chesterfield, MO 63017. Mike is superintendent of motive power for Missouri Pacific Railroad in St. Louis.

### 1968

**Jerry W. T. Brouwer** has joined the City of Mesa Electrical Department as an electrical systems engineer. He and Bunni have moved to 1247 N. Gaylord Circle, Mesa, AZ 85203.

**Robert L. Hilgendorf** has been made manager of shop operations for General Electric Company in Oberline, Ohio. Bob and Mary have moved to 14 Briar Court, Amherst, OH 44001.

**Stephen S. and Linda Kay Johnson** have moved to 1217 W. LaSalle, Springfield, MO 65807. Steve is an engineer for DeWitt and Associates in Springfield.



**BARRY Z. KREM**

**Barry Z. Krem** has been appointed assistant superintendent of the electric melt shop department at Leclde Steel Company's Alton, Ill., steel works. Barry, Ethel, and their daughter live at 14699 Lake Trails Court, Chesterfield, MO 63017.

**Michael J. Klosterman** is a geologist with the U. S. Army Corps of Engineers in St. Louis. He and Mary Ann live at 2055 Canterbury, Florissant, MO 63033.

**Robert F. McCrae** has joined G. & W. Electric Specialty Company in Blue Island, Ill., as director-international sales. He and Sally have moved to 15613 Vista Drive, Oak Forest, IL 60452.

**Thomas P. Nicholson** has joined Portland Chain Company, Portland, Ore., as general manager. Tom and Kay have moved to 11770 SW Katherine, Tigard, OR 97223.



1979 Rollamo

## Alum

### 1969

**Dana P. C.**  
Corp. as a  
dress is 14  
nati, OH

**Capt. Alan**  
with the U  
Medal at  
medal is a  
demonstra  
or merito  
mance of  
dress is 28  
CA 94533

**Roger S.**  
region of  
Engineers  
Cyndi live  
Aurora, C

**Gary M.**  
Veatch C  
mechanica  
9620 A Ly

**Donald J.**  
pointed to  
itects, Prof  
Surveyors.  
Wagner In  
dress is Ro  
MO 63080

**David M. E.**  
with Mons  
David and  
260 Pelhar  
ville, SC 29

**Robert H.**  
manager fo  
cinnati, Oh  
266 Saddle  
45140.

**John H. R.**  
and Gas Co  
duction sup  
1408 NW 9

## Alumni Personals

### 1969

**Dana P. Connolly** has joined Solarcrete Corp. as a civil engineer. Dana's new address is 10801-B Lake Thames, Cincinnati, OH 45242.

**Capt. Alan R. Cobb** has been decorated with the U. S. Air Force Commendation Medal at Travis Air Force Base. The medal is awarded those individuals who demonstrate outstanding achievement or meritorious service in the performance of their duties. Alan's home address is 2849 Calaveras Drive, Fairfield, CA 94533.

**Roger S. Dewey** is manager-western region of Skelly and Coy Consulting Engineers in Denver, Colo. He and Cyndi live at 12836 E. Ohio Ave., Aurora, CO 80012.

**Gary M. Gulick** has joined Black & Veatch Consulting Engineers as a mechanical engineer. His new address is 9620 A Lydia, Kansas City, MO 64131.

**Donald J. Kozeny, PE,** has been appointed to the Missouri Board for Architects, Professional Engineers and Land Surveyors. Don is partner is Kozeny-Wagner Inc., Arnold, Mo. His home address is Route 1, Box 133A, Sullivan, MO 63080.

**David M. Kummer** is a general engineer with Monsanto Company of St. Louis. David and Joanne have moved to 260 Pelham Road, Apt. G15, Greenville, SC 29615.

**Robert H. Orr Jr.** is now a project manager for Procter & Gamble in Cincinnati, Ohio. Bob and Mary Kay live at 266 Saddleback Drive, Loveland, OH 45140.

**John H. Rohm** has joined ARCO Oil and Gas Company as senior district production supervisor. His address is now 1408 NW 9th, Andrews, TX 79714.

**F. Clifton and Patty Steed's** new address is P.O. Box 8072, Dhahran, Saudi Arabia. Clifton is an engineer with Arabian-American Oil Company in Dhahran.

**Claude N. Strauser** has been presented with a "Bell Ringer" Award by the U. S. Army Engineer District, St. Louis, where he is employed as a research hydraulic engineer. The "Bell-Ringer" is presented to employees who, on their own time, present the Corps' message by way of speeches and special classes. Strauser receives mail at Rt. 1, Box 133A, Sullivan, MO 63080.

**Joseph W. Stahl** has joined the Institute for Defense Analyses in Arlington, Va., as a research staff member. Joe lives at 3700 Gunston Road, Alexandria, VA 22302.

### 1970

#### Reunion at Homecoming Class Coordinators:

**Dennis F. Jaggi**  
1933 Glenn Hill  
Carrollton, TX 75007

**Roger A. La Boube**  
2127 E. 151st Terrace  
Olathe, KS 66061

**Ranjit K. Roy**  
2253 Columbia  
Troy, MI 48084

**Terry A. Clinkingbeard** is assistant director, mobile utilities of the U. S. Navy, NAVNUPWRU in Port Hueneme, Calif. Terry and Dorothy are home at 1061B Guadalcanal, Port Hueneme, CA 93043.

News has been received of the death of **Ronald M. Creelius** on February 11.

**Bhagya Dhar Das**, 2211 Arborview Drive, Maryland Heights, MO 63043, has received a Master of Business Administration degree from St. Louis University.



**WILLIAM G. ALLEN**

**William G. Allen** has been appointed general sales manager (with responsibility for directing the division's sales operations for enzyme and brewing products) for Miles Laboratories Inc. He and his family live at 23096 Gardena Place, Elkhart, IN 46514.

**Theodore S. Balaban** has joined Litton Guidance & Control Systems in Woodland Hills, Calif., as a senior engineer. Ted's new address is 7947 Reseda Blvd., No. 44, Reseda, CA 91335.



1979 Rollamo  
MSM Alumnus/31

## Alumni Personals



1979 Rollamo

### 1970 Continued

**James C. Downey** has joined AMF/Potter & Brumfield, Princeton, Ind., as a production engineer. His new address is P.O. Box 86, Patoka, IN 47666.

**Joseph K. Hahn** has joined the energy department of First National Bank in St. Louis as a petroleum engineer officer. He and wife, JoAnn, have moved to 4740 Seibert, St. Louis, MO 63123.

**Jim Click** has been promoted to supervising equipment engineer for General Telephone Company in Bloomington, Ill. Jim, Linda and daughters, Sarah and Angela, live at 1203 Kim Drive, Bloomington, IL 61701.

**Robert G. Herbison** was recently promoted to manager—host systems support, at Farmland Industries' Kansas City data center. Bob and Barb live at 1907 New Orleans Ave., Lee's Summit, MO 64063.

**Mark L. Hockett** has been named senior project engineer, project engineering, budget & projects department, for Gulf Oil Corporation. Mark's home address is 3649 Boyd Ave., Groves, TX 77619.

**Larry J. Knapp** is a service engineer with Caterpillar. He and Janis receive mail at RR 3, Box 96, Eureka, IL 61530.

**Thomas W. Manning** has joined Hellmuth, Obata & Kassabaum, Inc. as a civil engineer. Tom's home address is 11131 Saucier Drive, Creve Coeur, MO 63141.

**James R. Pierce** is now a project engineer with National Engineers and Associates, a unit of National Steel Corp., located at 7777 Bonhomme, Suite 1008, St. Louis, MO 63105. The unit's main involvement is pollution control in the iron and steel industry including coke pushing emission control, stack gas emission control, blast furnace cast house emission control, fugitive emission control, and waste water treatment. Jim's home address is 3395 Rockingham, Florissant, MO 63033.

**Charles T. Ray** has accepted the position of chief design engineer-process computers in the alloys technology department of Union Carbide, Metals Division, Niagra Falls, N.Y. His temporary address is 111 S. Market St., No. 4, Jefferson, OH 44047. He will be moving to Niagra Falls, N.Y. in May.

**David W. Rommelmann** has been promoted to office manager of Granger Engineering's Gaylord office. Dave and Patricia live at 10667 Pinegrove, Cadillac, MI 49601.

### 1971

**John H. Atkinson III** is a chief-training developments, in the U.S. Army. He and Mary Lou are presently residing at 22 Kirby St., Fort Leonard Wood, MO 65473.

**T. James Barker, Jr.** has been promoted to staff distribution engineer and transferred to the Springfield, Ill. office of Central Illinois Public Service. He and Mary now live at 1113 Paddock Lane, Springfield, IL 62707

**Daniel M. Call** has joined McDonnell Douglas Astronautics as engineer-contract services. Dan and Marcia have moved to 2085 David Drive, Florissant, MO 63031.

**Hal E. Carter** has joined Occidental Petroleum as mine maintenance superintendent. He and Karen live at 2419 Pheasant Run Circle, Grand Junction, CO 81501.

**John G. Daniel** has joined Nalco Chemical Company as a senior ceramic engineer in Chicago, Ill. John and Margaret live at 3308 S. 57th Court, Cicero, IL 60650.

**Prafulla C. Mahata** has joined Arthur D. Little Inc., of Cambridge, Mass., as a senior staff associate. Prafulla and Aparajita have moved to 6 Bright St., No. 15, Waltham, MA 02154.

**J. Dale Montgomery, Jr.** has joined The American Public Works Association as staff engineer and executive secretary, Institute for Solid Wastes. Dale's new address is 5216 N. Magnolia, Chicago, IL 60640.

**James F. Raithel** has been made a senior project engineer for Texaco, Inc. He and Brenda live at 3142 Matterhorn Drive, Port Neches, TX 77651.

**Gale Roberts** has joined Missouri Department of Natural Resources in Springfield as an environmental engineer I. Gale and Jeanne's address is RR No. 3, Box 146, Bolivar, MO 65613.

Navy Lt. **Lindell G. Rutherford** has returned from a nine-month deployment in the Western Pacific and Indian Ocean. He is the legal officer of Fighter Squadron 111 (VF-111) based at the Miramar Naval Air Station, San Diego. Lindell and Marsha's home address is 13108 Trail Dust Ave., San Diego, CA 92129.

## Alumni Personals

### 1972

**William P. and Barbara Balaz** have moved to 3273 S. Forest St., Denver, CO 80222. Bill is a mine engineer with John T. Boyd Company.

**Paul L. Bible, Jr.** has been made manager, industrial control of GTE/Sylvania in Atlanta, Ga. Paul and Janis have moved to 2697-H, Delk Road, Marietta, GA 30067.

**Stephen J. Boyd** is corporate secretary for Boyd Brothers Inc. of Sesser, Ill. The Boyd's, Steve, Carolyn, Angie, Tammy and Stevie, invite all to come and see them down on the farm near Sesser. Their address is No. 1 Carolyn's Lane, Sesser, IL 62884.

**Randolph F. Christen's** new address is 8 Amblewood Way, State College, PA 16801. He is currently a student at Penn. State University.

**Douglas G. Gundy** is now a project petroleum engineer with Tenneco Oil Company in Houston, Texas. He and Ellen live at 17606 Sorrel Ridge, Spring, TX 77373.

**George W. Hauenstein** has joined Emerson Electric as an engineering specialist. George and Donna are home at 1187 Boardwalk, Florissant, MO 63031.

**Michael A. North** has joined Booker Associates Inc., St. Louis, as a project engineer in the civil engineering department. Mike's home address is 130 Pompano Lane, Florissant, MO 63031.

**Stephen W. Rector** has been named division reservoir engineer for Shell Oil Company in Houston. Steve and Susan have moved to 5311 Brownlee Lane, Spring, TX 77373.

**Ralph D. Tate** has formed Tate Consultants providing civil engineering and planning consulting services. Ralph and Linda will receive mail at his business address: 2619 N. Clayton, Springfield, MO 65803.

### 1973

**John F. Arseneau** has joined G. H. Minerals as a senior geologist. He and Elise receive mail at P.O. Box 634, Battle Mtn., NV 89820.

**Bernard A. Bruns**, 1719 Tralee Lane, Manchester, MO 63011, has received a Master of Business Administration degree from St. Louis University.

**Bruce and Rosemary Gastineau** have moved to 1755 Farleigh Court, Fort Worth, TX 76140.

**Dean R. LaBoube** has joined Milchem Inc. of 2305 E. Arapahoe Road, Suite 123, Littleton, CO 80122.

**Lyle F. Janes** has been made technical support specialist with Dow Corning Corp. Lyle and Susan have moved to 2 Norwich Court, Midland, MI 48640.

**David A. Knoll** has joined Shell Oil Company as a civil engineer. Dave's new address is 10212 Plainfield Drive, Apt. 302, New Orleans, LA 70127.

**John G. Ladner** has become pastor of the Parkland First Baptist Church in Tacoma, Wash. John and Sue Lynne have moved to 1413 Violet Meadow, Tacoma, WA 98444.

**Arthur A. Hartle Jr.**, has joined the Missouri Department of Natural Resources, Construction Grants Program as a project engineer. He and Cathy have moved to 2910 Kenborg Hill, Jefferson City, MO 65101.

**Alan R. Mauzy** has joined Merrick & Company as a project manager. He and Peggy now live at 5263 S. Richfield St., Aurora, CO 80015.

**Charlie L. McBride** has joined American Cyanamid as a process engineer. He and Gail have moved to 4445 Yarmouth Place, Pensacola, FL 32504.

**Darryl Moore** has joined Cities Service Company as a manager-energy conservation. He and Dottie have moved to 7335 S. Utica, No. 1102, Tulsa, OK 74136.

1979 Rollamo



## Alumni Personals



### 1973 Continued

**Ronald L. Shady** is now engineering group manager for Fourdee Division of Emerson Electric. He and Barbara have moved to 668 San Pablo Ave., Casselberry, FL 32707.

**Harry J. Walker** is a captain in the U. S. Air Force stationed at MacDill Air Force Base. He and Patricia have moved to 3125 Sandspur, Tampa, FL 33618.

### 1974

**Dave Barezewski** is now training and organizational development manager with Procter and Gamble. His address is 2701 Tanglewood Drive, Cape Girardeau, MO 63701.

**John S. and Patricia Ham** have moved to 301 Brownlie Lane, Long Grove, IA 52756. John is a materials and standards engineer with Caterpillar Tractor Company in Davenport.

**Gerry Howser** has joined Missouri Power & Light Company as a computer programmer/analyst. Gerry and Karen announce the birth of their third son, Daniel, born October 5, 1979. The Howser's live at 424 Union, Jefferson City, MO 65101.

**Michael J. and Cindy Kessler** moved out of their condominium and into a new home in November. Their new address is 6841 Chilham Drive, Florissant, MO 63033. They are expecting their second child in March. Mike is a staff engineer for Amoco Oil Company in Woodriver, Ill.

**Donald H. Lange** has joined Nooter Corporation as a sales engineer. His new address is 8154 Twin Bridges Trail, No. 302, St. Louis, MO 63123.

**Billy G. Olsen** has joined the National Weather Service-River Forecast Center in Kansas City, as hydrologist. He and Patricia have moved to 500 SW Windmill Lane, Lee's Summit, MO 64063.

**Ray L. Purvis** has joined the Missouri Highway and Transportation Department as a district highway design engineer. He and Donna have moved to 305 E. Westminster, Blue Springs, MO 64015.

**Randal Earle Staponski** was married to Denise Marie Beckemeyer on December 1, 1979. They are home now at 5658 S. Peoria, Apt. 104, Tulsa, OK 74105.

### 1975

#### Reunion at Homecoming Class Coordinators:

**Garry R. Aronberg**  
8671 Barby Lane  
St. Louis, MO 63124

**Arthur H. Bell**  
794 Picket Way  
Cincinnati, OH 45245

**Myron D. Calkins, PE**, was presented the Edmund Friedman Professional Recognition Award by the American Society of Civil Engineers for "his exemplary professional accomplishments in his service to the public...and for his professional competence and leadership in his career and in his community." His home address is 5003 NW 67th Street, Kansas City, MO 64151.

**David E. Cobb** recently accepted a position with Associated Electric Cooperative Inc. in Springfield, Mo. as staff civil engineer. His home address is 1438 S. Gelven, Springfield, MO 65804.

**George M. Dolson** has joined the University of Texas Medical Center in Houston. Dr. Dolson's new address is 2600 Westridge, No. 107, Houston, TX 77054.

**Kaye Grau** was awarded the Doctor of Philosophy in Computer Science degree from UMR on December 19, 1979. She is the second woman to receive such a degree from UMR. Her address is 2768 Pennsylvania Ave., Oviedo, FL 32765.

**John M. Kaufman** and wife, Nancy, announce the arrival of a daughter, Jennifer Anne, on Oct. 2, 1979, in Denver. The Kaufman's are home at 3052 South Fairplay, Aurora, CO 80014.

**William P. Lorenz** has joined Anamax Mining Co. as oxide plant superintendent. Bill and Karen receive mail at S. T. R. Box 484-C, Sahuarita, AZ 85629.



## Alumni Personals

### 1975 Continued

**Craig S. and Christine Korkoian** now have a matching pair—of twins that is! Cathleen and Caryn arrived on February 24, 1980. Craig is currently a general foreman at Inland Steel Company. The Korkoians are home at 1706 Novo Drive, Schererville, IN 46375.

Navy Lt. j. g. **James H. Martin** has returned from a nine-month deployment in the Western Pacific and Indian Ocean. Jim is an officer assigned to Attack Squadron 52 (VA-52) based at the Whidbey Island Naval Air Station, Oak Harbor, Wash. While deployed, his squadron was embarked aboard the aircraft carrier USS Kitty Hawk. His home address is 8427, 850 Avenue W, Oak Harbor, WA 98277.

**Warren C. and Christine Omohundro** have moved to 22314 Meridian Ave., Bothell, WA 98011. He is a computer programmer with Software AG of North America Inc., in Lynnwood, Washington.

**Bernard H. Scheer III** has joined Allis-Chalmers/Stephens-Adamson as account representative. His address is 4312 Martyr Ridge, St. Louis, MO 63129.

**Steven H. Stearns** has joined the Tennessee Valley Authority as a mechanical engineer. He and Carol Anne have moved to 518 Guille St., Athens, TN 37303.

1979 Rollamo



**Paul S. Monti** has joined Martin Marietta Aerospace as mechanical engineer. Paul and Ellen have moved to 7792 West Ottawa Place, Littleton, CO 80123.

**Thomas J. Reed** is project engineer for Kozeny-Wagner in Arnold, Mo. Tom and Sheryl have moved to 979 Tree Trails Lane, Fenton, MO 63026.

**Stephen D. Schaffner** has moved to 2585 Sorrell Drive, Florissant, MO 63033. He is communications engineer with Shell Pipe Line Corp. in Roxana, Ill.

**Stephen M. Stubbs** has joined McDonnell Douglas Automation Company in Berkeley, Mo. as a consultant (K250/73/2/AN). Steve and Alisa (Hudson) receive mail at P.O. Box 23, Hazelwood, MO 63042.

### 1976

**Randal A. Atkeisson** has joined Sperry Flight Systems as project engineer. He and Elizabeth are now home at 1917 West Kerry Lane, Phoenix, AZ 85027.

**Stephen A. Brothers** was recently promoted to the position of mechanical engineer with Illinois Power Company. His new address is 2828 Jamar Trail, Apt. 317, Decatur, IL 62521.

**Denise Koehr Coursen** is a member of the administrative group at Belle Laboratories in Piscataway, New Jersey. Denise and her husband, Samuel, live at 8 Heather Hill, Bridgewater, NJ 08807.

**Alan D. Granger** is a production geologist for Everest Minerals Corp., Corpus Christi, Texas. Alan and Lynne live at 1907 Oak Ridge Drive, Portland, TX 78374.

**Jerold L. Lewis** has joined Centrilit Inc. as a reliability engineer. He receives mail at Box 881, Rangely, CO 81648.



J. C. GRIESE

Upon completion of his active duty obligation in the U. S. Army, **J. C. Griese** accepted employment with the Michelin Tire Corporation. Jim's address is 1-A The Shoals, Route 11, Anderson, SC 29621.

**Duane L. Parrish** has joined Killark Electric Manufacturing Company as an industrial engineer. He and Susan have moved to 420 Lambeth Lane, St. Louis, MO 63125.

**Jon Trusik** has moved to 1223 Ferro Ave., Bessemer, AL 35020. Jon is resident electrical engineer for Jim Walter Resources Inc.

### 1977

**Alan Benson** has accepted a position as an exploration geologist with Kaiser-Francis Oil Company in Tulsa, Okla. He's receiving mail at the office address: P.O. Box 35528, Tulsa, OK 74135.

**Mr. and Mrs. Larry Brewer**, 352 Harrell Drive, Lafayette, LA 70502, are parents of a baby girl. Valerie Sue was born January 8, and weighed in at 7 lbs., 12 oz. Larry is an associate petroleum engineer with Marathon Oil Company.

**Robert Alan Fricke** has joined Schlumberger & Sureco as senior field engineer in Bogata, Columbia. Bob's home address is 10925 Campbell St., Kansas City, MO 64131.

## Alumni Personals

### 1977 Continued

**Bob and Sally Gaebler** have bought a house at 18 Rolla Gardens, Rolla, MO 65401. Bob is currently a doctoral candidate in computer science and Sally is working full time at the UMR computer center.

**William R. Gibbs, PE**, toured China during 1979, with a delegation of engineers in an effort to establish an exchange program with that country. Gibbs, a partner in Black & Veatch, lives at 4300 W. 98th, Overland Park, KS 66207.

**James A. Godar** married Tanina Lombardo on September 15, 1979. They are both engineers for Westinghouse Electric-Defense Division in Baltimore, Md. Their new address is 516 Retford Dr., Severna Park, MD 21146 (phone: 301-544-3392).

**Lawrence C. Jackson** has joined the engineering staff of Vistron Corporation, Lima Chemicals Manufacturing, Lima, Ohio. Larry's new home address is 1216 Knollwood Drive, Lima, OH 45801.

**Samuel Kim** has joined the U.S. Army Rocky Mountain Arsenal as safety engineer and acting safety director. His new address is 9-311, 630 South Dayton, Denver, CO 80231.

**Ellen M. Monti** has joined Martin Marietta Data Systems as a computer systems designer. Ellen and Paul have moved to 7792 West Ottawa Place, Littleton, Co 80123.

**Kathy Mullins, '77, and James Wright, '78**, were married in St. Louis on September 15, 1979. Kathy is supervisor, production with DuPont in Edgemoor, Del., and Jim is a salesman with Ingersoll-Rand, Montgomeryville, Pa. They are home at 220 Bynum Place, Bear, DE 19701.

**David W. Lee** is U. S. Army Captain now with the Portland District Corps of Engineers as an engineer on the Bonneville 2nd Power House Project. He and Charlene have moved to 10703 NE 44th Street, Vancouver, WA 98662.

**David L. Thorn** has joined Eagle Picher Industries as a chief industrial engineer. He and **Dallas (Kirk), '79**, have moved to 3902 Collegeview Drive No. 15B, Joplin, MO 64801.

**Donald L. Van Houten** is a project engineer with McCarthy Bros. Construction Company in St. Louis. He and Norma have moved to 7725-D East Ridge Circle, Birmingham, AL 35210.

**John H. Northup III** has joined Norwich-Eaton Pharmaceuticals as process engineer. John's new address is RD No. 1, Chenango Lake, Norwich, NY 13815.

**David L. Perry** is enrolled at the University of Arizona and is a teaching assistant. His home address is 5555 E. 14th, No. 542, Tucson, AZ 85111.

**John V. Stutsman** was married to Kathy Ann Trachsel Nov. 17, 1979. John has just been promoted to generation planning engineer at Northern Indiana Public Service Co., Hammond, Ind. He was previously an electrical engineer in their microwave communications group. Kathy is a '77 graduate of Purdue University and is a pharmacist at Community Hospital in Munster, Ind. John and Kathy live at 9506 Hampton Drive, Apt. 20, Highland, IN 46322.

**Faramarz Vazinpour** has moved to 18411 Hatteras, No. 19, Tarzana, CA 91356.

**Paul R. and Linda Vetter** have moved to 8729 Tilman Drive, Oklahoma City, OK 73132. Paul is customer service staff supervisor-building engineer for Southwestern Bell in Oklahoma City.

**Bradley J. Wyatt** is now an evaluations engineer with Texas Eastman Company in Longview, Texas. Brad and Pamela have moved to 1809 Northwood Court East, Longview, TX 75605.

### 1978

**Kevin B. Adkison** has joined J. S. Redpath Corp., Tempe, Ariz., as a project engineer. Kevin's current address is 1007 West 3rd, Salem, MO 65560.

**Marilyn R. Brotherton** was married to Mark Slack on August 11, 1979. Marilyn is employed with Southwestern Bell. Their new address is 3257 W. Northgate, No. 1339, Irving, TX 75062.



## Alumni Personals

### 1978 Continued

**Jerry and Sandy Buchheit** have moved to 2300 W. Broadway, Columbia, MO 65201. Jerry is an industrial engineer with the Square D Co.

**Jackie DeThorne** has accepted the position of proposal engineer with TLT-Babcock in Akron, Ohio. Her new address will be 247 Buffington Road, Akron, OH 44313. On May 31, Jackie will marry Joe Falconi in Ottawa, Ill. Both Jackie and Joe are attending the University of Akron. Jackie is working on her M.B.A. degree and Joe on a J.D. degree (he is currently manager of an electroplating shop).

**David K. Fonner** has joined Union Electric Co. as an assistant engineer. Dave and Brenda have moved to Apt. E, 1170 Grand Terrace Drive, Fenton, MO 63026.

**Peter A. Goldberg** is project engineer for BASF Wyandotte Corp. in Wyandotte, Mich. His home address is 16500 Quarry Road, Apt. 403, Southgate, MI 48195.

**Michael K. Hauser** is a petroleum engineer with Chevron U.S.A. Inc., in Bakersfield, Calif. He and Paula have moved to 309 F St., Taft, CA 93268.

**Steven R. Maxwell** is now with Sperry Microwave as an electrical engineer. Steve and Teri have moved to 1672 S. Betty Lane, Clearwater, FL 33516.

**Mark A. Petry** is a mining engineer with Carter Mining Company in Gillette, Wyo. He and Bridget have moved to 900 Stanley Ave., Gillette, WY 82716.

**Michael L. Pratt** accepted a position as business programmer analyst with McDonnell Douglas Automation, Division of Health Services on December 1. He and his wife, Debbie, have moved to 3012 Mayer Drive, St. Charles, MO 63301. Debbie is now a computer operator with Emerson Electric.

**Teri A. Payne** is now Mrs. Robert Nunnally. The couple lives at 1610 New Hampshire, Joplin, MO 64801.

**James T. and Kathleen Rau** have moved to 8711 Town Park, No. 2169, Houston, TX 77036. Jim is an associate engineer with Continental Pipe Line Company.

**Mark Roenfeldt** recently joined CTL/Thompson, Consulting Engineers, as a project engineer. Mark lives at 759 S. Reed Court, Apt. A25, Lakewood, CO 80226.

**John N. Stolwyk** is assistant to the superintendent of Freeman United Coal Company in Waltonville, Ill. His home address is 472 Pasadena, Webster Groves, MO 63119.

**Hsien-Lung Tsai** is a graduate student at the University of Tennessee, department of chemistry, metallurgy and poly. engineering. He and Chang-I Bonnie Chen have moved to 1611 Laurel Ave., Apt. No. 1202, Knoxville, TN 37916.

**Donald R. Walker** has joined the staff of the Curtis Laws Wilson Library as a library assistant at UMR. He and Rebecca receive mail at Route 2, Box 487, Rolla, MO 65401.

**James H. Wills** was awarded the designation of "Outstanding Young Professional Engineer in the State of Colorado" for 1979, at the state convention of Professional Engineers of Colorado (NSPE). Jim is a division engineer with Phillips Pipe Line. His new address is 1008 Russell, LaJunta, CO 81050.

**Robert E. Boon** is now a teaching assistant, department of English, University of Missouri-Columbia. His new address is 3715B Hyde Park, Columbia, MO 65201.

**Mary B. Coffman** has joined Illinois Central Gulf Railroad as a programmer. She and Terry, '76, live on Jewell Lane, Route 6, Box 458, Paducah, KY 42001.



1979 Rollamo

**Henry W. Elceser** has joined A. E. Staley Manufacturing Company as a development engineer. His new address is 1450 Wellington Way, Apt. 1D, Decatur, IL 62526.

**Michael J. Gregory** has joined Dravo Corporation as field engineer (CMMD). He has moved to 25 Oakville Drive, Apt. TA, Pittsburgh, PA 15220.

**Gary S. Miloradovich** is an engineer with Dow Chemical U.S.A. He and Brenda live on Route 1, Box 34-C, Freeport, TX 77541.

**Ernest P. Ward Jr.**, has been named network supervisor—OSP assignment with Southwestern Bell Telephone in Creve Coeur. He and Toni have moved to 1420 Mautenne, Manchester, MO 63011.

**Richard A. Windhausen** has moved to 1025 Roxwood Lane, Boulder, CO 80303. He is a member of the technical staff of Bell Laboratories in Denver.



## Alumni Personals



1979 Rollamo

### 1979

**William C. Bagley** is an electrical engineer, software, with Murphy Cardinal Electronics. Bill's new address is 102½ S. Main, Apt. 7, Webb City, MO 64870.

**Charles R. Bagnell** is a design engineer with Campbell Soup Company in Omaha, Nebr. He and Valarie have moved to 1403 Buck Drive, Apt. 102, Bellevue, NE 68005.

**Frederick C. Bauhof** is geological engineer with Golder Associates in Atlanta, Ga. He and Susan live at 821-C Tahoe Run, Roswell, GA 30075.

**David C. Belden** is an independent oil producer, W. L. Belden Trust. He and Sherri receive mail at P.O. Box 158, St. Elmo, IL 62458.

**Martha A. Bennett** has joined Industrial Risk Insurers as assistant engineer. Her new address is 1040 Starshire, St. Louis, MO 63138.

**Michael J. Biffignani** is a special products engineer with MCI Inc. (recording studio equipment manufacturer). He and Cathy have moved to 2700 NE 51st St., No. 310, Ft. Lauderdale, FL 33308.

38/MSM Alumnus

**Philip R. Bissey** has joined Caterpillar Tractor Company as sales representative. His new address is 4010 N. War Memorial, Apt. 101, Peoria, IL 61614.

**Terry L. Blattel** has joined Burns & McDonnell as a civil engineer. His new address is 8700 Buckingham Lane, Apt. 11, Kansas City, MO 64138.

**Rhonda L. Boles** is a process engineer with Monsanto—at the W. G. Krummrich Plant in Sauget, Ill. She and Michael have moved to Apt. 203, 14337 Summerfield, Florissant, MO 63033.

**Thomas F. Brandlein** is an engineer with Roberts & Schafer of Drakesboro, Ky. He and Shirl have a new address, Star Route, Dunmor, KY 42339.

**Kathleen C. Bryan** is an assistant chemical engineer with General Foods Corp. in Kankakee, Ill. Her new address is 439 Grand Drive, Bourbonnais, IL 60714.

**Kenneth J. Doerr** has joined Sperry Flight Systems as a design engineer. His new address is Creekside Village, 13850 N. 19th Avenue, Apt. 80, Phoenix, AZ 85203.

**Dennis T. Dressel** has joined Shell Oil Company as a project engineer in Wood River, Ill. He has moved to 1796 Santa Delora Walk, St. Louis, MO 63138.

**Paul H. Fitzgerald** is an associate engineer with McDonnell Douglas Astronautics Company in St. Louis. He and Robin live at 294-C Bolton Drive, Ballwin, MO 63011.

**Michael L. Fletcher** has joined Panhandle Eastern Pipeline Company as an assistant engineer. His new address is 10613 E. 42nd Street, Apt. G, Kansas City, MO 64133.

**James J. Folkl** is an aerospace engineer with Army Aviation Research. He and Susan live at 6211 Murdoch, St. Louis, MO 63109.

**Ho-Ming Fu** is a structural engineer with Sverdrup & Parcel and Associates Inc. He and Connie are home at 8153 Flintstone Trail, St. Louis, MO 63123.

**Robert Giovando** has joined Old Ben Coal Company as a project engineer. His new address is 1421 N. Franklin, Apt. 3, Benton, IL 62812.

**Stephen E. Goldammer** is now a graphics art engineer with Litton Industry. His new address is 925 South Ave., 202B, Springfield, MO 65806.

**William G. Harding** is now a civil engineer II with the Arkansas State Highway & Transportation Department. He and Penny have moved to 9104 Long Acre Drive, Little Rock, AR 72205.

**Reid P. Herzog** is an electrical engineer with Oklahoma Gas & Electric. He and Pam have moved to No. 18 Robby Road, Shawnee, OK 74801.

**Kenneth R. Klamert** has joined Stone & Webster Engineering Corp. as field engineer. His new address is 7078 Van Gogh No. 53, Baton Rouge, LA 70806.

**Jeffery S. Lewis** is a FHWA trainee with the Federal Highway Administration in Helena, Mont. His new address is 617 McLeod, Box 987, Big Timber, MT 59011.

**Than V. Loc** has joined the U. S. Geological Survey in Metairie, La. as a petroleum engineer.

**Lois M. Luehrman** has moved to 2905 Lake Villa Drive No. 4, Metairie, LA 70002. She is an engineer with Shell Oil Company in New Orleans.

**Michael D. Rhew** has joined Martin Marietta Aerospace as an associate engineer. Mike and Marilyn have moved to 28173 Tresine Drive, Evergreen, CO 80439.

## Alu

### 1979

**Terry F.**  
to the  
'79. The  
Jefferso  
ment tr  
St. Lot  
Houston  
Mining  
Compar  
Pagewo  
77063. I  
Apt. F,

**Bruce A.**  
Gate Co  
new ad  
Apt. 102

**Katherin**  
Monsant  
home at  
sant, MC

**Hassen E.**  
per Com  
as a civil

**Wolfgang**  
Service-  
His new  
Apt. D, M

**Keith E.**  
Scott, Ap

**Mark A.**  
Associate  
engineer  
ment. He  
113, Aug

**Ronald E.**  
struments  
He and Isl  
Drive, Be  
75056.

**John R. L.**  
tal engine  
ment of N  
City, Mo.  
2107 Blair  
65101.

## Alumni Personals

### 1979 Continued

**Terry Panhorst** has "finally succumbed to the arm-twisting" of **Phyllis Lanza**, '79. Their wedding is set for October in Jefferson City, Mo. Phyllis is a management trainee with Southwestern Bell in St. Louis, and Terry is hiding in Houston, Texas as a geologist with the Mining Ventures Group of Shell Oil Company. Present address is 9221 Pagewood, Apt. 194, Houston, TX 77063. Her address is 4239 Kopwood, Apt. F, St. Louis, MO 63129.

**Bruce A. Schuld** has joined Golden Gate Corp. as a mining engineer. His new address is 7440 Holbrook Lane, Apt. 102, Boise, ID 83704.

**Katherine A. Stamer** is an analyst with Monsanto Company in St. Louis. She is home at 2007 Woodridge Lane, Florissant, MO 63033.

**Hassen Beshir** has joined Magma Copper Company in San Manuel, Arizona as a civil engineer.

**Wolfgang Campbell** has joined Public Service-Indiana as a nuclear engineer. His new address is 851 Lanier Drive, Apt. D, Madison, IN 47250.

**Keith E. Chrisman** has moved to 1575 Scott, Apt. 9, San Diego, CA 92106.

**Mark A. Ditch** has joined Booker Associates Inc., St. Louis, as a design engineer in the civil engineering department. He receives mail at Route 1, Box 113, Augusta, MO 63332.

**Ronald E. Lile** has joined Texas Instruments as design engineer in Dallas. He and Isla Fern now live at 5169 Pruitt Drive, Box 93605, The Colony, TX 75056.

**John R. Lodderhose** is an environmental engineer with the Missouri Department of Natural Resources in Jefferson City, Mo. John's new home address is 2107 Blair, Apt. J, Jefferson City, MO 65101.

**Michael R. McPherson** has joined Motorola Inc., as an electrical engineer in Tempe, Ariz. Mike and Audra Ann have moved to Apt. 202, 1820 West Lindner, Mesa, AZ 85202.

**Michael D. Pollard** has joined the staff of Martin Marietta in Denver, Colorado as an associate engineer. Mike and Becky have moved to 185 S. Zang Way, 7-205, Lakewood, CO 80228.

**Michael Richey** is a graduate assistant at UMR. His current address is Box 296, RHA, Rolla, MO 65401.

**Randal J. Schmitt** has joined Western Electric Company as an electrical engineer. His new address is 1327 W. 84th Ave., Apt. No. 527, Denver, CO 80221.

**Michael (Mick) Schneider** has moved to 1100 County Line Road, Bldg. G, Apt. 20, Kansas City, KS 66103. Mick is a project engineer with the Marley Company in Mission, Kansas.

**Stephen W. Simmons** is now an engineer with Union Carbide of Oakridge, Tenn. His address is 300 Walker Springs Road, Apt. 6-E, Knoxville, TN 37919.

**Timothy John Snyder** was married to **A. Kathryn Fox** January 12, 1980. Tim and Kate are both working on degrees in ceramic engineering at UMR.

**John R. Swinson** has joined Chevron as drilling representative. His home address is 100 McDonald, Apt. 13-H, Lafayette, LA 70506.

**William S. Talley, Jr.** is now on the staff of the Mark Twain Forest as a civil engineer. His address is 1208 Oak, Apt. No. 1, Rolla, MO 65401.

**Dianna Tickner** has joined Reynolds Metals Co. in Bauxite, Ark., as a mining engineer. Dianna's address is 1912 Green Mountain Drive No. 407, Little Rock, AR 72122.

**Robert B. Work** is an environmental engineer with the Missouri Department of Natural Resources in St. Louis, Mo. Bob and Joan Marie are home at 225 Charmers Court, Kirkwood, MO 63122.

1979 Rollamo



## Alumni Personals

### Letters To The Editor

Dear Frank,

The last edition of the MSM arrived the day after I had put into an album some snapshots of Rolla days. The picture (enclosed) caught my eye. I'm enclosing one taken in June, 1928. From left to right: Bemis Followill, '31, Robert C. Ledford, and Boehne. Ledford succumbed to a heart attack this past December 23, Yale, OK. Bob dropped out of school after his second year, but made a name for himself as a construction engineer in Houston, Texas prior to retirement several years ago. He was an authority on the design and construction of submarine pipelines.

He is survived by his wife, Ona Mae, 327 N. B St., Yale, OK 74085, and a sister, Mrs. Dresbach (wife of MSM graduate.)

How is the Phoenix group getting along without a frugal treasurer?

Check is enclosed for the 1980 Century Club.

Cordially,  
(signed)

Jack Conley, 1931  
2411 E. 55th Pl., Apt. 63  
Tulsa, OK 74105



Followill, Ledford and Boehne



From February Alumnus  
40/MSM Alumnus

## Meeting Data

EVENT/SITE	DATE
CLASS OF 1930 REUNION	May 17-18, 1980
Rolla	
COMMENCEMENT	May 18, 1980
Rolla	
SPE OF THE AIME	SEPTEMBER 21-24, 1980
Dallas Convention Center	
DALLAS AREA AND SPE ALUMNI	September 23, 1980
Dallas	
PARENTS' ASSN. ANNUAL MEETING	October 10, 1980
Rolla	
BOARD MEETING	October 17, 1980
Rolla	
HOMECOMING 1980	October 17-18
Rolla	
MSM-UMR ALUMNI ASSOCIATION ANNUAL MEETING	October 18, 1980
Rolla	
AIME	October 22-24, 1980
Minneapolis	
ROCKY MOUNTAIN LUNCH	First Tuesday
Denver Petroleum Club	

ATTENTION: Please notify Alumni Office of your meeting arrangements.

# MSM-UMR Alumni Association Committees

Alumni Alliance.....	Art Baebler
Alumni-Student-Faculty Conference.....	Bill Flood
Annual Fund.....	Bob Bay
Athletic Studies.....	Joel Loveridge
Awards.....	Hans Schmoltd
Constitution and By-Laws.....	Pete Mattei
Faculty and Program Planning.....	Walt Mulyca
Finance.....	Vern Loesing
Financial Aids.....	Bob Wolf
Jackling Fund.....	Al Buescher
Nomination.....	Bob Klorer

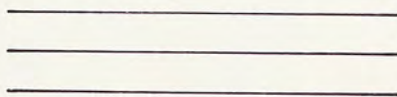


NO POSTAGE  
NECESSARY  
IF MAILED  
IN THE  
UNITED STATES

**BUSINESS REPLY MAIL**  
FIRST CLASS PERMIT NO. 18 ROLLA, MO.

POSTAGE WILL BE PAID BY ADDRESSEE

**MSM-UMR Alumni Association  
University of Missouri - Rolla  
Harris Hall  
Rolla, Missouri 65401**



CLIP AND FOLD TO FORWARD YOUR CHECK

ATE  
980  
980  
980  
980  
980  
980  
7-18  
980  
980  
sday

MSM-UMR ALUMNI ASSOCIATION  
 University of Missouri-Rolla  
 ROLLA, MISSOURI 65401

2ND CLASS POSTAGE  
 PAID AT ROLLA, MO. 65401

2171500  
 JOHN W KOENIG  
 UMR  
 204 ROLLA  
 ROLLA MO 65401

1980 ANNUAL ALUMNI FUND CONTRIBUTION

--	--	--	--	--

NEWS FOR THE MSM ALUMNUS

FROM NAME: \_\_\_\_\_ CLASS \_\_\_\_\_

SPOUSE'S NAME: \_\_\_\_\_ PLEASE SEND \_\_\_\_\_ MINER DECALS

STREET \_\_\_\_\_  NEW

CITY \_\_\_\_\_ STATE \_\_\_\_\_ ZIP \_\_\_\_\_

TITLE \_\_\_\_\_  NEW

EMPLOYMENT \_\_\_\_\_  NEW

STREET \_\_\_\_\_  NEW

CITY \_\_\_\_\_ STATE \_\_\_\_\_ ZIP \_\_\_\_\_

Annual Alumni Fund contributions are tax deductible. Checks payable to the MSM-UMR Alumni Association, Harris Hall, UMR, Rolla, MO 65401, (314) 341-4172.

<input type="checkbox"/>	\$500.00	<input type="checkbox"/>	\$250.00	<input type="checkbox"/>	\$100.00	<input type="checkbox"/>	
--------------------------	----------	--------------------------	----------	--------------------------	----------	--------------------------	--

DONORS OF \$100.00 OR MORE QUALIFY FOR THE CENTURY CLUB

<input type="checkbox"/>	\$50.00	<input type="checkbox"/>	\$25.00	<input type="checkbox"/>	\$20.00	<input type="checkbox"/>	\$15.00
--------------------------	---------	--------------------------	---------	--------------------------	---------	--------------------------	---------

COMPANY MATCHING GIFT FORM ATTACHED

--	--	--	--	--	--	--	--	--	--

THE MSM-UMR  
 ALUMNI ASSOCIATION  
 University of Missouri-Rolla  
 Supports:

- Scholarships
  - Educational Assistants
  - Athletic Programs
  - Music Department
  - Student Awards
  - Faculty Awards
  - Libraries
  - MSM Alumnus
  - Newsletters
  - Homecoming
  - Alumni Awards
  - Alumni-Student-Faculty Conference
  - Commencement
  - Class Reunions
  - Area Meetings
  - Alumni Records
  - Alumni Directory
  - Special Projects
- (Gifts Are Tax Deductible)

