



Missouri S&T Magazine, July-August 1947

Miner Alumni Association

Follow this and additional works at: <https://scholarsmine.mst.edu/alumni-magazine>

Recommended Citation

Miner Alumni Association, "Missouri S&T Magazine, July-August 1947" (1947). *Missouri S&T Magazine*. 231.

<https://scholarsmine.mst.edu/alumni-magazine/231>

This Magazine is brought to you for free and open access by Scholars' Mine. It has been accepted for inclusion in Missouri S&T Magazine by an authorized administrator of Scholars' Mine. This work is protected by U. S. Copyright Law. Unauthorized use including reproduction for redistribution requires the permission of the copyright holder. For more information, please contact scholarsmine@mst.edu.

July-Aug, 1947

MSM ALUMNUS

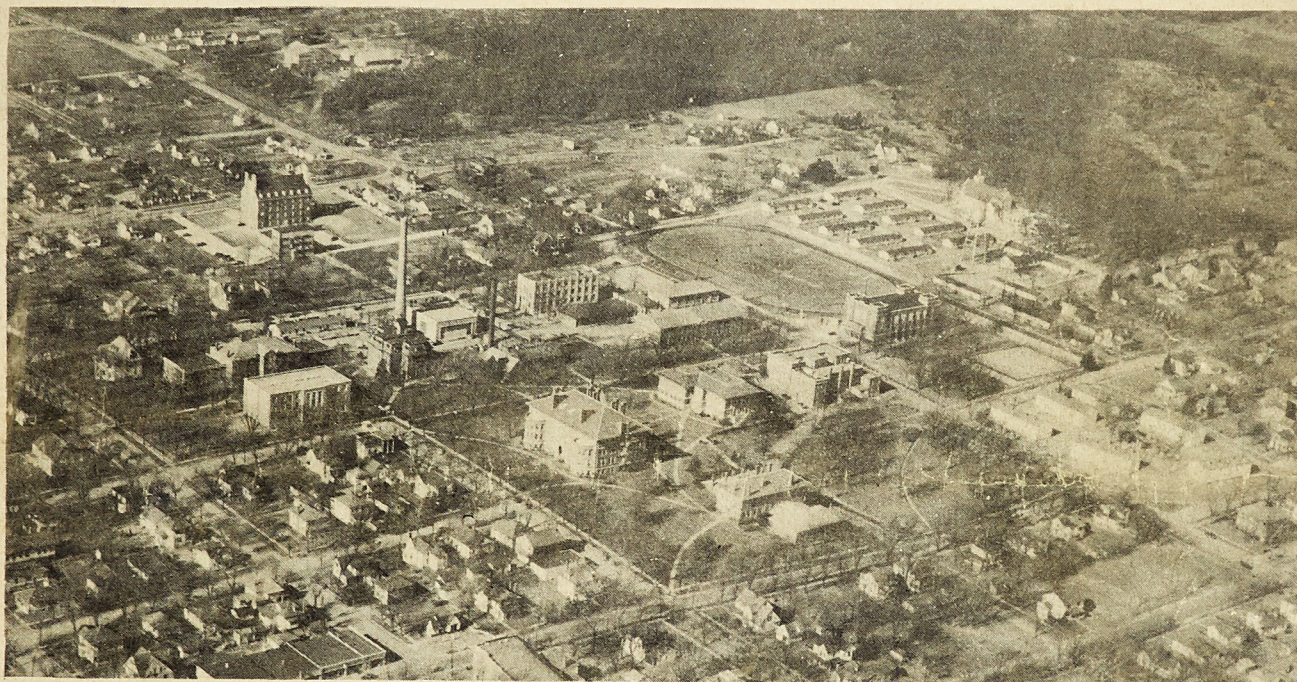
Missouri School of Mines and Metallurgy
ROLLA, MO.

VOL. 21

JULY-AUGUST, 1947

No. 4

Campus at MSM Awaits Return of Old Grads at Seventy-Sixth Homecoming, November 8



COURTESY, ESQUIRE STUDIO

Feature Event to Be Grid Game with Cape Girardeau

Plans are being made for the biggest homecoming in the history of MSM on November 8, when the Missouri Miners are slated to meet the Cape Girardeau Indians, last year's conference champions.

Before the game on Saturday morning there will be a convocation at 10:30 a. m. in Parker Hall at which Dr. Mervin J. Kelly, '14, vice-president of the Bell Laboratories, will deliver the address. Awards to alumni and others for distinguished service will be presented at this time.

The annual Homecoming Banquet will be held Saturday evening and will be followed by the Homecoming Ball in the Jackling Gymnasium. President Hasselmann has expressed the hope that all alumni possible will come back to MSM for this seventy-sixth homecoming celebration.

The day before homecoming, on November 7, the Board of Directors of the Alumni Association will hold a meeting with the President's Visiting Committee and

(Continued on Page 14)

Summer Commencement Held in Parker Hall August 28

Commencement exercises for summer graduates were held in Parker Hall on August 28 at 8 o'clock in the evening. C. G. Roush, President of the Missouri Society of Professional Engineers, delivered the commencement address on "Orientation of the Engineering Graduate."

Baccalaureate was held on the evening of August 27 with the Reverend G. B. Seager of the Lutheran Church of Rolla as the principal speaker. A reception for the seniors and their family and friends and the faculty was held immediately after Baccalaureate on the lawn of Dean Wilson's home.

Forty-five of the summer graduates received the degree of Bachelor of Science, while 12 received Masters degrees. Among those receiving advanced degrees were the following MSM men: Charles D. Geiger, '43, Kor Uyetake, '45, Roger D. Moeller, '44, Robert M. Montgomery, '44, Theodore J. Roemer, '43, and James A. Crookston, '42.

CAMPUS NEWS

Chem Building, Dormitory Assured by Legislature

The completion of the new chemistry building and the construction of a dormitory on the campus of MSM were provided in the annual appropriation bill passed by the legislature and recently signed by Governor Phil M. Donnelly.

The addition to the chemistry building, for which \$262,500 has been reappropriated, will be on the south end of the present structure. The unit completed in 1941 was finished at a cost of \$168,000, bringing the total cost of the building and the basic equipment to \$438,000.

Construction of the new dormitory was not started last year due to the uncertain material supplies and costs. However, the legislature reappropriated \$262,500 which will be added to an equal amount to be raised by revenue bonds as authorized by the legislature. These bonds will be repaid from the income from the dormitory bringing the total cost of the building to \$525,000.

The dormitory is being constructed on what is known as the "hospital lot" bounded by Bishop and State streets on the east and west and Ninth and Tenth streets on the north and south. It will house approximately 200 students and will have a cafeteria to take care of 600.

President Middlebush and Dean Wilson, with the approval of the Board of Curators, hope eventually to have a one and one-half million dollar installation of which the new dormitory will be the nucleus. They plan through future additions to have living accommodations in the dormitory for 500 students and to include a student union and infirmary. These various units when completed will cover the entire "hospital lot" and will be grouped together in architectural design.

The legislature also appropriated \$100,000 to begin the construction of a new Mineral Industries building, but a technical error in drawing up the appropriation bill resulted in its being discarded from the appropriation. Dean Wilson, however, expressed the hope that it will be introduced and passed at the next session of the legislature.

The appropriation for personal services, additions, repairs, replacements and the veterans program, was increased approximately 20% bringing the amount to \$607,575.

Both President Middlebush and Dean Wilson were pleased with the appropriation which during the current year will amount to an expenditure of \$2,116,250 for operations and construction work on the campus.

MSM Coal Mining Instruction Is Praised by Industry's Expert

M. D. Cooper, manager of vocational training for the National Coal Association, described the facilities at MSM for instruction in coal mining as "excellent." He visited the campus and the Mining Department on July 28.

Mr. Cooper is making a tour of the educational institutions in the United States which teach mining in

order to determine the quality of instruction the students are receiving in the field of coal mining.

According to Mr. Cooper the National Coal Association has begun to realize that education in their fields is not advancing as it should so they are trying to find out why and if possible to remedy the situation. Besides his visits to thirty-five colleges and universities, Mr. Cooper spoke to high school students on his tour in an effort to stimulate their interest in mining.

Dean Wilson Member of Council For Professional Development

Dean Curtis L. Wilson has been appointed by the Board of Directors of the American Institute of Mining and Metallurgical Engineers as a representative on the Engineers Council for Professional Development. He will fill the unexpired term of Dr. Thomas T. Reed, former Professor of Mining at Columbia University, who died recently.

The Council is the governing body of the Engineers Council for Professional Development and is made up of three representatives from each of the following: American Society of Civil Engineers, American Institute of Mining and Metallurgical Engineers, American Society of Mechanical Engineers, American Institute of Electrical Engineers, Engineering Institute of Canada, American Society for Engineering Education, American Institute of Chemical Engineers, and the National Council of State Boards of Engineering Examiners.

Dean Wilson will remain a member of the Committee on Engineering Schools and Chairman of Region VI of the Engineers Council for Professional Development, to which he was appointed some time ago. This governing body for the Council acts upon recommendations of the Committee on Engineering Schools.

He was further honored recently by being appointed Chairman of the Mineral Industries Educational Division of the American Institute of Mining and Metallurgical Engineers.

MSPE, Founded at MSM Decade Ago, to Have Convention Here

The Missouri School of Mines, the birthplace of the Missouri Society of Professional Engineers, will be host to the state-wide convention of the Society on October 24, 25, and 26.

The MSPE was launched in Rolla on January 9, 1937 with Professor J. B. Butler and Professor E. W. "Skip" Carlton of the Civil Department as the pioneer organizers. It was largely due to the efforts of Professor Butler that the meeting was called.

Since that first meeting with its forty members the MSPE has grown into an active Society of approximately 1200 engineers. The School of Mines campus, its laboratories, and equipment will be open for inspection by the visiting engineers.

Dean Curtis L. Wilson is president of the local chapter of the MSPE.

PRESIDENT'S PAGE

MSM ALUMNUS

Issued bi-monthly in the interest of the graduates and former students of the School of Mines and Metallurgy. Subscription price \$1.50, included in Alumni Dues. Entered as second-class matter Oct. 7, 1926, as Post Office at Rolla, Mo., under the Act of March 3, 1879.

Officers of the Association

Karl F. Hasselmann '25.....President
Harry Pence '23.....Vice President
James L. Head '16.....Vice President
Howard M. Katz '13.....Secretary-Treasurer

Board of Directors

F. C. Schneeberger '25, Chairman
Barney Nuell '21. M. E. Nickel '38.
J. M. Wanenmacher '23. R. G. Prough '38.

Alumni Association Grows in Spite of Difficulties

By J. M. Wanenmacher, '23
Director, M. S. M. Alumni Association

You have previously enjoyed contributions to this column by our president and by each of our vice presidents. It now becomes the duty of the directors to assume this responsibility. The writer knows of no subject more worthy of discussion than our Alumni Association.

There is no doubt in my mind that it is more difficult to organize an alumni association and have it function in the proper manner when composed of graduates of a school such as ours. In the first place, we simply have less material to work with. The average state university has ten to twenty times as many graduates as our school. Assume that some such school enrolls the same percentage of graduates as we have obtained. Instead of 1,000 members their alumni association would have 10,000 to 20,000 members. This is a large organization by any standards.

Graduates Widely Scattered

In the second place, when our graduating class ventures forth its members are scattered to the four corners of the earth. This is also in marked contrast to the average state university where sixty to seventy-five percent of the graduates remain within the state. Their alumni groups often become powerful political influences and are able to render their school considerable assistance, particularly when seeking appropriations from the legislature. The vast majority of our members are not residents of Missouri and there is little doubt that our political influence would be much greater if our members controlled more votes in Missouri. It should be stated, however, that discussion with present and past officers of our association indicates that the officials of the university, the board of regents and the legislature have given due consideration to the opinions and desires of this association. Nevertheless, the fact remains that we would undoubtedly have a stronger organization if most of our graduates were concentrated in a small geographic area.

In the third place, the roving life which many of us

must lead in following our professions tends to make one egocentric and unsociable. It is not uncommon for oil companies or mining companies to transfer their employees every year or two. The writer can discuss this subject authoritatively and would like to relate the following experience: Shortly after being transferred to a mid-western city, the wife and I joined the Newcomer's Club, which, as the name signifies, was an organization for the purpose of acquainting newly arrived residents with each other. At the first meeting we received a prize for being the newest newcomers. When the time for the next meeting arrived one month later, we had transferred again. Many of you have probably had similar experiences. Under these circumstances, one does not make a special effort to become acquainted with people. There is little inducement to join the Rotary Club, the Chamber of Commerce, or devote time and effort to betterment of the community. Unless a man is made of different material than average, he crawls into a shell of indifference. He devotes his time and attention to his work, his family and his hobbies, and lets the rest of the world go by. Men of this temperament are not the best material for an alumni association.

A Remarkable Period of Growth

In spite of all the handicaps mentioned above, this association has recently experienced a remarkable period of growth and rejuvenation as a result of the enthusiasm and untiring efforts of a few, particularly our past president and our president. Although their efforts have taken us a long way up the hill, our organization is by no means over the hump. If it does not continue to grow, it will stagnate and die. For this reason the fact that we have not materially increased our membership above that of last year is alarming to the writer. Each of us should make a special effort to increase the membership. Many of those who attend the local meetings more or less regularly have neglected to pay their dues and although they are loyal alumni their names are not upon the rolls of this association. Many others would attend the local meetings and would become members of this association if some of us would urge them to attend. If each of us would consider himself a one-man membership committee and act accordingly, we would really go places.

In conclusion, the writer would like to point out that all of us got much more out of our sojourn at Rolla than we put into it. It was one of the few instances in life where this is true. Another and not dissimilar break which we all experienced was the care, attention and efforts which our parents bestowed upon us. Most of us attempt to repay this debt to our parents. However, few of us have made a real effort to repay our obligation to the school which trained us to earn our livelihood. One way in which we can express our appreciation is to support the Alumni Association to the best of our ability.

President of Alumni Visits MSM Campus With Classmate

Karl F. Hasselmann, '25, president of the Alumni Association, and Fred Schneeberger, '25, visited in Rolla on July 26. They conferred with Howard Katz, '13, and school officials concerning Alumni affairs.

PRESIDENT'S FINANCE COMMITTEE

Finance Committee Plans Endowment Fund Campaign

This is the second of a series of articles informing members of the Association of the background of the committees appointed by the President to help in the administration of the affairs of the Association.

The Finance Committee is charged with the responsibility of supervising the endowment fund as set up in the constitution of the Association. Under the chairmanship of C. Cabanne Smith, '26, this committee is formulating plans which will make it possible for every graduate who feels so inclined to participate in the building up of this endowment fund. When these plans are completed by the committee, a letter will be sent to all graduates of the School outlining the program.

C. CABANNE SMITH

A veteran of World War II, C. Cabanne Smith, '26, Chairman of the Financial Committee, served over four years in the Engineer Section of Third Army Headquarters receiving the Bronze Star and Battle Stars for the Normandy, Northern France, Ardenes, Rhineland, and Central Europe campaigns. He held the rank of Colonel.

While he was a student at MSM, Cab was an active member of Kappa Alpha, Tau Beta Pi, Theta Tau, and was treasurer of the Class of '26 his senior year.

After graduating in 1926 with a degree in Mining Engineering, Cab went to Chile as assistant smelting testing engineer and mining engineer with the Braden Copper Company. For four years he was engineer and assistant manager of the Mid-west Piping and Supply Company, and from 1933 to 1940 was manager of the Personal and Safety Departments and the Industrial Sales Department of the Houston Oil Company and Houston Pipe Line Company of Houston, Texas. Since his discharge from the service, Cab has been industrial engineer of the Second National Bank of Houston.

Cab belongs to the Society of Military Engineers, the American Petroleum Institute, and the Houston Engineers Club.

J. H. STEINMESCH, '06

Jesse Herman Steinmesch, '06, vice-president and general manager of the Minerva Oil Company considers

his outstanding scholastic achievement to be the E he made in Freshman Chemistry.

He was graduated from MSM with a degree in Mining engineering in 1906 and worked for the Desloge Consolidated Lead Company from 1905 to 1930 and was assistant superintendent and later superintendent of this company; he was consulting mining engineer for the Mancha Storage Battery Locomotive Company from



J. H. Steinmesch and Jon Gill Montgomery



C. Cabanne Smith



Gunnard E. Johnson

1930 to 1932; and was Acting Professor of Mining at MSM for three years. He has had his present position as vice-president and general manager of the Minerva Oil Company since 1937. Jesse adds that a good many consultation jobs of comparatively short duration are scattered over this stretch of time, and he has met lots of nice people.

A member of Phi Kappa Phi, Jesse also belongs to the American Institute of Mining Engineers, the Illinois Geological Society, the Independent Petroleum Association, the American Mining Congress, and the Missouri Academy of Science. He co-authored the U. S. Bureau of Mines Bulletin 423 on "Underground Loading Machines."

Jesse says, "I take off for Church and Sunday School on Sundays, otherwise, my work is my principal hobby. I am interested in seeing the coming crop of MSM Engineers making better and faster progress than we who came out nearly fifty years ago. I was honored with the nomination for presidency of the MSM Alumni Association many years ago, but was defeated by Jake Walsh, '17. You can't beat the Irish."

Gill Montgomery, '34, is married to Jesse's daughter, Janet, and his other daughter, Barbara is Mrs. H. E. Miller. He has five grandchildren, one of whom, Jon Gill Montgomery, probably MSM 1957, appears in the snapshot.

GUNNARD E. JOHNSON, '16

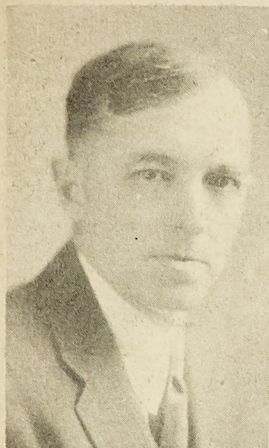
Gunnard E. Johnson, '16, general manager of the East Chicago Indiana Plant of the Eagle Picher Company, is a prominent figure in industry.

He started his career in 1902 working as assistant assayer and later chemist for the Anaconda Copper Mining Company. He entered MSM in 1912 and was a student instructor in Chemistry for three of his college years.

After he graduated in 1916 with a degree in metallurgy he worked for the Arizona Copper Company; he next did experimental electrolytic and metallizing work; and was foreman for the Electrolytic Tank House. He went with the International Lead Refining Company, Anaconda Lead Product Co., International Smelting and Refining Co., as a metallurgist in 1918 and became plant manager of this concern. In 1946 he joined the Eagle

(Continued on Next Page)

PRESIDENT'S FINANCE COMMITTEE



Frank R. Loveridge

richer Company taking over his present job of general manager.

Gunnard is the author of "The Effect of Borax on Matte Fusions," "Western Lead Refined by Parkes Process," and "Review of Lead Smelting and Refining."

Miners who were in school with Gunnard will remember him for his many activities. He was president of the Y. M. C. A., a member of the Pipe and Bowl Club, the Athletic Association, Business Manager of the Miner, Treasurer of the Rollamo Board, and a member of Kappa Sigma, Tau Beta Pi, and Theta Tau.

A leader in the Alumni Association, he was vice-president and president of the Chicago Section, and vice-president of the Association from 1941 to 1945.

Gunnard is a member of the American Institute of Mining and Metallurgical Engineers and the East Chicago Chamber of Commerce. He likes to play golf and bowl.

FRANK R. LOVERIDGE, '09

Frank R. Loveridge has worked for the Alpha Portland Cement Company since his graduation from the School of Mines in 1909. He started with Alpha as a chemist, was next assistant superintendent, and is now superintendent of the company.

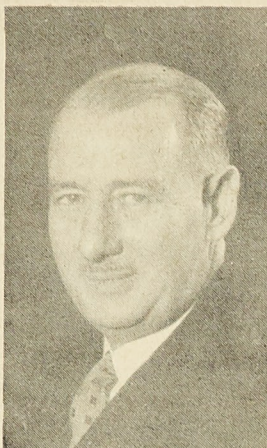
While Frank was in school he distinguished himself in athletics by breaking the MSM track record in the 220 hurdles. He was president of the Junior class, and a member of the Grubstaker Club which is now Triangle Fraternity.

Frank has a completely MSM family as his two sons, Joel Loveridge, '39, and Warren Loveridge, '41, as well as his son-in-law, James Roux, '41, are all Miners. Active and interested in Alumni affairs Frank was president of the St. Louis Section in 1939.

WARREN E. TEN EYCK, '23

Warren E. Ten Eyck, '23, graduated from MSM in Mining Engineering. Active in campus affairs he was a member of Satyr, Tau Beta Pi, Kappa Sig, as well as a member of the Rollamo Board.

After leaving MSM he went to the University of California for two years studying business administration and Petroleum Engineering. He was with the Shell Oil Company as a Petroleum Engineer from 1925 to 1929 working in California, Miri, Sarwak, Borneo; and



Warren E. Ten Eyck

in Trinidad, British West Indies. At present he is a Consulting Petroleum Geologist working in the Los Angeles Basin and the San Joaquin Valley in California.

Warren saw service in World War I, and was overseas for fourteen months.

He is a Mason and belongs to the American Association of Petroleum Geologists and the Rotary Club. An outdoor sport enthusiast he likes to fish and hunt.

Dr. William J. Knapp Joins Ceramics Department Staff

Dr. William J. Knapp recently joined the teaching staff of the Department of Ceramic Engineering.

A graduate of New York State College of Ceramics, Alfred, New York, he was the recipient during his senior year of the fellowship sponsored by the Electro Refractories and Alloys Corp. of Buffalo, New York, for research on refractories. Following his graduation from Alfred in 1939 he received a research assistantship at Massachusetts Institute of Technology, and was graduated in 1942 with the degree of Doctor of Science in ceramics.

For over a year he carried on research at the New York State College of Ceramics under a fellowship sponsored by the North American Cement Corporation. He served from 1943 to 1946 as an aerological officer in the aviation branch of the U. S. Navy, a year of which time he spent at New York University in New York City.

Following his release from active duty he worked as senior research ceramist for the Pennsylvania Salt Manufacturing Company at their Whitmarsh Research Laboratories in Philadelphia.

Dr. Knapp is a member of the American Ceramic Society, the American Chemical Society, the Institute of Ceramic Engineers, and Keramos.

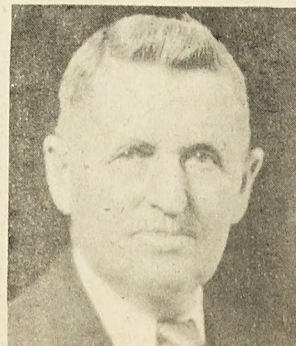
Dr. R. F. Ratliff Dies

Ryland Fletcher Ratliff, professor at MSM for seventeen years before his retirement in 1936, died on June 28. He was 89 years old.

Professor Ratliff came to MSM as Assistant Professor in the Department of Physics. He received his A. B. and A. M. Degrees from Indiana State University. He taught Physics at the Central Normal College at Danville, Indiana, before coming to MSM, and during the first world war taught at Indiana State University.

He was a fellow of the American Association for the Advancement of Science, a member of the American Physical Society, and of the Missouri Academy of Science. He was president of the Indiana Science Association for two years.

Professor Ratliff is survived by two daughters, Mrs. F. E. Weakley of Rolla and Mrs. Cleo Hadley of Danville, Indiana.



Prof. R. F. Ratliff

ATHLETICS

Thrills, Upsets Predicted in Coming Football Season

By Jerry Berry, '49

Well it isn't very long now until Ole King Football will usher in the 1947 season. A season, incidentally, that is expected to break all attendance records and to provide a maximum of thrills and upsets for collegiate followers.

Here at MSM football practice will begin on September 1 in preparation for the season's inaugural game with St. Louis U. on September 26 at Walsh Stadium in St. Louis. Fans are looking forward to another thrilling game as previous contests between these two schools have provided many a thrilling battle in the past. In 1930 the two teams battled to a 33-33 tie in one of the most exciting games ever played anywhere or any time. St. Louis has since gone "big time" and MSM is the only small school remaining on their schedule.

MSM's prospects aren't very bright, however, as a total of 12 lettermen from last year's squad will be absent from all indications. 1946 lettermen John Hazlett, Gale Fulghum, Jim Stephens, Tony Leone, and "Moose" Carafiol are absent via the "sheepskin" route, while the other 7 are still in school. These 7 are too tied up in studying to continue with football. It is a rare sight indeed to have football lettermen in school and not out for football. From all indications Jerry Berry, Joe Hepp, Frank Hequemberg, Don Matthews, Alan Beveridge, Joe Good, Art Schmidt, George Eadie, Calvin Duke, Earl Hoehn, and Bill Gammon will not be playing football this year—they're all lettermen too. Of course they'll be missed.

Two or three outstanding prospects have enrolled in school. Thurston, all city, St. Louis High guard of 1946, Bill Scheu, great guard from Shurtleff College last year, Gene Guiney a big tall end expected to do big things and Kwaddus a young sophomore quarterback that may give Bob Kemper a battle for 1st string quarterback.

Neal Wood and Paul Fullop will co-captain the 1947 team. Both boys are from South Illinois and are great players.

The roster to date includes Don Heath, Gene Guiney, Bill Teas, Bill Weimanthe, Ends; Luther Steele, Neal Wood, Al Petska, Carl Block, Tackles; Pipkin, R. C. Guareke, Oliver Jorke, Thurston, Scheu, Marshall, Vogt, Guards; Ralph Stallman, Shourd, Meyer, Center; Paul Fullop, Bob Kemper, Bob Reichelt, Dale Stone, Dick Whitney, Jim McGrath, Al Swartz, Monte McCord, Ed Kwaddus are all backs.

In addition we have two additional members on the coaching staff to assist Coach Bullman and Coach Hafeli. Coach Chester Bernard and W. E. Speece will help with the football squad this year.

H. SMITH CLARK, '18, OPENS CONSULTING OFFICE

H. Smith Clark recently announced his entrance into Consulting Petroleum Geology and Engineering. He has opened an office at 1016 Sinclair Building, Fort Worth, Texas. Smith graduated from MSM in 1918 and has been associated with the Sinclair Oil Company for a number of years.

1947 MSM Football Schedule

Sept. 26, Friday.....	8 p. m.....	St. Louis U. there
Oct. 4, Saturday.....	8 p. m.....	Memphis State there
Oct. 10, Friday.....	8 p. m.....	Maryville there
Oct. 18, Saturday.....	2 p. m.....	Warrensburg here (Parents' Day)
Oct. 24, Friday.....	8 p. m.....	Kirksville there
Oct. 31, Friday.....	8 p. m.....	Springfield there
Nov. 8, Saturday.....	2 p. m.....	Cape Girardeau here (Homecoming)

50-Year Graduate Pays Tribute To Liberal Education in Missouri

John S. Cameron, one of the three members of the class of '97, which celebrated the 50th anniversary of its graduation this spring, was unable to be present at commencement to receive personally the 50 year medal. He wrote the following letter to Dean Wilson:

"I recall distinctly that in September 1893 there were but 125 technical students enrolled as freshmen for the various degrees in engineering, and the magnificent increase in attendance should be extremely gratifying to all those either directly or indirectly responsible for these results.

"When I enrolled as a freshman student at MSM in September, 1893, my home was in McAlester, Indian Territory. At that time we had no organized school systems or universities in that unorganized Territory and such elementary education as it was possible for us to receive was entirely from either private or denominational schools.

"My attention was called to the Missouri School of Mines at Rolla, Missouri. There for four years I labored for the B. S. degree in Mining Engineering and in June, 1897, I was proud to receive from Dr. Jesse, then President of the University of Missouri, together with six classmates, my diploma conferring on me the degree that I sought. I have always been grateful to the great State of Missouri for the liberal opportunities it offered to out-of-state students; for at MSM I received my basic training as an engineer at practically no cost to me or my family and it has served me well in the 50 years that followed.

"I take this opportunity to pay my humble tribute to a great state and its great citizenship for their broad and liberal policies in connection with their educational systems.

"I, likewise, am not unmindful of the four years I spent with the people who made up the city of Rolla, for there I lived in an atmosphere of social and moral refinement unsurpassed in any part of our country to which my very active 50 years have taken me since my graduation. There were the Faulkners, Kinneys, Scotts, Woods, Longs, and many others whom I cannot recall, all gracious and cultured people ever kind and helpful to the student body and, may I say, great boosters for MSM and its future welfare.

Please extend to the class of 1947 my hearty congratulations for success and prosperity in the professions they have chosen."

PRESIDENT'S VISITING COMMITTEE

Dr. Kelly, George Mellow Are Latest Appointments

Two new members have recently been appointed on the President's Visiting Committee by President Hasselmann. Dr. Mervin J. Kelly, '14, represents the Science Departments and George E. Mellow, '18, the Metallurgy Department. The biographies of the other members of the President's Visiting Committee were carried in the May-June issue of the "Alumnus."

DR. MERVIN J. KELLY, '14

Dr. Mervin J. Kelly, '14, executive vice president and director of research of the Bell Telephone Company is one of the most outstanding men of science in the United States today.

He was the first member of the class of 1914, in point of time, to be elected to Tau Beta Pi, and he was also a member of Sigma Nu fraternity, and president of the Y. M. C. A. He received his Master of Science degree from the University of Kentucky in 1915, and the degree of Doctor of Philosophy from the University of



Dr. Mervin J. Kelly

Chicago in 1918. In 1936 he received the honorary degree of Doctor of Engineering, Honoris Causa from the Missouri School of Mines, and in 1946 received his Doctor of Science degree from the University of Kentucky.

Immediately after Dr. Kelly completed his doctorate work at the University of Chicago he went to work in research with the Bell system and has worked continuously with this organization since that time. In 1936 he was made director of research of the Bell Telephone Laboratories and executive vice president and director of research in 1944. During the period of his professional career preceding that concerned with general administration, Dr. Kelly specialized in electronics. He has published many papers in this field of communication technology.

As executive vice president of the Bell Laboratories, Dr. Kelly directs an organization of some 6,000 employees, approximately 2,500 of whom are scientists and engineers. The professional staff of the laboratories com-

prises mathematicians, physicists, chemists, and electrical, mechanical, and chemical engineers.

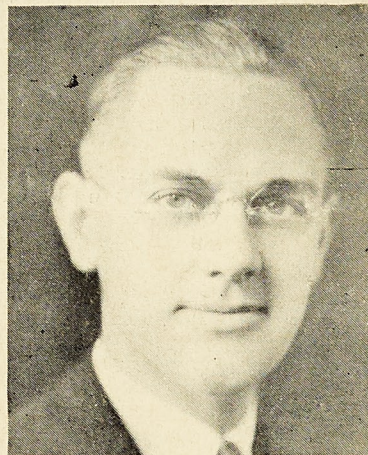
During the war Dr. Kelly gave the major portion of his attention to the radar, electrical gun director, and basic research programs. The Bell Laboratories developed more than half the radar equipments used by the United States. He was a member of the National Defense Research Committee Division that was in charge of radar programs.

Dr. Kelly is a Fellow of the American Physical Society, the American Acoustical Society, the Institute of Radio Engineers, and the American Institute of Electrical Engineers. He was elected to the National Academy of Sciences in 1945.

GEORGE E. MELLOW '18

George E. Mellow, '18, was active in football and track during his college years as well as a member of the MSM Players and Kappa Alpha Fraternity.

After graduation George was commissioned a 2nd Lieutenant in the Engineer Corps and served in England and France during World War I. Upon his release from the army he went with the Liberty Foundry Company of St. Louis, manufacturers of gray iron, steel



George E. Mellow

castings, and warm air furnaces, and he is now a partner in this concern.

George received the advanced degree of Mechanical Engineer from MSM in 1924.

He spends most of his spare time working on his farm in Jefferson County, Missouri, where he has 150 acres in the Ozark foothills. George collects stamps and is interested in photography.

He has one son, James, who is serving in the U. S. Army in Tokyo.

Hasselmann Confers With Alumni Representatives in New York City

Alumni President Karl F. Hasselmann, '25, was in New York City the week of July 21. While there he conferred on Association matters with Vice-President Head, '16, M. J. Kelly, '14, and Enoch R. Needles, '14.

FRATERNITIES

Pi Kappa Alpha Has Strong Chapter, With Bright Future

by Bob Rutledge '50

Since the end of the war Alpha Kappa has taken great strides toward a bright future on the campus of MSM.

The war has increased the enrollment at MSM to well over 1500.

Many of the old actives have returned to their alma mater and with the new initiates and pledges, have



Home of the Pi K. A.'s

brought the house membership up to fifty members. This does not, of course, include the married Pi K A's on the campus.

Some names that have not echoed through the halls of Pi K A since the start of the war are Joe Bush, "Dink" Owens, Bill Hellwege, Wayne Gollub, Leroy Fuller, Ted Wolfarth, Bob Kreutzer, Johnny King, and Bernie Wagner. Men who have fallen under the marriage vows are Glen Merritt, Bob Phillips, Harry Kuhn, and Bill Hill.

There has been three initiations since the war and a total of 31 pledges have been initiated. This brings the number of Pi K A's on the campus to 65.

Pi K A has been very active socially since the war. It has weathered two St. Pat's very successfully. In the '46 celebration the chapter had the honor of having the queen as a date of one of the brothers, as well as winning the cup for the best float.

From the athletic standpoint Pi K A has been well represented on the campus with a total of five letter men; these men being composed of Dick Whitney, Dale Stone, Joe Bush, Bill Hill, and John King. Whitney and Stone were varsity football men while Bush, King, and Stone held down track. Bill Hill was an asset to the '46 Miner basketball squad. The man who has the most "laurels" is John King who has won all but two mile sprints since his return from the service. John, however, has never lost a two mile grind and has won both the mile and two mile events in the MIAA conference meets two years in succession.

In intramural standing Pi K A ranks well in the upper third of the numerous campus organizations. In track last year Pi K A lost a heart breaking meet by a half point. In boxing we have been strong continuously and completed this year with a smashing victory by

(Continued on Page 13)

Lambda Chi Alpha Celebrates Thirtieth Year on MSM Campus

By Joe Teel '47

Alpha Delta Zeta of Lambda Chi Alpha ("The Little Red Playhouse," or the "House Across the Tracks" to many of the Alumni) still holds forth at 800 Olive, as it has for many years. This last year was the anniversary of our thirtieth year on the campus and the House resounded with the rejoicings of the many alumni who made it back to renew old memories. It even seemed to many that the big old building that has been "home" to so many brothers also rejoiced.

However, not everything has run smoothly for twice Lambda Chi has experienced the fates of war. In the first war, the rapid enlistment of our brothers forced the house to interrupt operations. The sufferings and privations of those men are little known or realized by the present active chapter; but the second disaster is still clearly written in our minds. Our loss was great in this encounter, but we fully realize its smallness when compared to others. Three of our brothers could not make it back to Homecoming, but in their stead, three memorial plaques hang in the Chapter House that we might remember their sacrifice.

Not only did some of the older brothers come back for a visit but many came back to pick up where they had left off in school, whether it be for one or two semesters or one or two years. Thus, within the last year the chapter grew from twelve men, (yes, we kept going even when that small) to sixty. Many of these brothers have returned and so quite a cross-section of this chapter was present with the oldest active being John Andrews, number 200 and our latest brother number 340.

As much as we are glad to see our brothers back, the problems multiplied many-fold. We went from a chapter of twelve men struggling with the forces which



The "Little Red Playhouse"

were closing up organizations all over the campus to a chapter of sixty men with enough room for thirty. Decisions were quickly made and work was started on extending the dining room. As a temporary measure, tables were placed in the card room. With a lot of work on the part of the brothers, the dining room annex was

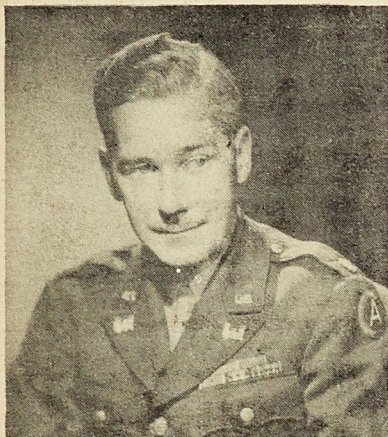
(Continued on Page 14)

MILITARY NOTES

Map Service Finds Music Aids Production Efficiency

By Daniel Kennedy '26

The art of map making has witnessed many innovations in the last few years. Perhaps the most unusual of the mapping aids thus introduced is that recently inaugurated at the Army Map Service, Washington, D. C., namely, the use of music during working hours. Such use of music as a functional aid in an engineering plant represents a departure from standard operating practices.



Daniel Kennedy

It does not depart, however, from engineering concepts that proper design and application of all available tools result in increased efficiency.

The Army Map Service consists of four recently-constructed buildings, completely serviced with a public address system. Complete air-conditioning is available in two of the larger buildings which were designed specially to handle all map making phases including photogrammetric, geodetic, reproduction, administrative, relief model, map storage and distribution functions. These activities are carried out by approximately 2000 employees, most of whom fall into a technical category.

The Muzak Corporation recently introduced their office program of functional music for a trial period of thirty days. The programs thus submitted were the result of intensive research on the part of the Muzak Corporation. Special recordings were made of various types of music, such as classical, hill-billy, waltzes, etc., and objectional features, such as vocalists, drums and brass sections were eliminated. The result as it is "piped" over the public address system is pleasant music that allows full concentration on the job at hand.

In order to ascertain the reactions of AMS personnel to the music, a questionnaire was prepared covering the type of work performed, number of employees in a unit, effect on non-essential conversation or activities, inter-employee relationship, employee-supervisory relationship, employee attitude to work, attitude and action at arrival and departure times, absenteeism, periods during day when employee seems tired both before installation of music and afterwards, change in production efficiency and quality of work. In all cases allowances were made for the age and educational background of the people filling out the questionnaire.

A tabulation was then made, dividing the answers into worker categories, as mental, clerical, physical, precision and supervisory. Some very interesting results were obtained which verified similar studies made previously by the Muzak Corporation. Specifically, more than 92% liked the music; 84% thought it helped

in their work; less than 6% thought it made them nervous or otherwise interfered with their work. Those doing mental work indicated the greater preference for classical and semi-classical music, with the greater preference for swing and popular music coming from those doing physical work. Further, production efficiency increased from 0-10% among 45% of the personnel with no change registered by 54% and a decrease was listed by 1.5%. The effect on the number of errors decreased among 13% of the employees; work attitude improved among 67%; apparent tiredness decreased among 48%; conversation decreased 55% and inter-employee relationship improved 42%.

With the emphasis nowadays on increased production, management must not only seek improvements in equipment and plant, but must take active steps to provide working conditions in which the individual feels secure and satisfied. Functionalized music is but another means at AMS to achieve this objective.

Peebles Cited by British Empire

For Outstanding Service in Italy

Barney Peebles, '36, was one of the six Army veterans who recently received awards from the British Empire. Barney, who was made an honorary officer of the Military Division of the most Excellent Order of the British Empire, was a Lt. Colonel during the war.

The British decoration was presented to Colonel Peebles by Mr. A. Stanley Fordham, British Consul at St. Louis, on June 18, 1947. The citation for the award reads as follows:

"From 1st January to 2nd May, 1945, as assistant Chief of Staff, G-2, of the 85th (US) Infantry Division, Italy, Colonel Peebles exhibited outstanding professional skill and ability in furnishing the Commanding General with accurate information of the enemy disposition, strength and intentions during this period. During the spring offensive, Colonel Peebles' unswerving devotion to duty and timely accurate intelligence were of vital importance in enabling the division to cope with the rapidly changing situation and overcome the obstacles presented by the thousands of prisoners of war as the fleeing German Armies rapidly disintegrated as fighting units.

"Colonel Peebles' noteworthy achievements contributed to the success of the combat troops and to the Allied cause."

Barney, who received his basic military training as a R. O. T. C. student at MSM, has received many other citations and awards. He was awarded the U. S. Legion of Merit for his work as Supply Officer of the 85th Infantry Division in the Italian Campaign, and he received the Bronze Star with the Oak Leaf Cluster for the same type of work in the Po Valley campaign. The Italian Government awarded him the Italian War Cross for "exceptional valor" in defeating the enemy.

While at MSM Barney was president of Sigma Nu fraternity, and vice-president of Tau Beta Pi.

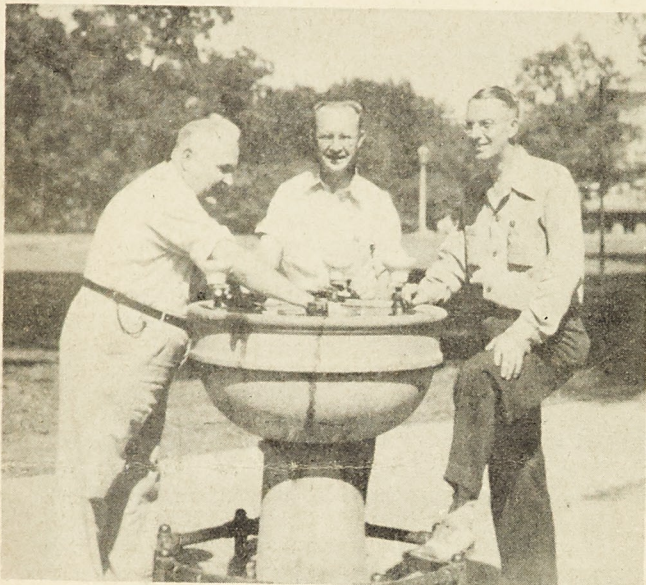
Make Plans Now to Attend Homecoming on Nov. 8

MEMORIALS ON

Many Reminders of Earlier Classes Are Still Standing

Do you members of the class of 1916 ever wonder if your sundial is still standing in front of Norwood Hall with the Missouri sun doing its bit to keep it in good working order?

This "Missouri red granite, handsomely polished on a concrete base with figures cut in stone and the top surmounted by a bronze pointer and with the chiseled words 'class of 1916' along the side" looks much the same today as it did when it was so eloquently described by the "Miner" some thirty-one years ago. As



Prof. Butler, '24, Prof. Gevecker, '31, and Prof. Carlton, '26, at the fountain which was erected as a memorial to Eddie Bohn.

the "Miner" said at that time, "It will certainly keep in mind the activities of the graduates during their four years here and they will be remembered as the best and the biggest class the school has turned out." The class of 1916 has lost the distinction of being the biggest class, but all agree it was one of the best.

The flagpole which stood for many years in front of Parker Hall has not fared as well as the sundial. It succumbed to the rust and was recently taken down.

This flagpole was erected in a burst of patriot feeling during the first World War. A mass meeting was held and according to the "Miner," "Patriotism ran riot. Dr. McRae started the 'fireworks' by announcing that arrangements were being made to provide a flagpole for MSM. The Doctor turned the meeting over to the student council. J. K. Walsh, president pro tem of the council, in a thrilling address accepted the trust and promised to have sufficient volunteers for raising and lowering the flag each morning and evening."

Jake immediately issued a plea for funds to the students and alumni of MSM with the following proclamation:

"True patriotism especially at this time demands

that the flag of the Nation be shown to the world. Consistent with this idea the student council of MSM appeals to you to assist in erecting a flagpole on the campus, high enough for all to see and revere, and strong enough to last when its builders have answered the 'great call'."

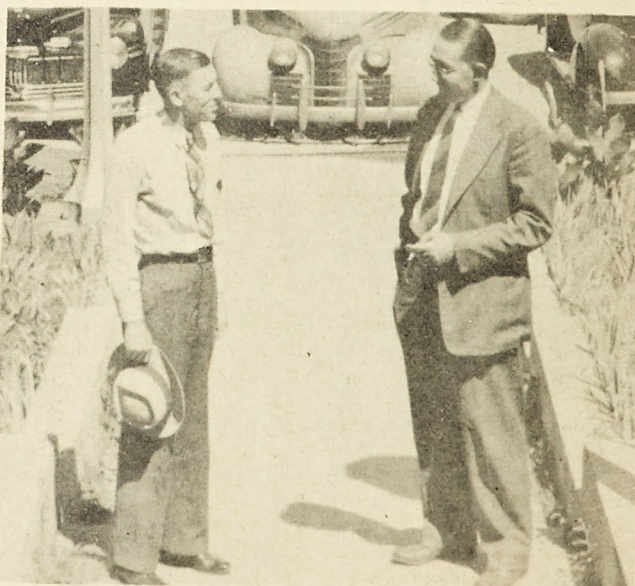
The class of 1918 accepted the challenge by volunteering their financial support as a solid unit. Others followed suit and in a short time the necessary \$350 was raised for the erection of the flag pole.

In November of 1920 the campus was saddened by the death of Eddie Bohn as a result of injuries received in a football game with Warrensburg Teachers College. A group of students and faculty members met and appointed a committee to design a suitable memorial to Eddie's memory. Professor H. H. Armsby was chairman of the committee, and the other members were Dr. C. H. Fulton, Prof. C. Y. Clayton, "Buddy" Cairns, E. J. Wendell, W. L. Stewart, L. E. Davidson, R. K. Stroup. "Thorny" Thornberry also had charge of a great part of the work.

The committee decided to erect a fountain to Eddie's memory. Money poured in from students, faculty, and from Eddie's friends, and a play was given to raise even more money for the memorial fund. "That the memory of Eddie Bohn may live in the minds of future Miners, contribute to the memorial fund by seeing 'Nothing But the Truth,' Parker Hall, April 27th."

The fountain was erected in due time and its cool water has been enjoyed by Miners ever since. Vandals removed the plaque with Eddie's name, but the fountain is much the same as it was when the students considered it "suitable to the memory of Eddie."

The triangulation stations for the campus surveying classes, which dot the campus lawn, were erected by the wounded veterans of World War I, the Vocates. In the spring of 1921 the Vocates elected officers and Gravy-foot Brandt suggested that the class adopt the class motto, "Class of 1941," as that should be the approximate date if any of them should happen to graduate from the School of Mines. Dan Kennedy, however, thought that the year 1941 had even greater sig-



Prof. Young and Assistant Dean Williams, '31, standing by the lamp-posts given to the School by the Class of 1924.

THE CAMPUS

nificance: that the class should hold its reunion in 1941 as he thought that another foreign war would commence by Christmas of that year. Dan wasn't far wrong.

These bronze tablets set in concrete blocks were designed by C. E. Bardsley, '20, and the late Major Charles E. Cooke in 1922, and patterned after the primary traverse stations and permanent bench marks of the U. S. Geological Survey. Professor Ernest E. Decker, a member of the Vocational Department staff, with the aid of several of the Vocates accomplished the feat of setting the "Class of '41" memorial campus stations as they can be observed today. These bench marks have been used by Miners taking surveying courses since that time.

The lampposts east of Parker Hall were given to the



Taking a solar observation with a wild theodolite over Station C erected by Veterans of World War I, just south of the gym is E. A. Weinel, '44, Jim Fisher, '48, and Professor Carlton.

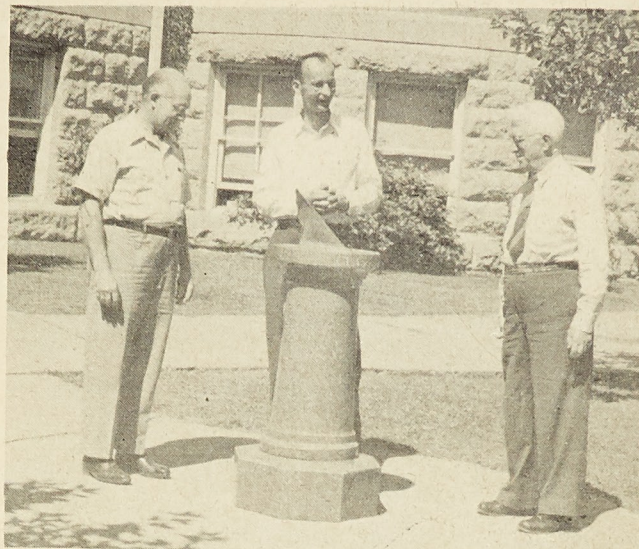
School of Mines by the class of 1924, who seem to be modest and failed to leave behind any written record of their gift. They are still standing and light the way of Miners who have done some late library studying.

Two plaques hang in the gym to the memory of Miners who died while they were still in school. One of them, cut in stone and surrounded with a wooden frame, was erected to the memory of Walter Howard Askew, '18, who died in St. Louis in an automobile accident in 1915. This memorial was chosen by a committee consisting of Babe Head, O. E. Stoner, R. L. Massey, T. L. Dawson, and W. O. Brandenburger.

The "M" Club dedicated the other plaque to William Waring, '45, of Oronogo, Missouri, who died in 1942 after being stricken with an attack of appendicitis. He was a member of the Varsity football team the year he died.

The benches which are located at various points around the campus and which are enjoyed by Miners in between classes and in nice weather are the gift of the Independents of the class of 1942. Construction of the benches was postponed due to the labor shortage and they were finally erected the summer of 1945.

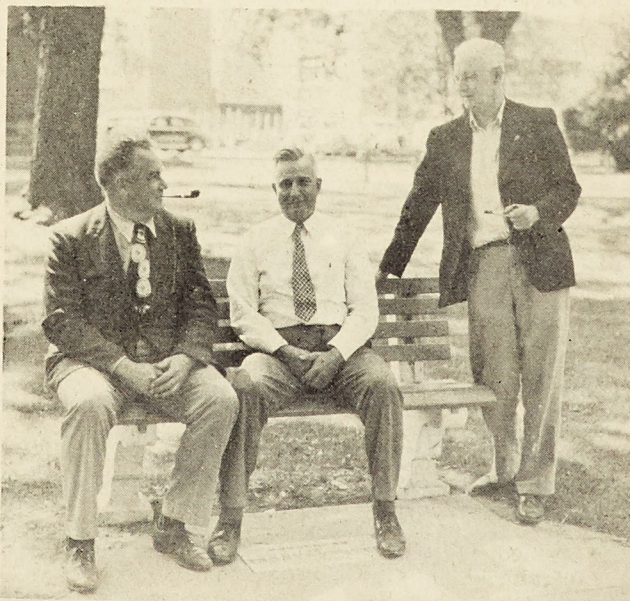
With the coming of the second World War, Miners again donned the uniform of the United States and felt



Prof. Lovett, '24, Gab Skitek, '43, and Dr. Woodman at the sundial erected by the Class of 1916.

the same kind of patriotism for their country that brought about the erection of the flagpole.

Word was received in 1944 of the death of Captain John W. Rayl, the first member of the class of 1942 to lose his life in action. Upon hearing of John's death, W. J. Lawler of the class of '42 suggested that some sort of a memorial be started for the boys who were killed in action, and he thought a scholarship fund would be a fitting tribute. A few weeks later a similar suggestion came from Jack Witt, then in Paris. Sid Burberry, who was president of the class of '42 during his senior year, felt that the scholarship fund was an excellent idea and he took the initiative in drafting a letter which was sent to the class of '42 requesting contributions. The purpose of the John Witcig Rayl Memorial Fund is to help worthy young men obtain an education.



Prof. Black, Dr. Schrenk and Prof. Goodhue, '27, relax on the benches donated by the Independents of 1942.

IMPROVEMENTS FOR

Power Plant Additions Will Bring Facilities Up to Date

By I. H. Lovett '24

The old Power Plant on the M. S. M. Campus, after having given faithful service for many years, is soon to be at least partially superseded by the new Power Plant. In the old boiler room boilers number two and three were installed in 1902; number one in 1904 and number four in 1912; since installation these 120 horse-power Heine boilers have given almost continuous service except for the usual periods for repairs and during light load.

The boilers of the new Power Plant were started for adjustments of controls and for acceptance tests during the last week of July. The two boilers in the initial installation in the new plant are Babcock and Wilcox Integral Furnace boilers, each with a capacity of 18,000 pounds of steam per hour and equipped with B and W chain grate stokers. The design pressure is 200 pounds per square inch but the present operating pressure is limited to about 150 pounds because of uncertain conditions of old steam mains. During the test period an output of 20,000 pounds per hour was reached, showing that the boilers will fulfill requirements in regard to rating. Space is provided in the boiler room for the installation in the future of a third boiler when additional capacity is needed.

Complete Automatic Control

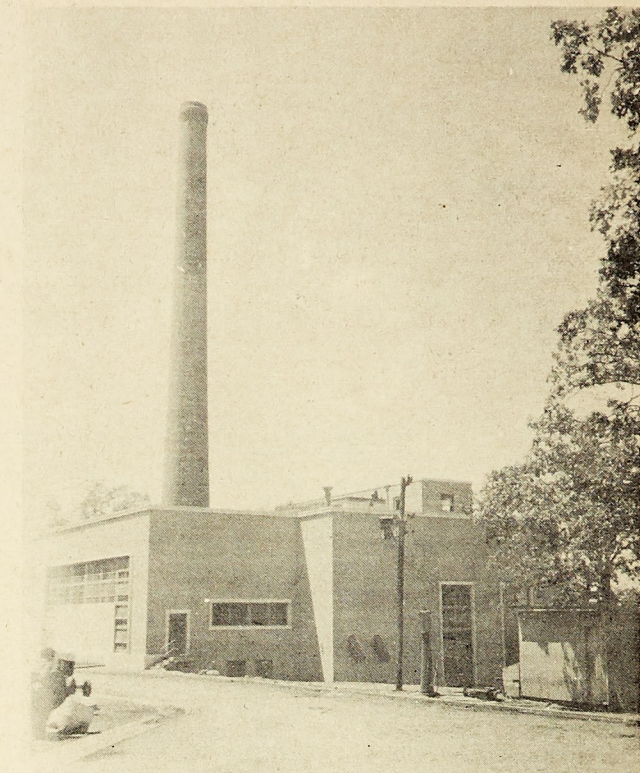
The new boilers are arranged for complete automatic control with Republic instruments and controls. This automatic equipment includes the master controller, stoker regulator, air or draft regulator, steam flow-air flow regulator, and furnace pressure regulator. Any change in load demand is detected by a change in steam pressure; the automatic equipment then causes proper readjustments of air supply or forced draft, adjustments of stoker feed by means of the Reeves variable speed transmission for stoker control, and adjustments of the boiler feed by means of the Bailey automatic boiler feed regulator. Various Bailey and Republic meters record smoke density, steam pressure, uptake draft, furnace draft, over-fire draft, and draft at various points in the furnace.

The automatic steam generation control equipment is of the pneumatic type, the air supply for its operation coming from a Quincy air compressor driven by a Century 5 H. P. induction motor. A new air compressor for supplying compressed air for the campus system will be installed and connections arranged for emergency use of this supply for controls in case of failure of the special supply for the automatic control system.

New Water Treatment System

A feature of the new plant not used in the old plant is the water treatment system. Two Union Steam Pump Company vacuum pumps, located on the floor beneath the turbine room floor, pick up the returns from the campus heating system and pump into the surge tank on the main boiler room floor. Duplicate pumps then transfer the water to the water softener tank where the water is reduced to zero hardness, the treatment taking place at a temperature of 230 degrees Fahrenheit. The raw make-up water from the campus water supply has an initial hardness of 14.5 grains. The treatment system is a combination of lime, sodium aluminate, and soda ash.

Following the water treatment process, the water is



The New Power Plant

transferred by duplicate pumps to the heater tank where the boiler feed water is treated to about 250 degrees Fahrenheit by using live steam. In the future, after the turbines are installed, the boiler feed water will be heated from steam bled from lower stages of the turbines. Duplicate boiler feed pumps transfer the water from the heater tank to the boilers through the Bailey automatic boiler feed regulator previously mentioned. One boiler feed pump is driven by a Worthington steam turbine while the other is driven by a 25 H. P. Continental induction motor. The boiler feed water system is equipped with high and low water alarm, and a low water cut-off valve.

The draft system is a combination of natural draft supplied by a new smoke stack 175 feet high, and forced draft supplied by duplicate Sturtevant Silent-vane fans driven by 75 H. P. General Electric induction motors. The new stack has a tile lining for 75 feet to prevent too rapid expansion and contraction. Its foundation extends to solid rock.

The coal supply for the plant will be brought by trucks, dumped into a hopper or coal pit and fed into a vertical bucket conveyor operating through a penthouse above the roof level. This conveyor will empty into a steel bunker having a storage capacity of 350 tons. There will be no coal preparation equipment, the coal purchased being of proper stoker size. From the bunker the coal will feed through bunker valves into a travelling weighing larry and thence into the automatic stokers. The contract for these conveyors has not yet been awarded so that at present coal is conveyed to the stokers by hand labor and a wheel barrow.

The ashes pass from the stokers to the ash pits at the rear of the boilers. Here the ashes will be pulled

THE CAMPUS

to an ash conveyor which will operate in a tunnel from the south to the north ends of the building. From the conveyor the ashes will be delivered to an elevator which raises and dumps them into an ash storage bin which is provided with two hoppers for dumping into trucks. Provision will be made for weighing out the ashes. The contract for the ash conveyors also has not yet been awarded so that at present the ashes are carried up from the tunnel by hand labor and a bucket and removed in a wheel barrow.

The power plant building has dimensions of 96 feet by 92 feet with height from basement floor to main roof of 38 feet. It is of reinforced concrete, brick and structural steel type of construction. The exterior is of light buff colored brick with Carthage stone trim around the windows, stone base courses and copings. Large steel frame windows of the pivoted type provide ample light and ventilation; the ground floor and walls up to outside grade are water-proofed; the roof is of pre-cast concrete slabs with tar and gravel roofing; the foundations for the building were carried to solid rock.

Funds for Power Equipment

Funds have recently been appropriated for power equipment but contracts have not yet been awarded. The turbine room is arranged for an ultimate capacity of three units of 500 Kva each, the first two units to be installed at the north side of the turbine room and in the middle position. In the basement of the south position two Cooper Bessemer Diesel engine-units of 375 H. P. each have been installed for use until the steam turbines are available. These Diesel units were a donation from navy surplus; the 250 Kw generators had to be rewound for standard voltage of 2400 volts. Used bus and switchboard equipment for the Diesel units has been obtained and is being rebuilt and installed.

At present the campus power producing facilities consist of the Nordberg High Efficiency Engine, installed in June 1922, and driving a 180 Kva, 2300-volt generator; a Cummins 150 H. P. Diesel driving a 100 Kw generator; a Cummins 75 H. P. Diesel driving a 50 Kw generator; and a 150 H. P. Superior Diesel driving a 100 Kw generator. The generator of the Superior Diesel units of such voltage rating that it cannot be operated in parallel with other generators, thus it is used only to supply power for the equipment in the School cafeteria. The peak load for the campus power system has been about 425 Kw, part of which has been supplied from the Rolla Municipal Utilities. The future peak load, including additional temporary class-room buildings now nearing completion, is estimated as about 550 Kw.

Installation Is Delayed

An appropriation for a turbine-generator unit has been approved; however, immediate installation is impossible because of the long-time delivery period for such equipment. When two 500 kva turbine units are installed, as has been planned, they may be used to carry the base-load, and the Diesels used to assist in carrying the peak load; this would permit carrying the campus peak demand on one turbine unit and one 250 Kw Diesel unit, thus permitting the other steam-turbine unit and 250 Kw Diesel unit to be taken out of service for repairs when necessary.

This power plant project has been carried on through the following contracts: McCarthy Brothers Construction Company of St. Louis had general contract for the building structure; the Industrial Heating and Plumbing Company of St. Joseph had contract for steam fitting and plumbing; the H. Chapline Electrical Company

of St. Louis had contract for electric wiring; the Alphons Custodis Chimney Construction Company of Chicago had contract for the smoke stack; the Babcock and Wilcox Company of Barberton, Ohio had contract for the steam generating equipment; the Republic Flow Meter Company of Chicago had contract for automatic boiler control equipment.

The architects for this project are: Rathmann, Koelle and Carroll of St. Louis. The consulting mechanical engineer is John D. Falvey, and the consulting concrete design engineer is William C. E. Becker both of St. Louis. J. M. McCarthy, who was graduated in Civil Engineering at Missouri School of Mines in 1920, is a member of the firm of McCarthy Brothers, mentioned above.

This new Power plant when completed will provide adequate heat, light and power facilities which undoubtedly for years has been the most urgent need on the M. S. M. Campus.

Pi Kappa Alpha

(Continued From Page 8)

winning three weights. Dale Stone led the way by winning a decisive victory in the 175 & weight division even though it was one class over his weight.

The school's 75th anniversary filled the house with many old alumni who had not tread the halls of Pi K A for three years. An outstanding alumni who returned for a visit was J. P. Gill, '18 vice president of Pittsburgh Steel Co. While here Mr. Gill received an honorary Doctor's degree in metallurgy.

The house has gone through some extensive redecoration in the past year. The boys of the summer, '46, session with the supervision of an experienced painter gave the house a complete outside coat of paint. With the return of a full house in September, a paint job was performed on the entire first floor. A living room set was purchased and covers for the first floor furniture were presented to the house by our active mothers club.

Due to overtaxed housing conditions in Rolla and a record number of men in the house, it was decided that the downstairs game room be converted to a study room and the chapter room converted to a dormitory. With this added space the house was able to maintain a normal pledge class. Arrangements are being made to accommodate the return of the fellows for the fall semester.

Though the war may have caused an interruption in Pi K A's progress she has once again, through the able assistance and advice of our faculty advisor G. C. Boyer, Gamma Kappa, gained a firm foothold as well as added prestige on the campus of MSM.

St. Louis Alumni Have Luncheon

Miners in St. Louis got together on August 1 for lunch at Schumacker's. It was decided to continue these luncheon meetings once a month on Fridays at noon. The date for the next get-together will be Friday, September 5, at Schumacker's at 11:45.

The following Miners attended: Art Schwarz, '32, George Pitts, '39, John Sault, '39, Bill Oberbeck, '39, George Mitsch, '40, P. T. Dowling, '40, L. J. Stohldrier, '41, W. N. McArdle, ex '44, Charles Morris, '39, Don Brand, '44, Ben Einspanier, '47, and Steve Salarano, '47.

MISCELLANEOUS

Seven Alumni Committees Confirmed by Directors

The Alumni Association has seven committees, appointed by President Hasselmann and confirmed by the Board of Directors, which serve the association and the school.

These committees and their members are:

Athletic committee: F. E. Dennie, chairman, C. A. Durphy, James Glover, O. K. Holman, H. J. Pfeifer.

Curricula and research: Enoch R. Needles, Chairman, D. G. Gibson, J. F. Hosterman, and Harry H. Kessler.

Finance committee: C. Cabanne Smith, chairman, F. R. Loveridge, Gunnard E. Johnson, Warren E. Ten Eyck, J. H. Steinmesch.

Membership committee: Hans Schmoldt, chairman, A. E. Barnard, E. A. Crawford, L. E. Grafft, Barney Nuell.

President's visiting committee: H. E. Zoller, Neal Ham, Edgar C. Long, Daniel Kennedy, Walker E. Case, Robert C. Weigel, G. C. Cunningham, Mervin J. Kelly, and George Mellow.

Public relations: William M. Taggard, Charles A. Freeman, J. Pemberton Gordon, J. K. Richardson, Carl G. Stifel.

The nominations committee will be appointed at the next Board meeting.

New Chapter of Keramos Has Seventeen Initiates at MSM

Keramos, honorary national professional ceramics fraternity, was installed at MSM on July 26. Selection of the seventeen members was based on scholarship, ability and interest in ceramic work.

The installing team consisted of Prof. C. M. Dodd, chairman of the Ceramics department at Iowa State College and former chairman of the department at MSM, Dr. A. I. Andrews, of the University of Illinois, Dr. S. R. Scholes, Alfred University, Prof. H. G. Beckemeyer of Iowa State, and Dr. P. G. Herold, chairman of the department at MSM.

A banquet was held after the initiation ceremony, at the Houston House in Newburg. Speakers for the occasion were Prof. Dodd, Dr. Scholes, and Assistant Dean Rex Williams, who spoke on behalf of the school.

McDonald's Essay Is Winner Of 1947 Steinmesch Award

"Mac" McDonald, '48, won the Steinmesch Award with his essay, "Freezing Process As Used in Sinking Shafts in Water-Bearing Strata." This award is contributed by J. H. Steinmesch, '06, vice-president and general manager of the Minerva Oil Company.

According to "Mac," the water-bearing strata is consolidated by pumping refrigerated brine through pipes sunk around the shaft site. The shaft can then be sunk through this frozen area without cave-ins.

The essay has been resubmitted by the AIME to the national essay contest.

Homecoming

(Continued From Page 1)

the various department chairmen from the faculty. At this time the Visiting Committee will offer suggestions as to improvements that might be made at MSM as a result of their inspection of the departments.

The Alumni Committee working on homecoming plans are Charles Freeman, '28, Chairman, A. E. Barnard, '27, and Jim Stephens, '47. The Faculty committee consists of Assistant Dear R. Z. Williams, '37, Professors R. F. Davidson, '41, J. F. Rushing, '40, C. J. Thorpe, '35, and D. F. Walsh, '23.

Lambda Chi Alpha

(Continued From Page 8)

finished as was the kitchen extension which eased the situation greatly.

Along with the troubles of readjustment were the good times. As the spring snows came, the snowball fights with the high school students were resumed with the usual resulting casualties. Next came St. Pat's with many of our alumni brothers in attendance. The spring semester was closed with the annual Senior Farewell with eight brothers graduating and taking their places in industry. Although the chapter is not active on the campus this summer, it will see the farewell in August of seven more members who are terminating their college careers.

Even though many of the brothers have graduated recently or will graduate soon, it is expected that the active chapter will gradually level off to about 40 members. This is still above the capacity of the present building and although many of us are firmly attached to the "Little Red Playhouse" it is clear that a new and better house is needed. Plans are now on the fire for completely tearing down the present building and building anew. These plans are being necessarily held up due to high cost of material; so it will probably be several years before anything definite is done.

I would like to conclude with a few interesting side-lights. Brother Bill Schuerman did a wonderful job on the rejuvenation of a large leather crest presented to the house by brother Jim Wylie. This crest is the one which hung in the chapter house at Boston University where our fraternity was founded. It is now mounted upon white lamb skin and hangs in a frame in the chapter room. Brother Gene Nevin has joined the faculty as a drawing instructor while he is working on his master's degree. The house officers for the coming year are: Dixie Walker, president, Gordon Moline, vice-president, John Reilly, secretary, and Stan Hrach, treasurer.

ALL THINGS CHANGE

For reasons beyond control of the editors, it has been necessary to change printers and methods of printing. The reaction of the alumni to this change would be appreciated. Let us know what you think of the new issue.

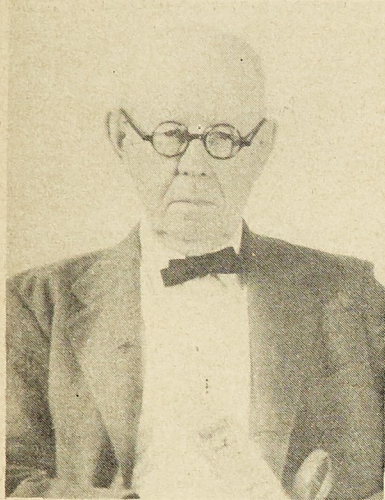
The Editors

ALUMNI MILESTONES

DEATHS

William Rock Painter, '82, Former Lt.-Governor Dies

William Rock Painter, '82, one of the oldest graduates of the School of Mines, died July 1 at his home in Carrollton, Missouri. He was known throughout Missouri as a newspaper man, public servant, and an outstanding citizen.



William R. Painter

After he was graduated from the School of Mines in 1882 with a degree in Civil Engineering, "Governor" Painter spent two years mining in the Colorado district. In 1885 he returned to Missouri and was elected County Surveyor of Carroll County and in 1892 became editor and publisher of the Carrollton Democrat, which position he held at the time of his death.

For over fifty years "Governor" Painter was active in public affairs in Missouri. He was a member of the Board of Managers of the Missouri School for the Deaf at Fulton from 1903 to 1909, past president of the Missouri Press Association, and a member of the Carrollton School Board.

He was elected Lieutenant Governor of Missouri in 1912; hence the name "Governor" to which he has answered ever since. After serving four years as Lieutenant Governor he became chairman of the state prison board. A former State Senator, he was president pro tem of the Senate from 1923 to 1925, and majority floor leader in 1927.

Mr. Painter was appointed a member of the Eleemosynary Board in 1927 later becoming Chairman of the Board. State hospitals and institutions have always been one of his greatest interests.

He returned to Rolla last fall to celebrate the Seventy-Fifth homecoming.

"Governor" Painter is survived by two daughters, Mrs. E. F. Salisbury of Kansas City and Mrs. Hudson Cooper of Carrollton.

Frank H. Seamon

Word has been received of the death of Franklin H. Seamon, '91, on November 10, 1945 of a heart attack. He was born March 28, 1870 in Wheeling, West Virginia, and received his E. M. from MSM in 1891. He was Professor of Geology and Chemistry at Texas School of Mines for a number of years. At the time of his death Mr. Seamon resided at Laguna Beach, California.

Joseph Gray Umpleby

Joseph Gray Umpleby, '36, mechanical and petroleum engineer for the American Petroleum Institute, passed away June 9. Gray received his degree in Mining Engineering in 1936 and worked for the Gypsy Oil Company for several years following graduation. For a short time he was Assistant Professor of Petroleum Engineering at the University of Tulsa, and at the time of his death was working for the American Petroleum Institute. His home was at 4237 San Carlos Drive, Dallas, 5, Texas.

Harvey Edson Smith

Harvey Edson Smith, '10, died November 6, 1939 of a brain hemorrhage. A member of Pi Kappa Alpha and Tau Beta Pi, he was also active on the Rollamo Board and in the Miners' Minstrel while at MSM. He received his B. S. in Mining Engineering in 1910 and his E. M. in 1914.

Stanley M. Hayes

Stanley M. Hayes, '22, died February 28, 1947. At the time of his death he was associated with the Engineering Division of the Reconstruction Finance Corp., in Kansas City, Missouri. Stanley was a member of Theta Tau.

Louis W. Ehlers

Louis W. Ehlers, ex '17, died in Phoenix, Arizona on December 2, 1934 of tuberculosis. He had been with the Shell Oil Company for many years.

WEDDINGS

Shivelbine-Freeman

Miss Louise Freeman of Rolla and Bill Shivelbine, '44, were married July 24 at the Lutheran Immanuel Church in Terre Haute, Indiana. The bride was St. Pat's Queen at the annual St. Pat's celebration last March. Bill received his Master of Science degree in Chemical Engineering this spring and is working in Marshall, Illinois, where the couple will make their home.

Clark-Clark

Miss Ruth Clark was married to Lt. Willis H. Clark, ex '44, on June 7 at Northampton, Mass. Lt. Clark graduated from the U. S. Military Academy at West Point on June 3 and was commissioned a 2nd Lieutenant in the U. S. Army Ordnance Department. The Clarks can be reached at 2307 Warner Rd., Fort Worth, Texas.

Larson-Rogers

Miss Priscilla Jean Rogers of Belmont, Mass., became the bride of Warren L. Larson, '44, on June 21 at the First Baptist Church in Belmont. The ceremony

(Continued on Next Page)

ALUMNI MILESTONES

Weddings

(Continued From Preceding Page)

was performed by the Rev. Leonard J. Larson of Kansas City, Missouri, father of the groom.

The bride graduated in June from Lesley College in Cambridge, Mass. Warren served in the Navy after graduation from MSM and was released last year as a Lieutenant (jg). He recently received his Master's Degree in Metallurgy from the Massachusetts Institute of Technology, specializing in Foundry. He is employed in the Foundry Division at M. I. T. for the summer, and will continue his studies for a doctorate in the fall, having received a fellowship from the Steel Founders' Society of America.

After a week's honeymoon at Dennisport, Cape Cod, Mass., the Larsons are at home at 13 Prince Street, Belmont, Mass.

Plenge-Washburn—Thorne

Miss Angelica Thorne and Carlos H. Plenge-Washburn, '40, were married in Miraflores, Lima, Peru, in May.

Lampe-Miller

Miss Dorthea Lee Miller of Portageville, Missouri, and Ivan Ben Lampe, '47, were married on July 6 in Lemay, Missouri. The former Miss Miller graduated this spring from Southeast Missouri State College at Cape Girardeau. Ivan, a member of Sigma Pi fraternity, received his B. S. in Chemical Engineering on June 3 and is working for the Titanium Division of the National Lead Company in St. Louis. They are living at 4481 Westminster, St. Louis, Missouri.

Silhavy-Gormley

Miss Bonnie Lee Gormley became the bride of Captain Robert C. Silhavy, '41, United States Army, on June 4 at Our Lady of Lourdes Cathedral in Spokane, Washington. Bob is a member of Kappa Alpha fraternity and has served in the Army since graduation.

Fort-Reeves

Miss Mary Anne Reeves and George E. Fort, '40, were united in marriage on July 5 in Ulysses, Kansas, at the home of the bride. Mrs. Fort is a graduate of Kansas State College where she was a member of Alpha Xi Delta sorority. George is a Lambda Chi Alpha and served three years during the war as a flight engineer with the original B-29 bomber group. He is now district engineer for the Stanolind Oil Company for the southeastern states. After a short wedding trip the couple returned to Shreveport, La., where they will make their home.

**Come to Rolla for
Homecoming on Nov. 8**

BIRTHS

Mr. and Mrs. Walter Braun, '33, announce the arrival of Susan Knapp who was born May 18. The Brauns live at 732 Milford Mill Road, Pikesville, 8, Maryland.

A son, Mark Howard, was born June 6 to Mr. and Mrs. Gilbert Blankenship, '42. Gilbert is a geologist with the Pure Oil Company in Midland, Texas.

Carol Jane Nevin was born May 9 in St. Louis, Missouri. Her parents are Mr. and Mrs. James R. Nevin, '42, of 4263 Westminster, St. Louis.

Mr. and Mrs. Joe F. Carroll, '38, of Pittsburg, California, announce the birth of a son on July 28.

Class Reporter Receives Several Recruits to Alumni Association

1916

James L. Head, Correspondent
Room 1726, 25 Broadway
New York 4, N. Y.

The job of Class Correspondent is not without its compensating features. The pleasure of hearing from classmates seems to increase proportionately with respect to the years since undergraduate days. My notes in the May-June issue prompted a letter from the inimitable John J. Doyle. Jack keeps threatening to turn up in New York City. He now thinks it may be in September enroute to Europe. Probably going over to return the original Blarney Stone he made off with on March 17, 1915 when he was our Class' St. Pat.

The news is not always good. Among those whom I had listed as missing was Louis W. Ehlers. I now have the sad intelligence that he died in Phoenix, Arizona, on December 2, 1934. Why didn't some of us know about it long before this? "Mike" was a charter member of Theta Tau, and my informant as to his death was Mr. E. J. Schrader, University of Minnesota, '05, the founder of Theta Tau and its perennial Grand Scribe. Mr. Schrader receives our Alumnus regularly and as regards his interest in it, sets something of a mark for more of our own graduates to shoot at.

It is good to know that more 1916 men have joined the Association. Since my May-June listing of twenty-three names, I find that newcomers to the ranks are—Earl Deutman, Hugo Koch, Harold Neustaedter, Louis Turnbull and Walter Kiskadden. The latter will, of course, be remembered as the star quarterback of the famous 1914 team.

Tulsa Group Has Picnic

The Tulsa Section has continued its weekly luncheons, which are held in the "Bit of Sweden" Restaurant. These luncheons have been well attended.

There have been no meetings recently but several members and their families attended a picnic which was held at the home of Mr. J. N. McGirl, '22.

ALUMNI PERSONALS

Classes 1899 to 1909

1899

Howard J. Taylor and his wife were visiting in Rolla June 12. They were on their way to Seattle, Washington, where they plan to make their home. While in Rolla the Taylors visited Mrs. Anna Howerton, who was bridesmaid at their wedding 48 years ago. Mrs. Howerton is the mother of Joseph, '38. "Josh" recently retired from the Public Roads Administration after working with them for 27 years. Mail will reach him at 6707 Phinney Avenue, Seattle 3, Washington, c/o Mrs. M. C. Reaber.

1901

DeNard W. Buckby was a campus visitor recently. His home is in Seattle, Washington, at 208 West 52nd Street.

Tom L. Gibson, ex '01, visited friends in Rolla on June 22. Tom lives in Friars Point, Mississippi, at 9964 Sessions Avenue.

1903

Walter A. Luther is assistant superintendent of the O. B. Andrews Company of Chattanooga, Tennessee.

1904

Evan E. Price gives his mailing address as Box 586, Durango, Colorado.

John M. Price can be reached at Centerville, Idaho.

1905

E. E. Squier, ex '05, can be reached at Montpelier Apts., 25 Green Ave., Madison, New Jersey.

1907

William C. Perkins' mailing address is P. O. Box 1689, C/O CAA, Ft. Worth, 1, Texas.

James C. Long is a mechanical engineer with offices at 2511 Hearst Avenue, Berkeley, 4, California.

1908

H. A. Johnson is superintendent of the Tonopah Mining Company.

R. R. Benedict's address is 1515 N. Harrison, Arlington, Virginia.

John H. Bowles lives in Lake Spring, Missouri.

1909

Classes 1910 to 1922

Hammond Ladd visited the campus on August 1. He is chief engineer for the United Parcel Service, 331 E. 38th Street, New York, New York.

1910

John D. Harlan recently moved to 2017 5th Avenue N., Seattle, 9, Washington.

1911

Monroe Farrar's address is R. R. No. 4, Mattoon, Illinois.

1913

E. C. McFadden, Ex-'13, was on the campus July 18 with his son, Hugh, to arrange for the latter's entrance in MSM for the fall semester. It was Micky's first visit to the campus since he left in '13. He spent the day visiting with friends and former classmates, including Howard M. Katz, Spike Dennie of the faculty, and others. Mickey was much impressed with the progress MSM has made since he left school.

1914

L. J. Boucher has recently been appointed plant manager of the Universal Atlas Cement Company plant in Northampton, Pa. His home address is 500 American St., Catasauqua, Pa.

1915

John S. Brown is chief geologist for the St. Joseph Lead Co., of Bonne Terre, Missouri.

George B. Wilson is assistant city engineer in the City Engineering Department, East St. Louis, Illinois.

1917

Harold E. Spickard, ex '17, is in the Office

of the District Engineer, Corps of Engineers, P. O. Box 5180, Metro Station, Los Angeles, 55, California. He was in Nicaragua as chief engineer of the Pan American Highway from 1942 to 1944.

1920

Joseph Novak, Jr., lives at 2215 Jules, St. Louis, 4, Missouri.

John L. Howendobler is president of the Imean Company. John lives at 1612 Daly, Los Angeles, 37, California.

Daniel C. Beyer is manager of the Livengood Placers, Inc., Livengood, Alaska.

1921

E. L. Miller, Jr., is teaching at the North Carolina State College of Agriculture and Engineering at Raleigh, North Carolina. Mail will reach him at Box 5606, Raleigh.

1922

Glen J. Christner is the Eastern Manager of the Eagle Picher Company, 420 Lexington Avenue, New York, New York. He lives in Garden City, New York at 119 Wickham Rd.

Thomas G. Weir is Northwest Manager for the Joy Mfg. Company. Tom's mailing address is Seattle, 4, Washington.

Irwin W. Alcorn, chief production engineer, Pure Oil Company, Houston, Texas, has been nominated as the 1948 Chairman of the Petroleum Division, AIME.

H. F. Shore was a campus visitor on July 25 and 26. Red is secretary of the Independent Exploration Company, Houston, Texas, his address being 901 Esperson Building, Houston.

Classes 1923 and 1924

1923

Harry Pence spent Memorial Day in Rolla and visited the campus to discuss alumni affairs with Dean Wilson and other school officials.

Charles M. Lancaster was on the campus May 15 with his son who is entering MSM next fall. Charlie is employed by the Missouri State Highway Department and his home address is 502 Vista Place, Jefferson City, Missouri.

Harry C. Loesche is with the U. S. Bureau of Mines, 428 Acheson Bldg., Berkeley, 4, California.

H. J. Schiermeyer was visiting the campus on June 12 with his nephew who plans to enroll at MSM this fall and his son, Harry, Jr., who will start at MSM the fall of 1948. Harry is district maintenance engineer with the Illinois Division Highways. His home address is Edwardsville, Illinois.

Raymond E. Murphy left June 22 for three months of geographic field work in the eastern Caroline Islands. His major work is a detailed study of the differences between the human geography of a volcanic island, Kusaie, and that of a nearby atoll, Pingelap. Both of these island lie at about 50 or 60° N. Latitude. This work that he is doing is sponsored by the National Research Council with the cooperation of the Navy and is one of a number of scientific studies to be carried on throughout Micronesia. Ray is Professor of Economic Geography in the Graduate School of Geography, Clark University, Worcester, 3, Mass.

Felix Z. Meeks is retired and is living in Jacobson, Minnesota.

Lynn Harbison is manager of the service laboratory of the Phillips Petroleum Company, of Akron, Ohio.

1924

Peter F. Thompson is district superintendent of the Utah Power and Light Co., of Grace, Idaho.

Wilford S. Wright is living at 512 S. Solano Avenue, Albuquerque, New Mexico.

Arch W. Naylor is living at 1962 S. Point View, Los Angeles, 34, California.

Guy R. Scott is working for Black and

Veatch, Consulting Engineers. He resides at 215 W. 68th St., Kansas City, Missouri.

Classes 1925 and 1926

1925

Hugh R. Berry visited in Rolla for several weeks during the latter part of June. Hugh was visiting his daughter and son-in-law, Mr. and Mrs. Paul Carroll, and is now a grandfather, as the Carrolls are the parents of a baby boy born June 20. His son-in-law is a student at MSM. Hugh is with the Asiatic Petroleum Company in New York City.

Louis A. Oberly who is with the Hartford Rayon Corporation, lives at 5 Elm Street, Cromwell, Connecticut.

William H. Bush is structural engineer with the Public Buildings Administration. He resides at 5431 Branch Avenue, S. E., Washington, 20, D. C.

Joseph O. Hunt is with the Universal Atlas Cement Company in Gary, Indiana.

Thomas M. Thompson lives at 10530 S. Aberdeen, Chicago, 43, Ill.

K. O. Alexander is now living in San Carlos, California at 112 Calton Avenue.

Frank N. Strong, Rt. No. 2, Springfield, Missouri, was visiting the campus May 28 with his son, Jack, who enrolled in the summer session of the School of Mines.

Carl J. Heim is a consulting engineer in Jasper, Indiana.

1926

Daniel Kennedy spent some time on the campus the week of June 9 inspecting the Civil Engineering Department as a member of President Hasselmann's Visiting Committee. Dan is chief of operations and planning and chief topographic engineer of the army map service in Washington, D. C. His home address is 4444 Faraday Place.

E. M. Lindeau has returned from Venezuela where he was searching for iron deposits for the Oliver Iron Mining Co. He is located now at Thunderbird Ranch, Tucson, Arizona.

Ray E. Kollar is general sales engineer with Dowell Inc., Tulsa, Oklahoma.

Daniel B. Jett is Dean of Engineering at the New Mexico College of Agriculture and Mechanic Arts at State College, New Mexico.

Lt. Col. R. Dryden Hodge is serving in the regular army as executive officer in the Research and Development Branch of the Military Planning Division, Office of the Quartermaster General, Washington, D. C. Dryden's home address is 5616 Glenwood Rd., Bethesda, 14, Maryland.

Roy E. Keim, '26, gives his address as Box 567 Welch Cove, N. C. He is employed by the Tennessee Valley Authority.

Class 1927 to 1929

1927

Edwin R. Sievers is chief of surveys and maps of the U. S. Forest Service, Missoula, Montana.

Roy J. Gunther, who is with the Frazier-Davis Construction Co., lives at 48 Rutland St., Mt. Kisco, New York.

W. A. McCanless resides at 17 E. 17th St., Merced, California.

George J. Borgstede lives at 3139 Ronald Drive, Overland, 14, Missouri.

Edward R. Cushing, who lives at 909 Elmwood Avenue in Evanston, Illinois, is working for the S. A. Healy Company in Chicago.

Ralph E. Hilpert lives in Modesto, Illinois.

1928

Edward C. Miller, following his discharge from the Navy with the rank of Commander, has returned to Purdue University on their instructional staff. His home address is Bldg. 12, Apt. 6, Ross-Ade Drive, West Lafayette, Ind.

July - Aug, 1947

ALUMNI PERSONALS

Charles L. Kitchen, ex '28, is employed by the Wisconsin Steel Company. He resides at 7015 S. Michigan Avenue, Chicago, Illinois.

Henry E. Gross, who lives at 1141 S. Elm Avenue, Webster Groves, Missouri, owns the Gross Maps and Guides store in St. Louis.

Mark B. Layne is construction engineer for the L. F. Harper Construction Company of Logan, Kansas.

Ervin G. McLauchlan is division engineer for the Consumers Power Co., Hastings, Michigan.

Thomas D. Murphy is working for the Industrial Silica Corporation. Tom's address is 185 Wildwood Drive, Youngstown, 7, Ohio.

1929

Arthur H. Kemp, Jr., was on the campus June 17. Art was en route to Michigan on business for his company, Gulf Oil Corp. of Tulsa. His home address is 931 Quebec St., Tulsa, Okla.

H. L. Harrod is plant superintendent for the Harbison-Walker Co., Box 501, Fulton, Missouri.

Dana W. Smith, ex '29, is head of the Metals Division, Engineering Department of The Glen L. Martin Co., Baltimore, 3, Md.

Orville W. Morris is combustion engineer for the American Rolling Mills Company. His home address is 911 Edgewood, Ashland, Kentucky.

Frank A. McCurdy gives his mailing address as Rt. No. 2, Bethel, Kansas.

Thomas W. Rubottom is steam engineering and service supervisor of the Westinghouse Electric Corporation, 612 Petroleum Bldg., Houston, Texas.

Russell C. Miller is employed by the Leeds and Northrup Co., in Chicago. His address is 1131 Oak Avenue, Evanston, Illinois.

Philip H. Delano is resident engineer of the E. J. Lavino and Company, Plymouth Meeting, Pa.

Harry C. Page is head of the Patent Department of the Brush Development Co., Cleveland, Ohio. He resides at 1299 Ethel Avenue, Lakewood, 7, Ohio.

Classes 1930 to 1932

1930

Edward Meeka is ceramic engineer and plant superintendent for the Robinson Brick and Tile Co., in Denver, Colorado. Ed lives at 336 Clarkson in Denver.

Major Harry F. Kirkpatrick gives his address as 100th AAF BU, Mitchell Field, L. I., New York.

Donald J. Bisett, ex '30, has his office at 414 Ritz Bldg., Tulsa, 3, Oklahoma.

Lt. Commander Ralph L. Wright is Public Works Officer at the U. S. N. O. Plant, Pocatello, Idaho.

George F. Heath is president of the George F. Heath Company, Manufacturers' Representatives, 4030 Chouteau Avenue, St. Louis, 10, Missouri.

1931

Ralph C. Graham writes that he has been getting much enjoyment out of reading the "Alumnus" magazine. He is head of the Geological Department of the Tennessee Gas and Transmission Company in Houston, Texas. Ralph has sons David, 3½, and Robert, 6 months. The Grahams live at 3806 Rosedale in Houston.

1932

Arthur S. Macke is mine superintendent of the Copper Range Company of White Pine, Michigan.

Oliver P. Hunt is working for the U. S. Geological Survey in Albany, New York.

J. Russell McCarron is district manager of the Vanadium-Alloys Steel Company, Philadelphia, 3, Pa. Russell moved in July to 140 Barcladen Rd., Rosemont, Penn.

Arthur C. Kroll lives in Chicago, Illinois at 9749 S. Ellis St.

Al Happy is senior public health engineer for the State Division of Health of Missouri. He lives at 319 Washington St., Jefferson City.

Manuel J. Grillos is working in Laramie, Wyoming where he is foreman for the Monolith Portland Midwest Company.

Joseph E. Stevens is general manager of the Murray Refractories Co., Murray, Utah.

Classes 1933 and 1934

1933

O. C. Garst visited in Rolla in June after his return from Vienna, Austria. He is with the War Department and his next assignment is Tokyo, Japan.

Thomas V. Cummins can be reached at Box 133, Rolla, Missouri.

Russell Edgar was a visitor in Rolla the early part of June. "Wuss" was on a vacation part of which he spent in Arkansas and the rest in Rolla visiting his mother. He is employed by the National Zinc Co. in Bartlesville, Oklahoma. His address is 1421 South Oak St., Bartlesville.

Hinton C. Marks is assistant petroleum engineer for the Texas Company in Houston, Texas. Mail will reach him at 402 E. Cowan Drive, Houston, 7, Texas.

Harry Federow is a partner in the Federow Iron and Metal Co., in Springfield, Missouri. Harry resides at 1123 S. National Blvd., in Springfield.

John O. Farmer is associated with Jones, Shelburne and Farmer, Inc., of Oklahoma City, Oklahoma.

Harry G. Hedges is working as a civil engineer in the U. S. Engineer Office in Memphis, Tennessee.

Marcellus G. Handly is district manager of the Gardner-Denver Co., Birmingham, Alabama. He lives in Homewood, Alabama at 710 Forrest Drive.

J. Douglas Martin is with the Geophysical Research Corporation, 2607 N. Boston Place, Tulsa, Okla.

Arthur P. Towell is chief inspector of the Shell Chemical Corp., Box 2527, Houston, Texas.

1934

Otto L. Nuernberger is production superintendent in the Cabimas Field employed by Shell Oil Company in Venezuela. Otto's mailing address is Caribbean Petroleum Co., Maracaibo, Venezuela, South America.

Walter H. Bruening, who lives at 1620 North Smelter, Pittsburg, Kansas, is master mechanic for the Kansas City Southern Railroad.

Ralph A. Tiemann is methods engineer for the Plomb Tool Company in Los Angeles. Ralph resides at 10936 Riverside Drive, North Hollywood, California.

Jim Meacham is district geologist for the Humble Oil and Refining Company, Route No. 1, Raymondville, Texas.

Roy E. Swift is working on his Ph. D. degree at Yale University. His address is 2 Read Street, New Haven, 11, Conn.

Ed Kozeny is chief engineer and vice-president of the Lambert Engineering Co., St. Louis, Missouri. Ed's mailing address is 9307 Althea, Afton, 23, Missouri.

Lester E. Poese who lives at 767 S. Mason St., Harrisonburg, Virginia, is associated with the Merck & Co., Inc., Elkton, Virginia.

Classes 1935 and 1936

1935

John E. Harrod is working for the Carnegie-Illinois Steel Corp. in Chicago. John's home address is 7808 Phillips Avenue, Chicago, 49, Illinois.

William C. Snyder who lives at 1643 Monitor Avenue, Chicago, Illinois, is working for the Frabimer Equipment and Controls Co., Inc.

William R. Burgoyne is with the United

States Gypsum Company in Chicago. Bill lives at 430 Winnetka Avenue, Winnetka, Illinois.

William A. Howe lives in Pittsburgh, Pa. at 6416 Jackson St.

Bill Snyder is one of the organizers of the Frabimer Equipment & Controls Co., Inc., 5235 North Avenue, Chicago, 39, Illinois. Bill writes that he feels Chicago has "a fine and active Alumni Chapter."

1936

William H. Schwalbert was on the campus with his family on June 27. Bill was on a vacation trip with his wife and two boys, Greg and Russell. He is an engineer with the Toledo Edison Company in Toledo, Ohio. His home address is 3824 Maxwell Rd., Toledo.

R. T. Chapman can be reached at PO Box A-79, Port-au-Prince, Haiti.

Hilbert F. Michel's mailing address is P. O. Box 300, Ft. Lincoln, Bismarck, North Dakota. James H. Menefee's new address is P. O. Box 648, Colorado Springs, Colorado.

Anthony V. Massaro is working as an electrical engineer for the City Water Light and Power in Springfield, Illinois.

Neil Plummer is working in the Utah Copper Division of the Kennecott Copper Corporation. Neil's home address is 936 Diestel Rd., Salt Lake City, Utah.

Herman J. Pfeifer lives in Chicago at 635 E. 84th St. He is with the Electro-Metallurgical Sales Corp.

Jack R. Clanton is Assistant Professor of Civil Engineering at the University of Washington in Seattle.

Carl T. Millice, Jr., who lives at 611 E. Lemon, Glendora, California, is chief mining engineer for the Filtrol Corporation in Los Angeles.

Classes 1937 and 1938

1937

Millard K. Smart is with the Ordnance Research Lab. at Pennsylvania State College in State College, Pa. He resides at Route No. 2, Spring Mills, Pa.

Harry C. Berger has moved from Calumet City, Illinois to Houston, Texas where he is employed by the Hewtux Drilling Company.

Glen N. Hackmann is a civil engineer with the U. S. Atomic Energy Commission, Oak Ridge, Tennessee.

J. J. Sheppard is living at 204A Ridge Rd., Bauxite, Arkansas.

O. K. Holman is chief engineer for the Texas Gulf Producing Company, Houston, Texas. He resides at 3777 Nottingham, Houston.

1938

Norman L. Peukert, who lives at 4300 Lenox, Shrewsbury, Missouri, is a metallurgist and foundry engineer for the Carondelet Iron Foundry of St. Louis.

Leonard C. Lonsberg is in partnership with his father in the Lonsberg Trucking and Material Co. Leonard's address is 531 Broadway, Platteville, Wisconsin.

Chilton E. Prouty is Professor of Geology at the University of Pittsburgh.

John Russell Bircher is with the Battelle Memorial Institute in Columbus, Ohio. His address is 156 Brevoort Rd., Columbus, 2, Ohio.

Irvin C. Spotte is general superintendent of the Princess Elkhorn Coal Co., David, Kentucky.

Rupert A. Jarboe lives at 3420 Agnes, Kansas City, Missouri.

Cecil W. Robertson is assistant superintendent of construction of the E. B. Badger and Sons Company, Box 248, Port Neches, Texas.

Richard G. Prough recently moved to 3501 Belfontaine, Houston, 5, Texas.

Joseph W. Howerton, who lives at 248 Washington, Oak Park, Illinois, is with the Western Electric Company in Chicago.

C. E. Prouty, '38, is with the Department of Geology, University of Pittsburgh, Pittsburgh, Pa.

July-Aug, 1947

ALUMNI PERSONALS

William E. Stephens, '38, transferred to the Chicago Office of the U. S. Gypsum Company as Assistant Production Manager. His address is c/o U. S. Gypsum Company, Dept. 170-W, 300 W. Adams Street, Chicago 6, Ill. Bill writes that he is enjoying the weekly noon luncheon with the Chicago alumni held each Monday at the Engineer's Club in Chicago.

Harry L. Gerwin is associate section head of the Naval Research Lab. Harry resides at 203 Woodland Drive, Forest Heights, Washington, 20, D. C.

Class of 1939

Thaddeus S. Stojeba gives his address as Creole Petroleum Corp., C/O Petroleum Engineering Dept., Caripito, Venezuela, South America.

Robert M. Stewart moved the first part of July to Route No. 3, Carthage, Texas.

F. W. Heiser is production engineer for the Derby Oil Co. Fred resides at 543 S. Dellrose, Wichita, 9, Kansas.

Harold C. Miller gives his new address as C/O Charles Hardy, Inc., 420 Lexington Avenue, New York, 17, New York.

Roy G. Brown lives in Newport News, Virginia at 5927 Wickham Avenue.

G. R. Carpenter is working in the National Gasoline Department of Phillips Petroleum Company. His address is 807 NE 24th, Oklahoma City, Oklahoma.

Phil Blazovic, Jr. is in Honduras working for the New York and Honduras Rosario Mining Company. Mail will reach Phil at 124 1/2 North Third Street, Albuquerque, New Mexico.

William R. Ellis is now living at 1210 Rebecca Avenue, Pittsburgh, 21, Pa.

John O. Campbell is assistant to the Northwest Division Manager of the Carter Oil Company, Billings, Montana.

James Roy Gentry is project engineer for the State Highway Department, P. O. Box No. 219, Brookfield, Missouri.

Harold S. Kidd, who lives at 1624 N. 33rd St., Omaha, Nebraska, is working for the U. S. Engineer Department in Omaha.

John R. McDonald is working for Phillips Petroleum in Sweeny, Texas. He says, "Beautiful country here and a swell plant. Reed Gordon, '42, is also here." John can be reached at Box 332, Old Ocean, Texas.

Thomas L. Harsell, Jr., who lives at 841 Manhattan Avenue, Hermosa Beach, California, is plant superintendent of the Harshaw Chemical Co., El Segundo, California.

Richard W. Love is district petroleum engineer for The Texas Company in Wichita, Kansas. Dick lives at 812 N. Madison, Wichita.

John Clay Magill is industrial hygiene engineer for the State Board of Health and the City of Kansas City. John lives in Liberty, Missouri, at 755 Sunset Hill.

Class of 1940

John D. Deery has been promoted to chief engineer at the West Virginia Coal and Coke Corporation, Omar, West Virginia. John writes, "I look forward to receiving each copy of the Alumni magazine. In the last issue I noted with interest that Dr. L. E. Young was to give the 1947 commencement address. I know Dr. Young personally and would have liked to have been there and heard his address."

Clyde L. Cowan received his Master of Science degree this June from Washington University.

Clarence E. Palmer, who is with the Am-bursen Engineering Corp. of Houston, Texas, was on the campus May 23rd. Clarence lives at 609 Cowan St., Pasadena, Texas.

Jack E. Tiede is a sales engineer in the Mechanical Division of the United States Rubber Company, 305 South Broadway, St. Louis, 2, Missouri.

Carl H. Cotterill is research metallurgist for the American Zinc, Lead, and Smelting Company. Carl lives at 2583 West Point Drive, Maplewood, 17, Missouri.

Gerald E. Wallace is an engineer inspector for the Missouri State Highway Department in Kirkwood.

Leung Yuen Lee lives in Boonton, New Jersey, at 106 Plane St.

S. L. Hertling is division supervisor for the Aluminum Ore Company in East St. Louis, Illinois.

James C. Wilson is with the L & N Railroad in Middlesboro, Kentucky.

W. J. Smothers gives his address as 1802 Thompson, Lafayette, Indiana.

Edward Byron Kuhne is now working as junior engineer for the Halliburton Oil Well Cementing Co. in Flora, Illinois.

Lewis E. Sears is editor of the Leon News in Leon, Kansas.

Henry M. Wolpers is chief engineer for the United Construction Co., Winona, Minnesota.

Charles Ward is plant superintendent for the Ralston Purina Company in Pocatello, Idaho.

Howard M. Katz, Jr. is associate engineer for the Phillips Petroleum Corporation in Bartlesville, Oklahoma. Howard's address is 919 S. Keeler, Bartlesville.

Class of 1941

WAYNE J. BENNETSEN, Correspondent 6327A Sutherland Avenue, St. Louis 9, Mo.

Harold J. Schroeder was on the campus June 28th. He has been promoted to chief engineer at the Baroid Sales Division of the National Lead Co. at Malvern, Arkansas. His home address is 205 E. Sullenberger St., Malvern.

John R. Enochs is assistant design engineer in the Motors Engineering Division of Telechron, Inc., Ashland, Mass.

S. T. Delpopolo's mailing address is 3546 Hertford Place, Washington, D. C.

Major William M. Puetz gives his address as 304 AAFBU Sqn., A, Box 2023, Langley Field, Virginia.

Eugene P. Boyt is an engineer with the Bureau of Reclamation. His address is Box 764, Davis Dam, Nevada.

Captain William L. Nesley's address is 31st Weather Squadron, APO 953, C/O Postmaster, San Francisco, California. Bill is in the Army Air Corps.

Daniel R. Stewart is exploration engineer for the American Zinc, Lead, and Smelting Co., St. Louis, Missouri.

Jaul J. Burchier is working for the Avoset Company, 38 First Street, San Francisco, California.

Adolph A. Gebhardt is employed by the Singer Manufacturing Co. He lives in Bridgeport, Conn., at 298 Jackson Avenue.

Andrew B. Black is Betts Plant foreman of Cerro de Pasco Copper Corp.

Edward F. Holland is construction superintendent for the H. B. Deal and Company, Inc., 1218 Olive Street, St. Louis, 3, Missouri.

Seymour J. Beers whose mailing address is 146, Jefferson City, Tennessee, is employed by the Universal Exploration Company.

Daniel S. Lynch is now living at 427 Woodbine, Towson, 4, Maryland.

Robert K. Boyd is with the Guy F. Atkinson Company and is now working on a job in Bridal Veil, Oregon on the Columbia River.

Merritt M. Francis is working for the Taylor Instrument Co., in Rochester, New York.

Charles A. Wischoff, who lives at 403 S. Hickory St., Centralia, Ill., is an exploitation engineer for the Shell Oil Company.

Norman N. Baker is a petroleum engineer for the Gulf Oil Company. His mailing address is Star Route No. 1, Crane, Texas.

Class of 1942

Gilbert A. Naert was a campus visitor on June 17. Gilbert is with the National Lead Company in St. Louis. His home address is 3960 Wilmington Street, St. Louis, Mo.

Joseph C. Knittel, who is a photogrammetrist with the U. S. Army Map Service, is living at 5419 Cathedral, Washington, 16, D. C.

Gilbert G. Haas has moved from Bartlesville, Oklahoma to 228 East Convent Street, Lafayette, Louisiana.

Sam Kurtz is living in Bureau, Illinois. Charley Hillery's address is 825 West Dayton St., Madison, 5, Wisconsin.

Austin E. Schuman is living at 7522 Alicia Avenue, St. Louis, 17, Missouri. He is employed by Westinghouse.

Harold A. Krueger is mine superintendent for the St. Louis Smelting and Refining Co. Harold's mailing address is 400 Washington, Baxter Springs, Kansas.

Harry F. Robertson is working as a mining engineer for the Tennessee Coal, Iron, and Railroad Co. He lives at 216 Woodward Rd., Birmingham, Alabama.

Vernon T. McGhee, whose mailing address is P. O. Drawer 272, Alvin, Texas, is a petroleum engineer for Phillips Petroleum Company.

Julian A. Fuller is living at 202A Rose Drive, Pine Haven, Bauxite, Arkansas.

Walter E. Doelling is with the Reynolds Metals Company in Malvern, Arkansas.

George P. Dahm is chief metallurgist for the Harrison Abrasive Corporation in Manchester, New Hampshire.

Harry B. Smith is electronic research engineer for the Davies Laboratories, Inc., in College Park, Maryland.

John K. Olsen gives his mailing address as 1600 Arch St., Philadelphia, Pa. John is employed by Ingersoll-Rand Company.

Jay K. Johnston is with the Glenn L. Martin Co. of Middle River, Maryland. Jay lives in Baltimore at 1107 Overbrook Rd.

John W. Nevin is working for Bethlehem Steel as assistant metallurgist. John's address is 834 Franklin St., Johnstown, Pa.

Rex L. Hopkins is a civil engineer with Carson-Mitchell Engrs., Inc. His mailing address is 1428 S. Rogers, Springfield, Missouri.

Ben E. Weidle is precipitron sales engineer for Westinghouse Electric Corporation. Ben lives at 5387 Pershing, St. Louis, 12, Missouri.

Charles E. Zanzie, who is working for the United Engineers and Constructors, Inc., in Philadelphia, lives at 223 Shirley Rd., Upper Darby, Pa.

Brandon F. Ebeling, whose mailing address is Box 211, Bryant, Arkansas, is general surface foreman for the Reynold's Mining Company in Little Rock, Arkansas.

Robert Van Nostrand is an instructor at MSM. His address is 8 Cronin Court, Rolla, Missouri.

Gilbert G. Haas, who lives at 228 E. Convent St., Lafayette, La., is a field engineer for the Drilling Specialties Company.

David Cutler is a partner in the Cutler Sign Advertising Co., Philadelphia, Pa. Dave lives at 350 Landrillo Rd., Bala Cynwyd, Pa.

Paul F. Steinhoff is employed as a chemical engineer by the Barrett Division of the Allied Chemical and Dye Corporation. Paul's home address is 234 Harvey, Philadelphia, Pa.

Fritiof M. Bloomberg, who is an engineer with the Allis-Chalmers Mfg. Co., is now living at 2049 N. 25th, Milwaukee, Wisconsin.

Class of 1943

James A. Neustaedter left New York July 22 on the Pan American Airlines for Paramaribo, Suriname, South America. Jim is a mining engineer for Alcoa and was located at Edna Bay, Alaska before he was transferred to South America. He visited in Rolla the first part of July.

Robert L. Hanna gives his address as R. D.

ALUMNI PERSONALS

July - Aug
1947

No. 1, Fayetteville, New York.

John C. Schilling is industrial hygiene engineer for the City of St. Louis Health Division. John lives at 2713 Meramec St. in St. Louis.

Leonard N. Larson is doing research and development in the Ceramic Experimental Lab of the Auto Lite Spark Plug Division. His home address is Box 184-26M, R. R. No. 3, Fostoria, Ohio.

Ed E. Gygax, who is with the Carrier Corporation, has recently been transferred to Chicago, Illinois. His address is 1114 E. 62nd, St. Chicago.

R. K. Rasmussen is a ceramic engineer for the Mississippi Glass Co. Rene lives at 5310A E. Nelson Avenue, St. Louis, 20, Missouri.

Richard C. Brackett is a geologist for the Stanolind Oil and Gas Company, Box No. 1540, Midland, Texas.

Harold W. Haas is with the Phillips Petroleum Co. in Phillips, Texas. He gives his address as 1240 Roberts, Borger, Texas.

E. Harvey Barnett is now living at 614 E. 16th, Alton, Illinois.

Ambrose E. Pritchard is a mechanical engineer for the Shell Oil Company of Wood River, Illinois. His home address is 5216 Theodosia, St. Louis, 13, Missouri.

Herbert H. McColgin is working in East St. Louis for the Aluminum Ore Company.

Owen A. Gensman is assistant engineer with the Phelps Dodge Corp., Box 775, Ajo, Arizona.

Fred Kibler is junior engineer for the Carter Oil Company. His home address is Garrison Court, Apt. No. 4, Carmi, Illinois.

Leo G. Spinner, who lives at 90 N. E. Blvd., Corona, California, is assistant highway engineer for the California Division of Highways.

Jim Bottom is construction superintendent for the Monsanto Chemical Company, in Monsanto, Illinois.

Warren J. Wagert is employed by the Shell Oil Co. He has recently moved to 1662 Grand Avenue, Bronx, 53, New York.

John O. Wilms is a safety engineer for the Liberty Mutual Insurance Company. His address is 4138 Newport Avenue, Chicago, Illinois.

Clyde A. Durphy has recently moved to 9332 Cloverhurst Drive, Afton, Missouri.

William S. Gray, Jr. is metallurgist for the Continental Foundry and Machine Company, located in East Chicago, Indiana. Bill lives at 748 Connecticut, Gary, Indiana.

Wesley J. Dolginoff is with Black and Veatch, Consulting Engineers in Kansas City, Missouri. He lives at 3539 Gillham Rd. in Kansas City.

O. R. Self has recently moved to 139 East Mountain View, Long Beach, 5, California.

James R. Paul is an engineer with Dowell, Inc., Box 85, Ulysses, Kansas.

James W. Davis, is topographic engineer for the U. S. Geological Survey, Box 133, Rolla, Missouri.

Arthur L. Peterson is working for the Shell Oil Company, Deer Park, Texas. He lives in Houston at 1401 Truxillo.

Elmer R. Brown is working as structural designer for the U. S. Engineer Department in St. Louis, Missouri.

Halford O. Strickler is employed by the Standard Oil Co. of California. Mail will reach him at Standard 11-C Club, Taft, California.

Class of 1944

Robert S. Westwater is working in the Sales Department of the Fram Corporation in East Providence, Rhode Island. Bob's home address is 18 Merrick St., Rumford, 16, Rhode Island.

George E. Barber is with the American Telephone and Telegraph Co. of St. Louis.

Herbert D. Barnhart is employed in the Electrical Design Section of the Transportation Motor Engineering Division of General Electric in Erie, Pa. His address is 829 Priestley, Erie, Pa.

Harold Rudisalle is working in the Chicago Sales office of the Construction Aviation and Communication Section of Westinghouse. His

address is 727 N. East Avenue, Oak Park, Illinois.

Glen L. Staley is working for the Chicago, Indianapolis and Louisville Railroad. He lives in Lafayette, Indiana, at 123 S. 7th St.

William T. Rule is technical advisor for the Eagle-Picher Lead Co., in Hillsboro, Illinois.

James D. Dowd was on the campus on June 3rd. Jim is with the Alcoa Co. and is living at 332 Freeport Road, New Kensington, Pa.

Gillemo Sauri has returned to the United States and expects to become a United States citizen. He is living temporarily at 1123 Tyler Street, St. Louis, Missouri.

Dick Mateer recently received the degree of Master of Science from Carnegie Tech. He is working toward his Doctorate at the University of Pittsburgh where he is a part time instructor. Mail will reach Dick at 624 Clyde Street, Pittsburgh, Pa.

Daniel T. Blount received his Master of Science degree this June from Washington University in St. Louis.

Max Custis, who is employed by the Crown Willamite Paper Co., gives the Crown Willamite Inn, Camas, Washington as his address.

Robert E. Setchfield is living at 8677 North Avenue, Overland, Missouri.

Richard D. Wheat was visiting in Rolla on July 26. Dick is assistant manager of the Wheat Electric Service in Springfield, Missouri. He says that he sees Homer Ford, '34, frequently. Homer is working in Springfield as post engineer of the Veterans Hospital.

William H. Dragoset is living at 1164 Broad Street, Rahway, N. J.

Henry S. Adamick is transitman for the Kenecott Copper Co., Ray, Arizona.

Robert L. Banks has changed his address to 511 E. 3rd St., Bartlesville, Oklahoma.

Ed Waltenspiel is working for C. W. Dryden, Civil Engineer, in Flagstaff, Arizona. Mail will reach him at P. O. Box 1651, Flagstaff.

Class of 1945

James M. McKelvey and Herman F. Schalk received their Master of Science degrees from Washington University in St. Louis, at the spring commencement.

Osborne Milton gives his new mailing address as Sandia Base Branch, Albuquerque, New Mexico.

Edwin W. Blase, ex '45, has moved to 300 Rushmore Avenue, Carle Place, Long Island, New York.

Two former M. S. M. students received their B. S. degrees and commissions as Second Lieutenants, U. S. Army, at the graduating exercises at the United States Military Academy, West Point, New York on June 3rd. They were James G. Fraser, ex '45 who ranked twelfth in the class and Willis H. Clark, ex '44. Clark is the son of H. Smith Clark, '18, who will be remembered as St. Pat in 1917.

Miles N. Suda is working as a mechanical engineer for Frank Wynkoop and Associates. Miles can be reached at 461 38th Street, Oakland, 9, California.

Amy Goodhue West and her husband Don M. West, '43, have moved to 141 Bruce Street, Scotia, New York.

Herman Schalk is living at 3825 Fairview, St. Louis, 16, Missouri.

Harold F. Webers was visiting in Rolla the week of June 9th on his vacation. He works for the National Lead Company in St. Louis, Missouri.

Class of 1946

CARNEY C. FESSLER, Correspondent
45 North Louisiana Avenue
Cape Girardeau, Missouri

Robert P. Connett is an engineer with the Fredericktown Lead Company. Bob's home address is 704 South Main, Fredericktown, Missouri.

Margaret Oaks Renwick is employed by the

Inland Lead and Zinc Company, Livingston, Wisconsin.

John F. Coulthard is a junior engineer with the Empire Zinc Division of the New Jersey Zinc Company, Gilman, Colorado.

Jack Y. Nomi is engineering aide in the Corps of Engineers in Cottage Grove, Oregon.

J. Harvey Renfrew is working towards the degree of Doctor of Science in Ceramics at M. I. T.

Jose Antonio Machado is working in Bogota, Colombia as a junior geologist for the Tropical Oil Company.

Howard M. Fowler is mine manager and engineer for the Lucky Nell Mining Company, Hollis, Via Ketchikan, Alaska.

Class of 1947

G. H. Fritz is assisting mining engineer for Anaconda Copper Mining Co. in Butte, Montana.

Philip A. Tucker is with the American Rolling Mill Co., his home address is 1106 Calumet Avenue, Middletown, Ohio.

Richard G. Steiner is a student engineer with the Union Electric Company of Missouri, 12th and Locust St., St. Louis, Missouri.

Robert H. Kendall is working for the Missouri State Highway Department in the Bridge Design Department. Bob's mailing address is 309 W. McCarty St., Jefferson City, Missouri.

Jay L. Weeks is a junior metallurgist for the Colorado Fuel and Iron Company of Pueblo, Colorado.

George H. Davis is employed by the Ohio Steel Foundry of Lima and Springfield, Ohio. His address is 1725 Idlewild Drive, Lima, Ohio.

John E. McKay is working as a chemical engineer for the Union Starch and Refining Company of Granite City, Illinois.

Chester M. Pomeroy is technical representative for the Explosive Division of the E. I. du Pont de Nemours and Company. Mail will reach him at Hotel Emerson, Mount Vernon, Illinois.

William E. Howard is working for the Emerson Electric Corporation. Bill's home address is 5339 Nottingham St., St. Louis, Missouri.

Herman Mansfield is working as a junior metallurgical engineer for Charles Hardy, Inc., 420 Lexington Avenue, New York, New York. He resides at 1481 Eastern Parkway, Brooklyn, 33, New York.

James E. Wylie is equipment engineer for the Southwestern Bell Telephone Company in St. Louis. Jim's home address is 6839 Normandale Drive, St. Louis, 20, Missouri.

Lester K. Moeller is working for the Stanolind Oil and Gas Company, R. R. No. 2, Bishop, Texas.

Walter I. Stevens is with the Gulf Oil Corporation in Hobbs, New Mexico.

John W. Lewis, Jr. is vice president of the Dixie Firebrick Company, 824 Woodward Blvd., Birmingham, Alabama, and superintendent of their plant at Kimberly, Alabama.

Walter Liddel is attending the Baltimore Institute of Photography at Baltimore, Maryland.

Jim Sullivan is assistant research lab technician working in the Ceramics Research Laboratory of the A. E. Smith Corp. of Milwaukee, Wisconsin.

Mel Kallmeyer is living at 501 N. Central Avenue, Chicago, 44, Illinois.

Joel B. Pomerene is assistant geologist of the Inland Steel Company, Ishpeming, Michigan. His mailing address is 352 Marquette St., Ishpeming, Michigan.

H. Gene Russell has changed his address to 4427 Ellis Avenue, Chicago, Illinois. Gene is a chemical engineer for the Sinclair Refining Co., East Chicago, Indiana.

Paul M. Bennett, Jr., is with the Atlantic Refining Co., Magnolia Bldg., Dallas, Texas. His home address is 5127 Worth St., Dallas.