



## Missouri S&T Magazine, May-June 1947

Miner Alumni Association

Follow this and additional works at: <https://scholarsmine.mst.edu/alumni-magazine>

---

### Recommended Citation

Miner Alumni Association, "Missouri S&T Magazine, May-June 1947" (1947). *Missouri S&T Magazine*. 230.

<https://scholarsmine.mst.edu/alumni-magazine/230>

This Magazine is brought to you for free and open access by Scholars' Mine. It has been accepted for inclusion in Missouri S&T Magazine by an authorized administrator of Scholars' Mine. This work is protected by U. S. Copyright Law. Unauthorized use including reproduction for redistribution requires the permission of the copyright holder. For more information, please contact [scholarsmine@mst.edu](mailto:scholarsmine@mst.edu).



May-June, 1947

# MSM ALUMNUS

Missouri School of Mines and Metallurgy  
ROLLA, MO.

VOL. 21

MAY-JUNE :: 1947

NUMBER 3

## Dr. Young and Dr. Russel Caples Honored



Photo—  
Esquire Studio,  
Rolla

Two distinguished Engineers given Degrees of Doctor of Engineering (honoris causa).  
From left to right: Dr. F. A. Middlebush, Dr. L. E. Young, Dr. Russel Caples, Dean Curtis L. Wilson.

### Commencement Held June 3

The exercises for 161 seniors and 23 graduate students were held Tuesday, June 3, at 10 a.m. in the Uptown Theater.

Dean Curtis L. Wilson, presiding over the ceremony introduced the department chairmen, who in turn presented the candidates for degrees to Dr. Frederick A. Middlebush. Honorary degrees of Doctor of Engineering, *honoris causa*, were awarded to Dr. Lewis E. Young, former Director of MSM, consulting engineer of Pittsburgh, Pa.; and Russel Bigelow Caples, manager of the Great Falls reduction department and the slag treating plant of the Anaconda Copper Mining Company.

The fifty year medal was presented to P. B. Anderson of Kirkwood, Mo., J. S. Cameron of Henryetta, Okla., and J. A. Rogers of Sinola, Mex., all of whom graduated in 1897. Only Mr. Rogers was present to receive the award.

Dr. Young gave the commencement address, his subject being "The Engineer and American Free Enterprise." The Reverend J. V. Carlisle of the Rolla Baptist Church delivered the invocation.

The commencement activities began Sunday evening, May 31 with the annual Baccalaureate held in Parker Hall. The Reverend Ralph M. G. Smith, pastor of the First Baptist Church of Kirkwood, Mo., spoke on "The Characteristics of a Superior People."

Music for the Baccalaureate and Commencement was presented by the Chamber of Music Society and the Glee Club.

Two outstanding engineers, Dr. Lewis E. Young and Russel B. Caples were awarded the honorary degree of Doctor of Engineering, *honoris causa*, at the commencement exercises on June 3.

Dr. Young, consulting engineer of Pittsburgh, Pa., and former director of Missouri School of Mines and Metallurgy, has had a distinguished professional career. He was graduated with a B.S. in Mining from Pennsylvania State College in 1900, received his professional degree E.M. from Iowa State College in 1904, and his Ph.D. from the University of Illinois in 1915.

His professional work began in teaching, first at Iowa State College and later at the Colorado School of Mines. Dr. Young was appointed Director of MSM in 1907. During his administration great progress was made in the educational program of the school and many additions were made to the campus, the chief one being the construction of Parker Hall.

After leaving the School of Mines in 1913, Dr. Young became a member of the faculty of the University of Illinois, serving at the same time as Consultant to the U.S. Bureau of Mines. In 1918 he went to St. Louis as manager of the steam heating department of the Union Electric Light and Power Company. Later Dr. Young became vice president of the Pittsburgh Coal Company. Since 1939 he has been a consulting engineer, specializing in mechanization of mines.

Dr. Young is the author of books on mine taxation and  
(Continued on Page 19)



## CAMPUS NEWS

### M. I. Signer '23 Dean of Colorado School of Mines



M. I. SIGNER

M. I. Signer has been named Dean of the faculty of the Colorado School of Mines at Golden. He has been a member of the Colorado School of Mines faculty since 1929, and since 1943 has been head of the Mining department.

Before entering the teaching field Dean Signer did construction and development work for the Princeton Gold Mines, he was an engineer with the State Highway Department of Illinois, and engineer for the Original Mining and Milling Co. of California.

A Pi Kappa Alpha, Dean Signer is also a member of Theta Tau, Blue Key, Quo Vadis, and he received his "M" in basketball at MSM. He is well known in mining and other mineral engineering circles, and is a member of several professional societies. Recently Dean Signer was elected Vice President of the National Collegiate Athletic Association, and he is President of the Rocky Mountain Athletic Conference.

### Enoch R. Needles Speech Award Made

"We, as engineers, must stop taking a back seat in world affairs; for as members of a world society we must be willing to shoulder the problems of that society," said Walter W. Wissman '50, in his speech entitled "Political, Economic, and Social Problems that Face the Engineer of Today" which won the Enoch R. Needles speech award.

Frank White '50, took second honors while Leslie Marcus and Kenneth Niewoehner '47 tied for third place in the finals which were held May 21 in Parker Hall. The judges were Dr. Forrester, Mr. Jelinek, Prof. Lloyd, Dr. Schlecten, and Prof. Carlton.

The speech preliminaries were held on April 30, eliminating all but 13 men for the finals. The speeches were extemporaneous and were not to exceed 10 minutes in length.

The fund from which the speech awards are made was donated to the School of Mines by one of its prominent alumni, Dr. Enoch R. Needles '14, for the promotion of the humanities among engineers.

Dr. Needles has three degrees from MSM; he received his B.S. in 1914, his professional degree, Civil Engineer in 1920, and in recognition of his wide-spread fame in bridge design and construction he was awarded the degree of Doctor of Engineering, *honoris causa*, in 1937.

He is world famous for the work he did on the first vertical lift bridge over the Delaware river. At the present time he is in charge of the New York office of the firm of Howard, Needles, Tammen and Bergendoff.

Dr. Needles holds membership in Tau Beta Pi, Phi Kappa Phi, American Institute of Construction Engineers, Engineers Club of New York, National Society of Professional Engineers, and the ASCE. He is a member of Pi Kappa Alpha fraternity. He was a full Colonel in the Engineers' Corps during the war.

### John A. Rogers '97 Returns for Commencement

Many on the MSM campus enjoyed visiting with "an old timer," John A. Rodgers, a native Missourian, who returned to Rolla after 50 years absence for the 1947 Commencement. Mr. Rogers said that when he arrived in Rolla a few days ago, he wanted to just look around and see how much he could recognize of the school and town he knew years ago. He said that the change was so remarkable that he was "lost."

Upon graduation, Mr. Rogers' first job was in Denver, Colo., sampling ore and helping the Assayer. After working there a year, he started on his travels through the western mining country—Colorado, copper mines of Arizona, Texas, and finally Mexico,—and wherever he went, much of his time was spent prospecting and noting mining methods and conditions.

Early upon his arrival in Mexico, he was able to talk to the owners of the Mexican Gold and Silver Recovery Co., who had introduced McArthur-Forrest Cyanide process for the extraction of gold and silver from ores in Mexico. Mr. Rogers said that he gained "a world of knowledge" from this interview, and then started on his way again through the mining camps of Mexico. He finally found an old mining camp in the State of San Luis Potosi, and after taking samples to Mexico City for testing and finding that the ore would cyanide, he made a deal with the owner and set up a plant.

As busy as he was in his work, Mr. Rogers found time to send a description of the details of his plant operation back to his Alma Mater, and for this he was awarded a degree in Engineer of Mines in 1903.

After two years at the San Luis Potosi mine, he sold the mine and went to Sianori, Durango, Mex., where he again changed the method of preparation from concentration by tables to cyanide process, and remained there for six years. He then took over the mines and mill of the West Coast Mining Company at Santa Cruz de Alaya, Sinaloa, Mex., which he operated until 1930, and by that time silver had dropped to 30 cents an ounce. He has not re-opened this property.

Mr. Rogers now makes his home in Culacan, the capital of the State of Sinaloa, Mex., and says that he likes living in Mexico very much. He has five children, all of whom reside in Mexico.

When Mr. Rogers graduated from MSM, the class numbered only 7, three of whom are still living. The other two 50-year alumni are—John S. Cameron, who resides at Henryetta, Okla., and P. B. Anderson of Kirkwood, Mo.—neither of them were able to attend Commencement. At the commencement exercises on June 3, which he travelled over 2000 miles to attend, Dean Wilson presented Mr. Rogers with a Gold Medal, in recognition of his 50 years as a MSM alumnus.

### MSM Wins Honors at Ceramic Convention

Henry D. Bixby '48, a student in Ceramic engineering, won first prize in the speech contest at the American Ceramic Society Convention in Atlantic City on April 21. His winning speech, "Precision Casting of Material" won over the six other schools competing in the contest.

Further honors were bestowed on MSM; Dr. Paul G. Herold, chairman of the Ceramic Engineering department, was re-elected Grand Secretary of Keramos, the National Honorary Ceramic fraternity. He was also elected President of the Ceramic Education Council which reviews the curricula in all ceramic schools. Dr. Herold was appointed Program Chairman of the Refractories division of the American Ceramic Society, a position which leads eventually to Chairman of the division, the highest post possible.

C. A. Freeman '28 was made a fellow of the society and Chairman of the Refractories division.



# PRESIDENT'S PAGE

## MSM Alumnus

Issued bi-monthly in the interest of the graduates and former students of the School of Mines and Metallurgy. Subscription price \$1.50, included in Alumni Dues. Entered as second-class matter Oct. 7, 1926, at Post Office at Rolla, Mo., under the Act of March 3, 1879.

### Officers of the Association

Karl F. Hasselmann '25 ..... President  
 Harry Pence '23 ..... Vice President  
 James L. Head '16 ..... Vice President  
 Howard M. Katz '13 ..... Secretary-Treasurer

### Board of Directors

F. C. Schneeberger '25, Chairman  
 Barney Nuell '21. M. E. Nickel '38.  
 J. M. Wanenmacher '23. R. G. Prough '38.

### Contents

About Town and Campus ..... 11	Honor Awards ..... 10
Alumni Personals ..... 18	President's Page ..... 3
Athletics ..... 15	President's Visiting Committee 4
Campus News ..... 2	Maramec Spring Development. 17
Commencement Address ..... 12	Section News ..... 6
Fraternities ..... 13	

By JAMES L. HEAD '16, Vice President  
 MSM Alumni Association

In a weak and soft-hearted moment your officers and directors agreed to share with one K. F. H. '25 the task of contributing "The President's Column" for successive issues of the Alumnus. The inexorable and unrelenting finger now points to your perennial Vice President for his contribution to this invaluable vade mecum of alumni lore. And he is so unimaginative as to be unable to think of any topic but your Association and your relations to it.

We can accept the fact that the Association is now a well-established organization with clearly defined policies and definite aims. These policies and aims have been taking shape since the fall of 1941 when the Association was reorganized under the leadership of Carl G. Stifel '16. It was Carl's job to lay the groundwork for a permanent edifice properly oriented in its relations with the School, the University and the Board of Curators. He did the job quietly and effectively as those of us who either worked with him or have succeeded him can testify.

In 1944, Fred C. Schneeberger '25, took over. Carl's fine work might have gone for naught had he been succeeded by a less ebullient and indomitable individual than Freddie. Unsparing of time and effort, he not only consolidated the ground already gained but added to it and then began the building process. Building implied membership growth primarily and the results are already familiar to you in the twelvefold increase shown on the growth chart accompanying your dues statement.

An appraisal and appreciation of but a few of Fred Schneeberger's contributions to your Association appeared in this column in the January-February issue of the Alumnus. It was contributed by your current President, Karl F. Hasselmann '25 who succeeded Fred at the beginning of this year. In your new president, the Association has again found the right man at the right time. His job is to take the thing built by Stifel and Schneeberger and their associates and make it really "tick." MSM has any number of graduates to whom can be applied the description "successful, capable and experienced executive coupled with personal charm and integrity." Hasselmann is unmistakably in that category; he differs from the others in that he will take his election to the presidency seriously and will work at it, often at considerable personal sacrifice. His thinking is constructive. The endowment fund is his "baby." It is only one of his many plans of which you will hear. He generates enthusiasm. Already in less than five months he has visited our groups in New York, Pittsburgh, Chicago and St. Louis, met with

Dr. Middlebush and the Board of Curators, and made several trips to Rolla besides keeping his Texas groups in order. No one has matched that record.

I repeat, then, that we can accept the fact that the Association is now a strongly established organization. Paid up membership, while still short of our 1947 goal of 2000, is already close to the 1946 mark of 1087. We have the generous and substantial backing and cooperation of two who might be considered our most enthusiastic "Alumni," President Middlebush and Dean Wilson. The story of their contributions to the Association would more than fill this column. Noel Hubbard finds time among his many other duties to edit the Alumnus and continues to improve the alumni address records. Two of his assistants devote their entire time to these tasks. And finally, your Board of Directors is composed of men who, without exception, be they seasoned or new to alumni work, have dedicated themselves enthusiastically to their job of contributing something to the Association. Almost any one of them is a potentially worthy successor to the present officers.

And now, what of your job as an individual Alumnus and what can you do to promote the welfare of the Association?

First of all, join it—each and every year. Then get another MSM man to sign up. We need members and money. Even two thousand at five dollars each doesn't go very far for salaries, printing and essential services and precludes any consideration of scholarships, loan funds, prizes, awards, memorials, etc. The Colorado School of Mines Alumni Association has an annual budget three or four times that amount! Help us round up the "lost" ones, both graduate and non-graduate. In the past we have been very negligent of our contacts with the latter. Some lost out on graduation by only a few hours. Many of them will be pleased to know that they are eligible to join the Association. Among our forty-six life members are four non-graduates. Seven non-graduate members of the Class of 1916 have been brought into the Association through a little extra effort.

Organize a local group. There are other places on the map than New York, Chicago, St. Louis, Tulsa, Houston and Rolla. Your officers will make every effort to meet with you. President Hasselmann and I organized a Pittsburgh section in April and I met with a group in Boston on May 24. You might even get a visit from Dean Wilson and President Middlebush who have already called on the New York, Chicago and St. Louis groups. Former Director L. E. Young participates in Pittsburgh and New York meetings and other ex-faculty members give us their enthusiastic support.

Turn out to your local affairs. Some one may have put in a lot of time and work in organizing the luncheon, dinner, dance or meeting. The least you can do is support him even if it is no more than telling him that you are behind him and that you hope to attend the next one. You will not be wasting your time. I'm meeting MSM men all the time and they are a fine lot. A group of them in a meeting or social affair does not lose anything in comparison with any lodge, country club, salesman's meeting, civic-minded luncheon organization or plain poker, bowling, pinochle, chowder and marching club that I've met up with. Include the ladies wherever possible.

Send in news items about yourself, preferably through a class correspondent. We are trying to establish a chain of contact with all MSM men through a system of permanent class secretaries or correspondents. Too few classes have such an individual to keep them together. We're looking for volunteers.

Contribute articles to the Alumnus. That MSM men are not inarticulate is evidenced by the list of those who presented papers at the annual meeting of AIME in March. The list appeared in the March-April Alumnus. The article need not be of a technical nature.

Always keep MSM in the back your mind so as to put in

(Continued on Page 9)



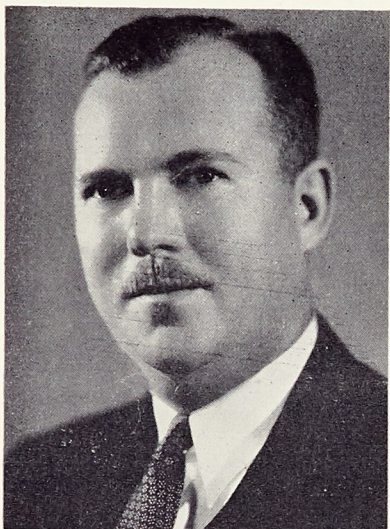
## PRESIDENT'S VISITING COMMITTEE

The President's Visiting Committee is composed of six men outstanding in their particular field. The duties of the members are to visit the educational department at MSM that they represent and from their experience in industry make suggestions for improvement to President Hasselmann. He in turn gives these suggestions to Dean Curtis L. Wilson. The members also look for ways in which the Alumni Association can effect closer liaison with the various departments visited by the committee furthering a constructive interchange of ideas between the Alumni and the school.

The President's Visiting Committee consists of Ceramic department, R. C. Weigel; Civil department, Daniel Kennedy; Geological and Production, H. E. Zoller; Electrical Engineering, Walter E. Case; Mechanical Engineering, Neal Ham; and Mining, Edgar C. Long.

Following are brief biographical sketches of the President's visiting committee.

### H. E. ZOLLER '23



H. E. ZOLLER

H. E. "Hank" Zoller, president of the Derby Oil Company of Wichita, Kan., is a prominent figure in the oil industry.

Hank started working in the oil fields during the summer months before he graduated from MSM. While working as a geologist for M. M. Valerius Oil & Gas Co., he was credited with the discovery of the Fairport Pool in Russell Co., Kan., and the Combs-Worley field, which was the first oil pool in Grey County, Tex.

From 1925 to 1930, Hank was exploitation engineer for the Romar and Roxana Petroleum Co., in Braman, Okla., Panhandle, Tex., and Tulsa, Okla.; and the following year was division exploitation engineer in East Texas.

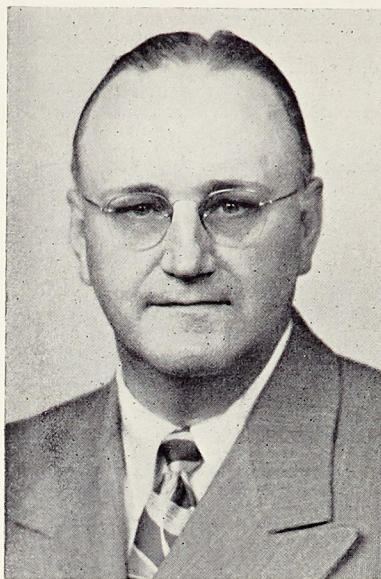
He went to the Hague, Holland as production representative for the Shell Oil Company, and upon his return to the United States became chief engineer for Shell in Houston, Tex.; Tulsa, Oklahoma, and Kansas. He was then made production superintendent, and next production manager for Kansas.

Hank took over the position of Executive Vice President of the Derby Oil Company in Wichita, Kan. He was elected to the Board of Directors in 1940 and to his present position as President in 1944.

He belongs to the Geological Society of America, is chairman for the American Petroleum Institute in Kansas, and chairman for the Mid-Continent Oil and Gas Association.

Hank Zoller was appointed by the Governor of Kansas as a member of the Kansas Industrial Commission. He is a member of the Board of Governors of Wichita University, Director of the Wichita Rotary Club, Director and Past President of the Wichita Club, a Director of the KAKE Broadcasting Company, and Director of the Richie-Adams Paints, Inc. A follower of Isaac Walton, Hank likes to fish and also plays golf. He will be remembered by his classmates as active in campus affairs during his school days; serving as president of the freshman class, captain of football team, a member of Sigma Nu fraternity, Theta Tau, Tau Beta Pi, and Satyrs.

### NEAL HAM '23



NEAL HAM

Neal Ham has long been an active member of the Alumni Association, serving as President of the St. Louis Section from 1936 to 1937.

He graduated from MSM in 1923 and received his professional degree E. M., in '28. While in school he was a member of Kappa Sigma fraternity, the Boosters' Club, Missouri Mining and Metallurgy Association, and the Miners' Cotillion Club; he also served on the Pan-Hellenic Council.

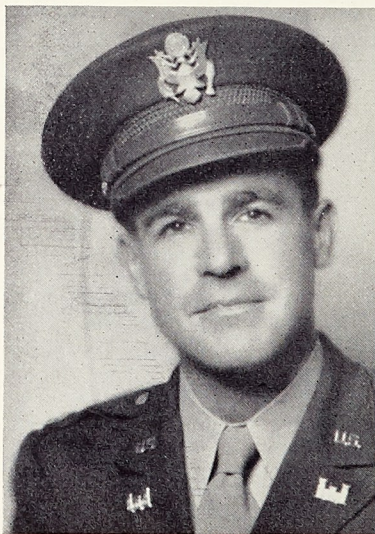
Neal has worked for Ingersoll-Rand Co. for 24 years, part of which time he was

sales engineer, and later was made district manager of the company in St. Louis, Mo.

Enlisting in the first world war as a private, Neal rose through the ranks and was discharged a first lieutenant. He was later appointed a Major in the Engineer Corps, U. S. Army, but was released during World War II in order to accept the important position as branch chief of the General Industrial Equipment Division of the War Production Board. He was in charge of the production of blowers, and compressors for the domestic war effort as well as for lend lease.

During duck season chances are you will find Neal Ham sitting in a blind spot shotgun in hand. He also likes to pheasant hunt, and plays golf.

### EDGAR C. LONG '30



EDGAR C. LONG

A veteran of World War II, Edgar C. Long served in Africa, Italy, Germany as a Major in the Engineer Corps. After returning from overseas he resumed his former job as assistant production manager, Baroid Sales Division, of the National Lead Company in Los Angeles.

A Rolla boy, Edgar graduated from MSM in 1930 and received his Engineer of Mines degree in '39. He was a Kappa Sig, a member of Tau Beta Pi, president of Theta Tau, and treasurer of his

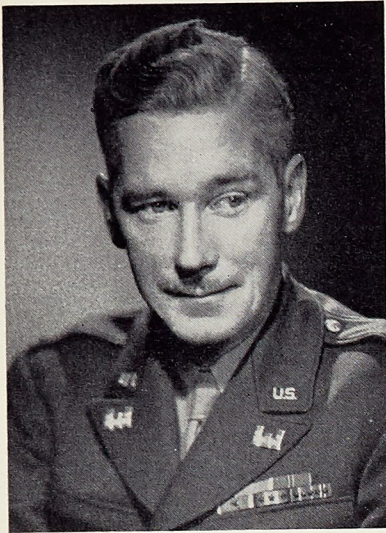
class his Sophomore year.

Working as a mucker, miner, and engineer in the Colorado Tunnel from 1930 to 1933, he then went to Picher, (Continued on Page 9)



## PRESIDENT'S VISITING COMMITTEE

### DANIEL KENNEDY '26



**LT. COL. DANIEL KENNEDY**

Having the honor of being decorated personally by Gen. Patton for brilliant achievement, Daniel Kennedy has proved himself an expert in the field of aerial mapping.

While serving as a Lt. Col. with Patton's 3rd Army in France, he was assigned a problem for study that seemed to be hopeless. Dan studied and worked over the matter for three days and nights and finally came out with the correct answer.

Col. Kennedy was called before Gen. Patton and several other generals and his work was highly commended. Following the commendation as Col. Kennedy was about to leave the room, Gen. Patton stepped forward and pinned upon him the Bronze Star for his brilliant achievement in military service. As a result of his service he also received the Purple Heart and the Legion of Merit.

Dan is a veteran also of the last World War and received his education under the old vocational training program at MSM. He received his B.S. in 1926, and his professional degree of Civil Engineer in 1935. He was connected with the U.S. Geological Survey from graduation until entering World War II. At the present time he is chief topographic engineer and chief of the operations and planning of the Army Map Service.

He is a member of the American Society of Civil Engineers, the American Society of Photogrammetry, the Congress on Surveying and Mapping, the Society of American Military Engineers, and the Explorers Club.

### WALKER E. CASE '22



**WALKER E. CASE**

Having a bit of the wanderer in his soul is Walker E. Case, who is a traveler at heart and has visited most points of interest in the United States, Canada and Mexico in the last twenty years.

Walker graduated from the School of Mines in Electrical Engineering. While in school he played basketball, was vice president of his class his Junior year, was a member of the Rollamo Board, and of Satyrs.

On June 1 of this year Walker completed 25 years work in the telephone field. He started as a transmission tester for the Southwestern Bell Telephone Company. In 1923, he

joined the staff of the American Telephone and Telegraph Company working in the Long Lines department as a technical employee. He served with the same company as supervisor of cable construction, engineer in the maintenance department, and engineer on cable construction work. He was recently appointed engineer in charge of the Missouri portion of the new coaxial cable project to be constructed between Kansas City, Mo., and Omaha, Neb. He will have charge of the new office to be established in St. Joseph, Mo.

Walker has been active in PTA work during the years that his daughter, Betty Jo was in school. He was Past President and Treasurer of the Garfield School PTA.

He is a member of the Board of Ruling Elders of the Nelson Presbyterian Church, and has served as financial secretary for this church.

### ROBERT C. WEIGEL '34

Robert C. Weigel received his degree in Ceramic Engineering. Since graduation he has been employed by the Mexico Refractories and is now in charge of the mining activities of the company, and previously was in charge of the laboratory.

Bob's activities at MSM were widespread. He was a member of the swimming team, the track team, a member of the Miner staff, the Officers Club, and was active in the MSM Glee Club. His fraternity is Pi Kappa Alpha.

He is married to the former Miss Margo C. Hough ex-'36 and has two children, Robert Jr., and Linda.

### G. C. CUNNINGHAM '25



**G. C. CUNNINGHAM**

Chemistry and the Chemical Engineering department are ably represented by G. C. Cunningham of 739 St. Louis street, Edwardsville, Ill. "Clem" has been employed by the Shell Oil Company, Inc., since his graduation from MSM. He started as a sample carrier in the refinery control laboratory; rose through the "ranks" to head of that laboratory, and later went into process and technical development work. Along this line, he spent nine months in Europe observing oil refining practices and refinery research. He

(Continued on Page 18)



## SECTION NEWS



Seated: left to right: Mrs. W. D. Keeling, Karl F. Hasselmann, Paul Nelson's Date, Mrs. Karl F. Hasselmann, Mrs. J. H. Olson, Mrs. L. A. Turnbull, Mrs. R. V. Milton, L. A. Turnbull.  
 First row, standing, left to right: T. H. Kennedy, Dr. C. E. Bardsley, Mrs. T. H. Kennedy, R. P. Baumgartner, Mrs. E. S. Wheeler, Mr. J. H. Olson, J. L. Head, Paul Nelson, W. J. Carr Jr., P. G. Forman, E. S. Wheeler.  
 Back row standing, left to right: Tom Murphy, Dr. L. E. Young, W. O. Keeling, Geo. Chedsey, R. G. Hudson, Mr. R. V. Milton, J. D. Gostin, Jack Markley, E. E. Trautwein, C. C. Van Deventer.

### St. Louis Section

By FRED P. MATLACK '25

On the evening of April 18, 1947, thirty-two loyal St. Louis alumni assembled at the Edgewater Club, 5500 South Broadway, St. Louis, for dinner and the election of officers.

Almost every affair of this nature has some outstanding feature during the evening, either a good toastmaster, or a speaker with a rare collection of stories or interesting engineering experiences to relate. Dr. J. D. Forrester, St. Louis section's speaker for the evening, had a combination of all these qualifications. Dr. Forrester is chairman of the department of Mining Engineering, of the Missouri School of Mines at Rolla, and his talk was enjoyed by all. It is an unanimous opinion that the modern, streamlined Mining department will enjoy a great future as one of the best in the country.

J. K. Walsh made a short talk entitled "When in the Course of Human Events." Others who spoke were Frank Leveridge, Wm. Taggart, Mickey Brazill, Neal Ham, and Harry Pence, who introduced Dr. Forrester. The B and B's included remarks by our retiring chairman; and then came the moment we had all awaited, the parting defense of Mother England by our ex-national President, Fred C. Schneeberger.

The meeting closed with the reports of the nominating committee and the election of new officers for the ensuing year. The new officers are as follows: Alan J. Hoener '36, chairman, Harold F. Webers '45, vice chairman, and Fred P. Matlack '25, secretary and treasurer.

Those present were: Charles Achuff '33, A. A. Boyle '25, M. N. Bedell '23, Harry Bobroff '27, A. E. Barnard '27, J. P. Brazill '20, C. W. Burrow, W. E. Buck '40, W. E. Case '22, Elmer Chapin '23, Robt. L. Cunningham '34, Fred H. Drawing '44, Harry W. Decker '34, Dr. J. D. Forrester, Neal Ham '23, Frank Henderson '23, Erwin Henderson '43, Alan Hoener '36, E. G. Johannes '43, Karl W. Kavalier '30, Henry J. Kohler '35, Rudolph Knoll '35, Frank Loveridge '09, W. F. Loveridge '41, Fred P. Matlack '25, B. E. Peebles '36, H. S.

### Pittsburgh Section

By CHARLES A. TURNBULL '22

A dinner meeting of the MSM alumni in the Pittsburgh area was held at the University Club on April 19 to welcome Mr. and Mrs. Karl Hasselmann of Houston and James L. Head of New York, and to formally organize the Pittsburgh section of the Alumni Association. After an excellent dinner, Mr. Head, vice president of the Association, consented to officiate as master of ceremonies, and gave a resume of the history of the Alumni Association. He told of the early vicissitudes of the association and how it has developed through the years to the successful, effective organization of today.

President Hasselmann explained the present activities and aims of the association and stated that changes in the constitution and by-laws are being considered to allow the creation of an endowment fund by the alumni to be used for scholarships and research. He emphasized also that graduates of MSM should encourage high type students to attend so that the favorable reputation gained by its graduates throughout the world will be maintained.

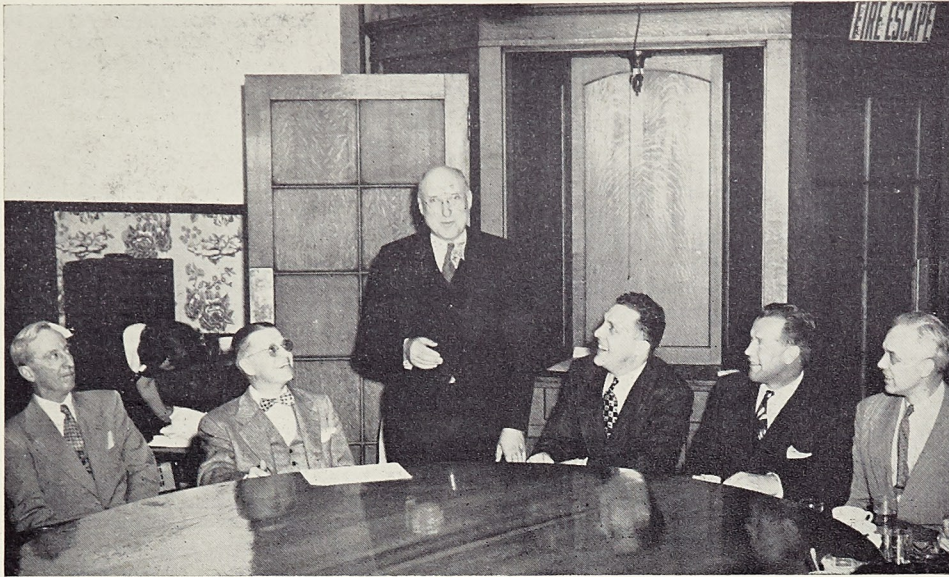
Former Director, Dr. Louis E. Young, spoke briefly, assuring the new section of his cooperation and support.

W. O. Keeling '23 was elected chairman of the Pittsburgh section and E. S. Wheeler '22 and C. J. Potter '29, vice chairman. A secretary-treasurer will be appointed by the chairman. Those attending the dinner were: Mr. and Mrs. Karl F. Hasselmann '25, Mr. and Mrs. W. O. Keeling '23, Mr. and Mrs. E. S. Wheeler '22, Mr. and Mrs. L. A. Turnbull '22, Dr. and Mrs. L. E. Young, Mr. and Mrs. T. H. Kennedy '27, Mr. and Mrs. R. V. Milton '43, Mr. and Mrs. J. H. Olson '43, P. C. Nelson '42, Jim Carr '43, C. C. Van Deventer '38, C. J. Potter '29, J. D. Gostin '44, E. E. Trautwein '40, George Chedsey '40, Jack Markley '40, R. G. Hudson '34, Tom Murphy '28, R. P. Baumgartner '28, P. G. Forman '21, C. E. Bardsley '20, J. L. Head '16.

Pence '23, T. A. Roes '36, Elmer Sperling '31, Fred C. Schneeberger '25, Wm. M. Taggart '20, Harold F. Webers '45, John K. Walsh '17.



## SECTION NEWS



Dr. Frederick A. Middlebush, President of the University, addressing the Chicago Section. From left to right: D. P. Hynes '08, Dean Curtis L. Wilson, President Middlebush, Leland Grafft '37, chairman Chicago Section, Karl F. Hasselmann '25, National President, Fred C. Schneeberger '25, Past National President.

### Tulsa Section

Dr. J. Donald Forrester, chairman of the Mining department of MSM spoke at the dinner meeting of the Tulsa Section on May 13 in the English Room of the Hotel Tulsa.

The Section met at 5:30 for a social hour so that everyone would have the opportunity to meet Dr. Forrester personally, after which an informal dinner was enjoyed by all in the coffee shop.

"The School of Mines and the Alumni Association" was the topic discussed by Dr. Forrester. He told of the present conditions at the school and discussed plans for the future.

It was announced that the place of the weekly luncheon meetings of the Tulsa section, which are held every Wednesday noon, has been changed to Bit of Sweden at 518½ South Main street. The Section would particularly like to have those who have the opportunity to visit in Tulsa to join them for these luncheons.

Present at the dinner meeting were: A. W. Walker '36, Joe R. Jarboe '30, Joe E. Scally '31, Don Bisett ex-'30, H. W. Doennecke '18, B. M. Davenport ex-'30, L. J. Zoller '18, R. A. Gund '40, C. V. Cameron '38, Paul Jezzard Jr. ex-'44, Elmer A. Milz '45, John F. Reed '40, F. M. Stewart '40, J. Douglas Martin '33, and J. M. Wanenmacher '23.

### St. Louis Section Note

To those in the St. Louis section: Kindly answer any communications or correspondence that may come your way for our records either lack much in accuracy, or the interest and responses are badly in need of improvement.

Figures show that this section sent out four hundred cards for the recent party and only seventy-three cards were returned, with an attendance at the party of only thirty-two.

At the present writing, the St. Louis section and environs have a mailing list which totals 652, including out-state members of Missouri and Illinois.

Please be responsive and courteous!

—FRED P. MATLACK, Secretary-Treasurer  
Chicago Section.

### Chicago Section Meeting

By WILLIAM SCHWEICKHARDT '28

The Spring meeting of the Chicago Section of the MSM Alumni Association was held in the comfortable quarters of the Chicago Engineers Club, Friday evening, May 23, 1947. It was a banner meeting, long to be remembered, because of the presence of President Frederick A. Middlebush, the honored guest, accompanied by Dean Curtis L. Wilson and Alumni President Karl Hasselmann '25. Added to this roster were the names of unexpected, but also most welcome guests, Past Alumni President Fred C. Schneeberger '25, and Prof. E. W. Carlton '26. Also present was a group of senior students who were visiting Chicago on their inspection trip.

A delightful cocktail hour and dinner, during which time many reminiscence stories were swapped and old friendships renewed, preceded the meeting which was called to order and presided over by Chairman Leland E. Grafft '37. After transacting a minimum amount of local section business, which included the signing of individual registration cards, the ulterior motive of which was to "needle" the conscience of those alumni who hadn't taken time, as yet, to pay their dues, the chairman called upon several guests for a few remarks.

Prof. Carlton, who was in Chicago with his senior class on their annual inspection trip, stated his pleasure in being at the meeting. With reference to the great demand by industry for graduate engineers, he stated each member of the Civil Engineering graduating class had received one or more offers for a job, and that several companies had made offers to hire all the members of the class. He concluded his pleasant remarks by introducing the seniors accompanying him.

Past Alumni President Fred C. Schneeberger '25 in his inimitable way entertained the group with his remarks. However, more seriously and convincingly speaking, he emphasized the fact that the MSM Alumni could not only expect to receive, but actually are receiving the best cooperation from the University officials in furthering the welfare of the Missouri School of Mines and Metallurgy. He further assured the group of President Middlebush's sincerity in behalf of the Alumni's interest.

Dean Curtis L. Wilson, the next speaker, was introduced  
(Continued on next Page)



## SECTION NEWS

### Chicago Section Meeting (Continued from previous Page)

by the chairman, Mr. Grafft '37. While the Dean, in his ever pleasant and gracious manner, said he had not come to Chicago this time to make a speech; he expressed his happiness in receiving the invitation to accompany President Middlebush to this meeting and devoted a few minutes to tell about the increase in faculty membership to cope with the ever increasing enrollment, which this fall is expected to go beyond 2200 students, and other pertinent problems brought about by such crowded conditions.

The guest of honor, President Frederick A. Middlebush, was introduced by Dean Wilson. Dr. Middlebush cited appropriation figures and facts to prove that the School of Mines and Metallurgy is considered a most important College of the University of Missouri; and it is his desire as well as that of the Board of Curators to maintain the high rating and leadership of the School of Mines. He lauded the untiring efforts of Past Alumni President Fred C. Schneeberger in furthering the interests of the school and unhesitatingly credited these men, by their persistence and insistence as being directly responsible for the present existing cooperative attitude of the management of the University toward the School of Mines and Metallurgy. The matter of changing the name of the head of the institution from "Director" to "Dean" was satisfactorily clarified to many present by President Middlebush, and he further stated that the title "Dean" was much more accurate in describing the importance of the administrative head of the school. The enlightening speech of Dr. Middlebush was heartily received and welcomed and he was given a standing round of applause.

Having the final position on the speaking program, Alumni President Karl Hasselmann '25 who was presented by the chairman, took this opportunity to make a most fervent plea that MSM alumni work together to strengthen the Alumni Association by becoming a closer knit and more active unit. He further declared that such a strong organization could and would be helpful, not only to the school and the undergraduate, but also to alumni in industry. He emphasized repeatedly that the important requisite to build such an organization is finances, and that the present means of income is from the annual dues of \$5.00 for each member. The Chicago section was cited as having the highest percentage paid membership, which he stated was a challenge to other sections. Mr. Hasselmann was equally sincere in praising the worthiness of the Alumni Endowment fund, and urged each successful alumnus, whom he described as every active alumnus, to help this fund reach its goal.

The meeting came to a close after the showing of a most interesting and instructive sound film entitled "EXPRESS WAYS" sponsored by Cecil A. Walls ex-'24 of the Portland Cement Association.

Those present at the meeting were: President Frederick A. Middlebush, Dean Curtis L. Wilson, Prof. E. W. Carlton '26, E. H. Clark '07, D. P. Hynes '08, A. N. Detweiler '10, J. R. Kenney '11, W. B. Gray '12, R. H. Maveety '12, J. C. Ingram '13, J. W. Scott '19, W. E. Oylers '19, P. H. Pietsch '20, A. Devereaux '24, C. A. Walls ex-'24, F. C. Schneeberger '25, K. F. Hasselmann '25, C. C. Irving '25, Wm. Godwin '25, C. L. Kitchen '26, H. A. Herder '26, J. W. Hardy '27, M. J. Paul '27, E. R. Cushing '27, Wm. Schweickardt '28, R. C. Miller '29, E. R. Kirn '29, T. J. Dover '30, E. T. Regenhardt '30, T. E. Dresser '33, W. R. Power '34, C. W. Snyder '35, J. E. Harrod '35, H. K. Hoyt '35, W. R. Burgoyne '35, P. E. Silver '37, C. G. Heslet '37, L. E. Grafft '37, M. E. Nickel '38, J. W. Howerton '38, W. E. Stephens '38, D. D. Burris '39, H. K. Tuckett '39, L. J. Riege '40, R. E. Burns '40, H. J. Andresen '40, J. R. Klug '40, A. F. Fick '41, H. B. Bute '42, L. W. Higley '43, D. J. Coolidge '43, T. B. Gettys '44, E. A. Weinle '44, E. W. Belew '47, J. A. Andrews '47, W. A. Leake '47, A. G. McGuire Jr. '48.

### New York Alumni Luncheon

By JAMES L. HEAD '16

Those who attended the twentieth bi-monthly luncheon of the New York City Alumni group on April 17 were fortunate in having Alumni President Hasselmann as guest of honor. He spoke at length on the plans for the Association and of the progress being made in carrying them out. He stressed the fine relations existing between the Association and the School and University authorities. Without the support and cooperation of President Middlebush and Dean Wilson and the invaluable assistance of Noel Hubbard, little could be accomplished. Increased membership and income are urgently needed and strong local sections are a means to this end.

Dr. M. J. Kelly '14, executive vice president, Bell Telephone Laboratories, Inc., talked informally and off the record, of the progress or rather lack of progress in settling the nationwide telephone strike. This type of authoritative comment on a wide range of topics has been a feature of the New York luncheons.

Present, besides Messrs. Hasselmann and Kelly, were: E. E. Squier ex-'05, George A. Easley '09, M. S. Mazany '09, James L. Head '16, E. S. Tompkins ex-'16, Robert C. Zevallos '24, Roger O. Day '25, E. A. Crawford '29, H. C. Miller '39, Frank P. Rogers '41, Warren J. Wagert '43, and a newcomer, Kenneth E. Meyer '43.

### New York Alumni Group Luncheon

By JAMES L. HEAD '16

Friday noon on a hot June day in New York City is not the best time for a luncheon, but nevertheless eight turned up at the Mining Club for the bi-monthly affair held on Friday, the 13th. As usual some were newcomers to the group, listed as follows: A. M. Krainess, who had just finished his junior year at MSM, and E. M. Flynn ex-'07. The latter is a veteran of many years mining experience, most recently in Brazil. He now makes his headquarters in Toronto, Ontario as a consulting engineer.

The other members were: E. E. Squier ex-'05, James L. Head '16, E. A. Crawford '29, H. C. Miller '39, K. E. Meyer '43, and Warren Wagert '43.

### Tri-State Section

The attendance of the MSM Tri-State Section, Joplin, Mo., held at Wilder's Cafe, May 23, 1947, at 7:00 p.m., was very small, only eight being present. However, a good time was enjoyed by those present. One feature worthy of note was the presence of possibly the oldest living MSM graduate, and one of the youngest. Our oldest graduate being Evans W. Baskett '95, and one of the youngest graduates being Floyd P. Smith '41, Box 333, Lamar, Mo.

Those present were: R. E. Illige '21, chairman; B. H. Rucker Jr., vice chairman '30; M. H. Thornberry '12, secretary; Thomas H. Perry ex-'28, assistant secretary; Floyd P. Smith '41; Earl M. Shank '45; Frank N. Strong '25; Evans W. Baskett '97.

As M. H. Thornberry was leaving for St. Louis soon, Thomas H. Perry ex-'28, 120 Pennsylvania, Webb City, Mo., was elected Secretary to fill out "Thorn's" unexpired term.

A resolution was unanimously passed that the Tri-State Section of the MSM Alumni Association meet the first Thursday of each month at 7:00 p.m., at Wilder's Cafe for a dinner meeting and any other business of importance.

The reason for so few being in attendance was that it was a busy time of the year and many were leaving on vacations or had already gone.

### KEEP IN MIND — HOMECOMING, NOV. 8

Annual Event for Miners Get-together

MSM at Rolla      Missouri      MSM at Rolla



## SECTION NEWS

### Boston Alumni Dinner

By JAMES L. HEAD '16

The contagion of MSM Alumni gatherings has extended even to staid New England, right to the citadel of fair Harvard and austere MIT. As Ed Karraker '32 expressed it, the time had arrived to let some of the people around there know that there was at least one school west of the Connecticut and Hudson rivers. The idea had been simmering for a long time so that a visit to Boston on May 24 by Association Vice President Head offered the opportunity to put the idea into effect. The initial attack was a modest one but it was carried out with enthusiasm and presages bigger and better ones in the future.

Lee DeWald '33 arranged to hold the dinner at the Engineers' Club. How that may compare with the snooty and omnipotent Boston Athenaeum the writer is not prepared to say. Still it's a starter. There's much to be done, however. An inquiry at the Club earlier in the day disclosed the fact that there was to be a dinner there that evening given by the "Massachusetts School of Mining." Could Lee, by any chance, have got us in there under false pretenses!

After the greetings and the cocktails which helped to amalgamate a group ranging from the class of '16 to that of '44, the following sat down to dinner.

Joseph H. Rohloff '21, Mrs. Rohloff and son, Robert H. (Brown University), Providence, R.I.; Edward L. Karraker '32 and Mrs. Karraker, Weyland, Mass.; Howard B. Wyrick '32 and Mrs. Wyrick, Auburndale, Mass.; Lee H. DeWald '33 and Mrs. DeWald, Belmont, Mass.; Morris Boorky '39 and Mrs. Boorky, Worcester, Mass.; Harry Tushman '39 and Mrs. Tushman, Worcester, Mass.; Leonard Stearns, M.S. '42 and Mrs. Stearns, Hartford, Conn.; Fred J. Radavich '43, Cambridge, Mass.; Warren L. Larson '44 and fiance, Miss Priscilla Rogers, Belmont, Mass.; James L. Head '16, New York City, who presided.

The Vice President told of the accomplishments and aims of the Alumni Association after which he pulled off a bit of political skulduggery by announcing that Karraker and DeWald had been "elected" chairman and secretary respectively of the Boston group. Got by with it, too. Ed took over and told of the great interest he had found when he personally got in touch with most of the individuals on the list that had been furnished him. The oldest graduate in the area, and incidentally a paid-up member of the Association, is Francis W. Wilson '84 who regretted his inability to be present that particular evening. One of his unexpected contacts was with Mr. George A. Packard, prominent consulting mining engineer of Boston, who was temporarily professor of metallurgy at MSM in 1907. The new Chairman then called upon each of the graduates in turn to get up and enlighten the group as to his individual activities.

MSM graduates and former students in the New England area are urged to become active in the group. They should get in touch with:

Edward L. Karraker, Shell Oil Company, Box 181, Waltham 54, Mass., phone, Waltham 2793; or

Lee H. DeWald, 16 Horne road, Belmont, Mass., phone, Kirkland 6900.

### Message from Vice President James L. Head '16

(Continued from Page 3)

a plug for the school whenever you hear that any endowments, fellowships or research projects are being sponsored and passed around. Industry, government and individuals are sponsoring these things in increasing numbers. The job can be done at MSM. If not and if something is lacking, the Association will make every effort to remedy the condition.

Contribute anything you can to the endowment fund. Gifts may come from others than alumni. There is nothing to prevent a state school from accepting gifts and bequests.

### Section Heads Listed

These are your section chairmen or secretaries. Contact them for any information regarding meetings of MSM Alumni in the near future.

**James L. Head**, Room 1760, 25 Broadway, New York, N.Y.

New York Section (including Pennsylvania, West Virginia and Virginia and New England states).

**John F. Helmerichs**, 15919 Hazel Ave., East Cleveland, O.; Cleveland Section.

**L. E. Grafft**, 261 Ellsworth street, Gary, Ind. Chicago Section (includes Southern Michigan and Wisconsin).

**Alan H. Hoener**, 6642 Bancroft, St. Louis 19, Mo. St. Louis Section (includes Southern Illinois).

**M. H. Thornberry**, Yates Hotel, Joplin, Mo. Tri-State Section (includes Southwest Missouri, Northeast Oklahoma and Southeast Kansas).

**Joseph Wanenmacher**, 329 Kennedy Building, Tulsa, Okla. Tulsa Section.

**Barney Nuell**, 530 West Sixth street, Los Angeles, Cal. California Section.

**Orval Keeling**, 291 Lebanon avenue, Pittsburgh, Pa. Pittsburgh Section.

**Edward L. Karraker**, Shell Oil Company, Box 181, Waltham 54, Mass. Boston Section.

### Claude E. Davis '43 Addresses Students

On the evening of May 30, Claude E. Davis, a mining representative of the Goodyear Tire and Rubber Company, entertained the mining, civil, ceramics, and metallurgy students at Missouri School of Mines and Metallurgy with movies showing the transportation of materials by means of belt conveyors. One of the films, "Over the Mountain," showed the transporting of the great volume of dirt which was used as fill material for the Anderson Ranch Dam in Idaho. The other film, "The Way Out," demonstrated the adaption of belt conveyors to the transportation of coal in the coal mining industry.

Claude graduated from Missouri School of Mines with a B.S. in Mining in 1943, and, except for a period of service in the army, has been employed by the Goodyear Tire and Rubber Company since that time. During the greater part of the time that he was in the army, he was stationed in Japan where he acted as a technical advisor to the Fuel and Power Division of the U.S. Government's natural resources survey of that country.

While in Rolla, Claude also talked to one of the coal mining classes, his subject being "Coal Mining in Japan."

### Edgar C. Long '30

(Continued from Page 4)

Okla., where he worked as a mucker and then became ground boss. He then took over the job as superintendent of the Zinc Mining operation of the Tri-State district, and next worked as superintendent of the Arkansas Barite Mining operation. In 1941 he became assistant production manager of the Baroid Sales Division of National Lead, the job which he holds now. The mining activities of his present company are chiefly concerned with barite and bentonite.

Edgar is a member of the AIME. Horseback riding and bowling are his favorite off-the-job pastimes.

The State and the Missouri taxpayer can't be expected to provide everything.

In these days of swollen enrollments there is little need to recruit students. Consideration will be given, however, to any promising individual whom you may recommend for admission.

Give an MSM man a job.

Keep the Alumni Office informed on your correct address.

And finally, as some sage has recommended, "if you can't join the construction gang, please don't sign up with the wrecking crew."



# HONOR AWARDS

## Honors Awarded to Outstanding Seniors



Courtesy St. Louis Post-Dispatch  
**KEITH D. SHEPPARD**

Prizes and honors were awarded during the commencement exercises to seniors who have attained distinction in various fields of endeavor.

Having the honor of graduating at the top of his class was Keith D. Sheppard, who had the highest average for his four years work, thus receiving Highest Honors.

First honors were awarded to those seniors whose average grade was ninety per cent or higher. Those receiving first honors were: Kenneth G. Adrian, Richard Dean Amel, Paul M. Bennett Jr., Henry T. Capelle, Paul F. Carlton,

Carl Robert Christiansen, Charles Richard Counts, William Ashley Ellis, M. Gerson Ginzberg, Harold Barnard Harms, Elvin Alfred Henke, George Edward Henry, Robert Ernst Johnk, Virgil A. Johnson, Robert Hall Kendall, Samuel Hutchison Lyle, Mabel Edna Phillips, Keith Darden Sheppard, James A. Smith, Wilbur Paul Tappmeyer, Samuel Tarson, Wilbert Frederick Wegener.

Having an average grade of from 87.5 to 90 per cent, the following Miners received second honors: Cecil C. Bailie, Robert F. Bruzewski, Eloy Menendez Cueto, Harry Clifford Dameron Jr., Arthur Herman Fuldner Jr., Gale Fulghum, Kenneth L. Gille, William Jarrard Goodwin, Philip D. Johnson, Donald Henry Koch, Raymond H. Lahmeyer, Walter Liddell, Robert Franklin Orton, Marjorie Ruth Paul, Robert Edward Pautler, Robert C. Riedmeyer, Richard A. Sperberg, Russell Edgar Stumpe, Walter H. Taschek.

The A. P. Green Award for the outstanding record in scholarship, character, and leadership was won by Robert Ernst Johnk. This award is contributed by Dr. Allen P. Green '35, founder of the A. P. Green Fire Brick Company of Mexico, Mo.

Membership in Phi Kappa Phi requires that its members must have maintained a rank in scholarship in the first tenth of their class. Those elected from the Senior class are: Paul M. Bennett Jr., Henry T. Capelle, Paul F. Carlton, Carl Robert Christiansen, Charles Richard Counts, William Ashley Ellis, M. Gerson Ginzberg, Harold Barnard Harms, Elvin Alfred Henke, George Edward Henry, Robert Ernst Johnk, Robert Hall Kendall, Samuel Hutchison Lyle, Keith Darden Sheppard, James A. Smith, Wilbur Paul Tappmeyer, Samuel Tarson, Wilbert Frederick Wegener.

Sigma Xi, the national honorary research society, chooses its members on proved ability in scientific research. Members are: Donat Benes Brice, Stanley Milton Kulifay.

The following seniors are members of Tau Beta Pi, which signifies that these students ranked in the first quarter of their class and met the requirements as to character, loyalty, personality, leadership, and school activities: Paul M. Bennett Jr., Henry T. Capelle, Paul F. Carlton, Charles Richard Counts, Harry Clifford Dameron Jr., William Ashley Ellis, Arthur Herman Fuldner Jr., Gale Fulghum, Harold Barnard Harms, Elvin Alfred Henke, George Edward Henry, Robert Ernst Johnk, Virgil A. Johnson, Robert Hall Kendall, Walter Liddell, Robert Edward Pautler, Keith Darden Sheppard, James A. Smith, Russell Edgar Stumpe, Wilbur Paul Tappmeyer, Samuel Tarson, Wilbert Frederick Wegener.

## Shell Petroleum Company FELLOWSHIP

at

### Missouri School of Mines and Metallurgy

The Shell Petroleum Company has established an industrial fellowship for graduate research in Petroleum Production Engineering at Missouri School of Mines and Metallurgy.

The fellowship will be in effect during the academic year 1947-48, beginning September 1, 1947. It has been instituted to encourage graduate research in petroleum production and is open to graduate students whose training and experience are such as to qualify them for special study in petroleum production engineering. The opportunity is renewable for more than one year's tenure if warranted by circumstances and it is designed to lead to a Master or a Doctorate degree. Preferential consideration ordinarily will be given to applicants who are Doctorate candidates. To hold the fellowship will not imply that subsequent employment obligations exist either on the part of the Shell Company or on the part of the recipient of the grant.

The Shell Fellowship carries a stipend of \$1200.00 for a year's study. In addition, the Company will reimburse the candidate for actual tuition and academic fees and an allowance up to \$300.00 also is established for purchase of material, equipment, and other expenses related to the research project.

Applicants for this fellowship for the next academic year, beginning September 1, 1947, should write for application blanks or for any further information to

**DR. J. D. FORRESTER,**  
Chairman of the Graduate Committee  
Missouri School of Mines and Metallurgy  
Rolla, Missouri

## ASCE Wins Certificate of Commendation

The MSM chapter of the ASCE has received highest commendation for excellence, effect and meritorious conduct of their affairs in the North Central Region, according to Prof. E. W. Carlton, faculty advisor for the chapter. The award is judged by the annual report of the Chapter's activities sent to the national headquarters of the ASCE.

The North Central Region comprises an area of some nineteen states, and the distinction of receiving commendations is highly prized by those chapters that have received it.

The Missouri School of Mines chapter has been consistently outstanding in their chapter's record, but this is the first time that they have received top rating for the North Central Region. The credit for this honor belongs to the entire membership of the local chapter; however, particular credit belongs to Robert L. Mann '46, who was responsible for arranging the report, and Walt Liddell '47, who had charge of the photographs.

The Woman's Auxiliary of the American Institute of Mining and Metallurgical Engineers awarded the National Chapter Scholarship and the St. Louis Section Scholarship to George James Millers. This scholarship is awarded on the basis of character, leadership, personality, and scholastic standing.

Robert E. Johnk received the Beta Delta Chapter of Alpha Chi Sigma award for the student maintaining the highest scholastic average in the curricula of chemical engineering or science, chemistry major.

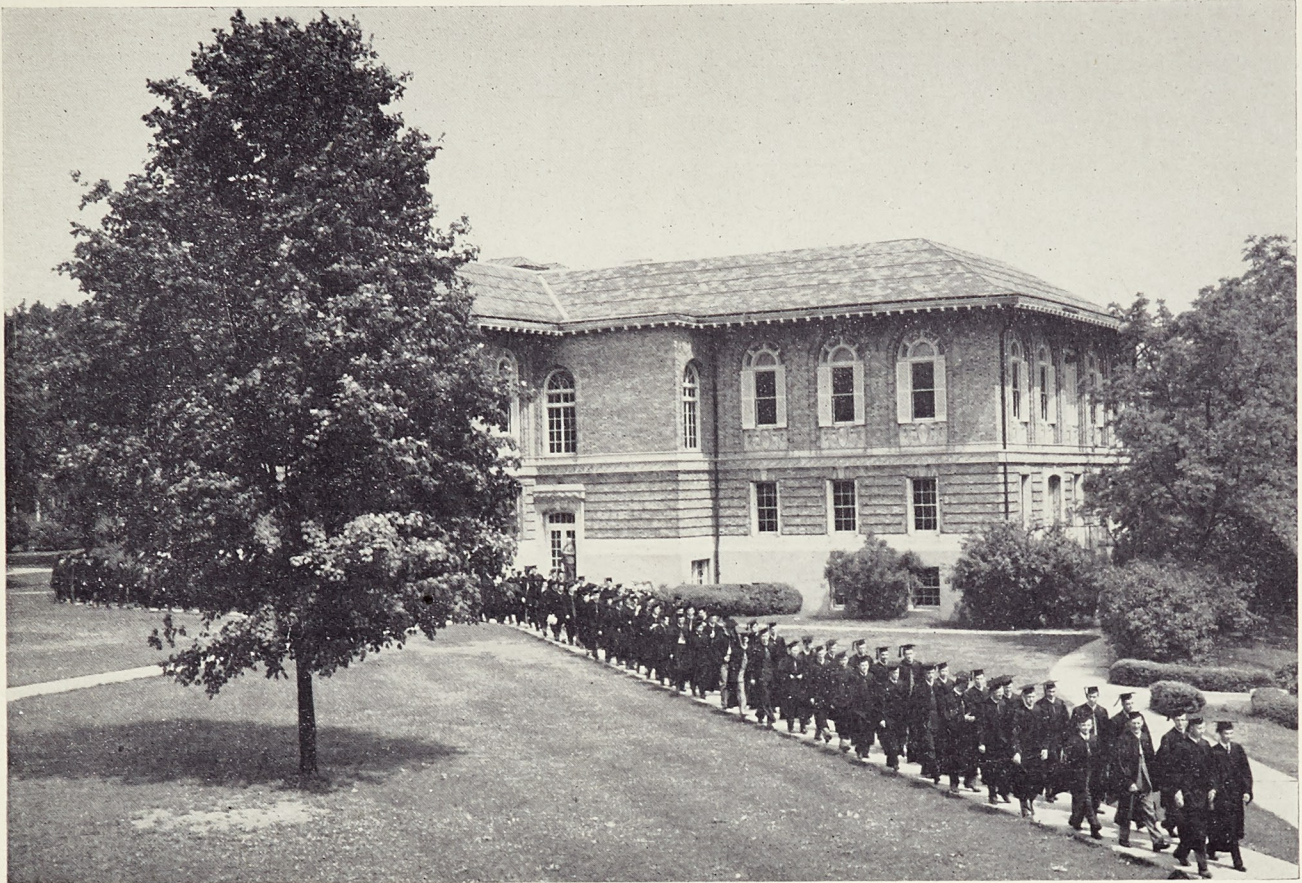
The Kansas City, Mo., Section of the American Society of Civil Engineers award was given to Paul F. Carlton on the basis of character, general scholarship, and student activity.

The second prize award by the St. Louis Section of the American Institute of Electrical Engineers for student papers from Missouri went to Harold B. Harms.

Paul M. Bennett Jr., Reo Eldon Goodwin, George Edward Henry, Robert Ernst Johnk, and Wilbur Paul Tappmeyer won the Lucy Wortham James Scholarships which were established by trustees of the estate of the late Lucy Wortham James in memory of the James family, pioneer iron smelters and operators of the Maramec Iron Works at St. James, Mo.



## ABOUT TOWN AND CAMPUS



Class of '47 crossing the Campus to the Uptown Theater where the Commencement was held.

Photo—Esquire Studio

When, after the long grayness of winter there is a subtle change in the atmosphere, again spring is weaving its magic over Rolla. The students quickly succumb to its spell as the days grow warmer and the sun moves higher in the heavens. It becomes harder and harder to concentrate on calculus, the old brain seems to work a bit slower—spring fever has already set in.

Tulips, forsythia, and lilacs bloom in all their glory giving the campus a new color; while the painters with brushes in hand also do their bit along the line of exterior decoration.

A comprehensive analysis of the hot dog, between a bun complete with mustard, is one of the most popular outside research activities of the Miners. A game of softball is usually synonymous with such outings—the complaint of one hungry picnicker being that it is so hard to catch a ball with a hot dog in his hand. Could it be to paraphrase an old saying: a hot dog in the stomach is worth two in the hand?

The Greek houses finished up the spring social season before finals and their accompanying midnight oil burning, with hayrides and house parties. Something new in campus parties was added this spring in the form of the B & B dance. The first B stands for beauty, the second for beast and the whole affair was sponsored by Alpha Phi Omega, a National Service fraternity, who plan to make it an annual occurrence. Micki Beverage, wife of Lambda Chi, Allan Beverage reigned over the festivities as the beauty; the beast, a cross between a lion, a leopard, and Lena the Hyena stumbled over his tale, while dancing with beauty, Micki.

"Springtime for Henry," a three-act farce, brought grease-paint and props back to Parker Hall for the first time in four years. The MSM Players sponsored the play and their efforts were greatly appreciated by students and townspersons. Several student wives supplied the feminine element.

The "M" Club contributed its "eggs" worth to the spring activities, with the initiation of 17 new pledges, who feel that they now have a special interest in the "Egg and I." The pledges were given an egg apiece to have autographed, and most eggs came to a drippy ending before the end of the day. One pledge sat on his, and testifies that the next he saw of the egg it was well scrambled.

In April, the School of Mines was host to Alumni President Karl F. Hasselmann '25; Vice President Harry Pence '23, and Chairman of the Board of Directors, F. C. Schneberger '25. Karl had just been to the first meeting of the Pittsburgh section, which he said was launched with a lot of enthusiasm from all concerned. The officials met with the Junior-Senior class, and talked to them about the Alumni Association.

Graduating seniors took time out from their studies for senior trips, which were for the most part very extensive this year. The Met department boasted a double-header with two trips—one to St. Louis and Chicago, the other to Salt Lake City, for those interested particularly in Ferrous Metallurgy.

Representatives from concerns all over the country interviewed seniors about that important matter of a job. Many of them doing the interviewing this spring are Miners themselves.

Bill Thias '35 was on the campus April 21 recruiting engineers for his company, the Emerson Electric Mfg. Co., of St. Louis. A few days later, H. K. Ihrig ex-'38, was interviewing for the Kobe Co.; George P. Dahm '42, with the Harrison Abrasive Co., Manchester, New Hamp., and W. L. Goelkel '39 of the Norton-Wheeler Stave Co., a subsidiary of Jos. E. Seagram & Sons, Inc., were representing their

(Continued on Page 14)



# COMMENCEMENT ADDRESS

## The Engineer and American Free Enterprise

By LEWIS E. YOUNG, Mining Engineer, Pittsburgh, Pa.

Highlights of the Commencement Address

Today, the Engineers and the Scientists hold a high place in the esteem of the American public because it is realized that the dominant position of the nation in war and in peace is due in a large measure to our leadership in applied science and engineering.

In recent years the American people have been doing much talking about the "Four Freedoms." While there is no intent to disparage in any way the importance of these Four Freedoms, the American people should not underestimate the importance through the years of two other Freedoms which have been most significant factors in our national development,—namely, Freedom of Opportunity and Freedom of Enterprise. The resourcefulness of our youth and of our inventors, engineers, and scientists is largely a result of Freedom of Opportunity. Moreover, Freedom of Opportunity for the individual is the foundation upon which is built the system of Free Enterprise in American business and industry.

The initiative and resourcefulness of our people in peace has made possible tremendous production in war, and the coordinating of the agencies of research and the pooling of the nation's brainpower have achieved marvelous results.

Freedom of Opportunity and Freedom of Enterprise are the sparks that have kindled energizing impulses,—impulses that have made it possible for so many humble American youths to become captains in the world's greatest industries. Destroy these essential Freedoms and the individual will be spiritless, mediocre, and dull, and industry will become stagnant, sterile, and decadent. The prime source of our national greatness springs from these Freedoms which permit and encourage the fullest development of the human and natural resources of this nation.

A system of Free Enterprise assumes free competition, and that means the survival of the fit; obviously, this results in the elimination of the unfit, the laggards, and those lacking in initiative and imagination. One of the great American leaders in science in the war effort has referred to the "hazard of long-established competence," and he commented that some of the larger and long established American industrial corporations were "complacently confident that they were the last word on certain subjects." They were so sure that certain projects were doomed to failure that some of the smaller corporations were given the opportunity to prove the projects could succeed. Under the Free Enterprise system, long-established competence of great corporations is not revered by the brilliant research Scientist and Engineer. Self-satisfaction on the part of old and powerful organizations may result eventually in decline and failure. Mediocrity of methods and products will result in the ultimate failure of corporations, as well as individuals. One of our economists has said that the American system of Free Enterprise does not subsidize the weak or penalize the strong, but permits the public to profit by the genius of those who give it what it wants.

Industrial progress in the United States under the system of Free Enterprise is due in part to the educational system which has made possible the training of boys of high school age in manual arts. Efforts to popularize mechanics, science, and technology have been most successful; the newsstands contain a number of periodicals planned for this objective. Almost every boy knows something of automobiles, motors, engines, radio, electricity, etc. He has become proficient with tools; he enjoys the making of model airplanes and the salvaging and rebuilding of automobiles that have been junked. It is a real, inspiring game for the American youth to build and construct, to make things run, and to make clever gadgets.

This faculty to invent and build has proven of great sig-

nificance in the American world of Free Enterprise. While this faculty is not exclusively American, it is surely predominant in American youth; when developed in our youth, it is something that lives and spurs us on to excel.

The American system of Free Enterprise has given the engineering profession a splendid opportunity for most constructive work; and, as a result, much of the phenomenal industrial development in the United States has been due to the activities and the enterprise of engineers, inventors, and scientists.

Often we are so close to activities and development that we do not appreciate their significance and proportions. Few of us have realized what has been going on in the United States in the last twenty-five years. We accept modern miracles as if they were commonplace. Sometimes it takes a world war, or other catastrophe, to make us realize what resources we possess, what power we have as a nation, and what we may accomplish if we use our human power and our other resources effectively. Moreover, most of us fail to appreciate the blessings of living in this land of Free Enterprise.

A famous American showman coined the phrase, "Glorify the American girl." It is time that the great service, educational, religious, fraternal, and patriotic organizations start national movements to glorify American institutions, the American way of life at its best, and American Free Enterprise.

A number of years ago, there was heated discussion in certain circles to the effect that there should be a moratorium on scientific research because such rapid progress was being made in science, technology, and engineering that, in the opinion of some, the world might be better off if conditions should be stabilized and standardized. This assumed that the results of progress in some localities and in certain fields of endeavor caused social disturbances that were greater than the benefits of innovations and advances. "The Impact of Science upon Society," "Social Trends," and "Economic Changes" were reviewed and analyzed, and the Scientists and the Engineers were blamed for much of the misery then existing in the world. There were those who favored an "economy of scarcity," rather than an "economy of abundance." Now the situation has changed.

Fortunately, the engineering graduates of 1947 are beginning their lifework at a time when everyone agrees that we need more production. There is a great need for construction of buildings, roads, bridges, etc., all over the world. New programs for industry, new processes of manufacture, and new products await development.

The building of air bases, harbors, and roads in hitherto remote corners of the world has made accessible many natural resources which now can be developed economically. A number of countries having fine natural resources, but only limited capital and few technical men, realize that such resources probably can be made an important source of national income for them, if United States engineers and United States capital can be induced to become partners in the exploitation of these resources.

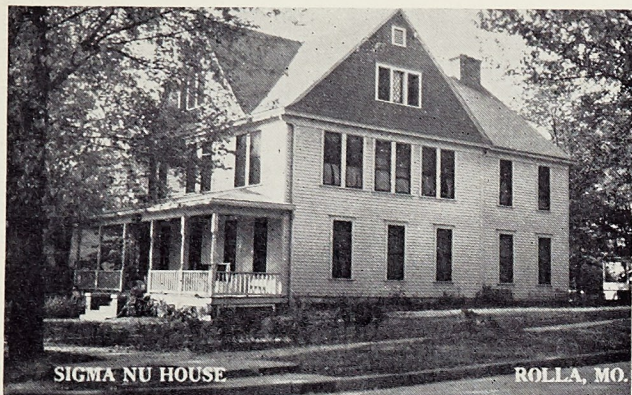
In brief, both at home and abroad the Engineers, Scientists, and Technologists are now recognized as possessing the qualifications necessary to lead the way in increasing production, in reconstruction, and in prompt rehabilitation of countries devastated by war.

The technical world in which we live is not static, it is a world of progress,—it is dynamic. The American work-power is an overwhelming force. It may be directed by the Engineers and the Scientists to accomplish wonders in peace, as well as in war. The technical graduates of 1947 are enlisting in the Engineering Corps of the greatest nation in the world, with unsurpassed opportunities and a share in the responsibility of upholding the high standards of a proud and honored profession.



## FRATERNITIES

**Sigma Nu** By DAVE PETERSEN '48



Over 44 years ago our illustrious founders reaped the reward of their labors, when Gamma Xi chapter of Sigma Nu fraternity was officially installed on Jan. 8, 1903. That date marks the entrance of the first social fraternity on the MSM campus.

Since those first days, a total of 430 active members have been recognized and hailed as "Brothers." At the time of our founding there was an active chapter of 12 men; now there are 57 actives and 13 pledges. Of course these are abnormal times and our enrollment is high, but with normal times approaching we can expect an organization of at least 40 strong.

I have been instructed in preparing this article that I should stick to the "Post-war Era"; so without further ado, I will jump abruptly from the past and predictions of the future to give you the low-down on our activities since the end of our country's hostilities.

On Sept. 2, 1945, our armistice with Japan was officially signed—on that same day a nervous group of freshmen, such as myself, were eagerly anticipating a big semester at MSM. Seeing as how it was my second semester, I had my "bag of tricks" and a Sigma Nu pin to display to a few green first-timers. At that time the house ranks numbers around 35 in all (actives and pledges). The school was small then and you couldn't help but know almost every Miner in town.

Sigma Nu fared well for a couple of months—then it happened—on the day after Thanksgiving came the big fire which ruined the first floor of the house; the second and third floors were smoke and water damaged to the extent of complete redecoration. So we packed up our well blackened belongings and roomed out in private homes in and around Rolla. Here the crisis had come and smacked us square in the face. With the splendid help of our Board of Trustees, our very able officers, and a grand bunch of alumni we kept on an even keel and organized a kitchen in the basement of the parish house of the Episcopal Church. Our hats are off to the Rev. Mr. Jackson for offering us this place to meet—and of course eat some of "Grandma's" good cooking.

The next semester found us living in a rented house on 12th and Pine. The house was small for our needs—to say the least, for then they came, all of the old timers back from service, and our numbers increased by at least fifteen actives and pledges. Things began looking up all along the way; we were meeting the influx of members clear-mindedly and we were enjoying it.

During the summer a few "eager" fellows hung around and caught up on some extra grade points.

September 1946 found us back at 1007 Main once again, in our rejuvenated house. ("Home, sweet home"; it's funny how you get attached to a place.) The chapter really grew that semester; we were in the sixties then, and the housing shortage became a reality to everyone in the fraternity. We

(Continued on Next Page)

**Kappa Sigma** By RICHARD E. MARTING



The Kappa Sigma House

The past year has brought many old faces back to the Kappa Sig house. During the war the membership fell to as low as four men at one time, and often it seemed as if the house would have to be closed, but the boys were determined and managed to keep it running.

Among those who returned married, are "Duke" Blair with one youngster; Jesse Bill Wilson, who has a little girl; Elmer Belew, Glenn Doss, Bernie Sexauer, and Art Tapper-son, who also married during their absence from the campus. Besides these there are many old faces seen around once again, as well as many new faces. Quite a few of the now single fellows will return next fall with a "better half."

The situation around here is quite different now as most of the men instead of graduating at the age of twenty-two are returning at that age as sophomores and juniors. It was the general belief throughout the country that the younger men just out of high school and the returning veterans would not get along well. On the contrary, I have never seen any members of these two groups anything but the best of friends and things seem to be going as smoothly as ever.

During the war those remaining on the campus carried in various sports to add to the already large collection. Among these are two Intramural championship cups; the first two ever to be won by any fraternity. The Kappa Sigs are now busy fighting for another such trophy, but it's anybody's race as there are three organizations separated by only a few points. Yes, it seems that the old blood is still good.

If any of you boys should happen to drop in sometime you will be confronted with a very modernized interior, as the Mothers' Club, Kappa Sigma Alumni Association, and the chapter have all pitched in and put in new additions. But you will find it to be the same old Beta Chi in spirit still holding its many memories of years gone by. Among other things which have remained unchanged are the two faces in the kitchen. Yes, Blanch and "Ink" are still with us; Blanch with her excellent food and friendly smile, and "Ink" with his well known tall stories.

The officers for the past semester were: Harold Telthorst, G.M.; Pete Bolanovich, G.P.; Howard Casselman, G.M.C.; Charles Ecklund, G.T.; Louis Frank, G.S.; Jim Miller, I.G.; and William Schirmer, O.G. Those taking office for the summer are: Arthur Scholz, O.M.; "Duke" Blair, G.P.; Bernie Sexauer, G.M.C.; William Helm, G.T.; Richard Marting, G.S.; Richard Thompson, I.G.; and Donald Ruff, O.G.

We have initiated nine men into the realm of Kappa Sigma brotherhood, and now have five pledges remaining. Insofar as classes are concerned there is a great inequality due to the fact that most of the men left at various times, but all came back as sophomores. As a result, there are 25 men in the same graduation class.



## FRATERNITIES

### Fraternity Man-of-the-Year



PETER VAIDA

Peter Vaida, Lambda Chi, was elected Fraternity Man-of-the-Year by the Inter-Fraternity Council.

This is the fifth award made by the Council; the first one being made in 1943 when William R. Anderson, Sigma Nu was chosen Fraternity-Man-of-the-Year. In 1944, Charles A. Dick, Kappa Sigma, was given the award. In 1945, Elmer A. Milz, Sigma Nu, was elected. Last year, Raymond B. Jones, Sigma Pi, was given the award.

Pete's main activity during the past school year was as business manager of the "Rollamo" which, with the increased enrollment entailed a great deal of intensive work on his part. The "Rollamo," just released, has met with approval on the campus.

### About Town and Campus

(Continued on Page 11)

respective companies.

Interviewing metallographers for the W. A. Shaeffer Pen Company was C. H. Lindsly '25, while Lawrence R. Hinken '40, was talking to engineers about his company, the Velsicol Corporation of Marshall, Ill. Neal Ham '23, district manager with Ingersoll-Rand Co., was recruiting prospective employees for that firm on May 2.

Others were John R. McDonald '39 with the George S. Mephram Corp., East St. Louis, Ill.; Joseph B. Schmitt '42, with the Koppers Co., and R. Vincent Smith, who was a graduate student in 1935, with the U.S. Bureau of Mines at Bartlesville, Okla.

Bachelor of Science degrees were awarded to 161 men, while 24 received their Master degrees. The graduating seniors were older than the average this commencement, most of them being veterans finishing their training which was interrupted by the war. A good number of them are married and some have one and even two children. They are all eager to make a place for themselves in their chosen professions.

The Reverend Ralph M. G. Smith gave his audience something to ponder about in his Baccalaureate address, Sunday, June 1. Dr. and Mrs. Frederick A. Middlebush headed the receiving line in the gymnasium Monday evening when seniors, parents, and the faculty mingled for a last informal gathering. The Commencement Ball followed the reception and was a gay affair, yet with an undertone of nostalgia and "auld lang syne" that a last college dance always seems to impart.

Dr. Lewis E. Young holds a special place at MSM having served as its director from 1907 to 1913. He has watched its growth through the years with much interest and has always taken an active part in the alumni affairs of the school. So it was of special significance that this friend of the school should deliver its Seventy-fourth Annual Commencement address.

### Sigma Phi Epsilon Installed at MSM

The Missouri Gamma chapter of Sigma Phi Epsilon was formally installed on May 10, bringing to a total of 10 the number of social fraternities of the MSM campus.

The members of the Pegis Club were initiated as members of Sig Ep, and three Rolla businessmen, Mr. Cecil Herrman, Mr. Wallace Tucker, and Mr. Charles Tucker, were initiated as alumni charter members of the fraternity.

The initiation ceremonies were conducted by members of the Kansas Alpha chapter from Baker University. The national traveling secretary and the grand secretary of Sigma Phi Epsilon were present at the ceremonies as were alumni members of the fraternity from St. Louis and Kansas City.

Dean Curtis L. Wilson welcomed the new fraternity to the campus at a banquet at the Pennant Tavern, Sunday afternoon, May 11, and Assistant Dean Williams congratulated the fraternity on its installation. The visiting Sig Eps, faculty members and representatives of all the other social fraternities on the campus were guests of the chapter at the banquet.

### Sigma Nu

(Continued from previous Page)

had to crowd in an extra table to feed everyone — the arrangement of those tables, by the way, was an engineering feat in itself. Even with this rapid increase of returning members, we carried out a full scale rushing program to keep a balance of power in the house—looking to the future you might say.

February 1947—this semester got under way with a few new faces. We've come a long way, a year and a half since the war was over, and we're twice the size we were at that time. We feel justly proud of the work of our officers during this rapid expansion period; now we look forward to a rather slow decline.

This semester terminates the college careers of nine brothers, they are: Norman Rankin, Ronald Tappmeyer, Arthur Fuldner, Philips Tucker, Henry Kruse, Jack Faser, Dane Boyd, Samuel Lloyd, and James Snowden. We that are left offer them our best wishes for happy and prosperous careers; we hope that you, our alumni, will receive them warmly if it may be your opportunity and good fortune to meet them in the business world.

Now, I'd like to bring out a few items of note that have occurred to me during this dissertation.

"Grandma," our super cook, is completing her nineteenth year as kitchen queen and the only true lover of a good many guys—Sigma Nu threw its biggest and best St. Pat's Tea Dance this year—our trophy collection is starting up with leaps and bounds again; we lost all of our old ones in the fire—we lost old "Wurty," our trusty house dog; he died shortly after the fire—we have a new charter and charter case; yes, the old one got burned up—recently elected officers for the summer semester are John Glaves, commander; Gene Moniak, lt. commander; Dick Howell, treasurer; and Joe East, recorder.

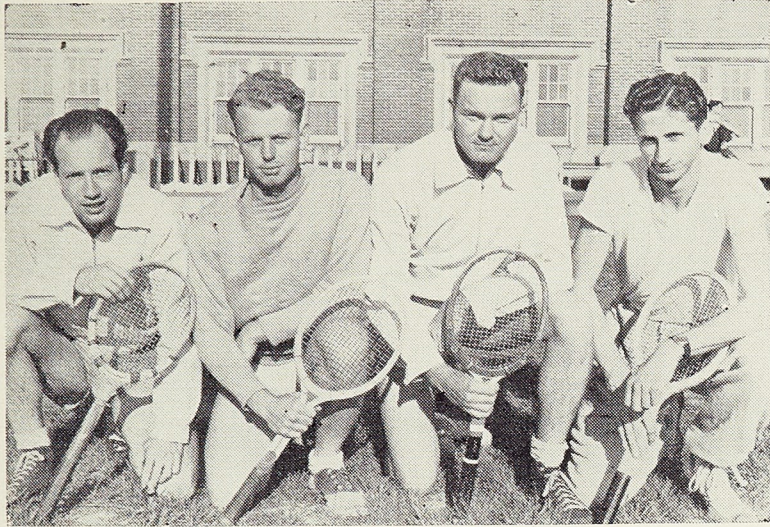
### Hobby Becomes Business

Building model trains, the boyhood hobby of Belding H. McCurdy '38, has developed into an unusual business venture. Belding built model trains to amuse himself when he was in an Army hospital after being returned from the Philippines, and continued his hobby while working as an electrical engineer. Demands became so great that he gave up his job and formed the Model Railroad Specialty Co., which is now selling model railroad supplies and equipment both locally and by mail throughout the world. The Company has three retail stores in Kalamazoo, Ann Arbor, and Jackson, Mich. Belding McCurdy is president of the Model Railway Specialty Company, located at 909 Southwest avenue, Jackson, Mich.



# ATHLETICS

## MSM Athletes Win 3 Conference Championships By JERRY BERRY '49



The 1947 MIAA conference champions: Gene Weber, Fred Canning, Charlie Ross, and John Graves.

Varsity athletic awards were made to 28 men. All of the team will be playing again this fall with the exception of graduating seniors, Gale Fulghum, Anton Leone, John Hazelett, Gil Carafiol, and Jim Stephens.

Next came basketball and the Miners after a successful start against non-conference teams dropped all their games in conference competition. Kirksville's great team won the title being defeated only once during the season, and winding up with a record of 28 wins and 1 loss. The Miners held a half time lead over the Kirksville team in their first meeting—the only team that won that honor all year. The season's record for the Miners was 7 wins and 13 lost. Bob Bruce and Ronald Tappmeyer are the only players leaving via graduation and next year's team should fare a little better.

The third conference championship of the year was brought home by the MSM golfers when they captured the honors in the MIAA meet held at Cape Girardeau. Coach John A. Steinmeyer praised the team for their willingness to participate in the extra practice required of championship teams. Tony Pantaleo and Eddie Sands were the stars of the team and the splendid work of Kramer, Colgin and Young made it a well-balanced team.

In spite of the difficult scholastic standards, MSM athletes placed high in the MIAA conference standing during the past year. Annually weak because of afternoon labs, more credit hours work per semester, etc., the MSM teams surprised the teachers colleges in competition this year.

The first MIAA conference sport on the agenda was football. Coach Gale Bullman, back at MSM after a three year tour in the Navy, piloted the team into second place in the conference. The Miners lost to the Cape Girardeau Indians 26-6 for the championship. The conference results for MSM were as follows:

MSM 20 vs. Warrensburg	0.
MSM 25 vs. Maryville	0.
MSM 12 vs. Springfield	0.
MSM 13 vs. Kirksville	13.
MSM 6 vs. Cape Girardeau	26.

For the second straight year MSM cagers brought home the championship cups for both the singles and doubles championships in tennis. The MIAA tournament was held at Cape Girardeau and the Miners easily defeated all comers. Graves and Weber of MSM won the doubles title and Graves captured the single championship after defeating Weber in the finals. Tennis awards went to Graves, Weber, Osborne, Canning, and Charley Ross.

The MSM Splashers enjoyed their best year in a decade. Under the tutelage of Coach Chester Bernard the swimmers captured every meet but one. The MIAA held their first swimming championships in the history of the conference on Feb. 20 and 21 at the Rolla pool. The Miners took every first place in the meet giving them the distinction of holding the conference record in every event. Cape Girardeau was runner-up and Maryville placed third.



Pictured above is the MSM Golf Squad, MIAA champions for 1947. Reading left to right: McColgin, Young, Sands, Pantaleo, and Kramer.



## ATHLETICS



Trackmen who graduated in June are: Kendall, Bush, Carlton, and Liddell.

The Miners track team took second in the MIAA Conference Track Meet losing to the Cape Girardeau Indians. Held on May 24 it was the largest and most successful meet ever held by the MIAA. A total of 137 tracksters participated, marking the return to pre-war track competition. The Miners garnered three firsts; the low hurdles, mile and two mile. Over the entire season the high point MSM men are King with 68, Kirk with 57½, Turner with 38½, Swartz with 25, and Burke with 22.

### News Items Wanted

The Alumni Magazine is a record of the accomplishments and histories of MSM Alumni and it takes the cooperation of all the alumni to keep the magazine within the scope of its purpose. Those of you who have been recognized with promotions, or who had changes in status, or changes in jobs, or a news of any kind will find that your various friends in the Association will welcome a chance to read about it in the columns of the Alumni Magazine.

President Hasselmann is also anxious to carry more articles like that by R. G. Knickerbocker in the last issue and that by Robert Elgin in the current issue. Articles up to 1000 words in length of this nature are always welcomed by the editors of the magazine.

The editors are continually striving to find items concerning the alumni to make up the magazine. If your name is not mentioned at a time when you have had some unusual experience, it is because the editors did not know about it. Take your pen in hand and write that experience about the new baby, or about the new wife, or the new job, giving complete details, and you will see it in the next issue of the "Alumnus." It is this kind of material that makes the magazine of interest; and in gathering that material, cooperation is needed from everybody concerned.

Mail any news items to the Editor, MSM Alumnus, Rolla, Mo. The Association welcomes comments and suggestions on the content of the "Alumnus."

### George A. Easley '09 Elected Director of Empire Trust Company

George A. Easley has been elected a director of the Empire Trust Company of New York City, it has been announced by the President of the company. He is also a director of the First National Iron Bank of Morristown, N.J., vice president and treasurer of the International Mining Corporation, vice president and director of the Bolivian International Mining Corporation, and director and chairman of the Board of the Gulfboard Oil Corporation.

Dr. Easley received his E.M. in 1912, and was awarded the degree of Doctor of Engineering, *honoris causa*, in 1938.

He is a member of Kappa Alpha fraternity, Tau Beta Pi, he was on the track team, and was business manager of the Rollamo, business manager of the Minstrel Troupe, and treasurer of his class while in school.

He has been active in the Alumni Association serving as vice president from 1931 to 1933, and president from 1935 to 1937.

### New Alumni Directory Planned

Plans are being made for a new Alumni Directory to be off the press in time for the Seventy-sixth Homecoming this fall.

The last directory came out in 1936, and since that time MSM has added over a thousand new graduates to its roster. A questionnaire will be sent out in the near future to all living alumni, and it is hoped that all will cooperate, and return it as soon as possible with the desired information.

### "Red" Niedermeyer '28 Becomes Life Member

O. D. Niedermeyer recently became a life member of the Alumni Association. Since his graduation "Red" has worked in Mexico and Bolivia and at the present time is General Manager of the Compania Minera de Oruro in Oruro, Bol. He received his professional degree of Mining Engineer from MSM in August, 1943. When he was in school "Red" was an outstanding athlete winning his "M" in basketball and football.

### Ceramics Alumni Dinner



Front row, left to right: W. E. Crockett '41, T. J. Planje '40, J. A. Crookston '42, H. D. Bixby '48, C. E. Shulze '47.  
Back row, left to right: B. Cohen '48, R. S. Green '33, C. A. Freeman '28, W. J. Smothers '40, C. A. Lambelet '43, N. R. Sewell '47, P. G. Herold, R. C. Weigel '34, F. J. Zvanut '32.

Miners attending the Convention of the American Ceramic Society in Atlantic City, gathered at the Kent Restaurant, April 23 for an Alumni dinner.

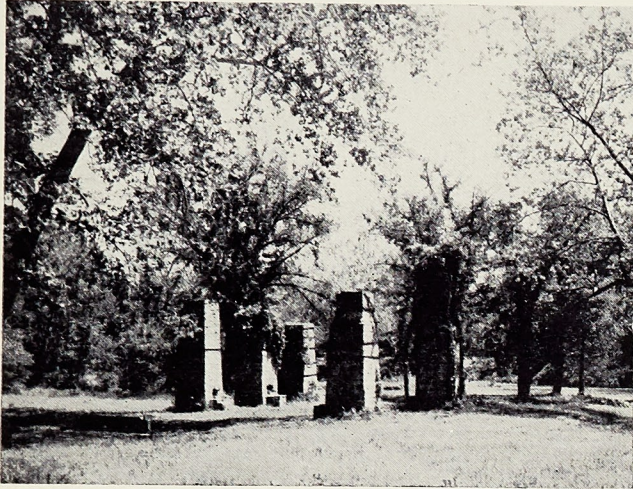
Charles A. Freeman '28, the first graduate of the Ceramic department, served as toastmaster. Dr. Paul G. Herold, chairman of the department, gave a report on the progress of the Ceramic department at MSM in recent years.



# MARAMEC SPRING DEVELOPMENT

## Conservation and Recreational Development

By ROBERT ELGIN, C.E., '37  
Representative of the James Foundation at Maramec Springs



A spot at Maramec Springs where probably every Miner has eaten a picnic lunch.

The Maramec Spring tract in Phelps and Crawford Counties, owned by the late Lucy W. James, is being developed by the James Foundation as a public park as part of the program of philanthropic activities in memory of Mrs. James being carried on by the New York Community Trust. The James Foundation is the administrative agency in Missouri.

The Maramec Iron Works, founded by Thomas James and Samuel Massey, produced its first iron on April 9, 1829, a little more than 118 years ago. From the date of the first pouring until 1874, when the plant was closed because it was no longer profitable, the Maramec Iron Works played an important role in Missouri mining, smelting, and iron products manufacture.

The work being carried on at the Maramec Springs tract today will assure future students of mining and history an opportunity to study the remains of one of the midwest's earliest iron works.

The iron works played an important role in the location of the Missouri School of Mines and Metallurgy at Rolla. When the State was seeking a location for the new school more than 75 years ago, the citizens of Phelps County pointed to the Maramec works as a logical reason for locating the school within the county. The iron works, they said, would provide a nearby, practical demonstration of iron ore mining, iron smelting, and the manufacture of iron implements. The school was subsequently awarded to Rolla, the town which raised the largest building fund.

The site of the old iron works is marked by a few cabins, the furnace, five forge stacks, and many crumbling foundations. No restoration work is to be done, but the remaining landmarks will be preserved.

Maramec Spring itself, which turned six waterwheels while the iron works was in operation, is the sixth largest spring in Missouri. The spring flows an average of 96,300,000 gallons of water daily. The spring branch, which flows one-half mile through the James estate to the Maramec river, has been stocked with rainbow trout and is open to public fishing without charge.

Maramec Springs has long been a favorite recreation spot of the surrounding territory. In the old days, MSM students often rented horse and buggy transportation from the Rolla livery stables and brought their girl friends to Maramec for a day's outing. Students still come to Maramec for picnics. It isn't unusual during the week-end to see a Miner reach in to the spring branch and haul out a bottle of previously

planted beer.

Since the largest number of visitors come to Maramec for recreational purposes, this program was considered the most important. The recreational plans call for the installation of facilities such as shelters, comfort stations, public water supply, picnic tables and grills, parking lots and trails leading the visitor past places of natural beauty, through historical areas and along wild flower trailways. In addition, playgrounds will be built. A Boy Scout cabin has been provided for the St. James troop and in the future Scout camping facilities are to be expanded and will be available for other troops of this area.

Technicians of the Conservation Commission of Missouri made a study of the tract and worked up a wildlife management and timber management program in cooperation with the James Foundation. The Maramec Spring farm, which was managed by Mrs. James for many years as a private game refuge, has been established as a state wildlife refuge.

Under a cooperative agreement between the State of Missouri and the James Foundation, the estate will be managed especially as a producing area for deer and wild turkey, although all kinds of game will be given protection.

A new concept of soil fertility as the basis of wildlife production will be given a trial at Maramec. For the first time on such a large area, fertilizer will be used specifically for the purpose of improving food and cover conditions for wildlife.

It has been discovered that soil fertility as reflected in the quality of wild foods, has a direct influence on the reproductive rates of wild animals, just as it does on domestic animals. As the Maramec Spring refuge begins to produce surpluses of deer, wild turkey and other game, these surpluses will move out and repopulate the surrounding areas, or be live-trapped and used to restock depleted sections of the state.

The wildlife management practices recommended by the commission will call for waterholes to be constructed in water deficient sections of the estate. This is primarily for turkeys, which prefer to nest close to water. A minimum of one waterhole for 40 acres of woodland is needed for turkeys.

The edges of all waterholes, roads, fences, trails, fields, gullies, ditches and other waste areas will be fertilized and limed to encourage growth of legumes and grasses which are beneficial to deer and turkey. Fertilizers to be applied on a test basis include 200 pounds an acre of 33 per cent ammonium nitrate, 200 pounds an acre 45 per cent triple phosphate, and 100 pounds an acre of 48 per cent muriate of potash.

Small food patches of alfalfa, winter barley, chufa and atlas sargo will be provided in suitable flat fields in the area. All of these patches will be limed and fertilized. Sweet clover and seresia lespedeza will be planted along the edges of fields, gullies, ditches and other waste areas.

Timber management will be practiced in conjunction with game management. The Conservation Commission has drawn up an extensive timber management plan. Improved forests mean not only more game but also more attractive natural scenery.

Much of the Maramec Spring tract was cut over for hardwood timber to make into charcoal for iron making. As a result, all of the estate except small areas around the spring and farmstead have been cut over once or twice for charcoal timber.

Repeated cutting has already reduced the number of trees of the more desirable species. Extensive tracts formerly covered with good stands of trees now support only scrub. Of the 1600 acres in the estate, 1104 acres is in some sort of timber growth. This is made up of 738 acres of productive timber land, 300 acres of non-productive and semi-productive land, and 66 acres of black jack.

(Continued on Next Page)



## ALUMNI PERSONALS

### Births

A daughter, Susan Elizabeth, was born to Gloria and Don Fink '47, on May 6, in St. Louis, Mo.

Mr. and Mrs. Woodrow L. Burgess of Bartlesville, Okla., announce the birth of a son, John Clint on March 31. "Woody" graduated in 1940.

### Deaths

Holman T. Marshall '16, chief engineer of the Nevada Mines Division of the Kennecott Copper Corporation died April 13 in Ruth, Nevada. "Marco" was a member of the AIME and well known in Nevada mining and engineering groups. While at MSM he was on the Student Council and was interested in athletics, receiving his "M" in track and he also served as class basketball captain, and secretary of the athletic association. He was a member of Sigma Nu fraternity. "Marco" was active in civic affairs and at the time of his death was chairman of the Ruth School board and president of the White Pine county board of education. He is survived by his widow, two sons, Frederic D. Marshall of Pittsburgh, Pa., and H. T. Marshall Jr. of McGill, Nev., and by his mother, Mrs. Maude Marshall of Ruth.

Paul N. Ashlock ex-'26 died May 27 in St. Louis, Mo. He had been with the District Corps of Engineers for 27 years, and served as a Major in World War II. He was superintendent of the Engineers Service Base in St. Louis. His brother is Evan E. Ashlock '20.

John T. Keenan '17 died at his home in Providence, R.I., on May 30, 1947. While on the MSM campus he was a member of the local Sigma Nu chapter.

### Weddings

Miss Norma Rouse of Salem, Mo., and Lt. Donald H. Short '43, were united in marriage Easter Sunday at 4:00 p.m. The double ring ceremony took place in the Navy Chapel in Bremmerton, Wash. Don was an instructor in the Civil department at MSM the fall semester and recently joined the Navy. Lt. and Mrs. Short will make their home in Bremmerton, their address is Box 237, Route No. 5.

Miss Denyse Graux of Paris, France, and Robert Frederick Davidson '41, were married May 16 at St. Patrick's Catholic Church in Rolla. They were attended by Prof. and Mrs. David Walsh '23. Mr. and Mrs. Davidson have the honor of being the first couple to be married in the new

Catholic Church in Rolla.

Freddie met his bride during the liberation of France. He was serving as an officer in the American Army and became acquainted with Commandant Graux of the French Engineers Corps, and later met his daughter, Denyse.

The bride arrived in New York at the end of March aboard the S.S. Queen Elizabeth. Freddie is a member of the faculty of the Department of Mechanics at MSM and the Davidsons are at home at 2002 Vichy road.

Miss Shirley Pauline Gedrow and James C. Johnson '43 were married Saturday, May 17 in Albany, N.Y. Jim works for the Monsanto Chemical Co., in Norfolk, Va.

Miss Sue Kimberlin of Bourbon, Mo., became the bride of Frank W. Hughes '42 on May 20 at St. Patrick's Catholic Church in Rolla. Mrs. Hughes attended the University of Missouri where she was a member of Chi Omega Sorority; she has been employed at the U.S. Geological Survey for the past year. After graduation from MSM, Frank served as a Captain with the Airborne Engineers in the U.S. Army, serving a year on Saipan. He is now employed as a civil engineer with the U.S. Geological Survey. After graduation from MSM, Frank served as Captain with the Airborne Engineers in the U.S. Army, serving a year on Saipan. He is now employed as a civil engineer with the U.S. Geological Survey in Rolla.

Miss Irene Davis '43 was one of the first local girls to join the list of "June brides" at an afternoon ceremony on June 1 at the Methodist Church in Rolla, Mo. The bridegroom, Raymond L. Sanders, formerly of Independence, Mo., is a sophomore at the School of Mines, after two years service in the Naval Air Forces, stationed in the Pacific. Mrs. Sanders graduated from the School of Mines in 1943, majoring in Chemistry, and is doing graduate work at MSM at the present time. The young couple will be at home at 705 Main street.

Sam Lloyd '47, son of Prof. and Mrs. S. H. Lloyd, and Leota Faulkner, daughter of Mr. and Mrs. Rex Faulkner of Rolla, Mo., were married in Mammouth Springs, Ark., on Wednesday, June 4.

Sammy is the son of Prof. S. H. Lloyd '21 of the MSM faculty. He is a member of the graduating class of '47 and received his degree in Mechanical Engineering on June 3. He is a member of the American Society of Mechanical Engineers, and of the local chapter of Sigma Nu.

### Development of Maramec Spring

(Continued from Page 17)

The productive areas support red oak, white oak, and a few other species. The less productive areas are covered with black jack, oak and hickory.

The Commission has recommended that the productive areas be given a light sanitation treatment to remove defective trees. Open patches of these areas are to be planted with white and red oak acorns. The sanitation treatment, which will be completed in 10 years, is expected to yield about 60,000 board feet of lumber and 1000 cords of firewood.

The post black jack oak trees will be given a light pre-planting release cutting during the summer months to remove dead and dying trees. This area will be planted with shortleaf, jack or Virginia pines planted in the natural openings at the rate of 250 seedlings an acre.

Mature trees, except in the public use area will be cut from year to year as a crop. This will provide lumber for construction purposes and will make space for young trees.

The Maramec Spring development is unique in that it consolidates the features of a state park, a wildlife refuge, and a national monument. Yet the work is being done by a private organization and no admission or other charges will be made for the use of its facilities.

### G. C. Cunningham '25

(Continued from Page 5)

was assistant superintendent in various refineries from 1935 to 1941 and during that time placed into operation many of the newer refining processes which were later to prove of great value in the war. During the war, he served on various industry-government committees concerned with increasing production of aviation gasoline and lubricants. Presently holding the position of superintendent of the Woodriver, Ill. refinery, he is in charge of all refinery operations.

"Clem" has a family of two boys and one girl. He is an outdoor sport enthusiast, his favorites being golf, hunting and fishing.

### Homecoming November 8

Homecoming has been set for Nov. 8, according to Dean Rex Z. Williams, chairman of the Homecoming Committee. The Miners will meet Cape Girardeau State College on the gridiron Saturday afternoon.

Members of the Homecoming committee are Dean Rex Z. Williams, chairman, R. F. Davidson, J. F. Rushing, S. J. Pagano, and D. F. Walsh.

Details are being worked out, and will be announced in coming issues of the Alumnus.



## ALUMNI PERSONALS

1891

Mrs. Jessie Heller Boyer ex-'91 is living at the Chancellor Hotel, 3191 West 7th street, Los Angeles 5, Cal.

1893

J. C. Reid is living at 408 Main street, Osawatomie, Kan.

1902

Ben N. Norton resides at 1513 North Campbell street, in El Paso, Tex.

1903

Fred Hauenstein owns the Cima Vista Ranch, R.R. No. 1, Box 856, Exeter, Cal.

1904

G. W. Harris is associated with the San Francisco Mines of Mexico, Ltd., San Francisco Del Oro, Chihuahua, Mexico.

John S. Schroeder is now living at 2032 North Las Palmas, in Hollywood, Cal. However, after the first of September his address will be 21420 Arcos drive, Woodland Hills, Los Angeles, Cal.

Clarence Woods is President of the Inca Mining and Development Co., Tirapata, Peru. His address is 601 Vann Ness avenue, Los Angeles 5, Cal.

1905

Bruce Williams ex-'05 can be reached at the Bruce Williams Laboratories, 620 Joplin street, Joplin, Mo.

1906

Frank B. Powell lives at 605 W. 11th in Rolla, Mo.

1907

Ira L. Wright is a mining engineer in Silver City, New Mex.

William P. Hatch recently moved to 71 Hamilton street in Wollaston, Mass.

Andrew J. Seltzer has retired and is living at 2419 Woodruff avenue, Temple City, Cal.

1908

Clyde R. Wood and Mrs. Wood from Buffalo, Wyoming, were in Rolla in April for a two weeks vacation.

1909

A. Emory Wishon gives 245 Market street, San Francisco as his mailing address.

R. H. B. Butler who is a British Consul, gives his address as British Consulate General, 360 Michigan avenue, Chicago 1, Ill.

1910

B. F. Murphy has been promoted to the position of General Manager of the St. Joseph Lead Company of Bonne Terre, Mo. He has been with the company for many years and was, until recently, Assistant General Manager.

Albert Park can be reached at Box 840, Casper, Wyoming.

Harmon E. Minor is chief geologist for the Gulf Oil Corp., in Houston, Tex. His address is 1408 Missouri avenue, Houston.

John D. Harlan gives 903 Union, Seattle 1, Washington as his mailing address.

John E. Schultz can be reached at 3617 Hanover street, Dallas 5, Tex.

Charles W. Traughber gives 300A East University parkway, Baltimore 18, Md., as his mailing address.

1911

E. W. Engelmann is with the Utah Copper Division of the Kennecott Corporation. Ed lives in Magna, Utah.

D. L. Forrester can be reached at 5914 Fourteenth St. N.W., in Washington, D.C.

H. L. Tedrow is with the El Paso Mines, Inc., Cripple Creek, Colo.

1914

Lee Bowman ex-'14 has been connected with the Scott County Milling Company, first in the operating end, and since that time in the sales department. He has been Secretary and Sales Manager of this company for several years. Lee has two boys: John, an Annapolis graduate, and Lee, a former pilot in the Air Corps, now back at Missouri University finishing his education.

1915

A. L. "Jinks" Kaplan who strayed from the engineering path owns the Kaplan Drug Store in Tulsa, Okla. Jinks' address in Tulsa is 1339 South Rockford, Tulsa 5, Okla.

1916

### NOTES BY J. H. HEAD

The trip to Pittsburgh on April 19 with Alumni President Karl F. Hasselmann, to organize an alumni group in that city, was the occasion for a reunion with some old classmates. It was the first time I had seen Orval Keeling since I left Rolla. Orval, or Bill as he is more generally known, started with us in the fall of 1912 but dropped out after our Junior year. He returned, however, to acquire a B.S. in 1923, an M.S. in '24 and a Chem. Engr. in '27. Still working at it; with the Koppers Company. He was the unanimous choice to head up the new Pittsburgh Section. We had the pleasure of also meeting Mrs. Keeling and Bill Jr.

A more familiar face was that of Louis A. Turnbull whose official class is 1922 but who keeps us his allegiance to 1916. He is with the U.S. Bureau of Mines and makes his headquarters at the Pittsburgh Station of the Bureau. Mrs. Turnbull accompanied him to the party.

It was disappointing not to see Jimmie Dowd and Fred Grotts. Jimmie was still in Alabama on work for the Bureau and Fred was also out of town.

Not much news of our other classmates. However, in checking over the lists of paid-up members of the Alumni Association I find that most of us are still active participants in alumni affairs. These are Beyer, Bower, Cole, Dean, Doyle, Dunham, Grotts, Head, Hoppoch, Johnson, Kamp, Kayser, Keeling, Krebs, Miller (Life), Scheurer, X. Smith, John Schuman, Stifel (Life), Tompkins, Ude, Woolrych and Vogel. An interesting fact is that seven of those named did not graduate. No other class can show as many Association members among its non-graduates.

Won't you please assist me in rounding up the "lost" members of our class? Don Morgan is the only one of our graduates who has escaped me although Red Maher and Walter Weissbach who received their degrees with us are also missing. But I'm looking for such active former classmates as Jimmie Allen, Roy Bennett, Wallace Boyle, Jimmie Hanrahan, Otto Mitt, Lou Ehlers, Eugene Campbell, Shorty Corey, Harold Hubbard, the Marquiss brothers, Bob Miller, Cliff Siegrist, Harry Trowbridge, and a host of others.

Out-of-town Firemen calling on me at 25 Broadway, New York City, will now find me in Room 1726. After twenty-four years with Chile Exploration Company I have just been taken over by the parent organization, Anaconda Copper Mining Company, to be the resident engineer in the New York office for the Mining and Exploration departments of Anaconda. The general idea is that I am to be the informed buzzer-boy on what is happening in Anaconda's ten mining organizations in the Western United States, Mexico and Chile and the numerous exploration projects extending from Canada to Brazil. It's fun, too.

Hugo Koch lives in Hannibal, Mo., at 608 Mound street.

Walter W. Kiskaddon ex-'16, can be reached at P.O. Box 241, Mt. Carmel, Ill.

Mr. E. G. Deutman lives in Cuba City, Wis.

1917

John G. Reilly has been promoted to Managing Director of Cia De Real del Monte y Pachuca, Hidalgo, Mex.

Major Emmett L. Arnold gives P.O. Box 1423, Balboa, Canal Zone as his mailing address.

Fred P. Shays can be reached at P.O. Box 711, Beeville, Tex.

Wilson V. Bayha ex-'17 is working in the Engineering department of the Baldor Electric Co. He resides at 515 Tiffin, St. Louis 21, Mo.

1918

H. Smith Clark resigned from the Sinclair Prairie Oil Co. at Fort Worth, Tex., in April. He has been Chief Geologist for the Southern Division of the company for the past twenty years. He will open a consulting office in Fort Worth in the near future. His home address is 2307 Warner road, Fort Worth 4, Tex.

James P. Gill is Vice President of the Vanadium-Alloys Steel Company in Latrobe, Pa. His home address is 850 Weldon street, Latrobe.

Hanley Weiser is Works Superintendent for the Nassau Smelting and Refining Co. He lives in Prince Bay, New York at 5769 Amboy road.

Raul Chavez is a mining engineer and can be reached at Juarez 4708, Chihuahua, Chin, Mex.

1919

L. B. Benton is an oil operator and consulting geologist with offices at 1201 Ft. Worth National Bank Bldg. in Fort Worth, Tex. His address is 3332 Ryan avenue in Fort Worth.

### Degrees Awarded to Drs. Young and Caples

(Continued from Page 1)

ground subsidence as well as numerous technical papers. He is a member of many professional societies such as the Mining and Metallurgical Society of America, the American Mining Congress, the Coal Mining Institute, and the American Institute of Mining and Metallurgical Engineers of which he served as Director from 1937 to 1942 and Vice President from 1942 to 1945.

Russel Bigelow Caples Jr. graduated from Missouri School of Mines in 1910 receiving a degree in Mining Engineering. He worked a short time in the mines in the Coeur d'Alene district in Idaho, and then he went to work for the Anaconda Copper Mining Company as a junior engineer in the Testing department.

Dr. Caples did experimental work on the electrolytic zinc process, and he in collaboration with two other engineers brought the electrolytic zinc process out of the laboratory

and made it a commercial reality. He was made Assistant Superintendent of the electrolytic zinc plant at Anaconda and was later made Superintendent of the zinc plant at Great Falls, Mont. At the present time he is manager of the Great Falls reduction department and of the treating plant at East Helena, Mont.

Active in promoting safety and welfare programs for the workers, Dr. Caples deserves a large amount of the credit for the spirit of cooperation that exists at Great Falls between the management and the workers.

He has been active for many years in the Montana section of the AIME, and he is a member of the American Zinc Institute.

Dr. Caples has taken a great interest in community activity and has been president of the Community Chest Board at Great Falls as well as having been a director of the board for many years. He is a past president of the Kiwanis Club, a member of the School Board, and a director of the First National Bank.



June, 1947

# ALUMNI PERSONALS

1920

Tom W. Leach is a geologist with offices in the Hunt Building in Tulsa, Okla.

M. T. Terry can be reached in Tulsa, Okla., at 7 W. 14th street, c/o Ambassador Hotel.

George Burnet lives in Omaha, Neb., at 529 South 31st avenue.

1922

Roland J. Lapee was a campus visitor on May 8. A flying enthusiast, Roland flew his own private plane from Great Falls, Mont., to visit in Sullivan, Mo. He has recently been promoted to Plant Metallurgist for the Anaconda Copper Mining Company at Great Falls, Mont., taking the position made vacant by the death of H. M. Doran ex-'19, who died last year. Roland's home address is 23 Smelter Hill, Great Falls, Montana.

Roger I. C. Manning is a mining engineer with the Arizona Department of Mineral Resources. His address is Route No. 2, Box 300, Phoenix, Ariz.

G. S. Wyman is in Chuquicamata, Chile, with the Chile Exploration Co.

Edward J. Torrence is mill metallurgist for the Braden Copper Co., Rancagua, Chile.

George L. Richert has moved to 2304 North Jordan street in Oklahoma City, Okla.

1923

E. Taylor "Polar Bear" Campbell is now a senior engineer with the Department of Highway Planning of the Missouri State Highway Department. The Chief of Party, on the Road Inventory Survey, "Polar Bear" is now in Jackson County revising the department base maps of that county. His permanent address is 857 Kings avenue, Springfield, Mo.

Cecil A. Turner is living in San Gabriel, Cal., at 737 N. San Gabriel Blvd.

Wayne Shannon Frame was in Rolla, May 14. Wayne is with the Union Electric Co. at Bagnell Dam.

Warren E. Ten Eyck can be reached at 411 Jergins Trust Bldg., Long Beach 2, Cal.

Mr. Neal Ham, district sales manager with the Ingersoll-Rand Company of St. Louis, was on the campus May 2 interviewing seniors for employment with that firm.

1924

Robert C. Zevallos is handling the industrial advertising for Dorland Inc., 247 Park avenue, New York City.

G. T. Dierking has been out of the United States most of the time the last seven years. He was called to active duty in 1939 in the Civil Engineer Corps, U.S. Navy, at Pearl Harbor, and was "initiated" by the blitz of Dec. 7, 1941. In 1943, he was raised to the rank of Commander and sent to the southwest Pacific as officer-in-charge of the 301st Construction Battalion assigned the duty of dredging harbors, building piers and docks, clearing harbors of sunken ships and rendering aid to shore based battalions. He was then appointed Assistant Public Works Officer at the Naval Station in Norfolk, Va., and released from the service in May, 1946. George is now back with his old company, Ford, Bacon and Davis Construction Corporation. He is temporarily working in Denver, and his permanent address is 805 South Grand, Monroe, La.

Arch W. Naylor, II, is living at 1962 South Point View, Los Angeles 34, Cal. Arch's son, Arch W. Naylor, III, is considering enrolling at MSM this fall.

Andrew Devereux gives 7941 Dobson avenue, Chicago, as his home address. He is chief metallurgist for the Goldsmith Bros., 1300 W. 59th street, Chicago 36, Ill.

J. Lewis Andrews is director of engineering for the Chefford Manufacturing Co. in Fairfield, Ill. His address in Fairfield is 201 S.W. 11th street.

C. L. Kemper is with the Compagnie Aramayo de Minas, Casilla 674, La Paz, Bolivia.

1925

F. N. Strong is chief engineer for the Springfield Body and Trailer Company, which specializes in gasoline transport and gasoline truck tanks. His business address is 1405 College St., Springfield, Mo.

Guy C. Cunningham addressed a joint session

of the student chapter of the American Institute of Chemical Engineers and Alpha Chi Sigma on April 17 in Rolla. Guy is in charge of the Wood-river plant of the Shell Oil Company at Wood-river, Ill.

Tom Eagan is with the Cooper-Bessemer Corp., in Grove City, Pa. His home address is 515 Woodland avenue, Grove City.

Charles H. Lindley was on the campus April 14, interviewing for the Shaffer Pen Co. of Ft. Madison, Iowa.

Irvin G. Knoebel is a chemist for the Belleville Sewage Treatment plant. He lives at 403 South 11th street in Belleville, Ill.

The mailing address of William F. Hauck is Box 129, Morrison, Ill.

1926

Harry C. Birchard is associated with the firm of Birchard and Roberts, general contractors, 200 South Vernon, Dearborn, Mich.

Herbert Shear ex-'26 is with the Triumph Mining Company, in Triumph, Idaho.

Hollis E. (Buddy) McBride is a contractor in Batesville, Ark.

Capt. Wilbur East arrived recently for a visit with friends and relatives in Rolla. Capt. East is an instructor at the Kemper Military Academy in Boonville, Mo. He plans to leave June 18 for Illinois, where he will teach at a boys' camp for the summer.

1927

Ed Parson with his wife and two children sailed from New York for Chuquicamata, Chile, on May 11. Ed is associated with the Chile Exploration Co.

R. F. McCaw is manager of the Construction division of the Radio Corporation of America. Bob's address is Box 182, Camden, N.J.

1928

John E. Weber was on the campus May 10. He was in Rolla attending a Board of Control meeting of Theta Kappa Phi fraternity. Jack is with the St. Joseph Lead Company, and his home address is 3334 Church street, Bonne Terre, Mo.

Maj. H. B. Moreland sailed from New York for Germany on June 5. Howard has been stationed at Ft. Lewis, Wash., since April, 1946. His permanent address is 501 W. Chestnut St., Robinson, Ill.

S. D. Hodgdon lives at 4724 Neola drive, Dallas 9, Tex.

Edward C. Miller is teaching in the School of Chemical and Metallurgical Engineering at Purdue University in Lafayette, Ind.

1929

B. R. Coil is general superintendent of the Miami Copper Company, Miami, Ariz.

E. A. Crawford is with the Sperry Products Inc., Hoboken, N.J. His home is in Cliffside Park, N.J., at 483 Oakdene avenue.

Louis H. Schuette is associated with the Sundstrand Machine Tool Co., 2531 Eleventh street, Rockford, Ill. He resides at 2215 Freeman, Rockford, Ill.

R. P. Baumgartner lives at 1648 Miriam St., Pittsburgh 18, Pa.

1930

William H. Keller resides in St. Louis, Mo., at 4627 Shenandoah avenue. Bill is employed by Johns-Manville in St. Louis.

F. P. McCarthy is field supervisor for Sperry Products, Inc., Hoboken, N.J. He lives at 6020 Blvd. East, West New York, N.J.

The new address of Roy S. Martin is 31 Bayside avenue, Edgewood 5, Rhode Island.

1931

F. E. Wenger is associated with Russell & Axon, consulting engineers, 6635 Delmar Blvd., University City 5, Mo. He resides at 1148 Boland place, Richmond Heights 17, Mo.

Jack N. Conley who is employed by the Seaboard Oil Co. of Delaware, recently moved to Ardmore, Okla. Jack lives at 20 D street in Ardmore.

Willis H. Wamsley is acting associate mine superintendent for the Climax Molybdenum Co. His mailing address is P.O. Box 18, Climax, Colorado.

Clyde E. Wilhite lives in Dallas, Tex., at 2438 Salerno drive. He is assistant chief of the Safety and Accident Prevention branch of the U. S.

Engineers.

1932

George J. Koch Jr. who is special agent for the National Association of Fire Underwriters, was on the campus April 11. George lives at 1920 Hayselton drive, Jefferson City, Mo.

William T. Kay has moved to 715 Twelfth N., Seattle, Wash.

Lt. Col. J. J. Livingston is with the Corps of Engineers, U.S. Army, Ft. Belvoir, Va. John has returned to the army having accepted a commission in the regular army, Corps of Engineers.

Mail will reach E. L. Karracker at Box 181, Waltham, Mass. Ed is field engineer with the Shell Oil Co.

1933

Wm. Koopman is Director of Industrial Relations for the Olin Industries, Inc., at Alton, Ill. Theo. B. Kaczmarek is living at 11656 South Lowe avenue, Chicago 28, Ill.

Arthur R. Helmkamp is in private practice as a civil engineer in Colusa, Cal. His mailing address is P.O. Box 204, Colusa, Cal.

Ted Hunt gives his address as Box 1715, Baltimore 3, Md.

Walter H. Braun lives at 732 Milford Mill road, Pikesville, Md.

Clarence W. Lamers is sales manager for the Teuscher Pulley & Belting Co. He lives at 4058 Holly Hills Blvd., St. Louis 16, Mo.

Ben K. Miller ex-'33 is superintendent of raw materials and mining for the A. P. Green Fire Brick Co., Mexico, Mo.

T. O. Seiberling, Harold A. Neustaedter '16, and W. W. Weigel '20 were in Rolla, May 9, witnessing demonstrations in the laboratories of the U.S. Bureau of Mines.

Claude S. Abshier is technical director for the Superior Laboratories. Claude resides in Benton Harbor, Mich., at 360 Twelfth street.

W. J. Jabsen is metallurgist and sales engineer for the Kalamazoo Steel Process Company. He resides at 226 West Walnut in Kalamazoo, Michigan.

1934

James W. Darling gives as his temporary business address, Manila Engineer District, APO 900, c/o Postmaster, San Francisco, Cal. Jim's home address is 19 McClellan street, Amherst, Mass.

John Benard is living in Ridgefield, N.J., at 647 Prospect avenue.

L. H. Jackson is chief of the engineering and operations section of the U.S. Atomic Energy Commission, Oak Ridge, Tenn.

T. J. Stewart who is employed by Geo. S. Mepharm Corp., E. St. Louis, Ill., was on the campus on May 7 interviewing graduating seniors for prospective employment with his concern. T. J. is living at 39 Windsor drive, Belleville, Ill.

1935

William A. Howe is associated with the Gulf Oil Corp., Room 2519, Gulf Building, Pittsburgh, Pa. His home address in Pittsburgh is 1115 Normahill road.

Robert H. Buck is with the Certain-teed Products Corp., Grand Rapids, Mich. Bob lives at 36 Bellevue street S.W., in Grand Rapids.

William H. McDill is teaching at the College of Mines and Metallurgy, University of Texas, El Paso, Tex.

Rudy Knoll is maintenance superintendent for the Eltex Corp., which is opening a new roofing material plant in Madison, Ill. He resides at 3623a Fillmore street, St. Louis 16, Mo.

W. W. Kay gives as his new address 902 Brooks Bldg., Wilkes-Barre, Pa.

W. T. Book is wire chief of the Sedalia, Mo., office of the Southwest Bell Telephone Co.

1936

Basil Osmin ex-'36 is interested in forming an MSM group with any Miners working or residing in Berlin, Germany. He expects to be in Berlin for another year. Basil's address is APO 742, OMGUS, L & P Section, c/o Postmaster, New York City, N.Y.

Elmer Kirchoff was in Rolla in April en route to Oklahoma. He is manager of the St. Joseph, Michigan "Autos" and was taking his team to Oklahoma for training. Elmer was a star ath-



# ALUMNI PERSONALS

lete during his four years at MSM, and was later basketball coach for the Miners. He played for the Rolla baseball team and later was a St. Louis Browns' farm club manager. Elmer is married to the former Miss Helen Howard, for several years Physical Education Instructor at the Rolla High School.

Milton F. **Lagemann** is a process metallurgical engineer with the Western Cartridge Co., in St. Louis, Mo. He resides at 5434 Queens Ave., St. Louis 15, Mo.

R. Vincent **Smith** ex-'36 was on the campus on March 26 interviewing chemical engineers. Vincent is with the U. S. Bureau of Mines at Bartlesville, Okla.

George O. **Nations** gives his address as Box 7373, North Kansas City, Mo.

1937  
Arthur H. **Barclay** writes that he is "out of the Army and back to strip-mining." Art is with the Filtrrol Corp., and gives his mailing address as Rt. 5, Box 4, Jackson, Miss.

The Case School of Applied Science had a spring vacation the first week in April, giving W. W. **Culbertson** a chance for a visit in Rolla. Werner is teaching at Case, which is in Cleveland, Ohio.

R. R. **Carrolla** is an engineer with the Raymond Concrete Pile Co., in Monrovia, Liberia. Ross expects to finish his job in Africa sometime in July and will return to the States. His mailing address is 301 South Cedar street, Rolla, Missouri.

E. William **Volz** who is with the Bakelite Corporation at Bound, N.J., visited the campus on May 14. His home address is 10 Bartlett street, New Brunswick, N.J.

Jimmy **McGregor** spent Mother's Day in Rolla with his parents, Mr. and Mrs. P. H. McGregor. He is employed by the St. Joseph Lead Co.

Charles F. **Benner** lives at 420 Margaret street, Herkimer, N.Y.

Grant W. **Schaumburg** is division industrial engineer for the Geneva Steel Co., of Salt Lake City, Utah. Grant lives at 264 South Third E. street, American Fork, Utah.

Clarence H. **Harris Jr.** is county engineer and surveyor with offices in the Court House in New London, Mo. His home address is 3427 St. Mary's avenue, Hannibal, Mo.

1938  
C. A. **Quam** is a mining engineer with the Titanium Division of the National Lead Co., Tahawus, N.Y.

Bram J. **Lewin** is associated with the Lewin-Mathes Company, Chouteau avenue at Twelfth street, St. Louis, Mo.

Waldemar P. **Ruemmler** is a research engineer with the Battelle Memorial Institute in Columbus, Ohio.

Fred M. **Mueller** gives Box 524, Adrian, Mo., as his new mailing address.

H. W. **Mollet** is with the Joseph E. Seagram & Sons, Inc., 7th street road, Louisville, Ky.

W. E. **Stephens** is living at 916 Union street, Platteville, Wis.

Frederick **Morrison** can be reached at 6173 Westminster place, St. Louis 12, Mo.

Frederic A. **Wonn** is an engineer for E. I. du Pont de Nemours & Co. Fred resides at 104 E. 40th street, Wilmington 269, Del.

Richard G. **Prough** who lives at 6520 Travis in Houston, Tex., is district geologist for the Union Producing Co.

1939  
Lt. Col. J. H. **Livingston** was on the campus on May 15. John is enroute to College Station, Tex., where he will enter the Graduate School of the Texas A & M. College working toward a Master's degree in Civil Engineering. He has accepted a permanent commission in the U.S. Army, Corps of Engineers, and will make the army a career.

John R. **McDonald** was on the campus on May 9 with Mr. Romine, both representing the Phillips Petroleum Co. at Bartlesville, Okla., and interested in employing graduate engineers. John is technical assistant to the Refining Dept. at Bartlesville. He lives at 1412 South Armstrong, Bartlesville.

Robert G. **Livingston** is working toward his

Doctor's degree at Iowa State College at Ames, Ia. His address is 302 W. 10th, Rolla, Mo.

Robert A. **Carter** who lives at 250 Boone Hall in Oak Ridge, Tenn., is a research chemist for Carbide and Carbon Chemical Corporation.

Harry **Tushman** now resides at 8 Kensington road, Worcester, Mass. He is with the Massachusetts Steel Treating Corporation, 118 Harding street, Worcester.

Morris **Boorky** is now with Presmet Corporation, 112 Harding street, Worcester, Mass. He lives at 45 South Floss street, Worcester 2, Mass.

A. E. "Dusty" **Rhodes** writes that he is looking forward to a visit in Rolla in the spring of 1948. "Dusty" is working for General Electric on the Atomic Energy Project in Richland, Wash., and says "The work is very interesting and we like it here very much." His address is 305 George Washington way, Richland, Wash.

Jack **Flanary** is with the Loffland Bros. Co., in Venezuela. He hopes to come back to Rolla some time in the near future for St. Pat's. Jack can be reached at Apartado 605, Maracaibo, Venezuela, S.A.

Maj. M. V. **Jamison** is Commanding Officer of the 9th Weather Squadron at Borinquen Field in Puerto Rico. Marshall's mailing address is APO 845, c/o Postmaster, Miami, Fla.

Raul J. **Arana** is living at Aptdo. 13, Chihuahua, Chihuahua, Mex.

Kenneth L. **Wadlin** is with the National Advisory Committee for Aeronautics at Langley Field, Va. He resides in Hampton, Va., at 1404 Armstrong drive.

R. P. **Dieffenbach** lives at 24629 Detroit road, Westlake, Ohio.

John R. **Post** is with the Commercial Solvents Corp., 1817 West Fullerton avenue, Chicago 14, Illinois.

George J. **Decker** is an engineer with the Schlumberger Well Surveying Corporation in Midland, Tex.

Forrest T. **Troutner** is living in Centerville, Tennessee.

E. F. **Polhmann** gives his mailing address as Baden Station, Route No. 3, St. Louis 15, Mo.

J. V. **Spalding** has recently been transferred to Tulsa, Okla., by the Bethlehem Supply Co. John's mailing address is 3216 South Utica, Tulsa.

Harold C. **Miller** resides in New York City at 160 East 48th street, Apt. 11 T.

Phil **Blazovic** is living at 124½ North Third street, Albuquerque, New Mex.

Walter L. **Goelkel** can be reached at 2720 Cherry street, Pine Bluff, Ark.

1940  
Armin J. **Tucker** is a pilot for the American Overseas Airline, flying Lockheed Constellations between New York and London. He is planning a trip to Rolla the latter part of the year with his wife and 14 months old son.

Herbert O. **Kimmel** with the Creole Petroleum Corp., in Venezuela writes: "I continue to like my work here very much. I have been doing various types of work, and I appreciate the experience. A seismograph crew being the original pioneers into a new area get the brunt of exploration operations. I am still in the state of Guarico, but have moved camp several times. Soon we expect to move into western Venezuela. The weather is very dry as yet, but within a few weeks now, the rains will begin and that means more hardships on us. I get to enjoy the luxuries of living in Caracas once every seven weeks for eight or nine days. The city is undergoing a tremendous expansion program. The Americans are doing much to bring in the American way of doing things and building things. It is the most expensive city in the world, I believe." Herbert adds that he is planning a visit to Rolla possibly in August. His address is Creole Petroleum Corp., Apartado No. 1329, Caracas, Venez.

C. C. **Palmer** is with the Ambursen Engineering Corporation, 5425 Polk, Houston 3, Tex.

Paul P. **Kraai** is an engineer in the Department of Mining and Metallurgy in the Twining Laboratories in Fresno, Cal.

John F. **Reed** has moved from Tulsa to Broken Arrow, Okla. John's address in Broken

Arrow is 318 North Dale street.

Lawrence R. **Hinken** was on the campus April 25 for the purpose of recruiting engineers for employment with the Velsicol Corporation. He is chief plant chemist with Velsicol, and can be reached at P.O. Box 109, Marshall, Ill.

Leslie M. **Payne**, on terminal leave, was visiting in Rolla on April 28. He said he saw Jack **Tiede** '40, who is working for the U.S. Rubber Co., in St. Louis, recently. Leslie's mailing address is 33rd and Virginia, Eureka, Mo.

Paul T. **Dowling** recently moved to 6332 Sutherland avenue, St. Louis 9, Mo.

Charles C. **Ward** is with the Ralston Purina Co. His address is 2008 Hemphill, Ft. Worth, Texas.

Albert L. **Kidwell** has been awarded a graduate fellowship to the University of Chicago, Al, who received a Salisbury fellowship, will work toward a doctor of philosophy degree in geology. He will enter the University in the fall of '47.

Jim **Donahue** resides at 1411 South 11th street in Maywood, Ill.

Eugene L. **Olcott** is metallurgist for the Bureau of Aeronautics, Navy Bldg., 1W66, Washington 25, D.C.

Maj. Norman **Tucker** has accepted a permanent commission in the army and is at present living at 505 E. 4th street, McCook, Neb.

Walter J. **Carr Jr.** is employed by the Westinghouse Electric Co., East Pittsburgh, Pa.

Lynn J. **Riege** is foreman for the Republic Steel Corporation. He lives in Chicago, Ill., at 1645 East 85th street.

Guy **Brown Jr.** is a special representative for the Bethlehem Supply Company. Guy lives in Oklahoma City, Okla., at 2109 N.E. 21st street.

A. R. **Herzog** who is with the Kettle River Co. in Madison, Ill., gives St. Genevieve, Mo., as his mailing address.

John J. **O'Neill Jr.** is assistant head of the Explosives Department, Research Division, at Western Cartridge. John resides in Roxana, Ill., at 214 Chatter street.

1941  
Harold J. **Schroeder** is now chief engineer of the Barite Mine and Mill, Baroid Division of the National Lead Co., at Malvern, Ark. His home address is 303 East Page street, Malvern, Arkansas.

R. E. **Fields** is field production engineer for the Atlantic Refining Co., Denver City, Tex.

J. O. **Strawhun** is working for the Stanolind Pipe Line Co., Box 591, Tulsa, Okla.

Herbert A. **Volz** was on the campus May 13. Herb left St. Louis on May 20 for Venezuela where he will be with the Mene Grande Oil Company at San Tome, Venez.

DeMarquis D. **Wyatt** gives 1324 W. 108th street, Cleveland 2, Ohio as his mailing address.

M. E. **Ne vins** is president of the Wisconsin Centrifugal Foundry, Inc., of Waukesha, Wis. Bob's mailing address is 1207 Main street, Whitewater, Wis.

Harvey C. **Stevens** is an engineer with the Shell Pipe Line Corp., Houston, Tex.

1942  
Richard J. **Cunningham** is working in the structural design branch of the U.S. Engineers. His address is 2200 South 60th street, Omaha, Nebraska.

Robert **Van Nostrand** has been discharged from military service and is at present living at 310 Campbell avenue, Sherrill, N.Y.

William R. **James** is communication representative for the Southwest Bell Telephone Co. His address is 20 W. 36th, Kansas City, Mo.

Joseph B. **Schmitt** is process engineer with the Koppers Co., Inc., chemical division. Joe was on the campus on May 15 interviewing graduating seniors for possible employment with the Koppers Co. His home address is 24 Tuoca Glenn, Beaver, Pa.

Stan **Kulifay** is a chemist in the laboratory of the Monsanto Chemical Company in Monsanto, Ill. Stan lives in St. Louis, Mo., at 4631a Moraine avenue.

Kung-Pin **Wang** who has completed work for his Master's degree at Columbia University is the author of the book "The Future Development of the Chinese Coal Industry" just printed



May - June 47

# ALUMNI PERSONALS

by the King's Crown Press, Morningside Hts., New York City. His address is 97 La Salle street, New York 27, N.Y.

Thomas R. Beveridge is teaching the University of Iowa Geology field course in the Black Hills this summer. His address is c/o Geology Department, University of Iowa, Iowa City, Ia.

S. F. Rimel is employed by the Phillips Petroleum Co., Phillips, Tex., as a gasoline manufacture engineer.

Fred Kisslinger is a graduate student at the University of Cincinnati. Fred's address is 440 Riddle road, Cincinnati 20, Ohio.

William R. Strickel who lives at 5806 South Troy, Chicago, Ill., is a chemical engineer with Johnson and Johnson.

William M. Thayer has moved from Greenfield, Mass., to Mascot, Tenn., where he is with the American Zinc Company.

G. R. Shockley is associated with the Wood Research Institute, Oglethorpe University, Ga. Edward C. Myers Jr. is a junior engineer with the Bridgeport Oil Company. Ed's mailing address is 1311 Holland, Great Bend, Kan.

George R. Leland is associated with the Wellington Explorations Limited, Apartado Aereo No. 817, Medellin, Colombia, South America.

R. M. Brackbill has been transferred by the Shell Oil Co. from Tulsa to Oklahoma City. His business address is Room 965, 1st National Bldg., Oklahoma City, Okla.

A. L. Stewart resides at 2312 Lefeber avenue, Watwatosa 13, Wis.

Austin Schumann was in Rolla in May visiting his parents and friends. Austin is with the Westinghouse Electric Corp. in Pittsburgh.

H. A. McCullough is with the Missouri State Highway Department, Division 10, Sikeston, Mo. His mailing address is 185 Benton street, Cape Girardeau, Mo.

Kenneth Roffmann has been transferred to Detroit, Mich., where his address is Westerlin & Campbell Company, 5924 Second Blvd., Detroit 2, Mich.

Edgar Rassiniere is with the Phillips Petroleum Company, P.O. Box 1947, Oklahoma City, Okla.

Capt. B. W. Hagar gives Engr. Sect., VAC, APO 777, U.S. Army, c/o Postmaster, New York, N.Y., as his mailing address.

Bob Winkle is employed in the Operations Division of the Chile Exploration Company, Chuquicamata, Chile, S.A.

Frank E. Johnson lives in Maplewood, La., at 24 Eucalyptus road.

A. T. Guernsey gives his mailing address as Box 1475, Hobbs, New Mex.

Mark W. Beard is working for Giffels & Vallet. His address is 465 Foote avenue, Webster Groves, Mo.

Hugh M. Clark has moved to 3724 Berkeley avenue in Alton, Ill.

## 1943

Clarence J. Wright is planning a visit to Rolla in the near future. Clarence is assistant research engineer at McDonnell Aircraft Corporation. His mailing address is 5031 Lotus avenue, St. Louis 13, Mo.

William G. Hoffmann is with the Southwestern Bell Telephone Co., in St. Louis. His home address is 3963 Palm street, St. Louis 7, Mo.

Clarence A. Lambelet is teaching in the Ceramics Department at Rutgers University while he is working toward his Ph.D. in Ceramics. His mailing address is c/o School of Ceramics, Rutgers University, New Brunswick, N.J.

R. V. Milton gives 908 North street, New Kensington, Pa., as his address.

Kenneth E. Meyer who recently joined the staff of Petroleum Advisers, Inc., 70 Pine St., New York City is now living at 3 Warwick Rd., Great Neck, N.Y.

J. V. Boland Jr. is associated with the John V. Boland Construction Co., 2715 Dalton Ave., in St. Louis.

A. L. Petersen Jr. recently moved to Houston, Tex., from St. Louis. His address is 3323 Palm street, Houston.

H. J. Ballinger is with the U.S. Bureau of Mines, Box 136, Rolla, Mo.

J. G. Leming has moved to 352 Buffalo Ave., Niagara Falls, N.Y.

Lewis Edward Rosser has been released from the service and is living at 3215 St. Mary's avenue, Hannibal, Mo.

Roy L. Kackley is with the Carrothers Construction Company in Paola, Kan.

Fred C. Kibler has been discharged from military service and is with the Carter Oil Co., his address being P.O. Box 43, St. Elmo, Ill.

E. Harvey Barnett has moved to 630 Langdon, Alton, Ill.

J. H. Olsen lives at 1210 Victoria avenue, in New Kensington, Pa.

J. V. Carroll is sales engineer for the White Metal Rolling and Stamping Corporation of Brooklyn, N.Y. Jim writes that he and his wife, Betty, are now the proud parents of a girl. The Carroll's live at 1516 Lake road, Webster, N.Y.

Frank Rehfeld and Ken Vaughn '47 have formed the R and V Construction Company in Rolla. The company works in cooperation with the Home Builders Corporation of Sedalia, builders of manufactured, plywood-panel homes. Frank and Ken put two "manufactured homes" on display in Rolla the first part of May.

Lt. Cmdr. E. B. Johnson ex-'43 is at the Post-Graduate School, U. S. Naval Academy, Annapolis, Mo.

Edward L. Hildebrand is metallurgist with the Humble Oil & Refining Co. His home address is 417 1/2 Michigan, Baytown, Tex.

Joe Berndt who is working in the Engineering Department at Carbide and Carbon Chemicals Corp., writes that "Doc" Day '32, and Bob Wright '41, are also with Carbide and Carbon Chemicals. "Doc" is in one of the Research Groups, while Bob is in the Instrument Department. Joe's address is 1603 E. Washington, Charleston, West Va.

Donald J. Studebaker is party crew chief of the Gravity Meter Crew with the International Petroleum Co., in Lima, Peru. Mail will reach Don at Humansville, Mo.

Robert Hartleb is working on television and he says, "It keeps me quite busy, and is an interesting field." Bob's mailing address is 1219 82nd street, North Bergen, N.J.

Leonard N. Larson who received his Master's degree in Ceramic Engineering in June is working for the Electric Auto-Lite Co., in the Spark Plug division. His address is Box 184-26M, R.R. No. 3, Fostoria, Ohio.

D. J. Coolidge is a part-time instructor at Northwestern University in Evanston, Ill. His mailing address is 215 Bailey road, Crystal City, Missouri.

Ralph Elsea is working for the Carrier Corp., and his home address is 255 Julia avenue, East St. Louis, Ill.

Matthew J. Kerper and John E. Burst both received their Master's degrees in Ceramic Engineering in June. Matt's address is 2018 Victor, St. Louis 4, Mo., while mail will reach Jack at 3818 Loughborough, St. Louis, Mo.

Henry N. Sloan is plant engineer for the Alpha Portland Cement Company in La Salle, Ill. His home is in Peru, Ill., at 1310 Bluff St.

Waldemar M. Dressel is a geologist with the Gulf Oil Corp., Midland, Tex. His mailing address is Box 1150, Midland, Tex.

Fred J. Radavich is a graduate student at MIT. He lives at 316 Memorial drive, Cambridge, Mass.

## 1944

Warren Wade Helberg is in the X-ray division of Westinghouse Electric Corporation in Wichita, Kan. His home address is 2537 Ellis avenue, Wichita.

Peter Edward Des Jardins is with the Shell Oil Co., Inc., Odessa, Tex.

John O. Stegner is design engineer with the Standard Oil Co., Sugar Creek, Mo. He resides in Kansas City, Mo., at 557 Evanston avenue.

J. L. Ronat gives 513 Holmes street, Pittsburgh 21, Pa., as his new address.

P. M. Dampf lives at 1747 College avenue, in East St. Louis, Ill.

John H. Van Os recently moved to 71 Stadium place, Apt. B, New Orleans 15, La.

Max L. Custis has moved to 209 Pressley, Kellogg, Idaho.

J. Richard Hansen is a junior engineer in the Electronics department in the Westinghouse

Research Laboratories in East Pittsburgh, Pa. He resides at 435 South avenue in Wilksburg, Pennsylvania.

W. J. Dean is living in Palmer, Mo.

George Tatoian is waiting for his discharge from the Army, and expects to be taking some work at MSM next fall. His civilian address is Cross Road, Naugatunk, Conn.

Harold F. Webers can be reached at 5152a Eichelberger in St. Louis, Mo.

Alan P. Ploesser is living in Southard, Okla.

J. D. Dowd is with the Aluminum Company of America in New Kensington, Pa. His home address is 332 Freeport road, New Kensington.

W. J. Barnett is working toward his Ph.D. degree at Notre Dame University. Bill's address is Box No. 459 Rural Route No. 5, South Bend, Ind.

Millard F. Kadera is living in St. Louis, Mo., at 5438 Chippewa street.

C. A. Dick gives 404 Walnut street, Paris, Tenn., as his permanent mailing address.

Edward M. Schultz lives in St. Louis, Mo., and is employed as a metallurgist by the Bronze Alloys Co. Ed's home address is 1402a Linton avenue, St. Louis.

Robert F. Summers is with the Chrysler Corporation as a research engineer. His address is 13220 Woodward, Highland Park, Mich.

Ernest J. Massard is living at 5740 Brooklyn, Detroit, Mich.

Lincoln A. Sanders is employed by the W. M. Bostock Engineering Co. of South Gate, Cal., as a structural engineer. He resides at 1124 1/2 W. 45th street, Los Angeles 37, Cal.

Ronald L. Carmichael is employed in the Mining department at MSM. His address is General Delivery, Rolla, Mo.

Charles L. Rakestraw is with the Phillips Petroleum Co., in Kansas City, Kan. He got his Master's degree from MSM in June.

William H. Magill is working for the Missouri State Board of Health in Jefferson City, Missouri.

Paul R. Kasten will be in Rolla for the summer at 206 East 12th street, Rolla, Mo.

John R. Riggs who lives at 17 Front street in Schenectady, N.Y., is employed by General Electric as an aeronautics and marine engineer.

Warren L. Larsen has to move out of Graduate House, MIT, Cambridge, Mass., inasmuch as he is to be married June 12 to Miss Priscilla Rosens of Belmont, Mass. They will reside at 13 Prince street, Belmont, Mass.

## 1945

Robert Eugene Murray was on the campus on April 19. He was accompanied by his brother who will enroll in the School of Mines next fall. Bob's address is 2713 South 18th street, St. Louis, Mo., and he is an engineer with the Laclade Gas Light Co.

Roy H. Boyd is a civil engineer with the Bureau of Reclamation in Topeka, Kan. Roy's address in Topeka is 1411 Fillmore.

E. W. Blase ex-'45 lives at 200 E. 18th street, Apt. 3-D, Brooklyn 26, N.Y.

Earl M. Shanks has been discharged from the Navy and will return to his employment with the Aluminum Co. of America at East St. Louis, Ill. Earl's home address is 1101 W. Budlong street, Carthage, Mo.

Robert C. Rankin is an estimator with the St. Louis-Southwestern Railway, and his mailing address is P.O. Box 611, Tyler, Texas.

Elmer A. Milz is living in Tulsa, Okla., where he is a junior petroleum engineer with the Shell Oil Co. His address is 1376 East 26th street, Tulsa.

Bill Break can be reached at 603 Albert, Cape Girardeau, Mo. Bill got his Master's degree in Chemistry this June.

## 1946

R. S. Mann, engineer in the Bridge Bureau of the Missouri State Highway Commission at Jefferson City, has completed a 128 page annual report of the Missouri School of Mines chapter of the American Society of Civil Engineers. The publication is made up of numerous photographs of engineering projects in the vicinity of Rolla and is a report on 15 meetings of the ASCE chapter on the campus.

W. A. Rutledge was visiting on the campus,



## ALUMNI PERSONALS



Class of '47 seated in the Uptown Theater listening to the Commencement Address of Dr. L. E. Young. Photo 'Esquire' Rolla

April 22. Bill is with General Electric in the test program at Schenectady, N.Y., and is being transferred to Fort Wayne, Ind. In the G.E. plant at Schenectady, Bill said he ran across Dean Daniels '46 and Richard Riggs '44, while the Supervisor of Test at Kokomo, Ind., is Art Wilson '42. Bill's mailing address is 119 E. Cartwright, Lemay, Mo.

Russell Frame spent March 25-26 in Rolla with his parents, Prof. and Mrs. R. H. Frame. Russ is studying forestry at Oregon State College, Corvallis, Ore.

T. D. Daniels was a campus visitor April 20. Dean is with the General Electric Co. at Schenectady, N.Y., and is living at 212 Reynolds St., Scotia 2, N.Y.

Earl M. Hogan is with the U.S. Geological Survey at Camp Shelby, Miss.

E. L. Bahn is living in St. Louis at 6142 Westminster place. He is with the National Lead Company.

Eberhard H. Miller received his second degree in Electrical Engineering in June. He is taking more work at MSM and be reached at MSM Apts., P-3, Rolla, Mo.

1947

George E. Henry is working for the American Bridge Co., Gary plant, Gary, Ind. George's mailing address is 956 Mt. Vernon, Springfield, Missouri.

Virgil Johnson is in the research and development department of the Sinclair Refining Co. in East Chicago, Ind. His home address is 17949 Roy, Lansing, Ill.

Ralph J. Feldhaus is living at 633 Prospect avenue in West Hartford, Conn., where he is employed by the Federal Electric Company.

Charles E. Schulze is with the Waupaca Brick Corporation as a ceramic engineer. He can be reached at Route No. 33, Waupaca, Wis.

James W. Raney is employed by General Electric, and his mailing address is 1701 Olive street, Rolla, Mo.

Jose George McClinton who is working for the Wagner Electric Corporation, gives 1341 Belvue, St. Louis 14, as his mailing address.

Richard L. Schmitz is with the George S. Mephram Corporation of East St. Louis, Ill.

Dick lives at 2326 Hilton avenue, Brentwood, Missouri.

Rigoberto Saenz Anderson gives Ascension, Chihui, Mex., as his address.

Robert C. Riedmeyer who is living at 2017a Adelaide avenue in St. Louis, Mo., is working for the McDonnell Aircraft Company.

Kenneth Welsch Franks can be reached at 338 North Elm street, Hinsdale, Ill.

Don Fink is with the Shell Oil Company in St. Louis. His home address is 4889a Farlin, St. Louis 15, Mo.

Gilbert Carafiol gives as his mailing address 5903 Enright, St. Louis, Mo.

Warren H. Bell can be reached at 3504 Humphrey street, St. Louis, Mo.

Hartley M. Bosworth is employed by the Koppers Company in Kearny, N.J. His mailing address is 15 Riddell street, Greenfield, Mass.

Harold B. Harms' mailing address is 902 Royal street, Alton, Ill.

Arthur H. Fuldner Jr. who is employed by General Electric in Schenectady, N.Y., gives 550 Warren avenue, University City, Mo., as his permanent address.

Robert E. Johnk is working for the Shell Oil Company in Woodriver, Ill. Bob lives at 1225 Brown street, Alton, Ill.

Mail will reach M. Gerson Ginzberg at 3725 Reading road, Cincinnati, Ohio.

B. J. Rhoads Jr. is employed by the Stanolind Oil and Gas Company in Hobbs, New Mex.

Carl B. Davis is doing graduate work at MSM. Carl lives at the PiKA house in Rolla.

William B. Distler's address is Woodruff, Wis.

Bing Q. Yee is doing graduate work at the University of Oklahoma in Norman.

Albert W. Kallmeyer is working in the Hawthorne Works of Western Electric Co. in Chicago, Ill. His home address is 6640 Lindenwood, St. Louis 9, Mo.

Melvin F. Kallmeyer is working for Western Electric in Chicago. Mel's mailing address is 6640 Lindenwood place, St. Louis 9, Mo.

John W. Lewis is employed by the Dixie Fire Brick Co., Inc., in Kimberly, Ala. Mail will reach John at General Delivery, Warrior, Ala.

William C. Hayes' address is 1124 N. Jeffer-

son, Springfield, Mo.

Gilbert Plimpton is in Holden, Wash., with the Howe Sound Company. His mailing address is Box 44, Mt. Hope, Wis.

Ronald A. Tappmeyer is with the Shell Oil Company in Tulsa, Okla.

Cliff Dameron is living at 11 N. 10th street in Lafayette, Ind. He is employed by the Aluminum Company of America.

Nicholas Mushovic, who is employed by Caterpillar Tractor Co. in Peoria, Ill., gives as his permanent address 356 Deerfield street, Greenfield, Mass.

Robert K. Neuman who is employed by the Koppers Co. of Kearney, N.J., can be reached c/o Mrs. Crusie Minnich, Hegins, Pa.

Robert F. Orton is working for the Southern Geophysical Co., Sinclair Building, Fort Worth, Texas.

Bill Christman is taking an 18 month training period with Ingersoll-Rand in St. Louis. Bill's mailing address is 755 Greenview drive, Glendale, Mo.

Richard A. Sperberg is in Rosiclare, Ill., with the Ozark-Mahoning Company.

Reo E. Goodwin is working in Midland, Tex., with the Stanolind Oil & Gas Co. He gives R.R. No. 1, Palestine, Ill., as his mailing address.

Gale Fulghum is employed by the J. F. Pritchard and Company in Kansas City, Mo.

Richard R. Williams' address is 1801 Vichy road, Rolla, Mo.

Herman Mansfield gives his mailing address as 1481 Eastern Parkway, Brooklyn 33, N.Y.

Shih-Lin Chu is with the China Petroleum Corporation, and his address is No. 155 Kau-Foo road, Nanking, China.

Eugene N. Bennett is employed in Gorham, Kan., with the Stanolind Oil and Gas Company.

Charles A. Bruce is in Tulsa, Okla., where he works for the Shell Oil Company.

William E. Van Ells can be reached at 1037 Oak street, Wisconsin Dells, Wis.

Donald H. Koch lives in St. Louis at 6627 Hoffman, where he is employed by the St. Louis Hardware Manufacturing Company.

Paul E. Crafton is with the American Rolling



# ALUMNI PERSONALS

Mill Co., in Middletown, Ohio.  
Mail will reach Philip A. Tucker at Palmyra, Mo., Route No. 2.

John L. Brixius is employed by the Southern Geophysical Co., Sinclair Bldg., Fort Worth, Texas.

Kenneth G. Adrain's mailing address is Cassville, Wis.

James R. Snowden is teaching at the University of Illinois in the Department of Theoretical and Applied Mechanics. His permanent address is Box 547, Rolla, Mo.

Gaylord C. Pitts can be reached at 109 Elm street, Platteville, Wis.

Jim Stephens, who lives at 210 W. South St., Warrensburg, Mo., is with the Missouri Public Service Corporation.

J. Hartley Locher is working for the W. A. Shaeffer Pen Co. in Fort Madison, Ia.

William Ashley Ellis is with Westinghouse Corporation. His mailing address is 2447 North National avenue, Springfield, Mo.

Robert E. Pautler, whose address is 403 South Oak, Union, Mo., is employed by American Telephone and Telegraph.

James A. Smith is with General Electric in Bridgeport, Conn.

Thomas R. Pierce is with the Texas Petroleum Company, Apartado 267, Caracas, Venez.

Lloyd H. Wilson's address is No. 3 Military Court, Rolla, Mo.

Elvin A. Henke, who lives in Edwardsville, Ill., at 324 M. street, is with the Shell Oil Co., Woodriver, Ill.

Billy W. Nichols is working for Phelps Dodge Corporation in Bisbee, Ariz.

John T. Hazelett is employed by Ingersoll Rand Co. His address is 914 Concordia lane, Clayton, Mo.

James R. Bryant plans to continue his schooling. His mailing address is 627 E. Washington street, Morris, Ill.

W. P. Tappmeyer is teaching at the Southwest Baptist College in Bolivar, Mo.

James W. Snider's address is Rt. No. 13, Box 862, Kirkwood 22, Mo.

George I. Perryman Jr. is employed by the Creole Petroleum Corp. in Maracaibo, Venez. His mailing address is 409 Winona avenue, Montgomery 7, Ala.

Jesse W. Wilson is working in York, Pa., with the York Corporation.

George H. Wagner is teaching at the Case School of Applied Science in Cleveland, Ohio.

Keith D. Sheppard is doing graduate work. His address is Box 275, Farnfeldt, Mo.

Walter D. Bessel's mailing address is 2316a North Bremen street, Milwaukee, Wis.

Henry T. Capelle is employed by the Shell Oil Company in Tulsa, Okla.

Lester K. Moeller is working for the Stanolind Oil & Gas Co., Luby Area, Corpus Christi, Texas.

Eloy M. Cueto is with the American Zinc Company, Fairmont City, Ill. Eloy lives at 3805 Waverly avenue, East St. Louis, Ill.

Harry J. Gilliland is working for the Wisconsin Steel Co., 2701 E. 106th street, Chicago, Ill.

Robert F. Bruzewski is working for his Master's degree at MSM. His address in Rolla is 800 East 6th street, Rolla, Mo.

Jay L. Weeks can be reached at R.F.D. No. 1, Independence, Mo.

V. A. Haak gives his mailing address as Box 39, Middleton, Wis.

Wilbert F. Wegener is teaching in the Civil department at MSM.

Kenneth W. Vaughan is a partner with Frank Rehfeld in the R. & V. Construction Company in Rolla. Ken's home address is 1208 Pine.

Keith R. Baillie's address is 125 Virgin Ave., Platteville, Wis.

Dale J. Brown's address is 511 Seventh street, Mineral Point, Wis.

Roy V. Denton is with Phillips Petroleum Company in Borger, Tex.

Kenneth L. Gille is in business for himself in Cuba City, Wis.

Richard D. Amel is working for the Magnolia Petroleum Company, P.O. Box 900, Dallas 1, Texas.

John E. Schork is working in Cataret, N.J.,

for the U.S. Metals Refining Co.

LeRoy McKenna's address is 428 East 7th street, Leadville, Colo.

Jack F. Faser is working for the Ingersoll-Rand Company in Phillipsburg, Pa.

William C. Wunnicke is in Odessa, Tex., with the Stanolind Oil & Gas Co.

Cecil C. Baillie can be reached at 125 Vrigin avenue, Platteville, Wis.

Walter H. Sale is working for the American Smelting & Refining Co. in Alton, Ill. He lives at 6035 Shulte, St. Louis, Mo.

George J. Miller's address is 3021 North Jefferson avenue, St. Louis 7, Mo.

Walter Stephens is employed by the Gulf Oil Corporation in Tulsa, Okla.

William H. Hellwege is doing graduate work at the School of Mines. Bill lives at 312\*East 12th, Rolla, Mo.

Robert F. Devine is with the Battelle Memorial, 505 King avenue, Columbus, Ohio.

Donat B. Brice lives at 1608 Maple, Alton, Ill.

John E. Makay gives his mailing address as 1918 Omaha, Granite City, Ill.

Walter H. Taschek is working in Chicago, Ill., with the U.S. Gypsum Company. His permanent address is 713 Lucy street, Darlington, Wisconsin.

Joel B. Pomeroy's address is 764 Stone street, Fayetteville, Ark.

Sam Lloyd can be reached at 912 West 12th, Rolla, Mo.

James D. Sullivan's permanent address is 320 North Maple street, Lebanon, Tenn.

Charles S. Kaplan's address is 223 North Cedar, Hawthorne, Cal.

Joseph L. Haleski gives his address as 15 W. Bettelwood avenue, Oaklyn, N.J.

Pete Vaida is with the Exact Levels Tool Manufacturing Co., of High Bridge, N.J.

Howard M. Stangland can be reached at Route No. 1, Newark, N.J.

John D. Mueller is in Webster Groves, Mo., living at 6 Villawood lane.

William E. Howard's address is 5339 Nottingham avenue, St. Louis, Mo.

Richard G. Steiner gives his mailing address as 1040 Sells avenue, St. Louis, Mo.

Edward P. Patterson's permanent address is 4711 Parish lane, Kansas City, Kan.

James Edward Wylie can be reached at 6839 Normandie drive, St. Louis 20, Mo.

James J. Casler Jr. is in Woodside, Long Island, where he lives at 40-07 Sixty-seventh St.

John H. Stark's address is Weinert, Tex.

Mail will reach Herman M. Storer at Box 112, Viola, Wis.

Gerald C. Sears gives his mailing address as 1624 Rhomburg, Dubuque, Ia.

Willis W. Brown is with his own company, the Brown Construction Company in Lyons, Kan. His address in Lyons is Box 528.

Glenn H. Fritz is an assistant mining engineer with Anaconda Copper Mining Co., Butte, Mont., where he resides at the YMCA.

Guerdon G. Kopp is working for the Tennessee Copper Company in Ducktown, Tenn.

A. Risher Hall Jr. is with the James Stewart Corp., and his address is 3109 Hagland, Fort Wayne 6, Ind.

Nathan R. Sewell Jr. is in the Research department of the North Carolina State College in Raleigh, N.C. His address is 2206 Hope street, Raleigh, N.C.

Albert H. Thorweger gives his address as 7734 Snowden, Richmond Heights, Mo.

Albert Olivares is working in Caracas, Venez. He is employed by the Standard Oil Company of New Jersey, and reports that he is enjoying his work very much. His address is Ave. Lima No. 2 Qta. Coromoto, Los Caobos, Caracas, Venezuela.

Charles E. Carlberg is employed in the Geophysical Exploration department of the Magnolia Petroleum Company, located in Blanco, New Mexico.

John C. Allen gives his address as Box 1410, Globe, Arizona. John is presently employed by the U.S. Geological Survey.

Michael Monte lives at 336 Sunnyside, Aurora, Ind. He is employed by the Seagram Distilleries.

H. Gene Russell gives his address as 4465 South Ellis avenue, Chicago, Ill. He is working for the Sinclair Refining Company in the Research and Development department.

Philip D. Johnson lives at 504 Caledonia St., Butte, Mont. His job is assistant mining engineer, for the Anaconda Copper Mining Company in Butte.

H. C. Dameron Jr. is employed by the Aluminum Company of America at their Lafayette, Indiana plant.

Anton Leone is presently employed by the Missouri Highway Department, and gives his address as Box 265, Vandalia, Mo.

W. J. Barnett is employed as a Teaching Fellow in the Department of Metallurgy of the University of Notre Dame. His address is Box 145, Notre Dame, Ind.

Ivan B. Lampe is working for the National Lead Co., in St. Louis. His mailing address is 222 Horn avenue, Lemay 23, Mo.

Samuel H. Lyle is employed by the Baker Heating & Engineering Company of Ferguson, Mo., as a construction engineer.

George Wood's home address is 2123 South 78th street, West Allis 14, Wis. He works for the Allis-Chalmers Mfg. Co.

Frank F. Kerr is employed by the Empire District Electric Company of Joplin, Mo. Mail will reach him at Box 61, Joplin, Mo.

Harry C. Ahl Jr. can be reached at the Ohio Brass Company, Mansfield, Ohio, where he is employed in the Technical department.

George A. Allison lives at 613 North 60th street, East St. Louis, Ill. He is employed by the American Lead, Zinc, and Smelting Company of St. Louis, Mo.

William J. Goodwin's home address is Route 1, Porter road, Niagara Falls, N.Y. He works for the Union Carbide and Carbon Research Laboratories, Inc., in Niagara Falls.

L. N. Wood's present address is Villa Ridge, Missouri.

Harold E. Vogt is employed by the United States Gypsum Company at their plant at Heath, Mont. He lives at 910 Idaho street, Lewistown, Mont.

Raymond H. Lahmeyer gives Route 1, Hols Summit, Mo., as his mailing address. He works for the Missouri State Highway Department in the Bridge Design Section.

DETACH HERE AND MAIL PROMPTLY

■ If you have changed your address please fill out this form and send it to the ALUMNI OFFICE, Parker Hall, MSM, Rolla, Missouri.

Name

I have changed my address from

to