



## Missouri S&T Magazine, September-October 1946

Miner Alumni Association

Follow this and additional works at: <https://scholarsmine.mst.edu/alumni-magazine>

---

### Recommended Citation

Miner Alumni Association, "Missouri S&T Magazine, September-October 1946" (1946). *Missouri S&T Magazine*. 226.

<https://scholarsmine.mst.edu/alumni-magazine/226>

This Magazine is brought to you for free and open access by Scholars' Mine. It has been accepted for inclusion in Missouri S&T Magazine by an authorized administrator of Scholars' Mine. This work is protected by U. S. Copyright Law. Unauthorized use including reproduction for redistribution requires the permission of the copyright holder. For more information, please contact [scholarsmine@mst.edu](mailto:scholarsmine@mst.edu).

Sept-Oct, 1946

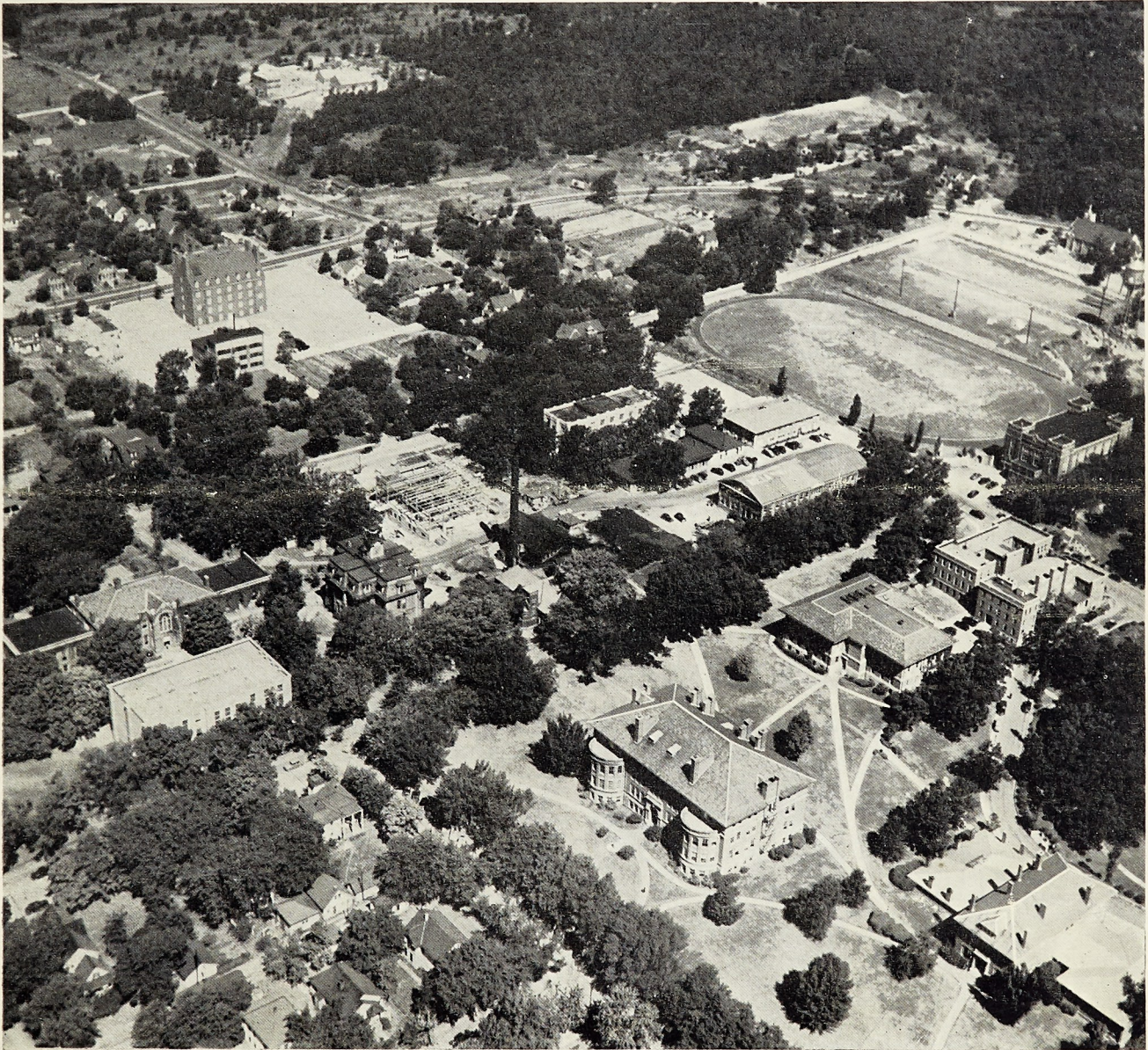
# MSM ALUMNUS

Missouri School of Mines and Metallurgy  
ROLLA, MO.

VOLUME 20

SEPTEMBER-OCTOBER, 1946

NUMBER 6



Photo—Esquire Studio, Rolla

## AERIAL VIEW OF THE CAMPUS

NEW BUREAU OF MINES BUILDING IN LEFT BACKGROUND

NEW POWER PLANT SHOWN UNDER CONSTRUCTION IN CENTER

NORWOOD HALL SHOWN IN CENTER FOREGROUND

JACKLING GYMNASIUM AND FOOTBALL FIELD AT EXTREME RIGHT CENTER

## CAMPUS NEWS

### Prof. R. Z. Williams '31 Appointed Assistant Dean

The appointment of Prof. R. Z. Williams, chairman of the Mechanics department, as Assistant Dean of the school has been announced by Dr. Frederick A. Middlebush, president of the University of Missouri. The appointment as made at the recommendation of Dean Curtis L. Wilson, and was made necessary by the greatly increased enrollment at the School of Mines this fall.



Dean Williams graduated from the Missouri School of Mines and Metallurgy with the degree of Bachelor of Science in Metallurgy in 1931 with highest honors. He joined the Missouri School of Mines faculty as instructor in Mechanics, and later took his Master's degree in Mechanics from the University of Wisconsin. Since that time he has earned the degree of Bachelor of Science in Civil Engineering here, and has done additional graduate work at the University of Michigan.

While still an instructor, Prof. Williams became interested in the filled-sink deposits of iron ore in the Missouri Ozarks, and in 1934 in one of these mines he located a deposit of iron pyrite. Since this mineral was in demand for the production of sulphuric acid, the deposit was developed by the partnership of Thomas and Williams, and became the largest pyrite producing property in Missouri's history.

Prof. Williams was made full Professor of Mechanics in 1945, and served as Acting Dean of the school during Dean Wilson's absences from the campus in 1945 and 1946.

He has been active in student affairs, being a member of the Lambda Chi Alpha fraternity, Tau Beta Pi, Phi Kappa Phi, Blue Key, and Theta Tau. He is adviser to the local chapter of Lambda Chi Alpha, a member of the advisory board of Tau Beta Pi, and a member of the St. Pat's Board of Control. In the professional field, he is a member of the American Society of Mining and Metallurgical Engineers, the American Society of Engineering Education, and the Missouri Society of Professional Engineers.

Prof. Williams took up his new duties on Sept. 1. He will continue as chairman of the Mechanics department and will devote part of his time to teaching.

### Record-breaking Enrollment Totals 2118

By PETE VAIDA '47

Enrollment of 2118 students this semester necessitated the use of two registration days. Over 750 Freshmen were registered on Sept. 18 and the remainder of the upperclassmen were registered on Sept. 23.

With the gymnasium being used to temporarily house students waiting for the completion of the dormitories, the Freshmen were registered in Mechanical Hall. By the end of the day, 825 students, including some upper class football men and registration clerks, had completed the final phase of their enrollment.

On Sept. 23 the largest number of students in the history of the Missouri School of Mines was registered. To cope with this influx of students, facilities in both Mechanical Hall and Norwood Hall were utilized.

This day of prolonged inconvenience started for the more ambitious students who massed in front of the doors of Norwood Hall at 7 a.m. An hour later the line extended beyond the corner of 12th and Pine streets.

The ordeal was somewhat bewildering for the Freshmen, and even the upper classmen were a little confused as they began to go through the lines. However, the clerks had been well briefed and became more proficient at their tasks after the first few were processed.

More than 700 upper class students were registered during the morning. By 4 p.m. the wearying task of processing 2078

### Prof. S. H. Lloyd Heads Newly Created Humanities Department

The consolidation of three departments of instruction at Missouri School of Mines and Metallurgy into the Department of Humanities and Social Studies was approved by the Board of Curators of the University of Missouri on recommendation of Dean Curtis L. Wilson at its meeting on Aug. 30. Prof. S. H. Lloyd, presently Professor of Economics, will head the new department which will offer courses in English, Economics, History, Sociology, Psychology and Foreign Languages.



The purpose of the consolidation is to make more effective the recommendation of a committee of engineering educators made in 1940 concerning education after the war. This committee suggested that the equivalent of about one academic year be allotted to the area of humanities and social studies to augment the technological education of the young engineer.

Prof. Lloyd has been on the faculty of the School of Mines since 1921 and head of the Department of Economics since 1938. He is a graduate of DePauw University and has a Master's degree from the School of Mines. He is planning the broad program to make the work of these departments fit into the recommendation of the committee from the American Society for Engineering Education as mentioned above.

Prof. Lloyd stated that the primary objective of the new department would be to develop the ability of the engineering student to write and speak the English language effectively and to give him a knowledge of human social relationships and an appreciation of the cultural interests outside the field of engineering.

### New Business Manager Appointed

Harry J. Fields, who was appointed Auditor of the School of Mines in April 1946, has been named Business Manager to succeed Howard M. Katz '13, it was announced by University officials on Sept. 9.

Katz served as a member of the Business Office staff for 10 years. He was first appointed Purchasing Agent, later assuming the duties of Acting Business Manager.

A graduate of the University of Missouri in 1942 with a degree of Bachelor of Science in Business Administration, Fields served in the Pacific theater with the amphibious forces of the Navy during the war. Before coming to Rolla he was employed in the Office of the Secretary of the University of Missouri.

### Miner is Now Eight-Column Paper

Keeping up with the trends of expansion on the campus, **The Missouri Miner**, campus news publication, has increased in size from a tabloid to a full-sized eight-column four page newspaper.

The first fall semester issue, published Sept. 25, headlined the record-breaking enrollment and displayed a variety of news stories, pictures and feature columns.

Cecil Branson, a senior student from Rolla, again heads the staff, having served as editor last summer also.

students had been completed. Late registration brought the total to 2118 students according to a count made Oct. 5.

Electrical Engineering drew the greatest number of students with a total of 407; Mechanical Engineering, 387; Mining Engineering, 328; Civil Engineering, 258; Chemical Engineering, 223; Metallurgical Engineering, 171; Ceramic Engineering, 67; and Science, 32. The remainder are special or unclassified students.

# PRESIDENT'S PAGE

## MSM Alumnus

Issued bi-monthly in the interest of the graduates and former students of the School of Mines and Metallurgy. Subscription price \$1.50, included in Alumni Dues. Entered as second-class matter Oct. 7, 1926, at Post Office at Rolla, Mo., under the Act of March 3, 1879.

### Officers of the Association

FRED C. SCHNEEBERGER '25 ..... *President*  
 KARL F. HASSELMANN '25 ..... *Vice President*  
 HOWARD M. KATZ '13 ..... *Secretary-Treasurer*

### Contents

About Town and Campus	5	Homecoming	10
Alumni Personals	18	Housing	14
Athletics	13	Men in Industry	6
Campus News	2	Miscellanea	15, 17
Directory,		President's Page	3
Rolla Restaurants	11	Section News	4
Faculty Directory	9	Vets' Observation Post	8

## Incorporation, Constitution, and Trust Agreement

Vice President Karl Hasselmann spent two days in St. Louis during the past week during which time, we are pleased to say, we completed the final drafts of our Articles of Incorporation, Constitution and By-Laws, and our Trust Fund program.

During the many conferences with our Attorneys, we have had much valuable assistance, and many valuable suggestions, from many of our members. While it was not always feasible to incorporate all of the suggestions offered, we did tabulate all of them, and one by one, we discussed them with our attorney and, when it was agreed that revision was indicated, we were glad to incorporate the suggestions offered.

Among the many contributions of valuable suggestions were: Messrs. Frey, Gerber, Haas, Head, Hubbard, Jackling, McAuliffe, Needles, Rassinier, and Stifel. We salute these gentlemen for their interest and assistance!

Your Alumni Association is consequently now in the process of becoming incorporated under the Laws of the State of Missouri relating to benevolent, religious, scientific, fraternal-beneficial, educational, and miscellaneous associations in line with the Articles of Association covered in a previous issue of the Alumnus.

The new Constitution and By-Laws will concern the manner in which your Association shall be governed, and the Trust Agreement will govern the handling of funds contributed in the interest of a better MSM.

Sounds simple, but a lot of work and time was given to this, a plan upon which we shall be able to guarantee that our own house is strictly in order, as a forerunner to, perhaps, suggestions to others whose efforts are not so favorably constituted.

Many prominent Alumni have expressed acute desires to contribute funds for use at MSM involving enterprises for which State funds do not always provide. The new trust agreement provides the security machinery for the purpose, and it is sincerely hoped that it will be adequately supported. Copies of the revised Trust Agreement will be mailed to all Alumni who are in a mood to make contributions at this time, upon request to Mr. Karl F. Hasselmann, Mellie Esperson Bldg., Houston 2, Texas.

### Nominating Committee

Mr. Carl G. Stifel, Chairman of the Nominating Committee has submitted his report of the nominees for the offices of President, Vice President, and Secretary-Treasurer,

which offices shall have been vacated by the present incumbents on Dec. 31, 1946. After Mr. Stifel received the reports from his committee, it was felt advisable by Messrs. Stifel, Hasselmann, and Schneeberger, to bring the provisions of the new Constitution and By-Laws into effect, since the incoming officers will be conducting the Association under the rules included in these instruments. It was deemed advisable, therefore, to submit the following nominees for the offices indicated:

#### PRESIDENT

Mr. Karl F. Hasselmann '25—Houston, Tex.

#### VICE PRESIDENTS

Mr. J. L. Head '16—New York, N.Y.

Mr. H. S. Pence '23—St. Louis, Mo.

(Vote for two)

#### SECRETARY-TREASURER

Mr. Howard M. Katz '13—Rolla, Mo.

Mr. Al T. Smith '27—Rolla, Mo.

(Vote for one)

#### DIRECTORS

Mr. C. A. Freeman '28—Mexico, Mo.

Mr. M. E. Nickel '38—Chicago, Ill.

Mr. Barney Nuell '21—Los Angeles, Cal.

(formerly Nudelman)

Mr. C. J. Potter '29—Washington, D.C.

Mr. R. G. Prough '38—Houston, Tex.

Mr. W. E. Remmers '23—New York, N.Y.

Mr. F. C. Schneeberger '25—St. Louis, Mo.

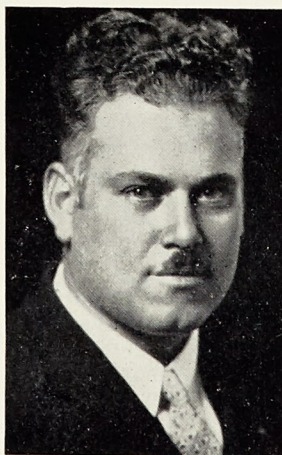
Mr. J. M. Wanenmacher '23—Tulsa, Okla.

(Vote for five)

Mr. Howard Katz, Secretary-Treasurer, will prepare the necessary ballots and mail one to each member on, or before, Nov. 18, 1946, as provided by both the old, and the new By-Laws.

Twenty-one hundred students are now in Rolla. These men can be made into MSM Salesmen if we all make it our business to do just a little part in the gigantic problem of properly assimilating them into our Educational Institution. Better drop down to Rolla during Homecoming and look the situation over.

## Prof. John M. Willson Dies



John M. Willson, Assistant Professor of Physics at MSM, died Sept. 6 in Winnipeg, Canada, where he was attending a high Masonic convention. He was 43 years old.

Prof. Willson was graduated from MSM with a degree of Bachelor of Science in General Science in 1929 and received his degree of Master of Science in the same field here in 1931. He had been a member of the Physics department staff for 16 years.

For the past several years he served as chairman of the M S M Athletic Committee which brought him in contact with a large number of students and alumni. He was active in civic affairs in Rolla and this year was elected Grand Master of Work in the Masonic Lodge in the State of Missouri.

Surviving are his wife, Mrs. Iva Willson, who was in Canada with him at the time of his death, his mother and several brothers and sisters. Funeral services and burial were held Sept. 11 in Rolla.

## SECTION NEWS

Alumni who attended Houston (Texas) Section meeting August 29 at the College Inn in Houston. First row, left to right: Hans Schmoldt '44, F. P. Shayes '17, R. G. Prough '38, K. F. Hasselmann '25, W. C. Powell '17, M. C. Lucky '17, and M. A. Ledford '25. Second row: E. A. Zwald '44, R. P. Ridley '40, W. D. Kent '43, L. D. Olafson '43, P. J. Moore '39, C. C. Palmer '40, Arme K. P. Hermann '36, and N. K. Brill '42. Back row: B. F. Morgan '25, H. C. Stevens '41, J. V. Spalding '39, R. C. Graham '31, O. K. Holman '37, and C. W. Magalis '25. Those who attended the meeting but were not present when picture was taken are C. T. Millice '36, and J. P. Rasor '36.



### **R.G.Prough '38 Acting Chairman Houston Section**

Karl F. Hasselmann '25 resigned as chairman of the Houston, Tex., Section of the Alumni Association, appointing R. G. Prough '38 acting chairman to complete his term at a meeting Aug. 29 at the College Inn in Houston. Mr. Prough's appointment extends to Jan. 1, 1947.

Twenty-three members of the Association attended the meeting. Special commendation was given Hans Schmoldt '44, who drove from Borger, Tex., to attend. Mr. Schmoldt is planning to form a Panhandle section which he hopes to get under way soon. J. P. Rasor '36 and C. T. Millice '36 came to the meeting from Jackson, Miss.

Suggestion was made that the Houston Section hold monthly luncheon meetings similar to those held by the New York Section. This was endorsed by a majority. It was also suggested that there be more entertainment at meetings to serve as an added incentive for members to attend meetings.

There was a discussion of the importance of promoting interest among the school's professors in the Alumni Association. It was pointed out that this could best be achieved by contributions of equipment and constructive ideas to the school.

All members were urged to attend the Homecoming-75th Anniversary celebration and were assured that accommodations could be obtained.

### **Chicago Section Holds Luncheon Meeting**

The weekly noon luncheons of the Chicago Chapter of the MSM Alumni Association have been resumed and are being held every Monday at the Chicago Engineers' Club, 314 South Federal street. Those recently attending meetings have been: W. R. Burgoyne '35; K. R. Tuckett '39; H. A. Herder '26; J. Hopkins '13; R. C. Miller '29; H. H. Clark '15; R. K. Comann '43; E. H. Cook '27; D. P. Hynes '08; J. C. Ingram '13; W. Schweidkhardt '28; M. E. Nichel '38; C. A. Walls '24; L. E. Grafft '37; R. H. B. Butler '09; T. J. Dover '30; H. J. Pfeifer '36; Craig Ellis '38; B. L. Chaney '27.

If any of you graduates are in our vicinity we would be glad to have you attend our luncheons. Call L. E. Grafft, phone State 9400 for reservations.

The Chicago Chapter of the MSM Alumni Association

regrets the loss of one of their most active members, Mr. C. W. Johnson '29, formerly of the Johnson Manufacturing Company at 729 W. Washington street, Chicago, Ill. Mr. Johnson is now plant manager of the Johnson Gas Appliance Company located at 520 E avenue N.W., Cedar Rapids, Ia. The Chicago address is now only a sales office and all manufacturing will be done at Cedar Rapids.

### **Tulsa Group Hears Dr. Grawe**

#### **of MSM Geology Department**

Dr. O. R. Grawe, chairman of the Geology department at the School of Mines, talked before the Tulsa Section at a meeting at the Hotel Tulsa on Aug. 29.

He addressed the group on "A New Era in Higher Education," discussing the changes being brought about in American colleges as G. I. Joe turns from soldier to scholar, and of the challenge which this new type of more mature and more widely experienced student is presenting to the American institutions of higher education.

He told of the expansion taking place at MSM to meet this challenge. In particular, he discussed the plans for future development of the Geology department.

Dr. Grawe spent the week of Aug. 26-31 visiting the offices and laboratories of a number of oil companies and discussing problems of educational interest with the executives of these companies. Contacts with several of the organizations were made through the courtesy of Dr. J. M. Wanenmacher '23, president of the Tulsa Section.

Those present at the meeting were: A. L. Ackers '22; W. A. Baker '36; R. L. Braeutigam '33; Guy Brown '40; C. V. Cameron '38; A. H. Kemp '29; J. R. Klug '40; A. A. Phillips '38; J. F. Reed '40; Charles Rodd '33; J. L. Shafer '43; A. W. Walker '24, and Dr. Wanenmacher. Guests at the meeting besides Dr. Grawe were W. F. McConnell '42 of Dallas, Tex., and Dr. A. J. Miles '30 of Rolla, Mo.

### **Fall Meeting of Los Angeles Section held Oct. 12**

The Fall meeting of the Los Angeles Section of the M S M Alumni Association was held Saturday evening, Oct. 12, at the Wilshire Melody Lane in Los Angeles. Interesting letters were read from J. D. Harlan, who did not attend because of a trip to Seattle, and Ted Lynton, who is

(Continued to Page 15)

## ABOUT TOWN AND CAMPUS

Homecoming is in the air again in Rolla. With perfect football weather in the offing and one win under their belts, the Miners should put on a game to rival that of the "good old days."

In reviewing the football season of 1916 we quote from the Rollamo: "In looking back upon the football season it seems that there is more that can be left unsaid than said." This might be explained by the fact that they won only one of eight games played, and that with a margin of safety of one point.

However, that was after the last war, and Coach Dennie had only 20, mostly unexperienced men, to draw from.

Then, too, there are the other phases of Homecoming. The backslapping, handshaking and spirit of good fellowship always prevails at the stag smokers. The Missouri Miner tells us that back in 1927 at one of these Homecoming smokers "Prof. Dean was given his first unworkable problem by the Miners from Texas, and that was how to smoke a long, black Mexican cigar." The problem remains unsolved, but the anecdote is a reminder of the jovial atmosphere at these annual get-togethers.

The old Harvest Moon will shine again just the same way as in the past through the oak trees lining the walk to Jackling Gym setting the scene for the Ball. And there is little doubt that the Ball will be the same ever with little room to dance and those happy greetings rising above the music from time to time.

Old landmarks are evident around the campus. The Missouri Geological Survey has been moved from the Rolla Building and classes are being held there once more. Already 11 of the rooms are used by the newly created Humanities department.

Still standing in the center of the campus is the fountain dedicated to Eddie Bohn, a renowned Miner football player who died Nov. 8, 1920 as a result of injuries received in the Warrensburg-Miner game the previous Saturday.

The lamp posts around the campus are a memorial to the Class of 1924 and the benches which grace the lawns were placed there by the Class of 1941.

You might notice that the flag pole which stood in front of Parker Hall is gone. It was removed during the summer because it had begun to rust around the base and was beginning to sway precariously during storms. The flag pole was dedicated by the Class of 1917. The flag is now hoisted atop the gym.

Rolla is still the sleepy little town nestled at the foot of the Ozarks, despite the assertions of its Chamber of Commerce. However, changes, and drastic changes at that, have taken place. Lee Mook '21, Leasburg, Mo., on seeing the little yellow busses around town, declared, "Now I've seen everything!" Yes, Rolla has city bus service.

Smith's billiard hall at 9th and Pine streets has changed hands again. The new management has installed some super-deluxe billiard tables and a modern soft drink fountain.

Remember the days back in about 1919 when Harvey and Smith ran ads in the Miner like this?

H. & S. Cigar Store  
Fine Candies and Smoker's Articles  
Rolla's Theatre  
Only the Best of Pictures  
Harvey's Billiard Hall  
Good Tables  
MSM Student's Resort  
All in the Cowan Block.

It was in that year, after the Miners had been trounced by Arkansas 7-0 that there was a "Big Serenade at Harvey's Square Dance." They even passed out programs.

Wallace Tucker, owner of "Tuck's" or the "Rolla Soda

(Continued to Page 17)

### New Geological Survey Building Dedicated in Memory of "Chief" Buehler



Photo—Esquire Studio, Rolla

The Buehler Building, new home of the Missouri State Geological Survey located at 9th and Rolla streets in downtown Rolla, was dedicated Sept. 27 by Gov. Phil M. Donnelly.

While a large crowd watched, Gov. Donnelly hoisted the official State flag over the building, dedicating it as a memorial to Dr. H. A. "Chief" Buehler, who served Missouri as a geologist from 1908 until his death in 1944.

"The fruit of the 'Chief's life-long work and service in industry is testified by the fact that Missouri's mineral production in 1901 was less than \$15,000,000 whereas it approximated \$75,000,000 in 1943," Gov. Donnelly said. He also congratulated Dr. Edward L. Clark, present State Geologist, in establishing the Survey in its new home.

Master of Ceremonies at the dedication was Howard I. Young '39 (honorary), president of the American Zinc, Lead and Smelting Company and president of the American Mining Congress.

Dr. Morris M. Leighton, chief of the State Geological Survey Division of the Department of Registration and Education in Illinois, emphasized the need for continued development of the natural resources because of industry's heavy drain constantly depletes them.

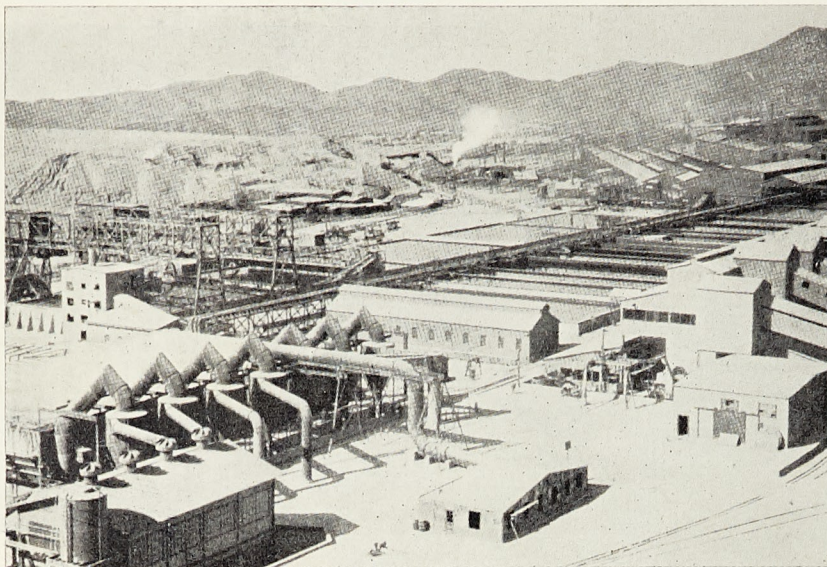
Paying tribute to Dr. Buehler, George C. Smith, president of the St. Louis Chamber of Commerce, told of the instances in which the Missouri Geological Survey has been of assistance to industry throughout the State of Missouri. He cited coal, lead, iron, clays and other Missouri resources as "practically indispensable in our present industrial and social structure."

"Now our subsoil products are receiving scientific treatment," Smith continued. "The organic chemist, by various methods, turns them into alcohol, solvents, plastics, tars, dyes, drugs and sugars. The inorganic chemist turns stones into metals and wood, sand into glass and gypsum into boards."

Dr. Clark announced that the Buehler family has donated "Chief" Buehler's library to the State for use by the Survey. Before moving into the new building, the Survey was housed in the old Rolla building on the campus. This building has been remodeled for use by the newly created Humanities department.

# MSM MEN IN INDUSTRY

## The Early History of Chuquicamata



The Copper Reduction Works,  
Chile Exploration Co.,  
Chuquicamata, Chile

By JAMES L. HEAD '16  
Mining Engineer, Chile Exploration Co.,  
New York City

World renowned Chuquicamata, in northern Chile's desert region, the largest body of copper ore yet discovered, dates its modern aspect from 1910 when its potentialities as a large-scale, low-grade and low-cost mining operation were seriously considered. Its history before that, stretching over some four centuries of the dim past, is largely a matter of rumor, fiction and conjecture with few known facts before the 1870's.

It is doubtful whether the true nature and utility of the vivid green and blue copper minerals of Chuquicamata were understood by the primitive people who inhabited the nearby Rio Loa settlement of Chui-Chui and fortified Pucará prior to the coming of the Incas, but beads and trinkets exhumed from their burial grounds attest to an appreciation of the ornamental nature of the material.

Rumor has it that the Incas, in the southward expansion of their empire into northern Chile late in the 15th century, erected a crude furnace on the banks of the Rio Salado to smelt copper ore from Chuquicamata and that they also mined gold in the area prior to the days of the first Spanish conquest.

In July 1535 Diego de Almagro, a General of King Carlos V of Spain, set out from Cuzco, in southern Peru, to conquer Chile, which had been represented to him as rich in precious metals. Almagro himself chose a route along the eastern border of the Bolivian Plateau, but a part of his forces undertook the journey to Chile by sea. Shipwrecked near Arica, the survivors made their way inland, reached the Rio Loa which they followed as far as Chui-Chui, and then proceeding southward along the mountains reached the valley of the Aconcagua where they rejoined Almagro.

In 1536 Almagro, after many hardships and disappointments in his search for precious metals, decided to return to Peru. Heavy snow in the high mountains forced him to return by way of Chui-Chui and Pucará, which he captured and destroyed. From the primitive smelting operations on the Salado he is supposed to have obtained metallic copper for shoeing his horses. Pedro Valdivia visited the neighborhood on his way to Chile in 1540. His men made an un-

successful attempt to work the gold deposits near Chuquicamata.

It apparently was not until the discovery of silver in Bolivia in 1555 that interest was focused on the copper deposits. Demands from the Bolivia mining districts for copper sulphate for use in the mills caused the erection of other crude smelting furnaces. At one time as many as four furnaces were believed to have been in operation along the Loa and Salado rivers where there then was an abundance of Algarrobo wood, suitable for producing charcoal for use in the smelting operations. Little is known about the mining methods, but they must have been primitive and carried on intermittently in a small way, first by the Spaniards and later by Bolivians and Chileans.

To one Luis Camus, a Chilean, goes the credit for the first attempt to exploit the lower grade material of the main deposits rather than the relatively higher grade but less abundant ores from the adjacent narrow veins. This was in 1879 following the war between Bolivia and Chile, as a result of which any Bolivian titles to mines in the area were voided. In 1882, the first postwar legal denouncement of a mining claim at Chuquicamata was effected. From that time many claims were located and the mineralized areas were held pretty continuously. Mining, however, was on a very small scale. The ore had to be hand-sorted and then sent on pack mules some 81 miles to the then terminus of the Huanchaca Railroad. The railroad from Antofagasta did not reach nearby Calama until 1888.

About 1898 Norman Walker, a Scottish merchant of Antofagasta, foresaw the great possibilities of the main low-grade orebody. He acquired considerable of the property and experimented with a treatment process. Initial efforts to interest English capital in the project were unsuccessful, but in 1899 Walker was instrumental in having the firm of Duncan, Fox & Company form the Compañía de Cobre de Antofagasta. It was proposed to ship a sorted, highgrade ore to England for smelting. The operation proved uneconomical and was discontinued in 1906.

A similar unsuccessful venture was that of the Sociedad Explotadora de Chuquicamata, organized by the Valparaíso firm of Wilber & Company. A third group, the Poderosa Company of Messrs. Enrique Villegas and Walter G. An-

(Continued on Next Page)

## MSM MEN IN INDUSTRY

### Chuquicamata (Continued)

draws, developed richer ores in their property and at times were able to show a profit.

It was the Duncan, Fox holdings, the Compañía de Cobre de Antofagasta, that were brought to the attention of Albert C. Burrage of Boston, Mass. This was in September 1910, while Mr. Burrage was in London investigating low-grade copper deposits suitable for treatment by a new process, in which he was interested. He obtained a long time option on the property and sent representatives to Chile early in 1911. Similar agreements were reached with the other two companies mentioned above, and by early 1912 Mr. Burrage had options on a considerable portion of the entire Chuquicamata "Hill." Water and power rights necessary for a large scale operation were also obtained.

At about the same time the important mining firm of M. Guggenheim's Sons became interested in the potentialities of the Chuquicamata deposit, but they found the chief properties already optioned to Mr. Burrage. However, in January 1912 the latter entered into an agreement with Mr. Daniel Guggenheim who organized the Chile Exploration Company to take over the future development of the deposit and perfect a process to treat the ores. In order to obtain more knowledge of the extent and character of the deposit, prospect churn drilling was started in April 1912.

Within a few months the drilling indicated that the deposit exceeded expectations as to extent, depth and copper content. Meanwhile work had proceeded on the development of another treatment process, the one investigated by Mr. Burrage being unsuited. Before the end of the year it was decided that the results warranted the purchase of the properties, their development as a large open-pit mine, and the construction of a treatment plant. Work on the latter was begun early in 1913 and despite the difficulties in obtaining construction materials and operating equipment due to the start of World War I, it was successfully put into operation on May 18, 1915.

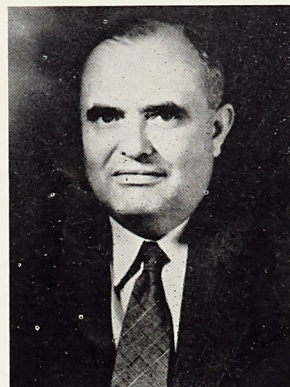
During the years when mining operations had been confined to small individual properties, groups of rude huts and shacks had housed the few miners. Concerning one or two of the larger groups and of the settlement "Punta de Rieles," at the end of the railroad spur from Calama, there had grown up a collection of tales of gambling, robbery, murder, etc., reminiscent of pioneer mining days the world over. Conveniences for living were lacking completely; food, water and supplies all had to be carted in. Now within the short space of two years a flourishing and modern mining town had been established in a formerly barren spot. Water had been piped in from sources about 40 miles distant, and electric power was transmitted from the Company's new power plant on the coast, 87 miles away.

The story of the modern Chuquicamata has been told too often to be repeated here. Starting with a plant to treat 10,000 tons of ore per day, successive additions have brought the capacity up to 60,000 tons per day, and a corresponding copper production of 530,000,000 pounds per year. Ore reserves, estimated at just under 100,000,000 tons at the time plant construction was started, became ultimately a billion tons. In 1923 control of the Company was acquired by the Anaconda Copper Mining Company, which has been responsible for the subsequent expansion and increased production.

(Reprinted from Chilean Gazette.)

### Dr. Reginald Dean Resigns Position with U. S. Bureau of Mines

Dr. Reginald S. Dean, who received a degree of Bachelor of Science in General Science from the Missouri School of Mines in 1915 and a degree of Master of Science in the same field here in 1916, has resigned as Assistant Director of the U. S. Bureau of Mines in Washington, D. C., it was learned here recently.



As the head of the Metallurgical Division of the Bureau, Dr. Dean was responsible for the initiation of the Bureau's work in pure minerals metals, including electrolytic manganese, electrolytic chromium, ductile titanium, cobalt, zirconium and others. He also directed a program of alloy development based on these metals as well as work on the magnetic separation and flotation reagents.

Under the direction of Dr. Dean the Bureau's laboratory facilities were expanded from a few minor installations on university campuses to a group of the finest metallurgical laboratories and pilot plants. These include pilot plants at Boulder City, Nevada; Experiment Stations at Salt Lake City, Utah, and Raleigh, North Carolina; the Northwest Electro Development Laboratory at Albany, Oregon, and the Electric Steel Pilot Plant at Redding, California. Also included in the expansion of the Bureau's work is the comprehensive building plan under construction here. He was with the Bureau 17 years.

During the war, Dr. Dean left his headquarters at Salt Lake City to accept the Assistant Directorship of the Bureau in Washington, D. C., and represented the Department of the Interior on the Mineral Resources Operating Committee of the War Production Board. Dr. Dean will continue professional work as consultant engineer in Washington on development of electrometallurgy and alloys.

### "Ham" Moore ex-'23

#### President of California Company

B. H. "Ham" Moore gives us an account of his activities in a recent letter. After leaving MSM, "Ham" went to work for the Laclede-Christy Clay Products Co., in St. Louis. He remained there for several years as a member of the sales staff, then became associated with the Mexico Refractories Company at Mexico, Mo.

"Ham" later joined the A. P. Green Firebrick Co. at Mexico and has been associated with this firm for about 14 years. He is now president of the E. J. Bartells Co., of California which supplies A. P. Green products in the San Francisco area.

In his letter "Ham" confirmed the information that W. R. "Roy" Gettler '22 is also connected with the Bartells Company, handling engineering work in connection with installation of refractories.

"Ham's" present business address is 2350 Jerrold street, San Francisco, Cal., but will be changed to 580-Indiana street, San Francisco, after Nov. 15. His home address is 2335 Pacific avenue, San Francisco.



## MSM MEN IN INDUSTRY

### Dan Shay Brings in Well in Cat Creek Field

Dan Shay ex-'27 has completed his first well on the East dome of the Cat Creek Field, Petroleum Company, Mont.

This well is an outpost and slightly more than one-half mile northwest of the East dome deep sand discovery well. It flowed an estimated 50 barrels daily while casing was being run.

The well is designated "D. C. Shay, Northern Pacific Railroad No. 1" and is located in the SE $\frac{1}{4}$  SE $\frac{1}{4}$  NE $\frac{1}{4}$  Sec. 1-14N-30E. The well was drilled to a total depth of 1781 feet and in the Ellis sand topped at 1777 feet recovered 12 feet of oil saturated core. The completion gives added interest to the territory to the northwest on the structure.

### G. F. Metz Made Supervisor of Sales Promotion for Hardinge Co.

Recently Supervisor of Sales Promotion in addition to his duties as District Manager for the Hardinge Co., Inc., offices in York, Pa., Gil Metz '14 finds his work heavier now than at the height of the war rush.

"Our main difficulty is getting the steel plate, speed reducers, motors etc.," he writes. "Some of these days we are going to have to do some real selling again. I am hoping that out of the large crop of G.I.'s returning to Engineering Schools we will be able to get a few good men who can sell machinery.

"I feel that the schools would do well to incorporate a short course in Sales Engineering," he continues. "We will need good salesmen to sell the equipment in order to furnish the production jobs."

Mr. Metz tells us that his oldest daughter, Maryjane, is in Okinawa serving as Senior Staff Assistant for the Red Cross. Another daughter, Lillian, was graduated with honors from Hood College in June, and Gil Jr. is entering Farragut Academy in preparation for entrance in the Naval Academy.

### S. A. Lynch '28 Heads Geol. Dept. at Texas A & M

S. A. Lynch is now head of the Department of Geology at the Texas A & M College, College Station, Tex. Shirley writes that they expected 8000 or more students there this fall.

He will continue his research work with certain oil interests in Dallas in connection with his teaching and hopes to develop close cooperation between his college and the petroleum industry in the Southwest.

### A. J. Hoeman '32 Rejoins Army

To the Alumni Association:

Your letter reminding me of dues just caught up with me. . . . My address may be chancey for a while longer, but I will try to keep you posted on changes hereafter.

For a bit of news, I give you the following information about myself. After being released in California last March 3rd as a Lt. Col., I tried being a civilian with my old company in St. Louis, Union Electric. At the end of July I re-entered the Army as a Major out here at Ft. Belvoir, Va.

I did a few weeks temporary duty at Walter Reed General Hospital checking up on their utilities systems while waiting for a permanent assignment. I now have that permanent (?) assignment, and it will be duty at the Ordnance Dept.'s Tank and Automotive Center in Detroit as Liaison Officer for the Research and Development Division of the Office of the Chief of Engineers. It sounds like a pretty good detail for a Mechanical Engineer—time will tell.

I'll send my Detroit address as soon as I am transferred.

Sincerely,

ARTHUR J. HOEMAN, Major, C.E.

His present home address is the Wardman Park Hotel, Washington 8, D.C. He gives his permanent address as: Research and Development Div., Office of the Chief Engineer, Army War College, Washington, D.C.

## VETS' OBSERVATION POST

### CVA to Aid in Solving Problems of Veterans

By GEORGE WOOD '47

With more than 80% of the net enrollment veterans of World War II, and with 26% of these veterans married, the campus picture has changed drastically from the pre-war status.

The problem arises not so much from the double normal enrollment as from a change in the basic requirements of a major portion of the students and confronts equally the school administration, the community, and the student. The efforts of the Campus Veterans' Association has been directed toward a workable solution of these problems.

The CVA was started on this campus with only four members, associated to promote the fraternal spirit born in fighting men during this past National Emergency. It has become the major factor in political affairs on the campus with the advent of government sponsored education for the survivors of the last world conflict.

Today it represents the majority of the student body whose purposes, efforts and requirements are of a magnitude and intensity never before experienced in the history of our school.

The CVA, has in the past few semesters turned from its original purpose of a primarily social organization, to one of a more utilitarian structure. It has become adapted to bringing the mass influence of the GI students to bear upon the daily problems which suddenly have assumed first importance to all.

Without losing sight of the prime motivation of its existence, it also has become the instrument whereby the serious problem of the housing shortage has to a considerable degree been mitigated by the procurement of the Emergency Housing Units situated on the football field.

At the first meeting held this semester, Dean Wilson gave full credit to the CVA for obtaining action by the federal government toward relief of the student housing shortage when regular appeals made by the school authorities through official channels had failed.

Direct and properly guided organized action gets results, as the CVA has amply demonstrated, whether it be for purely social ends or the now all-important daily living requirements. The CVA has demonstrated its justification for existence and support by every person who has the best interests of the Missouri School of Mines and its present student population as well as the State of Missouri and the entire nation at heart.

The future of the Association depends largely upon the reception it receives at the hand of the authorities who pass judgment upon its relative merits as well as from the student body of which it is composed.

Its size and power have demonstrated the support of the student body. The results of its constructive policies have won the support of the school administration and the support of the Alumni in advancing the work of the association toward their mutual goal. In its individualistic way, the CVA will serve toward the betterment of all concerned.

### Lt. Jim Bottom '43 is in Hospital Overseas

Jim Bottom's mother writes:

"Jim was sent back overseas after he was at home in March of this year. He left the States again in May. After arriving at his destination he became ill and is now in a hospital on Guam. We do not know how long he will have to remain there." Mail will be forwarded to Jim from his home address, 5250 Bonita avenue, St. Louis, Mo.

# FACULTY DIRECTORY

## Faculty Members 1946-47

(Date after title of position indicates date of appointment to MSM on faculty)

### Administrative Officers:

**Dean Curtis L. Wilson**, Dean of the Faculty of the School of Mines and Metallurgy, Director of the State Mining Experiment Station, 1941. E.M. 1920, Montana School of Mines; Ph.D. 1928, University of Goettingen.

**Assistant Dean R. Z. Williams**, Professor of Mechanics, 1931. B.S. in Met. 1931, B.S. in C.E. 1937, Missouri School of Mines; M.S. 1936, Wisconsin.

### Mining Engineering:

**J. D. Forrester**, Professor of Mining Engineering, 1944. B.S. 1928 Utah; M.S. 1929; Ph.D. 1935 Cornell.

**F. A. Graser**, Associate Professor of Petroleum Engineering, 1946. B.S. in Mining 1924. University of California.

**L. E. Shaffer**, Assistant Professor of Mining Engineering, 1945. B.S. in Mining 1930, Iowa State.

**D. R. Schooler**, Assistant Professor of Mining Engineering, 1942. B.S. in 1926; E.M. 1944, Missouri School of Mines.

### Metallurgical Engineering:

**A. W. Schlechten**, Professor of Metallurgical Engineering, 1946. B.S. in 1937 Montana School of Mines; D.Sc. M.I.T., 1940.

**H. R. Hanley**, Professor Emeritus of Metallurgical Engineering, 1923. B.S. in Min.E. 1901; Met.E. 1918, Missouri School of Mines.

**C. Y. Clayton**, Professor of Metallurgical Engineering, 1913. B.S. in Met. 1913, Met.E. 1916, Missouri School of Mines.

**Adolph Legsdin**, Associate Professor of Mineral Dressing, 1940. E. M. 1923, Freiberg Mining Academy; M.S. 1933, Columbia.

**D. F. Walsh**, Assistant Professor of Metallurgy, 1925. B.S. in Met. 1923, M.S. in 1924, Missouri School of Mines.

### Geology:

**O. R. Grawe**, Professor of Geology, 1928. A.B. 1922, M.S. 1924 Washington; Ph.D. 1927, Iowa.

**G. A. Muilenburg**, Professor of Geology, 1916. B.A. 1912, M.S. 1913, Iowa; E.M. 1925, Missouri School of Mines; Ph.D. 1925, Columbia.

**K. E. Born**, Assistant Professor of Geology, 1946. B. S. McKendree College, 1930. M.S. Vanderbilt University, Nashville, 1931.

**R. H. Cowie**, Assistant Professor of Geophysics, 1946. B.S. 1938, California Institute of Technology; M.S. 1940, Ph.D. 1941, Minnesota.

**C. H. Summerson**, Assistant Professor of Geology, 1946. B.S. 1938, M.S. 1940, Ph.D. 1942, Illinois.

### Mechanical Engineering:

**A. J. Miles**, Professor of Mechanical Engineering, 1930. B.S. 1930, M.S. 1931, Missouri School of Mines; Sc.D. 1935, Michigan.

**G. C. Boyer**, Associate Professor of Mechanical Engineering, 1946. B.S. in E.E. 1925, Montana State College.

**A. V. Kilpatrick**, Associate Professor of Mechanical Engineering, 1926. B.S. in M.E. 1925, M.E. 1931, South Dakota State College.

**R. H. Young**, Associate Professor of Mechanical Engineering, 1925. B.S. in M.E. 1921, Georgia School of Technology.

**G. R. Guinnup**, Assistant Professor of Mechanical Engineering, 1939. B.S. in M.E. 1932, M.S. in M.E. 1933, Purdue.

**C. J. Thorpe**, Instructor of Mechanical Engineering, 1942. B.S. 1935, Missouri School of Mines.

### Chemical Engineering:

**W. T. Schrenk**, Professor of Chemical Engineering, 1923. B.S. Monmouth 1915; M.S. 1919; Ph.D. 1922, Wisconsin.

**K. K. Kershner**, Professor of Chemistry, 1920. B.S. M.S. in Chem. E. 1920, Missouri School of Mines.

**F. H. Conrad**, Associate Professor of Chemical Engineering, 1936. B.S. in Chem.E. 1923, Ph.D. 1934, Washington.

**C. J. Monroe**, Associate Professor of Physical Chemistry, 1921. S.B. 1917, Ph.D. 1921, Chicago.

**M. J. Caldwell**, Assistant Professor of Chemistry, 1946. B.S. Kansas State College 1931. M.S. Kansas State, 1933. Ph.D. Kansas State College, 1946.

**Emory D. Fisher**, Assistant Professor of Chemistry, 1946. B.S. Dakota Wesleyan University, 1931. Ph.D. 1935, University of Wisconsin.

**Alfred Marsh**, Assistant Professor of Chemical Engineering, 1945. A.B. in 1928, Maryville College, Tenn.; M.A. 1929, Alabama; Ph.D. 1934, Indiana; LL.B. 1939, Woodrow Wilson College.

**R. R. Cornwall**, Instructor of Chemical Engineering, 1946. B.S. and M.S. from Washington University.

**Wm. H. Webb**, Instructor in Chemical Engineering, 1938. B.S. 1935, Mississippi State College; M.S. 1939, Missouri School of Mines.

### Civil Engineering:

**Joe B. Butler**, Professor of Civil Engineering, 1920. B.S. in C.E. 1915, B.S. in Ed. 1924, Oklahoma A. & M.; C.E. 1922, M.S. in C.E. 1922, Missouri School of Mines.

**E. W. Carlton**, Professor of Structural Engineering, 1923. B.S. in Mech.E. 1920, M.S. in Indus. Ed., 1926, Colo. Agric. College; B.S. in C.E. 1926; C.E. 1935, Missouri School of Mines.

**Roy Bremer**, Assistant Professor of Civil Engineering, 1943. A.B.; 1929, Hope; M.S.P.H., 1940, Michigan.

**C. W. Eshbaugh**, Assistant Professor of Civil Engineering, 1943. B.S. in 1925, Kansas State College.

**V. A. C. Gevecker**, Assistant Professor of Civil Engineering, 1938. B.S. in C.E. 1931, Missouri School of Mines; M.S. in C.E. 1937, California Institute of Technology.

**E. R. Broadbent**, Instructor of Civil Engineering, 1946. B.S. 1940, Oklahoma A. & M.

**Leon Hershkowitz**, Instructor of Civil Engineering, 1946. B.S. in C.E. 1941.

**Ernst A. Weinel**, Instructor of Civil Engineering, 1946. B.S. in C.E. Missouri School of Mines, 1944.

**Glen N. Hackmann**, Instructor of Civil Engineering, 1946. B.S. in C.E. 1937, Missouri School of Mines.

### Electrical Engineering:

**F. H. Frame**, Professor of Electrical Engineering, 1914. A.B. 1912, Clark, E.E. 1924, W.P.I.

**I. H. Lovett**, Professor of Electrical Engineering, 1921. S.B. 1914 M.I.T.; E.E. 1924, Missouri School of Mines; M.S.E. 1928, Michigan.

**Fred B. Beatty**, Associate Professor of Electrical Engineering, 1946. B.S. in E.E. 1929, Missouri School of Mines. M.S. in E.E. Georgia School of Technology, 1934.

**C. T. A. Johnk**, Instructor of Electrical Engineering, 1942. B.S. 1941, Shurtleff College; B.S. 1942, Missouri School of Mines.

**Gabriel Skitek**, Instructor of Electrical Engineering, 1946. B.S. in E.E. Missouri School of Mines, 1943.

**Wm. A. Ford**, Instructor of Electrical Engineering, 1946. B.S. in E.E. Missouri School of Mines, 1938.

### Ceramic Engineering:

**Paul G. Herold**, Professor of Ceramic Engineering, 1936. B.Cer.E. 1931, M.S. 1932, Ph.D. 1934, Ohio State.

**T. J. M. Planje**, Instructor in Ceramic Engineering, 1946. B.S. in Cer. Eng. 1940, Missouri School of Mines.

### Mathematics:

**R. M. Rankin**, Professor of Mathematics, 1922. A.B. 1916 Maryville Tenn. College; A.M. 1922, Chicago; B.S. in C.E. 1927, Missouri School of Mines.

**F. E. Dennie**, Associate Professor of Mathematics, 1909. B.S. in C.E. 1909, Brown.

**E. A. Goodhue**, Associate Professor of Mathematics, 1925. A.B. in 1917, Amherst; B.S. 1920, California Institute of Technology; M.S. 1927, Missouri School of Mines.

**Paul N. Russell**, Assistant Professor of Mathematics, 1946. A.B. in 1929 in Math. John Fletcher. M.S. Physics, 1930, University of Michigan.

**S. C. Bayless**, Instructor of Mathematics, 1946. B.S. in Ed. 1934 Missouri University; M.S. 1945, Washington.

**James F. Conbs**, Instructor of Mathematics, 1946. B.S. in Electrical Engineering 1946. University of Notre Dame.

**R. A. Eck**, Instructor of Mathematics, 1946. B.S. in Mining Engineering, 1943, Missouri School of Mines.

**C. A. Johnson**, Instructor of Mathematics, 1946. B. Ed. 1937, Northern Illinois State Teachers College; M.A. 1940, Northwestern.

**Richard H. Kerr**, Instructor of Mathematics, 1946. A.B. 1929, Southwest Missouri School of Mines.

(Continued to Page 16)

# HOME COMING

## Hi-Lites of Celebration

By JAMES J. JELINEK, Professor of English

In marking the observance of its Seventy-fifth Anniversary, the Missouri School of Mines is arranging a gala celebration which will begin Oct. 26 and will be highlighted by Engineers' Day and Parents' Day, Homecoming, Graduation, and meetings of the American Society of Engineering Education and the Missouri Academy of Science.

Homecoming, according to Prof. R. Z. Williams, assistant dean and chairman of the Homecoming committee, will be held on Nov. 9, at which time the football game between the Miners and Pittsburg Teachers College of Kansas will be played.

A traditional Dinner-Smoker will be held in the evening and, as in the past, will probably be a stag affair. Plans are being made by Mrs. Margaret McCaw Lloyd to provide entertainment for the wives, sweethearts, and guests of alumni while they attend the Dinner-Smoker.

After the Dinner-Smoker the Homecoming Ball sponsored by the St. Pat's Board will be held in Jackling Gymnasium. Proceeds of the ball will go to the St. Pat's Board to be used to stage the annual St. Pat's celebration. A very large attendance at the ball is expected.

During the forenoon of Homecoming Day, alumni will register in the lobby of Parker Hall and will have opportunity to renew acquaintances with faculty members, townspeople, and former classmates. Tentative plans also provide for a special meeting of the alumni in the auditorium of Parker Hall to commemorate the school's seventy-fifth anniversary. Featured at this meeting will be talks by Dean Curtis L. Wilson; Mr. F. C. Schneeberger, president of the Missouri School of Mines Alumni Association; and prominent alumni.

After the special meeting, fraternities and clubs are expected to have luncheons for their members and guests.

The traditional Parents' Day and Engineers' Day to be held Nov. 2 will also be a part of the Missouri School of Mines Seventy-fifth Anniversary and will provide opportunity for fathers and mothers of students as well as many visitors and guests to observe all laboratories and instructional facilities of special interest on the MSM campus, according to Prof. I. H. Lovett, chairman of the Engineers' Day committee.

Exhibits in the laboratories will show arrangements of equipment and will demonstrate standard methods of testing for typical student experiments. Other exhibits will show special apparatus used for specific purposes. A few displays will show parts of equipment arranged so as to illustrate fundamental principles related to operations.

These various exhibits together with samples of students' work in certain departments will illustrate part of the program of engineering education at the Missouri School of Mines. However, a considerable part of this program such as the lectures, classroom discussions, and examinations can not be shown.

With the Missouri School of Mines enrollment now at its all-time peak, it is anticipated that a record attendance will be evident at this Parents' Day and Engineers' Day.

Members of Blue Key and Alpha Phi Omega service fraternities will act as student guides to conduct tours of the campus. Also, special guides will describe the various departmental exhibits.

Since the formal opening of the Missouri School of Mines on "Dedication Day," Nov. 23, 1871, the school has expanded from an institution with one building, two faculty members, and 28 students to a modern school of technology valued at more than \$3,000,000 having about 100 faculty members and an enrollment of approximately 2100.

Established in 1871 and maintained jointly by the State of Missouri and the Federal Government, under the provisions of the Morrill Act of 1862 which made Land Grant schools

possible, the Missouri School of Mines has provided technical and scientific education to more than 10,000 from every state in America as well as many foreign countries.

By maintaining seven major departments, the Missouri School of Mines now grants degrees in Science and Ceramic, Chemical, Civil, Electrical, Mechanical, Metallurgical, and Mining Engineering. The school also has seven scientific and service departments: Humanities and Social Studies, Engineering Drawing, Geology and Mineralogy, Mathematics, Military Science and Tactics, Physical Education, and Physics.

The members of the Seventy-fifth Anniversary Celebration Committee appointed by Dean Curtis L. Wilson are Dr. W. T. Schrenk, chairman of the Chemical Engineering department; Prof. J. B. Butler, chairman of the Civil Engineering department; Prof. H. R. Hanley, Department of Metallurgical Engineering; Prof. I. H. Lovett, Electrical Engineering department; Dr. A. J. Miles, chairman of the Mechanical Engineering department; Prof. W. J. Jenson, Physics department; Prof. S. H. Lloyd, chairman of Humanities and Social Studies department; Prof. F. E. Dennie, Mathematics department; Prof. R. Z. Williams, assistant dean and chairman of the Mechanics department.

As planned by the committee, the schedule of events for the Seventy-fifth Anniversary program is as follows:

Oct. 26—American Society of Engineering Education Meeting.

Oct. 31—Missouri Academy of Science meeting.

Nov. 2—Parents' Day and Engineers' Day.

Nov. 6—Conferring of honorary degrees and dinner meeting.

Nov. 8, 11 a.m.—Registration in Parker Hall. Inspection of campus. Good fellowship meetings.

Nov. 8, evening—Informal dances and parties at fraternities, clubs, and private homes.

Nov. 9, 8 to 11 a.m.—Registration continued. Inspection of campus continued.

Nov. 9, 11 a.m.—Special Homecoming Convocation. Address by prominent alumnus. Short talks by Dean Curtis L. Wilson and alumni.

Nov. 9, 12:15 p.m.—Luncheon with fraternities, clubs, etc.

Nov. 9, 2 p.m.—Homecoming parade through town, led by Military Band.

Nov. 9, 2:30 p.m.—MSM vs. Pittsburg (Kansas) Teachers College.

Nov. 9, 6:30 p.m.—Annual stag, dinner-smoker for alumni. Dinner and entertainment program for ladies of alumni.

Nov. 9, 10 p.m.—Annual Homecoming Ball at Jackling Gymnasium.

## Prominent Alumni to Return for Homecoming; Several Classes Plan Reunions

This is the year for setting records with the enrollment up at the 2100 mark, and according to all indications there will be more men back for the Homecoming-75th Anniversary celebration than ever before.

Among the notables who plan to take in the festival are D. C. Jackling '92 and A. E. Wishon '09. Both have taken an avid interest in the affairs of the School of Mines and its Alumni, and are traveling here from California to meet and greet their classmates and friends.

Eugene McAuliffe, who received a degree of Doctor of Engineering (*honoris causa*) in 1927, and is one of the past presidents of the American Institute of Mining and Metallurgical Engineers, also has made known his intention of returning to Rolla during the week of Nov. 2-9.

James L. Head '16, chairman of the Alumni Association Membership Committee, organized the Class of 1916 for a reunion luncheon on Saturday, Nov. 9. Mr. Head is com-

(Continued to Page 15)

## DIRECTORY OF ROLLA RESTAURANTS

"Chicken in the Basket" is Our Specialty — Try It

WE MAKE OUR OWN ICE CREAM

### BLACKBERRY PATCH

6TH BETWEEN PINE AND ELM

OPEN — 6 A.M. TO 12 MIDNIGHT

### BELL'S CAFE AND CAFETERIA

HIGHWAY 66 AND ELM STREET

Rolla's Only Cafeteria

OPEN 24 HOURS

ALWAYS PLENTY OF SPACE

### ROLLAMO SODA SHOP

"NEXT TO THE ROLLAMO THEATER"

208 W. 8TH STREET

SANDWICHES SOUPS

*Complete Fountain Service*

WALLACE TUCKER, PROP.

### SNO-WHITE GRILL

805 N. ROLLA STREET

DINNERS — STEAKS — CHICKEN

SANDWICHES CHILI

WE SPECIALIZE IN SHORT ORDERS

### MONTGOMERY'S CAFE AND RENDEZVOUS

209 W. 8TH STREET

DIEHL MONTGOMERY, PROP.

### HARVEY'S RESTAURANT

PINE STREET NEAR SEVENTH

STEAKS CHOPS DINNERS  
COUNTER TABLES BOOTHS

EAT IN OUR

COMFORTABLE AND ATTRACTIVE

DINING ROOM

### COLONIAL VILLAGE

HIGHWAY 66 EAST

### RAMEY'S

HIGHWAY 66 AND 63 AT NORTHWYE

HAMBURGERS AND FRENCH FRIES

OUR SPECIALTY

*Dinners Sandwiches*

TABLES — BOOTHS — COUNTER

CLEAN SANITARY

MSM ALUMNI WELCOME

### PENNANT TAVERN

HIGHWAY 66 EAST

DINNERS FRIED CHICKEN

STEAKS SODA FOUNTAIN

ROLLA'S LARGEST DINING ROOM

#### WANTED:

Every ALUMNUS, when in Rolla, to call at

### SCOTT'S—The MINERS' CO-OP and BOOK EXCHANGE

TEXT BOOKS, DRAWING INSTRUMENTS AND  
SCHOOL SUPPLIES. Reference: Any old MINER.

59 YEARS AT THE SAME OLD PLACE, 8TH & PINE

JNO. W. SCOTT, M.S.M. ex-'87, PROP.

## DIRECTORY OF ROLLA RESTAURANTS

### **TRAV-L-ODGE**

COFFEE SHOP

HIGHWAY 66 EAST

$\frac{3}{4}$  Mile from Downtown Rolla

STEAKS — CHOPS — FRIED CHICKEN  
SANDWICHES

OPEN 6 A.M. TO 10 P.M.

### **GADDY'S DRUG STORE**

A WALGREEN AGENCY

9TH AND PINE

SANDWICHES

FOUNTAIN SERVICE

DRUGS

SUNDRIES

### **UNION BUS DEPOT**

TRANSPORTATION

FOOD

J. J. SAND

PHONE 745

### **PERRY'S CRESCENT**

$\frac{1}{4}$  Mile East of Highway 66 on Highway 63

STEAKS DINNERS SANDWICHES

QUICK SERVICE

COUNTER AND BOOTHS

### **DEEN'S AIR CASTLE**

HIGHWAY 66 EAST

NEXT TO ROLLA AIRPORT

SANDWICHES LUNCHES

SOFT DRINKS

DANCING AND BOWLING

OPEN 'TIL MIDNIGHT

SATISFY YOUR APPETITE

AT

### **TOKY'S BAR-B-Q**

EAST HIGHWAY 66

IN CITY LIMITS

### **EAT AT EARL'S**

909 PINE STREET

## **HOMEcoming-75TH ANNIVERSARY**

### **FOOTBALL GAME**

Saturday, November 9 — 2:30 P.M.

Jackling Field

Saturday, November 9

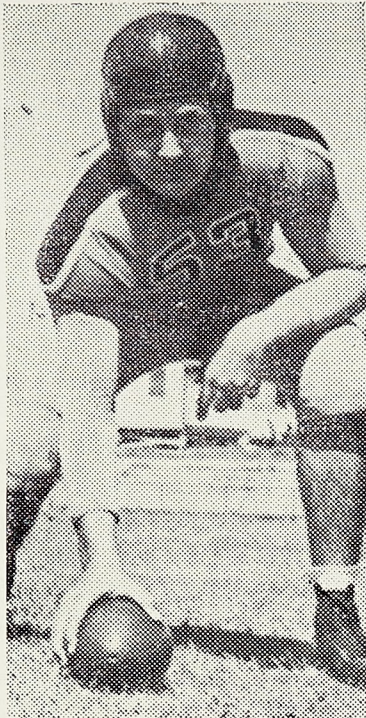
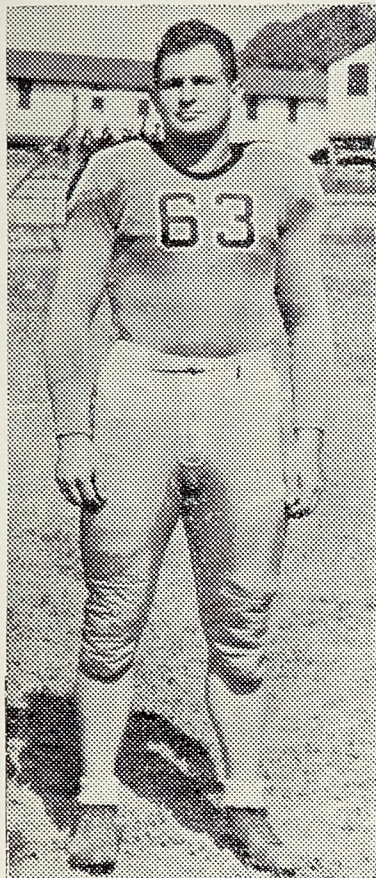
## **DANCE**

Charlie Faulkner's Orchestra

Jackling Gym

9 P.M.—1 A.M. (Informal)

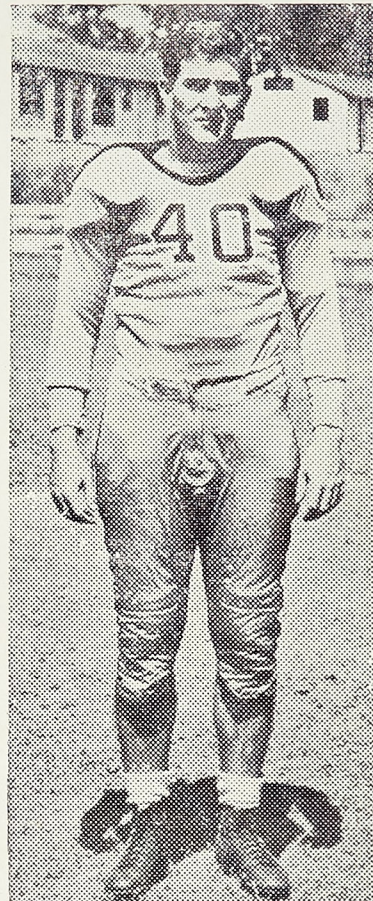
## ATHLETICS



ROY SHOURD  
Center

GILBERT CARAFIOL  
Full Back

JIM McGRATH  
Left End



### MSM Football

By GENE TYRER '48

The Missouri School of Mines 1946 football season opened with the traditional contest with St. Louis University on Sept. 20. Although the Miners dropped this contest by a score of 24-0, they played good football and showed promise in all aspects of play. Were it not for an excellent St. Louis U. passing attack, the final result could conceivably have been quite different.

Central College was the next Miner foe and the team from Fayette, Mo., fell before the fighting Rolla squad, 12-6. This was the first time MSM had won a football game in two seasons. In 1945, the record stood at five losses in as many engagements. Central proved to be a tough, battling team on that cool Friday evening, Sept. 27. The Miners rushed to two early touchdowns and then permitted a score against them in the final period. With this victory the outlook on the balance of the season naturally became considerably brighter.

The third game on the schedule found the Miners pitted against Oklahoma City University on Oct. 5. The final results showed Oklahoma City on the long end of a 74-6 count. Truly an overwhelming score, but also, an overwhelming team. The Miners were up against a squad reported to be the heaviest in the country. Boasting a line scaling 215 pounds a man, the Chiefs had an easy time in the fray.

At the date of this writing, there remain on the schedule six more games; five conference battles and one non-conference tilt with the Pittsburg, Kansas Teachers on Nov. 9, homecoming day.

The Missouri Intercollegiate Athletic Association which includes five teachers colleges, namely, Kirksville, Warrensburg, Cape Girardeau, Springfield, and Maryville, as well as

the School of Mines, is reportedly very strong this season as it has always been in the past. With all the remaining contests against teachers colleges, the Miners will have an uphill struggle throughout.

Football contests will be a center of attraction of both Parents' Day and Homecoming this year. The Parents' Day affair on Nov. 2 will find the Miners engaging Springfield while the Pittsburg, Kansas Teachers will furnish the opposition on Nov. 9, Homecoming Day. Both games promise to be very good and from all indications, they will be well attended.

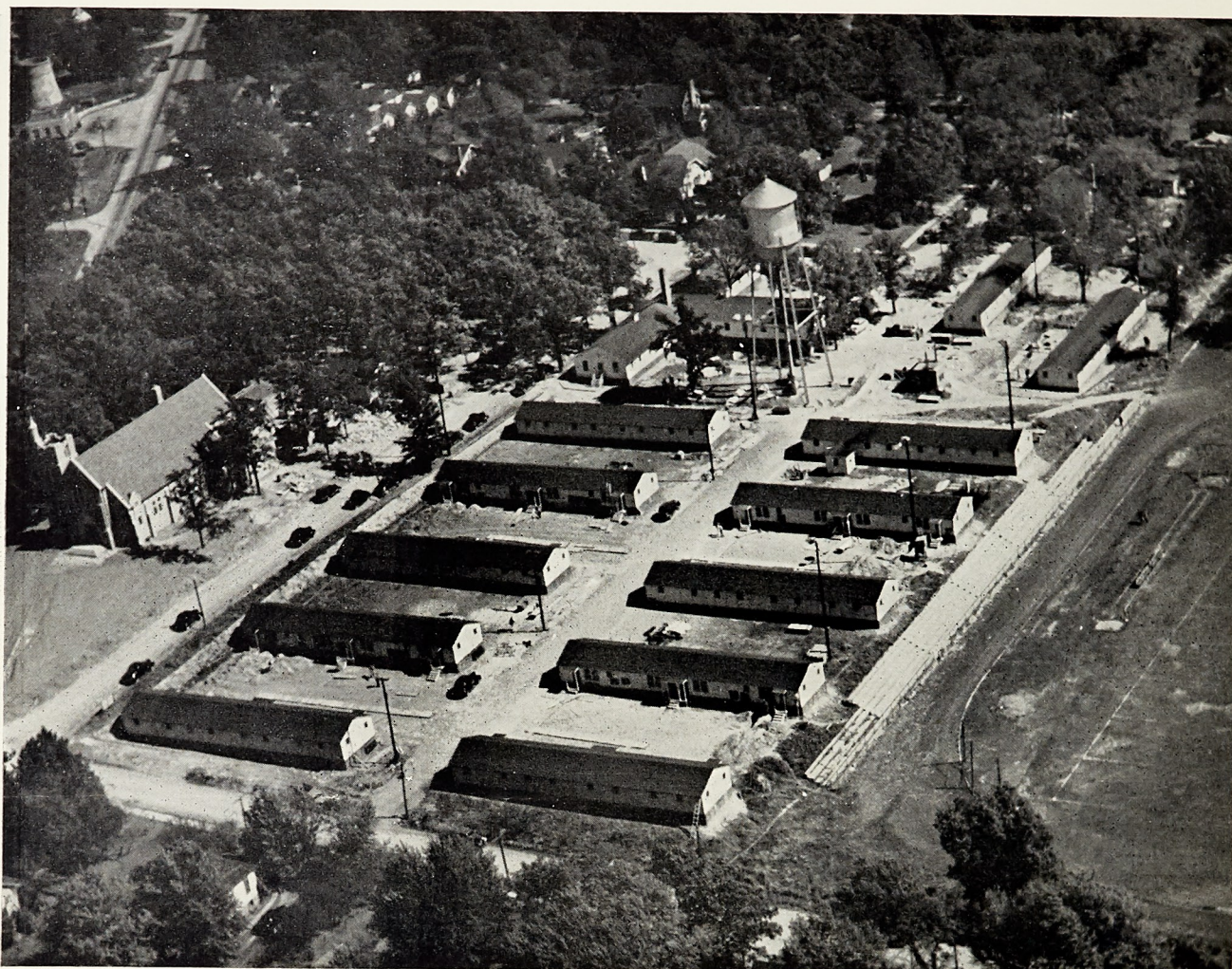
The football team representing the school is one of higher caliber than in many former years. A large majority of the players have had a good deal of experience before the war, and since their return from service, they have continued with their gridiron accomplishments. Manning the forward wall are old timers John Hazelett, Jim McGrath, Tony Leone, Neal Wood, Gale Fulghum, R. C. Gaureka, and Ralph Stallman while Bob Reichelt, Paul Fullop, Earl Hoehn, Gil Carafiol, Bill Gammon, and Frank Hequembourg form the backbone of the ball-carrying department. Other men new to MSM constitute a field of capable reserves which has been a strongpoint of the squad all season.

Under the splendid supervision of Head Coach Gale Bullman who is ably assisted by Dwight Hafeli and Chester Barnard, it is hoped that this fine 1946 football squad will reap a wonderful success.

#### Balance of 1946 Football Schedule

- \*Nov. 2, Saturday afternoon ..... Springfield here
  - Nov. 9, Saturday afternoon ..... Pittsburg Teachers, here
  - \*Nov. 16, Saturday afternoon ..... Kirksville, here
- \*Denotes conference game.

## HOUSING



Photo—Esquire Studio, Rolla

Aerial photograph shows 13 barracks and T-shaped dormitory building north of the football field. The area is bounded on the north by 16th Street and on the west by State Street. The T-shaped building, most permanent of the structures, is shown just behind the water tower. The new St. Patrick's Catholic Church is at the left of the housing area.

### Veterans' Emergency Housing Project on Way to Completion

By F. C. REHFELD '42, Project Engineer, FPHA

As the School of Mines settles down to its Fall semester's work with an unprecedented enrollment of 2118 students, the Veterans' Emergency Housing program on the local campus shifts its attention from the nearly completed dormitories to the fifty-six apartments also scheduled to be finished this fall.

Looking back at the hectic week of registration starting Sept. 18 when the Freshmen rolled in, and continuing as upper class students arrived and registered, we wonder what happened to the peace and quiet V-J Day was supposed to bring.

On the morning of Freshmen registration the 63-man T-shaped dormitory which had been turned over to the school of Sept. 10 was already filled with early arrivals. Four of the smaller 16-man dorms were accepted by the school on the 18th in a state of partial completion. This meant that the sleeping quarters were ready for use, but that the bathroom facilities were not complete as to hot water and shower facilities. Beds, mattresses, mattress covers, blankets, and pillows were all in transit and due to arrive the 18th. The mattresses arrived on the 18th, and one van load of beds,

the following morning; but the truck with the bedding broke down and didn't arrive until Monday, the remaining beds also rolling in that day.

Two more dormitories were turned over to the school on Sept. 21, and by doubling up four men to a room and using the gym to house the overflow, all the incoming students had a roof over their heads and a bed to sleep in as classes started Tuesday morning, Sept. 24. Another four dormitories accepted on Sept. 28 by the school brought the total of small dorms ready to ten and permitted the transfer of a majority of students housed in the gym over to the FPHA units.

On Oct. 8, the school received the last three buildings of the thirteen small dormitories, all thirteen by then virtually finished so far as the carpenter work was concerned and lacking only the heating units and completion of bathroom facilities to put an end to that part of the FPHA work on the campus.

Oct. 1 saw the start of work at the erection site for the seven two-story barracks being moved in from Vichy AAB and converted to two bedroom furnished apartments, fifty-six in all. The dismantling had been going on for some time at Vichy, and at least two of the barracks were completely down and ready for shipment. All possible effort is being made to get the seven buildings re-erected before cold

(Continued on next Page)

## MISCELLANEA

### Fall Meeting of Los Angeles Section

(Continued from Page 4)

at present in Paris, France. As previously reported in these columns, Mr. Lynton was granted a two-year leave of absence by the Standard Oil Company at the request of the French Government, who wanted Ted to head their Department of Exploitation of oil properties throughout the French empire, and the training of French petroleum engineers and technicians to carry on this work. Ted's letter gave an interesting account of his work and was enjoyed very much by everyone present.

A suggestion was made by Charles Dresbach that our National Alumni Officers should be asked to discuss with the School authorities, the possibility of a number of Scholarships to be provided by American Industry for foreign students. It appears that another very fine technical school has about twenty students under such scholarships at the present time, for the benefit of all concerned. Certainly our American Oil Companies which do a great deal of work in Venezuela and Colombia particularly, would be benefited by bringing some of the brightest young men from those countries to MSM for under-graduate work or post graduate training.

At the conclusion of the business portion of the meeting, Mr. Clarence Woods '04 showed a most interesting technicolor movie of his work, and of the places he visited during his years in South America.

It was announced that N. M. Lawrence '16 who has traveled and worked in almost every part of the globe since leaving Rolla, will speak at the next meeting on his experiences, with particular emphasis on the advantage of the American way of life.

Those present at the meeting were: Mr. and Mrs. Ed Godat '29; Mr. and Mrs. C. H. Schmitz '33; Mr. and Mrs. A. K. Cook '42; Mr. and Mrs. C. K. Forbes; Mr. and Mrs. O. R. Self '43; Mr. and Mrs. Barney Nuell '21; Mr. and Mrs. Lincoln Sanders '44; Mr. and Mrs. D. E. Huffman '21; Mr. and Mrs. Paul E. Coaske '12; Mr. and Mrs. N. M. Lawrence '16; Mr. and Mrs. John Young '17; Mrs. Eva Greene and son '11; Mr. Charles Dresbach '29; Mr. Amadee Peugeot '27; Mr. Herbert Soest '06; Mr. Joseph D. Cowen '46; Mr. Bill Donaldson '31; Mr. Clarence Woods '04; Mr. James V. Heddell '41.

### Veterans' Emergency Housing Project

(Continued from previous Page)

weather hampers the work.

The construction of Veterans' Housing here on the campus has been delayed time and again by the material and labor shortages so prevalent all over the country. The school and community, however, have made substantial contributions to the progress of the work by their willingness to cooperate with Mr. Monroe, superintendent for H. B. Deal and Co. Inc., and with the FPFA.

Mr. E. P. Hendrix, superintendent of buildings and grounds, and Mr. Harry J. Fields, business manager, have been especially cooperative, with Dean Wilson, Noel Hubbard, registrar, and members of the faculty helping out whenever called on. The local excavating contractors — Thomas & Blinney—have, at all times, given the Veterans' Housing Project on the campus the number one priority on all of their equipment and time, without which we would be far behind our present stage of completion. And last but not least—the students themselves, who worked on the job during the four week period between semesters, aided the job no end at the period it needed aid the worst.

While it will not be possible to use the entire crew which worked on the dormitories (160 men at the peak of construction) in construction of the apartments, the work will be carried on at the very fastest pace possible that the 56 married veterans already designated for the units may bring their families to Rolla.

### Alumni Return for Homecoming—Class Reunions

(Continued from Page 10)

ing here from his home in New York and plans to spend the entire Homecoming week on and around the campus.

Following the example set by the Class of 1916, other "1" and "6" classes are planning reunions during the big weekend. George Nations, president of the Class of 1936, has sent announcements of a luncheon reunion of his class to be held Saturday, Nov. 9, at the Pennant Tavern. He extends his invitation to all those who claim membership to that class, but who might not have received letters from him as yet.

Prof. H. R. "Cap" Hanley is getting together the members of the Class of 1901, who, according to Cap, "remember when the dinosaurs roamed the campus."

The Rolla Office staff has been busy getting together the list of members of the Class of 1911 for Frank E. Townsend. Members of this class will receive announcements of the reunion—the time, and place—within the next week. Anyone who is planning to attend the reunion, but who has not received an announcement should write to Mr. Townsend, 728 Wyandotte avenue, Bartlesville, Okla.

Floyd P. Smith '41 is busy making arrangements for the first post-war gathering of his class. Members of this class should contact Mr. Smith at Box 333, Lamar, Mo.

M. E. Suhre, Prof. V. A. C. Gevecker and Bob McCaw are making arrangements for the reunion of the Class of 1931. Prof. D. R. Schooler has sent announcements of a meeting of the Class of 1926, and Frank B. Powell is contacting members of the Class of 1906. Watch for the announcement of these class reunions and plan to attend!

### History of MSM's 75 Years for Anniversary

A history commemorating the 75th Anniversary of the Missouri School of Mines and Metallurgy has been prepared by Prof. C. N. Roberts, Instructor of History, it was announced by the 75th Anniversary Committee.

The volume, containing approximately 140 pages, will highlight sections about athletics, St. Pat's celebrations, student organizations and a galaxy of pictures of the old campus, former students and faculty members.

Delving into files of school catalogs, Miners, Rollamos, minutes of faculty meetings and various other publications and records of students, faculty and administration, Prof. Roberts spent four months gleaning material for what he terms "a factual report of the progress of the school."

The history will be sold to alumni and friends of the school at cost plus postage. The manuscript now is in the hands of the printer and it is not certain that copies will be available for sale at the Homecoming-75th Anniversary celebration. However, every effort is being made by the 75th Anniversary Committee to have it ready at that time.

You can reserve your copy of the history by filling out the form below or by mailing a postcard to the Alumni Association, Box 559, Rolla, Mo.

Reserve . . . . . Copies of the  
New HISTORY OF MSM for Me.

Name \_\_\_\_\_

Address \_\_\_\_\_



## Faculty Members 1946-47 (Continued from Page 9)

(Date after title of position indicates date of appointment to MSM on faculty)

### Mathematics:

- V. E. Knittel, Instructor of Mathematics, 1946. B.S. in E.E. 1942, Missouri School of Mines.
- R. E. Lee, Instructor of Mathematics, 1946. B.S. 1942, Missouri Valley.
- Otis L. Loomis, Instructor of Mathematics, 1946. B.S. 1932, A.M. 1933, Missouri.
- J. M. Marr, Instructor of Mathematics, 1946. B.S. 1941 Central Missouri State Teachers College.
- Ray W. Oesch, Instructor of Mathematics, 1946. B. Ed. 1934, Illinois State Normal; M.A. 1939, Illinois.
- Sylvester J. Pagano, Instructor of Mathematics, 1946. B.S. in E.E. 1946, Missouri School of Mines.
- John Ridout, Instructor of Mathematics, 1946. B.D. 1922 Virginia Theological Seminary.
- E. K. Schuman, Instructor of Mathematics, 1946. LL.B. 1917 University of Missouri. B.S. in C.E. 1920, Missouri School of Mines.
- George Tracy, Instructor of Mathematics, 1946. B.S. in Mathematics, 1942 at Central Missouri State Teachers College.
- John L. Tucker, Instructor of Mathematics, 1946. A.B. 1940 William Jewell College; M.S. 1942, Louisiana State University.

### Humanities and Social Studies:

- S. H. Lloyd, Professor of Economics, 1921. A.B. 1918 DePauw; M.S. 1921, Missouri School of Mines.
- O. A. Henning, Professor of Modern Languages, 1920. A.B. 1913, A.M. 1915, Central Wesleyan.
- Joseph Wayne Barley, Professor Emeritus of English, 1912. A.B. 1897, A.M. 1905 William Jewell College; Ph.D. 1911, University of Pennsylvania.
- M. H. Cagg, Assistant Professor of English, 1927. B.S. 1917, A.B. 1920, Ohio University; M.A. 1921, Ohio State.
- Clayton C. Campbell, Asst. Professor of English, 1946. A.B. 1938 McKendree College, Illinois. 1946, M.S. Purdue.
- J. J. Jelinek, Assistant Professor of English, 1946. B.S. 1932, Columbia; A.M. 1933, Michigan; Ph.D. 1945, Columbia.
- Wm. P. Randel, Assistant Professor of English, 1945. B.S., 1932, Columbia; A.M., 1933, Michigan; Ph.D., 1945, Columbia.
- Carl Christy, Instructor of English, 1946. B.A. University of Colorado 1944.
- H. A. Crumpler, Instructor of English, 1946. Bachelor of Journalism, University of Missouri, 1941.
- P. B. Frazier, Instructor of English, 1946. A.B. in Ed. 1932, M.A. English 1939, University of Kentucky.
- Walter C. Furr, Jr., Instructor of English, 1946. B.S. in Ed. Delta State Teachers College, 1938.
- M. L. Garner, Instructor of Economics, 1946. B.S. in Commerce, June 1941 Indiana.
- Edw. L. Goff, Instructor of English, 1946. Ph.B. 1932, Shurtleff College, Alton, Illinois.
- Reid Jann, Instructor of English, 1946. B.A. 1932 Central College. M.A. 1933, Southern Methodist University.
- James A. Koch, Instructor of Economics, 1946. B.S. in Indus. Admin. University of Illinois, 1939.
- D. S. Lynch, Instructor of English, 1946. A.B. in Psych. 1942, William Jewell College.
- Wm. H. Patrick, Instructor of English, 1946. B.A. University of Colorado 1940. M.A. University of Illinois, 1941.
- Wm. R. Phillips, Instructor of English, 1946. B. Ed. 1939 Southern Illinois State Teachers College. M.A. 1942, University of Illinois.
- C. N. Roberts, Instructor of History, 1942. B.S. 1935, M.A. 1936, Missouri.
- John A. Steinmeyer, Instructor of English, 1946. Bachelor of Journalism, University of Missouri, 1934.
- Wm. J. Murphy, Instructor of English, 1946. Ph.B. University of Detroit, 1942. M.A. University of Kansas City, 1944.

### Engineering Drawing and Descriptive Geometry:

- C. H. Black, Associate Professor of Engineering Drawing and Descriptive Geometry, 1937. B.S. in Architecture, 1934, Kansas State; M.S. in City Planning, 1946, M.I.T.
- L. C. Christianson, Assistant Professor of Engineering Drawing and Descriptive Geometry, 1946. B.A. 1925, Westminster; M.A. 1928, Missouri.
- A. H. Mallon, Assistant Professor of Engineering Drawing and Descriptive Geometry, 1946. B.S. C.E. Worcester (Mass.) Polytechnic Institute in 1940.
- John C. Forbes, Instructor of Engineering Drawing, 1946. B.S. in Mechanical Engineering, 1944, Missouri School of Mines.

- J. G. Graves, Instructor of Engineering Drawing and Descriptive Geometry, 1946. B.S. in M.E. 1929, University of Missouri.
- John Wm. Hammann, Instructor of Engineering Drawing, 1946. B.S. in E.E. 1936 Purdue University.
- James F. Rushing, Instructor in Engineering Drawing and Descriptive Geometry, 1946. B.S. in Civil, 1940, Missouri School of Mines.
- Homer Thompson, Instructor of Engineering Drawing and Descriptive Geometry, 1946. B.S. in Chemical Engineering, Missouri School of Mines 1932.

### Mechanics:

- R. Z. Williams, Professor of Mechanics, 1931. B.S. in Metallurgy 1931, B.S. in C.E. 1937, Missouri School of Mines; M.S. 1936, Wisconsin.
- N. Costakos, Instructor of Mechanics, 1941. B. Ch. E. 1939 University of Minnesota. M.S. 1941 in Ch. E. Minnesota Graduate School.
- R. F. Davidson, Instructor of Mechanics, 1945. B.S. 1941, Missouri School of Mines.
- Ralph Davis Jr., Instructor of Mechanics, 1946. B.S. 1946, M.E. University of Minnesota.
- A. D. Topping, Instructor of Mechanics, 1941. B.S.C.E. 1940 Purdue, B.S. 1939 Purdue.

### Physics:

- L. E. Woodman, Professor of Physics, 1919. A.B. 1899, A.M. 1902, Dartmouth; Ph.D. 1910, Columbia.
- Z. V. Harvalik, Associate Professor of Physics, 1946. B.A. 1926 State R.G. College Prague; M.S. 1931, A.M. 1934, Sc.D. 1933, University of Prague, Czechoslovakia.
- W. J. Jensen, Associate Professor of Physics, 1924. A.B. 1920, Carleton College; A.M. 1922, Illinois.
- L. E. Leaver, Assistant Professor of Physics, 1942. B.S. in Ed. 1925, Warrensburg Teachers; A.M. 1929, Missouri.
- J. M. Burger, Instructor of Physics, 1946. A.B. 1939, University of Kansas; M.A. 1940, Kansas.
- C. Ray Holland, Instructor of Physics, 1946. B.S. in Education, 1943, Southeast Missouri State College.
- A. E. Schwaneke, Instructor of Physics, 1946. B.S. in Education, 1940, Central Missouri State Teachers College.

### Physical Education:

- Gale Bullman, Instructor in Physical Education, 1937. A.B. 1925, West Virginia Wesleyan; LL.B. 1929, Washington.
- Chester S. Bernard, Instructor in Physical Education, 1946. B.S. in Ed. 1920 Missouri State Teachers College; M.S. Phy. Ed. 1940.
- Dwight L. Hafeli, Instructor in Physical Education, 1942. B.S. 1937, Washington University.

### Military Science and Tactics:

- E. C. Richardson, Professor of Military Science and Tactics, 1944. B.S. in C.E. 1927, Nebraska.
- Everett C. Bloom, Instructor of Military Science and Tactics, 1946. B.S. 1940 Indiana State Teachers College, Pa.

### Registrar:

- Noel Hubbard, Registrar, 1923.

### Business Manager:

- Harry J. Fields, Business Manager, 1946. B.S. Business Administration 1942, University of Missouri.

### Library:

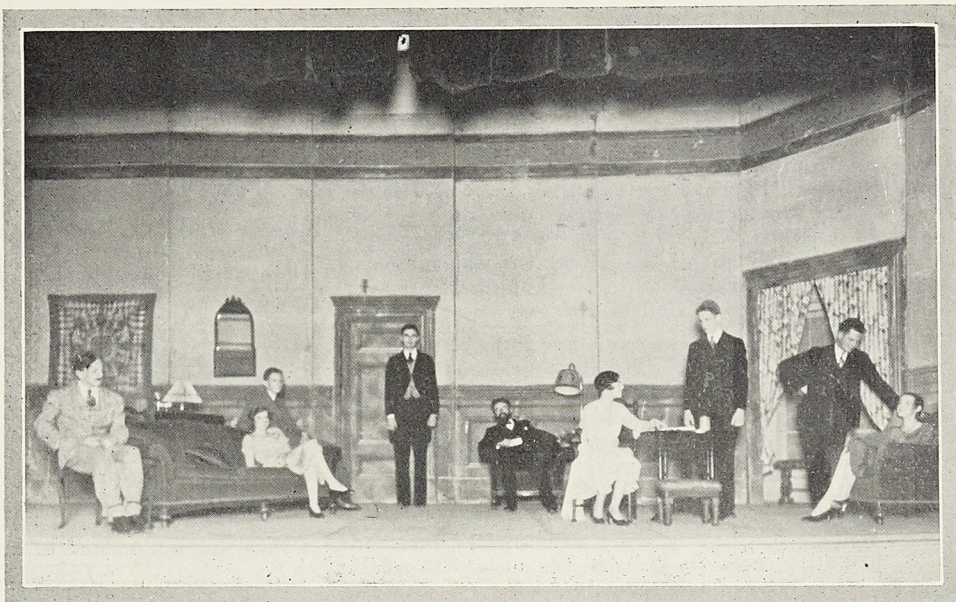
- Earl J. Randolph, Librarian, 1946. B.S. Chemistry, 1937, Colorado A. & M. A.B. Library Science 1939, University of Michigan; A.M. Library Science, 1945 University of Michigan.
- Frank C. Winston, Reference and Circulation Assistant, 1945. A.B. 1927 Hampden-Sydney College.
- Julia E. Brittain, Reference and Circulation Assistant, 1944. A.B. 1921, A.M. 1922 Michigan; B.S. in Lib. Sci. 1927, Columbia.

## MISCELLANEA

PICTURE TAKEN  
FROM OLD  
ROLLAMO FILES.

CAN YOU IDENTIFY  
PLAY AND CAST  
MEMBERS ?

WHAT  
WAS THE  
YEAR  
OF  
THIS  
PRODUCTION ?



### Wanted—Your Presence at the Homecoming-75th Anniversary!

There are still a few rooms and cabins available in and around Rolla for the Homecoming-75th Anniversary celebration week, but the supply is dwindling as the date for the affair is approaching.

In the July-August issue of the *Alumnus* a form to be returned to the Rolla Office was printed on page 18. Of the 1000 members receiving the magazine, only about 20 have returned the forms. Check your magazine to see if you have returned yours. If the magazine is lost, send a letter or postcard to the Rolla Office, Box 559, Rolla, Mo., stating whether or not you plan to attend the Homecoming-75th Anniversary.

The Rolla Office staff has been able to arrange for accommodations as they have been requested thus far. There are still a number of cabins on the "available" list. Get a party together and let the Alumni Association make your reservations for the big week-end. This is going to be the biggest and best Homecoming ever staged at MSM. Don't miss it! And don't be left out in the cold when you get here. **MAKE YOUR ROOM RESERVATION NOW!** Write to the Alumni Association, Box 559, Rolla, Mo.

### Additional Alumni Personals

These news items were received too late to include them in the Alumni Personals on pages 19 and 20.

John A. **Reed** Jr. '43 is employed by the Caterpillar Tractor Company in Peoria, Ill. John was discharged from the Army Corps of Engineers in June, 1946 with the rank of Captain and served on Saipan for 10 months during the war. He recently started the College Graduate Training course with the Caterpillar Tractor Company. His home address is 505 Gilbert, Peoria, Ill.

A. T. **Sindel** Jr. '42 has accepted a position with the Standard Oil Co. of Texas. His address: Box 1249, Houston, Tex.

Edward S. **Isenmann** '44 was on the campus Oct. 1. Ed has just been honorably discharged from military service and is visiting at his home in Warrenton, Mo.

Jean L. **Ronat** '44 has accepted a position with Westinghouse Corp. in Pittsburgh. His home address is 513 Holmes street, Pittsburgh, Pa.

Arthur H. **Kemp** '29 is Assistant Construction Engineer for the Gypsy Division of the Gulf Oil Corp. His home address is 931 South Quebeck, Tulsa, Okla.

### Certificate of Distinction Awarded by War Department to MSM

Dean Curtis L. Wilson has been notified by Secretary of War Robert P. Patterson that the Missouri School of Mines and Metallurgy had been awarded a certificate of distinction by the War Department for the training of soldiers in the Army Specialized Training Program during World War II. The A.S.T.P. was started at the School of Mines in August of 1943 when a total of 400 soldiers were assigned to the campus. This was continued through the year into March 1944 when the entire A.S.T.P. was abandoned. A total of 556 individual soldiers were trained during this time.

### About Town and Campus

(Continued from Page 5)

Shop," is moving from the Dugout. He will open up shop at 10th and Pine as soon as his new quarters are finished. At present the building is still under construction, but Wally hopes to be established by Homecoming.

The fraternities are planning for a gala Homecoming week-end. The Sigma Nu's will entertain grads in their old house which has been rebuilt after the drastic fire on Thanksgiving Eve of 1945. The Kappa Alpha's recently opened a new house at the corner of 12th and Pine, and much painting and repairing has been going on around there.

Sigma Pi's will be on hand ready to show off their new house at 206 East 12th street. The Triangles, Kappa Sigs, PiKA's and Lambda Chi's will receive old members at their old stands.

Rooms are going to be at a premium when the gang moves into town. The Rolla Office of the Alumni Association has offered 1st services as a go-between to obtain accommodations and so far have been able to make reservations for all who have requested them.

However, there are still a great number of men who have not sent in the form from last month's *Alumnus*. Let's get these requests in as soon as possible so you will be assured of a place to stay. If you do not have the form from the last *Alumnus* a card or letter will suffice. Just send it to the *Alumnus*, Box 559 at Rolla and let us know what kind of accommodations you would prefer.

John R. **Long** '38 was on the campus on Sept. 26. Jack is Superintendent of the Cadet Mining Co. at Cadet, Mo.

Lt. Com. Fred M. **Mueller** '38 is now with the Public Works Dept., U.S. Naval Air Station, St. Louis, Mo.

Oct 1946

## ALUMNI PERSONALS

### Births

Prof. and Mrs. Frederick W. Thompson announced the arrival of a son, Roger Geoffrey, who was born Aug. 7. Thompson is a member of the class of '38 and is an instructor at Virginia Polytechnic Institute at Blacksburg, Va.

Mr. and Mrs. Herman Bottcher announced the birth of a son, Paul, born June 5. This is their second child, the first being a girl, Carol, who is three years old. Bottcher, who graduated in '41, has been promoted recently to foreman of the Casting department of the Aluminum Company's Die Casting Plant at Garwood, N.J. His home address is 107 Jackson avenue, North Plainfield, N.J.

Mr. and Mrs. E. A. Rassinier announced the birth of a son, Craig Malcolm, on Sept. 25. Mr. Rassinier graduated from MSM in 1942 and is employed in the Production Department of the Phillips Petroleum Co. at Bartlesville, Okla. Mrs. Rassinier is the former Berniece Little. They live at 2070 Johnstone avenue, Bartlesville, Okla.

### Deaths

Mrs. William R. Chedsey, wife of the former Director of MSM, died at her home in Urbana, Ill., during the week of Sept. 22, it was learned here recently.

Dr. Chedsey was director of the school from 1937 to 1941, and during their stay in Rolla Mrs. Chedsey became well known to students and alumni. Dr. Chedsey is Professor of Mining at the University of Illinois at Urbana.

Vincent P. Ryder Jr., who completed his freshman year

at the School of Mines in May, 1943, has been declared dead as a result of enemy action. Last June Vincent was reported missing in action, and since no trace has been found of the plane in which he was bombardier, the government has declared him deceased. His mother lives at 4954 Forest avenue, Kansas City, Mo.

Mrs. Lawrence J. Zoller died Sept. 19 at her home, 2619 Peoria avenue, Tulsa, Okla., it was learned here recently. Surviving is her husband, a member of the Class of 1918; two sons, Jacques W. Zoller '42 and Victor Zoller '43 and a brother-in-law, Henry E. Zoller '23.

### Weddings

The wedding of Miss Louise Becker, daughter of Dr. and Mrs. Wesley Charles Becker of Lincoln, Neb., and William Jarrard Goodwin, son of Mr. and Mrs. Homer L. Goodwin, 322 Emmett avenue, Ferguson, Mo., took place Aug. 2 at the Westminster Presbyterian Church in Lincoln. Arthur L. Peterson '41 was a member of the wedding party. William has returned to the School of Mines to complete his last semester. He was a member of the class of '41 before his work was interrupted when he entered the armed forces.

Miss Josephine E. Schertz of Pekin, Ill., became the bride of Charles E. Hall on June 1 at the Cumberland Presbyterian Church, Russellville, Ark. Mr. Hall was graduated from the School of Mines in '40. He served with the Army during the war and was discharged in June, 1945. He is now a member of the Paxon-Hall Co., Box 453, Russellville, Ark. His home address is 300 S. Arkansas avenue, Russellville.

1907

Walter I. Phillips writes that he is living at 1254 West 6th St., Los Angeles, Cal. He gives his permanent address as 203 North Washington street, Wheaton, Ill. 1909

John W. Beard stopped at Rolla on his way back to Texas after an extensive tour through the East. His home address is 4419 Cambridge, El Paso, Tex. 1911

Raymond A. Bingham informed the Association that his address is 219 North 46th street, Belleville, Ill. 1912

Recently elected to vice presidency of the Dome Mines, Ltd., South Porcupine, Ont., Robert E. Dye is assistant general manager of the company. 1915

Daniel W. Blaylock came to Rolla in August to enroll his son in the 1947 Freshman class. The Blaylocks live at 1055 Sylvan avenue, Lakewood, Ohio. 1916

Clyde W. Bower ex-'16 is Works Manager of the Chemical and Sulfuric Acid Plant of E. I. DuPont de Nemours & Co. at Lockland, Ohio. His 27 years with DuPont include technical and managerial positions at one of their coal mines and at their Indiana Zinc Rolling Mill. His home address is 820 Woodbine avenue, Glendale, Ohio. James L. Head has contributed an article, "The Early History of Chuquicamata" to the May-June issue of the Chilean Gazette published by the Chilean Embassy in Washington, D.C.

Hugo E. Koch sends his home address as 608 Mound street, Hannibal, Mo. J. J. Krebs ex-'16 has his own engineering office in the Barrons Bldg., New Orleans, La. He lives at 8234 Palmetto, New Orleans, La. James D. Turner ex-'16 is living at 1129 South National avenue, Springfield, Mo. 1917

Clarence E. Muehlberg is living at 17 Yale terrace, Montclair, N.J. 1921

Virgil L. Whitworth writes from South America. His address is Ciixa Postal 470, Salvador, Bahia, Brazil. 1922

Kurt H. DeCousser is employed in Lansing, Mich., with the White Star Division of the Soco-Vacuum Oil Co., Inc.

David J. Flesh ex-'22 lives in Jefferson, Tex., and is with the Jefferson Oil and Gasoline Co., there.

An unofficial reunion of the Class of '22 is being planned by E. G. "Ted" Machin, who stopped in the Alumni office recently to enlist aid in locating members of the class. Ted was discharged from military service with the rank of Lieutenant Colonel and is Secretary-General Manager of the Washington County Lumber Builders Supply Co., Nashville, Ill.

George L. Richert's address has been changed to Cia Mra., Alarcon, Apartado No. 19, Taxco, Gro., Mexico.

Ernest H. Ruebel operates an electric store at Alhambra, Cal. His residence is at 812 Lindaraxa Park South, Alhambra, Cal. 1923

John J. Haberthier lives at 345 East Lemon street, Bartow, Fla. 1924

James E. Jett sends his address as 408 Sue, Houston, Tex. 1925

Milton Harden ex-'25, for many years connected with the Topographic Branch of the U. S. Geological Survey in Rolla, has resigned his position here to accept a job with the Army Map Service under the supervision of Daniel Kennedy, of the same class, in Washington, D.C. 1928

Recent visitors in Rolla were William L. Metcalf and his family. Bill is an instructor in the Vocational department of the Community High School at Granite City, Ill. He lives at 2804 Iowa avenue, Granite City, Ill.

Gerald A. Roberts is with the Lion Oil Co., Chemical Division, and lives at 1121 North Smith avenue, El Dorado, Ark. He adds that mail sent to him at Staunton, Ill., will be forwarded. 1929

LeRoy Van Sciver visited with friends and relatives in Rolla during August. He is employed by the Westinghouse Electric Co., and lives at 312 Glen Ridge road, West Gate Hills, Havertown, Pa. 1930

Recently discharged from service with the Seabees, Lewis H. King is living at his home in Cassville, Mo.

Edgar C. Long has been released from service and is Assistant Production Manager, Baroid Sales Division of the National Lead Co., Los Angeles, Cal. He recently became a member of the AIME. 1932

O. M. Andres is Field Engineer for the Chi-

cago District of the Portland Cement Association, 33 West Grand avenue, Chicago, Ill. His home address is Smithton road, Belleville, Ill.

J. K. Richardson is Manager of the Utah Metal Mine Operators, Kearns Bldg., Salt Lake City, Utah. 1933

William A. Brown is living at 1113 1/2 D street, Marysville, Cal.

Lt. Thomas V. Cummins has been released from the Army after 30 months in the Pacific theater. Tom has returned to his position with the U.S. Geological Survey in Rolla.

B. J. Gross is Eastern District Manager of the Key Company, manufacturers of oil refinery and power plant equipment, at 420 Lexington Ave., New York 17, N.Y.

Harry H. Hedges and his wife, the former Claudia Smith, visited in Rolla during August. Harry is employed by the U.S. Engineers and lives at 3160 Choctou street, Memphis, Tenn.

An instructor at the AAF Technical School, Chanute Field, Ill., Lowell A. Hibbits sends his address as 6 Willows avenue, Rantoul, Ill.

John D. Martin Jr., employed by the Geophysical Research Corp., lives at 2425 North Main street, Tulsa, Okla.

Charles C. Rodd, staff engineer with Gulf Oil Corp., Tulsa, Okla., has changed his AIME status from Junior Member to Member. 1935

George W. Dickinson ex-'35, resident engineer at the Denver, Colo., Ordnance Plant, has been advanced from Junior Member to Member of the AIME. 1936

Theodore A. Roes Jr., whose business address with the Midwest Fence Construction Co. has been changed to 1252 South Vandeventer, St. Louis, Mo., lives at 1001 Bernice, Kirkwood, Mo. 1937

Glenn N. Hackmann is Hydraulic Engineer with the U.S. Geological Survey, Water Resources Division. He lives at 703 East 7th St., Rolla, Mo.

J. J. Beinlich was a campus visitor in August. He is employed by the Carnegie Illinois Steel Co., and lives at 425 Farnsworth avenue, Clairton, Pa.

G. W. Schaumburg has been transferred by the U.S. Steel Corporation to the Geneva Steel Co., in Utah. He lives at 264 South Third, East,

Oct 1946

## ALUMNI PERSONALS

American Fork, Utah.

Kenneth F. Sheckler is employed by the Badger Firebrick and Supply Co., 1222 West Clybourn, Milwaukee, Wis. Mail sent to his home address, 2613 Seneca street, St. Joseph, Mo., will be forwarded to him.

Fred Vahle is on terminal leave before his separation from the Army. Fred attained the rank of Lieutenant Colonel.

1938

Alvin W. Knoerr, associate editor of Engineering and Mines Journal of New York City, has stepped up from Junior Member to Member of the AIME. His home address is 660 Locust street, Mount Vernon, N.Y.

Ralph L. Scarborough was on the campus Aug. 22. He is employed by Holabird and Root Consulting Engineers, 333 North Michigan Ave., Chicago, Ill. He lives at 59th and Grant street, Hinsdale, Ill.

After receiving his Master's degree from the University of Pittsburgh last June, Robert C. Seibel has been appointed Assistant Professor of Electrical Engineering at Montana State College, Bozeman, Mont.

Hueston M. Smith sent note of change of his address from Webster Groves, Mo., to 1006 West Kirkham avenue, Glendale, Mo.

1939

Lewis J. Gleason writes the Association that he has been transferred by the Standard Oil Co. of California to the California Asphalt Corp. in Portland, Ore. He is interested in contacting other Miners in the Portland area and gives his address as Box 3858, c/o California Asphalt Corp., Portland 8, Ore.

1940

Still a member of the Armed Forces, Richard Followill is a Flight Instructor with the Army Artillery Liaison, Army Ground Forces Air Training School, 1814 Euclid avenue, Lawton, Okla.

Robert Kieth ex-'40 is Assistant Metallurgist at the Cleveland, Ohio plant of the Aluminum Company of America. He has been elected a Junior Member of the AIME.

John W. Metcalf has been released from military service and is living at 405 Ripley street, Columbia, Mo.

Ivan M. Niedling is doing sales engineering work in residual fuel oils for the Petrol Corp., 1130 North Charles street, Baltimore, Md. His home address is 814 Park avenue, Apt. 9, Baltimore, Md.

Gene Olcott is Materials Engineer for the Bureau of Aeronautics, Navy Building, 1 W 66, Washington 25, D.C.

E. Clarke Romine lives at 1218 South Ash, Casper, Wyo.

Alex Rubin is living at 817 Westgate avenue, University City 5, Mo.

Robert H. Smith was a campus visitor Aug. 23. He is still a member of the Air Corps and is being transferred at Scott Field, Belleville, Ill. His home address is 202 East 12th street, Rolla, Mo.

Jack E. Tiede is with the United States Rubber Co. in St. Louis. He lives at 5259a Theodosia avenue, St. Louis, Mo.

1941

Among those graduated at the Summer Convocation was Arthur W. Brune who received his Master's degree. Arthur has been employed by the St. Joseph Lead Co. and lives at 207 East School street, Bonne Terre, Mo.

Charles F. Clarkson visited the campus in August. He is a Junior Engineer with the Schlumberger Well Surveying Corp. at Houston, Tex.

George R. Couch has moved from Luckey, Ohio to 5887a Etzel avenue, St. Louis, Mo.

Lt. (jg) Frank B. Rogers is on terminal leave from military service. He is living at 18 North 22nd street, East Orange, N.J. He is employed by the Westinghouse Mfg. Co., Bloomfield, N.J.

During terminal leave from the Army, Harvey C. Stevens visited the campus. He has been employed by the Shell Pipe Line Corp., Houston, Texas.

Recently discharged from military service, Frank C. Steimke Jr. is living at 9437 Bataan, Overland, Mo.

Joseph G. Wink is Assistant Engineer in the

Process Design Section, Bechtel Bros.-McCone, 3780 Wilshire Blvd., Los Angeles, Cal. He lives at 11818 Magnolia Blvd., North Hollywood, Cal.

1942

George Axmacher is employed by the Key Co. of East St. Louis, Ill., in their New York office. His address is 485 Gramatan avenue, Mount Vernon, N.Y.

Niles K. Brill is working for the Humble Oil and Refining Co. and lives at 221 Virginia, Baytown, Tex. He writes that Emilé Dahlen is employed by the Tennessee Coal and Iron Co. in Birmingham, Ala., and that Herbert Pagel, also employed by the Tennessee Coal and Iron Co., can be reached at his home address, 114 West Main street, Watertown, Wis.

George P. Dahm, employed by the Metals Disintegrating Co., is living at 121 West 7th street, Roselle, N.J.

Robert M. Dunham is at the University of Texas and lives at 310 LeGrand avenue, Austin 22, Tex.

George D. Grayer is with Black, Sivalls and Bryson of Kansas City, Mo. His home address is 616 West Maple street, Independence, Mo.

Charles Hillery works for the Correal Construction Co., which is engaged in coal stripping. He lives at 203 West Broad St., Tamaqua, Pa.

Thomas A. Jones, who is with the Rolla Station of the U.S. Bureau of Mines has been elected to a Junior Membership in AIME.

Recently discharged from military service, Orville D. Penrose is living at Winchester, Tex.

S. F. Rimmel sends his present address as Box 1386, Phillips, Tex.

Kenneth Roffman is with the Westerlin and Campbell Co., 1113 West Cornelia, Chicago 13, Illinois.

Mail can be sent to Harold Rueff ex-'42 at his home address, 5863 Maple avenue, St. Louis, Mo. Harold was recently released from military service and has enrolled for the fall term at the School of Mines.

Ens. Robert L. Stowell who has been discharged from service with the Seabees, visited New York City during August. He was enroute to his home at Madison, N.Y. After a brief vacation he will return to his work with the Alcoa Mining Co. Prior to his entrance into the service he was with Alcoa in Arkansas and Suriname.

Gene M. Veale has been discharged from service with the Army and is working in Tulsa. He receives mail at P.O. Box 637, Tulsa, Okla.

1943

R. Kent Comann is Lime Production Manager at the U.S. Gypsum Co., 300 West Adams street, Chicago 6, Ill.

D. J. Coolidge sends note of temporary change of address from Northwestern University in Evanston, Ill., to 215 Bailey road, Crystal City, Missouri.

Robert L. Ehrlich has been employed by the Colgate-Palmolive-Peet Co., Kansas City, Kan. He lives at 6418 Benton, Kansas City, Mo.

Now employed by the Standard Oil Co. of Indiana in their Sales Department office in St. Louis, Fred G. Fleschner is living at 7059 Winona avenue, St. Louis, Mo.

Recently returned from overseas duty, John W. Griffiths visited the campus during August. He lives at 450 Fairview avenue, Webster Groves, Mo.

Robert E. Hartleb informs us that he has moved to 1219 Eighty-second street, North Bergen, N.J.

Having served 23 months in Okinawa, China and Japan, James C. Johnson has been separated from the Navy as a Lt. (jg). He is spending his terminal leave at his home in Licking, Mo., after which he plans to return to his former position with Monsanto Chemical Co.

Raymond O. Kasten visited the campus on Sept. 1. He is employed as Research Engineer with the Union Wire Rope Corp., and lives at 43rd and Moats drive, Kansas City, Mo.

Lt. (jg) Howard B. Liley is spending his terminal leave at his home 1512 Eckert place, St. Louis, Mo.

A former Marine Corps flier, Kenneth E. Meyer is now with the Republic Aircraft Corp at Farmingdale, Long Island, N.Y. He and his wife, a former WAVE, are living at 9 Maple

place, Huntington, L.I., N.Y.

Jack L. Shafer has been employed by the Bethlehem Supply Co., and lives at 1270 East 25th street, Tulsa, Okla.

Eugene M. Shaver is working with the Universal Atlas Cement Co., Hannibal, Mo.

Gabriel Skitek has been named instructor in the Electrical Engineering department at MSM. Lt. (jg) Henry N. Sloan has been with the Merchant Marines employed by the Keystone Shipping Co., Philadelphia, Pa. He is returning to his home at 409 Capitol street, Jefferson City, Mo., for a brief vacation before entering MSM for graduate work.

Donald J. Studebaker is gravity meter operator for the Carter Oil Co., Lima, Peru. He was discharged from military service in October, 1945. His home address is Humansville, Mo.

Donald M. West visited the campus on Aug. 22. He was accompanied by his wife, the former Amy Gail Goodhue '45. The Wests live at 379 South street, Pittsfield, Mass. Donald has been discharged from military service.

1944

Donald C. Brand was a campus visitor Aug. 29. He is employed by the Monsanto Chemical Co., and lives at 5315a Gladstone place, St. Louis, Mo.

L. F. Bridge is Plant Engineer at the Bemis Bag Co. He lives at 650 Pearl avenue, Kirkwood, Mo.

Having received his discharge from military service, Louis Hartcorn is employed by the General Electric Corp., in Washington. He still receives mail through his home address, 32 Main street, Chatham, N.Y.

John O. Herrmann ex-'44 was discharged from the Army as a First Lieutenant. He spent 23 months in the European theater and wears two battle stars. He has enrolled at MSM this fall to complete his work for a degree in Civil Engineering.

Another ex-student who has returned from military service to complete his work at MSM is William Hellwege.

Robert W. Jameson is working with a seismograph crew of the Shell Oil Co. He lives at Chickasha, Okla.

R. W. Klorer has been released from active duty with the Army and is living at 1421 Arlington avenue, St. Louis, Mo.

Lt. John L. Krall was on the campus Sept. 6. He has been released from the Signal Corps after 19 months in the Pacific theater. His home address is Route 2, Liberty, Mo.

Warren L. Larson was discharged Aug. 24 from the Navy with the rank of Lt. (jg). He visited the campus Sept. 11 before going to MIT where he will work toward a Master's degree in Metallurgy. His home address is 4206 Terrace street, Kansas City, Mo.

Calvin E. Moeller is living at 827 Fairmont road, Burbank, Cal.

Sanford L. Simons, lately with the Atomic Bomb Project, is now in consulting engineering work with the Allrege and Simons Laboratory, 2048 Champa street, Denver, Colo.

John W. Sjoberg enrolled at MSM this fall to work toward a Master's degree. His home address is 929 East Elm street, Springfield, Mo.

1945

Francis G. Gottsberger visited the campus in August. He is working for the American Steel Foundries in East St. Louis, Ill., and lives at 715 Atlanta, Webster Groves, Mo.

Gene K. McDowell, research engineer at the Battelle Memorial Institute at Columbus, Ohio, is now Junior Member of the AIME.

Lt. Robert M. Rock, ex-'45 has returned to MSM to complete his work toward a Bachelor's degree, after being discharged from military service. His home address is 2009 De Soto avenue, St. Louis, Mo.

Robert Seigle was visiting in Rolla on Sept. 13. He is with the Press Wireless Mfg. Corp., New York, N.Y. His home address is 85 Cutter Mill road, Great Neck, N.Y.

1946

Fred H. Bunge is employed by Armour and Co., 1355 West 35th street, Chicago, Ill.

Arthur Meenen is living at 612 Holly Hills boulevard, St. Louis, Mo.

ROLLA  
WELCOMES YOU  
M · S · M  
ALUMNI



A SALUTE  
TO  
ALL MINERS  
ON THE  
75th ANNIVERSARY  
OF MSM

1946