



12 Nov 1920

## The Missouri Miner, November 12, 1920

Follow this and additional works at: [https://scholarsmine.mst.edu/missouri\\_miner](https://scholarsmine.mst.edu/missouri_miner)

These newspapers reflect the attitudes, perspectives, and beliefs of different times. Neither the library nor the university endorses the views expressed in these collections, some of which contain images and language which may be offensive to some readers.

---

### Recommended Citation

"The Missouri Miner, November 12, 1920" (1920). *The Missouri Miner Newspaper*. 221.  
[https://scholarsmine.mst.edu/missouri\\_miner/221](https://scholarsmine.mst.edu/missouri_miner/221)

This Newspaper is brought to you for free and open access by Scholars' Mine. It has been accepted for inclusion in The Missouri Miner Newspaper by an authorized administrator of Scholars' Mine. This work is protected by U. S. Copyright Law. Unauthorized use including reproduction for redistribution requires the permission of the copyright holder. For more information, please contact [scholarsmine@mst.edu](mailto:scholarsmine@mst.edu).



Prof J. B. Butler.

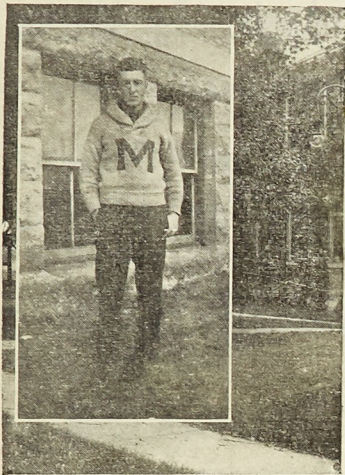
# THE MISSOURI MINER.

Missouri School of Mines and Metallurgy, Rolla, Missouri.

Vol. 7, No. 11.

Friday, November 12, 1920.

Price, 8 Cents.



EDWIN JOSEPH BOHN.

"Eddie" Bohn made the supreme sacrifice last Monday evening, November 8th, in Mulanphy Hospital in St. Louis. He died as the result of injuries sustained in the football game with Warrensburg Normal last Saturday afternoon. His death was a shock to the entire student body and faculty, as no one realized the seriousness of the injury to his spine.

It was felt by every one that Eddie laid his life on the altar of school spirit, and that the spirit he showed in playing when he felt that he should not, ought not be allowed to fade from the memory of the student body. Every club, fraternity and organization and the faculty and student body as a whole sent representatives and beautiful floral offerings to his funeral services, which were held Thursday morning in the New Catholic Cathedral in St. Louis.

Edwin Joseph Bohn was born in St. Louis, Missouri, the twenty-sixth day of July, 1898. He entered St. Louis University in the preparatory department, in

Whereas, God, the creator of the Universe, has seen fit to call to his reward our friend,

## EDWIN JOSEPH BOHN.

Therefore, be it resolved, that the Students of the Missouri School of Mines hereby express their genuine appreciation of his services to the institution, to his God and to his church; and

Be it further resolved, that we extend to his bereaved and beloved family our most heartfelt sympathy in this hour of grief; and

Be it further resolved, that these resolutions be spread upon the minutes of the Student Council, a copy be sent to the bereaved family and to the press, and an article be put in the Missouri Miner, the official publication of the Missouri School of Mines, so that all may know of our love and appreciation of so real and true a man.

1911, remaining at that institution until the end of his freshman year in college. He entered the Missouri School of Mines September 10, 1917, as a sophomore, and had been here since that time. At the time of his death he was a senior, and would have completed the necessary work for the degree of Bachelor of Science in December of this year.

He was entered upon the records of the School of Mines as Edwin Joseph Bohn; but to every student and professor in the college he was "Eddie." "Eddie's" interest in athletics began at an early age, and while at the School of Mines he had made letters in basketball, football and track. He was captain of the track and basketball teams during 1920, and under his leadership the men who were with him learned to appreciate his character and the qualities of gentleness and courage which marked him for what he was—a Man.

While at the School of Mines he was a member of the Kappa

Alpha Fraternity, the Quo Vadis Club, and the Mercier Club, and was a charter member of the Civil Engineers' Society. In the various organizations of which he was a member he was always relied upon, and the members always knew that he was worthy of any trust that might be imposed upon him.

"Eddie" Bohn was known all over the state in athletic circles as one of the best football and track men in the Missouri Conference, and had the reputation of being one of the cleanest players and truest sportsmen ever known. His smile and words of encouragement never





failed to inspire men to do their best.

His death was an accident. In the third period of the game "Eddie" caught a punt, and was running it down the field, when one of the Warrensburg players made a tackle, which failed to stop him, but knocked him off his stride. Another Warrensburg tackler then collided with him and his head hit the thigh of his opponent, causing him to fall. He was assisted from the field, but insisted that he was not seriously hurt. After he grew worse an examination showed that his spine had been fractured and he was taken to St. Louis.

His gentle, intimate interest in all that concerned his friends, and the greatness of his heart, made spontaneous tributes come to him from every side during his life.

He was our friend because he was loyal to us. We were his friends because he was one of us. He was known and loved by every student and instructor in the school—and the spirit of "Eddie" Bohn can never die.



#### Appreciation from Dr. McRae.

Eddie Bohn's quiet, unobtrusive and gentlemanly bearing won the respect of every one with whom he came in contact. His generous disposition, likeable qualities and loyalty to friendships endeared him to his fellows to an unusual degree. He could always be depended upon to give and do his best. What more need be said? M. S.

M. with deep sorrow mourns his untimely death.

A. L. McRAE.

#### FOOTBALL SCHEDULE TO BE COMPLETED.

In giving his life that we might win last Saturday's contest, and thus be one step nearer the conference championship "Eddie" Bohn paid the supreme sacrifice. As a fitting tribute to his memory, the members of the football squad voted to play the remaining games on the schedule. It is fitting that the team should show this spirit, because to quit now, when one more would give us the right to claim the coveted championship would make "Eddie's" death in vain. We know that it would have been Eddie's wish that the Miners continue in the scrap.

As a result of the action of the football squad Drury will play here tomorrow, and the final game of the season will be played at Tulsa on Thanksgiving day.

The Drury Panthers, of Springfield, arrived in Rolla this evening for our final conference battle tomorrow. Coach Pritchard of Drury believes he will have the strongest line-up of the season, and is not in the least discouraged, even in the face of the overwhelming dope-sheet percentage against them. The Panthers have had two weeks to prepare for the game, and intend to put up a battle royal.

#### ARMISTICE DAY SERVICES.

Armistice Day memorial services were held at Parker Hall Thursday at 9:30, under the auspices of the Veterans of Foreign Wars and American Legion local posts.

At the close of the services all were invited to march to the Catholic Church, where memorial services were held for Edwin Joseph Bohn, at which Father Lynch officiated.

# APPLES

NOW IS THE TIME TO  
GET YOUR

Apples For Winter

The season will soon be  
over

CALL AT ORCHARD  
NEOSHO NUR'S CO ORCHARD  
FORMERLY STARK ORCHARD

THE EFFECT OF TIME ON

THE

HONK-E-TONK

Peanuts and Popcorn

Now Ready For You as You  
Enter The Show

HARRY BRITTON

## SANDS GROCERY

ONLY THE BEST GROCERIES  
HANDLED

And

Only Sold at the Best Prices

CLUBS AND FRATERNITIES

Have You Considered  
Our Prices?

We Do Our Best to Please

STUDENTS  
THE

MERCHANTS & FARMERS BANK

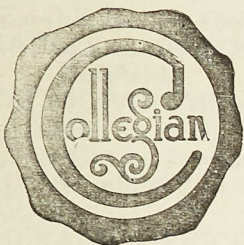
Will be glad to carry your  
Checking Account.  
You will find it a convenient  
and pleasant place.

R. E. SCHUMAN,  
Cashier.



ITS A LITTLE  
THING TO LOOK  
FOR

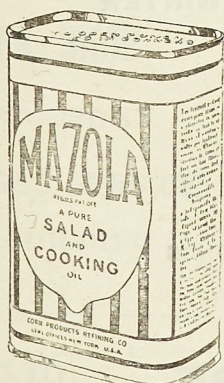
ITS A BIG THING  
TO FIND



The Collegian Label on Clothing, means the same as Sterling on Silver—The Very Best

# Heller's

M  
A  
Z  
O  
L  
A



Mazola is more economical, richer than lard and all the natural flavor of the foods cooked in it is retained

Sold at  
**THE CASE GROCERY**

Phone 309

SEE RUCKER FOR  
ALL KINDS OF INSURANCE

## OUR TEAM.

M. S. M. has been fortunate this year, in that it has had a good number of men out for each position on its football team.

At end we have had, up until recently, six men contending for the two berths on the regular squad. Two have been shifted, one to tackle and the other to the backfield, leaving Wilson, Gray, Watkins and Brandenburger. "Mort" is one of last year's regulars, and altho he did not get an early opportunity this year, he has persisted, and has been playing in the more recent games, showing up with his usual pep and fight. Gray and "Watty", both new men, are fighters, and can always be depended upon to hold down their side of the line. "Brandy," who suffered injuries early last season, and did not get a chance, has been playing a steady, consistent game this year, and is one of the mainstays in the left flank of our line.

The tackle position is one that is still hotly contested. Four men are filling that position, Bolt, Zook, Wendell and Buck, the latter being uncovered in the Arkansas game. Buck, early in the season showed up well at end, but not until he was shifted to tackle did he seem to be in his correct place. In the Arkansas game he played hard, and in last Saturday's game played tackle just long enough to show what he could do. He is fast, and a valuable punter. Bolt, another of last year's regulars, is fighting hard to hold his old position. He has weight, and with his ire aroused can tear up any line. Zook has that old fight in him that puts a man on the bottom of every play, and he should be given credit for his nerve in playing football at all. "Dip" Wendell, who is always the recipient of hard knocks, was given a week to

recover for last Saturday's game, having pulled a muscle in the St. Louis U. game. "Dip" was last year's hard luck man, having his shoulder broken three times before he would say "enuf." He has the stuff that put him in harness again this year, receiving black eyes and bruises. "Dip" played Saturday against the Normals, taking his share of the bumps, and always coming up for more.

At guard Parkhurst, Christner, Fischer and Coffey are working. "Babe" is a heavy-weight, and is, at present, busily engaged in defending himself against another heavy weight in the person of Coffey. Coffey started Saturday's game, but "Babe" relieved him at the half. "Gobby" holds his own with the big boys by fighting them off their feet. He is a scrapper, and has been playing regularly. Fischer, who has been shifted from center to tackle, and finally to guard, is a good defensive man, and can worry any part of the line he bumps against.

At center we have a combination in Zoller and Sanders. Zoller is a heavy-weight from last year's squad, and a good fighter, but we must be frank to say the "sand in Sanders" put "zip in Zoller" this year, giving us a center combination that is hard to beat.

Capt. Cairns at quarter has been playing a great game all year. He is cool-headed when on the field, is a shifty open-field runner, and a consistent ground gainer. "Buddy" has placed himself in M. S. M.'s hall of fame, and when the fathers start looking for mythical all-state material, we predict much for him. Gettler, who has been running the second string men, has not had an opportunity to show his mettle. "Get" is fast and shifty, and will make a

Continued on Page Eight.



## **COLD WEATHER DRINKS**

**HOT CHOCOLATE FUDGE**

**HOT COFFEE**

**HOT CHOCOLATE**

WITH WHIPPED CREAM

**HOT BEEF BOUILLON**

**HOT TOMATO BOUILLON**

**OYSTER COCKTAILS**

AT OUR

**SODA FOUNTAIN**

**ICE CREAM WILL BE CARRIED ALL DURING WINTER**

CALL UP TELEPHONE 159 AND WE WILL  
DELIVER TO YOUR RESIDENCE

**CANDY**

WE CARRY A FULL LINE OF BOX GOODS 1 TO 5 POUNDS  
WHITMAN'S, LOWNEY, NUNNALLY

**THE STUDENTS STORE**

Across From The Post Office



## MAXINE CAFE

A FITTING PLACE  
FOR THE STUDENTS

Just Like Meals at Home

## THE ROLLA HERALD

Established in 1866  
CHARLES L. WOODS,  
Publisher

JOB DEPARTMENT

Second to None

Get your Cards, Invitations,  
and all first class Job Work  
done at the

HERALD OFFICE  
Student Note Book Paper  
For Sale

THE  
UNITED ELECTRIC

## SHOE REPAIRING CO.

ROLLA, MISSOURI.

M. DAVIDSON, Proprietor

First Class Work Guaranteed

We use only the best Leather  
PRICES REASONABLE

## BARBER SHOP

TAYLOR MURRAY.

FIRST CLASS SERVICE

GRANT BUILDING

GO TO

C. H. DENT

FOR YOUR

MERCHANDISE WANTS

The Grant House Corner

## MASS MEETING RESPONDED GENEROUSLY TO APPEAL FOR FLOWERS.

Enough Remains to Form Nucleus for "Eddie Bohn Memorial Fund."

As soon as news was received in Rolla of the lamentable death of "Eddie" Bohn Monday evening as the result of injuries sustained in the football game last Saturday a mass meeting of the student body was called. Prof. Thornberry and E. L. Miller, Jr., addressed the meeting.

"Thorny" stated the purpose of the meeting and asked for small donations for the purpose of buying flowers in the name of the student body. When the hat was passed the response was so generous and unexpectedly large that a great deal more than the required amount was collected.

Therefore, it was decided to send about seventy-five dollars worth of flowers, and place the remainder, over one hundred dollars, as a nucleus for a memorial fund for the purpose of erecting some suitable memorial to the memory of "Eddie."

Almost every student and some of the Profs. are already in on the fund, but every one should come in, even if only for a dime. At the mass meeting \$142.66 was collected in voluntary subscriptions, in amounts from a dime to two dollars, according to the ability of each. Now those who have not come in surely are able to contribute at least a dime to the fund, and all are urged to do so.

Friends of "Eddie" among the town people have subscribed, and many more probably would like to do so. But as these people will not be solicited, they will have to give their contributions to Prof. Thornberry personally. Also there are many friends of "Eddie" among the alumni, and those who wish

ROLLA HAS A  
HONK-E-TONK  
THE HOT DOG

CASIS

Across From The  
H & S

WE WELCOME ALL

The Large and Small

National Bank of Rolla

TAKE ADVANTAGE

of the few remaning

NICE DAYS

FOR PICTURE TAKING

and get your rolls at

BAUMGARDNER'S

to help perpetuate his memory may send checks to "Thorny" made out to him personally, or made payable to the "Eddie Bohn Memorial Fund."

## HIGH SCHOOL LYCEUM.

The next number of the High School Lyceum course will be Monday night, November 15, at 8 o'clock. A good entertainment is assured.

David A. Bash, '19, is spending this week at the Sigma Nu house. "Dave" has been employed as chemist in the central laboratory of the DuPont dye works, Deepwater Point, N. J., for the past nine months. He is well pleased with his position, and with that part of the country, and will return to work on December 1st.



**THE MISSOURI MINER.**

A weekly paper published by the Students, in the interest of the Alumni, Students and Faculty of the Missouri School of Mines and Metallurgy, Rolla, Mo.

Entered as second class matter April 2, 1915, at the Post Office at Rolla, Missouri, under the Act of March 3, 1879.

**STAFF.****Editorial.**

E. L. Miller, Jr. .... Editor  
H. L. Leonard ..... Associate Editor  
H. O. Norville ..... Assistant Editor  
E. S. Wheeler ..... Sports Editor  
Joe M. Wilson ..... Cartoonist

**Business Management.**

K. W. Booker ..... General Manager  
W. F. Netzeband ..... Business Manager  
S. M. Burke ..... Circulation Manager

Issued Every Friday.

Subscription price: Domestic, \$1.75 per year; Foreign, \$2.00; Single Copy, 8 cents.

**BENEFIT FOR  
MEMORIAL FUND.****Miner Dance Postponed a Week  
to Saturday, Nov. 20.**

The Miner Staff has postponed its dance from tomorrow night to Saturday night, Nov. 20, out of respect for the memory of "Eddie" Bohn. The price has been raised to one dollar instead of seventy-five cents, and all profits thus accruing will be turned over to the "Eddie Bohn Memorial Fund."

The original price of seventy-five cents was calculated to cover expenses of this dance, but if there should be any over the expenses this will also be thrown into the fund. Hunt's orchestra will furnish the music, and as this new orchestra is one of the best musical organizations ever gotten together in Rolla, it is worth the money just to listen to the music, even if you do not dance. Every student should be, and all town-people are invited to be, present next Saturday night and help swell the fund for perpetuating

the memory of "Eddie" Bohn and his sacrifice on the altar of school spirit.

**A. A. E. METTING POST-  
PONED INDEFINITELY.**

Out of respect to Eddie Bohn the regular meeting of the American Association of Engineers has been postponed indefinitely.

**ROLLAMO PLAY  
POSTPONED.**

Out of respect to "Eddie" Bohn, the Rollamo play, "Officer 666," has been postponed to December 4th. Seats may be reserved at 12 o'clock noon, on Tuesday, Nov. 23rd, at the H. and S.

FOR

**Guns and Ammunition**

SEE

**L. C. SMITH & SON**

Hardware of All Kinds

**DUNHAM'S****BARBER SHOP****FIRST CLASS SERVICE**

"Give Us A Trial"

**MODEL GROCERY**

Rolla's Cleanest Grocery

Phone 279

VISIT OUR STORE

And You Will Always See

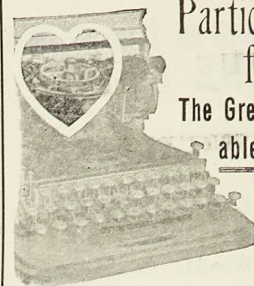
TEMPTING, FRESH AND

STAPLE GROCERIES

Ready For You.

Our Quick Delivery Service

at Your Command



Particularly  
for Students

The Great Interchange-  
able Type Writing  
Machine

All Business, All Sciences, All Languages may be had on ONE machine 365 different arrangements of type and languages, including Greek, Armenian, Chinese-Phonetic, and all modern European languages; also, type set for Engineering, Chemistry, Astronomy, Mathematics, etc.

Lectures, Notes, Theses, may be most beautifully and clearly transcribed on the Multiplex in condensed type.

Monthly payments. Good rebuilt machines. Machines rented.

A post card will bring full information.

THE HAMMOND TYPEWRITER CO.  
545 East 69th Street New York City  
St. Louis office, 502 Pine Street.

**MAN IS NOT WELL DRESSED**

If the Complexion of his

SHOES

Is not as Rosy as his face

SEE HAROLD FOR

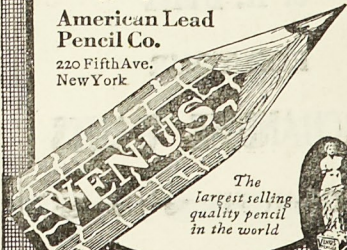
SHINES

DUNHAM'S BARBER SHOP

## VENUS PENCILS

FOR the student or prof.,  
the superb VENUS out-  
rivals all for perfect pencil  
work. 17 black degrees and  
3 copying.

American Lead  
Pencil Co.  
220 Fifth Ave.  
New York



The  
largest selling  
quality pencil  
in the world



## BOHN'S TOE DEFEATS WARRENSBURG—SCORE WAS 17 TO 0.

**Game Was Hard Fought. Moles Ejected in Final Period. Bohn Carried From Field Injured.**

In one of the scrappiest games seen on Jackling Field for a number of years, the Miners sent the Warrensburg Normal eleven down to defeat, the score being 17 to 0. This victory puts us one step nearer the conference championship.

Altho the Miners were unable to chalk up a counter during the first half, they outplayed the Normals, always keeping the "pig-skin" well in their opponents' territory. In fact, the ball was over our 40-yard line but once, and the Miners took it then on downs on the 35-yard line.

About the middle of the first period the Normals were pushed back to their 20-yard line, where two passes were uncompleted. Capt. Cairns then tried his toe, but the ball went wide, losing us our chance to score early in the game.

**Bohn's Toe Puts More Fight in Miners, and Starts Normal on Road to Defeat.**

Getting the ball early in the second half on our 20-yard line, the Miners marched down the field to the 50-yard line, where referee Krause inflicted a 15-yard penalty on Warrensburg for coaching from the side lines. This put the ball in striking distance of the Normal goal. A few plunges put us on the 10-yard line, and Bohn kicked a clean field goal for the winning score of the game. As the quarter ended the Miners had the ball on Normal's 7-yard line.

At the beginning of the final period the Normals held on their 4-yard line. Bohn was seriously injured a few minutes later, necessitating his being carried from the field. Soon af-

ter, Moles, Normal's touted open-field runner, was virtually kicked off the field for making insinuating remarks. This incident so demoralized the already weakening Normal defense, that the Miners slipped over a touchdown, and repeated a few minutes later, when McClurken intercepted a pass and ended with a blocked pass on Normal's 30-yard line. The following is the game, play by play:

### Miners Lose Chance of Scoring in First Quarter.

Miners kick to 27-yard line. Normal 1 yard thru line. Thru left tackle 3 yards. Lost 4 yards right end. Normal punts out of bounds on 33-yard line. Miners' ball. White circled end 4 yards. "Buddy" gained 7 yards right end. Kenning failed to gain, and "Buddy" punted to Normal's 17-yard line. Thru line 3 yards. Normal gained 1 yard, and kicked on the third down, the ball going out of bounds on 50-yard line. Miners' ball. Kenning gained 9 yards left end. "Buddy" made 6 yards thru line, and Owens 5 more, but line was offside, giving us a 5-yard penalty. Incomplete pass, making it second down, and 15 to go. A pass was completed to White for 4 yards, this proving to be the only pass completed by the Miners during the game. Third down, and 11 to go. "Buddy" 7 yards right end, Kenning making it first down by a plunge thru line. White and Owens circled ends for 6 yards, followed by a 4-yard plunge thru line by "Buddy," making it first down. White failed to gain. Kenning thru line for 2 yards. Owens failed to make it first down, giving Normal the ball. Normal punted on first play, the ball going out of bounds on Miners' 40-yard line. Miners' ball. "Buddy" made 5 yards left end, Kenning repeating, making first down. Normal penalized 5

yards off side.

Miners' ball, first and 10. Owens made 5 yards on a fake cross-buck, followed by a 1½-yard plunge by White. "Buddy" made it first down. Miners were penalized 5 yards off side. Pass was incomplete second down and 15 to go. The ball was on the Normal's 20-yard line. Two more passes were attempted, each being incomplete. "Buddy" tried for a field goal, but the ball went wide, giving Normal the ball on their 20-yard line. Normal made first down on three line plunges. Normal right end 5 yards. Thru line 2 yards. Around right end for 1 yard. On fourth down Normal failed

Continued on Page Nine.

THE  
**COMMUNITY THEATRE**  
The House of Clean Photo  
Plays,  
NEWBURG, MO.

## See What Sara Saw

IN THE  
—in the harem  
—in the mosque  
—in the desert  
—when she lifted her veil  
—on the street of mystery  
see all this and more

## 'The Virgin of Stamboul'

STARRING  
**PRISCILLA DEAN**

It took six months and \$500,000. to make this picture

**ONE NIGHT ONLY**

**Thursday, November 18**

FOR FRESH OYSTERS  
AND  
HOT AND COLD LUNCHES  
CALL ON US  
**PETRAGLIO'S**




Continued from Page Three.

good successor to "Buddy" next year.

At fullback Kenning and Mac-Clurken have been showing up well. "Mac," soon after the Cape game, developed an infected arm, and was not seen in action until last Saturday against the Normals. "Mac" came back strong, and pushed over our first touchdown. "Mac" has the "get there" attitude, and he usually lives up to it. Kenning is a new man, and has had his shoulder dislocated several times. Kenning played a hard game Saturday, altho he was somewhat handicapped by an injured foot and arm.

Owens Bohn, White, Squires and McBride have been playing the halves. "Hank," alias "Ginger" Owens is that kind of player who works conservatively. Seemingly, he does not exert himself, but instead dishes out his energy when and where it counts the most. As for picking holes where there "ain't none," well, "Ginger" Owens is there to a T. He always goes thru, and pull the hole a thru fter him. "Eddie" played excellent football this year. It was his "toeing" the ball over the bar that started Normal on their landslide. "Eddy" was fatally injured, and in his death every man knows that the team lost one of its best cogs, the school a real athlete, and every fellow a good friend. White, another of last year's letter men, has been playing a much better game this year. Fred seems to have lost the faculty of dropping the ball, and acquired one of "gluing" onto the "pig skin." Fred is a good ground gainer, for each step he takes clicks off a yard, and he takes them, too. Squires is a fast man, and altho ineligible for conference games, has played in all others on our schedule. "Buddie" McBride, who was only recently shifted



**Are your feet "hard to fit?"**

**Not for us, because we have so many WIDTHS in the shoes we carry.**

**Bring your feet to us JUST ONCE. We will make them so happy that they will never take you to any store but ours to buy shoes.**

**We have shoes for every member of your family.**

**Come in.**

**Our GOODS are GOOD; our PRICES LOW.**

**SCHUMANS**

Rolla's Biggest and Best Store.

to the backfield, is a scrapper. He helped put the ball over Normal's goal line Saturday, and should prove a strong man on our team next year.

Experienced. Reliab'le.  
**DR. F. C. NIEMILLER,**  
**DENTIST.**  
 ROLLA, MO.  
 Over Rolla State Bank. Phone 201

**DEPOSIT WITH**  
**ROLLA STATE BANK**  
**SAFETY AND SERVICE**  
**DEPOSITORY M. S. M.**

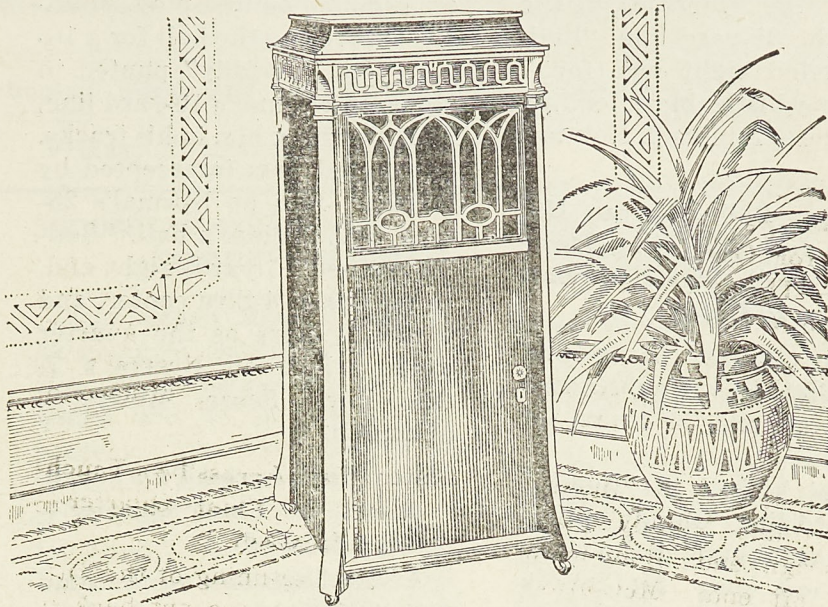


## THE NEW EDISON

"The Phonograph with a Soul"

—Come and get your copy of this valuable book. It tells about the New Edison PERIOD MODELS. It makes your phonograph choosing easy and a pleasure.

—All New Edisons are genuine period models—from the lowest priced to the most expensive. You may choose from Chippendale, William and Mary, Jacobean, Sheraton, and Heppelwhite designs.



Chippendale Model—Price \$295.

# JNO. W. SCOTT

8TH AND PINE

### BOHN'S TOE DEFEATS WARRENSBURG—SCORE WAS 17 TO 0.

Continued from Page Seven.

to gain, giving Miners the ball on 40-yard line. "Buddy" and White each gained 2 yards around end, but Kenning was thrown for a 5-yard loss on account of signals being mixed. Miners punt to Normal's 1-yard line. On first play Normal tried a pass from behind their own goal line, but it was incomplete, and they punted out of bounds on the 50-yard line. Miners were penalized 10 yards. "Buddy" gained 12 yards on first play, but fumbled, giving Normal ball on 48-yard line. Normal gained 1 yard. Incomplete pass to Moles. Normal lost 3 yards. Bohn substituted for White. Normal kicked to our 7-yard line. "Buddy" circled right end for 20 yards as quarter ended. Score, 0 to 0.

### No Scoring in Second Quarter.

Miner's ball. Bohn left end 10 yards, making first down. Owens thru tackle 4½ yards. Kenning gained a yard thru guard, but we were penalized 5 yards for off side. On the next play the Miners made 9 yards, "Buddy" making first down on the play following. Owens lost half yard. "Buddy" made 3 yards right end. Pass incomplete, Miners punting on the fourth down to 2-yard line. Normal lost 3 yards on fake play. Gained 2 yards thru line. Normal punted on third down, ball being fumbled, Miners recovering. Bohn gained 1 yard left end. Miners penalized 15 yards for holding, making it first and 23 yards to go. Three passes were incomplete, and the Miners punted. Moles gained 5 yards thru line. Normal thru center 1 yard. Normal punted, "Buddy" carrying the ball back to the 24-yard line. Owens tore thru line for 8 yards, "Buddy"

making it first and 10 right end. Owens gained a yard thru line. Miners lost 4 yards. "Buddy" made 12½ yards around left end, Owens making first down on the next play. Bohn made 4 yards on a cross-buck. Owens 6 yards left end. First down. "Buddy" made 3 yards right end. Sanders for Zoller. "Buddy" made 6 yards more left end, but on the next two plays the Miners failed to make first down, giving Normal ball. Normal punted on first play, "Buddy" bringing ball back to 40-yard line. Owens and "Buddy" each lost a yard. "Brandy" was hurt in one of these plays, and a pass to him on third down was incomplete. Bolt substituted for Buck, and Buck for Brandenburg. Miners punt to Moles, who was downed on 31-yard line. Pass incomplete to Moles. Another pass was completed for 10 yards. Miners were off side, but Normal refused penalty. Gained 5 yards



left end. Three passes were incomplete, the Miners taking the ball on the 35-yard line. "Buddy" circled right end for 7 yards as whistle blew, ending half. Score, Miners 0, Normals 0.

**Bohn Toes Ball Between Uprights for Our First Three Points—This Starts Normals on Road to Defeat.**

At the start of the second half McClurken was substituted for Kenning, and Parkhurst for Coffey.

Normal kicked to "Buddy" on 35-yard line. "Buddy" made 11 yards right end. Bohn made 2 more left end. McClurken fumbled, giving Normal ball on 50-yard line. Normal thru line for 4 yards. Moles around left end 1 yard. Normal thru line 1 yard. "Buddy" thru left tackle 8 yards. Time out for "Buddy." "Mac" thru line 10 yards. "Buddy" right end 4 yards. "Mac" made 2 yards on a criss-cross around left end. "Buddy" thru line 4 yards. First and 10 Normal penalized 15 yards for coaching from side lines. Bohn left end 4 yards. "Buddy" left end 2 yards. Owens thru center 5 yards, making first down. "Mac" thru center 2 yards, "Buddy" following for 3 more. "Mac" made 3 thru center and 4 thru guard for first down. Bohn thru left side 2 yards. "Mac" thru center 1 yard. "Buddy" lost a yard around end. Time out Normal. Third down and 9 to go. On the next play Bohn toed the ball over for the first score of the game. Score, Miners 3, Normals 0.

Miners kicked to Normal on their 20-yard line. Moles lost 3 yards. Normal faked a punt, and gained a yard thru center. Normal completed a pass, 18 yards. Time out Normal. Ball on Normal's 37-yard line. Normal thru center 1 yard. Moles lost 12 yards on an end run. Incomplete pass to Moles. Normal punted to Bohn, who car-

ried ball to 50-yard line. Miners fumbled on first play, "Buddy" recovering the ball for a 10-yard loss. "Buddy" punted to Moles on Normal's 10-yard line, Buck downing him in his tracks. Attempted pass intercepted by Wilson. Ball on Normal's 28-yard line. Miner's ball. "Buddy" gained 15 yards right end. "Mac" made 4 thru center, and Owens 3 more as the quarter ended. Ball on Normal's 7-yard line. Score, Miners 3, Normal 0.

**Miners Push Across Two Touchdowns in Final Quarter—Bohn Injured.**

At the beginning of the final period Zoller was put back in the game in place of Sanders. Third down and 7 yards to the goal. "Buddy" made 1 yard right end. Owens thru center 1 yard. Normals took the ball, as the Miners needed 1 more yard for first down. Ball on 4 yard line. Normal punted outside on own 43-yard line. Miner's ball. Three passes were incomplete, and "Buddy" punted to Normal's 18-yard line. Moles failed to gain around end. Normal made an on side kick to one of their own men for 10 yards. Normal made 3 yards right end. Normal made 4 yards thru center, but failed on second attempt. Punted to Bohn on 45-yard line. Time out for Bohn, who was seriously hurt. McBride substituted for Bohn. Normal's ball, as Bohn fumbled when injured. Normal thru center 1 yard. Pass incomplete. Around right end for 8 yards. Thru center, but did not make first down by inches. Moles put out of game for passing remarks at the referee. Normal lost 2 yards on the next play thru center, giving the Miners the ball. "Buddy" made 9 around left end. McBride thru center 2 yards. First and 10. "Buddy" lost 1 yard. McBride right end 1 yard. "Buddy" punted to Normal on

20-yard line. Normal gained 9 yards. Two passes were incomplete, and Normal punted, "Buddy" returning the ball to Normal's 36-yard line. Owens left end 3 yards. Time out Christner. "Buddy" thru tackle 8 yards. "Buddy" left end 2 yards. "Mac" left end 3 yards. Owens thru center 10 yards to Normal's 9-yard line. McBride thru center 8 yards. Miners 1/2 yard gain. "Mac" thru guard and tackle for touchdown. Score Miners 9, Normal 0. Goal was kicked, making total score 10 to 0.

Watkins was substituted for Wilson, and Zook for Wendell. Miners kicked over the Normal goal, McBride falling on ball. Referee refused to give us a touchdown, calling it a touch-back instead. Normal's ball on 20-yard line. Normal completes 20-yard pass. Pass incomplete. Pass complete 9 yards. "Mac" intercepts pass and makes 2 yards. Miners' ball on 30-yard line. "Buddy" right end 20 yards. McBride left end 5 yards. Ball on Normal's 5-yard line. "Buddy" plunged thru guard and tackle for touchdown. Goal was kicked, making the score, Miners 17, Normal 0. Miners kick out of bounds. Miners kick again to Normal's 3-yard line. Normal pass incomplete. Another pass was blocked as the final whistle blew. Score, Miners 17, Normal 0.

**Line-up:**

Normals, 0.	Miners, 17.
Swindell.....l. e.....	Wilson
Chapman.....l. t.....	Wendell
Boone.....l. g.....	Christner
Markey.....c.....	Zoller
Marshall.....r. g.....	Coffey
Schib.....r. t.....	Buck
Simpson.....r. e.....	Brandenburger
Dorland.....q.....	Cairns
Henderson.....f. b.....	Kenning
Moles.....r. h.....	White
Giltner.....l. h.....	Owens

Referee, "Dog" Krause; umpire, Busick; head linesman, Thornberry; time of quarters, 15 minutes.

The Miner is late this week because of the lack of power.