



Missouri S&T Magazine, March-April 1960

Miner Alumni Association

Follow this and additional works at: <https://scholarsmine.mst.edu/alumni-magazine>

Recommended Citation

Miner Alumni Association, "Missouri S&T Magazine, March-April 1960" (1960). *Missouri S&T Magazine*. 112.

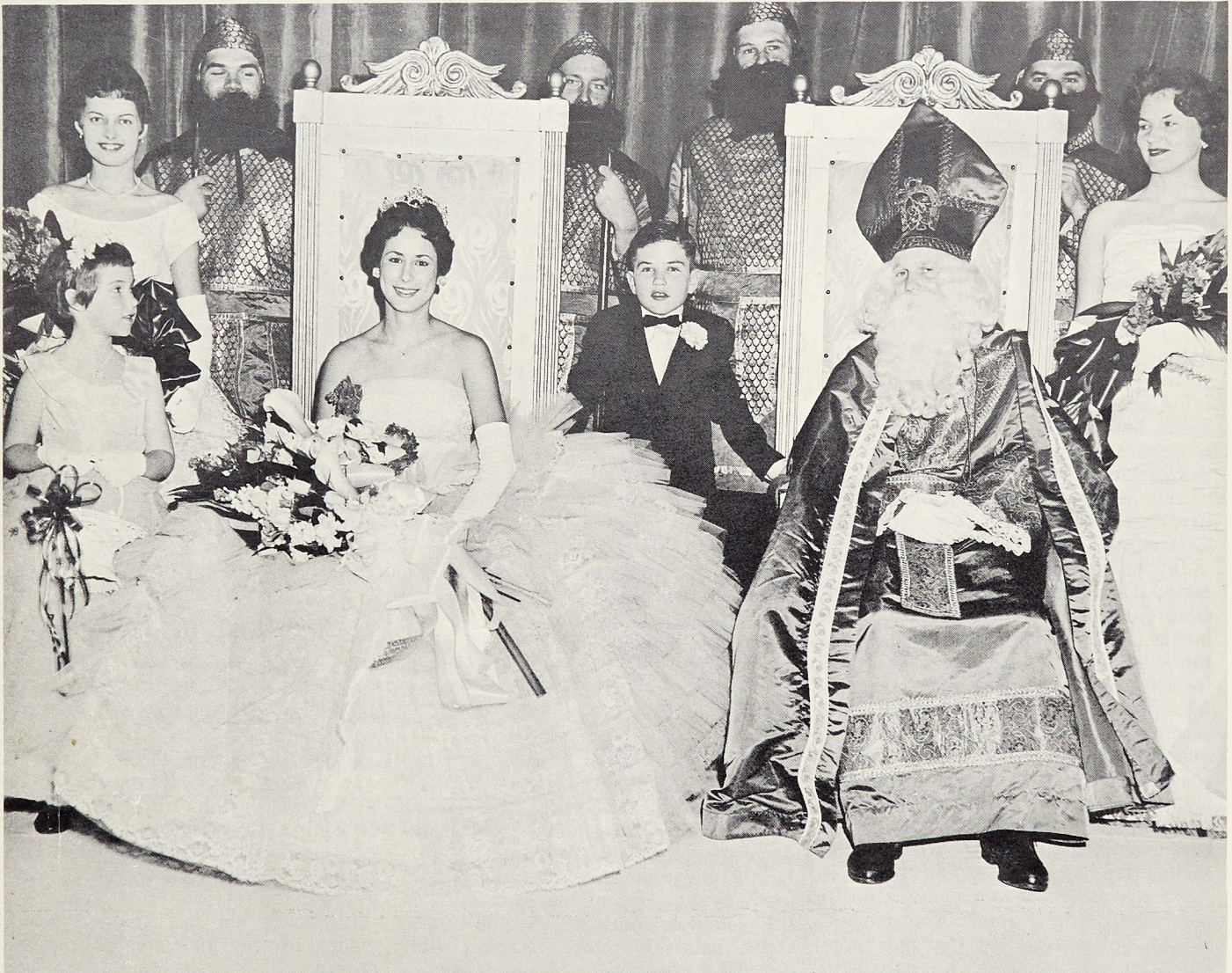
<https://scholarsmine.mst.edu/alumni-magazine/112>

This Magazine is brought to you for free and open access by Scholars' Mine. It has been accepted for inclusion in Missouri S&T Magazine by an authorized administrator of Scholars' Mine. This work is protected by U. S. Copyright Law. Unauthorized use including reproduction for redistribution requires the permission of the copyright holder. For more information, please contact scholarsmine@mst.edu.

MSM Alumnus

MISSOURI SCHOOL OF MINES AND METALLURGY
ROLLA, MISSOURI

St. Pat's Coronation Ceremony



The scene following the Coronation ceremony at the annual St. Patrick's Day celebration held at MSM. At the left is Miss Gloria Brewer, the Queen's attendant and daughter of Professor John Brewer; Kathy Carnahan, flower girl; Miss Phyllis Tucci, the Queen of Love and Beauty; Warren Edward Dean, Jr., crown bearer; St. Patrick portrayed by Don Gunther, and Gloria Krieger, the Queen's attendant.

March - April 1960

Volume 34 - Number 2

President's Column

Are You a Go-Getter Or a Go-Giver?

A review of the report on the 1959 Alumni Fund recently released, prompts some reflections which I would like to share with you.

The report shows that with a total of 7409 graduates from 1891 to 1957 inclusive, we have addresses of 6139 living. Of this number a total of 2360 made contributions to the Alumni Fund in 1959, the average contribution being \$8.07. What happened to the other 3779? It is difficult to believe that financial inability to contribute the average of \$8.07 was a very important consideration in any great number of cases. We must assume that just plain indifference is the answer. Let's probe a little deeper—and try to discover if we can, the reasons for this indifference. Possibly we haven't done everything we might have done in arousing the interest of our M. S. M. graduates in helping their alumni association. Possibly the reason is deep-rooted in the very nature of man. It seems to me that there are many different ways of classifying people, just as we classify rocks, fauna and flora, and the table of the elements — according to their properties or characteristics. For the purpose of this brief article we will divide graduates into just two classes — The Go-Getters and The Go-Givers.

In our culture, with its emphasis on material success, it is natural that we admire the aggressive, dynamic, hard-hitting fellow who drives himself through life with singleness of purpose toward his one objective of reaching the top. We need men like this and much of the world's great achievements are due to their ambition. However, long observation has convinced me that many fine men in this category find success, once achieved, a hollow shell, and happiness always just a little beyond their grasp.

On the other hand, we have a lot of men who, without minimizing the importance of success, feel that it is more important to Make a Life than to Make a Living. These are the Go-Givers.

They find time, and pleasure in helping the church of their choice, their community chest, their political party or any of a hundred other outlets for their social and civic consciousness, in-

MSM Alumni Association

OFFICERS

Term Expires

President	Paul T. Dowling '40	Nooter Corporation	1962
		1400 South Third St. Louis 4, Missouri	
Executive Vice-President	James W. Stephens '47	Missouri Public Service Co.	1962
		10700 East 50 Highway Kansas City 33, Missouri	
Vice-President Areas 1, 2, 3	J. Craig Ellis '38	524 Highland Avenue	1962
		Westfield, New Jersey	
Vice-President Areas 4, 5, 6	R. O. Kasten '43	Union Wire Rope Co.	1962
		21st and Manchester Ave. Kansas City 26, Missouri	
Vice-President Areas 7, 8, 9	Barney Nuell '21	1015 Wilshire Boulevard	1962
		Los Angeles 17, California	
Secretary-Treasurer	Leon Hershkowitz '41	Assistant Dean	1962
		Missouri School of Mines Rolla, Missouri	
Executive Secretary	Francis C. Edwards	MSM Alumni Association	
Editor, "MSM ALUMNUS"		Old Metallurgy Building Rolla, Missouri	

DIRECTORS AT LARGE

Ralph C. Graham '31	Tennessee Gas & Oil Co., P. O. Box 2511, Houston, Texas	1962
Mervin J. Kelly '14	2 Windermere Terrace, Short Hills, New Jersey	1962
Rex Z. Williams '31	Rolla State Bank, Rolla, Missouri	1962

AREA DIRECTORS

Area No.	Director	States and Provinces Embraced	Term Expires
1.....	Robert F. Schmidt '45 6 Willowbrook Avenue Lansdowne, Pennsylvania	New England, N. Y., N. J., East Pa., Dist. of Columbia, Md., Va., Delaware, Province of Quebec	1961
2.....	J. C. Salmon, Jr. '22 Box 967, Minden, Louisiana	S. Ark., N. C., S. C., La., Miss., Ala., Ga., Fla.	1960
3.....	O. W. Kamper '35 608 Villavista, Pittsburgh 34, Pennsylvania	Pennsylvania, W. Va., Ohio, W. Pa., Ky., Tenn., Ind. (Except Chicago Industrial Area)	1960
4.....	J. Walter Wallace '48 18455 Stedhall, Homewood, Illinois	N. Ill., Chicago Industrial Area in Indiana, Wisc., Mich., Minn., Province of Ontario	1960
5.....	C. C. Palmer '40 1641 Andrew Drive, St. Louis 22, Missouri	S. Ill., E. Mo., N. Ark.	1961
6.....	Bennett D. Howell '50 3313 South Pittsburgh, Tulsa, Oklahoma	Iowa, W. Mo., Nebr., Kans., Okla.	1962
7.....	Kenneth F. Anderson '42 1114 Commerce St., Room 1909 Dallas 2, Texas	Texas, Arizona, New Mexico	1961
8.....	Harvey L. Tedrow '11 Olin Hotel Denver, Colorado	Ida., Montana, N. D., S. D., Wyo., Colo., Nev., Utah, Provinces of Manitoba, Sask., Alberta	1960
9.....	William B. Fletcher '34 12081 Smallwood Downey, California	Alaska, Washington, Ore., California, Hawaii	1961

cluding their Alma Mater — which prepared them for life. Without the Go-Givers our material civilization would soon decay and crumble, because it is the volunteer work of the Go-Givers which builds hospitals, churches, educational institutions, and other worthy causes, which are the cement that holds our materialistic civilization together. In so doing, they not only help others but, equally important, find happiness and fulfillment for themselves.

The Alumni Association needs you — and you need the Alumni Association

If you haven't yet sent your contribution — do it now. And equally important with giving a bit of your money is giving a bit of your time. There's always room for the Alumnus who is willing to take an active part in local chapter affairs or on the national level.

Are you a Go-Getter or a Go-Giver?
Barney Nuell '21
Vice President
Areas 7, 8, 9.

2650

MSM Alumnus

Dignitaries Attend Ceremonies at New Buildings



Left to Right: James A. Finch, Jr., president, Board of Curators, U. of Mo.; Dr. Frank A. Marston, president, American Society of Civil Engineers; Dean Curtis L. Wilson; Dr. Enoch R. Needles, senior partner in the nationally-known firm of consulting engineers—Howard, Needles, Tammen and Bergendoff; Professor E. W. Carlton, chairman, Department of Civil Engineering; William H. Wisely, vice-president, American Society of Civil Engineers; Dr. Elmer Ellis, president, U. of Missouri.

C. E. Building and Student Union Dedicated; in Use Since January

April 7th was a red letter day at MSM. Two new buildings, the Civil Engineering Building and the Student Union costing nearly \$1,750,000 were dedicated. And it brought to the campus those individuals who did much in making these dreams and badly needed facilities to become a reality.

The Honorable James T. Blair Governor of Missouri; the Curators of the University of Missouri; Elmer Ellis President of the University of Missouri; Dean Curtis L. Wilson, Missouri School of Mines and Metallurgy, and Gene Sally, State Representative, all participated in the dedication ceremonies of the buildings which through their work and planning are now in full use by the record-breaking enrollment at MSM.

Governor Blair said he was "fully a-

MSM Alumnus

Issued bi-monthly in the interest of the graduates and former students of the School of Mines and Metallurgy. Subscription price, \$1.50, included in Alumni Dues. Entered as second-class matter Oct. 27, 1926, at Post Office at Rolla, Mo., under the Act of March 3, 1879.

March April 1960

ware of the need . . . for additional buildings to accommodate the increasing enrollment at the School of Mines. "That enrollment far surpassed expectations and has dramatized in a practical and immediate sense one of the principal difficulties facing our colleges and universities." He added, "there is strong evidence that the citizens of Missouri are interested in a sound, economically administered program of expansion at the college and university level."

The dedication of the Student Union was held in the morning with Dean Curtis L. Wilson presiding. Harold E. Pride, Secretary, Iowa State Memorial Union, Ames, Iowa, and former national president of the Association of College Unions, gave the address. Also present representing the Association of College Unions, was Jack Overman, Kansas State College, Pittsburg, Kansas, Regional Representative of ACU. President Ellis accepted the keys of the new building from the architect, and in turn presented them to Dean Wilson, who gave them to Joseph C. Lewis, the first president of the Student Union.

In the afternoon, dedication ceremonies were held in the auditorium of the beautiful new Civil Engineering Build-

ing. In addition to the state and school officials who were present for Student Union dedication, were Frank A. Marston, national president of the American Society of Civil Engineers and William H. Wisely, Vice President of ASCE.

Dean Wilson gave the welcoming remarks and introduced the platform party. James A. Finch, Jr., president of the University of Missouri Board of Curators expressed the pride of that group in the completion of the buildings. The keys of the building were accepted by President Ellis from the architect, who presented them to Dean Wilson and he gave them to Professor Ernest W. Carlton, Chairman of the Department of Civil Engineering, who the Dean described as "the happiest man in Rolla."

In the acceptance of the keys, President Ellis pointed out that the completion of the new buildings on the MSM campus is only the first step in the construction that will be necessary during the next few years. Present facilities take care of only present needs. President Ellis stated, with much additional expansion needed to take care of expected increase in student enrollment.

Present to give the principal address was Dr. Enoch R. Needles, '14, senior partner in the nationally-known firm of consulting engineers Howard, Needles Tammen and Bergendoff, New York N. Y. and Kansas City, Mo. Highlighting his talk with reminiscences of his days as a student at MSM, Dr. Needles said, "When I arrived in Rolla as a freshman in 1910, I thought the Missouri School of Mines was the finest engineering college in the world, and during the past fifty years I have still found no reason to change my first opinion of the school."

Dr. Needles, whose engineering achievements include some of the most famous bridges and turnpikes in the country, gave much credit for his own instruction and inspiration to Professor Elmo Golightly Harris, who was chairman of the Civil Engineering Department when he was a student. Emphasizing that there is no limit to the potential usefulness of the students who will be educated in the new facilities, Dr. Needles pointed out that it was perhaps symbolic that the construction of the building was superintended by one of the School of Mines own Civil Engineering graduates, Kenneth Heimbaugh, Class of 1953.

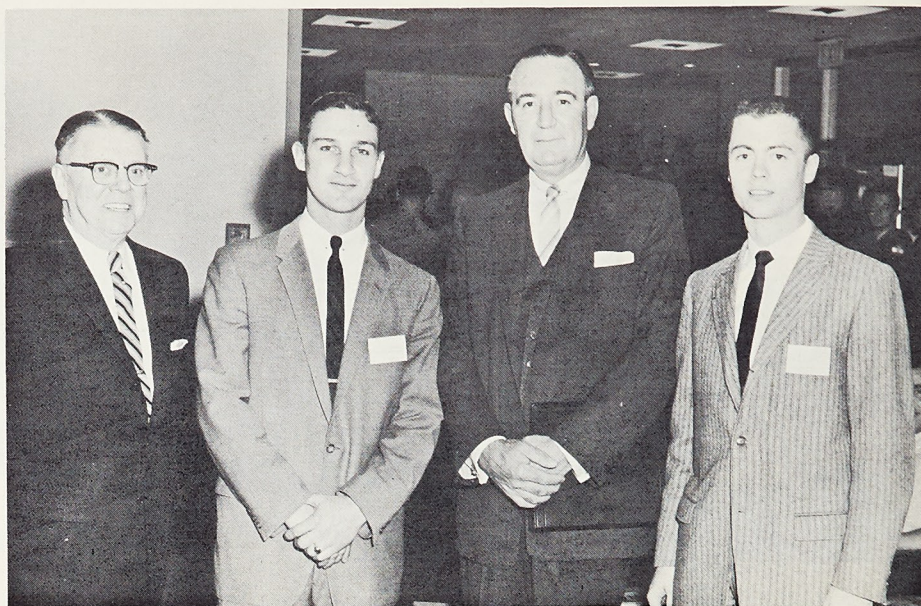
Dr. Needles has done many things for the Department of Civil Engineering at MSM, among which were the establishment of an endowment fund to provide scholarships for civil engineering students and he equipped the Needles Conference Room in the new Civil Engineering Building.

Approximately 300 participated in the dedication activities, with engineers educators, MSM alumni and friends of the school traveling to Rolla from all parts of the state of Missouri and from many other states.

Caterpillar Tractor Co. Promotes MSM Graduates

The Caterpillar Tractor Company, Peoria, Illinois, has announced the promotion of two MSM alumni. Dr. David S. Gould who joined Caterpillar after receiving his Ph. D. in 1957, has been promoted to Assistant Metallurgist in the Peoria plant. D. L. Brugioni, who received his B. S. in Mechanical Engineering in 1950, and was employed by Caterpillar that same year, has been promoted to General Office Quality Control.

Governor With Dean and Student Leaders



Left to Right: Dean Curtis L. Wilson; Michael J. Bertorello, president of the MSM Student Council; Governor James T. Blair, Jr.; Wayne Siesenop, president of the MSM Student Union.

Engineering Curricula Inspected in March By Committee From Accrediting Agency

The periodic inspection of the engineering curricula on the Missouri School of Mines and Metallurgy campus by the Engineers Council for Professional Development was held on March 10 and 11, Dean Curtis L. Wilson has announced.

The ECPD is the accrediting agency for all engineering curricula in the United States. The inspection was for accreditation of the Engineering curricula on this campus for a maximum period of five years. The last general inspection on the campus was in 1955.

The inspection committee was under the chairmanship of Dr. John C. Calhoun, Chairman, ECPD Region VI, 227 System Adm. Bldg., College Station, Texas. Other members of the inspection committee were R. C. Earlougher of the Earlougher Engineering Company, Tulsa, Oklahoma, who inspected the Petroleum option in Mining Engineering; Professor R. W. Moulton, Department of Chemical Engineering, University of Washington, Seattle Washington, who inspected the Nuclear option of Metallurgical Engineering; J. E. Boyce, Personnel Department Engineering Staff, General Motors Cor-

poration, General Motors Technical Center, Detroit 2, Michigan, Mechanical Engineering.

Mining Geology option of Mining Engineering was inspected by Dean E. F. Cook, College of Mines, University of Idaho, Moscow, Idaho; Electrical Engineering, Dean Herman A. Moench, School of Engineering, Rose Polytechnic Institute, Terre Haute, Indiana; Ceramic Engineering, Professor Lane Mitchell, School of Ceramic Engineering, Georgia Institute of Technology, Atlanta 13, Georgia; Metallurgical Engineering, Professor J. W. Spretnak, Ohio State University, Columbus, Ohio.

L. I. Gothern, Director of Engineering and Training, Jewell Ridge Coal Company, Tazewell, Virginia was scheduled to inspect the Mining Engineering Curriculum, but was unable to get out of Virginia because of the excessively heavy snow in that area.

Dean Wilson arranged for a luncheon meeting with the inspection committee and department chairmen of the School of Mines and Metallurgy at noon on March 10, the luncheon being held in the new Student Union Building. President Elmer Ellis was present for the

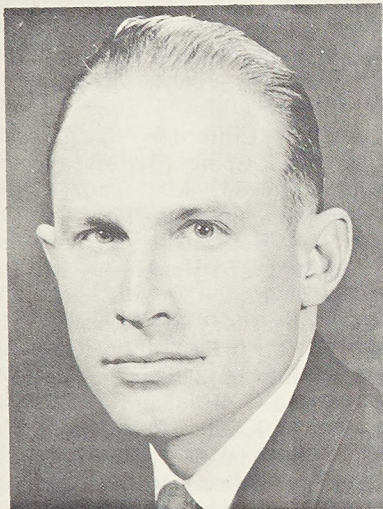
MSM Alumnus

luncheon and also for a meeting with the committee before the inspection work began.

Dean Wilson said that the results of the inspection will not be made known until next October when the Engineers Council for Professional Development issues its annual report. The Dean said, however, that all members of the inspection committee expressed general satisfaction with the conditions they found on the campus.

Daniels Gets Sales Manager Job With General Electric

T. D. Daniels '46, has been appointed sales manager for General Electric Company's Insulating Materials Department Schenectady, N. Y. Mr. Daniels joined General Electric in the Advance Scientific Program in 1946. From mid-1948



T. D. Daniels

until 1956, he served as sales engineer in the company's Los Angeles office, first for the Chemical Materials Department and later for the Silicone Products Department. He became sales development specialist at the Silicone Products Department in Waterford, N. Y. in August 1956. In January, 1958, he was transferred to Downey, California, as the department's western district manager, a position he held at the time of his present appointment.

Mr. Daniels, who is married to the former Twila MacPhee of Troy, N. Y., is a member of the Los Angeles Rubber Group and the YMCA Men's Club of Fullerton, California.

Mr. and Mrs. Daniels have one son, Tommy, 18 months old.

March April 1960

St. Pat's Celebration One of Best; Queen Crowned at Ball in New Student Union

The 1960 St. Pat's celebration has been termed one of the best ever. There was a question whether the annual parade would be held. The delayed affirmative decision, the snow and severe cold weather may have prevented some fraternities and organizations from preparing a float entry. But it is the consensus of opinion that the floats in the parade were some of the best in recent years. All the floats were on the theme of motion pictures and there was a great variety of interests and ideas.

The first place winner was from Pi Kappa Alpha. The theme of the float was "The Vikings." Second place was taken by Phi Kappa Theta whose float depicted "Ben Hur." And third place was awarded to Sigma Phi Epsilon who probably had the largest float in the parade. Their float was a Showboat with a moving paddle wheel.

Probably the most important and without a doubt the most coveted trophy of the two day event is the Queen of Love and Beauty of the St. Pat's Celebration. Chosen for this honor was Miss Phyllis Tucci, the candidate of Phi

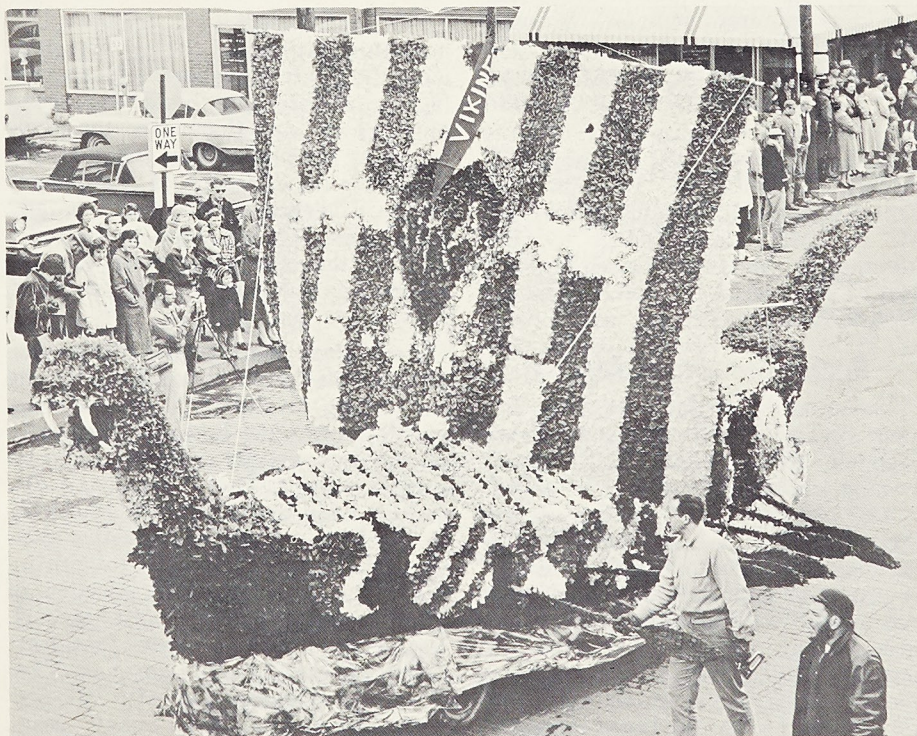
Kappa Theta fraternity. She is the daughter of Mr. and Mrs. Albert Tucci, of St. Louis, Missouri, a senior at St. Joseph's Academy in St. Louis county. Miss Tucci is 5' 7", a brunette with previous modeling experience at Stix, Baer and Fuller, St. Louis, Mo.

The coronation ball was held in the new Student Union Building on the MSM campus. And Miss Tucci became the first queen to receive her crown in this beautiful new facility. The queen was crowned by St. Patrick, another St. Louis resident, Don Gunther, of the Phi Kappa Theta fraternity.

Music for the coronation and St. Pat's Ball was furnished by the renowned Richard Maltby Orchestra.

St. Pat bestowed knighthood upon one senior of each fraternity and the independents. Various fraternity parties, breakfast dances and parties lasted throughout Friday night, and Dixieland and jazz concerts were held Saturday afternoon. The masquerade ball Friday night drew a large crowd to the new Student Union Building where dancing and gaiety ruled supreme.

Pi Kappa Alpha's Winning Float



Alumni Section News

Southern California Section

The St. Pat's meeting of the Southern California Section was held at the Redwood House in the Los Angeles Civic Center, Saturday evening, March 19. One of the largest crowds the section has ever had at their gatherings was on hand to welcome Alumni Association President Paul Dowling and Mrs. Dowling, who had been visiting in Los Angeles the previous week. Unfortunately, Paul was called back to St. Louis at the last moment by the untimely death of his father.

As usual, a number of our faithful "old timers" were present, including Eve H. Greene '11, S. C. Hollister '13 and Frank Blake '10. It was also gratifying to see a fair representation of the more recent graduates including William Burke '59, John Burrows '58, Clyde C. Corey '59, Phil Elam '59, Harry K. Lum '59 and Paul Wilson '59.

Others present were: Raymond W. Borchers '33, Mr. and Mrs. Jack Fleischli '43, Mr. and Mrs. William Fletcher '34, Mr. and Mrs. James Gostin '44, Mr. and Mrs. Don Huseman '43, Mr. and Mrs. Tom Harsell '39, Mr. and Mrs. Paul Halasey '28, Jim Miller, '38, Mr. and Mrs. Barney Nuell '21, Mr. and Mrs. Rene Rasmussen '43, Mr. and Mrs. Bill Schirmer '49, Mr. and Mrs. Hubert R. Smith '48, Mr. and Mrs. Ernest Stolle '34, John O. Wilms '43, Mr. and Mrs. Lloyd Youngs '49, Rex Monroe '32, and son Duane, Mr. and Mrs. Floyd Smith '41, and Mr. and Mrs. Walter Schamel '34.

Rocky Mountain Section

The Rocky Mountain Section held their annual St. Pat's party at the 26 Club, in Denver, Colorado, Saturday evening, aMrch 19, 1960.

The two days delay in the celebration date may have accounted for the rag-toggle condition of his "imminance." or it may be that creaking joints do not synchronize well in uninhibited caperings. In any event, John R. Post, St. Pat '39, in his exubriant re-approach to the exhalted throne made the shamrock greener, the fluid accouterments

Rocky Mountain Section Meeting



(L. to R.) Mrs. Bland, George V. Bland '04, Mrs. Martin, Bob Martin '49, Ike Edwards, Pauline Schroeder '50, Harvey Tedrow '11.



(L. to R.) Harvey Tedrow '11, George V. Bland '04, Clifford Wilfley '05.

more stimulating and the blarney stone more fragrant. He alternately spouted history and insults, bestowed several knighthoods; and flummoxed the whole passel by inventing upon the spot and conferring the only rank of "knight-ess" in the existence of the order, or any other order. The "Knight-ess" adroitly ducked the side-wise sweep of the sword which landed on her shoulder, thus saving her head.

Forty-three Knights and Ladies surrounded the festive board. Chief among the visiting royalty from afar were Associate Knight Ike Edwards, who spoke of the Emerald Isle, MSM, and sure enough Knight, George V. Bland '04, and his Lady from Custer, South Dakota. Early in the evening a rather dilatory oddment was attended to with indecent haste—to wit;—an election of officers came out of the mist. Jack N. Conley '31, Vibrant new President; Charles Rose '33, Vibrant new Vice-President; Pauline Schroeder '50, Secretary-Treasurer for so many years.

Everyone's lost count.

The forty-three Knights and Ladies that surrounded the festive board were: Francis "Ike" Edwards, Executive Secretary, MSM Alumni Association; Mr. and Mrs. Robert Martin, 1959 Section President; Mr. and Mrs. George V. Bland '04, Mr. Harvey Tedrow '11, Area Director; Mrs. Wanny Hunter; Mr. and Mrs. Clifford Wilfley '05; Mr. and Mrs. Jack Conley '31, Mr. and Mrs. Charles Rose '33; Mrs. Paul Fullop; Mr. and Mrs. John R. Post '39, (St. Pat in '39—Rejuvenated St. Pat '60) Mr. and Mrs. Ted Heiser '39; Mr. and Mrs. Dick Hunt, '50; Mr. and Mrs. James Springer '41; Mr. and Mrs. Cliff Page '31; Mrs. Kirk Cammock; Mr. and Mrs. Edwin M. Serafini '60; Mr. and Mrs. Jed G. Brunham '34; Mr. and Mrs. Robert Kaley '37; Mr. and Mrs. Joe Knittle '42; Mrs. Pauline Schroeder '50; Mr. and Mrs. Jordan M. '55, and Mr. and Mrs. Robinson Clair '38.

Arizona Section

All loyal sons of St. Patrick's (cowboy brand) gathered at the ancient Irish Castle of the Green Gables in Phoenix on March 19, to honor the patron Saint of all good engineers. After a brief sharin' of snake chaser, the group settled down to a banquet dinner. A reading of the minutes from the St. Patrick's Days at MSM during the periods 1909 to 1911 were given by Ben Cody '11, and pictures from the St. Pat's Day of 1911 were passed among the group.

Then, taking the witchin' wand in hand, Rowland Tragitt '23, made a thorough canvass of those present and discovered St. Patrick was actually there, hiding in the earthly guise of Ben

"O'Cody." After donning the robes of office and taking up his shillelagh, St. Pat proceeded to knight the loyal engineers present.

A wonderful turn-out of 36 people was present, including Mr. and Mrs. Ben Cody '11, Mr. and Mrs. Paul L. Walters, Jr. '47, Mr. and Mrs. Daniel E. Huffman '22, Mr. and Mrs. Kenneth J. Stedelin '38, Mr. and Mrs. Robert F. Winkle '42, Mr. and Mrs. John L. Brixius '47, Mr. and Mrs. C. M. Browning '48, Mr. and Mrs. W. D. Will '26, Mr. and Mrs. E. Rowland Tragitt '23, Mrs. "Cy" (Ione) Young '17, Hank Zoller '23, Mr. and Mrs. Fred Drete '43, Mr. and Mrs. John Wright '49, Mr. and Mrs. Joseph Durrenberger '51, Mr. and Mrs. J. K. Forman '10, Mr. and Mrs. Joseph Finagin '14, Mr. and Mrs. Harry Grigsby '48, Mr. and Mrs. Robert Pennington '50, and Mr. and Mrs. M. H. Detweiler '11.

The fall meeting of the Arizona Section was held on November 21 at the Macayo Restaurant in Phoenix. After an enjoyable conviviality, the guests settled down to their choice steak, roast beef, or Spanish food. Following the dinner, President John Brixius called for a few choice comments from each of those present, and the usual guarded report from the secretary.

Mr. and Mrs. Milan Detweiler then entertained the group with colored slides of their recent trip to Europe, where their son is one of the pilots for the commander of NATO, stationed in Paris, France.

Those present were the Alvis F. Dennisons '22, Mr. and Mrs. Milan Detweiler '11, Mr. and Mrs. Joseph C. Finagin '14, Mr. and Mrs. Daniel E. Huffman '22, Mr. and Mrs. John "Cy" Young '17, Mr. and Mrs. Ben Cody '11, Mr. and Mrs. John Brixius '47, Mr. and Mrs. Charles Browning '48, Mr. and Mrs. Fred Drete '43, Mr. and Mrs. William Will, Jr. '26, Mr. and Mrs. John W. Wright '49, Mr. and Mrs. Paul Walters, Jr. '47, Mr. and Mrs. John P. Harmon '28, and guest, Mrs. Harmon.

Sierra-Mojave Section

The Sierra-Mojave Section of the MSM Alumni Association, whose headquarters is at China Lake, California, held a meeting in March at the Knights of Columbus Hall in Ridgecrest, California. The main attraction was a large keg, sandwiches, snacks, etc.

All attending enjoyed the gabfest, talking about the old days and present

work loads at the nearby U. S. Naval Ordnance Training Station; then finally settling down to one of the various card games under the direction of Clarence Mettenburg '58.

Due to the success of this type of meeting, additional ones are planned for the future in addition to a family pot-luck supper scheduled for the latter part of April or the first part of May. Those who attended the gathering were: Ray Bauer '58, John Crecelius '59, Gary Davis '58, Bill Donaldson '31, Joe Holman '58, Bill McCulley '58, Clarence Mettenburg '58, Harold Nuffer '57, Wally Roehrs '58, Max Smith '59, Bill Smith '58, Lyman Van Buskirk '52, Jim Weimholt '59 and Jim Yates '59.

The local section is looking forward to the annual summer visit of various MSM faculty members who will work at NOTS as well as the June graduates who have been employed.

Dr. Eppelsheimer Speaks At Lafayette College

Dr. Daniel S. Eppelsheimer, Professor of Physical Metallurgy at MSM, spoke at Lafayette College, Easton, Pennsylvania recently. His talk dealt with the effect of radiation on metals, and the problems entailed with nuclear fuels were discussed at an ASM meeting.

Dr. Eppelsheimer discussed the metals used in atomic reactors and the effect of radiation on them. In his talk Dr. Eppelsheimer said that much of the information on these topics became available to the public only since 1955 following the Geneva Conference after which the Atomic Energy Commission has been most helpful in providing teaching materials on this line of study.

Dr. Eppelsheimer said that another basic problem has been the disposal of radioactive wastes from the fuel with no really effective way found to dispose of it.

Dr. Eppelsheimer is in charge of the nuclear option in Metallurgical Engineering on the MSM campus and is chairman of the committee that is supervising the construction of the building to house the Atomic Reactor recently made available to the school by the National Science Foundation. He is also a consultant to the Atomic Energy Commission in reference to the metals used in the construction of the atomic submarine, the Nautilus.

Prof. Maxwell to Take Part In Geography Symposium

Professor James C. Maxwell, of the Geology Department, MSM, has been invited to participate in the National Academy of Science Symposium on Quantitative Problems in Geography. The symposium, sponsored jointly by the National Academy of Science, the National Research Council, and the Office of Naval Research is to be held in Chicago on May 4th and 5th.

The symposium will cover the fields of physical geography including geomorphology and hydrology, social geography and economic geography. The eighteen participants selected for the symposium include in addition to Professor Maxwell, Dr. T. Hagerstrand of the University of Lund, Sweden, Dr. J. R. Mackay of the University of British Columbia, Dr. M. Gordon Weiman, Johns Hopkins University, and Col. Walter E. Wood, U. S. Army Quartermaster Research Center, Massachusetts.

Professor Maxwell will present his current research work on Quantitative Geomorphology of Mountain-Chaparral Watersheds. His work deals with the statistical analysis of measurements of the landform of several river watersheds in the mountains of southern California. The results of the analysis are quantitatively related to river flow, flood problems, and erosion problems. The mathematical solution was accomplished with high-speed electronic computers as was much of the work which is to be discussed at the Symposium.

Three Alumni Chosen For MSPE Offices

The Missouri School of Mines is well represented among the slate of officers listed in the Nominating Committee Report to the Missouri Society of Professional Engineers.

For President-Elect William E. Hedges '34, has been chosen. He is Director of Public Works and City Engineer, Springfield, Mo. The selection for Secretary is J. Kent Roberts, Professor of Civil Engineering, MSM. For Director-At-Large, John E. Wright '58. John is a Corrosion Engineer, Gas Service Co., Missouri Division, Kansas City, Missouri.

The Nominations Committee prepared a slate of six officers and three are Missouri School of Mines products.

Robert McCaw Becomes Editor of Magazine

Robert F. McCaw '27, has been named editor of **POWER ENGINEERING**, a magazine published monthly by Technical Publishing Company, Barrington, Illinois, and read by more than 43,054 power engineers in the utilities and industries. Mr. McCaw became affiliated with the magazine as associate editor in 1957 and was made managing editor in 1958. He took over the post of top editor upon the recent retirement of Chester R. Earle who will continue his association with **POWER ENGINEERING** as special projects editor.



Robert F. McCaw

McCaw who came to **POWER ENGINEERING** from Radio Corporation of America, in New York City, where he was director of facilities administration has had broad and varied experience in the public utility and industrial fields. As well as his B. S. degree in Electrical Engineering from MSM, he has been awarded a Professional Degree from MSM. He is a registered professional engineer in the States of New Jersey, Minnesota and Illinois.

Professional engineering societies in which he holds membership include the American Institute of Electrical Engineers, the American Society of Mechanical Engineers, the National Society of Professional Engineers, and the American Institute of Plant Engineers. He is a civilian consultant to the U. S. Department of Defense.

Mr. McCaw lives in Barrington with

his wife, Marie and their son Michael, a freshman in high school. A daughter, Mrs. Louis Schap, lives in Bethesda, Maryland.

T. H. Kennedy V.-Pres. of U. S. Steel's Tube Division

Truman H. Kennedy '26, has been appointed Vice-President-Operations National Tube Division of U. S. Steel Corporation. He started in the steel business in 1930 with the St. Louis Gas and Coke Corporation, Granite City, Illinois, as Superintendent of Blast Furnaces. From 1933 to 1935, he held various positions with Inland Steel Company and, for the next five years was Blast Furnace Superintendent at plants of Interlake Iron Corp., in Erie Pa., Chicago, Ill., and Toledo, Ohio.

Mr. Kennedy joined National Tube Company, now a Division, as Assistant-Blast Furnace Superintendent of its National Works in 1940. He was named Superintendent of Blast Furnaces in 1941, Assistant General Superintendent of the plant in 1946, and General Superintendent in 1948, serving in that capacity until his transfer in 1957 to Lorain Works of the Division as General Superintendent. His address is 210 Euclid Ave., Lorain, Ohio.

Kenneth Joynt Director Of Canada Mobil Oil

Kenneth R. Joynt '43, has been elected a Director of Mobil Oil of Canada Ltd. He was also named Vice-President and Manager of Producing for the Calgary-based affiliate of Mobil Oil Co. Mr. Joynt is currently Operations Superintendent for the Houston Exploration and Producing Division of Mobil Oil.

In February 1946, he joined Magnolia Petroleum Company, Mobil's former southwestern affiliate. During the past thirteen years Mr. Joynt has served in various technical and supervisory positions with Magnolia and later with Mobil, following the former's merger into its present parent company in 1959. His assignments included work in the Kermit, Kalfurrias, Vanderbilt, and Midland Districts of Texas, in Lake Charles, Louisiana and as Assistant Division Superintendent in Oklahoma City, Morgan City, Louisiana and Houston, Texas.

He headed Magnolia's extensive ex-

ploration and producing program in the South Texas and Gulf Coast area as Division Superintendent until the merger into Mobil Oil when he was named Operations Superintendent over an expanded division with headquarters at Houston.

Powell A. Dennie Attends Shell Management Course

Powell A. Dennie '40, will attend the Shell Management Course from April 3 to 29, at the Arden House campus of Columbia University, about fifty miles north of New York City. Dennie, who is Roswell Division Production Manager



Powell A. Dennie

for Shell Oil Company's Midland Area, will be among 30 managers from Shell Oil Company and its affiliates in the United States and Canada who will participate in four weeks of intensive study.

The course is designed to provide broader understanding of economic, political and social trends effecting industry, modern management practices and Shell's objectives and policies. Course instructors are Shell's top executives and such authorities as professors, government representatives and business leaders. Over 200 Shell executives have attended the course since it began in 1956.

After graduation Powell started to work for Shell as an engineering trainee in Tulsa, Oklahoma. After his discharge from the service as a Naval Aviator in

1946, he worked in varying increasing responsible jobs for the concern in Kansas, Illinois, Oklahoma and North Texas. In 1956 he was assigned to the Company's Head Office in New York and after a brief assignment in The Hague, Holland, he went to Roswell, New Mexico, as Division Exploration Engineer. He was promoted to his present position in 1959. He holds various offices in teh New Mexico P.I.C. and is Chairman of the Executive Committee to the New Mexico Oil and Gas Engineering Committee. He is married to the former Pat Herring of Kirkwood, Missouri. The couple are active in the affairs of St. Andrews Episcopal Church in Roswell.

Harry Smith Gets Top Westinghouse Award

Harry B. Smith '42, was one of three who were honored by the Westinghouse Electric Corporation's Engineers' Week observance held in the Baltimore (Md.) Coliseum and attended by 1,400 management and professional personnel of the company's Air Arm Division.

Mr. Smith was awarded \$5,000 for his contribution to the development of a new radar technique. This was the top award and presented for his work on two important inventions. The development and advancement of airborne "pulse doppler" radar technique used in missile guidance makes possible the use of a single radar antenna for both the transmission and reception of long-range signals, whereas conventional systems require two antennas. Although the "pulse doppler" principle is not new, it was announced that the Westinghouse system is the only apparatus in production. The special patent award part of the Westinghouse voluntary invention award plan, is the highest patent award the company makes.

Mr. Smith is now manager of development engineering at the Air Arm Division in Baltimore. He joined Westinghouse in 1952 and in 1953 was made supervisor of the Missile Radar Group. From 1956 to 1959 he was manager of the weapons system section. His responsibilities now include all development work on radar, computers, fire control infra-red and weapon systems for airborne and space applications.

Harry, his wife Dorothy, and four children live at 1617 Park Avenue, Baltimore 28, Maryland.

March April 1960

Dr. Murphy to Work With Pan-American Institute

Dr. Raymond E. Murphy '23, professor of economic geography at Clark University, Worchester, Massachusetts, has been appointed a member of the Committee on Urban Geography of the Pan-American Institute of Geography and History. The appointment was made by Fabio de Macedo Soares Guimaraes of Rio de Janiero, Brazil, president of the institute's Commission on Geography. Dr. Murphy will work on a committee chaired by Angel Rubio of Panama.

A faculty member at Clark since 1946 Dr. Murphy is a nationally recognized



Dr. Raymond E. Murphy

specialist in the fields of urban and economic geography. He also is editor of the quarterly magazine, "Economic Geography," published at Clark for more than a quarter of a century. Dr. Murphy was formerly professor and head of the Department of Geography at Pennsylvania State College. He has authored numerous books, bulletins and articles.

In 1945-46, Dr. Murphy was one of four scientists from the University of Hawaii to make a three week airplane reconnaissance of Micronesia and, in 1947, he spent three months in the eastern Caroline Islands for the U. S. Navy Department and the National Research Council. Dr. Murphy is also an authority on the characteristics of central business districts of American cities.

Crookston Honored By Ceramic Society

James A. Crookston, who received his B. S. and M. S. degrees in Ceramic Engineering in 1942 and 1947, respectively, received national recognition in the ceramic field when he was made a Fellow of the American Ceramic Society in a ceremony opening the scientific society's 62nd Annual Meeting.

Dr. Crookston has developed and introduced into production a super duty silica brick for A. P. Green Fire Brick Co., where he is Manager of New Products Development. He is responsible for designing and equipping A. P. Green's new research center and for the development of a complete line of basic refractories, designing a plant for their production. Dr. Crookston has written a number of important technical papers, which have received nationwide attention, on his extensive ceramic research.

The honor of Fellow of the American Ceramic Society is awarded in recognition of broad productive scholarship in ceramic science and technology or conspicuous achievement in ceramic industrial fields.

More than 2500 ceramic scientists, plant operators, and engineers gathered in Philadelphia for this 62nd Annual Meeting of the Society, the largest ceramic meeting in the world.

Room and Board Go Up At MSM Residence Halls

An increase of \$30 per year in the cost of living at MSM Residence Halls was approved by the Board of Curators at a recent meeting. The increase includes the raising of the room rent from \$190 per year to \$200 per year and the cost of board of \$430 per year to \$450 per year. The increase will be effective for the academic year of 1960-61.

Jack Wilson, Housing Manager, has stated the applications and contracts for the next year will be accepted beginning April 15, 1960. Preference will be given to Missouri residents until June 15, after which applications will be accepted from non-residents, in the order of receipt of applications and advance payments.

Last year, the Residence Halls were filled to capacity by July 1. There were a few cancellations thereafter which permitted some late registrations to find accommodations.

Dr. Paul Ramdohr, Noted Professor of Geology At Heidelberg, Lectures on MSM Campus

Dr Paul G. K. Ramdohr, eminent professor of mineralogy of the Mineralogical Institute of the University of Heidelberg, was guest lecturer in the Department of Geology at MSM March 21-25, under the sponsorship of the American Geological Institute.

Dr. Ramdohr is currently touring eight major universities in the nation. His lectures emphasize the geology of some of the largest sulphide-type deposits. The latter have similarities to the large lead and zinc deposits of Missouri. Dr. Ramdohr's books on mineralogy and one mineralogy have gained his world wide fame.

His book, "Die Ermineralion Und Ihre Verwachsungen" is being trans-



Dr. Paul G. K. Ramdohr

lated into English by a group of 18 geologists from three continents according to Dr. Paul Proctor, Chairman of the Geology Department, MSM. These books, together with numerous scientific papers and articles, make him one of the world's leading authorities in his field.

During his stay at MSM, Dr. Ramdohr presented three stimulating and interesting talks. The first of these was given on Monday, March 21, "Comparison of Widwatersrand-Blind River-Dominion Reef - Serra de Jacobina." The second and third presentations were on Thursday, March 24. The subjects were "Observations on Sulphide Sediments" and "Rammelsberg-Harz Mountain Sulphide Deposit."

The talks were well attended by the staff, students and guests whose total number averaged 75. Dr. Ramdohr also had the opportunity on Tuesday, March

22 and Wednesday, March 23, of visiting the southeastern Missouri lead zinc and barite mines. Friday morning was spent in conference with staff and students.

Like other geologists, Dr. Ramdohr is widely travelled. He has conducted research in Australia, South Africa Northern Africa, Canada and Scandinavia. Many of his papers are based on these expeditions. Though nearly 70 year of age, Dr. Ramdohr continues a very active life in both travel and research. His plans call for approximately four months in the United States. During his stay, he will visit many areas of geologic interest as well as confer with government scientists before returning to Europe.

Hercules Powder Co. Plans New Grants to Education

The Hercules Powder Company has announced another Aid to Education program. The new program is a system of matching grants to supplement other forms of aid to education carried on by the company.

Under the program the company will match, dollar-for-dollar, contributions made by its employees to any accredited college or university, up to a maximum of \$1,000 for any employee in any calendar year. The primary purpose of the program is to broaden the base of Hercules' aid to education. At present, science and engineering schools are principally considered under their Grants-in-Aid Program.

The new Matching- Grants Program will result in giving support to liberal arts colleges as well. A further purpose is to stimulate among Hercules employees a greater awareness of the value which their gifts have to the schools of their choice. The broadest possible participation of employees is sought with the hope to encourage annual contribution.

No college graduate fully pays for his education during his years in school. As he progresses in his vocation, his success must be attributed partly to the quality of his training. By that premise, an alumnus owes some of the financial reward he earns to the educational institution which helped develop his capacity to work.

Rex Williams President Of Rolla State Bank

Rex Z. Williams '31, has been elected president of the Rolla State Bank. His election fills the vacancy resulting from the death of his father, E. D. Williams, late president of the bank who died February 20, 1960.

Rex has been executive vice president of the bank since 1952, and he was a member of the Board of Directors for ten years before that. He received his B. S. degree at MSM, his Master's degree at the University of Wisconsin and he did graduate work at the University of Michigan. He was a member of the MSM faculty from 1931 to 1952 and left the position of Associate Dean in 1952 to join the bank's staff. He has been active in civic affairs, having served as a member of the Rolla Board of Aldermen, President of the Chamber of Commerce, President of Rolla Rotary Club, and Governor of District 197 Rotary International; currently he is Chairman of the Board of Trustees, Phelps County Memorial Hospital; Chairman of Rolla Police Personnel Board; Treasurer, First Presbyterian Church of Rolla, and a Director-at-Large, Missouri School of Mines Alumni Association.

Rex and Marian have two sons, John, a freshman at the University of Missouri and Mark, a freshman at Rolla High School.

Eva H. Greene Director of Aptitude Testing Service

Eva Hirdler Greene '11, is listed in the recently issued directory of membership of "The Society of Women Engineers." She carries the distinction of Professional Engineer and Human Engineering Specialist. She is Director of the Eva Hirdler Greene Aptitude Testing Service, 215 South Hamilton Drive, Beverly Hills, California.

Mrs. Greene made an outstanding success as one of the earliest women engineers of the country and, in recent years, gave up her successful career in petroleum geology to carve out a new career in vocational guidance and aptitude testing. She is a much sought after speaker before social and business groups.

PROJECTING PRESENT PATTERNS In Chemical Engineering and Chemistry at MSM

By Dudley Thompson, Chairman, Department of Chemical Engineering

Recently it was necessary that a report be prepared concerning the present status of the Department of Chemical Engineering at MSM. Problems facing this department within the near future and for the coming decade were delineated also. Mr. Paul T. Dowling, President of the MSM Alumni, saw a copy of this report and asked the Department Chairman to adapt this report for publication in the "MSM Alumnus." It is a pleasure for the author to comply with this request.

Obviously, no one department can evaluate itself or make plans for itself without taking cognizance of the framework within which it operates. That framework, of course, is the University of Missouri and its largest component, the Missouri School of Mines and Metallurgy.

The University of Missouri, the first state university west of the Mississippi River, was created by the General Assembly on February 11, 1839, two days after the act establishing the public school system was approved. The University became the first state university

established in the Louisiana Purchase territory, acquired by the United States during the administration of Thomas Jefferson. The form of organization of the New University was influenced to a large degree by the philosophy of Jefferson, a vigorous advocate of public higher education.

The purpose of the University today is three-fold: teaching, research and service. The University has come to be a living force that extends beyond the

campus and its teaching and research program. In the Biennial Report of 1932 the Curators of the University stated the purposes in these words: "A true state university strives to be the intellectual, the cultural, and the professional center of the state. It is not merely a school; it is a community of scholars and learners engaged in the forward-looking enterprises of modern civilization."

Modern civilization has developed at

TABLE I
COMPARISON OF MSM AND CHEMICAL ENGINEERING ENROLLMENT
AND B. S. DEGREES FROM 1929 TO 1960

Year	MSM	Ch. E	MSM	Ch. E
29-30	553	63	63	2
34-35	415	67	83	12
39-40	897	111	153	17
44-45	307	52	50	13
49-50	2710	249	870	77
54-55	1631	165	223	17
59-60	3002	271	660*	57*

* Estimated

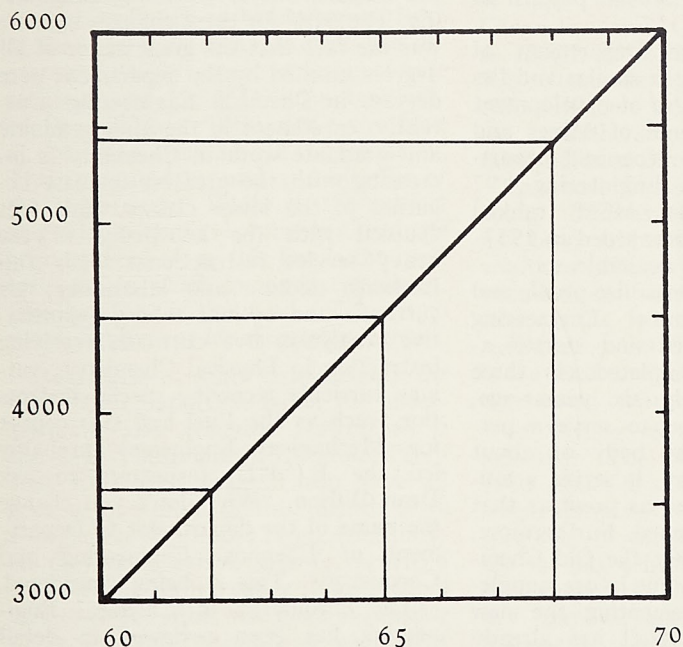


FIGURE 1 — Projected Growth of Missouri School of Mines and Metallurgy from 3,000 students in 1960 to 6,000 students in 1970 assuming a constant rate of growth. Enrollments in 1962, 1965, and 1968 are indicated.

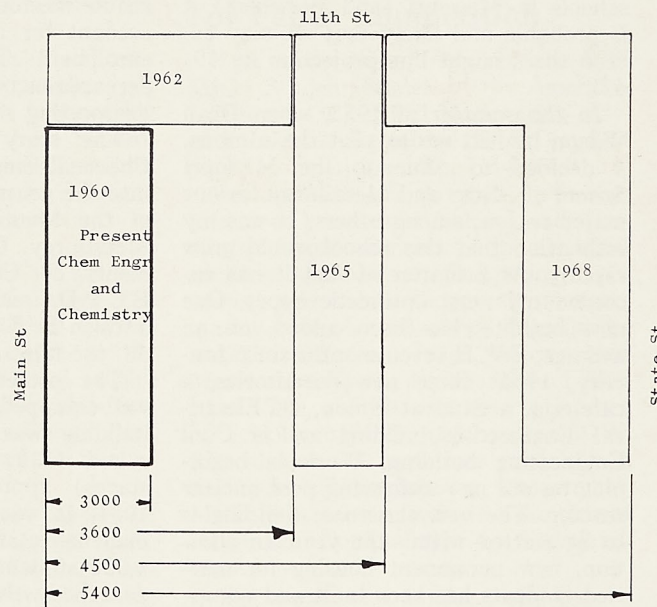


FIGURE 2 — Estimated minimum space requirements for Chemistry and Chemical Engineering for Projected Growth in MSM enrollment from 3,000 (1960) to 6,000 (1970). Three proposed additions are indicated. The 1962 addition is actually needed in 1960, etc. The dates (1962, 1965, 1968) indicated are critical dates at which required space, including space, will limit effective instruction.

an ever increasing tempo, based firmly upon modern applied science and engineering. The Missouri School of Mines and Metallurgy, founded in 1870, has developed into a leading technical school specializing in engineering and applied science. Prior to World War II emphasis was given to the "earth" sciences and engineering. Since World War II the pattern of enrollment and instruction has approached that of the United States of America as a whole. During its first ninety years (1870-1960) the Missouri School of Mines and Metallurgy attained a permanent annual enrollment of approximately 3,000 students. During the final decade (1960-1970) of its first century, it is conservatively estimated that this school will double its present enrollment (3,000 to 6,000). In line with the forward-looking attitude of the Board of Curators it is necessary that each component of the University plan well and develop dynamically if it is to meet the challenge of modern civilization. Figure 1 shows the anticipated growth of the Missouri School of Mines and Metallurgy in the 1960's as a straight line projection. From the enrollment figures of students now known to be in high schools in Missouri (and elsewhere) it is probable and likely that we may exceed the straight line projection by 1962.

In the summer of 1955, when Dean Wilson invited me to visit the campus, I decided to come to the Missouri School of Mines and Metallurgy for one major reason, among others. It was my estimation that this school would grow rapidly. As a matter of fact it has exceeded my most optimistic hopes. One new building has been added, on an average, EACH seven months since January, 1956: three new dormitories, a cafeteria, a Student Union, an Electrical Engineering building and a Civil Engineering building. Work is beginning on our new swimming pool nuclear reactor. The new classroom building is to be started within the year. In addition, new permanent housing for married students has been built and occupied. The new digital computing center was opened March 1 and is now in operation. Plans are under way to obtain a large analog computer to complement and supplement the digital. It is my guess that the end is not in sight yet with respect to the growth of the physical plant and facilities of the Missouri School of Mines and Metallurgy. To the contrary as growth continues, needs

will increase and will have to be met if MSM is to fulfill its destined objectives, which appear to become broader and more clearly defined as each day passes.

With respect to enrollment, during the past two years most other schools of engineering and applied science have DECREASED 5 to 6 per cent per year. For each of these two years the Missouri School of Mines and Metallurgy has INCREASED by a similar amount each year. It is interesting and revealing to note that more than three-fourths of all degrees granted by the Missouri School of Mines and Metallurgy have been awarded by Dean Curtis L. Wilson since he became the administrative head of the school in 1941. Of 111 E.C.P.D. recognized schools MSM ranked 19th in enrollment in 1959.

During March most of the degree-granting departments were inspected for accreditation by the Engineers' Council for Professional Development. One of the verbal questions asked Dean Wilson was "Why don't you change the name of the School?" This question stemmed logically from the fact that current enrollment figures revealed that the Mechanical, Electrical, Civil and Chemical engineering departments constitute the four largest in that order and account for about 70 per cent of the enrollment. This distribution and order approaches the national pattern in engineering schools.

The story of the Department of Chemical Engineering is similar and fits into the general pattern of development of the Missouri School of Mines and Metallurgy. Of 113 recognized departments of Chemical Engineering (97 E.C.P.D. accredited) MSM ranked 13th in B. S. degrees awarded in 1957-58, the latest figures available.

The present modern fire-proof and well-equipped Chemical Engineering building was designed and started around 1939 and completed (in three stages) approximately six years ago, 1954. It was planned to serve a permanent total student body of about 1,000 students. Today, it serves a student body three times as great as that for which it was planned. Furthermore, it was anticipated that the Old Chemistry Hall would continue in use, supplementing and complementing the new building. Chemistry Hall has already become obsolete in part and it is only a matter of a relatively short time until it will no longer be possible to use it at all. Two offices, two laboratories, a special classroom, and some six stockrooms and

storerooms in Chemistry Hall make it possible for the new Chemical Engineering building to operate well beyond its rated capacity and essentially at its saturation point. During the fall semester, 1959, a committee composed of members of this department made a detailed study of the physical facilities of the department. In light of present requirements, it was shown that there is an immediate need for an extension to the present building. In light of the projected growth of MSM it was shown that two additional extensions would be required within the current decade. For these three proposed extensions it is estimated that facilities will become critical with respect to effective instruction unless they are obtained for use in 1962, 1965 and 1968, respectively. Figure 2, Projecting Present Patterns in Chemical Engineering and Chemistry, graphically relates dates, enrollment and facilities for this department.

Still another factor is developing and assuming new importance. The Department of Chemical Engineering is, in fact, a combined department of Chemical Engineering and Chemistry. Originally it was a Department of Chemistry. In the mid 1930's its name was changed to the Department of Chemical Engineering and Chemistry. Near the close of the 1930's the name was changed to the Department of Chemical Engineering. The basis for these changes in name was the fact that the great major of all degrees granted by the department were degrees in Chemical Engineering. Currently, enrollment in the undergraduate and graduate work in Chemistry is increasing with the greatest increase occurring in the lower classes. This fact coupled with the knowledge of the heavy service instructional loads (all freshmen, lecture and laboratory; six curricula and options taking Quantitative Analysis; five curricula receiving instruction in Physical Chemistry; various curricula receiving special instruction, such as the Fuel and Gas course for Mechanical Engineers) probably led the E.C.P.D. inspectors to ask Dean Wilson, "Why don't you change the name of the department to Department of Chemical Engineering and Chemistry?" This is being considered.

The enrollment in Chemical Engineering has been reviewed in detail since this degree was first authorized about the time of World War I. Since the mid 1920's a fairly clear pattern of enrollment for Chemical Engineers has become evident. Table I shows the com-

parison of MSM and Chemical Engineering enrollment and B. S. Degrees granted at five-year intervals from 1929 to 1960. In general, this table is representative of the growth of MSM and the Department of Chemical Engineering. During this period, the Department of Chemical Engineering accounted for 11.7 per cent of the enrollment at MSM, 12.9 per cent of all B.S. degrees. With respect to the current academic year, there were 271 chemical engineers and 35 chemists (total 306) seeking degrees in this department in the fall, of which there were 57 chemical engineers and 2 chemists in the senior class.

In the fall of 1956 the University of Missouri was petitioned for permission to offer the Ph.D degree in Chemical Engineering. This permission was granted in December 1956. Currently, there are six students at various points in their doctorate program. Two of these are scheduled to complete their requirements in 1961. Mr. James W. Johnson has been granted a NSF Cooperative Fellowship for his final year of study. During his Master's program he was recipient of an AEC Fellowship, the first at MSM under its current AEC Nuclear Engineering program. Mr. Arliss V. Martin has been recommended for a Shell Fellowship to complete his final year of work on his doctorate. Both of these men are instructors in the department. With respect to the doctorate program, the E.C.P.D. inspectors asked Dean Wilson, "Why don't you have a doctorate program in Chemistry?" This is desired by and an objective of the Department. While on the subject of graduate studies, probably the single greatest need along this line is the need for space in which to conduct research. Closely allied is the need for funds to secure equipment for research programs.

Regardless of other requirements, the single most important factor for undergraduate and graduate instruction is the staff. The Board of Curators, President Ellis and Dean Wilson have all been of one mind in this regard. With a singleness of purpose rarely encountered they have raised salaries, provided an excellent retirement system, secured insurance and otherwise made it possible to secure and maintain a competent faculty.

The faculty of the Department of Chemical Engineering is composed of twenty members almost equally divided between the disciplines of Chemistry

and Chemical Engineering. Represented in this group of twenty staff members are the following academic degrees: 1 Bachelor of Philosophy, 18 Bachelor of Science, 2 Bachelor of Arts, 1 Master of Arts, 14 Master of Science, 11 Doctor of Philosophy and 1 Doctor of Science, a total of 48 academic degrees. In addition three staff members are candidates for the Master of Science and four for the Doctor of Philosophy degrees.

Included in the fields of specialization (excluding required courses) of the Chemistry faculty members are the following: Nuclear Chemistry, Colloidal Chemistry, Chemical Thermodynamics, Quantum Chemistry, Chemical Kinetics, Instrumental Methods of Chemical Analysis, Advanced Inorganic Chemistry, Protective Coatings, High Polymers, and Corrosion.

Included in the fields of specialization (excluding required courses) of the Chemical Engineering faculty members are the following: Petroleum Refining, Reaction Kinetics, Fluid Dynamics, Distillation, Extraction, Absorption, Industrial Instrumentation, Applied Ultrasonics, Application of Computer Techniques to Chemical Engineering Problems, Advanced Chemical Engineering Plant Design and Chemical Engineering Economics.

Although a number of selected items of data concerning the disciplines of Chemistry and Chemical Engineering as taught at MSM have been recited, these items do not in themselves provide sufficient information to delineate the breadth, scope and importance of these fields of discipline.

Lawrence Lessing writes in his new book, "Understanding Chemistry," "It has been said that, among all the revolutions affecting human life in the twentieth century, the chemical revolution is the most pervasive and far-reaching. . . Yet the chemical revolution is the least understood of all the revolutions going on around us."

In writing of the "Great American Scientists: The Chemists" in the April, 1960 issue of *Fortune*, Lessing challenges chemists in these words, "In the spectrum of physical sciences, chemistry in this century has been merging ever deeper on the one hand with the new physics, and on the other with biology. It is now plain that chemistry holds the key to the life sciences, as well as the master key to industrial power."

However, Lessing cautions, "It is too easy—and dangerous—to be dazzled

by the great size and material power of the \$23 billion U. S. chemical industry, or by the same \$10 billion a year the U. S. is currently spending on something called research and development, only a little more than 5% of which is going to truly basic science, the rest to technology . . . the ultimate, and dangerous, paradox. . . is that all chemistry's useful products, massive industry and national power rest on a few intangible ideas pursued by men with no views of immediate profits but simply to satisfy their wonder, curiosity, or desire to add to human understanding."

The Department of Chemical Engineering (and Chemistry) at MSM has a unique opportunity, such as does not exist on many campuses, to utilize BOTH THE SCIENCE AND TECHNOLOGY of chemistry in its teaching, research and service within the context of "the forward-looking enterprises of modern civilization" defined by the Board of Curators. It is to this end that plans are being made and efforts directed in the MSM Department of Chemical Engineering.

AIEE Student Branch Host For Paper Competition

This year the Missouri School of Mines Student branch of the American Institute of Electrical Engineering served as host for the annual district student paper competition. The institute promotes and sponsors these paper presentations as a means of training and stimulating future members of the electrical engineering profession. Competing in the contest were outstanding students representing colleges and universities in the states of Arkansas, Texas, Kansas, New Mexico, Louisiana, Oklahoma and Missouri. The contestants were welcomed at a "kick-off" banquet by Joseph W. Rittenhouse '49, a former professor in the Electrical Engineering Department, MSM, who is now technical director of H-Voltage Equipment Co., Cleveland, Ohio.

The award committee consisted of five technical men from various industrial firms in the St. Louis area with Mr. D. K. Howell of Westinghouse Electric Corp., heading the group of judges. The award of twenty-five dollars and a trophy commemorating the event was won by a contestant from Texas A & M College, College Station, Texas. He will represent the district in the finals at the national contest.

Student's Paper Wins Area, Regional Prizes

Douglas Kline, a senior student at MSM, whose home town is Waukegan, Illinois, has been earning money as a public speaker at a rate that would make a professional jealous. It is doubtful that his services will be in great demand as an after-dinner speaker since his present rate of monetary reward is a staggering \$200 per hour.

An interest in motorcycle hill climbing and other types of racing led to his investigation of the fuels used and the proportions in which they will provide the greatest performance potential. After extensive experimental test work in the Mechanical Engineering Laboratories, he prepared a paper for competition in various student paper contests on a local and regional basis. His first venture into competition with students from other campuses came when he presented his paper "Competition Fuel Testing on the CFR Engine" to the St. Louis Section of the Society of Automotive Engineers at their Annual Student Paper Night.

Doug won first prize in this competition featuring six speakers from two schools. His personal reward was a check for \$50.00. This along with papers presented by John Wake and Gene Scofield enabled MSM to retain possession of the traveling banner for another year. The banner hangs in the Mechanical Engineering Department office.

After this warm-up Doug worked hard to improve both the material and its presentation for the Annual Regional Student Conference of ASME, Region VI, Southern Tier, held this year at Iowa City, Iowa, with State University of Iowa as host. The schools represented at this event were: Bradley U., Northwestern U., U. of Notre Dame, Purdue U., Rose Polytechnic Institute, State U. of Iowa, U. of Ill., U. of Kentucky, U. of Mo., Valparaiso U., Washington U. and MSM.

Against the fine competition provided by these schools, Doug presented his paper in such an outstanding way as to carry the votes of the judges and win first prize. This victory afforded a check of \$50.00 to Doug along with an expense paid trip to Dallas, Texas in June to present his paper before the semi-annual meeting of the American Society of Mechanical Engineers in competition with universities from other

Tax-Saving Ways to Support Your Alumni Association and MSM

Annual Contributions to the Alumni Fund

Gifts of Stock to the Association

Bequests under the terms of your will

Gifts of life insurance or annuities

Your Association is a tax-free charitable organization incorporated in 1946 under Article X, Chapter 33, of the Revised Statutes of Missouri of 1939. As such your Association can properly receive money, stocks and bonds, or property through the methods listed above. A card or letter to the Alumni Office, Rolla, will bring you a copy of the Association Constitution and By-Laws, for your use in discussing with your legal or financial advisor ways of tax-free support to the Alumni Association and through it, your School.

Regions. A plaque commemorating this win has been appropriately engraved and hangs in the Mechanical Engineering Department.

Dr. Clark Is Speaker At Coal Convention

Dr. George B. Clark, Chairman of the Mining Department, MSM, will be one of the featured speakers at the 1960 Coal Convention which is the annual meeting of the coal mining industry, and was being held in Pittsburgh, Pa., May 8-11, 1960. Dr. Clark spoke on recent developments in blasting over-burden with ammonium nitrates. Dr. Clark has done extensive research in this field in recent years.

Dr. Planje Presides at National Ceramic Meeting

Dr. Theodore J. M. Planje '40, Chairman of the Department of Ceramic Engineering, MSM, presided at the 62nd Annual Meeting of the American Ceramic Society in Philadelphia, Pa., April 24 to 28.

Dr. Planje is president of the Society's Ceramic Educational Council and assisted in planning of the entire program for the Annual Meeting.

This meeting attracted 2700 ceramic scientists, plant operators, engineers and educators. The ACS with 7500 members and subscribers in 47 countries, is a national organization devoted to the improvement of ceramic materials, pro-

cesses and products. More than 250 papers were presented at the meeting which will aid the advancement of the industry through the exchange of scientific and technical information.

The ceramic field which manufactures such essentials as brick, tile, glass, bathroom fixtures, spark plugs and hundreds of other items made by the ceramic process produces more than \$7 billion worth of goods annually.

Science Fair Held On Engineers Day

The fourth Annual South Central Missouri Science Fair sponsored by MSM and the Rolla Daily News, and the annual Engineers' Day were jointly held on the MSM campus April 14. This attracted 2,500 students to the campus and seventeen high schools participated in the Fair. There were some 80 exhibits on display in Jackling Gymnasium.

The first grand prize was awarded to Michael Johnson, 16, from Lebanon High School for his missile display entitled, "Research in Rocketry." His classmate George A. Kastler, 16, won the second grand prize. Both winners will receive a trip to the National Science Fair in Indianapolis, Indiana, where they will display their winning entry in national competition.

Professor G. G. Skitek '43, general chairman of the committees, reported that the Fair and Engineer's Day were outstanding in exhibits and attendance compared with former years.

For
tions li
Leon E
souri.
MET
General
milling
pit mi
Mexico
CHE
ment in
research
ENG
ing an
assist
Connec
partmen
SAL
Chemic
28 to 3
matic p
tal goo
in St. L
ENG
medium
with fi
Need a
nies. R
Prefera
neering
ment i
Good
Should
tial cal
MSM
Wins
The
Americ
allergic
the win
bership
chapter
new st
chapter
by won
award
Nation
welcom
annual
New Y
accepte
student
The
three g
Metallu
zation
money
the num
obtaine
March

Engineers Wanted

For information concerning the positions listed below write Assistant Dean Leon Hershkowitz, MSM, Rolla, Missouri.

METALLURGICAL ENGINEER—General Superintendent of mining and milling operation. Knowledge of open pit mining and must speak Spanish. Mexico.

CHEMIST — In research department in St. Louis, Mo., plant. Organic research and micro-biological assays.

ENGINEER — With induction melting and metallurgical background to assist in melting alloys of uranium. Connected with process engineering department.

SALES ENGINEER — Degree in Chemical or Electrical Engineering. Age 28 to 35 with experience in either automatic process control or in selling capital goods to the process industries. Need in St. Louis and Chicago sales offices.

ENGINEER EXECUTIVE — A medium-sized manufacturing company with five separate plants and products. Need a chief engineer for five companies. Reports directly to the President. Preferably under 40 years with engineering degree. Record of accomplishment in the metal working industry. Good personality and appearance. Should be general manager or presidential calibre. Salary open.

MSM Student AIME Chapter Wins Membership Prize

The MSM Student Chapter of the American Institute of Mining and Metallurgical and Petroleum Engineers is the winner of the 1959 Student Membership AIME Application Contest. The chapter gained the largest number of new student members of any student chapter in the United States and thereby won the prize of \$100.00 cash. The award was made by Howard C. Pile, National President of the AIME at a welcoming luncheon at the time of the annual meeting of the organization in New York, N. Y. Dr. A. W. Schlechten accepted the award in behalf of the student chapter.

The Student Chapter is divided into three groups; Mining, Petroleum and Metallurgy. The officers of the organization have decided that the award money will be prorated according to the number of applications which were obtained by each group.

BIRTHS

Mr. and Mrs. Ronald D. Parsons '59, have a daughter born October 19, 1959. Their other child, Daryl Dean, is 3½ years old. Ronald is an air conditioning engineer with the Gas Service Co., Kansas City, Mo. Their residence is at 213 East 25th Street, North Kansas City, Mo.

Mr. and Mrs. James R. Lawson '60, announce the arrival of a son, James Robert, born, March 19, 1960, at the St. Mary's Hospital, DeKalb, Ill. Jim is with General Electric Co., Small Motor Div., as foreman-electrical maintenance. Their address is 1105 East Taylor, DeKalb, Ill.

Mr. and Mrs. Campbell Barnds '55 are parents of Paul Allan, born January 31, 1960. Their address is 8737 Larsen, Overland Park, Kan.

Mr. and Mrs. Robert B. Lyons '59, started their family with the arrival of Brian Robert, October 20, 1959, and they are residing at 606 South Court, Marion, Ill. Bob is a research engineer, Universal Match Company's armament division.

Mr. and Mrs. Donald C. Griffin '50, announce the birth of their third child, and first son, Douglas Jerald on May 7, 1959, at the Richardson House, Boston, Mass. Donald is still with Raytheon Mfg. Co. In June '58 Don received an Associates Degree in Electronics from Northeastern University in Boston.

First Lt. and Mrs. Joe E. Gray have their second son, born September 20, 1959. Lt. Gray is the C. O. of Co. "C" 864th Eng. (Hv. Cons.) Camp Walters, Texas.

Mr. and Mrs. Bill G. Beams '57, began their family with a daughter born July 3, 1957. She is Nancy Rae. The Beams reside on Route 2, Fairfax, Okla. Bill is a petroleum engineer with Texaco Inc.

Mr. and Mrs. James R. Paul '43, have their fourth daughter, Cynthia, born June 29, 1959. The father is general sales engineer, Dowell Division, Dow Chemical Co., Denver, Colo., located at 308 Mile High Center Bldg.

Mr. and Mrs. Jerry R. Ennis '58, announce the birth of a son, Danny, April 2, 1959. They are living in Morenci, Ariz., where Jerry is a mining engineer with the Phelps-Dodge Corp.

Mr. and Mrs. David E. Glenn belatedly announce the arrival of Cheryl Anne, April 28, 1959. David is with Westinghouse Electric Co., as a manu-

facturing engineer, and their address is 115 Ashwood Road, Springfield, Pa.

Mr. and Mrs. E. L. Dougherty, 1212 20th St., Rock Island, Ill., just now advised us of the arrival of twin boys born May 1959, bringing their family total to four girls and three boys. Eddie is a project engineer for Howard, Needles, Tammen and Bergendoff, Kansas City, Mo.

Mr. and Mrs. W. B. Lawler '42, have a new arrival, Mary Erin, born December 29, 1959. She just weighed 4.5 lbs., but is beautiful. The father is with Kaiser Aluminum and Chemical as product sales manager, in Oakland, Calif. He was transferred there within the past year from Chicago. The residence address is El Camino Tassajara, Diablo, Calif.

MARRIAGES

Thompson—Beasley

Bill J. Thompson '59, and Miss Paula Beasley were married December 22, 1959, in Charleston, Mo. Presently, Bill is with Douglas Aircraft Co., and working on the Thor-Able and the Thor Delta space project at Cape Canaveral, Fla. They are living at 1106 Mitchell, Cocoa, Fla.

Kruger—Hofer

William A. Kruger '59, and Miss Carole Hofer were married October 17, 1959. Bill is stationed at Ft. Leonard Wood, Mo., as a second Lt., address o/c. A, 5th Engr. Bn. C.

Kieffer—Neels

Alonzo Kieffer III, '59, and Joan Neels were married November 14, 1959. Their address is 6538 Marquette, St. Louis, Mo.

McCarthy—Edmunds

John M. McCarthy '55, and Miss Janis Edmunds, of Ferguson, Mo., were married November 21, 1959 and they are living at 1465A Waterford Dr., Wood River, Ill.

Almond—Barber

James E. Almond '58 and Miss Darlene Richlynn Barber were married January 9, 1960. Jim spent six months on active duty with the U. S. Army and was released November 11, 1959. Jim is now an electrical engineer with Magnolia Pipeline Co., Dallas, Tex. This is his second year with Magnolia. Their address is 2417 Abrams Rd., Dallas 14.

Daniels—Wagner

Leslie C. Daniels, '58 and Miss Carolyn Marie Wagner, daughter of Mrs. Milton Kaempfe, of Ellisville, Mo., were married November 14, 1959, at the St. John's Lutheran Church in Ellisville.

Les is with the technical division of Mobil Oil's East St. Louis, Ill., Refinery. The newly weds are living at 13 Hillcrest, Manchester, Mo.

Leisure—Le Poix

Harry B. Leisure '55, and Maryse Le Poix, of Paris, France, were married September 29, 1959. Richard has accepted a position with the U. S. Gypsum Co., as a mining engineer and is assigned to their plant at New Braunfels, Tex., and they are living at 180 North Seguin St., Apt. 5.

Puyear—Timmons

Robert B. Puyear '54, and Miss Donna Timmons, of Delphi, Ind., were married February 14, 1960, and their first home is at 712 S. Union, Kokoma, Ind. Bob is development engineer, Haynes Stellite Company.

Franke—Koenig

George E. Franke '58, and Luella Koenig were married February 21, 1959. George entered the service in March since May 1959. Lt. Franke is with the 92nd Engr. Bn. (Cons.). He is Exec. Officer, Mess Officer, Savings and Insurance Officer, Utility Officer, CBR Officer plus many more. They reside at 522A Oakridge Ave., Fayetteville, N. C.

DEATHS

Francis H. Conley

Francis H. Conley '27, was killed instantly in an auto collision near Baton Rouge, Louisiana, March 17, 1960. "Satch," as he was affectionately known to his many, many friends, was a partner in the Red River Construction Company, Shreveport, Louisiana, and had been to a contract-letting in Baton Rouge. This was one of his several business enterprises. Though a mining engineering graduate, most of his professional life was spent in the field of civil engineering. He served as a commissioned officer in World War II and saw action in the European Theater. He was active in professional societies and was a very loyal alumnus and a staunch friend of the School of Mines and the Alumni Association.

He leaves to mourn his untimely death, his widow, Ann, 7004 Gilbert Drive, Shreveport, a son, Patrick who just completed a tour of duty with the U. S. Army; and two daughters, Mrs. Kenneth J. Gereau, of Shreveport, and Kathy, a senior at Webster College, St. Louis, Mo.

Fred B. Beatty

Fred B. Beatty '29, associate profes-

sor of electrical engineering, University of Colorado, died at his home, December 21, 1959. He had been a member of the faculty since 1948. Prior to this he was at Colorado State since 1938 and previously at Georgia Tech. And it was from this school he received his Master's degree. He is survived by his widow, Eloise; a daughter, Mary Ellen, 15; his mother residing in Raymond, Ill., a brother, Ren, and a sister, Mrs. Earl Gerlach, Waggoner, Ill.

Horace A. Johnson

Horace A. Johnson '08, age 73, died January 13, 1960 in Van Nuys, California, following a cerebral hemorrhage. He was well-known in mining circles in the west, and was for many years manager of the Tonopah Mining Company, longest producing of the famed Tonopah silver mines. Survivors include his widow, a daughter, Mrs. William Spang of Kearney, Ariz., and a son Horace A. Jr., of Van Nuys.

Harry W. Lohman

Harry W. Lohman '04, passed away January 15, 1960 at Santa Barbara, Calif., where he had resided since his retirement from active business. He was born in New York City, September 11, 1882. He received his early education there and after his Bachelor's degree from MSM, he received a Master's degree from Columbia University. After graduation he gained much valuable experience in various jobs in East Tennessee and Old Mexico. He was married June 11, 1911 to Lillian Hungerford, daughter of a prominent New York family, who survives him. There were no children from this union. Following his marriage, "Harry" as many of his friends called him, worked in his profession continuously exploring and operating in many parts of North and South America. The last 23 years of his active life were with United Zinc Smelting Corp., of New York, operating mines in the Joplin Mining District and a smelter at Moundsville, W. Va.

He retired as president of this corporation January 1, 1944. Charles M. Schwab, of Bethlehem Steel fame, had the controlling interest in this company.

Alumni Personals

1912

Henry F. Adams has a new address: "The Samarkand", Santa Barbara, Calif. The Samarkand is a residence for retired people and Mr. and Mrs. Adams have been there since January

after returning from six months in Europe.

1917

Frederick P. Shayes, P. O. Box 5193, Corpus Christi, Texas, is completely paralyzed.

1922

Edwin G. Machin, 112 W. Lebanon St., Nashville, Ill., is general superintendent, J. B. Barter Construction Co., Harrisburg, Ill., heavy construction contracting.

Glen J. Christner, vice-president, Eagle Picher Co., Cincinnati, Ohio, "We are always looking for good engineers, MSM preferred."

1923

George G. Harris is now an invalid from a paralytic stroke in August, 1959. His address is 7116 Missaukee Park Dr., Lake City, Mich.

1925

James E. Stogsdill is extended our sympathy on the passing of Mrs. Stogsdill, in January. His address is 408 Calmosa, Whittier, Calif.

Horace W. Hodges and Mrs. Hodges were alumni office visitors in April. This was his first return to the campus since graduation. The Hodges were returning to Colorado from an extended trip through the south and Florida. Mr. Hodges is with the Colorado Fuel and Iron Corp., Pueblo, Colo., and has been in their employment for 35 years. Their Pueblo address is 203 Brentwood Drive. 1926

Hollis E. McBride is with R. B. Potashnick Construction Company, Johnson Bldg., Denver, Colo., and is project manager on the Dillon Dam.

Samuel E. Craig is now Assistant to the General Superintendent, Hidden Splendor Mining Company, Moab, Utah.

1931

Clyde E. Wilhite has returned to the Corps of Engineers after resigning in 1953 from the Southwestern Division, Dallas, Texas. During the past seven years he operated a Dude Ranch near Colorado Springs, Colo., and spent the past few years as construction engineer with the Headquarters, Air Defense Command, Colorado Springs. Presently he is Division Safety Engineer, Pacific Ocean Division, U. S. Army Corps of Engineers, Fort Armstrong, Honolulu, Hawaii which requires travel to Taiwan, Okinawa, Japan, Korea and Kwajalein and the Johnston Islands, where construction work is being handled by the three engineer districts in the Pacific

MSM ALUMNI PERSONALS

Ocean Division. He just completed a tour of the above locations which required 61 hours of flying time to cover approximately 13,800 miles. His address is 515 Lawelawe St., Honolulu 15, Hawaii.

John E. McCarthy, president of McCarthy Bros. Construction Co., St. Louis, Mo., and president of the Associated General Contractors of St. Louis, was named to the citizens committee that will screen candidates for school building commissioner in St. Louis. John's business address is 4903 Delmar Blvd., St. Louis.

1932

Lt. Col. Stuart L. Davis is again back among our alumni for whom we have their known address. Col. Davis is now assigned to the Air Staff of the U. S. Air Force in the Pentagon and his address is 305 Croton Drive, Waynewood, Alexandria, Va.

Col. John J. Livingston has a new address, Headquarters Utah Section, U. S. Army Corps, Fort Douglas, Utah.

James K. Richardson has joined Glover Associates (Canada) Ltd., 1425 Mountain St., Montreal 25, Quebec, Canada, and is vice-president and general manager of this management consulting firm.

1934

Richard J. Dobson, with Shell Oil Company, has been on a foreign assignment since June 1958 and should return the middle part of 1960. His present address is c/o Bataafse Intl. Petroleum Mij., Pladju, South Sumatra, Republic of Indonesia.

1937

Peter F. Mattei, 1115 Ford Drive, Ferguson, Mo., has been promoted to the position of assistant to the executive director of the Metropolitan Sewer District. William Q. Kehr, MSM '33, is the executive director. Mattei, who has served as Kehr's executive assistant in the classification service to the District for two years, has been given additional responsibilities in the unclassified service which will authorize him to coordinate the activities of MSD's engineering, maintenance and construction departments. Pete, a C. E. graduate, is a registered professional engineer and currently is serving as president of the St. Louis Section of the MSM Alumni Association. He came to the Sewer District from the Naval Air Station, Lambert Field, two years ago, where he served as assistant to the public works officer.

James A. Vincent is president of the Adams Equipment Company of Orlando and Miami, Fla. He is married and has two daughters. Their home address is 3721 Neptune Drive, Orlando.

Frank S. Millard was elected president of a newly organized technical organization in 1959. The Society of Professional Well Log Analysis is a technical non-profit organization for log analysts in the United States and foreign countries. The first annual meetnig and symposium on well logging will be in Tulsa, Okla., May 16 and 17. Technical papers on well logging and interpretation will be presented. Frank is with Humble Oil and Refining Co., Carter Division, Box 801, Tulsa, Okla.

1938

Frank N. Goodrich, supervisor of design engineers, Southern California Gas Co., is now residing at 10524 Tigrina Ave., Whittier, Calif.

1939

Jack R. Glatthaar has been appointed assistant director of industrial sales effective March 1, for Monsanto Chemical Company's Inorganic Chemicals Division at St. Louis, Mo., after serving as assistant director of agricultural sales for that division.

1940

John F. Reed has been elected executive vice-president and a director of Manning, Maxwell and Moore, Inc. He will continue as general manager of the Consolidated Ashcroft Hancock Division. He joined the company in 1944 and was named division manager in 1957. The company makes valves, pressure gauges, mechanical and electrical instruments, cranes and hoists.

1941

William H. Bourne, vice-president of the J. G. Moretti Co., Inc., general contractors, Miami, Fla., has been elected president of the Miami Chapter of the Florida Engineering Society for 1960. Previous to his election to president, he was secretary of the organization. He is also an active member of the Association of General Contractors and a past secretary of the Miami Chapter of the American Society of Civil Engineers. He served in the navy during 1942, 1946 and 1951, 1953. At present he is a Commander, CEC, USNR, and participates in the Naval Reserve as a Public Works Officer for the U. S. NRTC, Miami, Fla.

Clinton V. Newman has a change of address from Birmingham, Mich., to 166 Lanyon Drive, Cheshire, Conn.

Frank H. Mentz who is a consulting engineer with Westinghouse Electric Corp., has been transferred from Bloomfield, N. J. to the company's plant in Little Rock, Ark.

Floyd P. Smith is vice-president and general manager of Desert Pipeline Construction Co., 12326 Lakeland Rd., Norwalk, Calif. This is a new business venture for Floyd.

1942

Robert M. Duncan is with Pan American Petroleum Corp., 44 7th Ave., S. W., Calgary, Alberta, Canada.

Dr. Thomas R. Beveridge, State Geologist, Rolla, Mo., reports that he quit smoking in 1959, first time since he was five years old.

1943

Jack Fleischli, vice-president, Bay City Bearing Co., that has sales offices and warehouses in Long Beach and Los Angeles, Calif., advises that his company is opening a third office and warehouse in Santa Ana to cover the growing industrial area of Orange County. Jack's business address is 5275 Atlantic, Los Angeles.

Fred E. Drester, Head-Reliability and Components Engineering, Motorola, Inc., Phoenix, Ariz., presented a paper entitled, "Circuit Design Concepts for High Reliability" at the National Symposium on Reliability and Quality Control in Electronics, Washington, D. C. in January 1960.

R. L. Ehrlich is plant manager, Colgate Palmolive Company's Jersey City toilet articles plant. The Ehrlich family live in Wyckoff, 462 Ellis Place. There are two sons, John 14, and Steven 11, and the father remarks, "High School Algebra is rough."

1944

Walter J. Dean is with American Metal Climax, Inc., Denver, Colo., with residence at 4990 West Park Place, Denver 19.

1945

Roy H. Boyd has a change of address to 442 South Moore St., Denver 26, Colo. He formerly was at McCook, Nebr.

1946

R. P. Connett who has been with Jamacia Gypsum Ltd., Kingston, Jamaica, has been transferred to the U. S. Gypsum Company plant at Plasterco, Va., as Assistant Manager.

1947

Stephen P. Salarano has been promoted from territorial manager to

branch manager in St. Louis, Mo., for the Alloy Tube Division of The Carpenter Steel Co., Union, N. J. He is assigned to the company's branch warehouse at 3942 Laclede Ave., and will serve steel users in Decatur, Springfield, East St. Louis, Ill., Missouri, Kansas, Oklahoma, Colorado and the Texas Panhandle.

W. E. Van Ells, with U. S. Gypsum Co., and has been assigned at New Braunfels, Tex., as kiln superintendent, has been transferred to New Orleans, La., and is mill and kiln superintendent at the new assignment.

Marjorie Paul Lewis is now in Oakland, Calif., with her husband, Robert T. Lewis who is a graduate student working for his Ph.D. in solid state physics at the U. of California. Mrs. Lewis has had multiple sclerosis for ten years but is now working in the Ceramics Department at the university. She was a Ceramic Engineering graduate at MSM. Her address is 105 Hamilton Place, Oakland 12.

Paul D. Bennett joined Kerr-McGee Oil Industries, Inc., November 30, 1959, and he is division production engineer with headquarters at 929 17th Ave., S. W. Calgary, Alberta, Canada. He says he enjoys the excitement of the challenge of searching for and developing oil and gas production in a "frontier" area. He was formerly with the Atlantic Refining Co., Tulsa, Okla.

1948

Elliott Dressner is chief ore engineer Ore Div., Lone Star Steel, E. O. Germany works, Lone Star, Tex.

Joseph T. Hepp's new address is Av. Aconagua Lomas de Chapultepec, Mexico 10, D. F., Mexico.

Frank D. Hequembourg has been chosen as the City Manager of Charleston, Mo.

Woodrow McPheeters has a change of address to 1713 Riggs Place, N. W., Washington 9, D. C.

William A. Ellis is with Central Illinois Light Company, Peoria, Ill. Bill has acquired some extracurricular activities. First, he is a member of the Board of Education and secondly, he is personally building their new home which is expected to be completed in the near future. His present address is 4626 N. California Ave., Peoria, Ill.

Wilbern L. Weddle resigned from Thompson, Ramo, Wooldridge to join the lamp metals and components department of General Electric Co. He is assigned to their plant at Euclid, Ohio.

Address, 24375 Garden Drive, Euclid 23.

1949

Rupert E. Bullock is district structural engineer, Portland Cement Association, and resides at 1401 Whiting St., Memphis, Tenn.

Ray G. Kelly is with the Missouri State Highway Dept., residing at 10609 E. 80th, Raytown 33, Mo.

Dr. Daniel N. Miller, Jr., recently resigned from the Pan American Petroleum Corporation to accept a position as Senior Geologist with Lion Oil Company in Casper, Wyo. Dan has previously worked six years for Pan American as an exploration geologist; three years in Corpus Christi and Billings District Offices and three years in the Rocky Mountain Division Office in Casper, Wyo. The new job will involve the practical application of sedimentary petrology in oil exploration. His home address is 3144 Hamilton Way, Casper, Wyo.

Kermit G. Rowley, 809 E. Huntington St., Beeville, Tex., is Area Engineer, Mobil Oil Co.

Major B. W. Hager after three years with the Engineer Supply Control Agency, Maison Fort, France, has returned to the U. S. and is assigned as executive officer of the Louisville Engineer District. Mailing address P. O. Box 59, Louisville, Ky.

1950

Russell J. Judah has been transferred to Westfield, N. J. from Houston, Tex., by the Transcontinental Gas Pipe Line Corp. He was promoted to supervising engineer in charge of all engineering activities in the Northeastern United States. His address is 800 Franklin Ave., Westfield.

Paul A. Haas has moved to 5412 Palmetto Road, Knoxville, Tenn., from Oak Ridge, Tenn., where he is employed.

Philip (YoYo) Davidson is in pipeline heavy equipment sales in Tulsa. The Davidsons and their four children live at 5122 E. 29th St., Tulsa.

Irving Klaus has his own business manufacturing dental porcelain. He started in April, 1959, and thus far business is off to a flying success with indications of a fine future. The name is Ceramco, Inc., and is located at 34-35 56th St., Woodside 77, New York.

Richard E. Davis, chief supervisor, Coastal Chemical Corp., Pascagoula,

Miss., has charge of production of all fertilizer plants, all phosphoric acid plants, grinding, and all bagging and shipping. His residence is at 1313 Kingsherry, Pascagoula.

Robert C. Wood is an oil exploration geophysicist for Cities Service in Algeria. His address is B. P. 19, El-Biar (Alger) c/o Africa-Cities Service) Algeria. He has been on the assignment for over a year and expects to return to the U. S. in the spring of 1961.

Vernon S. Severtson has been with U. S. Gypsum Co., since July 1954. From graduation and until July 1954 he was a sales engineer with the Eimco Corp., Chicago, Ill. Presently he is mill superintendent at Sweetwater, Tex.

R. Norman Holme recently left his former position as Ass't. Chief Metallurgist for Maumico Hochschild and Cia and is now with Dow Chemical International Ltd., S. A., as their metallurgist and technical representative for the Latin America Area for mining chemicals. He will continue to reside in Lima, Peru and his address is Casilla 4899.

Robert T. Rose is a construction engineer for an electric utility in Chicago, Ill., and at present they are well on their way in the construction of a 325 megawatt generating unit. He lives in Hinsdale, Ill., 5524 Bruner.

Rolland L. Hardy, geodetic engineer with the International Corporation Administration is advisor to the Sudan Government particularly Sudan Survey Department. His mailing address is USOM American Embassy, Khartoum, Sudan.

1951

Dale E. Hirschfield recently accepted a position as District Manager with Columbus McKinnon Chain Corp., Mining Equipment Div., and have moved into their new home. Their mailing address is Box 98-A, Rt. 1, Bowling Add., Princeton, W. Va.

Walter A. Shulaw is now in Robinson, Ill., 811 North Howard St., having moved there from Lake Charles, La.

Clarence J. Moser is extrusion plant metallurgist Reynolds Metal Co., Phoenix, Ariz. His residence address is 6320 W. Orange, Glendale, Ariz.

Robert I. Zane is earthmoving engineer with Dean Machinery Company, Kansas City, Mo.

William B. Vose, 1244 Arizona, Gary, Ind., is metallurgical supervisor of tin

MSM ALUMNI PERSONALS

plate processing, Gary Sheet and Tin Mill. Bill and his wife, Roma, have two sons, Jimmy 5, and David 2.

William Q. Wenneborg is a mine engineer supervisor, International Chemical Co., Green River, Wyo. The Wenneborgs with their two children, Lisa 5, and Larry 3, live at 130 Willow, Rock Springs, Wyo.

1952

Walter H. Unger is now with Duval-Sulphur and Potash Co., 308 East Church St., Carlsbad, N. M.

1953

Robert R. Richter is an instructor in the Kemmerer High School, Kemmerer, Wyo., and resides at 502 Opal St.

C. C. Weng is assistant chief engineer and manager of production, Shiang Tai Iron and Steel Corp., Kaohsiung, Formosa, China. Dr. and Mrs. H. R. Hanley are the god-parents of Weng's daughter, Eleanor.

Philip J. Clarke, Canpet Exploration Ltd., 720 7th Ave., S. W., Calgary, Alberta, Canada, and his wife spent a six week holiday visiting England.

1954

B. T. Wycoff is appointed Manager-Engineering, under the Staff Executive-Product Planning and Engineering, International Operations Group Staff, Chrysler Corporation, Detroit, Mich. Wycoff joined the Chrysler Corporation upon his graduation from MSM. He attended the Chrysler Institute of Engineering and received the Master of Automotive Engineering degree in 1956, when he became a member of the Export Division Engineering Department. By experience and background he is well qualified for his new assignment.

1st Lt. Joe E. Gray returned to active duty with the U. S. Army Corps of Engineers and at present he is C. O. of Co. 854th Engr. Bn. (Hv Cons) at Camp Wolters, Texas. The Grays have added another boy to their family since our last contact with them. Their address is 446 Davidson, Wolters Village, Mineral Wells, Tex.

Bros. Robert E. Hanss, S. M., is at present teaching at Don Bosco High School 1170 W. Windlake Ave., Milwaukee 15, Wisc.

Tom R. Fuller, Gwen, Deborah and Wendy moved from Salt Lake City, Utah to 340 Van Buren St., Midvale, Utah. Last fall Tom assumed the duties

of Level Foreman at Kennecott Copper Corp's, Bingham Open Pit. Prior to the mine assignment, he spent a year and a half training in the Company's Utah Copper Div., learning the details of milling, smelting and refining copper.

1955

Arthur G. Baebler, senior assistant sales engineer in the Development and Training Division of Sales, Union Electric Co., St. Louis, Mo., received a Master's Degree in Business Administration from St. Louis University, February 7. He has been with Union Electric since 1955.

1956

Morton L. Mullins has joined the division engineering department of Monsanto Chemical Company's Inorganic Chemicals Div., at St. Louis, Mo., after serving on the Electrical Engineering faculty at MSM. Morton's address is 10912 Margate Hall, Bridgeton, Mo.

1957

Lloyd C. Laciny received his Master's degree at MSM in January '60, and accepted a position with Emerson Electric Co., St. Louis, Mo., as a thermodynamics engineer. His residence is 8 Whitney Court, Florissant, Mo.

James Trautwein, 125 Stockton Dr., Owensboro, Ken., is a design engineer Receiving Tube Dept., General Electric Co. The Trautweins have a new daughter, Susan, born February 11, 1960. And they also have a new home at their present address.

Elliott Kurzman has moved from Gainesville, Fla. to Scottsdale, Ariz.,

Patrick S. Couch, Lt. (jg) C. E. U. S. Navy, is the Navy's representative administering a \$14,000 exterior painting contract and a \$5,000 interior electrical rewiring contract since reporting to the U. S. Naval Hospital, Camp Pendleton, Oceanside, Calif.

James L. Mitchell is with Hutchens

HELP US KEEP YOUR ADDRESS CURRENT

If your address has changed, complete and tear out this slip and mail it immediately to MSM Alumni Association, Rolla, Mo. Thanks.

Name

My new address is

My Company or Business Is

And My Title Is

Here's Some News for the MSM ALUMNUS:

and Son Metal Products Co., Springfield, Mo., a design engineer. The move to Springfield was made last June and his address is 616 N. Oak Grove. The Mitchells have a two year old son, John Ellis.

1958

1st Lt. James Hoffstetter is back in the states after one and one-half years in Korea. He is attending a counter intelligence school for 14 weeks at Ft. Hollabird, Md., and then he will be assigned to a unit in Pittsburgh, Pa.

Don L. Mueller, Corps of Engineer, Kansas City District, is assigned to the Ft. Leonard Wood Project and is residing at 805 Ridgeview Road, Rolla, Mo.

David E. Thompson is on active duty with the Army and his present address is 5501 Birch Ave., Falls Church, Va. Lt. and Mrs. Thompson have two children, Vickie 2½ years, and Deborah 8 months.

2nd Lt. Richard E. Boyett participated with the personnel from the 572nd Engineer Company in Exercise Puerto Pine in Puerto Rico. The 18 day exercise was the largest peacetime airlift ever attempted. Lt. Boyett is regularly assigned as motor and maintenance officer of the company at Ft. Campbell, Ky. Before entering the army he was employed by the U. S. Steel Corp., Lynch, Ky.

Kaye Ed "Chub" Newton, Pamrick Villa, Apt. 23, Yuba City, Calif., is with the California Division of Highways.

Samuel W. Bailey, Ens. USNR, has a new address; Skiffes Creek Annex, Box 32, Naval Weapons Station, Yorktown, Va.

Lt. Kenneth R. Schultz has been transferred from Ft. McClellan, Ala.,

and his address now is 3669 Vivian Lane, Columbus. Ga.

Percy H. Crecelius left California and is back in Colorado Springs, Colo., with The Navigators. His address is P. O. Box 1861, Colorado Springs.

Clyde Wick is now in Franklin, New Jersey with the New Jersey Zinc Co.

Delbert E. Day received his Master of Science in Ceramic Technology, in January, from the Pennsylvania State University. He is continuing his graduate work for his doctorate at Penn State.

Ralph O. Young is with Sperry Electronic Tube Div., Sperry Rand Corp., Gainesville, Fla. There are two sons in the Young family, Doug 3, and Donnie 3. Residence address, 206 N. W. 21st St., Gainesville, Fla.

James H. Garrett, Jr. is now associated with E. A. Polumbus, petroleum consultants, Denver, Colo.

John O. Buchanan has been promoted to the rank of Lieutenant Colonel. He has been Associate Professor of PMST at MSM since June 1958. He entered the military service in May 1943 as a 2nd Lt. commissioned through ROTC at the Citadel in South Carolina. Col. Buchanan and his wife and their small son live at 1207 West 8th Street, Rolla.

1959

Joseph Reichert, employed by the Corps of Engineers, Memphis, Tenn., District has received a Traineeship in Sanitary and Hydraulic Engineering from the Department of Health and Welfare and is on leave without pay from the Corps. He will attend the University of Missouri this semester, work this summer and back to school again for the 1960-61 academic year.

Kenneth C. Adam is in design and

development at R. C. A.'s new west coast Missile and Surface Radar Div., Van Nuys, Calif. His address is 8422 Amigo Ave., Apt. 1, Northridge, Calif.

2nd Lt. Andrew S. Bara recently completed the four-week airborne course at the Infantry School, Fort Benning, Ga.

Gerald O. Selle received a certificate and a \$15.00 award for his suggestion regarding a simplified method of earthwork computations. Col. Charles B. Schweizer, District Engineer, U. S. Army Engineer Dist., St. Louis, Mo. where Mr. Selle is employed, made the presentation.



G. O. Selle and Col. C. B. Schweizer

Bobby J. Ingram is employed by the Phillips Petroleum Company in their chemical plant at Borger, Tex. His address there is 1411 C. Boyd Street.

2nd Lt. Rene A. Ryter recently completed the officer basic course at the Engineer School, Ft. Belvoir, Va. His training was in logistics, administration, building and airfield construction, and combat tactics and techniques.

Lee Shell has accepted employment with Grove Laboratories, Clayton, Mo., as analytical chemist and he has residence at 505 Paddlewheel Dr., Florissant, Mo.

Naomichi Ito is employed by R. C. A. in Van Nuys, Calif., and his address there is 350 Elm Ave.

Donald L. Trabue visited the campus in February. He is a construction engineer with the Sheffield Steel Div., Armco Steel Co. His home address is R. R. 2, Independence, Mo.

MSM ALUMNI ASSOCIATION

ROLLA

MISSOURI

TO