



Missouri S&T Magazine, November-December 1958

Miner Alumni Association

Follow this and additional works at: <https://scholarsmine.mst.edu/alumni-magazine>

Recommended Citation

Miner Alumni Association, "Missouri S&T Magazine, November-December 1958" (1958). *Missouri S&T Magazine*. 104.

<https://scholarsmine.mst.edu/alumni-magazine/104>

This Magazine is brought to you for free and open access by Scholars' Mine. It has been accepted for inclusion in Missouri S&T Magazine by an authorized administrator of Scholars' Mine. This work is protected by U. S. Copyright Law. Unauthorized use including reproduction for redistribution requires the permission of the copyright holder. For more information, please contact scholarsmine@mst.edu.

MSM Alumnus

MISSOURI SCHOOL OF MINES AND METALLURGY
ROLLA, MISSOURI

Governor Blair Homecoming Speaker



Seated behind Missouri's Chief Executive as he addressed MSM alumni and friends of the School in Parker Hall on November 1 are, left to right: Dean Curtis L. Wilson, Paul T. Dowling, '31, Milo N. BeDell, '23, Rex Z. Williams, '31, and on the right, Francis C. (Ike) Edwards.

President's Column

I AM WRITING THIS with memories still fresh in my mind of one of the most successful Homecoming Celebrations held by the M. S. M. Alumni Association. More than one thousand alumni returned for the two-day activities, which was, without a doubt, the largest number of alumni ever to return.

The interest and participation shown was encouraging to everyone, especially our Officers. They look to the year ahead with hope and confidence that 1959 will be a Banner Year for your Alumni Association.

November first was not only the date of our Annual Homecoming, but it was also the start of our new fiscal year. We fully realize that 1959 will be even more of a challenge than this past year, when continued progress was made in our alumni activities. Our goal of 2500 members, each contributing an average of \$10.00 or more into the 1959 Alumni Fund, was set by the Board of Directors of the Association. This goal is not impossible to reach when you consider that this past year the total contributing members was 2135, a new all time high. However, it will require concerted effort and your loyal support to successfully meet this challenge.

I would personally like to thank the members of the Board of Directors who took time from their busy schedules to attend the Annual Meeting in Rolla last month, and also congratulate them for the worthy program they adopted. They have shown their enthusiasm and willingness to work for your Association. In return, they ask your support, whether it be your financial aid or active participation in your local section affairs.

Again let me remind you that our big task for 1959 is to increase the number of contributors to the Alumni Fund. We must not only meet our goal of 2500 contributors, but we must exceed that number, if at all possible.

In behalf of your Directors and Officers, I wish to extend to you all Best Wishes for a most happy Christmas Season and a Prosperous New Year!

M. E. Nickel '38
President
MSM Alumni Association

MSM Alumni Association

OFFICERS

Term Expires

President.....	Melvin E. Nickel '38.....	International Harvester Co.	1959
		Wisconsin Steel Division 2701 East 106th Street Chicago 17, Illinois	
Executive Vice-President.....	Paul T. Dowling '40.....	1400 South 2nd St.	1959
		St. Louis 4, Missouri	
Vice-President Areas 1, 2, 3.....	S. Allen Stone '30.....	P. O. Box 28	1959
		Fort Wayne, Indiana	
Vice-President Areas 4, 5, 6.....	J. W. Stephens '47.....	Lee's Summit,	1959
		Missouri	
Vice-President Areas 7, 8, 9.....	Barney Nuell '21.....	3440 Wilshire Boulevard	1959
		Los Angeles, California	
Secretary-Treasurer.....	Leon Hershkowitz '41.....	1300 Powell	1959
		Rolla, Missouri	
Executive Secretary.....	Francis C. Edwards.....	MSM Alumni Association	
Editor, "MSM Alumnus"		Old Metallurgy Building Rolla, Missouri	

DIRECTORS AT LARGE

Mervin J. Kelly '14.....	463 West Street, New York 14, New York	1959
R. O. Kasten '43	6138 Manning, Kansas City 33, Missouri	1959
Rex Williams '31.....	504 East 5th Street, Rolla, Missouri	1959

AREA DIRECTORS

Area No.	Director	States Embraced	Term Exp.
1.....	J. Craig Ellis '38	New England, N. Y., N. J., East Pa., Dist. of Columbia, Md., Va., Delaware	1961
2.....	J. C. Salmon, Jr. '22	S. Ark., N. C., S. C., La., Miss., Ala., Ga., Fla.	1960
3.....	O. W. Kamper '35	W. Va., Ohio, W. Pa., Ky., Tenn., Ind., (Except Chicago Industrial Area)	1960
4.....	J. Walter Wallace '48	N. Ill., Chicago Industrial Area	1960
	18455 Stedhall, Homewood, Illinois in Indiana, Wisc., Mich., Minn.		
5.....	C. C. Palmer '40	S. Ill., E. Mo., N. Ark.	1961
	1641 Andrew Drive, St. Louis 22, Missouri		
6.....	Joseph E. Scally '31	Iowa, W. Mo., Neb., Kan., Okla.	1959
	P. O. Box 1655, Tulsa, Oklahoma		
7.....	Kenneth F. Anderson '42.....	Texas, Arizona, New Mexico	1961
	1114 Commerce St., Room 1909 Dallas 2, Texas		
8.....	Harvey L. Tedrow '11.....	Idaho, Montana, North Dakota,	1960
	Olin Hotel Denver, Colorado	South Dakota, Wyoming, Colorado, Nevada, Utah	
9.....	William B. Fletcher '34	Washington, Oregon, California	1961
	12081 Smallwood Downey, California		

**May You Have
A Joyous
Holiday Season
And a Prosperous
And Healthful
New Year**

2,500

MSM Alumnus

Issued bi-monthly in the interest of the graduates and former students of the School of Mines and Metallurgy. Subscription price, \$1.50, included in Alumni Dues. Entered as second-class matter Oct. 27, 1926, at Post Office at Rolla, Mo., under the Act of March 3, 1879.

MSM Alumnus

Estimated 1,000 Return for School of Mines' Most Successful Homecoming Activities

The 1958 Homecoming was without a doubt the largest and most successful Homecoming ever held at MSM. It is estimated that approximately 1000 alumni attended the event. Governor James T. Blair, Jr., present to give the convocation speech, the successful meetings and banquet, and the spirit of participation of the returning alumni, all welded together to make the Homecoming one which will be long remembered.

The Board of Directors of the Alumni Association met Friday afternoon, October 31, with twelve members present at the meeting. The four newly-elected members to the Board were: J. Craig Ellis '38, Director Area No. 1; William B. Fletcher '34, Director Area No. 9; C. C. Palmer '40, Director Area No. 5; and Kenneth Anderson '42, Director Area No. 7. Ellis and Fletcher are new Directors; the others are incumbents.

The Board again approved the underwriting of six scholarships for freshmen, and set the 1959 goal for contributors to the Annual Alumni Fund at 2500. An all-time high of 2135 contributors was attained in 1958.

The highlight of the Convocation in the Auditorium, Parker Hall, Saturday morning, and indeed of the entire Homecoming week end was a speech presented by James T. Blair, Jr., Governor of Missouri. The speech in its entirety will be found elsewhere in the MSM ALUMNUS. Governor Blair was awarded an honorary membership in the MSM Alumni Association.

Two alumni were honored at the convocation and presented with the Association's Certificate of Merit. The two alumni were: Milo N. BeDell '23, of Laclede Steel Co., St. Louis, Mo., and Dr. Charles J. Potter '29, President of the Rochester Pittsburgh Coal Co., Indiana, Pa.

Four class reunion luncheons were held Saturday noon—the Classes of 1923, 1928, 1933 and 1938. And the Class of 1928 had the greatest number of its class return, with 20 members present at the luncheon.

The other luncheons were well attended.

Saturday afternoon the Miners won

their football game against the Maryville Bearcats.

Saturday evening the Annual Banquet was held in the beautiful new MSM Cafeteria, recently named Rayl Hall. A record turn-out of over 200 enjoyed this occasion. Barney Nuell '21, was master of ceremonies and Dean Curtis Wilson spoke informally after the dinner. All present were impressed with the new cafeteria facilities.

The open-house gatherings at which the St. Louis Section and the Ark-La-Tex Section were hosts were exceptionally well attended. The Homecoming dance floor was crowded. And at midnight Saturday it all officially ended.

We will end with this quote from THE MISSOURI MINER, the MSM student publication: "It was shown graphically that we have a wonderful group of alumni to be proud of, and a tradition of fame and success to follow."

Will we see you at the 1959 Homecoming?

MSM Chapter Tops Tau Beta Pi Groups

The Missouri Beta Chapter of Tau Beta Pi, located at MSM, was selected as the outstanding chapter of the Tau Beta Pi Association at its fifty-third annual convention held October 8 through October 11 at the Massachusetts Institute of Technology.

The Outstanding Chapter Award was established by the 1956 convention to encourage high-caliber work by the chapters in both routine and special affairs. The award is based on the internal and external chapter projects and activities and the accuracy, completeness and promptness of chapter reports to national headquarters. A chapter project must be of such nature as to enhance the prestige of the chapter through constructive service, either internal or external, or both. The judging committee must consider the extent, exploitation and possibilities of the project. The award consists of a suitably inscribed plaque presented with appropriate ceremony at the national convention.

Missouri Beta was the second chap-

ter to win the award, the first winner being M. I. T. in 1957. The Missouri Beta Chapter was victorious despite some very tough competition. Among the one hundred and two chapters represented at this year's convention were such universities as M. I. T., California Institute of Technology, Georgia Tech, and Purdue. The plaque was accepted for the Missouri Beta Chapter by Russell Cochran, the chapter president, who represented Missouri Beta at the convention.

There are many projects which make Missouri Beta's record outstanding. Probably the most unique is the "Freshman Friends" plan. This project was made possible by the merchants of Rolla who buy space in a coupon booklet distributed to freshmen which entitles them to free introductory services and merchandise at many Rolla business establishments. The money thus obtained by the chapter is used to provide a \$250 scholarship which is awarded to one of the top ten students in the freshman class each year. Also, each year an outstanding freshman is given an award for his scholastic achievements of that year, which consists of engraving his name on a plaque that hangs in Parker Hall. Another project is the Science Fair Award, which is a \$25 check that is presented annually to the student having the best project at the Science Fair.

The Beta Chapter maintains a register of students maintaining a grade point of 2.5 or better. This register is kept so that other honor societies may check eligibility of students. The four large bents located on campus and at the dormitory were built and are maintained by the chapter to publicize the school and Tau Beta Pi. The "Gung Ho" committee of Missouri Beta is unique. It is responsible for solving and submitting to the national magazine, The Bent, the answers to the brain ticklers, which are mathematical puzzles published in the magazine. The chapter also polls the students each year to determine what they would most desire as programs at the general lectures conducted throughout the year.

The fine leadership of the officers and the able assistance of Professor Hansen, the faculty adviser, have enabled Missouri Beta to win the Outstanding Chapter Award for 1958; and the chapter is already looking forward to 1959 with the hope of surpassing its past record of achievement.

Tau Beta Pi Award



Outstanding Chapter Award

Be it known that, on the basis of the excellence of its reports to the national office and of its projects and activities,

The Missouri Beta Chapter

is hereby declared

The Outstanding Chapter

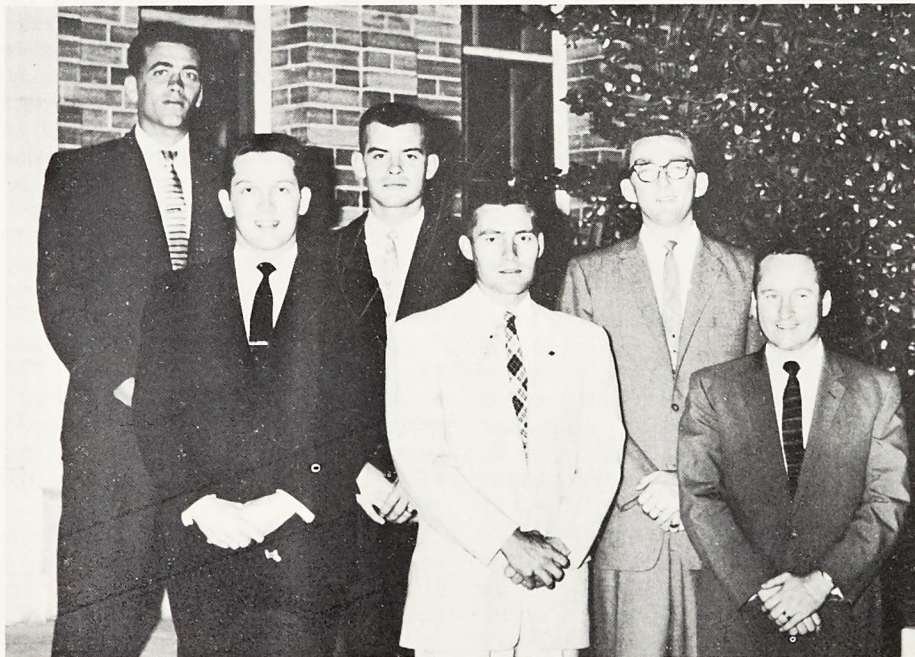
of The Tau Beta Pi Association for 1957-58

Presented on October 10, 1958 at the 53rd Convention in Boston, Massachusetts

Harold H. King
PRESIDENT

Robert H. Nagel
SECRETARY

Tau Beta Pi Officers



L. to R.: Joe Mingo, Rex Jones, Bill Biedler, Bob Stelloh, Russell Cochran, Peter G. Hansen, faculty advisor.

New Area Set Aside For Fraternity Housing

The School has opened a tract of land, known as Nagagomi Terrace, for the use of fraternity housing. This tract is located directly northeast and adjacent to the intersections of new Highway 66 and Nagagomi Road and it is about a ten-minute walk from the campus. The area itself is some twenty acres and is subdivided into six lots of approximately two acres. The land which lies west is also available for subdivision if conditions should warrant its use. There is also a central recreation area to be jointly used by the resident fraternities. The land is owned by the School and will be let on long term leases of 99 years.

The purpose of the plan is to aid fraternities interested in building to procure land at a very nominal fee.

The idea to formulate such a site was conceived when it was noticed that several fraternities were planning to build within the next few years and were faced with the problem of obtaining land within a reasonable distance of the campus.

Construction of water and sewer lines have been completed along with the power installations.

The lots will be given in order of chronological request with the first being Kappa Alpha, which has already begun construction. Fraternities planning to build new houses are not forced to build on these sites, they are just a convenience offered them by the School.

The rent for the first year shall be a sum equal to one fourth of the actual expense incurred by the lessor in extending the water and sewer lines from their present termination. In addition the lessee shall also pay one fourth of the actual expense of the construction of the drive or street.

The rental in subsequent years essentially will be \$100.00 per year plus each fraternity's share of one-fourth and one-sixth of the cost of the utility item expenses.

As can be seen, there are many advantages to this, other than financial aid to fraternities, the main one being the exploitation of inter-fraternity relations.

2,500

MSM Alumnus

Dedication Ceremonies of Buildings at MSM



Five MSM Buildings Dedicated to Alumni, McAnerney, Altman, Rayl, Farrar, Kelly

Five MSM buildings were dedicated October 25, before a large crowd that was present for the annual observance of Parent's Day.

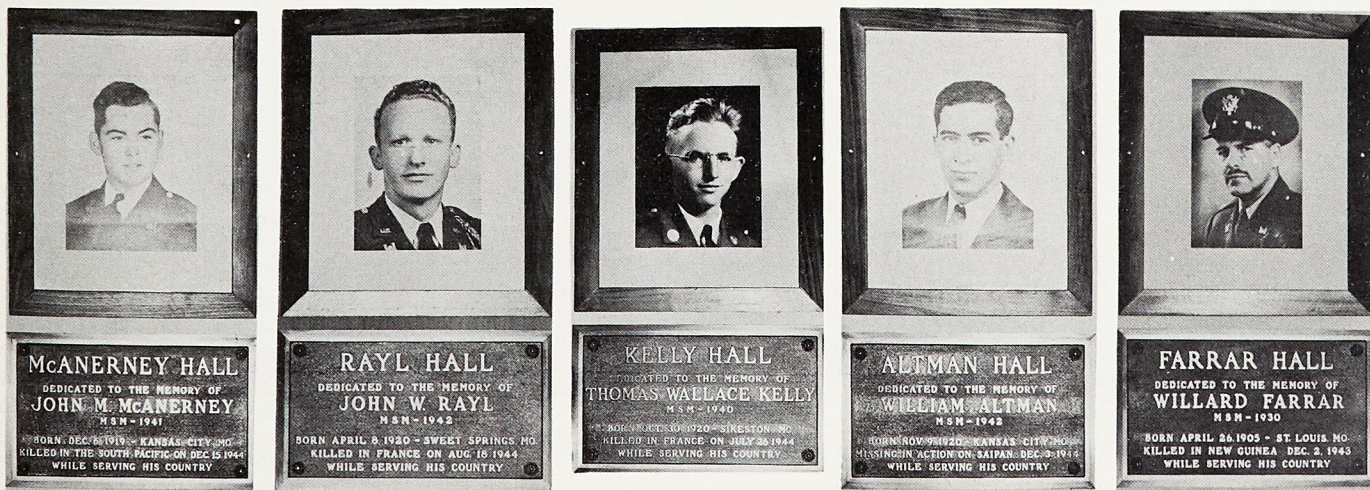
The life-blood of five World War II heroes was figuratively transfused into the material of the buildings as dedication speakers honored the alumni war dead during the unveiling of plaques bearing their names. Relatives of John Witcig Rayl, Sweet Springs, Mo;

John M. McAnerney, Kansas City, Mo; William Altman, Kansas City, Mo; and William Farrar, St. Louis, Mo., unveiled the plaques. The student presidents of Kelly Hall unveiled the name plate of Thomas Wallace Kelly, of Benton, Mo., as Kelly had no known relatives.

Dr. Elmer Ellis, president of the University of Missouri, authorized the dedication in a brief address. Dr. Cur-

tis L. Wilson, Dean of MSM presided and introduced the relatives, then introduced Edward W. Sowers, publisher of the Rolla Daily News, who delivered the dedicatory address. Mr. Sowers reviewed the growth of the School of Mines during the past sixteen years, referring to that period as "The Wilson Era," crediting Dean Wilson with "dynamic leadership" of that growth. He added that President Ellis has distinguished himself in building all the divisions of the University, including the division at Rolla, and suggested the phrase he coined might well be: "Ellis-Wilson Era." He also mentioned

Plaques Adorning the Dedicated Buildings



the vision and help of the Board of Curators, the Legislature and the Governor. The speaker estimated that \$8,000,000 in construction has taken place here (or will soon) during the past fifteen or sixteen years. But Sowers reminded that "men not material" has made the School of Mines famous, and suggested, in the words of Lincoln, "that we here highly resolve that these dead shall not have died in vain - that this nation, under God, shall have a new birth of freedom - and that government (and may I add, education—of the people, by the people, shall not perish from the earth."

After the dedication the crowd reviewed a parade of the 1300 uniformed ROTC Miners led by the ROTC band directed by Professor James W. Robbins with the Ft. Wood band bringing up a central position. The Pershing Rifles' snappy drill delighted the crowd.

Professor Gabriel Skitek was chairman of the arrangements committee for the ceremonies.

Kessler, MSM Graduate '24, Aids Old Newsboy Day

Old Newsboys Day, the Thanksgiving Eve children's benefit sponsored by the St. Louis (Mo.) Globe-Democrat, attracted volunteers, and a random glance at the names of the Old Newsboys gives an inside glimpse at the kind of people who make St. Louis the city with a heart. This paper states, "Corporation presidents, executives, disc jockeys, a physician, lawyers, a newspaper publisher—and the world's best known boxing referee were found in a list of the first 15 cards pulled from the file of volunteers." The best known boxing referee, of course, is Harry H. Kessler, who graduated from MSM in 1924 and is also a world renowned metallurgist. The Globe-Democrat continued, "Harry Kessler has been rated for years as one of the ablest referees of all time. It was second nature for him to volunteer. He always gives his purse from the big boxing matches to charity."

These Old Newsboys will sell copies on the sidewalks and streets of a special edition of the Globe-Democrat. Volunteers will accept payments of any amount anyone wishes to give. Last year, more than \$34,000 was raised and

given to 33 well-known agencies working with children.

Harry gave his services to this worthy cause last year.

Hildebrand Lectures At Welding Session

Edward L. Hildebrand '43, presented four lectures in the American Welding Society's fall educational program at the University of Houston that ran through October and November. To initiate the program he presented an introduction to metallurgy including structures of metals, steel making, the mechanical properties of metals, and principles of heat treatment. In Mid-October he instructed in welding metallurgy, including simple welds, thermal effects of welding steel, and tests to measure weldability.

Hildebrand's third session was on thermal and mechanical treatments of welds, including preheating and post-heating and their effect on the weldment, and mechanical peening, flame heating and application. His last lecture was on problems associated with welded structures - defects in weld and base arising during or after fabrication; porosity, inclusions and contamination; improper procedures, residual stresses, corrosion and cracking in service, and notch-sensitivity and transition temperatures for low temperatures.

Hildebrand is a staff engineer in the technical division at Humble Oil and Refining Co., Baytown, Texas, refinery. He is director at Houston Chapter, AWS. He is a member of the chapter's education committee and the Society's handbook committee on maintenance welding. Also he is a member of American Society for Metals' handbook committee on materials for refining services. He is a registered professional engineer and chairman of National Association of Corrosion Engineers' Refining Corrosion Symposium for 1959. He is a member of the NACE Technical Committee on Refining Corrosion, and in American Society for Testing Materials he is a member of several committees.

Mr. and Mrs. Hildebrand have one child; they live in Baytown at 2002 Alabama.

More Alumni Return Scholarship Money

Alumni who have received donations and awards in the past are more and more returning these awards to the School to be used for making new awards to present day students. The funds are being returned in appreciation for what the awards did for the recipients when they were in school.

The latest to join this group is Winston C. Moss, 840 20th Street, Hermosa Beach, California. Winston received the Lucy Wortham James Scholarship of \$200 when he was in school and has recently returned to the school his check for \$300 saying "\$200 won't buy what it did in 1946-47—actually will \$300 now buy what \$200 did?"

Dean Wilson states that this amount has been added to the amount made available by the James Foundation for similar awards at the Christmas Convocation this December.

Parent's Day Attracts More Than 1,500

More than 1,500 parents and friends of MSM students were on the campus October 25, to celebrate the annual Parent's Day and observe the facility that the School provides to train their sons and daughters.

In the evening 600 students, parents and faculty gathered in the new High School Cafeteria for the annual Parent's Day banquet. The speaker was Lester V. Cox, from Springfield, Missouri, vice-president of the Board of Curators, University of Missouri, and his subject was, "Not How To Create - But How To Use." Mr. Cox said, "Engineering Schools, and all other technological training colleges, should stress more knowledge of how to make peaceful use of scientific achievements, as well as creation of scientific goals. A knowledge of science, as well as a knowledge of people, is important." The MSM Glee Club, directed by Professor John Brewer entertained the group with solos by C. Warren Keller '51. Professor Leon Hershkowitz '41, was chairman of the committee on arrangements.

Alumni Section News

Arizona Section

The Arizona Section held its fall meeting in Phoenix, October 18.

The group met at 12:45 p.m. and were conducted on a tour of the Superior Sand and Gravel Co., and the Arizona Sand and Rock Co. It was interesting to all attending to observe the operations of the gravel pits and concrete plants.

During the afternoon the alumni wives were entertained at a card party at the home of Mrs. Fred E. Drete. Following the afternoon activities, the alumni and wives met at the home of "Cy" Young for a patio barbecue dinner. The delicious steaks and all the trimmings and other refreshments were thoroughly enjoyed by all.

After the dinner the business meeting was called to order by the chairman, Fred Drete. The report of the last meeting was read. The nominating

committee, Dan Huffman, John Harmon and Ben Cody presented a slate of officers for the group's consideration. The following were unanimously elected:

Chairman, John L. Brixius '47; Vice-Chairman, Robert F. Winkle '42; Sec'y-Treas., C. M. Browning '48.

Arrangement for a luncheon meeting in Tucson in connection with the AIME meeting, December 1, is to be handled by John Brixius and Bob Winkle. Plans to have the next meeting include a tour of the new Glen Canyon Dam site will be investigated.

Those present at the meeting were: Mr. and Mrs. J. Pennington '50, Mr. and Mrs. John L. Brixius '47, Mr. and Mrs. Harry G. Grigsby '48, Mr. and Mrs. John K. Forman '10, Mr. and Mrs. Joseph C. Finagin '14, Mr. and Mrs. John F. Harmon '28, Mr. and Mrs. Daniel E. Huffman '22, Mr. and Mrs. George E. Ude '16, Mr. and Mrs. Ben H. Cody '11, Mr. and Mrs. Milan H. Detwiler '11, Mr. and Mrs. Robert F. Winkle '42, Mr. and Mrs. C. M. Browning '48, Mr. and Mrs. John W. Wright '49, and guest Mr. and Mrs. Lawrence.

The group were very grateful and express their sincere thanks to Mrs. Fred Drete and Mr. and Mrs. "Cy" Young their gracious hosts for the day.

Northern New Jersey Section

The Northern New Jersey Section met November 7th at Dan Dowd's Steak House in Springfield, N. J., and there were twenty-one present, including the following alumni and guests:

Mr. and Mrs. Ernest J. Reeves '52, Mr. and Mrs. J. F. Vance '52, Mr. and Mrs. H. J. Haffner '35, Mr. and Mrs. A. E. Straub '40, Mr. and Mrs. G. H. LePiere '47, Mr. and Mrs. J. K. Schmitz '43, Mr. and Mrs. H. F. Bottcher '41, Mr. and Mrs. J. S. LeGrand '38, Mr. and Mrs. J. C. Ellis '38, T. C. Browne '51, R. O. Day '25, and J. W. Merrill '26.

After the dinner the group was shown movies and colored slides of the 1957 Homecoming at MSM. At a short business meeting a committee was appointed to arrange for another social meeting around St. Pat's Day in the spring. Alumni in the Northern New Jersey area should plan to attend this meeting.

The Section would appreciate having the alumni living in the area contact J. Craig Ellis, 524 Highland Ave., Westfield, New Jersey, giving him your present address in order to have your name on his mailing list.

Arizona Section Meeting



THE ARIZONA SECTION ALUMNI, their wives and guests at the Section meeting in Phoenix, October 18, 1958. The photo was taken by Charlie Browning '48.

38 Alumni Reunite At Metals Congress

During the National Metals Congress in Cleveland, Ohio, the MSM alumni who were attending the meeting and the alumni in the Cleveland area gathered at the Hotel Statler-Hilton, at noon, October 29th for a luncheon. Don Kozeni '44, coordinated the plans for the meeting. Dr. Dan Eppelsheimer, Professor of Metallurgical Engineering at MSM, was present and talked to the group.

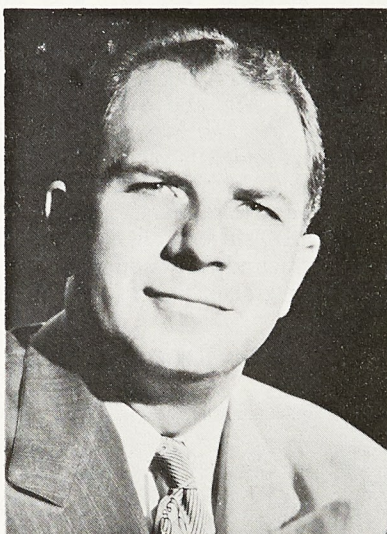
There were thirty-eight alumni present for this occasion which has been an annual affair since 1955. Those present were: Robert V. Jones '38, Copperweld Steel, Warren, O.; Chas. F. Benner '37, Continental Can Co.; Elmer Gammeter '26, Babcock-Wilcox Co., Milwaukee, Misc.; J. P. Gill '18, Vanadium Alloys Steel Corp., Latrobe, Pa.; E. C. Miller '28, Union Carbide Nuclear Co., Oak Ridge, Tenn.; Bob Penman '49, Metals and Controls, Attleboro, Mass.; Bill Smothers '40, Ohio Brass Co., Barberton, Ohio; Eugene Olcott '40, Atlantic Research Corp., Alexandria, Va.; Herb Kalish '43, Olin Mathieson Chem. Corp., New Haven, Conn.; Peter Mushovic '44, Moraine Prod., Div. G. M., Dayton, O.; George Tatoian '44, American Optical Co., Buffalo, N. Y.; Ed. Skalka '50, Crucible Steel Co., Cleveland, O.; Dean Williams '52, Battelle Institute, Columbus, O.; Gordon A. Engle '42, Micro Switch Div., Freeport, Ill.; Vernon C. Potter '52, Lincoln Elec., Cleveland, O.; S. Megeff '50, Sylcor., Bayside, N. Y.

T. C. Gregory '43, Western Elec. Co., Winston Salem, N. C.; Leonard H. Wolfberg '52, W. W. C., Inc., Cleveland, O.; A. D. Bliss '38, Alum. Co. of Am., Cleveland, O.; M. R. Calton '50, Caterpillar Tractor, Peoria, Ill.; P. G. Barnard '52, U. S. Bureau of Mines, Rolla, Mo.; David F. Walsh '23, U. S. Bureau of Mines, Rolla, Mo.; M. L. Frey '22, Allis Chalmers, Milwaukee, Wisc.; R. C. Tittel '38, Cummins Engine Co., Columbus, Ind.; T. R. Evans '51, Electro Met. Co., Niagara Falls, N. Y.; A. M. Krainess '50, Gen. Elec. Co., Cincinnati, O.; A. J. Craig, Jr. '50, Pitney Bowles, Inc., Stamford, Conn.; L. F. Zala '55, H. K. Ferguson Co., Cleveland, O.; Ken Ponciroli '55, Laclede Steel Co., Alton, Ill.; Dave Gould '51, Caterpillar Tractor Co., Peoria, Ill.; Robert G. Owens '50, La-

clede Steel Co., Alton, Ill.; C. A. Brown '50, Proto Tool Co., Jamestown, N. Y.; R. B. Barrow '51, Cons. Electrodyn Corp., Rochester, N. Y.; J. E. May '51, Gen. Elec. Res. Lab., Schenectady, N. Y.; T. J. Burke '49, Western Elec. Co., Pittsburgh, Pa.

Ray Kasten, Craig Ellis Elected Directors Of Alumni Association

Raymond O. Kasten '43, was appointed by the Board of Directors of the Alumni Association to fill a vacancy, Director at Large, the office that was held by James W. Stephens '47. Mr. Stephens is still one of the Vice-Presidents of the Association.



Raymond O. Kasten

Mr. Kasten is a native Missourian born at Appleton City, Mo., and received his B. S. degree in Civil Engineering at MSM. After graduation he accepted a position with the Curtiss-Wright Corporation as Junior Engineer. Later he transferred to Emerson Electric for a year. In June 1944, he joined the Union Wire Rope Corporation in Kansas City, Mo., now a subsidiary of Armco Steel Corp. His first job in his new position was to complete work for a Master's degree in Applied Mathematics at Washington University. In 1946, he was made Assistant Technical Director, and in 1949, he was promoted to Director of Research and Assistant Chief Engineer. In addition to these duties, he was named Manager of Quality Control in 1958.

He has a great interest in prestressed concrete and has written several articles that have appeared in trade journals. This Fall he was elected to the Board of Directors of the Prestressed Concrete Institute.

Ray has been very active in the Alumni Association's local section in Kansas City and was instrumental in its reorganization five years ago.

Mrs. Kasten will be remembered as Dorothy Muilenburg, of Rolla. They have two children; Joe, age 14, and Jill 9.

Ray's hobbies are hunting, woodworking and particularly, refinishing antique furniture.

J. Craig Ellis '38, has been elected Director, Area 1, MSM Alumni As-



J. Craig Ellis

sociation. Craig received his B. S. degree in Mechanical Engineering and immediately after graduation was employed by the Crane Company, Chicago Ill., and after completing the training courses he worked as a heating engineer. During World War II he served in a civilian capacity in the Army Ordnance Department at Minneapolis, Minn., and was in charge of small arms production, priorities and expediting and government owned equipment. After the war he was in the plating and heat treating field as well as industrial pipe and value sales.

In 1950, he accepted a position with the Maxon Premix Burner Company, his present employer. After working out of Muncie, Indiana for about five years, he was moved to the New York

office. In his capacity as sales engineer, he works with many companies of various types in solving their problems.

Craig organized the Northern New Jersey Section and is doing much toward the promotion of alumni activities.

The Ellis' live at 524 Highland Avenue, Westfield, New Jersey.

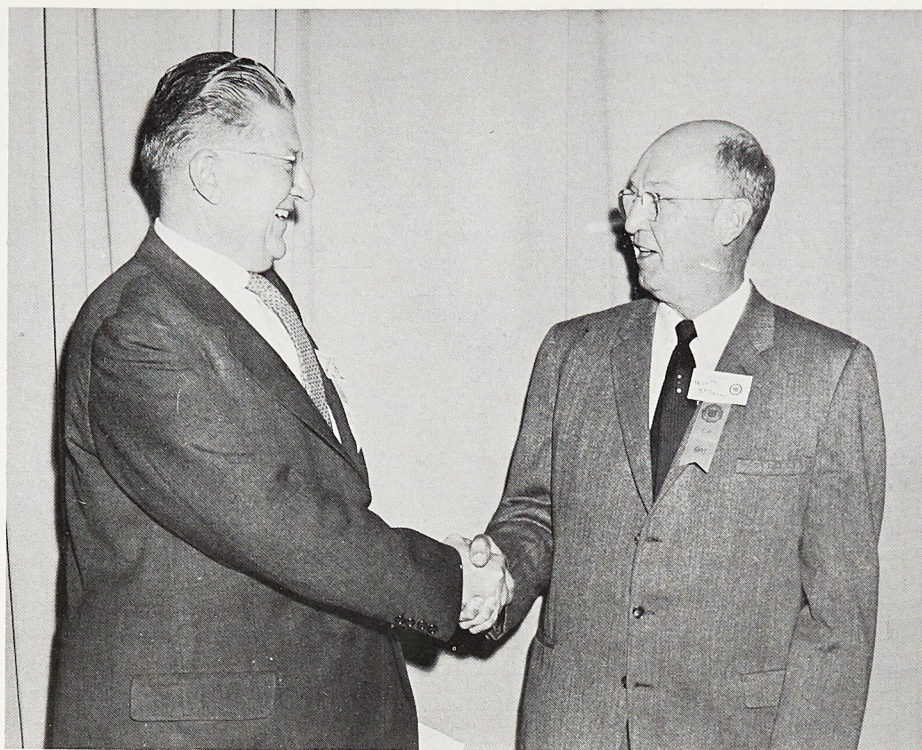
MSM Geologists Are Co-Hosts for National Meeting

The Department of Geology was well represented at the national meetings of the Geological Society of America, November 6-8 in St. Louis. The department, together with other geology departments in the St. Louis area were hosts to more than 2,000 geologists from all parts of the U. S. and the world. Dr. Proctor, Chairman of the Department, was co-chairman of the section on Structural Geology. Dr. Grawe was sub-chairman in charge of Special Functions at the meetings and co-chairman in the Mineralogy Section. The Department has an impressive display prepared by Professor Maxwell aided by a student from the C. L. Dake Geological Society. The display, entitled, "University of Missouri, School of Mines and Metallurgy, Department of Geology," by pictures, instruments, samples, and published geological literature indicated how MSM serves the public, trains the student, and aids industry and the professional geologist. It received many favorable comments.

Scientific papers were presented by Dr. G. C. Amstutz on "Theories of Formation of Rocks and Mineral Deposits" and a co-authored paper by him and Mr. A. Ligasacchi, a graduate student, on "Mineralization Zoning Based on Habit Changes of Pyrite." Dr. Bethke also acted as a co-author for a contribution on the "Thermodynamic Properties of Some Synthetic Zinc and Copper Minerals."

All seniors and graduate students of the Geology Department were excused from classes to attend these important meetings. They had the opportunity of hearing numerous papers of the 313 scientific contributions. Several staff members participated in the field trips in the lead belt of Missouri, the St. Louis area, the Mississippian rock sections of Missouri and Illinois, and the Pennsylvanian rock tour of the Society.

Certificate of Merit Awards



Dr. C. J. Potter '49, President, Rochester Pittsburgh Coal Co., Indiana, Pennsylvania, and Milo N. BeDell '23, Laclede Steel Company, St. Louis, Mo., were recipients of the Alumni Association's Certificate of Merit at the 1958 Homecoming for their outstanding service to the MSM Alumni Association and the Missouri School of Mines and Metallurgy.



This is the coveted Activities Award plaque of Eta Kappa Nu, the electrical engineering honor society, that was presented to the Gamma Theta Chapter on the MSM campus. The local chapter has achieved the Activities Award three times and received Honorable Mention two times in the six years of the citation's existence.

1958 MSM Alumni Fund

STATISTICS ON CONTRIBUTIONS BY CLASSES

Class	No. in Class	No. Living Which We Have Addresses	No. of Contributors	Percentage of Class Contributed	Amount Contributed
1891	3	1	0		
1892	4	1	1	100	\$ 5.00
1895	7	2	0		
1897	7	1	0		
1899	11	2	1	50	5.00
1900	8	1	1	100	5.00
1901	15	4	3	75	70.00
1902	13	4	2	50	10.00
1903	12	5	1	20	5.00
1904	19	8	3	37	22.50
1905	26	7	3	43	15.00
1906	23	7	5	70	120.00
1907	22	11	8	72	105.00
1908	29	18	9	50	50.00
1909	35	22	9	40	265.00
1910	42	26	17	65	230.00
1911	33	17	10	59	80.00
1912	37	24	10	42	101.00
1913	22	12	7	58	125.00
1914	25	14	8	57	103.00
1915	17	10	4	40	60.00
1916	37	27	13	48	205.00
1917	38	26	10	38	185.00
1918	24	19	7	37	87.50
1919	15	12	3	25	30.00
1920	58	49	23	46	300.50
1921	66	44	15	34	250.00
1922	73	59	23	39	305.00
1923	94	70	41	59	542.00
1924	45	36	17	47	173.00
1925	71	59	23	39	225.00
1926	61	49	28	63	285.00
1927	65	46	23	50	355.00
1928	68	50	28	57	250.00
1929	66	56	29	52	269.26
1930	70	55	25	46	210.00
1931	86	73	21	29	225.00
1932	108	86	39	46	302.50
1933	121	94	40	43	285.00
1934	93	82	25	31	196.00
1935	81	68	25	37	195.00
1936	79	70	22	31	227.00
1937	86	68	19	28	171.50
1938	90	80	35	43	272.50
1939	120	103	47	43	339.00
1940	157	141	70	49	536.00
1941	151	133	60	45	438.00
1942	217	187	64	34	387.00
1943	192	172	56	32	412.00
1944	140	126	36	29	227.50
1945	36	30	12	40	72.00
1946	46	40	9	22	65.00
1947	238	197	60	32	359.00
1948	405	325	85	26	613.50
1949	556	439	128	28	669.50
1950	935	809	270	33	1,461.26
1951	589	505	203	40	1,187.50
1952	355	306	117	38	645.00
1953	237	204	97	48	524.00
1954	198	175	53	30	328.50
1955	215	193	78	40	393.50
1956	231	210	61	30	344.00
1957			8		40.00
1958			5		5.00

1959 Alumni Fund Campaign Launched, 2500 Donors Wanted

The Alumni Association launched its 1959 Alumni Fund campaign at the beginning of the new fiscal year, November 1.

The 1958 Alumni Fund received contributions from 2135 alumni that contributed \$16,208.00. Although this was a record-breaking number of contributors the amount of the contributions fell short about \$1,000 of meeting the budget for the fiscal year.

The Board of Directors adopted and approved a budget of \$18,550.00 for the 1959 fiscal year and set a goal of 2500 contributors to the fund. This number is not unrealistic with a potential of more than 7500 alumni, but it is going to take the support of all alumni to attain the objective.

The first contribution letter has been mailed for the new fiscal year and we are appealing to you to send in your contribution now, in order that we can reach our objective and "wrap up" the drive early in the year. It will decrease the expense of making continuous contacts. We know that many of you have intended to send the contribution when the notice was received but have waited until tomorrow and we have never received it.

Again this year we are using the Class Agent Plan in making contacts with alumni to participate in the Annual Alumni Fund. This proved to be very successful last year which was our first year of the plan. The results of the contributions by classes are given to you in this issue of the MSM ALUMNUS and you can see how your class rated among the others. One hundred per cent isn't impossible and we are looking forward for several classes to break this barrier in 1959. The Class of 1900 did it this year but this is hardly competitive with only one member with a known address.

There is no fixed fee for your contribution. No minimum and maximum but computing by simple mathematics it is going to take an average contribution of approximately \$7.50 from 2500 alumni to meet the budget figure.

If you haven't, MAIL YOUR CONTRIBUTION TODAY. It is your contribution that we are depending upon.

Class of 1923



MEMBERS OF THE CLASS AND THEIR WIVES THAT ATTENDED THE REUNION LUNCHEON.
Standing, L. to R.: E. Mitchell, B. F. Hoover, W. S. Frame, J. M. Wanenmacher, J. P. Bryan, E. T. Campbell, S. M. Burke, H. S. Pence, M. P. Weigel, R. A. Lindgren, W. E. Remmers, M C. Buser.

Seated, L. to R.: F. R. Halasey, Mrs. Frame, Mrs. Hoover, Mrs. Campbell, Mrs. Wanenmacher, Mrs. Mitchell, Mrs. Lindgren.

Class of 1928

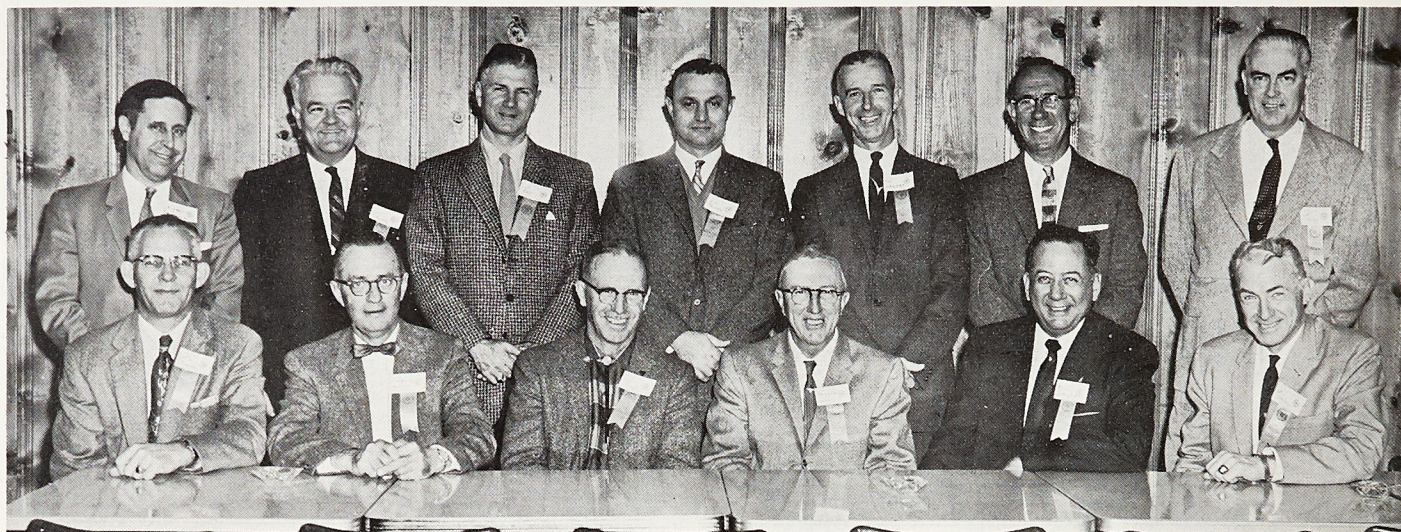


Standing, L. to R.: E. C. Miler, A. L. Hill, W. K. Schweickhardt, E. F. Thatcher, J. G. Donaldson, G. Roberts, M. B. Layne, O. D. Niedermeyer, C. A. Freeman, J. E. Weber, D. H. Crumbaugh, R. W. Couch, B. Y. Slates.

Seated, L. to R.: H. R. Kilpatrick, G. T. McCrorey, H. B. Moreland, Ruth Goodhue Yoder, P. A. Halasey, W. L. Metcalf, L. Berg.

November December 1958

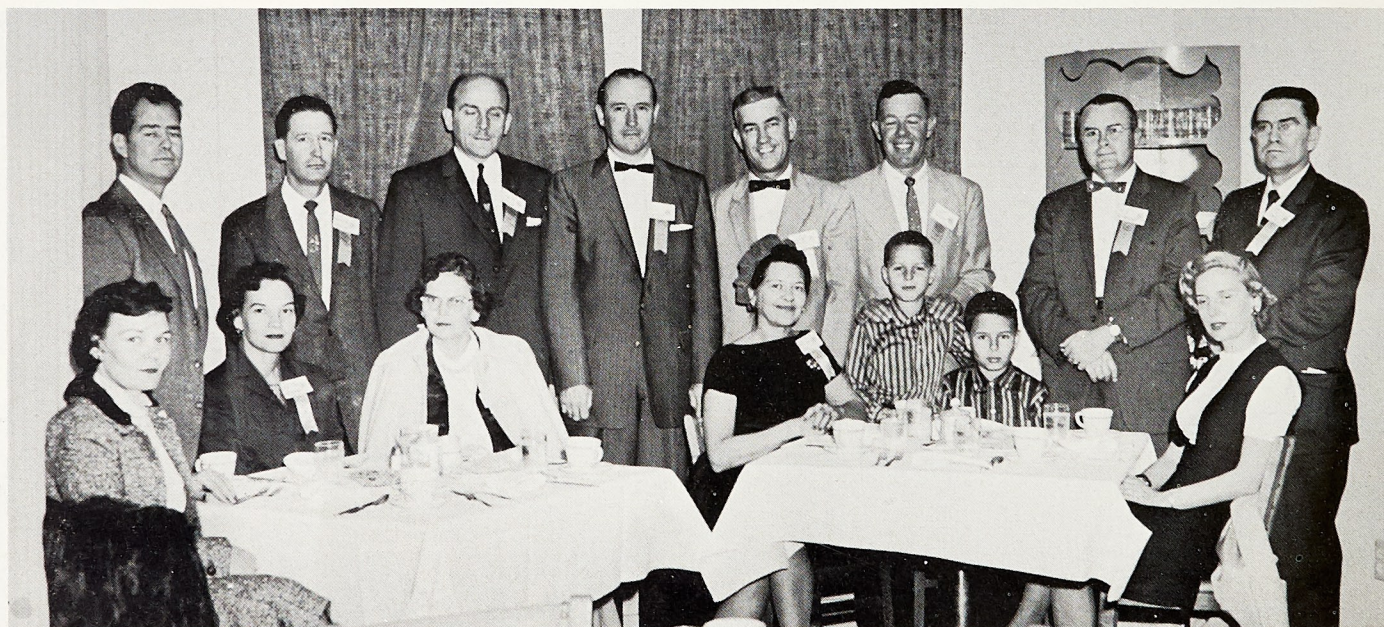
Class of 1933



MEMBERS WHO ATTENDED THE REUNION LUNCHEON. Back Row, L. to R.: A. W. Beinlich, V. Asher, W. W. Kay, I. C. Spotte, F. J. Louney, C. E. Achuff, T. W. Hunt.

Front Row, L. to R.: E. A. Roemer, C. F. Berthold, V. I. Dodson, T. O. Seiberling, B. Gross, W. J. Jabsen.

Class of 1938



MEMBERS OF THE CLASS AND THEIR WIVES AND CHILDREN THAT ATTENDED THE REUNION LUNCHEON. Standing, L. to R.: N. Peukert, H. Stokes, H. Smith, W. W. Decker, J. Long, F. McCrae, M. A. Gibson, W. A. Ford.

Seated, L. to R.: Mrs. Peukert, Mrs. Stokes, Mrs. Smith, Mrs. Long, Gibson children, Mrs. Gibson.

1958 Homecoming Banquet



November December 1958

200 Engineers Attend Asphalt Conference



The group of 200 engineers that attended the Asphalt Conference presented by MSM Department of Civil Engineering, Missouri Bituminous Contractors, the Asphalt Institute, and the Division of Continuing Education of the University of Missouri. This is the first conference held in recent years and those concerned were pleased with its success and expressed their desire to have the future conferences on the MSM campus. Professor E. W. Carlton, Chairman of the Civil Engineering Department, was in charge of the arrangement.

Mining Symposium Highly Successful

The Fourth Annual Symposium on Mining Research held on the MSM campus November 13-15 was exceptionally well attended and was closed by a dinner at which Royce A. Hardy, Assistant Secretary for Mineral Resources, U. S. Department of the Interior was the principal speaker. Mr. Hardy spoke on the role of minerals research and its effect on America's future. He praised the School of Mines, Bureau of Mines and the U. S. G. S. for their excellent cooperation.

Contract for Student Apartments Completed

The Curators of the University of Missouri have completed the awarding of the contract for the construction of the married student housing contract and construction may now proceed. A low base bid of \$345,000 for the general construction for these apartments had previously been accepted by the Curators from Plez Lewis and Sons of Enid, Oklahoma, but bids on the plumbing, heating and ventilating and electrical work had been rejected and the Plez Lewis bid extended while some specifications were revised and new

bids requested on the mechanical contracts. The contract for the plumbing, heating and ventilating was awarded to the Associated Engineering Company of St. Louis on their bid of \$98,740, and a contract for the electrical work to the Eckelkamp Electric Company of Washington, Mo., on the bid of \$31,140.

Bell Laboratories Featured In Fortune Magazine

"The World's Greatest Industrial Laboratory" is the title of an article in the November, 1958, Fortune Magazine. The Bell Laboratories is a colossus in an age of organized science. It can put 1,000 men to work on a missile, or leave a few men alone to win a Nobel Prize. The president of this colossus is Dr. Mervin J. Kelly, of the Class of 1914. Dr. Kelly directed Bell Lab's immense contribution to World War II technology and since then has been a frequent adviser to the military and AEC. This illustrious alumnus has received every top honor in his field. You should take time to read this interesting article. Dr. Kelly will reach his retirement age of sixty-five in February, 1959.

1958-59 Miner Swimming Schedule

Dec. 13 Ft. Hays, Kansas, State	There
Jan. 10 St. Louis U.	There
Jan. 16 Washington U.	There
Jan. 17 Southern Illinois U.	There
Jan. 29 Bradley U.	There
Jan. 30 Illinois Normal	There
Feb. 7 Louisville U.	Here
Feb. 14 Pittsburg, Kansas, State	There
Feb. 21 Indiana State College, Terre Haute	Here
Feb. 28 Westminster College	There

The swimming team is entered in a swimming meet at the Y. M. H. A. in St. Louis, Mo., scheduled for March. The exact date has not been set as we go to press.



After the regular meeting of the Board of Directors of the MSM Alumni Association, October 31, a joint meeting was held with MSM officials for a discussion of items of mutual interest and to develop co-operation between the two groups. Among those present were, Front, L. to R.: Leon Hershkowitz '41, Sec.-Treas. Alumni Ass'n; J. W. Stephens '47, V. P. Alumni Ass'n; O. W. Kamper '35, Director Area No. 3, Alumni Ass'n; J. W. Wallace '48, Director Area No. 4, Alumni Ass'n; P. T. Dowling '40, Exec. V. P. Alumni Ass'n; M. E. Nickel '38, Pres. Alumni Ass'n; Barney Nuell '21, V. P. Alumni Ass'n; Professor I. H. Lovett '24, Chairman, Dep't of Electrical Engineering; Ike Edwards, Exec. Sec'y, Alumni Ass'n.

Back Row, L. to R.: Dean Noel Hubbard, Dr. H. Q. Fuller, Chairman, Physics Dep't; Dr. A. W. Schlechten, Chairman, Dep't Metallurgical Engineering; Dr. T. J. Planje '40, Chairman, Dep't Ceramic Engineering; Professor R. M. Rankin '27, Chairman, Dep't of Mathematics; Dr. P. D. Proctor, Chairman Dep't of Geology; Professor L. C. Christianson, Chairman Dep't of Engineering Drawing; Dr. G. B. Clark, Chairman, Dep't of Mining Engineering; Dr. A. J. Miles '30, Chairman, Dep't of Mechanical Engineering; Professor R. F. Davidson '41, Chairman, Dep't of Mechanics; Professor E. W. Carlton '26, Chairman, Dep't of Civil Engineering; Dr. Dudley Thompson, Chairman, Dep't of Chemical Engineering; Dr. W. T. Schrenk, Dep't Chemical Engineering; H. S. Pence '23, past president, Alumni Ass'n; J. C. Salmon, Jr. '22, Director, Area No. 2.

1958-59 Miner Basketball Schedule

Tues.,	Dec. 2	Lincoln University	Rolla
Sat.,	Dec. 6	Blackburn College	Carlinville, Ill.
Tues.,	Dec. 9	Southern Illinois U.	Rolla
Fri.,	Dec. 12	Greenville College	Rolla
Sat.,	Dec. 13	Harris Teachers College	Rolla
Wed.,	Dec. 17	Westminster College	Fulton
Thurs.,	Dec. 18	University of Tennessee	Rolla
Sat.,	Dec. 20	Washington University	St. Louis
Wed.,	Jan. 7	Lincoln University	Jefferson City
Sat.,	Jan. 10	Central Mo. State College	Rolla
Wed.,	Jan. 14	S. W. Mo. State College	Springfield
Sat.,	Jan. 17	Washington University	Rolla
Fri.,	Jan. 30	N. W. Mo. State College	Maryville
Sat.,	Jan. 31	N. E. Mo. State College	Kirkville
Wed.,	Feb. 4	S. W. Mo. State College	Rolla
Tues.,	Feb. 10	S. E. Mo. State College	Cape Girardeau
Sat.,	Feb. 14	N. W. Mo. State College	Rolla
Wed.,	Feb. 18	Central Mo. State College	Warrensburg
Sat.,	Feb. 21	S. E. Mo. State College	Rolla
Tues.,	Feb. 24	N. E. Mo. State College	Rolla

Miners End Grid Season Strong; Take Second in MIAA

The Miners completed a successful football season. The first three games were all losses. A 20-to-3 defeat by the Northeastern Oklahoma State College team was the Miners' first. But this team is rated at the top by the National Association for Intercollegiate Athletics for the 1958 football season. The second loss was to the strong Lincoln University team at Jefferson City, Mo. The score was 46 to 0. And the third loss was to the traditional rival, Washington University, in St. Louis. It was during the final five minutes of play, with the score 12 to 13-Miners, that

the Washington University quarterback broke through and stole a hand-off from the Miner quarterback and raced unmolested 45 yards for the winning touchdown. The Miners outplayed the Bears in every other facet of the game. Final score 13 to 19.

In the fourth game things began to look up, although the opponents were the Pittsburg Kansas State Teachers the top team of the NAIA rating for 1957. This ball game was nip and tuck all the way with the opponents jumping to a 14 to 0 lead in the first quarter. The Miners tallied in the second quarter and missed the PAT and at the half trailed 14 to 6. The Miners scored twice in the third quarter and held the Gorillas scoreless. In the final quarter Pittsburg scored coming to the front 21 to 19. With time running out and the Miners unable to make the necessary yardage, halfback Pat O'Mealy booted a field goal from the 12 yard line to bring a 22 to 21 win for the Miners. All the Miner TD's were by runs of over 20 yards. O'Mealy scored from the 25. Parker pranced from the 24 yard line and Tom Cooper crossed the goal line from 21 yards. Twenty-three passes were hurled and 10 completed for 115 yards. Pittsburg tried seven and completed one. The Miners made 17 first downs, Pittsburg 14. By rushing, the Miner toted the ball 47 times for 147 yards while the opponents gained 181 yards in 55 tries.

The conference play started with Central Missouri State on the local gridiron. The Miners with the experience gained opposing four strong teams gained a 26-to-14 victory. The Miners scored twice in the first quarter. The first was via a pass from Wheeler to Cooper and the second by O'Mealy's 62 yard run for the TD. Both conversion attempts failed. Early in the second quarter the Miners scored again after working their way to the one-yard line and Wheeler scored and Parker booted the PAT. Again in the third quarter the Miners crossed the goal line and the kick was good for another point. The Mules scored twice in the final period against the Miner reserves. Wheeler demonstrated his passing prowess by completing 21 passes for one TD and a total of 147 yards. Cooper caught five of the passes for 63 yards and a score.

Conference game number two was at Cape Girardeau against the S. W. Mo. State Indians. Though the Miners were defeated by two touchdowns the

game was an extremely close contest until the closing minutes. The Miners were within striking distance a number of times but were unable to score. Five times the advance was halted within the Indians' 30 yard line. Two scoring chances were interrupted by pass interceptions. Wheeler maintained his passing pace completing 7 in 15 tries for 73 yards, and Tom Cooper came within one yard of equaling the school's rushing record in a single game by advancing 126 yards. Final score 19 to 7.

On October 25, the Miners met the highly touted Kirksville Bulldogs on Jackling Field before a Parent's Day crowd of 5400. And the dopesters had Kirksville winning by two touchdowns. The visitors took the kick-off and began a long drive which ended with a 52 yard TD run by Dale Mills, rated No. 1 ground-gainer in college football. But the Miners too were intent and began a drive with six first downs in a row and Parker plunged over the two-yard line for the tally and he kicked the conversion point.

The Miners scored twice more and with the lead of 21 to 7, the Teachers began to play ball, making it difficult for the Miners to hold their own. And the visitors scored twice more before the close of the game. In the meantime the Miners crossed the stripe to score and the final score was in the Miners' favor 27 to 20. Parker gained 85 yards in 24 attempts to lead the Miners rushing attack. And he counted for two touchdowns and four PATS. Cooper scored the other two tallies. Wheeler in this game set a school record of 56 completed passes in a season, 9 completions out of 14 tosses, netting 181 yards.

The next game was at Homecoming, the Miners meeting the Bearcats from Maryville on the local gridiron. This 20-to-7 victory pleased the record-breaking Homecoming crowd. QB Bill Wheeler completed nine out of 16 passes totaling 130 yards and two TD's. The Miners' first TD came from a eight yard toss, Wheeler to O'Mealy early in the second quarter. Parker was the game's leading scorer with 13 points and one PAT. He scored with a pass from Wheeler on the 7 yard line in the second quarter and early in the third quarter he plowed over from the 8 yard line. Maryville's only TD came in the final minute of play.

The season and conference play ended at Springfield, November 8, with

the fourth conference victory for the Miners, 36 to 19. And our Miners again for the second straight year, wound up in second place in the MIAA Conference standing, with the Cape Girardeau Indians again occupying the top berth.

Four Miners were named on the MIAA All-Conference Team: Ray Parker, Fullback; Tom Cooper, Halfback; Bob Ingram, Guard; and Bill Wheeler, Quarterback. In the final rating nationally in small college competition, Bill Wheeler ranked fourth in pass completion. He completed 85 out of 155 attempts, a 54.84 percentage. This broke all school records. Tom Cooper ranked ninth in this national rating, receiving 30 passes totaling 435 yards. Another school record broken.

The Miners placed two players on the All-Conference Second Team, Gerald L. Metcalf made one end berth and Louis Meisenheimer was chosen as a tackle.

There were only four seniors on the 1958 squad; Parker, Ingram, Jobe and Metcalf. Though these were valuable men to the squad, the few losses, without unforeseen complications, should make the Miners contenders again for the top position in the conference at the end of the 1959 season.

Miners Top MIAA In Cross-Country Race

The MIAA Conference cross-country race was held at Rolla, November 15. The contest had thirty-four contestants from the MIAA schools and they transversed a three and one-fourth mile course. Mike Vancil, a MSM senior, was winner of the race with a time of seventeen minutes, thirty-three and eight-tenths seconds. The MSM team was first with the lowest number of points, a total of 30, followed by Kirksville with 41, Maryville 83, Cape Girardeau 87 and Warrensburg 112. All MSM runners were in the top ten to cross the line.

BIRTHS

Mr. and Mrs. J. L. Knearen '53, are the parents of a son, Keith, born October 15, 1958, in the Delaware Hospital Wilmington, Del. The new father has been transferred to the newly formed chemical propulsion division of Hercules Powder Co., as a development engineer. The Knearems will move to Salt Lake City, Utah in December.

Text of Governor James T. Blair's Homecoming Speech

The following is the complete text of the address given by Governor James T. Blair Jr. at the Convocation during Homecoming.

It is always a pleasant experience for me to visit a school of learning and it is a special pleasure for me to have this opportunity to talk to you at this school today. All of you who were educated here, all of you who are being educated here, and all of you who are educating here, in the Missouri School of Mines and Metallurgy, have performed and are performing a service which will make a crucial difference in the awesome years ahead.

This great institution is renowned for its teachings in the fields of mining, and metallurgical, civil, mechanical, electrical, chemical and ceramic engineering. It is renowned for its great faculty. It is renowned for its graduates who have assisted in carrying our civilization and technology to almost every quarter of the globe. This institution has built a great tradition and is building an even greater one. Humanity is deeply in its debt and as the days of this turbulent era of mankind come marching toward us, the world will be even more deeply in its debt.

First, let me disclaim any special aptitude for science or knowledge of it and certainly I can make no claims as an educator. But if there is one thing that long years of public life and responsibility have brought me, it is some understanding of the humanistic-social program developed by this school's department of humanities and social studies and which you have integrated with your scientific technological curricula and designed so it will impart an understanding of the duties of citizenship, a knowledge of social and human relationships, and an appreciation of cultural interests outside the field of engineering. I can speak to you today only from this point of view.

To me, science and its startling discoveries, as I think it is to all average men, is a mystery, and its accomplishments are nothing less than miracles. All of us, of course, welcome its achievements and all of us are aware that not one of us can avoid its onward march or its impact.

Virtually every aspect of our lives and of our activities is almost daily subjected to change and fluctuation by the new scientific techniques. While

new strides, incredible to the layman, are being made with such breathtaking speed, it is to stress the obvious, then, when I say that we will continue to require more and even more scientific training of the highest quality in all basic and applied fields to fulfill the requirements of our way of life and to meet the deadly threat to our security. Any penurious counting of the cost is economy at its falsest.

We live in a world of constant movement. History has not stood still for us. Science has not stood still for us. Instead, both have been moving faster than ever before and, with the reality of atomic and hydrogen bombs, of satellites and sputniks, and the ferment of revolution spreading from Asia to Africa and to so many other parts of the world, our world's wild pace shows no signs of moderating.

The technological revolution has made our geographies obsolete, and many of our concepts of power and warfare. When the Western United States opened up a hundred years ago, county seats were located near the center of the county so as to be no more than a day's journey by horse from all parts of the county. Today in this air age, the whole United States is really no larger than a county fifty years ago. You can get to Washington in a day's journey from almost anywhere. Oceans and continents have shriveled and wars, as the Korean war, are conducted thousands of miles from the combatants' home bases. All the people of the earth are standing shoulder to shoulder in this hour of history with the hydrogen bomb ticking in our pockets.

We of the free world are faced by an enemy that is cunning and cruel—and all-devouring. Communism! A communism that is the avowed enemy of all earlier and different ways of life, with its insistence that its destiny is universal triumph over every system and over the spirits of all men everywhere. Its deep spiritual and philosophical conflict with the western humanist tradition and with democracy's freedoms is now familiar to all of us. For me to belabor this conflict for you at this late hour would serve no purpose for us who have sorrowfully come to understand it at long last.

It is easy to state our own ends in this republic and the world, to describe our goals, but it is so hard to fit them

to our needs. Every day statesmen swear eternal devotion on many different grounds to the ends of peace and security everywhere. Yet all of us stand at this point in mid-century unsure of so many things.

But one thing of which I think all of us are sure is the urgency for great scientific and technological advance. Historically our people have been care-free, bold, vigorous, impetuous, efficient, generous, and idealistic - and always somewhat undisciplined. This glowing and feverish spirit was magnificent and it was successful in the days when we were enjoying the protection of isolation from the rest of the world and when we were conquering an untouched continent. But now in this world of ferment and of turbulence, these qualities great as they were, are not alone enough. No, our former tools are not enough to maintain civilization in this land, or to preserve or to propagate it in the world. Certainly not enough, when life faces us with the most barbaric interval in mankind's memory, an interval which has restored slavery and torture, and brought the destruction of entire cities and the extermination of tens of millions of our fellow creatures, far more indeed than in the last thousand years of history.

Beyond these pioneer tools with which we built our country, and our civilization, we require indispensably a grasp of science and technology that will be foremost in the world. Without that grasp our security is in jeopardy and our future is only a maybe so. The call must spread for every possible addition to our store of scientific knowledge and to the numbers of the highly trained in the technological and scientific fields.

George Washington in his first inaugural address said: "The arts and sciences are essential to the prosperity of the state and to the ornament of human life. Every lover of his country and of mankind should be encouraged to support the advances of science."

In the face of the Kremlin's dread designs for world dominion, and its naked and grasping ambitions and adventures, as it deals blow after blow with its iron fist at the liberties of men, how grievously true is this paraphrase of George Washington's words: "The arts and sciences are essential not only to the prosperity of the state but

to its very life now and for so long as there is a future. Every lover of his country and of mankind has no course but to support every advance of science and to strive to turn every advance to a peaceful end."

I think it is not over-optimistic to believe that here in America there is a burgeoning awareness that this paraphrase is altogether true. The men and women of America now know that energy beyond Man's wildest dreams of twenty years ago stands waiting for him to discover. While we know but little of nature's potentiality, one thing we do know is that nature has not yet begun to be tamed. We know that we must pursue and discover and harness nature's secrets if we are to survive in a world where evil men are engaged in the same pursuit. Even now the fury and destruction that could be unleashed at a moment's notice is titanic and incomprehensible.

We live in dread of hideous unknown possibilities. Urgent is the need to discover the meaning of that unknown. Meanwhile surely we all agree that we must be and remain invincibly strong. We must agree on how we will achieve that strength, for the weapons of war become ever more powerful and more devastating. Scientists predict, and there is no reason to doubt, that a bomb or other means may be designed at a relatively early time which can blow our whole planet to bits. With scientific achievements flying into outer space, such evil weapons may be built, and if they are built, we have no assurance that the builders will be able to resist the urge to detonate them, on some imagined provocation.

Whether this unthinkableness is to come to pass, whether conquering the unknown will bring death or graceful life, lies in the hands of men, men everywhere, men who are good and men who are evil. Somehow mankind must find the means for regulating its discoveries and for channeling them into the avenues of peace. All of us agree there is no virtue in attempts to limit scientific endeavor or discovery in the fear this may lead to holocaust. No one ought to say that probing minds should be made to halt their explorations for fear they will destroy us. And, whatever the view of anyone, exploration will continue to go forward.

The physical world was meant to serve man, not to destroy him. And the aim that should guide all human endeavor and discovery should be a hu-

manistic aim. For without such an aim the peoples of the world inevitably will become pawns in the awful game of death. If we are not to play that game, we must blend science with humanities into a common humanistic culture for ourselves and for all people.

Our progress can be greatly increased by our education success is achieving a high degree of scientific literacy among the rank and file of all Americans. We must provide the youth of our nation, whether they are to become scientists or not, with an understanding of how to deal peaceably and intelligently with the great discoveries of our time and of the future. The maintenance of that sort of literacy in this century of science requires devotion of our energies and our resources to a constant cultivation of the concept that there is no evil in scientific discoveries, there is only evil in men. Today and tomorrow require even more than any other a cultivation of the spiritual qualities of man. In this age an educated man must have been educated at two levels. First, he must have at least a practical understanding of modern technology and a practical insight into its development and its economic and sociological impact on world society. Second, he must be tutored deeply in humanistic and spiritual values. His knowledge of economics, of history, sociology, psychology and religion must be thorough enough for him to evaluate discovery in terms of continuing human progress, rather than as a menace to human security. If we fulfill our potential for skill, talent, education, intellectuality and spiritual quality, there is no reason to put a brake on scientific advancement and there is every reason to promote that advancement as the boon to mankind that it can be.

No true humanist fears or despises science. The true humanist marvels at God's wisdom in planting wonders and at man's ingenuity in solving and understanding mysteries. He welcomes these endeavors. He asks only that they be directed away from evil and utilized only for good. He deeply believes that men with these beliefs, men with true spiritual qualities, soundly conceived and always practiced, have no cause to be fearful of scientific horizons, and that such men will always win out over every other kind of man.

So, as we go forward, scientists and laymen, let us always have the courage, the patience and the understanding, to

remember that while we are developing perhaps a means to blow the world apart, we men and women of the world, we humanists, if you please, can also develop by the same endeavors, and with God's help, a way to hold the world together - together for the ennoblement of all mankind.

BIRTHS

Mr. and Mrs. Roger Scrivner '52, are now parents. Their first child, Sharon Lynn, arrived October 4, 1958. The Scrivners were recently transferred to California from Dayton, Ohio, where the new father is District Sales Manager for southern California for G. H. LeLand, Inc. This electrical firm has home offices in Dayton, Ohio. The Scrivners' home address is 1041 Euclid St., Santa Monica, Calif.

Mr. and Mrs. Byron L. Keil '52, now have Byron L. Keil II, born October 5, 1958 in Ft. Worth, Texas. Byron is with Wilson Exploration Co., doing oil property management. The Keils have a new home address, 1800 Dakar Road, East, Ft. Worth 16, Texas.

Mr. and Mrs. Henry Hellrich '50, welcomed their third daughter, June 19, 1958, to join her six brothers and sisters. Henry is with Granite City Steel Co., and the Hellrichs' address is 2437 Hodges Ave., Granite City, Illinois.

Mr. and Mrs. Donald L. Roser '51, added their third son, Clifford Eric, to the Roser family, June 2, 1958. The Rosers live at 7 Russell Road, Cohasset, Mass. Don is with United Distributors, Inc., in Cambridge.

Mr. and Mrs. Quentin J. Schiene's '52, new arrival is Martin Alexander, born September 20, 1958. There are two other boys in the Schiene family, Marty and Rich. Quentin is with U. S. Steel and his address is 142 Fourth St., Chicago Heights, Ill.

Mr. and Mrs. David McIrwin '51, announce the birth of their second son, Stephen Osgood, October 27, 1958. Their address is 500 E. 266, Euclid, Ohio. David is with the W. S. Tyler Co., Cleveland.

Mr. and Mrs. John E. Mulholland, Jr., '52, have their fourth child, second boy, who was born September 3, 1958, and he was named Robert Michael. John is with Shell Oil Co., in Decatur, Ill., and his address is 3460 Orchard Dr.

Mr. and Mrs. William H. Feldmiller '54, have a son, Scott Clark, born January 24, 1958. Bill is a petroleum en-

gineer and is now in Seminole, Okla. Address Rt. 1, Box 2000.

Mr. and Mrs. William B. Vose '51, welcomed their second son, David William, born May 17, 1958. They reside at 1244 Arizona, Gary, Ind., and Don is product metallurgist at the Gary Sheet and Tin Mill, U. S. Steel.

Mr. and Mrs. J. K. Elbaum '51, 250 S. W., Kokomo, Indiana, announce arrival of Jonathan Martin, August 8, 1958. The father is with Haynes Stellite Co., as development engineer.

Mr. and Mrs. Frederick B. Burns '54, are the parents of Jimmy, who arrived July 30, 1958. They live at 1626 S. 78th, West Allis 14, Wisc. Fred is with Line Material Industries.

Mr. and Mrs. Gerald J. LaBouff '53, are proud parents of Deborah Jean, born September 4, 1958. The LaBouffs have just moved into their new home at 16431 School St., South Holland Ill. Gerald is with Standard Oil Co., of Indiana as an associate staff engineer. He is also working toward his Master's degree in Business Administration at the U. of Chicago, majoring in financial management.

Mr. and Mrs. Roy Lary Miller '58, announce the birth of a son, Eric Benjamin, born October 12, 1958. The Millers have a daughter, Diana Lynn, two years old. Lary is employed at the Bimco Corp., as a sales engineer, in Palatine, Ill. Their address there is 146 South Plum Grove.

Mr. and Mrs. Richard C. Hendrickson '53, now have three children with the arrival of Grant Howard, August 8, 1958. They live at 544 Pasadena Ave., Pittsburgh, 21, Pa. Dick is with Westinghouse Electric Corp., at their Bettis Plant.

Mr. and Mrs. John G. Reilly, Jr., '49, have their fifth child, Joe, who will be in the class of 1979. He arrived at the Reilly household October 17, 1958. The father is Ass't Mill Sup't, St. Joseph Lead Co., Balmat, St. Lawrence Co., N. Y. This is also his mailing address.

Mr. and Mrs. Kenneth L. Birk '52, Woodbury Heights, N. J., have a daughter Lydia Anne, born September 21, 1958. Ken is with Socony Mobil Oil Co., Inc., Paulsboro, N. J.

Mr. and Mrs. Stanley Johnsen '48, announce the birth of a son, Donald Peter. They have two daughters, Diane, five years and Barbara, four years. The Johnsens are in Ft. Smith, Ark., but plan to make their home in Ray, Ariz., in the near future.

Mr. and Mrs. Gary Davis '57, have a son. Gary is with NOTS, China Lake, California. Their address is 310B Independence. Gary was on the campus in October interviewing seniors as prospective employees of NOTS.

MARRIAGES

Goin - Jackson

Paul T. Goin '58, and Miss Edith Maxine Jackson, of Rolla, Mo., were married November 2, 1958. Paul is a Metallurgist with the U. S. Bureau of Mines, Rolla.

Jones - Cook

Ralph H. Jones '56, and Miss Lorraine Cook were married November 23, 1957. Ralph has been transferred from Crystal City, Missouri to Decatur, Ill., and is working as electrical engineer for the Pittsburgh Plate Glass Co. His Decatur address is 3760 E. William St. Rd.

Karbosky - Hale

Joe Karbosky '42, and Miss Geneva Hale were married June 7, 1958 and are now living in Bartlesville, Oklahoma where Joe is process engineer for Phillips Petroleum Co. Their address is 331 S. E. Waverly.

Boyd - Bacon

Marvin W. Boyd '53, and Miss Ramona Sue Bacon, of Tulsa, Oklahoma, were married October 17, 1958, and are at home at 5732 East Fourth St., Tulsa. Marvin is a gas engineer with the Shell Oil Co.

Beckman - Almquist

Charles A. Beckman '51, and Miss Elizabeth V. Almquist were married in Minneapolis, Minn., August 2, 1958. The newlyweds spent their honeymoon in Jamaica and their new home is at 1078½ S. E. 16th Ave., Minneapolis. Charles is doing research work on the oxidized taconites of the Western Mesabi Iron Range of Minnesota.

Gegal - Kruse

Donald Gegal and Miss Dorothy Kruse, of Kirkwood, Mo., were married September 13, 1958. They are living at 621 Koch St., Cape Girardeau, Mo. Don is with Southwestern Bell Telephone Co.

Ray - Orban

Herman A. Ray '55, and Margaret Orban, formerly of Cleveland, Ohio, were married May 14, 1958 in the New York Avenue Presbyterian Church, Washington, D. C. Herman is with the U. S. Geological Survey, Washington,

D. C., serving as a hydraulic engineer. The Rays live at 605 N. Irving, Arlington 1, Va.

DEATHS

Quentin F. Kuse '49, was killed in an auto accident near Altamont, Ill., October 10, 1958. It was raining at the time of the accident. Mr. Kuse was employed by the Army Corps of Engineers, in St. Louis, Mo., at the time of his death and residing at 2616A Louisiana, St. Louis.

Carl C. Wilkinson, Jr., '57 was killed in an auto accident near Shreveport, Louisiana, September 7, 1958. Guy Heinrich '57 was in the car in which Wilkinson was killed.

Gerald Alan Siron '57, died December 7, 1957.

John Roy Lee '27, died in Winslow, Arizona, March 14, 1958.

Warren M. Peterson '51, died suddenly in Jackson, Mississippi, August 19, 1958. Death was attributed to cerebral hemorrhage. Burial was at Pittsburg, Kansas. He is survived by his widow, Virginia and three daughters.

Bertram L. Ulrey '33 died in Seattle, Washington. The exact date of death is not known but it was in October, 1958.

Orie N. Maness '18, passed away June 2, 1958, in Wilmington, Delaware.

Alumni Personals

1907

Albert B. Bartlett is in mineral resources development in Wyoming. He states they are producing iron ore in Wyoming and he is seeking it in all other Western states and he would appreciate reports on deposits, even if low grade or with objectionable impurities. Albert's address is Wheatland, Wyo.

1909

John W. Beard, 2011 N. Florence St., El. Paso, Texas is a representative of the San Toy Mining Co., San Eulalia, Chih., Mexico.

P. S. Judy's major activity now is diamond core drilling and pressure grouting. His equipment is now working on large government dams at Towanda, Kansas, Turtle Creek Dam, Manhattan, Kansas, Devils Kitchen Dam, Carbondale, Ill., and Franklin Furnace Dam on the Ohio River. Mr. Judy lives at Edwardsville, Kansas, a suburb of Kansas City.

1910

J. D. Harlan, now at the age of 71, advises that his golf score averages 90. He is "assistant gardener" to Mrs. Harlan who has a lot of lovely flowers and shrubs. Until this year J. D. has been fairly active in the profession. He visits frequently with George Vogt '10.

John W. Bodman, consulting chemical engineer, 18 Wedgemere Ave., Winchester, Mass., recently made a trip to central Cuba on business. He expects to leave in November for Sao Paulo, Brazil to install a new line of machinery for Matarrarro, S. A.

1911

Ben H. Cody, 9902 Buena Vista Dr., Photnix, Arizona, though retired from production work in the copper industry in November 1953, has since done consulting work on copper and uranium ore processing.

1912

Edward D. Lynton returned from Paris, France in September after 18 months as representative of the California Exploration Co. He spent three weeks in Honolulu, Hawaii, in November and retired on his return. His address remains 422 Beloit Ave., Berkeley 8, Calif.

1914

Clyde W. Hall, Rt. 2, Box 215, DeLand, Florida, reports that Roy McBride '14, visited him recently. He also sees Lodwick '14, Boucher '14 and Metz '14, occasionally.

1916

Harold A. Neustaedter retired in July, 1957 from National Lead Co., and retained by them as a technical consultant. He is also doing other consulting work. He is living at 5635 Eichelberger, St. Louis 9, Mo.

Fred Grotts, consulting engineer, 417 E. Coolspring, Michigan City, Ind., is not active now because of eye surgery. In another six months he expects to continue in his profession after his eye becomes adjusted.

1922

I. W. Alcorn is vice president and general manager of Costal Marine Drilling and Construction Corp., Houston, Texas.

Glen S. Wyman, general manager Chile Exploration Co., Chuquicamata, Chile and the Andes Copper Mining Co., Potrerillos, Chile, advises that the new Salvador mine of Andes Copper

will produce ore for the first section of the new concentrator in April 1959. This is a \$103,000,000 project.

1923

Charles C. Tevis, construction engineer, Missouri State Highway Department estimates there are well over one hundred MSM alumni in the employment of the Missouri State Highway Department.

1924

Dr. Robert M. Courtney, White Valley Farm, Chesterfield, Missouri, is practicing orthodontics with offices in the University Club Building, St. Louis Missouri.

1925

George D. Gaines was a campus visitor in October. He is project engineer, The Fluor Corp., Ltd., Houston, Texas. George has a son who is a junior in the University of Texas. The Gaines' address is 3642 Glenhaven, Houston 25, Texas.

1930

George W. Douglas is with the General Steel Castings Corp., Granite City, Ill. His address is 701 E. Chain of Rocks Road.

1931

Ernest R. Epperson, a member of the faculty of Michigan College of Mining and Technology, Houghton, Michigan, has completed an appointment as a resident research associate at the Argonne National Laboratory, Lamont, Ill. Working with staff members of the Laboratory's Chemical Engineering Division, Professor Epperson conducted a survey of methods for preparing solids in suitable sizes for fluidization. The Argonne National Laboratory is operated by the University of Chicago under contract to the U. S. Atomic Energy Commission.

E. C. Meckfessel is a chemical engineer with the Crown Zellbach Corp., Port Angeles, Washington. His address there is 1720 E. 5th.

1932

Fred Zvanut is now in Lakewood, Ohio, residing at 14533 Bayes Ave., expects to move back to the St. Louis area in June 1959 and be located in the St. Charles (Mo.) area.

John Matsek is employed by the Corps of Engineers, Little Rock District. He is Chief, Military Projects Branch, Engineering Div., covering military projects in Arkansas and the northern half of Louisiana. His Little

Rock, Arkansas, address is 22 Pine Manor Drive.

1933

Mary L. Johnson Koewing is a high school teacher in Wichita, Kansas. Her address is 2226 N. Estelle, Wichita 14.

Charles E. Achuff is sales engineer with the Insulrock Co., Division of the Flintkote Co., E. Rutherford, New Jersey. His headquarters is 839 S. Ballas Road, Kirkwood 22, Mo.

Robert H. Latham is pipe line engineer, Pipe Line Technologists, C. A., Apartado 19, Maracaibo, Venezuela.

Wm. J. Jabsen, metallurgical engineer, Kalamazoo Steel Process, Inc., Kalamazoo 19, Michigan, addressed the Milwaukee Chapter of the American Society for Metals, October 6, on the subject of "Hardening and Tempering of Metals." There were approximately 300 in attendance. This address was in connection with an educational course being sponsored by the Milwaukee Chapter.

1935

Max E. Edgar, West Glacier, Montana, advises that his wife, Carol, was released from the hospital, October 24, and on the road to recovery after ten weeks hospitalization and three operations.

John E. Harrod has been promoted to Assistant Division Supt. of Steel Production, South Works, U. S. Steel Corp., Chicago, Ill. John began his employment with U. S. Steel's South Works organization in June 1935 as a Metallurgical Apprentice. His residential address is 2515 W. 110th St., Chicago 43, Ill.

1936

Ted A. Roes has moved from St. Louis, Mo., and is now in Cody, Wyoming, and owns and manages Cody Motors, a Ford agency.

Geraldine Grimm Harr is with the city manager's office in Kansas City, Mo. Her address is 1915 E. 49th.

1937

Frank S. Millard, well logging coordinator with the Carter Oil Co., Tulsa, Okla., presented a paper on "The Application of Well Logs in the Paradox Basin" at the third conference on Well Logging Interpretation at McMurray College, Abilene, Tex. Frank's address is 2911 E. 37th, Tulsa.

1938

Roy C. Cornett has closed his management and personnel consulting office

in Richmond, Va., after about three and one-half years and now is working as a general engineer in the Research and Development Division of the Office of Chief of Engineers, U. S. Army, Washington 25, D. C. His address is 5312 Eighth Road South, Arlington 4, Va.

Eugene F. Hill, formerly with Ford Motor Co., is now with the new products division, market manager, Wolverine Tube Div., of Calumet & Hecla, Inc., Allen Park, Michigan. His residence address is 24320 Edgemont, Birmingham, Mich.

Charles L. Clayton, 1106 Hill St., Hannibal, Mo., was elected vice-president of Missouri Savings and Loan League at the annual meeting held in Kansas City, Mo.

1939

Glen E. Brand's address is Box 567, Thousand Oaks, California.

Jack McCaw is with the E. I. du Pont de Nemours & Co., New Johnsonville, Tennessee, and is residing at 106 Hilltop Road, Dickson, Tenn.

Lt. Col. Herbert F. Crecelius is anticipating retiring in July 1959 and returning to civilian life. He has had extensive experience in two wars with a variety of positions, research and development, procurement and distribution of basic chemical products abroad on a multi-million basis. Spent two years with the Chinese Army. Presently he is assigned to the U. S. Army Chemical Corps School, Fort McClellan, Alabama.

1940

Col. George B. Munroe, Jr., is now assigned to the Air War College, Maxwell AFB, Alabama.

Ben H. Martin has been licensed as a professional mining engineer by the State of Arizona. He is with Lewisohn Copper Corp., Tucson, Arizona. His address is 5334 E. Willard, Tucson.

H. D. Sturges, of the Curtis Wright Corp., has been appointed general manufacturing manager of the Woodridge, N. J. plant. His address is unchanged, Roome Road, Towaco, N. J.

P. A. Dennie has been promoted to division manager, Shell Oil Co., Roswell Division, covering all of southern and central New Mexico. His address is Box 845, Roswell.

Lynn J. Riege, director of sales and service, Hapman Conveyors Inc., advises that his company recently purchased another conveyor company

which will more than double the sales volume of the parent company. The parent company is in Kalamazoo, Michigan. Lynn's address is 411 Oakhurst.

1941

A. C. Pautler has a change of address to 2706 Peel St., Huntsville, Alabama. He was formerly in Old Saybrook, Connecticut.

Colonel Andreas A. Andreae, USAF, will be assigned to Thule, Greenland, as Director of Material responsible for all maintenance, supply and support of tactical as well as scientific groups.

1942

Leslie J. Maher is with the Bemis Bros. Bag Co., St. Louis, Mo. His residential address is 9929 Knollshire Dr., St. Louis 23.

J. W. Zoller just returned from six months in The Hague, Netherlands, on an assignment for the Shell Oil Co. While in Europe the Zoller family had a month's vacation and were able to tour part of Europe and the British Isles. His assignment now is in Midland, Texas, and his address is 1502 Seaboard Ave.

John Smith, Jr., has been employed by Western Electric Company since graduation. He was recently transferred from the Hawthorne Works in Chicago, Ill., to the company's new plant under construction in Omaha, Nebr. John is responsible for the engineering planning of equipment and processes associated with the manufacture of local telephone cable. His Omaha address is 2823 S. 105th Ave.

1943

Herbert S. Kalish has a new address: Northrop Road, Woodbridge, Conn.

Frank C. Rehfeld, 8 Southcote Rd., Brentwood, Mo., was recently elected assistant secretary of Monsanto Chemical Co. Frank joined Monsanto as contracts engineer in 1952 and became a member of its law department in 1956. He received his L.L.B. degree from the University of Missouri in 1952. His wife is the former Mary Montgomery of Rolla.

1944

Robert F. Summers is now in Alexandria, Va., residing at 5 Wilton Road.

1946

O. M. Olson was recently appointed superintendent, Berry Refining Co., Gary, Indiana. His Gary address is Box 1064, Ogden Dunes.

William A. Rutledge, with General Electric Co., specialty motor depart-

ment, is now in Fort Wayne, Indiana, living at 2621 Capital.

1947

Charles G. Brent left the Fluor Corporation in May to join Macco Corp., refinery chemical div., as senior engineer. His new business address is 14409 S. Paramount Blvd., Paramount Calif., and he lives in Whittier, 8555 Catalina Ave.

1948

Charles N. Hudson has been transferred to the New York Office of the Sinclair Refining Company in the position of assistant manager of asphalt and petrochemicals production, manufacturing department. The Hudsons have two daughters, Annie, age 9, and Sandy, age 6. They are living in Springdale, Connecticut, on Nottingham Drive.

Woodward R. McPheeters is with Micro-Balancing Inc., Garden City, N. Y. His address is 89-07 146th St., Jamaica 35, N. Y.

Donald J. Mathews, 2917 Portgual Dr., St. Louis, Mo., is packaging sales engineer, Alton Box Board Co., container division, 812 Olive St., St. Louis, Mo.

W. A. Schaeffer, III, visited Rolla this fall but was unable to be present at Homecoming. He is with Schlumberger Well Surveying Corp., Andrews, Texas.

Donald G. Schmidt is president of the Chicago Chapter of the American Foundrymen's Society for 1958-59. Donald is employed by H. Kramer and Co., and lives at 316 W. Maple St., Hinsdale, Ill.

Irving C. Falk has moved to New Brunswick, N. J., and his new address is 253 Matilda Ave. He is a construction estimator with Construction Service Co., Bound Brook, N. J.

Lloyd Fesler's address is 746 West 158th St., Gardena, Calif.

Horace Tharp Mann is with the National Security Agency, Ft. George Meade, Maryland.

Vernon R. Lawson was on the campus in October. Vernon lives in Joplin, Mo., 2818 Missouri, and is with Allgeier, Martin and Associates, consulting engineers. There are two children in the Lawson family, Douglas, ten years, and Dana Ann, 7 months.

1949

Robert C. Perry has been living in Maryland the past two years. He was transferred from Missouri by the Pittsburgh Plate Glass Co., and is now as-

sistant superintendent of the G & P Department in the newest and most modern plate glass plant in the world. The Perrys have four children and are living at 621 Montgomery Ave., Cumberland, Maryland.

Gene A. Tyrer is technical sales representative in the state of Indiana for the Dow Corning Corp., of Midland, Mich. Gene is married and the Tyrers have a two-year old daughter. They live at 4054 Barnor Drive, Indianapolis 26, Indiana.

Murray Schmidt is employed as a refractory sales engineer for Kaiser Chemicals Div., Kaiser Aluminum and Sales, Inc., Oakland, Calif. Murray, his wife, Betty, and their two fine sons, Bobbie, 3 years, and Jimmie, 2 years, reside at 3353 Mildred Lane, Lafayette, Calif.

J. B. Toomey opened a consulting office for mechanical design of guided missile and rocket engines and components. The new firm, the Value Engineering Co., is located in the Colonial Bldg., Alexandria, Va.

Vernon Casper completed matriculation at New York University graduate school for a Master's degree, June 1958. He is with Stauffer Chemical Co., Engineering Dept., Chauncey, N. Y. His residence address is 190 Renison Dr., Westbury, L. I., N. Y.

Fred M. Springer is division engineer for Magnolia Pipe Line Co., Midland, Texas. He moved from Dallas, Texas, in February, where he was mechanical engineer in Magnolia's Dallas office.

Frank J. Bumpus lives at 139 Kingsbury Lane, Tonawanda, N. Y., and is employed by the Olin Mathieson Chemical Co., Niagara Falls, N. Y.

George J. Juenger is employed by the Majestic Iron Works, Inc., Maplewood, Mo., and his residence address is 437 Ashwood Lane, Kirkwood 22, Mo.

Odis L. McCallister, Jr., is in Little Rock, Arkansas, and is with the J. C. Lewis Co. His address is 6 Belmont Dr.

Wilbur E. Niemiste's address is 10 Telegraph Drive, Virginia, Minnesota. He is employed by the Oliver Iron Mining Div., U. S. Steel Corp.

Laurel G. Linn is with the Nortronics Div., Northrop Aircraft, and presently is working on system analysis relating to the development and programming of automatic test equipment for missile weapons system. He lives at 5823 Daneland St., Lakewood, Calif.

1950

Elmer W. Friske, 900 Crystal St., Taft, Calif., is construction engineer for the Honolulu Oil Corp.

John E. Muehring is vice-president of Guerdon Industries, Inc., world's largest manufacturer of a single brand mobile home. Their two factories, in Marlette, Michigan, one each in Salt Lake City, Utah, Newton, Kansas, Corona, California and Boise, Idaho. John lives at 1062 E. Francis, Corona, Calif.

William Hollis, metallurgist at Greenfield Tap and Die Co., Greenfield, Mass., resides at 41 Woodleigh Ave., Greenfield. There are three children in the Hollis family, David, Linda and Sharon.

Ivan Bounds, with the S. E. Evans Mining Company was transferred from heavy construction, in September, out of Fort Smith, Arkansas, to quarry operation near Denison, Texas. His address there is P. O. Box 282.

Capt. O. E. Wilson is quality control engineer, Tinker AFB, Okla. The Wilsons with their four children reside at 1609 S. W. 61 Terr., Oklahoma City, Okla.

L. W. Cantwell is assistant engineer in the chief engineer's office of the G. C. and S. F. Ry. Co., in Galveston, Texas.

Earl D. Campbell's address is now 2420 E. 24th St., Odessa, Texas. There are five of the Campbells; Don, Nancy, Keith, Laura Ann and Wally. Earl is in the paint manufacturing business.

Ivan L. Gray after eight years with General Electric joined the Martin Company in October as supervisor of the general engineering laboratory in the nuclear division. The Grays are living in Baltimore, Maryland, 7714 Hills-way Ave.

Donald W. Marshall, P. E. 804 W. 4th St., Cameron, Mo., was recently elected president of the Northwest Missouri Chapter, Missouri Society of Professional Engineers. Don is district engineer, Division of Health of Missouri. He received his Master's degree in Public Health Engineering from the U. of Michigan in 1953.

John J. Sponske has completed eight years of service with the Bituminous Casualty Corp., as engineer in the Kansas City area. He lives in Overland Park, Kansas, 8344 Marty St.

Edward P. Kyburz is working on a Master's degree at a Bureau of Mines Fellow at the University of Arizona. His address is 6111 E. 16th St., Tucson, Arizona.

Thomas W. Whitfield, Jr., is a structural engineer employed by the Union Bag-Camp Paper Corp., Savannah, Ga. His Savannah address is 210 Oxford Dr., Kensington Park.

Clifford L. Adams' new address is 2618 Greendale Ave., Norfolk 3, Va. He is now Professor of Physics and head of the Physics Department at the College of William and Mary, at Norfolk, and is also acting as consulting physicist for the Cancer Research Clinic at the Norfolk General Hospital and Medical Center.

Dominic A. Verive's new address is 616 W. Third St., Villa Park, Ill.

Donald C. Sewell is a highway engineer and living at 608 Jefferson St., Hillsboro, Texas.

1951

Herman A. Fritschen, Jr., 712 Yale Drive, Bartlesville, Okla., is employed with Cities Service Oil Co.

Antonio P. Ballestero has accepted a position as project engineer with Lawrence T. Beck and Associates, Inc., consulting engineers, Philadelphia, Pa. His address is 371 Anthony Road, King of Prussia, Pa.

Earl Brunkhorst, with R.C.A.-Victor Camden, N. J., has a new address, R.D. 2, Moorestown, N. J.

Edwin G. Elliot is now working for the Aerojet-General Corp., as a development engineer in the solid rocket division. He has residence at 2501 Chassella Way, Rancho Cordova, Calif.

Joseph M. Fornari, production and maintenance engineer for the Rochester and Pittsburgh Coal Company, Indiana Pa., has completed his new home at 324 Yellow Creek St., Homer City, Pa.

Ervin E. Dunn is project engineer, design and supervision of construction of the ICBM operational missile launching facilities in the employment of Halmes and Narver, Inc., Los Angeles, Calif. He lives in Anaheim, Calif., 321 Valley St.

Thomas A. Simpson is a geologist with the U. S. G. S., and just completed a mining hydrology project in the Birmingham, Alabama Dist. He is working on a Master's degree in geology

at the University of Alabama. His address is P. O. Box 721, University, Ala.

Frank Birch now heads the operation of two small uranium mines in the Mt. Spokane area of Washington. His wife, the former Bettijeanne McNeil '49, is a housewife. Their address is W. 203 27th, Spokane 41, Wash.

Luciano Gaillard, with the Northern Peru Mining Corp., has a new assignment, Miraflores, Lima, Peru.

Charles R. Kline has been promoted to project engineer in the detection systems section, advanced development engineering, air arm division, Westinghouse Electric Corps., Baltimore, Maryland. His address there is 4504 Manordene Road.

Roger H. Swisher is division engineer Phillips Petroleum Co., Minneapolis, Minn. His residence is at 4043 Lake Road, Minneapolis 22.

W. H. Rushford is sales engineer, Perco Div., Phillips Petroleum Co., Bartlesville, Okla. His address is 1601 S. E. Melmart Dr.

Dale E. Hirschfield, sales engineer, Mining Div., Jeffrey Mfg. Co., Columbus, Ohio, is living at 2409 Fairfield Ave., Bluefield, W. Va.

Thomas R. Evans is with Electro Metallurgical Co., Niagara Falls, N. Y., as sales engineer.

William L. Bevan is in Granite City, Ill., with American Steel Foundries and lives at 4929 Pernod, St. Louis 9, Mo.

William B. Plummer, 600 Winston

Drive, Vestal, N. Y., is with IBM in Endicott, N. Y.

Ralph A. Tuepker has been promoted to engineer, operating practice in the blast furnace division of U. S. Steel's South Works, Chicago, Ill. He joined U. S. Steel after graduation and in less than a year was promoted to a turn foreman. With his wife, Shirley, and son, Christopher, he lives at 490 Deer Trail Rd., Chicago, Heights, Ill.

1952

Frederick R. Bullivant, Box 3, R.R. 1, Highland, Ill., is employed by the McDonnell Aircraft Corp., St. Louis, Mo., as a process control engineer.

Norman P. Zachelmeyer has changed companies and location and is now in Chicago, Ill., and is a supervisor for the Container Corp., of America. His address is 7252 W. Clarence Ave., Chicago 31.

Francis S. Basler is employed by the Missouri Pres-Crete, Inc., Overland, Missouri, processors of prestressed concrete. He lives at 7817 Clymer Dr., St. Louis, Mo.

H. Chalmers Kerr, Jr., this past year spent three months in St. Paul, Minn., at Remington-Rand UNIVAC working with large scale digital computers. Chalmers is still with the U. S. Navy Electronics Lab., San Diego, Calif.

Clarence M. Tarr, Jr., has been promoted to product metallurgist, wire products, Sheffield Div., Armco Steel Corp., Kansas City, Mo. Clarence joined Armco in January '55. He was formerly with U. S. Steel Corp., Chicago, Ill. His residence address is 8003 Arlington, Raytown 33, Mo.

Tom L. Scheffler completed a tour of duty with the U. S. Navy a year ago and returned to the General Electric Co., for several months temporary assignment and training in Schenectady, N. Y. He is now on a permanent assignment at the company's aircraft develop-

ment division at Lynn, Mass., and is residing at 177 Humphrey St., Marblehead, Mass.

Charles A. Weeks formerly assigned in Aruba, Netherlands Antilles has a change of address and it is now in care of Iranian Oil Refining Co., Abadan, South Iran.

Raymond E. Segelhorst's address is 631 Holiday Ave., Hazelwood, Mo., and is employed at the McDonnell Aircraft Corp., St. Louis, Mo.

Roy Nutter is with the Core Laboratories, Inc., Denver, Colorado, and is presently working in Alaska as a geologist.

1953

Robert C. May is employed at the Savannah River plant of the Du Pont Co., Aiken, S. C. Mrs. May is the former Betty Jean Gallahon of Rolla. The Mays now have their second son, David Bryan, born August 6, 1958. Their first son, Robert C. Jr., was born January 19, 1955. Their address is 434 Banks Mill Rd., S. E., Aiken, S. C.

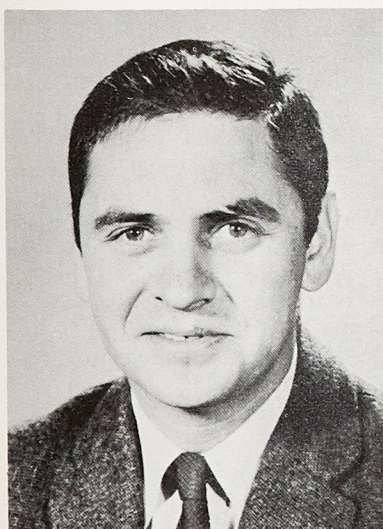
Eugene M. Getson is an engineer at the Lockport, Ill., refinery of Texaco and lives at 1503 N. William St., Joliet, Ill.

Philip J. Clark is a geologist with Canpet Exploration Ltd., Calgary, Alberta, Canada. His address is 8423 7th St., S. W., Calgary and he is interested in contacting any MSM alumni in the Calgary area.

Bob L. Paulsell is on a foreign assignment with the Texas Oil Co. His present address is in care of Texpet Apartado 267, Caracas, Venezuela. He expects to be in South America until October 1959.

1954

Richard H. Stevens, 2810 McNutt Ave., Maryville, Tennessee recently moved to a new home, and also added



Ralph A. Tuepker

HELP US KEEP YOUR ADDRESS CURRENT

If your address has changed, complete and tear out this slip and mail it immediately to MSM Alumni Association, Rolla, Mo. Thanks.

Name

My new address is

another girl to the Stevens' expanding family. She was born December 20, 1957 and her name is Donna Kaye. This brings the total to three daughters. Dick is still with the Aluminum Company of America and is chief metallographer at the Alcoa Works.

Daniel E. Groteke with the Badger Malleable and Manufacturing was recently promoted to plant superintendent from plant metallurgist. His address is 1737 Milwaukee Ave., So. Milwaukee, Wisc.

Thomas R. Fuller is a mining engineer (in training) at the Utah Copper Division, Kennecott Copper Corp., Salt Lake City, Utah, and resides at 1610 Garfield Ave. After graduation he spent two years in the army at Ft. Wood, Mo. Following his discharge he attended the Massachusetts Institute of Technology where he received his Master's degree in Industrial Management. Tom is married and wishes to advise alumni that Gwen Karen arrived, a new sister to their other daughter, Deborah Kay.

James R. Patterson, 1700 Stoddard Court, Cape Girardeau, Mo., is with the Potashnick Construction Co.

1955

Orval L. Sutton is a junior engineer with the Gardner-Denver Co., Quincy, Ill., and his residence address is Route 3, Palmyra, Missouri. The Suttons have two children, a boy, James Leslie, two years old and a daughter Pamela Kaye born August 19, 1958.

William L. McMorris, III, 25 So. 4th East, Price, Utah, is employed by Columbia-Geneva Steel Div., U. S. Steel Corp as preparation engineer at the Hellington Coal Cleaning Plant, Wellington, Utah.

Marlin K. Krieg, Petroleum Engineer, has joined the staff of Oilfield Engineer, Evansville, Indiana. He was formerly with Carter Oil Co., for three years in the Carmi (Ill.), district. Marlin, with his wife and two sons resides at 5300 Sherbrook Road, Evansville.

R. L. Jones is senior engineering metallurgist in the engineering test laboratory, Convair, Fort Worth Texas. His new address is 3517 College Ave.

1956

Richard S. Herndon received his Master's degree in Civil Engineering from the U. of Missouri, June 1958 and on September 6, 1958, he entered the field of matrimony and is living at 3228 Central, Kansas City 11, Mo. He is employed by the Corps of Engineers, Kansas City District.

Charles W. Saussele is in Detroit, Michigan with the Chrysler Corp. His address is 19368 Exeter, Detroit 3.

James L. Taylor's address is 160 S. Placer, Idaho Falls, Idaho.

1957

William L. Metcalf, Jr., has moved to 2201A Lee Ave., Granite City, Illinois. He is working at Emerson Electric Company in St. Louis, Mo. William and Miss Sara Watts were married April 18, 1958, in Granite City.

Larry D. Oppliger is a teaching assistant and graduate student at the University of Wisconsin in the physics department. His address is 1618 Chadbourne, Madison, Wisconsin.

Robert W. Cowan, Jr., has moved to Midland, Texas and is living at a Texas Company camp 30 miles from Midland. His address is Star Route, Mabee Camp Midland.

Gilbert F. Metz, Jr., is with the re-

search department of Pittsburgh Plate Glass Co., Creighton, Pa. His address is Apt. 39, Northway Apts., 5900 Babcock Blvd., Pittsburgh 37, Pa.

Raymond D. Zook, 3232 Eshcol, Zion, Ill., is with Fonsteel Metallurgical Corp., North Chicago, Ill.

Charles Lee Miller is with the Illinois State Highway Dept., with headquarters in Carbondale, Ill., and residence at 211 W. Elm.

Harold G. O'Neal is in Hobbs, New Mexico, employed by the Magnolia Petroleum Co. His address 505 North Thorp, Hobbs.

James G. Wright is service engineer, Mechanical Div., Hagan Chemical and Controls Inc., with headquarters in St. Louis, Mo. His residential address is 9069 W. Swan Circle, Brentwood 17, Mo.

Waymon L. Johnston has changed his employment. He is with Lane-Wells Company, Houston, Texas, and was recently promoted to field electrical-logging engineer and has been assigned to the company's office at Fort Morgan, Colorado. His mailing address is P. O. Box 92.

Jerry J. Webb is now in Huntsville, Alabama, 123 Bib Road.

David Bates is working as assistant engineer for Marley Company, Kansas City, Mo. His address is 2516 Queen Ridge Drive, Kansas City, Mo.

1958

Second Lt. Thomas C. Metcalf, Jr. has completed the company-grade officer basic course at the Army Engineer School, Ft. Belvoir, Va.

Second Lt. Thomas E. Light also has completed the company-grade officer basic course at Ft. Belvoir, Va.

J. E. Almond has a change of address to 815 Lydia Lane, Dallas 17, Texas. He is a junior electrical engineer with the Magnolia Pipe Line Company.

Wayne S. Bailey has accepted a position with the District Public Works office, Ninth Naval District, Great Lakes, Ill., as mechanical engineer.

Craig G. Roberts is taking post-graduate work at the University of California, Berkeley. His address is 2560 Hilgard St., Berkeley.

Robert Ruch has joined the staff of the U. S. Navy Electronics Laboratory, San Diego, California and is working on vibration analysis as pertinent to submarine quieting, which is an important laboratory program.

MSM ALUMNI ASSOCIATION

ROLLA

MISSOURI

TO