

01 Jan 2015

Real Time Mission Planning

Emad William Saad

Stefan Richard Bieniawski

Riley Pigg

Paul Edward

et. al. For a complete list of authors, see https://scholarsmine.mst.edu/ele_comeng_facwork/36

Follow this and additional works at: https://scholarsmine.mst.edu/ele_comeng_facwork



Part of the [Electrical and Computer Engineering Commons](#)

Recommended Citation

E. W. Saad et al., "Real Time Mission Planning," *U.S. Patents*, Jan 2015.

This Patent is brought to you for free and open access by Scholars' Mine. It has been accepted for inclusion in Electrical and Computer Engineering Faculty Research & Creative Works by an authorized administrator of Scholars' Mine. This work is protected by U. S. Copyright Law. Unauthorized use including reproduction for redistribution requires the permission of the copyright holder. For more information, please contact scholarsmine@mst.edu.



US009064222B2

(12) **United States Patent**
Saad et al.

(10) **Patent No.:** **US 9,064,222 B2**
(45) **Date of Patent:** **Jun. 23, 2015**

(54) **REAL TIME MISSION PLANNING**
(75) Inventors: **Emad William Saad**, Renton, WA (US);
Stefan Richard Bieniawski, Seattle, WA
(US); **Paul Edward Riley Pigg**, St.
Louis, MO (US); **John Lyle Vian**,
Renton, WA (US); **Paul Michael**
Robinette, Phoenix, AZ (US); **Donald**
Coolidge Wunsch, II, Rolla, MO (US)

6,493,609 B2 * 12/2002 Johnson 701/3
6,910,892 B2 * 6/2005 Lechner 434/43
7,154,496 B1 * 12/2006 Engel et al. 345/419
7,693,624 B2 * 4/2010 Duggan et al. 701/24
7,813,888 B2 * 10/2010 Vian et al. 702/113
7,894,952 B2 * 2/2011 Donovan et al. 701/36
8,515,609 B2 * 8/2013 McAndrew et al. 701/23
8,612,085 B2 * 12/2013 Flohr et al. 701/27
2001/0019328 A1 * 9/2001 Schwuttke et al. 345/440
2001/0023390 A1 * 9/2001 Gia 701/301
2002/0161489 A1 * 10/2002 Johnson 701/4

(73) Assignee: **THE BOEING COMPANY**, Chicago,
IL (US)

(Continued)

(*) Notice: Subject to any disclaimer, the term of this
patent is extended or adjusted under 35
U.S.C. 154(b) by 646 days.

JP H06344279 A 12/1994
JP 2001353678 A 12/2001

FOREIGN PATENT DOCUMENTS

(Continued)

(21) Appl. No.: **12/780,621**

OTHER PUBLICATIONS

(22) Filed: **May 14, 2010**

Valenti et al.; "Implementation of a Manned Vehicle—UAV Mission System", AIAA Guidance, Navigation, and Control Conference and Exhibit; Aug. 16-19, 2004, (Valenti_08192004.pdf; pp. 16).*

(65) **Prior Publication Data**

US 2011/0283285 A1 Nov. 17, 2011

(Continued)

(51) **Int. Cl.**
G06F 9/46 (2006.01)
G06Q 10/06 (2012.01)
G05D 1/00 (2006.01)
G06Q 10/10 (2012.01)

Primary Examiner — Emerson Puentes
Assistant Examiner — Hiren Patel
(74) *Attorney, Agent, or Firm* — Yee & Associates, P.C.

(52) **U.S. Cl.**
CPC **G06Q 10/0631** (2013.01); **G05D 1/00**
(2013.01); **G06Q 10/103** (2013.01)

(57) **ABSTRACT**

(58) **Field of Classification Search**
None
See application file for complete search history.

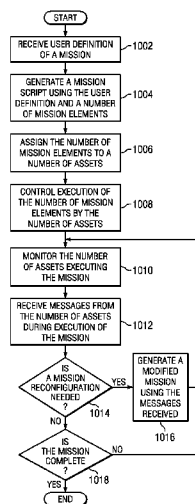
The different advantageous embodiments provide a system comprising a number of computers, a graphical user interface, first program code stored on the computer, and second program code stored on the computer. The graphical user interface is executed by a computer in the number of computers. The computer is configured to run the first program code to define a mission using a number of mission elements. The computer is configured to run the second program code to generate instructions for a number of assets to execute the mission and monitor the number of assets during execution of the mission.

(56) **References Cited**

U.S. PATENT DOCUMENTS

5,642,467 A * 6/1997 Stover et al. 700/250
5,951,609 A * 9/1999 Hanson et al. 701/13
6,122,572 A * 9/2000 Yavnai 701/23

24 Claims, 9 Drawing Sheets



(56)

References Cited

U.S. PATENT DOCUMENTS

2003/0190587 A1* 10/2003 Lechner 434/43
 2004/0030463 A1* 2/2004 Stockdale et al. 701/3
 2005/0004723 A1* 1/2005 Duggan et al. 701/24
 2005/0203967 A1* 9/2005 Matsui 707/202
 2006/0184291 A1* 8/2006 Paradis et al. 701/23
 2006/0184292 A1 8/2006 Appleby et al.
 2006/0235739 A1 10/2006 Levis et al.
 2007/0021879 A1* 1/2007 DelNero et al. 701/23
 2007/0021880 A1* 1/2007 Appleby et al. 701/23
 2007/0032920 A1* 2/2007 Dapp et al. 701/3
 2007/0061053 A1* 3/2007 Zeitzew 701/1
 2008/0033684 A1 2/2008 Vian et al.
 2008/0051997 A1* 2/2008 Rosenberg 701/211
 2008/0125933 A1* 5/2008 Williams et al. 701/30
 2009/0076665 A1* 3/2009 Hoisington et al. 701/2
 2009/0125163 A1* 5/2009 Duggan et al. 701/2
 2009/0125225 A1* 5/2009 Hussain et al. 701/200
 2009/0300180 A1* 12/2009 Dehaan et al. 709/225
 2009/0326735 A1* 12/2009 Wood et al. 701/2
 2010/0017049 A1* 1/2010 Swearingen et al. 701/3
 2010/0084513 A1* 4/2010 Garipey et al. 244/190
 2010/0100269 A1* 4/2010 Ekhaguere et al. 701/26
 2010/0114633 A1* 5/2010 Sislak et al. 705/7
 2010/0198514 A1* 8/2010 Miralles 701/302
 2010/0312388 A1* 12/2010 Jang et al. 700/248
 2011/0015816 A1* 1/2011 Dow et al. 701/23

2011/0082717 A1* 4/2011 Saad et al. 705/7.13
 2011/0130916 A1* 6/2011 Mayer 701/33
 2011/0184604 A1* 7/2011 Franke et al. 701/23
 2011/0246551 A1* 10/2011 Giancaspro et al. 709/202
 2014/0142785 A1* 5/2014 Fuentes et al. 701/2

FOREIGN PATENT DOCUMENTS

JP 2006106919 A 4/2006
 JP 2007093045 A 4/2007
 WO WO2010076787 A2 7/2010

OTHER PUBLICATIONS

Bieniawski et al., "Exploring Health-Enabled Mission concepts in the Vehicle Swarm Technology Laboratory", AIAA Infotech@Aerospace Conference, Apr. 6-9, 2009, Seattle, Washington, American Institute of Aeronautics and Astronautics, Inc., 2009, pp. 1-13.
 International Search Report and Written Opinion of the International Searching Authority, dated Jan. 2, 2013, regarding Application No. PCT/US2011/032459 (WO2011142933), 10 pages.
 Extended European Search Report, dated Feb. 20, 2015, regarding Application No. EP11722637.3, 6 pages.
 English Translation of Notice of Reasons for Rejection, dated Mar. 3, 2015, regarding Japanese Patent Application No. 2013-510105, 2 pages.

* cited by examiner

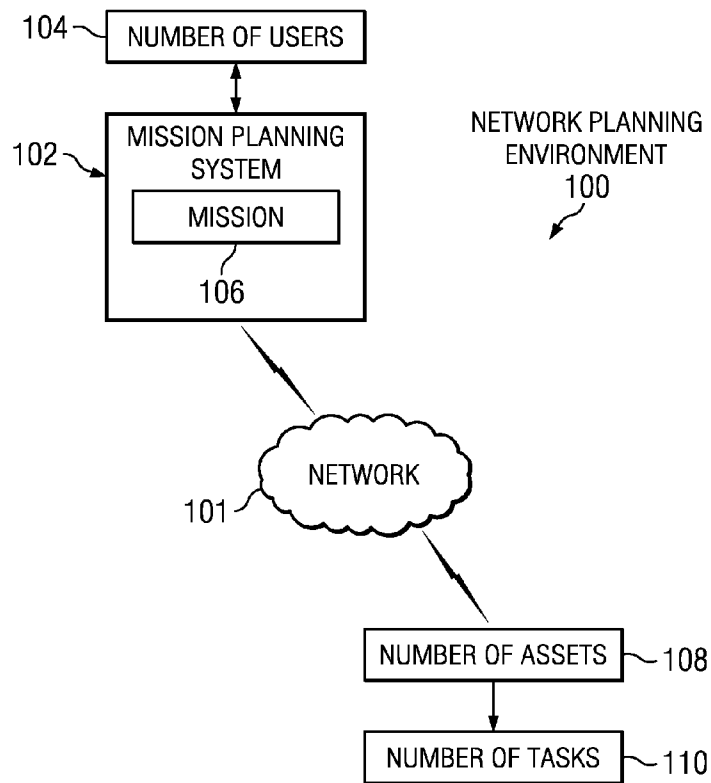


FIG. 1

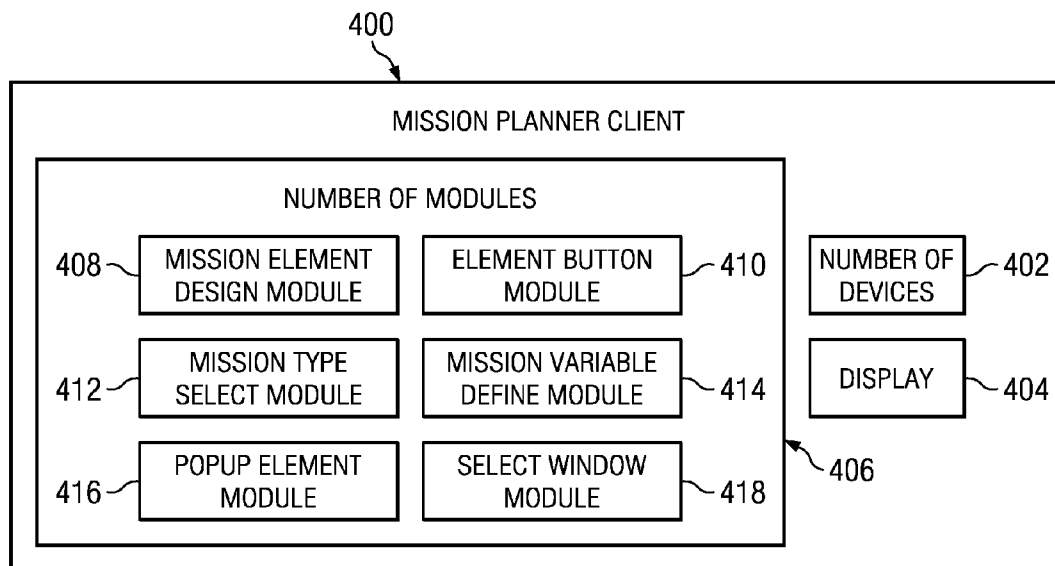


FIG. 4

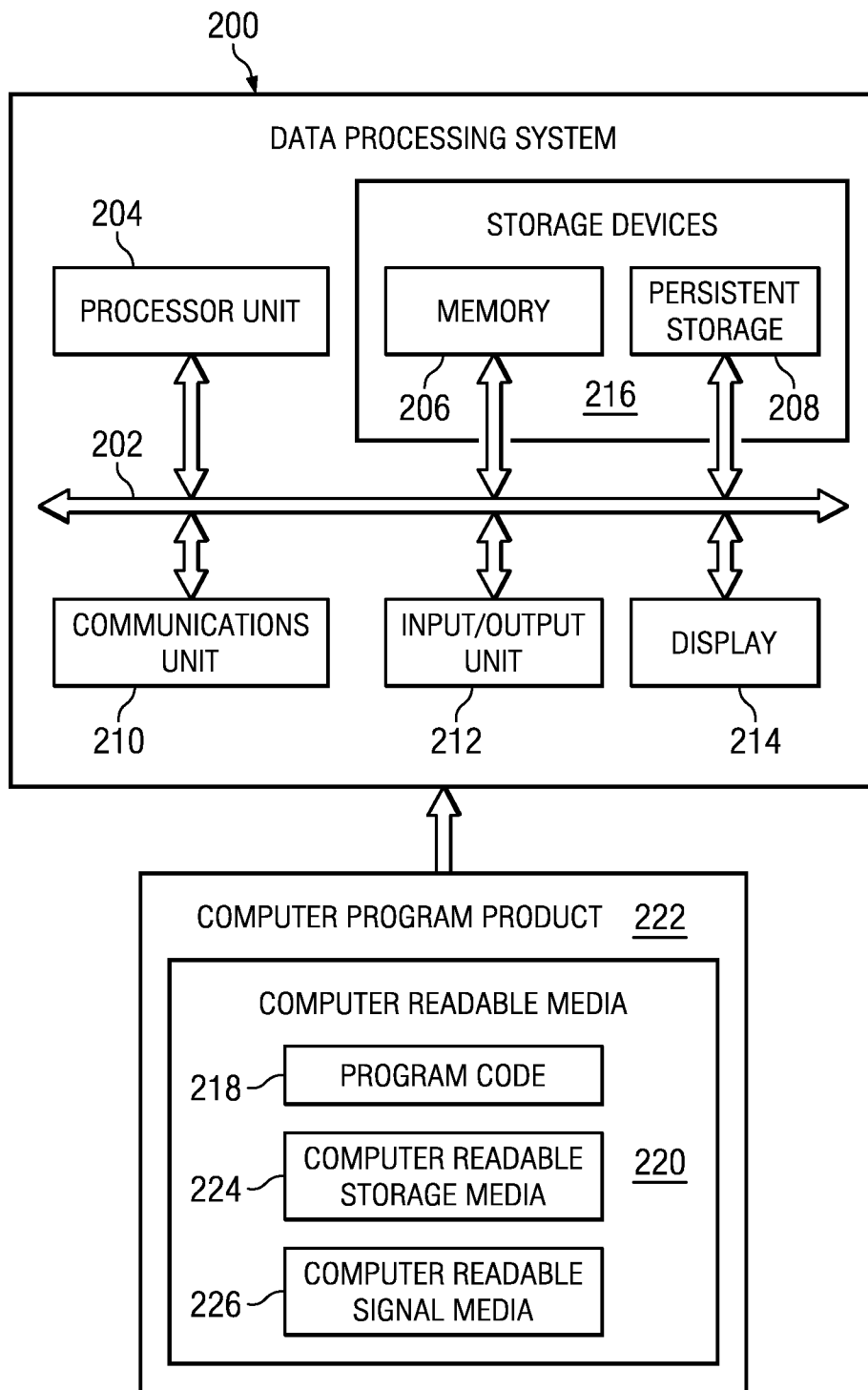


FIG. 2

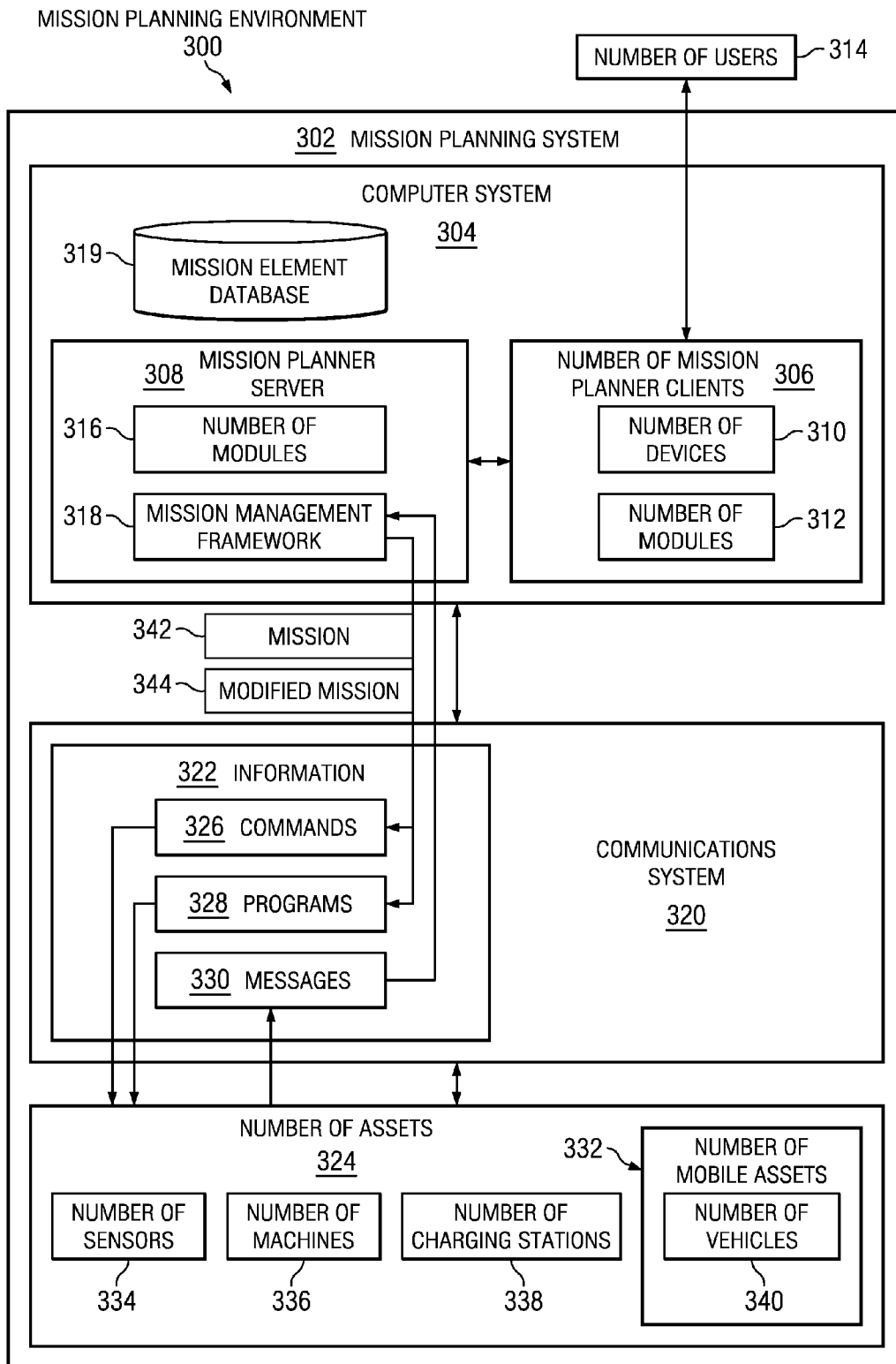


FIG. 3

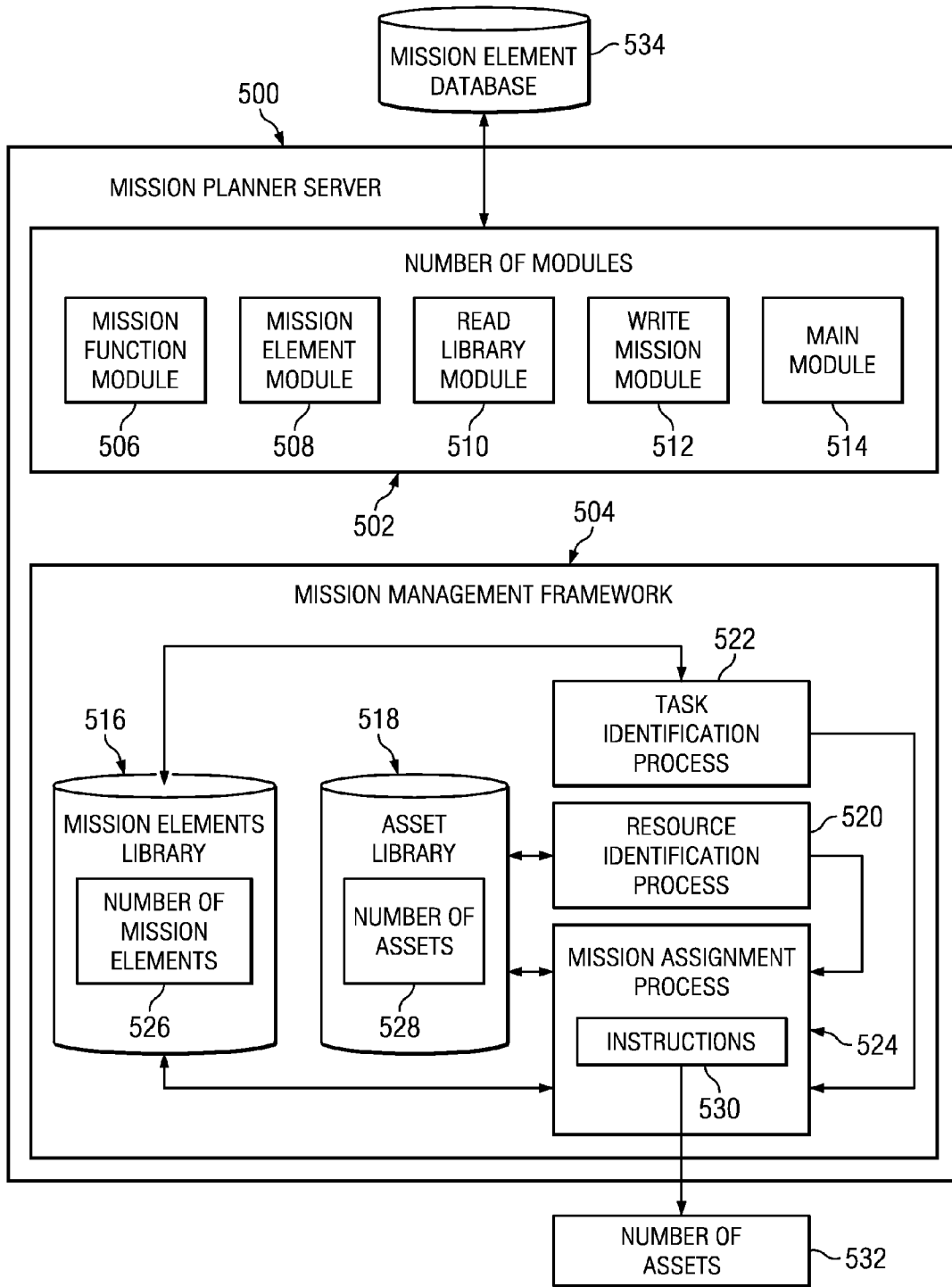


FIG. 5

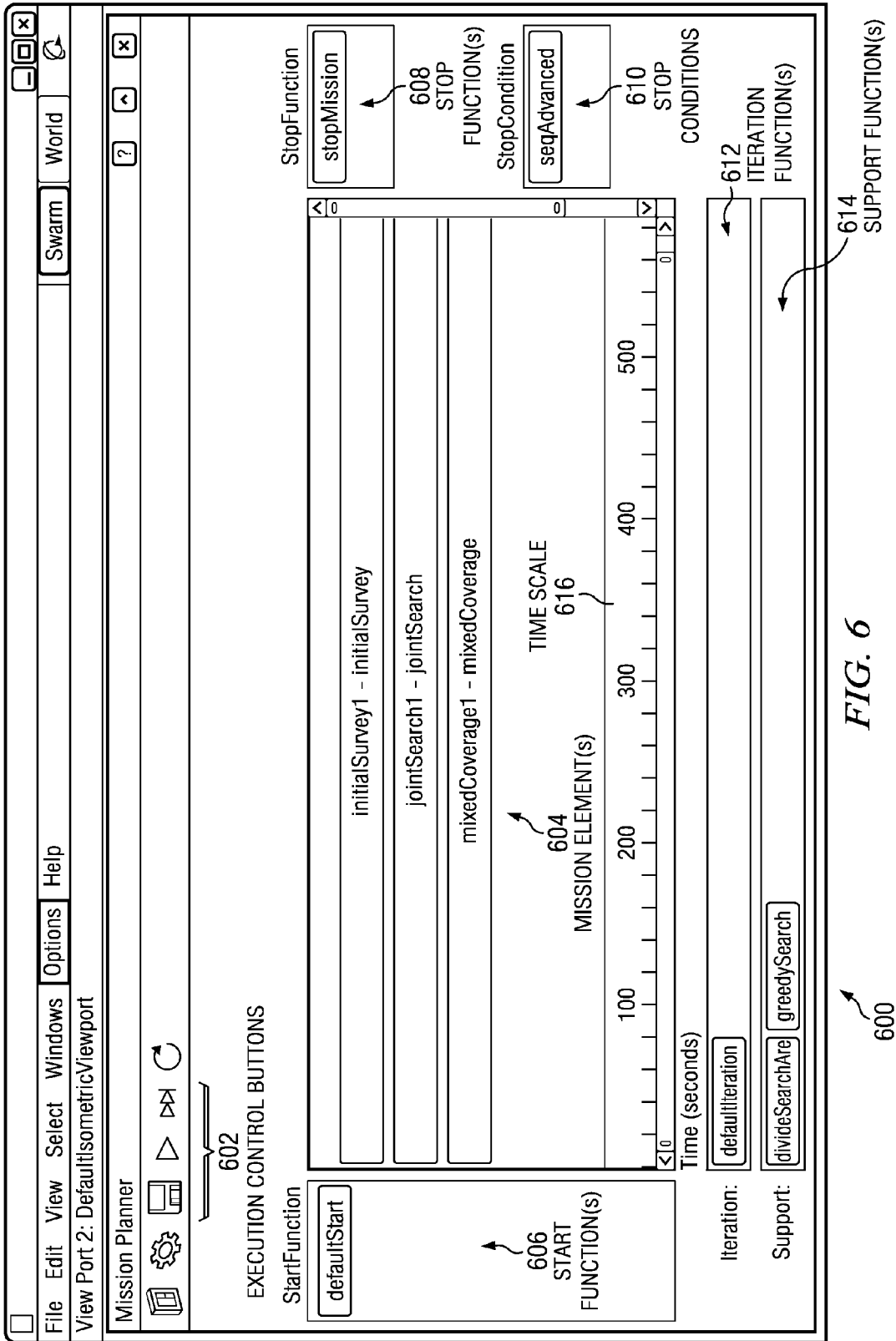


FIG. 6

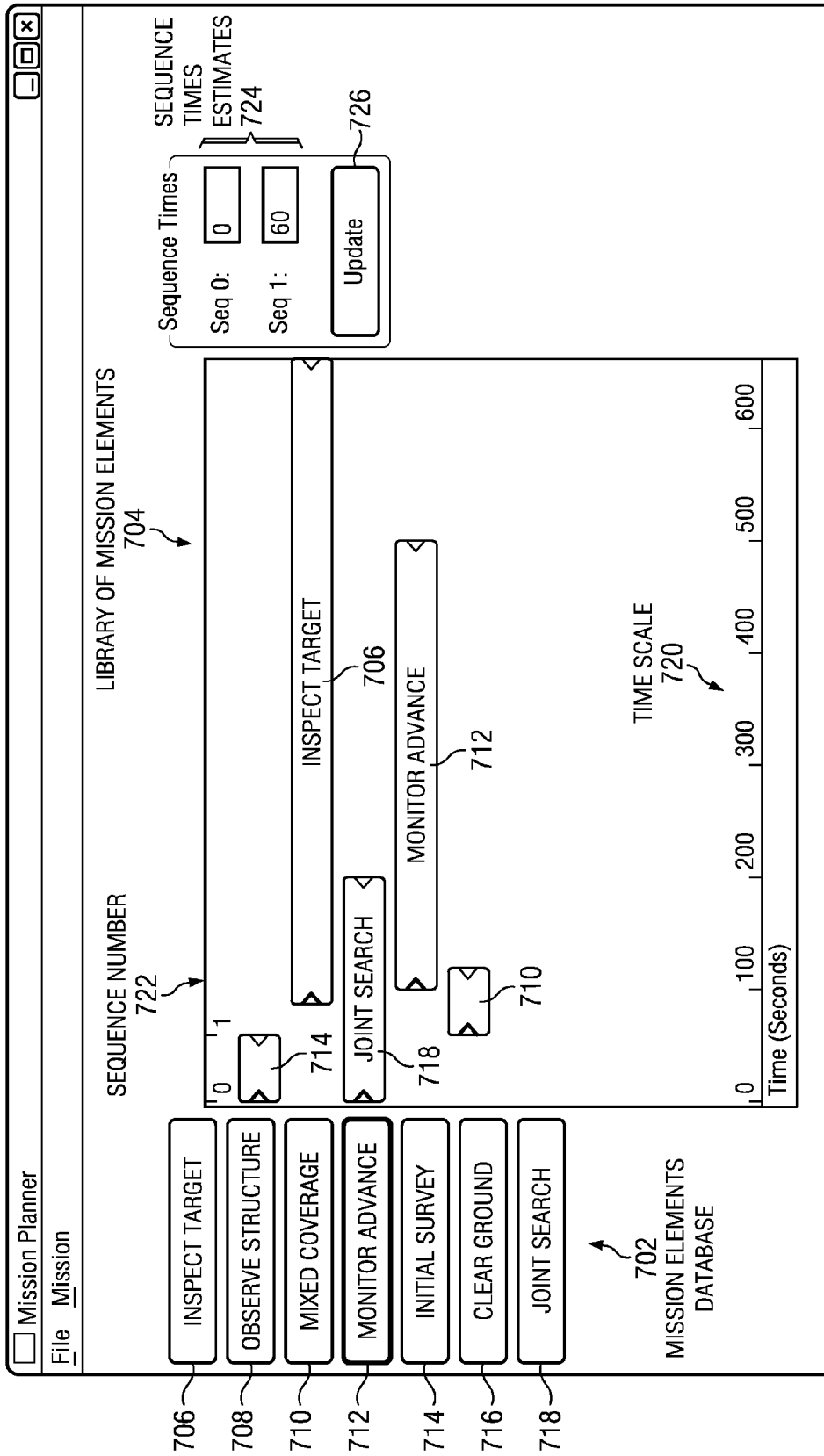
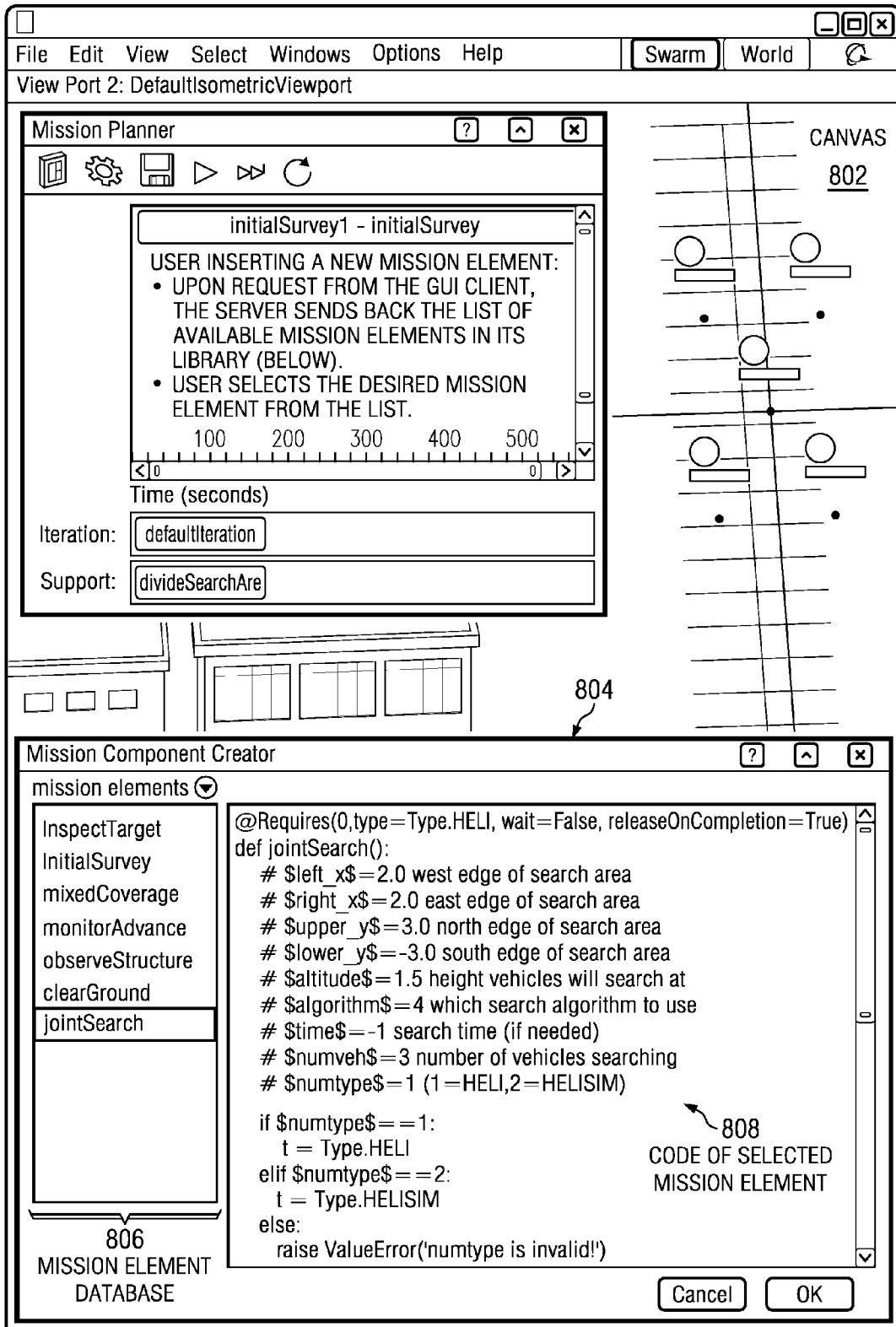


FIG. 7

700

FIG. 8

800



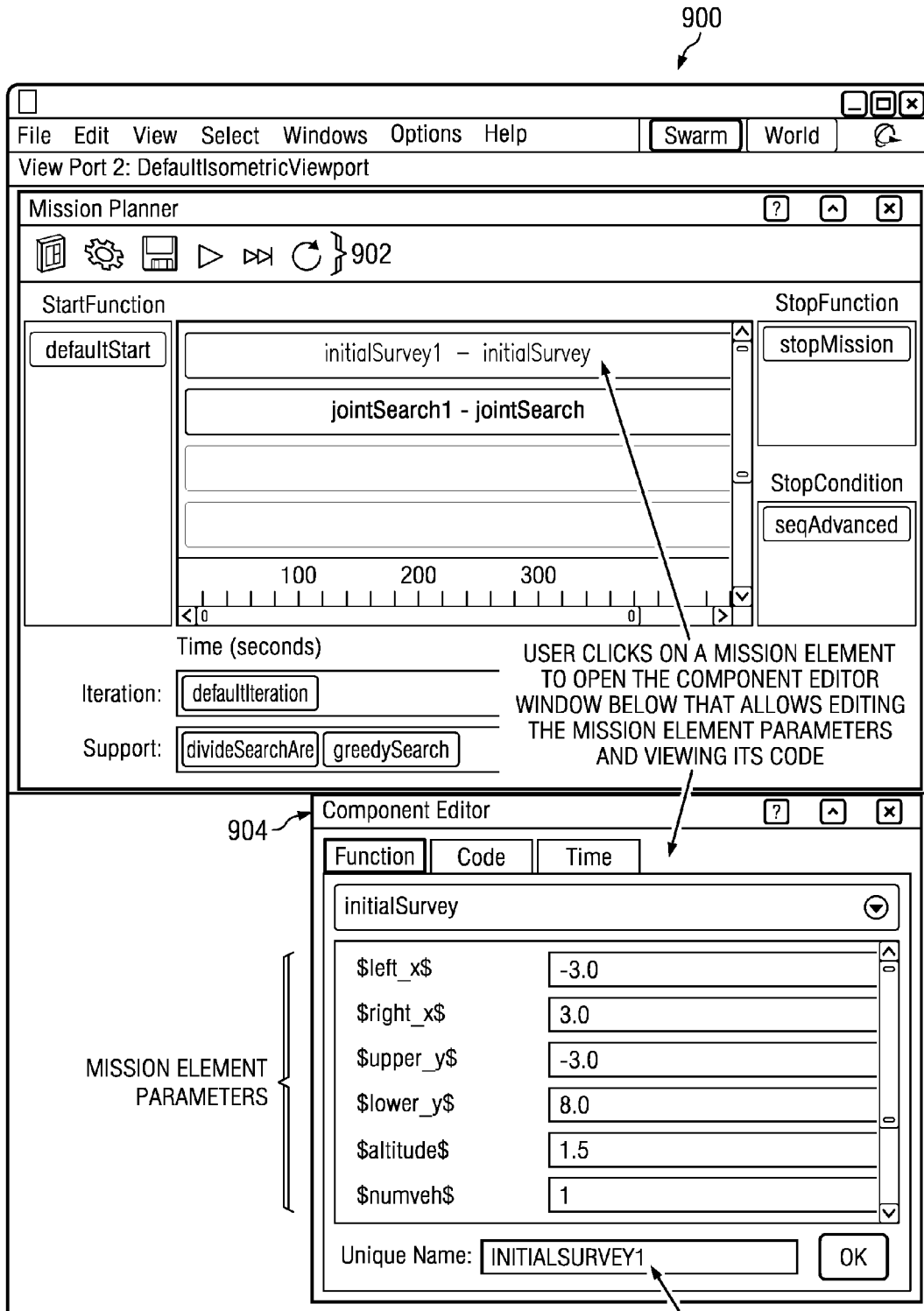


FIG. 9

USER CAN INSERT MULTIPLE INSTANCES OF THE SAME MISSION ELEMENT (FOR EXAMPLE RUNNING AT DIFFERENT TIMES OR LOCATIONS) AND THEY GET UNIQUE NAMES

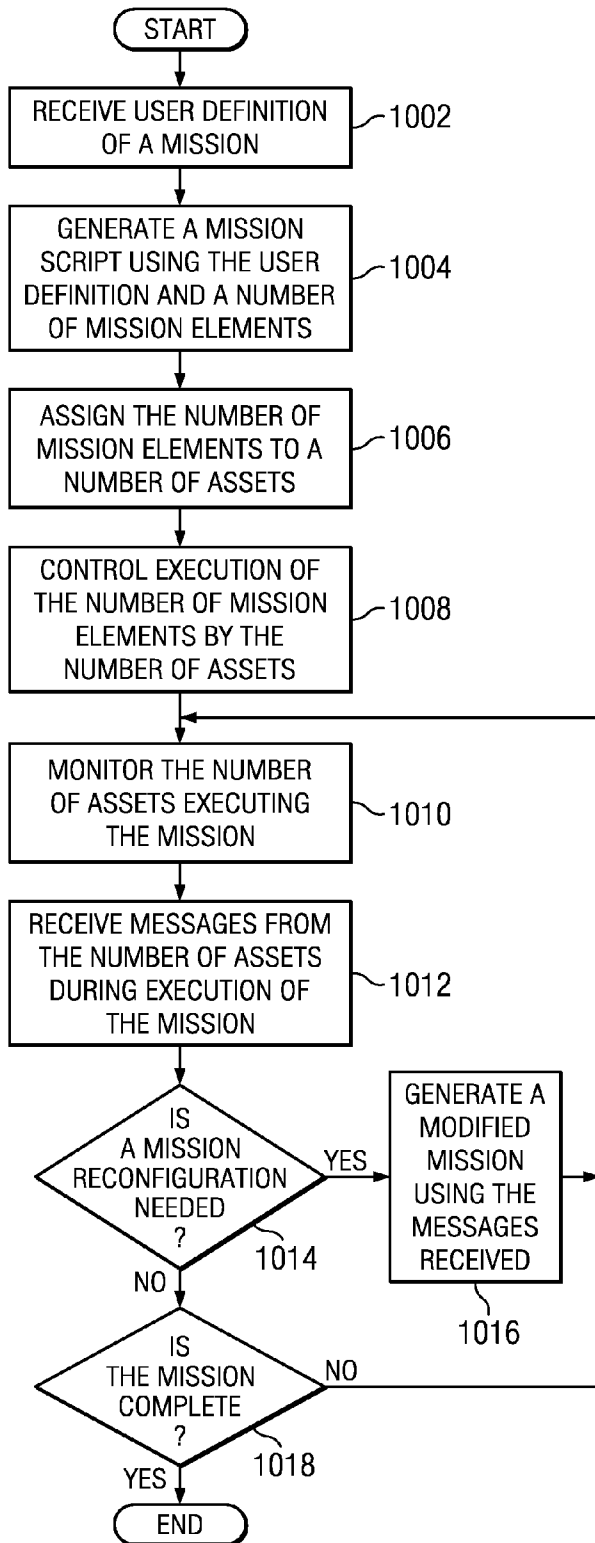


FIG. 10

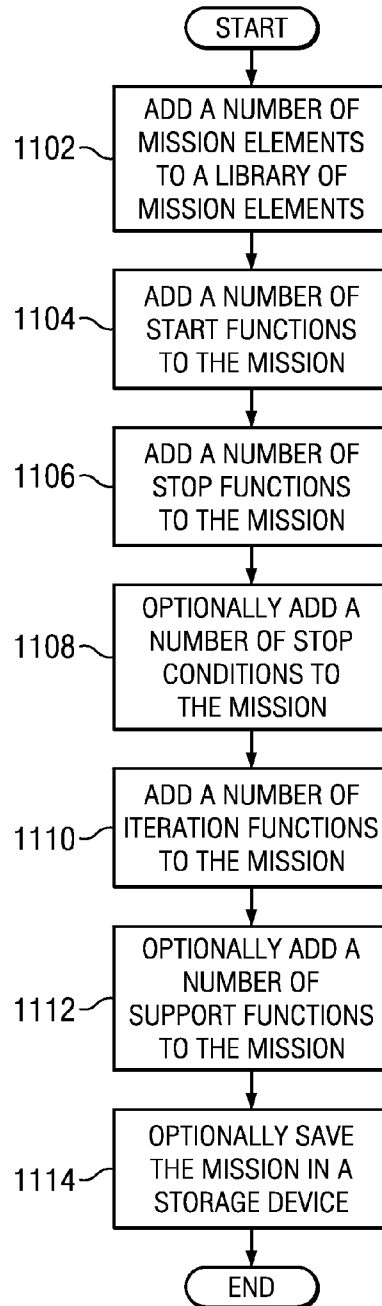


FIG. 11

REAL TIME MISSION PLANNING

BACKGROUND INFORMATION

1. Field

The present disclosure relates generally to missions and, in particular, to a method and system for mission planning. Still more particularly, the present disclosure provides a method and system for defining, executing, and modifying a mission in real-time.

2. Background

Mission planning involves various resources and tasks that come together to form a mission. Different resources may be deployed for different tasks that make up a mission, for example. Complex missions must be manually scripted to manage multiple resources and multiple tasks for a single mission, and cannot be changed during execution of the mission.

Missions are typically scripted manually and completed offline before the missions are run by a computer system. Many of these current systems are specific to a single mission type, such as an area search mission for example. The existing solutions are not practical for dynamic applications where missions need to be created and modified on the fly. Once execution of the mission begins, the mission cannot be modified during execution.

Therefore, it would be advantageous to have a method and apparatus that addresses one or more of the issues discussed above.

SUMMARY

The different advantageous embodiments provide a system comprising a number of computers, a graphical user interface, first program code stored on the computer, and second program code stored on the computer. The graphical user interface is executed by a computer in the number of computers. The computer is configured to run the first program code to define a mission using a number of mission elements. The computer is configured to run the second program code to generate instructions for a number of assets to execute the mission and monitor the number of assets during execution of the mission.

The different advantageous embodiments further provide a method for mission planning. A computer receives a user definition of a mission. A mission script is generated using the user definition and a number of mission elements. The number of mission elements is assigned to a number of assets. Execution of the number of mission elements by the number of assets is controlled. The number of assets executing the mission is monitored.

The different advantageous embodiments further provide a computer program product for mission planning comprising a computer recordable storage medium and program code stored on the computer recordable storage medium. The program code receives a user definition of a mission, generates a mission script using the user definition and a number of mission elements, assigns the number of mission elements to a number of assets, generates instructions for the number of assets to execute the mission using the number of mission elements, and monitors the number of assets executing the mission.

The features, functions, and advantages can be achieved independently in various embodiments of the present disclo-

sure or may be combined in yet other embodiments in which further details can be seen with reference to the following description and drawings.

BRIEF DESCRIPTION OF THE DRAWINGS

The novel features believed characteristic of the advantageous embodiments are set forth in the appended claims. The advantageous embodiments, however, as well as a preferred mode of use, further objectives and advantages thereof, will best be understood by reference to the following detailed description of an advantageous embodiment of the present disclosure when read in conjunction with the accompanying drawings, wherein:

FIG. 1 is an illustration of a network planning environment in which an advantageous embodiment may be implemented;

FIG. 2 is an illustration of a data processing system in accordance with an advantageous embodiment;

FIG. 3 is an illustration of a mission planning environment in accordance with an advantageous embodiment;

FIG. 4 is an illustration of a mission planner client in accordance with an advantageous embodiment;

FIG. 5 is an illustration of a mission planner server in accordance with an advantageous embodiment;

FIG. 6 is an illustration of a graphical user interface in accordance with an advantageous embodiment;

FIG. 7 is an illustration of a graphical user interface in accordance with an advantageous embodiment;

FIG. 8 is an illustration of a graphical user interface in accordance with an advantageous embodiment;

FIG. 9 is an illustration of a graphical user interface in accordance with an advantageous embodiment;

FIG. 10 is an illustration of a flowchart illustrating a process for mission planning in accordance with an advantageous embodiment; and

FIG. 11 is an illustration of a flowchart illustrating a process for defining a mission in accordance with an advantageous embodiment.

DETAILED DESCRIPTION

With reference now to the figures and in particular with reference to FIGS. 1-2, exemplary diagrams of data processing environments are provided in which the advantageous embodiments of the present invention may be implemented. It should be appreciated that FIGS. 1-2 are only exemplary and are not intended to assert or imply any limitation with regard to the environments in which different embodiments may be implemented. Many modifications to the depicted environments may be made.

With reference now to the figures, FIG. 1 depicts a pictorial representation of a network planning environment in which the advantageous embodiments of the present invention may be implemented. Network planning environment 100 is a network of computers in which embodiments may be implemented. Network planning environment 100 contains network 101, which is the medium used to provide communications links between various devices and computers connected together within network planning environment 100. Network 101 may include connections, such as wire, wireless communication links, or fiber optic cables.

In the depicted example, mission planning system 102 connects to network 101 along with number of assets 108. Mission planning system 102 may include a number of servers and a number of clients, in an advantageous embodiment. In another advantageous embodiment, servers and clients of mission planning system 102 may be located in a number of

locations and connect to network **101**, for example. Mission planning system **102** may include, for example, data processing systems, personal computers, and/or network computers.

Number of users **104** interacts with mission planning system **102** to plan mission **106**, monitor mission **106** in a real-time environment, and/or modify mission **106** in a real-time environment. Number of users **104** may include human users, robotic and/or machine users, program code, and/or any other suitable user of mission planning system **102**.

Number of assets **108** may exchange data with mission planning system **102** through a wireless communications link or through any other type of communications link using network **101**. In these examples, number of assets **108** may be computers and/or assets controlled by a computer. Assets controlled by a computer may include, for example, without limitation, mobile assets, vehicles, sensors, machines, charging stations, and/or any other suitable asset. Network planning environment **100** may include additional servers processes, clients processes, and other devices not shown.

Number of assets **108** may execute number of tasks **110** in order to accomplish mission **106**, in an illustrative example. Mission **106** may be a collection of tasks. Number of tasks **110** may combine to form mission **106**, for example.

In the depicted example, network planning environment **100** is the Internet with network **101** representing a world-wide collection of networks and gateways that use the Transmission Control Protocol/Internet Protocol (TCP/IP) suite of protocols to communicate with one another. Of course, network planning environment **100** also may be implemented as a number of different types of networks, such as for example, an intranet, a local area network (LAN), or a wide area network (WAN). FIG. 1 is intended as an example, and not as an architectural limitation for different embodiments.

Turning now to FIG. 2, a block diagram of a data processing system is depicted in accordance with an advantageous embodiment. Data processing system **200** is an example of a data processing system that may be used to implement servers and clients, such as mission planning system **102** and number of assets **108**.

In this illustrative example, data processing system **200** includes communications fabric **202**, which provides communications between processor unit **204**, memory **206**, persistent storage **208**, communications unit **210**, input/output (I/O) unit **212**, and display **214**.

Processor unit **204** serves to execute instructions for software that may be loaded into memory **206**. Processor unit **204** may be a number of processors, a multi-processor core, or some other type of processor, depending on the particular implementation. A number, as used herein with reference to an item, means one or more items. Further, processor unit **204** may be implemented using a number of heterogeneous processor systems in which a main processor is present with secondary processors on a single chip. As another illustrative example, processor unit **204** may be a symmetric multi-processor system containing multiple processors of the same type.

Memory **206** and persistent storage **208** are examples of storage devices **216**. A storage device is any piece of hardware that is capable of storing information, such as, for example, without limitation, data, program code in functional form, and/or other suitable information either on a temporary basis and/or a permanent basis. Memory **206**, in these examples, may be, for example, a random access memory or any other suitable volatile or non-volatile storage device. Persistent storage **208** may take various forms depending on the particular implementation.

For example, persistent storage **208** may contain one or more components or devices. For example, persistent storage **208** may be a hard drive, a flash memory, a rewritable optical disk, a rewritable magnetic tape, or some combination of the above. The media used by persistent storage **208** also may be removable. For example, a removable hard drive may be used for persistent storage **208**.

Communications unit **210**, in these examples, provides for communications with other data processing systems or devices. In these examples, communications unit **210** is a network interface card. Communications unit **210** may provide communications through the use of either or both physical and wireless communications links.

Input/output unit **212** allows for input and output of data with other devices that may be connected to data processing system **200**. For example, input/output unit **212** may provide a connection for user input through a keyboard, a mouse, and/or some other suitable input device. Further, input/output unit **212** may send output to a printer. Display **214** provides a mechanism to display information to a user.

Instructions for the operating system, applications and/or programs may be located in storage devices **216**, which are in communication with processor unit **204** through communications fabric **202**. In these illustrative examples the instructions are in a functional form on persistent storage **208**. These instructions may be loaded into memory **206** for execution by processor unit **204**. The processes of the different embodiments may be performed by processor unit **204** using computer implemented instructions, which may be located in a memory, such as memory **206**.

These instructions are referred to as program code, computer usable program code, or computer readable program code that may be read and executed by a processor in processor unit **204**. The program code in the different embodiments may be embodied on different physical or tangible computer readable media, such as memory **206** or persistent storage **208**.

Program code **218** is located in a functional form on computer readable media **220** that is selectively removable and may be loaded onto or transferred to data processing system **200** for execution by processor unit **204**. Program code **218** and computer readable media **220** form computer program product **222** in these examples. In one example, computer readable media **220** may be computer readable storage media **224** or computer readable signal media **226**. Computer readable storage media **224** may include, for example, an optical or magnetic disk that is inserted or placed into a drive or other device that is part of persistent storage **208** for transfer onto a storage device, such as a hard drive, that is part of persistent storage **208**. Computer readable storage media **224** also may take the form of a persistent storage, such as a hard drive, a thumb drive, or a flash memory, that is connected to data processing system **200**. In some instances, computer readable storage media **224** may not be removable from data processing system **200**. In these illustrative examples, computer readable storage media **224** is a non-transitory computer readable storage medium.

Alternatively, program code **218** may be transferred to data processing system **200** using computer readable signal media **226**. Computer readable signal media **226** may be, for example, a propagated data signal containing program code **218**. For example, computer readable signal media **226** may be an electromagnetic signal, an optical signal, and/or any other suitable type of signal. These signals may be transmitted over communications links, such as wireless communications links, optical fiber cable, coaxial cable, a wire, and/or any other suitable type of communications link. In other

words, the communications link and/or the connection may be physical or wireless in the illustrative examples.

In some advantageous embodiments, program code **218** may be downloaded over a network to persistent storage **208** from another device or data processing system through computer readable signal media **226** for use within data processing system **200**. For instance, program code stored in a computer readable storage medium in a server data processing system may be downloaded over a network from the server to data processing system **200**. The data processing system providing program code **218** may be a server computer, a client computer, or some other device capable of storing and transmitting program code **218**.

The different components illustrated for data processing system **200** are not meant to provide architectural limitations to the manner in which different embodiments may be implemented. The different advantageous embodiments may be implemented in a data processing system including components in addition to or in place of those illustrated for data processing system **200**. Other components shown in FIG. **2** can be varied from the illustrative examples shown. The different embodiments may be implemented using any hardware device or system capable of running program code. As one example, the data processing system may include organic components integrated with inorganic components and/or may be comprised entirely of organic components excluding a human being. For example, a storage device may be comprised of an organic semiconductor.

As another example, a storage device in data processing system **200** is any hardware apparatus that may store data. Memory **206**, persistent storage **208**, and computer readable media **220** are examples of storage devices in a tangible form.

In another example, a bus system may be used to implement communications fabric **202** and may be comprised of one or more buses, such as a system bus or an input/output bus. Of course, the bus system may be implemented using any suitable type of architecture that provides for a transfer of data between different components or devices attached to the bus system. Additionally, a communications unit may include one or more devices used to transmit and receive data, such as a modem or a network adapter. Further, a memory may be, for example, memory **206**, or a cache such as found in an interface and memory controller hub that may be present in communications fabric **202**.

As used herein, the phrase "at least one of", when used with a list of items, means that different combinations of one or more of the items may be used and only one of each item in the list may be needed. For example, "at least one of item A, item B, and item C" may include, for example, without limitation, item A or item A and item B. This example also may include item A, item B, and item C or item B and item C.

As used herein, when a first component is connected to a second component, the first component may be connected to the second component without any additional components. The first component also may be connected to the second component by one or more other components. For example, one electronic device may be connected to another electronic device without any additional electronic devices between the first electronic device and the second electronic device. In some cases, another electronic device may be present between the two electronic devices connected to each other.

The different advantageous embodiments recognize and take into account that current mission planning systems involve scripting missions offline then running the missions after they are completed offline. Many of these current systems are specific to a single mission type, such as an area search mission for example. The existing solutions are not

practical for dynamic applications where missions need to be created and modified on the fly. These current systems are rigid and do not provide for modifying a mission once execution starts. The systems currently available require a user to be able to write code and script the mission manually as well. Manual scripting of missions is labor extensive and very costly. In addition, manually scripted missions require more extensive testing since they are built from scratch and the testing process increases with the mission complexity.

Thus, the different advantageous embodiments provide a system comprising a number of computers, a graphical user interface, first program code stored on the computer, and second program code stored on the computer. The graphical user interface is executed by a computer in the number of computers. The computer is configured to run the first program code to define a mission using a number of mission elements. The computer is configured to run the second program code to generate instructions for a number of assets to execute the mission and monitor the number of assets during execution of the mission.

The different advantageous embodiments further provide a method for mission planning. A computer receives a user definition of a mission. A mission script is generated using the user definition and a number of mission elements. The number of mission elements is assigned to a number of assets. Execution of the number of mission elements by the number of assets is controlled. The number of assets executing the mission is monitored.

The different advantageous embodiments further provide a computer program product for mission planning comprising a computer recordable storage medium and program code stored on the computer recordable storage medium. The program code receives a user definition of a mission, generates a mission script using the user definition and a number of mission elements, assigns the number of mission elements to a number of assets, generates instructions for the number of assets to execute the mission using the number of mission elements, and monitors the number of assets executing the mission.

With reference now to FIG. **3**, an illustration of a mission planning environment is depicted in accordance with an advantageous embodiment. Mission planning environment **300** may be implemented in a network environment, such as network planning environment **100** in FIG. **1**, for example.

Mission planning environment **300** may be any type of environment suitable for generating, monitoring, updating, modifying, and/or approving missions, for example. Mission planning environment **300** includes mission planning system **302**. Mission planning system **302** is an illustrative example of mission planning system **102** in FIG. **1**. Mission planning system **302** defines, executes, and monitors a number of missions involving a number of assets in the different advantageous embodiments.

Mission planning system **302** includes computer system **304**. Computer system **304** may be implemented as a number of computers and/or data processing systems, such as data processing system **200** in FIG. **2**. Computer system **304** may include number of mission planner clients **306** and mission planner server **308**. In one advantageous embodiment, computer system **304** may be implemented using a number of data processing systems, where each data processing system includes an instance of number of mission planner clients **306** and connects to mission planner server **308** at a central data processing system using a network, such as network **101** in FIG. **1**, for example. In another advantageous embodiment, number of mission planner clients **306** and mission planner

server **308** may be implemented on the same data processing system and accessed using a number of different data processing systems, for example.

Number of mission planner clients **306** is a graphical user interface used to remotely build missions. Number of mission planner clients **306** may include number of devices **310** and number of modules **312**. Number of devices **310** may include, for example, without limitation, a display, data-glove, a personal digital assistant, a laptop, mouse, trackpad, keyboard, joystick, a touchscreen, an optical interface, a visual interface, a tactile interface, video console, wireless controller, wireless three dimensional (3D) controller, and/or any other suitable device. In one illustrative example, a wireless 3D controller may be a remote control pointing device that includes a number of accelerometers and an infrared detector for detecting motion in three dimensional space. In another illustrative example, a wireless 3D controller may include a number of accelerometers used to directly control a number of mobile assets when given control by a mission element in the mission generated by mission planner server **308**. In an advantageous embodiment, number of devices **310** may be available for use with specialized mission elements generated by mission planner server **308**, for example.

Number of mission planner clients **306** communicates with mission planner server **308** through a messaging format, such as, for example, without limitation, extensible markup language—remote procedure call (XML-RPC). In an illustrative example, number of modules **312** may be written in a language such as Python using wxPython for the graphical components of number of mission planner clients **306**. Number of modules **312** may include, for example, without limitation, data and functions necessary to describe and create mission elements and graphical components needed to manipulate mission elements within the graphical user interface of number of mission planner clients **306** during creation of a mission. Number of users **314** is able to create mission elements using number of modules **312** and number of devices **310** of number of mission planner clients **306**.

Mission planner server **308** is a process executing on a computer, such as data processing system **200** in FIG. 2, for example. Mission planner server **308** listens for incoming XML-RPC communication from number of mission planner clients **306** and processes the incoming communication to query and modify a current mission, for example. Mission planner server **308** keeps the current mission in memory, such as memory **206** in FIG. 2, before and during execution of the current mission, which allows number of mission planner clients **306** to create and execute the current mission while adding new elements in real time.

Mission planner server **308** includes number of modules **316** and mission management framework **318**. In an illustrative example, number of modules **316** may be written in a language such as Python. Number of modules **316** may include, for example, without limitation, data and functions necessary to identify, manipulate, and store mission functions and parameters, as well as parse mission elements for information during execution of the mission.

Mission management framework **318** is a system that includes a library of mission elements and a library of assets, as well as a number of processes for task allocation. The library of mission elements includes a number of mission elements to be executed in a current mission. The number of mission elements is retrieved from mission element database **319** and stored into the library of mission elements by mission planner server **308** during mission creation, for example. Mission element database **319** includes a number of mission elements pre-defined by a user.

The library of assets includes a list of all assets, such as number of assets **324**, along with information about each asset. For example, the library of assets may include information about the availability of an asset, the readiness of an asset for use in a mission and/or task, the health of an asset, the resource use of an asset, the resource depletion by an asset, the current status of an asset, and/or any other suitable information associated with an asset.

Mission management framework **318** identifies the assets and tasks needed to execute a number of mission elements, and sends instructions to the number of assets identified to assign and control execution of a number of tasks and/or missions. When issues arise during execution of a mission, mission management framework **318** autonomously reconfigures the mission to achieve the mission objective using available assets, for example. In other words, the assets become an extension of mission planning system **302**, where mission management framework **318** is the brain and the assets are components of the body, for example. Mission management framework **318** sends out instructions for the assets to execute tasks and receives back messages from the assets about the status of the tasks and/or the status of the assets. These messages from the assets are used by mission management framework **318** to reconfigure instructions dynamically during a mission execution in a bottom up and top down planning structure.

Communications system **320** connects computer system **304** to number of assets **324**. Communications system **320** receives and transmits information **322** between mission management framework **318** and number of assets **324**. Information **322** may include, for example, without limitation, commands **326**, programs **328**, and messages **330**. Communications system **320** may be a wireless communication system or a wired communication system in the different advantageous embodiments.

In one advantageous embodiment, number of users **314** may initiate a mission planning task using number of mission planner clients **306** on computer system **304**. For example, number of users **314** may identify a specific task or mission for mission planning system **302** to execute. Number of users **314** may be local to number of assets **324** or may be very remote from number of assets **324**. For example, number of assets **324** may be in a different location, country, or planet than number of users **314**, such as a number of autonomous vehicles deployed on the moon and being controlled by mission management framework **318** from the earth. Mission planning system **302** may provide number of users **314** with the capability to build and monitor complex missions in real-time during execution of the missions by number of assets **324** regardless of the proximity, or lack thereof, of number of users **314** to number of assets **324**. Number of mobile assets **332**, number of sensors **334**, number of machines **336**, and number of charging stations **338** may be examples of a number of assets that may be included in number of assets **324**.

Number of mobile assets **332** may include, for example, without limitation, number of vehicles **340**. Number of vehicles **340** may be any type of vehicle including, without limitation, autonomous vehicles, semi-autonomous vehicles, unmanned vehicles, manned vehicles, and/or any other suitable vehicle. A vehicle may be an automobile, a land vehicle, a marine vessel, an aircraft, a spacecraft, a wall-climbing robot, and/or any other suitable type of vehicle, for example.

In an illustrative example, number of users **314** may use number of mission planner clients **306** to build a mission. Number of mission planner clients **306** communicates the mission dynamically as it is being built by number of users **314** to mission planner server **308**. Mission planner server

308 generates a high level mission script for mission management framework **318**. For example, the high level mission script may include high level commands. Mission management framework **318** converts these high level commands into low level commands, and generates a mission script for specific assets in number of assets **324**. For example, the mission script generated by mission management framework **318** may include commands to turn on and deploy one or more specific assets associated with a mission element. A mission script is a number of instructions. These instructions may include commands **326** and/or programs **328** for number of assets **324**, for example. Mission management framework **318** sends mission **342**, having commands **326** and/or programs **328**, to number of assets **324** using communication system **320**. Number of assets **324** execute mission **342** according to commands **326** and/or programs **328**, and communicate messages **330** back to mission management framework **318** during execution of the mission. Messages **330** may include, for example, without limitation, status of the mission, status of a number of tasks, and/or status of number of assets **324**. Mission management framework **318** may use the information received in messages **330** to modify mission **342**, sending modified mission **344** back to number of assets **324**.

In an illustrative example, messages **330** may include information about one or more of number of vehicles **340** exhausting current fuel resources before the completion of a task involved in mission **342**. Mission management framework **318** may reconfigure mission **342** to identify another vehicle that is fueled and capable of completing the incomplete task, and send modified mission **344** instructing the new vehicle to complete the incomplete task, in this illustrative example.

The illustration of mission planning environment **300** in FIG. 3 is not meant to imply physical or architectural limitations to the manner in which different advantageous embodiments may be implemented. Other components in addition and/or in place of the ones illustrated may be used. Some components may be unnecessary in some advantageous embodiments. Also, the blocks are presented to illustrate some functional components. One or more of these blocks may be combined and/or divided into different blocks when implemented in different advantageous embodiments.

For example, mission planning system **302** may be implemented with other computer systems in addition to computer system **304**. In another advantageous embodiment, computer system **304** may include additional mission planner clients implemented on additional data processing systems for use by number of users **314** in simultaneous mission planning and/or planning of multiple missions, for example.

With reference now to FIG. 4, an illustration of a mission planner client is depicted in accordance with an advantageous embodiment. Mission planner client **400** is an illustrative example of number of mission planner clients **306** in FIG. 3.

Mission planner client **400** includes number of devices **402**, display **404**, and number of modules **406**. Number of devices **402** is an illustrative example of one implementation of number of devices **310** in FIG. 3. Display **404** may be an example of one type of device in number of devices **402** used by number of users **314** in FIG. 3 to interact with mission planner client **400**.

Number of modules **406** include mission element design module **408**, element button module **410**, mission type select module **412**, mission variable define module **414**, popup element module **416**, and select window module **418**. Number of modules **406** is a number of software modules presented on a user interface as buttons, tabs, text boxes, pull-down menus, and the like, that correspond to a given software module.

Mission element design module **408** contains all of the data and functions necessary to describe and graphically depict a mission element. In an illustrative example, the mission element may be graphically depicted as a rectangle with triangles to indicate lines to connect the mission element with a previous mission element and/or a next mission element, for example, using a device, such as display **404**.

Element button module **410** contains program code necessary to graphically depict a button within a screen of the graphical user interface, as well as program code to create a new mission element when the button depicted is selected, or pressed. Element button module **410** spawns a missionType-Select window, linked to mission type select module **412**, to determine the start and stop parameters for the mission element as well as its label before the creation of the mission element.

Mission type select module **412** presents a dialog box to allow a user, such as number of users **314** in FIG. 3, to define the start and stop types associated with the start and stop parameters of element button module **410**, as well as values for the mission element. Mission type select module **412** is called after the user selects an elementButton, generated by element button module **410**, but before a missionElement is created by element button module **410**. In an illustrative example, options within the dialog box presented by mission type select module **412** may be grayed out to show the user what is available in the current state. For example, an element is not allowed to end on a sequence change when it does not begin on a sequence change. In another example, an element cannot begin at the end of a previous element if no elements are defined yet. Only values for currently selected types are allowed to be changed in the dialog box presented by mission type select module **412**.

Mission variable define module **414** presents a dialog box to allow the user to change some variables in a mission. The variables may be presented in two columns to conserve screen space, in one illustrative example. This dialog is presented immediately after a missionElement is defined and before a missionElement is created.

Popup element module **416** presents program code to the current element as static text. Popup element module **416** may be an optional selection by a user who wants to see the code that makes up a mission element. The user selects popup element module **416** to display the code of a mission element. The code is static because the user can view the code but cannot modify the code.

Select window module **418** presents the user with a selection of a number of different options having a number of different values. The values are the code for the functions of each option. Some options may allow for multiple selections while other options only allow for a single selection. These options may be defined when the window is created.

In an illustrative example, a user selects one of the Element buttons on the left side of the graphical user interface of FIG. 7, or in the graphical user interface of FIG. 6, right-clicks anywhere in the middle window, and selects "insert mission element". The user will then see mission component creator **804** illustrated in FIG. 8. The user selects one of the mission elements in mission element database **806** as illustrated in FIG. 8 and selects "OK", resulting in a view of component editor **904** illustrated in FIG. 9. The user fills out the mission element parameters, then selects the "Time" tab depicted in component editor **904** of FIG. 9 and fills out the Start and Stop Conditions, then selects "OK." This process is repeated for every mission element and every function that the user wants to add to the mission. At the end the user clicks the "save"

button, depicted as a floppy disk at the top of the graphical user interface of FIG. 8 and FIG. 9.

The illustration of mission planner client 400 in FIG. 4 is not meant to imply physical or architectural limitations to the manner in which different advantageous embodiments may be implemented. Other components in addition and/or in place of the ones illustrated may be used. Some components may be unnecessary in some advantageous embodiments. Also, the blocks are presented to illustrate some functional components. One or more of these blocks may be combined and/or divided into different blocks when implemented in different advantageous embodiments. For example, other modules in addition to number of modules 406 may be included in mission planner client 400.

With reference now to FIG. 5, an illustration of a mission planner server is depicted in accordance with an advantageous embodiment. Mission planner server 500 is an illustrative example of mission planner server 308 in FIG. 3.

Mission planner server 500 includes number of modules 502 and mission management framework 504. Number of modules 502 is an illustrative example of one implementation of number of modules 316 in FIG. 3. Number of modules 502 includes mission function module 506, mission element module 508, read library module 510, write mission module 512, and main module 514.

Mission function module 506 contains data necessary to identify unique mission functions. Mission function module 506 includes data such as, without limitation, the name, description, code, parameters, number of assets required, and estimated time to execute for each mission function. The code may be written in Python, for example. The parameters may be any variables in the mission that are capable of being changed by a user, such as number of users 314 in FIG. 3, for example. In an illustrative example, a parameter may be area coordinates or a number of iterations. A user may change area coordinates for a mission function, for example. The number of assets required and time to execute refers to the number of assets required for and the time to execute the mission elements.

Mission element module 508 contains information necessary for a mission element registered in the mission. Mission element module 508 includes information such as, without limitation, the function name as defined by its original file, the unique label as defined by the user, the code, any parameters that must be defined by a user, and the start and stop types as well as their values for the mission element. In an illustrative example, getCode() may be a function to return the Python code from the mission element, which replaces all instances of parameters with their defined value.

Read library module 510 contains functions to read mission functions from the file system as well as parse the mission functions for information. For example, vehTypeParams may be a data structure to hold parameters for the type of vehicle assets required in the mission. This data structure may contain the type, number, wait flag and release flag values, for example. In another illustrative example, readLibrary(dir) is a function that reads all files in a directory (dir) and returns the contents of the files as a dictionary with the key set as the file name without the extension, removing “.py” for example in Python code, and the contents of the file as its value. This function may assume that all files with “~” in their name are temporary files and should not be read, in this illustrative example.

In yet another illustrative example, parseFunc(code) is a function that takes the code for a mission element and parses it for several parameters. This function may assume that the first string surrounded by three quotation marks (“”) is the

description of the element. The function checks the Requires decorator to gather information about assets required for the mission element, for example. The function may look for the string “#Time=” and assume that the string following this but before the new line is the time estimated for this mission element to execute, for example. The function may also find user defined variables, denoted by a commented line starting with “#” followed by a variable surrounded by “\$,” for example. If “=” immediately follows the variable, without whitespace, it is stored as that variable’s default value. If a string follows the variable or default value, with whitespace in between, then that string is assumed to be the description of that variable, in this illustrative example.

Write mission module 512 writes the mission to a python file readable by mission management framework 504. Write mission module 512 may use the following set of functions: writeMission (dir, name, startFunc, stopFunc, oniterations, supportFuncs, missionElements). This set of functions takes in several parameters in order to write the mission file. For example, dir is the directory to place the file and name is the name of the mission. The name of the mission will be concatenated with “.py” in this example. startFunc is the function that should follow the decorator OnStart to be compliant with the mission manager framework. stopFunc is the function that should follow the decorator OnStop. oniterations is the list of functions that require the decorator Oniteration. supportFuncs is a list of functions that must be printed at the beginning of the mission for use in later elements. missionElements is a list of missionElement objects to be written by write mission module 512. missionElements is the function that handles all the decorator additions necessary for the mission, for example.

Main module 514 runs the extensible markup language remote procedure call (XML-RPC) server and stores all of the mission functions. Data on the XML-RPC server is broken into possible functions and active functions. Possible functions are all of the available functions in the library, as read by read library module 510. Active functions are all of the functions that have been defined.

Possible functions are stored as dictionaries with the name of the function as the key and a missionFunction object as the value. All components are read for their respective directories, defined at the beginning of the mission script written by write mission module 512, at the beginning of the mission. Each possible component dictionary is stored in the possible-Components dictionary using its component name as the key and the dictionary itself as the value. This makes retrieval easier in later functions.

Active functions are defined in several ways, depending on the component. Start and stop functions are defined as the name of the function given by the user. Iteration and support functions are defined as lists since more than one can be defined. In each case, the value is the name of the function. Mission elements are defined as a dictionary using the label of the element as the key and a missionElement object as the value.

Main module 514 also stores, on the XML-RPC server, variables to determine if the mission is started, the current sequence number, and the current mission time. The current mission time may be stored in seconds, in one illustrative example.

Mission management framework 504 includes mission elements library 516, asset library 518, resource identification process 520, task identification process 522, and mission assignment process 524. Mission elements library 516 includes number of mission elements 526. Number of mission elements 526 is stored mission elements built by number

of modules **502** to be executed in a current mission. Number of mission elements **526** may be retrieved from mission element database **534** by number of modules **502** during mission creation, for example. Mission element database **534** is an illustrative example of one implementation of mission element database **319** in FIG. 3.

Asset library **518** includes number of assets **528**. Number of assets **528** is a list of all assets, such as number of assets **324** in FIG. 3, along with a current status of each asset. For example, number of assets **528** may include information about the availability of an asset, the readiness of an asset for use in a mission and/or task, the health of an asset, the resource use of an asset, the resource depletion by an asset, the current status of an asset, and/or any other suitable information associated with an asset.

Task identification process **522** receives a mission script from write mission module **512** and uses mission elements library **516** to identify the mission elements, or tasks, needed for the mission. Resource identification process **520** receives a mission script from write mission module **512** and uses mission elements library **516** to identify a number of assets from number of assets **528** in asset library **518** that can accomplish the mission elements selected for the mission. Mission assignment process **524** receives the mission elements and assets identified by resource identification process **520** and task identification process **522**, and assign the tasks identified to specific assets identified, generating instructions **530**. Instructions **530** are then transmitted by mission management framework **504** to number of assets **532** for mission execution.

The illustration of mission planner server **500** in FIG. 5 is not meant to imply physical or architectural limitations to the manner in which different advantageous embodiments may be implemented. Other components in addition and/or in place of the ones illustrated may be used. Some components may be unnecessary in some advantageous embodiments. Also, the blocks are presented to illustrate some functional components. One or more of these blocks may be combined and/or divided into different blocks when implemented in different advantageous embodiments.

With reference now to FIG. 6, an illustration of a graphical user interface is depicted in accordance with an advantageous embodiment. Graphical user interface **600** is an illustrative example of one implementation of mission planner client **306** in FIG. 3 using number of devices **312** in FIG. 3.

Graphical user interface **600** includes execution control buttons **602** and mission elements **604**. Execution control buttons **602** may be selected by a user, such as number of users **314** in FIG. 3, to start a mission, stop a mission, advance a mission sequence, and any other number of control features for a mission. Mission elements **604** are an illustrative example of mission elements selected from number of mission elements **526** in FIG. 5 for inclusion into a mission, for example. One or more start functions **606** are selected from a library of available start functions. A start function is a function that runs at the start of the mission, for example as an initialization function for the mission. As an illustrative example, graphical user interface **600** depicts start function **606** called defaultStart that has been added by the user to this mission. One or more stop functions **608** are selected from a library of available stop functions. A stop function is a function that runs upon completion of the mission. A stop function may be, for example, without limitation, to clear all tasks and reset the number of assets. As an illustrative example, graphical user interface **600** depicts stop function **608** called stopMission that has been added by the user to this mission.

One or more stop conditions **610** are selected from a library of available stop conditions. A stop condition is a function that defines a stop condition of the mission. A stop condition may, for example, without limitation, define a time value at which the mission stops regardless of whether the individual mission elements completed execution or not. As an illustrative example, graphical user interface **600** depicts stop condition **610** called seqAdvanced that has been added by the user to this mission. One or more iteration functions **612** are selected from a library of available iteration functions. An iteration function is a function that runs on every iteration of the mission management framework. For example, an iteration function may run in parallel with the mission elements and display a report about available and deployed assets. As an illustrative example, graphical user interface **600** depicts iteration function **612** called defaultIteration that has been added by the user to this mission.

One or more support functions **614** are selected from a library of available support functions. A support function is a function that is called by one or more mission elements. For example, a support function may be an algorithm to partition a search area that can be used by different mission elements that perform search related tasks. As an illustrative example, graphical user interface **600** depicts support functions **614** called divideSearchArea and greedySearch that have been added by the user to this mission. Mission elements **604** are represented by bars the length of which is proportional to the mission element duration as measured by time scale **616**, similar to a Gantt chart.

The illustration of graphical user interface **600** in FIG. 6 is not meant to imply physical or architectural limitations to the manner in which different advantageous embodiments may be implemented. Other components in addition and/or in place of the ones illustrated may be used. Some components may be unnecessary in some advantageous embodiments. Also, the blocks are presented to illustrate some functional components. One or more of these blocks may be combined and/or divided into different blocks when implemented in different advantageous embodiments.

For example, although the different functions are depicted as being selected by a user using graphical user interface **600**, other advantageous embodiments may include an automated selection process that specifies the required support functions within each mission element.

With reference now to FIG. 7, an illustration of a graphical user interface is depicted in accordance with an advantageous embodiment. Graphical user interface **700** is an illustrative example of one implementation of mission planner client **306** in FIG. 3 using number of devices **310** in FIG. 3.

Graphical user interface **700** includes mission elements database **702** and library of mission elements **704**. Mission elements database **702** is an illustrative example of one implementation of mission elements database **319** in FIG. 3. Library of mission elements **704** is an illustrative example of one implementation of mission elements library **516** in FIG. 5.

In this illustrative example, mission elements database **702** includes a number of mission elements, such as inspectTarget **706**, observeStructure **708**, mixedCoverage **710**, monitorAdvance **712**, initialSurvey **714**, clearGround **716**, and jointSearch **718**. Library of mission elements **704** is an illustrative example of mission elements that a user selected from mission elements database **702** and added to the mission using graphical user interface **700**. In this illustrative example, the user added five mission elements of initialSurvey **714**, inspectTarget **706**, jointSearch **718**, monitorAdvance **712**, mixedCoverage **710**. Library of mission elements **704** are

15

represented by bars in this illustrative example, the length of which is proportional to the mission element duration as measured by time scale **720** and/or sequence number **722**. This proportional measurement may be similar to a Gantt chart, for example. A user, such as number of users **314** in FIG. 3, may enter values in sequence times estimates **724** to determine the estimated times at which the mission sequence is advanced in order to represent those mission elements that begin or end on sequence change on a time scale, for example. The user then selects update **726** to apply the values entered into sequence times estimates **724** to the mission elements display. In this illustrative example, the mission sequence starts at zero and changes to one at sixty seconds.

The illustration of graphical user interface **700** in FIG. 7 is not meant to imply physical or architectural limitations to the manner in which different advantageous embodiments may be implemented. Other components in addition and/or in place of the ones illustrated may be used. Some components may be unnecessary in some advantageous embodiments. Also, the blocks are presented to illustrate some functional components. One or more of these blocks may be combined and/or divided into different blocks when implemented in different advantageous embodiments.

With reference now to FIG. 8, an illustration of a graphical user interface is depicted in accordance with an advantageous embodiment. Graphical user interface **800** is an illustrative example of one implementation of mission planner client **306** in FIG. 3 using number of devices **312** in FIG. 3.

Graphical user interface **800** includes canvas **802** and mission component creator **804**. Canvas **802** may be an illustrative example of one implementation of display **404** of mission planner client **400** in FIG. 4. Canvas **802** is a graphical situational display of the mission environment where a user can drag a cursor using a device, such as a mouse, to select coordinates parameters of mission elements.

Mission component creator **804** is a dialog box that presents a user, such as number of users **314** in FIG. 3, with mission element database **806** and associated code of selected mission element **808**. In an illustrative example, if a user selects a mission element from mission element database **806**, the code for that mission element will be displayed in the dialog box to the right of the listing of mission elements. Mission component creator **804** is an example of select window module **418**. In this example, the different options in select window module **418** are the mission elements in mission element database **806**, and the different values of select window module **418** are code of selected mission element **808** for each mission element. Code of selected mission element **808** is displayed by popup element module **416**.

The illustration of graphical user interface **800** in FIG. 8 is not meant to imply physical or architectural limitations to the manner in which different advantageous embodiments may be implemented. Other components in addition and/or in place of the ones illustrated may be used. Some components may be unnecessary in some advantageous embodiments. Also, the blocks are presented to illustrate some functional components. One or more of these blocks may be combined and/or divided into different blocks when implemented in different advantageous embodiments.

With reference now to FIG. 9, an illustration of a graphical user interface is depicted in accordance with an advantageous embodiment. Graphical user interface **900** is an illustrative example of one implementation of mission planner client **306** in FIG. 3 using number of devices **312** in FIG. 3.

Graphical user interface **900** includes mission planner **902** and component editor **904**. Mission planner **902** is an illustrative example of one implementation of mission planner

16

client **306** in FIG. 3, presenting graphical depictions of functions for a user to manipulate. Component editor **904** may be an illustrative example of a dialog box presented by mission variable define module **414** in FIG. 4, for example, allowing a user to change variables in a mission. A user can insert multiple instances of the same mission element, for example running at different times or locations, and get unique names. In this example, the user entered initialSurvey1 as Unique Name of this instance of initialSurvey mission element.

The illustration of graphical user interface **900** in FIG. 9 is not meant to imply physical or architectural limitations to the manner in which different advantageous embodiments may be implemented. Other components in addition and/or in place of the ones illustrated may be used. Some components may be unnecessary in some advantageous embodiments. Also, the blocks are presented to illustrate some functional components. One or more of these blocks may be combined and/or divided into different blocks when implemented in different advantageous embodiments.

With reference now to FIG. 10, an illustration of a flow-chart illustrating a process for mission planning is depicted in accordance with an advantageous embodiment. The process in FIG. 10 may be implemented by a component such as mission planning system **302** in FIG. 3, for example.

The process begins by receiving a user definition of a mission (operation **1002**). The user definition may be received using a graphical user interface, such as mission planner client **306** in FIG. 3, for example. The user definition may generally define a mission, or number of tasks, that needs to be accomplished.

The process generates a mission script using the user definition and a number of mission elements (operation **1004**). The process may generate a mission script using a mission management framework, such as mission management framework **318** in FIG. 3, for example. The number of mission elements may define aspects of a mission, or specific tasks in a number of tasks, for example.

The process assigns the number of mission elements to a number of assets (operation **1006**). The assets may be, for example, number of assets **324** in FIG. 3. The process controls execution of the number of mission elements by the number of assets (operation **1008**). The process may generate instructions for the number of assets to execute the mission using the number of mission elements. The instructions may be transmitted to the number of assets using a communication system, such as communication system **320** in FIG. 3, for example. The execution control actions may include optional advancement of a mission sequence by the process to skip a mission element, for example, given feedback or messages received from the number of assets. Optionally, the sequence advancement of a mission may be controlled by a user, such as number of users **314** in FIG. 3, whereby the user gives this command to the mission management framework and not directly to the number of assets.

The process monitors the number of assets executing the mission (operation **1010**). The process receives messages from the number of assets during execution of the mission (operation **1012**). The process determines whether a mission reconfiguration is needed (operation **1014**). A mission reconfiguration may be needed if an asset is unable to complete a mission element, or needs assistance completing a mission element, for example.

If a determination is made that a mission reconfiguration is needed, the process generates a modified mission using the messages received (operation **1016**), and returns to operation **1010**. This reconfiguration is performed autonomously by the mission management framework based on the messages

received, such as vehicle failures or other changes in asset status, for example. Optionally, a user may also modify the mission by adding a number of mission elements to the mission, removing a number of mission elements that have not yet started from the mission, modifying the parameters of a number of mission elements that have not yet started, and/or any other suitable modification of the mission.

If a determination is made that a mission reconfiguration is not needed, the process then determines whether the mission is complete (operation 1018). If a determination is made that the mission is not complete, the process returns to operation 1010. If a determination is made that the mission is complete, the process terminates thereafter.

With reference now to FIG. 11, a flowchart illustrating a process for defining a mission is depicted in accordance with an advantageous embodiment. The process in FIG. 11 may be implemented by a component such as mission planning system 302 in FIG. 3, for example.

The process begins by adding a number of mission elements to a library of mission elements (operation 1102). The number of mission elements may be selected from a mission elements database, such as mission elements database 319 in FIG. 3, by a mission planner server, and saved into a mission elements library, such as mission elements library 516 in FIG. 5, for example.

The process adds a number of start functions to the mission (operation 1104). The start functions may be added from a library of start functions, such as start functions 606 in FIG. 6. The process then adds a number of stop functions to the mission (operation 1106). The stop functions may be added from a library of stop functions, such as stop functions 608 in FIG. 6. The process optionally adds a number of stop conditions to the mission (operation 1108). The stop conditions may be added from a library of stop conditions, such as stop conditions 610 in FIG. 6. The process adds a number of iteration functions to the mission (operation 1110). The iteration functions may be added from a library of iteration functions, such as iteration functions 612 in FIG. 6. The process optionally adds a number of support functions to the mission (operation 1112). The support functions may be added from a library of support functions, such as support functions 614 in FIG. 6. The process optionally save the mission in a storage device (operation 1114), with the process terminating thereafter. The process may execute the mission from the computer memory without saving it, for example.

The flowcharts and block diagrams in the different depicted embodiments illustrate the architecture, functionality, and operation of some possible implementations of apparatus, methods and computer program products. In this regard, each block in the flowchart or block diagrams may represent a module, segment, or portion of computer usable or readable program code, which comprises one or more executable instructions for implementing the specified function or functions. In some alternative implementations, the function or functions noted in the block may occur out of the order noted in the figures. For example, in some cases, two blocks shown in succession may be executed substantially concurrently, or the blocks may sometimes be executed in the reverse order, depending upon the functionality involved.

The different advantageous embodiments can take the form of an entirely hardware embodiment, an entirely software embodiment, or an embodiment containing both hardware and software elements. Some embodiments are implemented in software, which includes but is not limited to forms, such as, for example, firmware, resident software, and microcode.

Furthermore, the different embodiments can take the form of a computer program product accessible from a computer usable or computer readable medium providing program code for use by or in connection with a computer or any device or system that executes instructions. For the purposes of this disclosure, a computer usable or computer readable medium can generally be any tangible apparatus that can contain, store, communicate, propagate, or transport the program for use by or in connection with the instruction execution system, apparatus, or device.

The computer usable or computer readable medium can be, for example, without limitation an electronic, magnetic, optical, electromagnetic, infrared, or semiconductor system, or a propagation medium. Non limiting examples of a computer readable medium include a semiconductor or solid state memory, magnetic tape, a removable computer diskette, a random access memory (RAM), a read-only memory (ROM), a rigid magnetic disk, and an optical disk. Optical disks may include compact disk—read only memory (CD-ROM), compact disk—read/write (CD-R/W) and DVD.

Further, a computer usable or computer readable medium may contain or store a computer readable or usable program code such that when the computer readable or usable program code is executed on a computer, the execution of this computer readable or usable program code causes the computer to transmit another computer readable or usable program code over a communications link. This communications link may use a medium that is, for example without limitation, physical or wireless.

A data processing system suitable for storing and/or executing computer readable or computer usable program code will include one or more processors coupled directly or indirectly to memory elements through a communications fabric, such as a system bus. The memory elements may include local memory employed during actual execution of the program code, bulk storage, and cache memories which provide temporary storage of at least some computer readable or computer usable program code to reduce the number of times code may be retrieved from bulk storage during execution of the code.

Input/output or I/O devices can be coupled to the system either directly or through intervening I/O controllers. These devices may include, for example, without limitation to keyboards, touch screen displays, and pointing devices. Different communications adapters may also be coupled to the system to enable the data processing system to become coupled to other data processing systems or remote printers or storage devices through intervening private or public networks. Non-limiting examples are modems and network adapters are just a few of the currently available types of communications adapters.

The different advantageous embodiments recognize and take into account that current mission planning systems involve scripting missions offline then running the missions after they are completed offline. Many of these current systems are specific to a single mission type, such as an area search mission for example. The existing solutions are not practical for dynamic applications where missions need to be created and modified on the fly. These current systems are rigid and do not provide for modifying a mission once execution starts. The systems currently available require a user to be able to write code and script the mission manually as well.

Thus, the different advantageous embodiments provide a system for real-time definition, execution, and monitoring of complex missions involving a multitude of assets. This system allows operators of autonomous vehicles to easily create, update, and execute complex missions involving multiple

tasks that need to be executed by varying numbers and types of assets, using a graphical user interface. By having the client and server communicate over a network, the user can define, update, and execute missions from a remote location. Also multiple clients can be used to allow multiple users to simultaneously monitor and update missions. Mission definition is modular using the concept of “mission elements”, and thus a user can monitor mission progress by graphically displaying the mission elements in a real-time Gantt chart format that shows the dependencies between mission elements, their completion status, and the resources assigned or required to each mission element. This is achieved using feedback from the mission management framework via the mission planner server. In addition, XML-RPC may be used for rich messaging between clients and server including querying the server library of mission elements, thus allowing easy updates of the library without any software change in the clients.

The description of the different advantageous embodiments has been presented for purposes of illustration and description, and is not intended to be exhaustive or limited to the embodiments in the form disclosed. Many modifications and variations will be apparent to those of ordinary skill in the art. Further, different advantageous embodiments may provide different advantages as compared to other advantageous embodiments. The embodiment or embodiments selected are chosen and described in order to best explain the principles of the embodiments, the practical application, and to enable others of ordinary skill in the art to understand the disclosure for various embodiments with various modifications as are suited to the particular use contemplated.

What is claimed is:

1. A system for dynamically modifying a mission plan comprising:

a number of computers;

a graphical user interface, wherein the graphical user interface is executed by a first computer in the number of computers;

first program code stored on the first computer in the number of computers, wherein the first computer runs the first program code to define the mission plan using a number of mission elements from a mission elements database;

a graphical display on the graphical user interface that graphically depicts the number of mission elements from the mission elements database, the graphical display including at least the mission elements of starting execution of the mission plan, inspecting a target, observing a structure, and monitoring an advance, the graphical display receiving user input for one or more of the number of mission elements that modifies the mission plan;

second program code stored on at least a second computer in the number of computers wherein the first computer and the second computer communicate over a network, and wherein the second program code generates instructions for a number of assets to execute the mission plan in real time and monitor the number of assets during execution of the mission plan, wherein the instructions for the number of assets are assigned to the number of assets based on information about at least one of availability of the number of assets, readiness of the number of assets for use in executing the mission plan, health of the number of assets, resource use of the number of assets, resource depletions by the number of assets, or current status of the number of assets;

a communications system that transmits messages from the number of assets to the number of computers and transmits the instructions from the number of computers to the number of assets;

wherein the first computer is physically located in a remote location from the second computer, and wherein the instructions for the mission plan are generated on the second computer in real time during execution of the mission plan when the graphical display on the graphical user interface executed by the first computer receives the user input that modifies the mission plan; and

a selection of the number of mission elements made by a number of users performing at least one of defining, modifying, executing, and monitoring execution of the mission plan in the second computer, and wherein a plurality of computers from the number of computers run multiple instances of the first program code, wherein the second computer is not one of the plurality of computers, and wherein the second computer communicates with the plurality of computers allowing multiple users to perform defining, modifying, executing, and monitoring execution of the mission plan simultaneously.

2. The system of claim 1, wherein the number of assets include at least one of a vehicle, sensor, charging station, and machine, the number of assets configured to communicate with the first computer.

3. The system of claim 1, wherein the number of mission elements is stored in a mission element library.

4. The system of claim 1, wherein the number of mission elements is generated by the first program code.

5. The system of claim 1, wherein the first program code communicates with the second program code over a network.

6. The system of claim 1, wherein the first program code communicates with the second program code using extensible markup language remote procedure call.

7. The system of claim 1, wherein the graphical user interface displays the mission plan in a Gantt chart format for a user to define and monitor execution of the mission plan.

8. The system of claim 1, wherein each mission element includes a number of mission tasks, and wherein the system defines, updates, executes and monitors multiple executions of mission plans simultaneously.

9. The system of claim 1, wherein the graphical user interface further comprises at least one of a start function, a stop function, a stop condition, and a support function.

10. The system of claim 1, wherein the graphical user interface further comprises the mission elements database.

11. The system of claim 1, wherein the graphical user interface further comprises a mission planner and a component editor.

12. The system of claim 1, wherein the graphical display further includes at least the mission elements of providing mixed coverage, performing an initial survey, clearing ground, and performing a joint search.

13. A method for mission planning, the method comprising:

running first program code defining a mission plan using a number of mission elements from a mission elements database by a first computer in a number of computers; displaying a graphical display on a graphical user interface that graphically depicts the number of mission elements for the mission plan from the mission elements database, the graphical display including at least the mission elements of starting execution of the mission plan, inspecting a target, observing a structure, and monitoring an advance;

21

receiving, by the first computer, user input from the graphical display for one or more of the number of mission elements that modifies the mission plan;
 generating instructions for the mission plan, by a second computer, wherein the first computer and the second computer communicate over a network, based on the number of mission elements when the first computer receives the user input from the graphical display that modifies the mission plan, wherein the instructions are assigned to a number of assets based on information about at least one of availability of the number of assets, readiness of the number of assets for use in executing the mission plan, health of the number of assets, resource use of the number of assets, resource depletions by the number of assets, or current status of the number of assets;
 assigning the number of mission elements to the number of assets;
 controlling execution of the number of mission elements by the number of assets;
 receiving messages by a mission planner from the number of assets during execution of the mission plan, the mission planner remote from the number of assets;
 monitoring the number of assets executing the mission plan;
 determining whether a reconfiguration of the mission plan is needed; and
 a selection of the number of mission elements made by a number of users performing at least one of defining, modifying, executing, and monitoring execution of the mission plan in the second computer, and wherein a plurality of computers from the number of computers run multiple instances of the first program code, wherein the second computer is not one of the plurality of computers, and wherein the second computer communicates with the plurality of computers allowing multiple users to perform defining, modifying, executing, and monitoring execution of the mission plan simultaneously.

14. The method of claim 13, further comprising:
 responsive to a determination that reconfiguration of the mission plan is not needed, determining whether execution of the mission plan is complete.

15. The method of claim 13, wherein the graphical display on the graphical user interface that graphically depicts the number of mission elements is a mission planner client.

16. The method of claim 13, wherein a mission script is generated by a mission management framework using the number of mission elements.

17. The method of claim 13, wherein the number of mission elements is generated by a mission planner server and selected by a mission management framework for assignment to the number of assets.

18. The method of claim 13, wherein a user using the graphical user interface and the number of assets inputs coordinate parameters to the number of mission elements so as to modify the number of mission elements.

19. The method of claim 13, wherein the receiving, generating, assigning, controlling, and monitoring steps are performed in real-time.

20. A computer program product for managing information for flights, the computer program product comprising:
 a non-transitory computer recordable storage medium;
 first program code, stored on the computer recordable storage medium, for defining a mission plan using a number of mission elements from a mission elements database by a first computer in a number of computers;

22

second program code, stored on the computer recordable storage medium, for displaying a graphical display on a graphical user interface that graphically depicts the number of mission elements for the mission plan from the mission elements database, the graphical display including at least the mission elements of starting execution of the mission plan, inspecting a target, observing a structure, and monitoring an advance;

third program code, stored on the computer recordable storage medium, for receiving user input from the graphical display for one or more of the number of mission elements that modifies the mission plan;

fourth program code, stored on the computer recordable storage medium, for generating a mission script using the number of mission elements;

fifth program code, stored on the computer recordable storage medium, for assigning the number of mission elements to a number of assets, wherein the assigning of the number of mission elements to the number of assets is based on information about at least one of availability of the number of assets, readiness of the number of assets for use in executing the mission plan, health of the number of assets, resource use of the number of assets, resource depletions by the number of assets, or current status of the number of assets;

sixth program code, stored on the computer recordable storage medium, for generating instructions for the number of assets to execute the mission plan using the number of mission elements by a second computer, wherein the first computer and the second computer communicate over a network;

seventh program code, stored on the computer recordable storage medium, for receiving messages by a mission planner from the number of assets during execution of the mission plan, the mission planner remote from the number of assets, the mission planner positioned remote from the number of assets;

eighth program code, stored on the computer recordable storage medium, for monitoring the number of assets executing the mission;

ninth program code, stored on the computer recordable storage medium, for determining whether a reconfiguration of the mission plan is needed;

tenth program code, stored on the computer recordable storage medium, responsive to a determination that the reconfiguration of the mission plan is needed, for generating, in the mission planner, modifications to the mission plan in real time based on the messages received by the mission planner from the number of assets; and
 a selection of the number of mission elements made by a number of users performing at least one of defining, modifying, executing, and monitoring execution of the mission plan in the second computer, and wherein a plurality of computers from the number of computers run multiple instances of the first program code, wherein the second computer is not one of the plurality of computers, and wherein the second computer communicates with the plurality of computers allowing multiple users to perform defining, modifying, executing, and monitoring execution of the mission plan simultaneously.

21. The computer program product of claim 20 further comprising:
 program code, stored on the computer recordable storage medium, responsive to a determination that reconfiguration of the mission plan is not needed, for determining whether execution of the mission plan is complete.

22. The computer program product of claim 20, wherein the graphical display on the graphical user interface that graphically depicts the number of mission elements is a mission planner client.

23. The computer program product of claim 20, wherein the mission script is generated by a mission management framework. 5

24. The computer program product of claim 20, wherein the number of mission elements is generated by a mission planner server and selected by a mission management framework for assignment to the number of assets. 10

* * * * *