



08 Oct 1915

The Missouri Miner, October 08, 1915

Follow this and additional works at: https://scholarsmine.mst.edu/missouri_miner

These newspapers reflect the attitudes, perspectives, and beliefs of different times. Neither the library nor the university endorses the views expressed in these collections, some of which contain images and language which may be offensive to some readers.

Recommended Citation

"The Missouri Miner, October 08, 1915" (1915). *The Missouri Miner Newspaper*. 34.
https://scholarsmine.mst.edu/missouri_miner/34

This Newspaper is brought to you for free and open access by Scholars' Mine. It has been accepted for inclusion in The Missouri Miner Newspaper by an authorized administrator of Scholars' Mine. This work is protected by U. S. Copyright Law. Unauthorized use including reproduction for redistribution requires the permission of the copyright holder. For more information, please contact scholarsmine@mst.edu.

M. S. M. Library

THE MISSOURI MINER.

Missouri School of Mines and Metallurgy, Rolla, Mo.

Vol. 2, No. 5.

Friday, October 8, 1915.

Price 5 Cents.

Miners 41, Pittsburg Normals 0.

Well, they've still got the habit. They demonstrated the fact by piling up forty-one points on the team from the Kansas Normal, of Pittsburg, Kansas, while the last mentioned outfit failed to even make a bid for a score. To the older rooters it was refreshing to see Imlay and McCartney tear through the holes and skirt the ends in 1914 fashion. Miller, Brandy, Askew and Wilson also showed the "old pep" in the line, and opened up holes in the Normal line big enough for a wagon to go thru. Kiskaddon at quarter kept the bunch on their toes, and made some brilliant returns of the punts.

A post mortem account would read something like this:

Normals kick off to Miners. "Kelly" takes the ball and makes a 25-yard return. On the next play Imlay goes around left end for a 20-yard gain. Ball on Normal's 15-yard line. A few bucks and Imlay carries it over after six minutes of play. Kiskaddon kicked the goal. Score, Miners 7, Normals 0.

Miners kick to Normals, who fail at the line-plunging game; Miners' ball on downs. At this point the Normals' line went to pieces, and Jack and McCartney romped thru 'em for the second counter. Kiskaddon registered. Score, Miners 14, Normals 0.

Everybody settled down and began to count, while Jimmie Allen, Bill Kahlbaum and Pat Murphy urged the populace on to further efforts by acting as cheer leaders.

The Miners take the next kick-off, and by rushing the Normal ends they make long gains. Imlay scores the touchdown on a nice bit of running thru a broken

field. Kiskaddon kicks goal. Score, Miners 21, Normals 0.

After receiving the next kick-off, the Normals tried in vain to make a first down, but failed. Miners take the ball, and lose it again on an intercepted forward pass. Normals try a forward pass, which Kiskaddon intercepts when time is called for the first quarter. Score, Miners 21, Normals 0.

"Kadner" runs 20 yards, behind good interference, before being downed. Imlay held for no gain on the next play by the Normal end, who also gave a good exhibition of tackling during entire game. Imlay zigzags to another score. Goal missed. Score, Miners 27, Normals 0.

Normals fumble next kickoff. Miners lose and regain ball again when Normals fumble. Kis and Imlay officiated in the next scoring. Kiskaddon kicks the goal. Score, Miners 35, Normals 0.

Kansans receive ball, only to lose it on downs. Miners bungle up a play, and lose about 30 yards, but still retain ball. Imlay makes a long run, but drops the ball, and a careless Normalite falls on it. Normals prepare for a place kick, which falls short. Kis kicks out of danger, when time is called for the first half. Score, Miners 34, Normals 0.

Between halves the Freshmen snake-danced around the field, and gave several yells, Ehlers, Peterson, Ashdown and Turnbull exhibited in front of the bleachers under the auspices of the Q. V. Massey, also, helped while away the long minutes between halves by submitting to a "wrinkling."

Normals take the kickoff, and

Attention, Alumni.

We cannot impress upon you with too much emphasis the importance of an Alumni Association. You all know that a school's reputation depends mostly upon its graduates, upon the product which it gives to the world and upon the finish and quality that same product possesses. Many of you left the M. S. M. not as a finished product by any means for to produce a finish product is the effort of a lifetime and not of a four year course of study; but you did leave with a polish which you could never have attained had you not spent four years at M. S. M. You same men have become the leading and authoritative men of many great mining and other great enterprises and can now aid the school by forming an Alumni Association to take an active interest in and to further a greater M. S. M. which will impress upon the country the quality of the product produced at Rolla by the greatest mining school of the world.

As stated in the last issue of the Miner you will find a ballot for election of the Alumni Association officers on the last page of this issue. We are also publishing the same article which was written last week to the Alumni immediately following for the benefit of those who may in some way or other not have received the previous issue. This is the last time the ballot will be printed. You have until Oct. 25, to send in your vote.

Nominations have been made for officers of the proposed Missouri School of Mines Alumni Association. The result of the

Continued on Third Page.

Continued on Sixth Page.

Deposit Boxes FREE.

Deposit your money in the
**NATIONAL BANK
OF ROLLA,**

The oldest and largest bank in
Phelps or adjoining counties.

We solicit the accounts of
the Students.

**Safety Boxes Free
to Our Customers.**

The Miners came out of the game with the Kansans in good physical condition. Most of the regulars only played about half of the game, and the scrubs finished the contest. Coach Dennie was content to run up a respectable score with his heavy artillery, and then let the light artillery hold off the enemy for the remainder of the conflict.

Several new players will be tried out against Illinois and nobody ought to be surprised if Dennie's proteges hang up a few scores on their own account.

One thing is certain, the Illinois team will have to play their trump cards Saturday or else there will be a bunch of hard losers in Urbana, on Saturday night.

Massey, a good line man of last year's team put on a suit and was out with the bunch last Monday. McNeely, an old Shurtleff man, also was counted among the recruits. These two men have had previous football training and ought to make a good showing. The coach is making strenuous efforts to develop a good line, and in that case, the backfield will be able to take care of itself. Stiff practice scrimmages will be the main features until the bunch leaves for their Illinois invasion. Come out and help the boys along, in a suit if possible.

Talks by a Freshie's Roommate.

THE GRIND VS. THE STUDENT.

What seats did you get? Why, you poor fish, I left my Lyceum ticket on your desk, and we'd agreed to get seats together. What! you're not going? "Gotta study from now on," you say? Well! I'm a son of a gun!

Listen, old roommate, that's a pretty good resolution—darn good. But see here; there's two ways of studying. One way is the right way; the other altogether uphill and foolish. The first way is to sincerely kick the stuffin' outta your studies about, say, two hours every night, instead of letting everything pile up until the night before the exams, when you crab around like a martyr of a lost cause. When you've got work assigned for next Monday, and to-day's Thursday, don't postpone your acquaintance with the text until Sunday night. For even if you're a Freshman, you might get a chance to fuss. No, do it right away. And when you don't get a thing in a lecture, don't trust to the Lord for an inspiration; ask questions. You won't humiliate the Prof. He's had rarer specimens than you to deal with. In other words, study when you have to, and as soon as you can. Be square with it all. Don't just skim over. Dig! DIG!

Then, there's the other view. For the love of Pete, don't be a grind. If there's anything less ornamental or useful around the place, point it out. Some fellows sneak into the Labs right after school, toddle down to a hasty supper, and immediately bury their noses in their books as soon as the last cup of coffee has gurgled down. If there's a mass

Bunch Barber Shop.

meeting, a class meeting, or any student activity, where are they? Too busy to attend. If there is anything at all of interest to the student body, they haven't the time to be annoyed.

Ya' know, getting good grades isn't the main idea in a real technical education. Ya want all around polishing, and the only kind of a real polish is friction, rubbing elbows with your fellow students. You'll get lots of hard knocks, but it's those hard knocks that wear off your soft spots only.

And as for the grind, well, he goes through school unknown, and probably through life as well, unless he makes a startling discovery. Usually we see him spectacled and old before his time, carefully and laboriously grinding, grinding, grinding!

So, old timer, do your studying when you ought to. And when Saturday night rolls around, be free from such evils, and take in the school activity that is on deck.

By the way, get our seats about the middle of the house—sixth or eighth row.

"Jokes may come, and jokes may go,

But Dean's go on forever."

Subscribe for the Miner.

MINERS--WHAT'S WANTED?

IF

It's a Kokak,
It's a Text-book,
It's Drawing Material,
It's a box of Fine Stationery,
It's a Waterman or Parker Pen,
It's a box of Tenbrock's Candy,

SEE

SCOTT.

Our Goods, Prices and Service

Bring you back for
more of our

Good Things to Eat

Model Grocery

Telephone Nos. 279 and 78.

We are not Satisfied Unless You Are

When we make that new,
hand-tailored suit for you

"Let's Get Acquainted."
COLLEY, The Tailor,
Cleaning and Pressing.

Phone 17.

Pine Street. ROLLA, MO.

Chemistry Students!

I have the PERIODIC TABLE on sheets LEFAX size (3 $\frac{3}{4}$ x6 $\frac{3}{4}$ inches) for loose leaf books. This also give Atomic Weights and their Logs.

2c Each

D. H. MORGAN.

If you have not subscribed for
the MINER, do it now!

Miners 41, Pittsburg Normals 0.

Continued from First Page.

resort to kicking when line plays fail. Kis tackled in his tracks by No. 14. Kansas penalized 5 yards. Ball on Normal's 10-yard line, from where Imlay scores the last touchdown. Kiskaddon kicks the goal. Score, Miners 41, Normal 0.

Imlay, McCartney and Nevins replaced by Larsh, Doeling and Heman.

Miners' ball on Normal 25-yard line. Miller fails at a try from placement. Normal's ball on own 20-yard line. Vogel replaces Kis at quarter. Normal kicks out of bounds. Miners' ball on own 40-yard line, when time is called for third quarter.

Heman makes a 10-yard gain. Miners' offside calls for a 5-yard penalty. Miners penalized 30 yards. Dawson replaces Heman. Larsh picks a hole, and Dawson negotiates a 10-yard gain. Several plays thru the Teachers' line fail, and Brazill kicks to their 10-yard line. Normals get a 5-yard penalty for off-side. Both teams fighting hard when time is called.

Final score: M. S. M. 41; K. S. N., 0.

Attention, Miners.

In order to stimulate interest in the team, and to help win games by good rooting, The Missouri Miner will offer a prize of \$3.00 for the best new yell or song submitted, \$2.00 for the second best, and \$1.00 for the third. All efforts are to be submitted to a committee composed of J. J. Allen, J. C. Ingram, Fred Grotts, J. C. Miller and G. E. Johnson, and are to be in by noon October 11th. The winners' names, together with their yells, will be published in the Miner of October 15th. A mass meeting will be held that evening, and the new yells will be tried out. Get busy, fellows, send in your suggestion, and collect the coin from the Business Manager of the Miner the day the suggestions are published.

**The
Rolla State Bank
invites
acquaintance
and
accounts.**

**UNITED
Electric Shoe Repairing Co.**

Eighth Street,
Rolla, Missouri,
Next Door to Herald Office.

**Your Shoes Fixed
While You Wait.**

Good Leather, Good Work,
Right Prices.

Give us your trade.

Harry R. McCaw,

**Furniture,
Carpets,
Undertaking,
Licensed Embalmer.**

Pine Street,

Telephones:

Store 116 Residence 171

They do me wrong
Who say I come no more,
When once I knock,
And fail to find you in;
For every day
I stand outside your door,
And bid you wake,
And rise to fight and win.

Doyle: "Isn't the ore more or
less scattered all through the
formations?"

Dr. Cox: "Well, yes, more or
less, but mostly less."

Kline (in Economic Geology):
"The ore deposits in Southeast
Missouri are cone shaped, and
spread out from the center."

Get your subscription for the
MINER in at once.

THE MISSOURI MINER

A weekly paper published by the Students, in the interest of the Alumni, Students and Faculty of the Missouri School of Mines and Metallurgy, Rolla, Mo.

Entered as second class matter April 2, 1915, at the post office at Rolla, Missouri, under the Act of March 3, 1879.

STAFF.

J. J. Doyle, - - - Editor
B. L. Ashdown, Assistant Editor
H. E. Koch, - Business Manager
Associates:
E. G. Deutman, - Advertising.
L. A. Turnbull, Asst. Advertising
G. E. Ebmeyer, - Athletics.
M. L. Terry, - Circulation.
J. K. Walsh, - Exchanges.

Published Every Friday.

Rates: { Single Copies, - 5 Cents
Per Month, - 15 Cents
Per Year, - \$1.00

Y. M. C. A. Smoker.

The students and faculty of M. S. M., and the men folks of Rolla were delightfully entertained by the Y. M. C. A. at their smoker in Mechanical Hall last Friday evening. The program opened with a talk by J. L. Head, '16, president of the local chapter which was followed by a short and interesting talk by Professor Forbes. Chavex, the Mexican Magician entertained the crowd with several excellent slight-of-hand performances. Greenberg and Gray then put on a classy bout, with lots of "punch" to it, and two good wrestling matches, the first between Weiberg and Nat Lawrence, the second between Schnaidt and Murphy, were staged. A pie-eating contest, in which ten Freshmen covered their countenances with the soft and sticky ingredients of chocolate pies, was perhaps the most interesting number. The Miner's orchestra, led by Mr. Scott, furnished many very good numbers during the evening.

At the close of the entertainment, an excellent Dutch luncheon was served. Take it all in all, the Y. M. C. A. smoker was one of the best we have had, and we look forward with pleasure to the next "Y" entertainment.

Cheers and Cheering.

Last Friday we saw the Miners trim the Kansas Normal of Pittsburg, to the tune of 41-0. The Miners seem to be coming back with the "old time stuff", and the team looks nearly as good as the Champs of last year. In the first half, when the game had not been won, there was a little good cheering, but as soon as the team had a fairly good score ran up, the rooting died down, in spite of the work of Messrs. Allen, Kahlbaum and Murphy, the cheer leaders, and when a good play had been made, the noise from the grand stand sounded like a long distance call on the telephone—faint, and far away.

Cheering the team, whether they are winning or losing, is half the battle. We cannot all get out on the field and play the game, but we can all get out and "get in the game" by rooting, and rooting hard. The next time a game is staged on the home grounds, get in the stand early, bunch up, and when the cheer leaders start, follow their motions and cheer to the best of your ability. Give the "nine rahs" whenever a good play is made, whether the fellow that makes the play is a Miner or an opponent, and "spell it out" every once in a while. When the game is over, don't break the iron railing in an effort to get down town; stay in your seats a moment, and give the visiting team a good yell for putting up such a good game against the Miners. They'll feel better after their beating, if you do.

The Sophomores have shown originality by having printed a football schedule in pocket card size. That's the idea Sophs, keep it up. Its a good and early start and we look for better to come. Choose a good man to represent you and write for the Miner, for that's another good step and then keep on stepping until you walk on the feet of the other classes and get them stepping too.

The Delmonico

W. E. HANS, Prop.

Short Orders.

Banquet Ice Cream.

Sunday Special.

Finest line of
Cigars, Cigarettes and Tobacco

Your patronage solicited.

SMAIL'S SMOKE SHOP.

Periodicals and Stationery.

Morse's Chocolates.

Candy, Drinks, Cigars
and Tobacco.

Johnstone's Chocolates.

SATURDAY EVENING POST.

Johnson Bros.

Bowling Alleys,
Pool, Billiards.

Phone No. 93.

Star Tailoring Shop AND HAND LAUNDRY.

E. A. Graham, Prop.,
8th Street, Rolla, Mo.

If you want your Clothes Cleaned and Pressed up in the Best and Latest Fashion, call up Phone 155. All work guaranteed. Called for and delivered. My work speaks for itself.

Radcliffe: "Terry, what is a truncated corner?"

Terry: "A truncated corner is one removed by a plane parallel to a corner."

Radcliffe: "Massey, what is it?"

Massey: "It's a corner taken off."

Home, Sweet Home,
Sept. 24, 1915.

My Dear Son:—
I received your letter about that awful fire in Rolla, and am so much relieved to know that you escaped with only a few bruises and the loss of your clothes, books, instruments, etc.
Just as soon as you get located, be sure and have B. H. RUCKER write fire insurance to cover everything you have, and if you can spare the amount from your allowance, you ought to take out a little life insurance also.
Yours affectionately,
FATHER.

Each issue of the Miner contains about fifteen columns of writing. It is quite a task for a few of us to do all the writing and we solicit the aid of all students to help us publish a number of local items. It is also impossible for the few of us to get local items, because we come in contact with but few of them.

We have, therefore, adopted a new plan to get all the locals possible. We ask that each fraternity and club choose a man to send in the locals for their respective fraternity or club. We would like to have any other news or writing he can give us besides the locals. We are not going to select this man from each fraternity or club, but are leaving that to you, because you know better than we do who will best represent you and your interests.

We ask also that each class choose a representative to write up all the news of their respective class, and send it to The Miner.

All items must be in before Tuesday evening of each week. You can give your copy to any man on the board and he will take care of it.

We hope and expect every class, fraternity and club to elect or select these representatives immediately and that we shall receive for all issues following this one, numerous locals and articles of interest.

McCartney had a tooth shattered in the first football game of the season, and the first time he carried the ball. Nevertheless, Mac played the whole game through. Some pep.

LOCALS.

Carl Stifel and O. L. Lumaghi spent the latter part of last week in St. Louis.

We all wonder why Deckmeyer was so eager to get Bob Heller in the pie eating contest?

Stokes enjoyed a trip to Steelville Saturday and Sunday. Some Freshmen are certainly lucky in fussing?

Did Alfend believe his degree in mining depended on his ability to consume pie? If so, Faculty, attention!

We notice that Massey's side line scrimmage of last Friday has developed his inclination to resume football. But why blush?

Gold is combining pleasure with work. We have heard other stories than those of broken arches since last Saturday. "Who gets the graft?"

A year ago last Sunday we twisted the Tiger's tail to a tune of 9 to 0 at Columbia. But they won't let us play in their back yard this year.

Mr. and Mrs. Lucian Erskine left Rolla Monday to spend a few days in St. Louis. Greene Erskine accompanied them. Steady there Tuesday night, Speed.

Harry Sides is in Ray, Arizona, on a business project. The Miner wishes Harry all the success possible, but would like to see him come back to school and finish.

E. H. Ruebel is working in a smelter at Collinsville, Okla. We have received Ruebel's Miner subscription, and hope to see "Rube" back for the second semester.

Mr. Robert Heller, one of Rolla's most enterprising financiers, left Rolla Monday for a tour of the middle west (St. Louis.) He says it is business, but, Bob, you can't fool all of the people all of the time.

Hiram Lawrence has returned to Rolla, after trying his luck with forestry at Maine University. He says they are too strong on the military stuff up there, and he had to dig trenches most of the time. I never raised my boy to be a soldier!

Mr. Herman Vogel left us Tuesday morning for Southeast Missouri. He will be gone three weeks or more. He has secured an emergency job as sampler for the Mine Lamotte. The only thing Vogel regrets is not to be

ALLISON,

The Jeweler.

Cigarette Cases.

DIAMOND LAVALIERS.

Hotel Baltimore.

EUROPEAN.

ROLLA'S FIRST-CLASS HOTEL.

Cafe service Unsurpassed.

Landon C. Smith,

Dealer in

Hardware, Harness and Farm Implements,

I have an excellent line of
Guns, Fishing Tackle and other
Sporting Goods.

Students Always Welcome.

able to stay out for football.

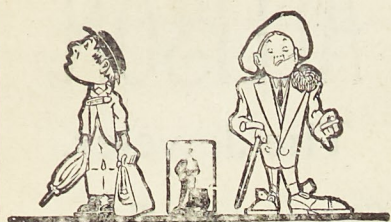
The Kappa Sigma fraternity entertained at 500 Saturday, Oct. 2, in honor of its pledges, F. L. Dover, W. L. Erskine, Robt. Springer and P. D. Wilkinson. Prizes were won by Miss Mary McCrae and Miss Nancy Harrison, Mr. F. L. Dover and Mr. H. G. Kamp. Mr. and Mrs. Jos. G. Campbell were chaperones.

Miners Off to Meet Illinois.

Coach F. E. Dennie left on the early morning train Friday for Urbana, Ill. He took with him the following football team to play Illinois University Saturday afternoon:

"Kelly" Miller, Brandy, Bock, Bruce, Askew, Wilson, Kleppel, Lyons, Kiskaddon, Raible, Im-lay, McCartney, Brazill, Dover, Dawson, Dowd, Krause, Nevin.

Friday afternoon a number of students left to witness the game.



AT

Keller's

YOU BUY

ED. V. PRICE & CO.'S
Tailored to Order Clothes.

HART, SCHAFFNER &
MARX ready to wear.

MANHATTAN SHIRTS

STETSON HATS.

WALKOVER SHOES.

B. V. D. UNDERWEAR.

We'll treat you right.

We'll make your linen white.

R. M. STROBACH

Steam Laundry.

PHONE 88.

List of Paid Subscriptions

To the Miner received up to
Wednesday, Oct. 1, 1915:

Previously acknowledged, 156.

H. A. Buehler, Rolla.

E. C. Burkhart, Rolla.

L. Erskine, Rolla.

G. Erskine, Rolla.

J. R. Fiedler, Rolla.

A. Gale, Rolla.

O. Gotsch, Rolla.

D. Greenburg, Rolla.

Prof. E. G. Harris, Rolla.

C. Hippard, Rolla.

N. C. Hutsinpillar, Rolla.

N. M. Lawrence, Rolla.

Ed Long, Rolla.

D. H. Morgan, Rolla.

Attention, Alumni.

Continued from First Page.

nomination, with a partial record of each man, is published on the last page of this issue of the Miner. You have the privilege of voting for a fine bunch of fellows, men who are boosters, and who have the ability and the desire to make the Alumni Association a success. The need of such an association is readily seen when one compares the greater number of Alumni we have to the small number of other mining schools, who, nevertheless, have very strong associations of graduates.

In order to be sure to get a vote from every Alumnus, a printed ballot is on the back of this paper, with the names of the two men for each office and the eight men for the Advisory Committee. Scratch one man for each office, and four for the Advisory Committee, and send the card in to Professor Gottschalk, who is Chairman of the committee appointed to canvass the ballots, at once. If you want to send in a subscription to the Miner, send it along with the ballot, and the ballot will be turned into the committee.

We are all working to make the Alumni Association a grand success, so send in your ballot at once, and if you find an M. S. M. man who has not heard of the Association, put the thing up to him and get him to send his ballot in at once.

C. Stifel, Rolla.

P. D. Wilkinson, Rolla.

Mrs. Rhoda Allen, New York City, N. Y.

G. C. Barrer, Indianapolis, Ind.

E. J. Chamberlain, Eldorn, Ia.

J. H. Chase, Logansport, Ind.

R. E. Dye, Cobalt, Ont.

Eldon E. Cook, Osborn, Mo.

Mrs. S. M. Crow, St. Louis, Mo.

H. G. Halsey, Kansas City, Mo.

R. W. Hayden, Muncie, Ind.

R. B. Mitchell, Wilburton, Okla.

A. L. Pollard, Bataria, N. Y.

IF you are particular about your Linen, see

McCARTNEY

Webster Laundry Co.

Phone 227.

**Patronize an
M. S. M. Booster**

Take Your Film Rolls
to the

Baumgardner Studio

For Development.

PROMPT SERVICE.

Model

Meat

Market.

J. A. Spilman

**Carries the largest
and most complete
line of Hardware in
Southeast Missouri.
Motto: Quality first,
Price second.**

Mrs. L. C. Reilly, St. Louis.

E. A. Ruebel, Collinsville, Okla.

T. E. Shaw, Bridgeport, Conn.

Tau Beta Pi.

The following men have been
pledged Tau Beta Pi.

E. L. Beyer.

H. E. Koch.

C. E. Peterson.

R. S. Burg.

J. S. Hoffman.

J. S. Brown.

B. L. Ashdown.

Patronize our advertisers.

Attention, Miners!

PARKER HALL,

Under the Auspices of the 1916 Rollamo.

One Night Only, Saturday, Oct. 9, 1915.

THE FAVORITE LYCEUM DUO:

Earl J. Gray, "Chautauqua Mimic,"

Thos. G. Hanley, "Lyceum Soloist,"

CONNOISSEUR OF CLASSICAL HUMOR.

EMINENT LYRIC TENOR AND TYROLEAN YODELER.

Refined Comedy. Characteristic Impersonations.

Classical Ballads and Tyrolean Yodeling.

Popular Melodies and Harmonious Selections.

PART ONE.

"THE IRISH STATESMAN,"

MR. EARL J. GRAY,

Assisted by

MR. THOMAS G. HANLEY.

VOCAL SELECTIONS.

"Carissima," from The Red Feather.

Mr. Chauncey Olcott's Favorite IRISH MELODIES.

"Mother Machree."

"A Little Bit of Heaven."

"When Irish Eyes are Smiling."

PART TWO.

"MY LITTLE GREY HOME IN THE WEST."

A characteristic study of New York's Underworld.

CAST:

Bob Sherwood, a Reformed Convict, - - MR. GRAY.

Kid Stevens, a Society Crook, MR. HANLEY.

Place, The Kid's Apartments, Bronx, New York City.

Time, - - - Present.

"A PLAYLET WITH A MORAL."

PART THREE.

"The Mayor of Milwaukee."

MR. EARL J. GRAY.

Assisted by

MR. THOMAS G. HANLEY.

Refined German Comedy.

TYROLEAN YODELING.

Harmonious Selections:

The Lover's Stroll (Yodel) Exclusive.

Broadway Love, - Descriptive.

When Sunday Comes to Town, Comique.

Interlude - Part One-Two and Two-Three, Selections will be rendered by Students Missouri School of Mines, Dowd, Scruby, Moore, Kahlbaum---Quartette. Walter Scott, Saxophone. Miss Olive Scott, Pianist.

Admission, Adults, 25c. Children 15c. A Few Reserved Seats at 35c.

SEATS ON SALE AT SCOTT'S DRUG STORE.

Miner-Illinois Game Returns.

Curtain 8:30.

TO THE ALUMNI:

The report of your committee appointed to receive and count the ballots for nomination of officers of the Missouri School of Mines Alumni Association is given below.

The votes for officers should be sent on the appended ballot to Prof. V. H. Gottschalk, so as to reach him not later than October 25th, on which date the committee will open and count the ballots, and announce the result of the election.

Respectfully,

V. H. Gottschalk, '98.

F. B. Powell, '06.

D. H. Radcliffe, '13.

For President (vote for one):

W. R. Cox, ex-'96, E. M. '11, of W. R. Cox and Staff, consulting mining engineers, 120 Broadway, New York City.

D. C. Jackling, '92, mining engineer and capitalist, Hobart Building, San Francisco, Calif.

For Vice-President (vote for one):

R. E. Hoffman, '05, manager of works Atlas Portland Cement Co., Hannibal, Mo.

G. E. Lyman, '02, chief mining engineer Madison Coal Corporation, Edwardsville, Ill.

For Secretary and Treasurer (vote for one):

G. H. Cox, E. M. 1914, Professor of Geology and Mineralogy School of Mines and Metallurgy, Rolla, Mo.

J. C. Ingram, Assistant Professor of Chemistry School of Mines and Metallurgy, Rolla, Mo.

For Advisory Committee (vote for four):

1. H. G. S. Anderson, '08, research work in mercury extraction, Hotel Turpin, San Francisco, California.

2. R. E. Dye, '12, superintendent high grade plant and low grade cyanide plant, Buffalo Mines, Ltd., Cobalt, Ontario.

3. J. A. Garcia, '00, of Allen & Garcia, consulting engineers, McCormack Building, Chicago.

4. L. E. Garrett, '01, Assistant Professor of Mathematics School of Mines and Metallurgy, Rolla, Mo.

5. H. H. Nowlan, '13, Ray Consolidated Copper Co., Miami, Arizona.

6. A. L. Pollard, '09, assistant superintendent malleable plant Johnston Harvester Co., Batavia, N. Y.

7. R. F. Rucker, '06, assistant superintendent Aluminum Ore Company, East St. Louis, Ill.

8. C. R. Wilfley, '05, manager Barstow Mines, Ouray, Colo.

BALLOT.

For President.

(Vote for One.)

W. R. COX.

D. C. JACKLING.

For Vice-President.

(Vote for One.)

R. E. HOFFMAN.

G. E. LYMAN.

For Secretary and Treasurer:

(Vote for One.)

G. H. COX.

J. C. INGRAM.

For Advisory Committee:

(Vote for Four.)

H. G. S. ANDERSON.

R. E. DYE.

J. A. GARCIA.

L. E. GARRETT.

H. H. NOWLAN.

A. L. POLLARD.

R. F. RUCKER.

C. R. WILFLEY.