



24 Sep 1915

## The Missouri Miner, September 24, 1915

Follow this and additional works at: [https://scholarsmine.mst.edu/missouri\\_miner](https://scholarsmine.mst.edu/missouri_miner)

These newspapers reflect the attitudes, perspectives, and beliefs of different times. Neither the library nor the university endorses the views expressed in these collections, some of which contain images and language which may be offensive to some readers.

---

### Recommended Citation

"The Missouri Miner, September 24, 1915" (1915). *The Missouri Miner Newspaper*. 32.  
[https://scholarsmine.mst.edu/missouri\\_miner/32](https://scholarsmine.mst.edu/missouri_miner/32)

This Newspaper is brought to you for free and open access by Scholars' Mine. It has been accepted for inclusion in The Missouri Miner Newspaper by an authorized administrator of Scholars' Mine. This work is protected by U. S. Copyright Law. Unauthorized use including reproduction for redistribution requires the permission of the copyright holder. For more information, please contact [scholarsmine@mst.edu](mailto:scholarsmine@mst.edu).



M. S. M. Library

# THE MISSOURI MINER.

Missouri School of Mines and Metallurgy, Rolla, Mo.

Vol. 2, No. 3.

Friday, September 24, 1915.

Price 5 Cents.

## Missouri Mining Association.

The purposes of the association are best expressed by quoting a section of the constitution, which reads as follows:

The objects of the association shall be:

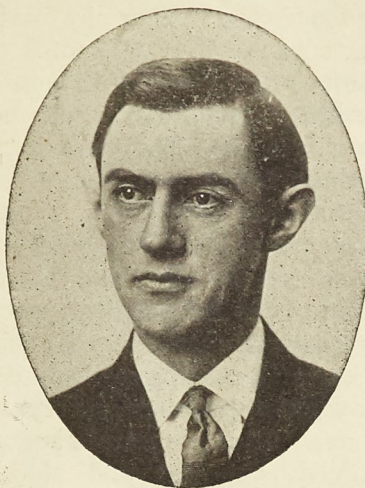
FIRST. To advance the knowledge of mining among its members.

SECOND. To promote good fellowship among the students and alumni and others interested in mining.

THIRD. To bring the school into closer relations with the engineering profession at large.

In a few days there will be posted on the bulletin board a list of eligible members, and all students fulfilling these requirements should join. It matters not what course you are taking; the Mining Association is affiliated with the American Institute of Mining Engineers, and the Engineers Club of St. Louis, an organization active in all branches of engineering. Abstracts of the best papers of the Association may be published in the bulletin of the American Institute of Mining Engineers. The Engineers Club offers to print in full papers delivered before the student society during the school year, and likewise grants a membership to the club to the student elected by the Association for having delivered the best paper.

Last year the Mining Association had thirty members. Of how many shall it consist this year? Will the Junior and Senior classes permit an organization with a purpose so vital to them all, to lag and finally die from lack of support? This organization is not intended to wrest from you any of your spare time, but it is intended to work for your



Durward Copeland.

future good.

If you join, like we want you to, do not stay away from meetings, because you think you will be bored by one of the local members making a talk of his personal experiences. None of us are trained speakers; if we were, we probably would not be talking for your criticism.

The Mining Association should be one of the liveliest organizations in the School. Will you join it, and make it so?

J. C. MILLER,  
Treasurer.

## Mucker's Fire.

Fire broke out in the Muckers' new club house at noon Wednesday, and, had it not been for the good work of the students in removing their things and getting the hose into action, the results might have been disastrous. As it is, Cooper and Aid are worst sufferers, losing nearly all their clothing and books. Most of the other members of the club arrived in time to save their property. With the exception of the roof, the house was not badly damaged.

The Miner extends its sympathy to the Muckers, and trusts it will not be long before they are re-established.

## Professor Copeland's Article.

The leading article in the current issue of the Engineering and Mining Journal is "Tin Ore Dressing at Llallagua, Bolivia," by Durward Copeland and Scovill E. Hollister. Every one around M. S. M. knows, or has heard of, Professor Copeland. Hollister graduated with the class of 1913, and at present is Mill Superintendent for the Cia. Estanifera de Llallagua, Llallagua, Bolivia. Professor Copeland, before his return as Director to M. S. M. last spring, was Metallurgist for the above company, and since his resignation has been studying the tin mining and milling industry for the same firm.

The article discusses climatic and living conditions in Bolivia, the tin production in that country, with an interesting description of the ores and the primitive methods of treatment, and a description of the methods now used in mining and milling the ores. Four very good illustrations of the plant, a cassiterite vein, and primitive methods of concentration and transportation are presented with the article. There is also some cost data on the production of ores and concentrates. This article is the first of a series which are to be continued in ensuing numbers of the E. & M. J.

Professor Copeland, from the latest information received in Rolla, has left Manila, after a visit to Japan, and is now on his way to Singapore. He will not return to Rolla in October, as we were hoping, but it is possible that he will be with us about the first of the year.

Get your subscription for the MINER in at once.



**School Work.**

The writer takes it for granted that every man who enters the M. S. M. comes here to work efficiently. By work he does not mean manual labor, nor does he mean that he expects the student to be continually pondering over his books; but he does mean that he expects the prospective engineer to work by applying and exercising his mind, ideas and ability both for his own good and for the good of his school.

In engineering studies we learn that work is force times distance. As much work can be done by a small force acting through a long distance as can be done by a large force acting through a short distance. But think of the time it takes the small force to act through a long distance as compared with that of a large force acting through a short distance. The point is this—a large force saves time. Therefore we should put force into all our undertakings and results will be forthcoming in a short time.

With this idea in view, concentrate your mind on your work when you study. Concentration is a great force, and if you use it when you study, the time of study will be short. Do your work systematically and keep your notes in logical form and order. Follow Professor Forbes' plan as he presented it in the preceding issue of the Miner.

Now your work, as I have said before, is not all for your own good, but also for the good of the school. Therefore use your force for the good of the school as well as for your own individual self. You do, of course, work for the betterment of the school when your class work improves. If you leave an excellent record behind you, when you graduate you are expected to make a record in the business world. But while here work for M. S. M. by supporting all student organizations and boosting all you possibly can. Don't be satisfied to get all you can out of the school, but give to

it your best efforts and help further the growing interests to a "greater M. S. M".

There are many ways in which you can support student organizations and enterprises, but you must use force to accomplish results in a short time. You can support the Miner by writing articles for it or by sending to its editors any news items you can collect. The Miner is your paper and it is what you make it. We on the board are but a small force, and need your help in order to put a "big push" behind the Miner. The same is true of the Rollamo. So get together and start the year right. Put a large force behind all student enterprises and organizations. If you are athletically inclined, come out and show us what you can do. If you can play football, basketball, baseball, or if you are a track man, come out and try to support athletics. You can also boost student activities by attending all class meetings, and taking an active part in all class affairs. The same applies to mass meetings.

Therefore, if every student will put force behind his efforts in supporting all student organizations, he will be doing work for the school; and as a result of the summation of all the student forces, we will have one large resultant force behind each student activity which will accomplish as much in one year's time as a small force of a few would accomplish in several years time.—B. L. Ashdown.

**The Miner One Day Late.**

The Miner is one day late this week. This was caused from the fact that the Herald office, which prints the Miner, has been issuing a daily paper during the Phelps County Fair, and were unable to print the Miner on time. The printers promise that this will not happen again.

Get your subscription for the MINER in at once.

# Model Grocery

**The Buckle  
of  
Rolla's Grocery  
Belt.**

**AUTO DELIVERY.**

Telephone Nos. 279 and 78.

## THE Rollamo Board

**ANNOUNCES  
THE**

### 1915-16 Lyceum Course.

Ada Roach Co. - Oct. 21, 1915

Jess Pugh, - Nov. 13, 1915

Schildkret Orchestra,  
Dec. 10, 1915

Thos. Brooks Fletcher,  
Feb. 17, 1916

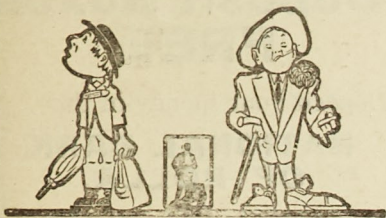
Concert Entertainers,  
March 6, 1916

**Season Tickets, \$2.00**

Turn out Miners, the Rollamo  
needs your help.

For sale by members of the  
Board.





AT

**Keller's**

YOU BUY

ED. V. PRICE & CO.'S  
Tailored to Order Clothes.

HART, SCHAFFNER &  
MARX ready to wear.

MANHATTAN SHIRTS

STETSON HATS.

WALKOVER SHOES.

B. V. D. UNDERWEAR.

Home, Sweet Home.  
Sept. 24, 1915.

My Dear Son:—

I received your letter about that awful fire in Rolla, and am so much relieved to know that you escaped with only a few bruises and the loss of your clothes, books, instruments, etc.

Just as soon as you get located, be sure and have B. H. RUCKER write fire insurance to cover everything you have, and if you can spare the amount from your allowance, you ought to take out a little life insurance also.

Yours affectionately,  
MOTHER.

### Sedalia State Fair.

The School of Mines and Metallurgy will have a display at the State Fair at Sedalia next week. Besides having a gasoline assay furnace in operation every day, a calorimetric determination of the heating value of coals will be made on specified days. The mineral display will contain lead ore and metallic lead from Flat River, zinc ore and metallic zinc from Joplin, lead, nickel, cobalt and copper from Mine LaMotte, Mo., and several other minerals from this and other states.

The school will be represented by M. H. Thornberry, D. H. Radcliffe and J. J. Dowd, and the Bureau of Geology and Mines by F. C. Greene.

### LOCALS.

J. G. Galbraith, who is working in a mill at Joplin, spent the first part of the week visiting in Rolla.

Kiskaddon has reported for football practice. With "Kis" back at quarter our back field will be well rounded out.

Last Friday the Rolla baseball team played at Salem. Salem won by a score of 5 to 4 in the seventh inning, when rain ended the game. Bill Kamp and "Kid" Wilson played with Rolla, and each put up a good game.

Heard in Water Supply:

Prof. H. Why is a sample of water packed in ice when shipping it to a bacteriologist for examination?

Senior: To prevent an increase of bacteria, and to keep the water at 65 degrees Fah-

The names of Messrs. Heinz, McCarty and Shore should be added to the Prospector's list in last week's Miner.

The Muckers' Club, through the Miner, wishes to express its sincere appreciation for the very kind consideration rendered by the Clubs, Fraternities and townspeople during and after the fire.

We are pleased to report that Ed Schuman, formerly of the class of '16, was recently pledged to Phi Alpha Delta, the honorary legal fraternity at Missouri State University.

"Dutch" Brandenburger is in our midst again—another valuable addition to the 1915 football machine. "Dutch" has been mucking down in Bisbee, Arizona, and is in good shape, physically.

The Kappa Alpha Fraternity entertained their friends most delightfully Saturday evening last in honor of their "Pledges," Messrs. Wayman, Crow and Geo. Burnet, of St. Louis, Anderson, of Springfield, C. A. Peterson, of Syracuse, N. Y., and P. Bohart, of Fort Worth, Texas. The evening was spent in dancing and playing cards, and was thoroughly enjoyed by all.

**ALLISON,**

The Jeweler,  
For Diamonds.

STUDENTS,

Come in and get acquainted.

**Miners!**

**McCARTNEY**

Is still in the Laundry business. Agent for Webster Laundry Co. Service twice a week.

Phone 227.

**Hotel Baltimore.**

EUROPEAN.

**ROLLA'S  
FIRST-CLASS  
HOTEL.**

Cafe service

Unsurpassed.

### M. S. M. Man Makes Important Discovery.

Herbert R. Hanley, '01, assistant manager of the Bully Hill Copper Mining & Smelting Co., Winthrop, Calif., after four years of research work has solved in a practical manner the problem of obtaining electrolytic zinc from crude and complex ores. His plant is now turning out four hundred pounds of electrolytic zinc daily. Mr. Hanley has donated a sample of the new product to the M. S. M. collections.



## THE MISSOURI MINER

A weekly paper published by the Students, in the interest of the Alumni, Students and Faculty of the Missouri School of Mines and Metallurgy, Rolla, Mo.

Entered as second class matter April 2, 1915, at the post office at Rolla, Missouri, under the Act of March 3, 1879.

### List of Paid Subscriptions

To the Miner received up to Wednesday, Sept. 22, 1915:

C. E. Bardsley, Rolla.  
Prof. J. W. Barley, Rolla.  
C. W. Bower, Rolla.  
M. F. Bowles, Rolla.  
Prof. F. H. Frame, Rolla.  
F. Heman, Rolla.  
H. D. Kline, Rolla.  
H. A. Kluge, Rolla.  
F. Lane, Rolla.  
E. A. Lynn, Rolla.  
Tom Leach, Rolla.  
F. R. Laney, Rolla.  
E. J. McNely, Rolla.  
M. McCarthy, Rolla.  
J. S. Reilly, Rolla.  
Walter Scott, Rolla.  
R. W. Springer, Rolla.  
V. Smiley, Rolla.  
H. F. Shore, Rolla.  
H. D. Scruby, Rolla.  
H. R. Stahl, Rolla.  
Rev. H. N. Tragitt, Rolla.  
W. W. Weissbach, Rolla.  
J. A. Worley, Rolla.  
H. Weiser, Rolla.  
J. T. Young, Rolla.  
C. C. Conover, Springfield, Ill.  
H. D. Dunavan, Clarksdale, Ariz.  
John Garcia, Chicago.  
A. K. Hammond, St. Louis.  
G. E. Kublin, St. Louis.  
J. A. Phillippi, St. Louis.  
K. V. B. Rossman, Caney, Kan.  
A. L. Trent, Mascot, Tenn.

We are pleased to report that the Missouri Miner is to be listed in the American Newspaper Annual and Directory for 1915. Another boost for the Miner! Sit fast, hold tight, and watch us grow! 500 subscribers or bust!

## Talks With Freshie's Roommate.

I. Hazing.

"So, they had you out, eh? Well, well! Took you down to Frisco pond? No; Is that so? Say, you're lucky! I remember when it was a special dispensation on a Sophomore's part to even allow a Freshman to run down town after dark for a ham sandwich and a cup of mud.

\* \* Whaddayer crabbin' about? Handled you rough, you say? Say, listen, old roomy, that handling isn't half as tough on the beef as the reception the cold world gives you when you start shiftin' for yourself—and you'll have to stand that! And listen, kid, it'll all come out in the wash! Tomorrow morning, as usual, you'll hate to get up—but the stiffness will be nix—so why take it to heart. After all, it's part of the game, and you'll get your chance next year. Take it all with a stiff lip—you'll have to in the end, anyway."

## M. S. M. Athletic Association Picture Show.

Through the courtesy of Mr. Smith of the Electric Airdome, the proceeds of the picture show next Wednesday evening, the 29th, will go to the Athletic Association. The Miner's Mandolin Club will furnish the music. A good show is promised. Tickets can be obtained from Coach Denie, officers of the Athletic Association and the Miner Board. Admission, 10 cents. All out!

## Y. M. C. A. Smoker.

The M. S. M. Chapter of the Y. M. C. A. intends giving a Smoker in Mechanical Hall Friday evening, Oct. 1, 1915. Students and Faculty are invited to attend. A good time is assured.

Lesniak, Leo Lyons, and Schroer the class of 1916, and Meador, Craig and Freudenberg of the class of 1917 are with the Butte Superior Copper Co., at Butte, Montana. They are working to get a stake with which to return to school next year.

## Deposit Boxes FREE.

Deposit your money in the

## NATIONAL BANK OF ROLLA,

The oldest and largest bank in Phelps or adjoining counties.

We solicit the accounts of the Students.

**Safety Boxes Free to Our Customers.**

## Landon C. Smith,

Dealer in

**Hardware, Harness and**

**Farm Implements.**

**Plumbing and Heating**

I have an excellent line of Guns, Fishing Tackle and other Sporting Goods.

Students Always Welcome.

## Elite Cafe

Cleanest and Best Eating House in Town.

SPECIALTY:

Home-Made Ice and Soft Drinks

**Student's**

**Luncheon**

**Headquarters**

**Clarence Trenkel**

Seventh Street.

PROP.

## Star Tailoring Shop

**AND HAND LAUNDRY,**

E. A. Graham, Prop.,

8th Street,

Rolla, Mo.

If you want your Clothes Cleaned and Pressed up in the Best and Latest Fashion, call up Phone 155. All work guaranteed. Called for and delivered. My work speaks for itself.

Get your subscription for the MINER in at once.



PHONE 88.

R. M. STROBACH,  
Steam Laundry.

Your Bosom's Friend

RATES TO STUDENTS.

Do we know what a secret is? Certainly we do. It's something somebody tells everyone else in a whisper. A gossip is a person who can make five by adding two and two together.

Ever hear any of the latter around Rolla?

Send the MINER home. The folks will be glad to get it.

### Miner's Phthisis.

For several months past some of the leading gold-mining companies of the Rand have been conducting experiments in electric blasting in order to test the theory that this method will materially assist in minimizing the fine dust from blasting—accepted as the most direct cause of miner's phthisis—which is at present so wide-spread in connection with the Rand gold-mining industry. One of the latest syndicates has for some time been experimenting in this direction, and more recently the General Mining and Finance Corporation has been conducting similar tests. Several stopes were fired with very satisfactory results in the Meyer and Charleton mine, and it is now stated that the management has decided to introduce the electric system throughout the mine. It is hoped to have the electric system of firing so introduced in the mine that blasting will be done by pressing a button on the surface. This insures that the miners will not be forced to inhale the fine dust, and all that is then required is the proper ventilation of the mine before the return of the miners. In case the electric tests now being conducted are a pronounced success, as seems likely, this method of blasting will undoubtedly be incorporated in the mine regulations, and will go a long way toward minimizing the danger to health at present caused by the fine dust attendant upon the prevailing practice.—M. I. Tech.

### A Helper in a Time of Storm.

"I thank you for the flowers you sent," she said,  
And she smiled and blushed, and drooped her head.

"I'm sorry for the words I spoke last night;  
Your sending the flowers proved you were right—  
Forgive me."

You can lead a man to college, but you cant make him think.

## Send Your Films

TO

The Hammond Finishing Co.

1901 Victor St.,

ST. LOUIS,

To be developed and printed.

We combine quality with elbow-grease and give you good work quick.

POPULAR PRICES.

The only plant of the kind in the city running 24 hours a day during the busy season. A trial order will show you why.

School of Mines Men! Give your work to E. B. Weiberg. He will save you postage.

### Extra Edition.

"Let me print a kiss upon your lips."

She nodded her sweet permission.

We started to press, and I rather guess

We printed a full edition.

"But one edition is not enough,"  
She said with a charming pout;  
So again in the press the form we placed;

And we got several extras out.

—William Purple Cow.

A new rule will go into effect this fall requiring all students who wish to be excused from gymnasium work on account of ill health to be examined by the college physician.

—Case Tech.

### White House Professor Discovered It.

"Hard times come in cycles, and a Columbia professor has just discovered the logic of it."  
"Purely cycle-logical, eh?"—  
Judge.



We are not Satisfied

Unless You Are

When we make that new,  
hand-tailored suit for you

"Let's Get Acquainted."

COLLEY, The Tailor,

*Cleaning and Pressing.*

Phone 17.

Pine Street. ROLLA, MO.

STAFF.

J. J. Doyle, - - Editor  
B. L. Ashdown, Assistant Editor  
H. E. Koch, - Business Manager

Associates:

E. G. Deutman, - Advertising.  
G. E. Ebmeyer, - Athletics.  
M. L. Terry, - Circulation.  
J. K. Walsh.

Published Every Friday.

Rates: { Single Copies, - 5 Cents  
Per Month, - 15 Cents  
Per Year, - \$1.00

**SMAIL'S  
SMOKE  
SHOP.**

Periodicals and Stationery.

Candy. Drinks. Cigars  
and Tobacco.

SATURDAY EVENING POST.

If you have not subscribed for  
the MINER, do it now!

News of the Alumni.

M. H. Detweiler, '11, of Sunnyside, Utah, captain of the First Aid team of the Utah Fuel Co., won first honors in a recent competitive drill with the First Aid teams from five other competing camps. The prize was a trip to Panama-Pacific Exposition. Detweiler was accompanied by his wife and little son, Louis.

Fred H. Perkins, '99, is president and managing director of the Yavapai Mining & Milling Co., Phoenix, Arizona.

P. A. Moore, '13, chemist, United Railways Co., St. Louis, was one of the representatives appointed to the Paint Bureau of St. Louis.

Frank O. Blake, '10, is superintendent of Refineries, El Oso Asphalt Co., 624 Lissuer Bldg., Los Angeles, Calif. Blake is also interested financially in a manganese deposit.

H. A. Johnson, '08, is forman of the Desert Power and Mill Co.'s mill at Millers, Nevada, and C. M. Laizure, '05, is shift boss at the mine of the above company.

R. E. Armstrong, '08, is looking after a large machinery exhibit at the Panama-Pacific Exposition.

E. E. Price, '04, is operating an oil property in the Wyoming district. His address is University Club, Salt Lake City, Utah.

T. S. Carnahan, '04, is mining engineer for the Utah Copper Co., at Bingham, Utah.

A. L. Pollard, '09, Editor-in-Chief of the second Rollamo, writes interestingly from Batavia, N. Y., where he is Assistant Superintendent of the Malleable plant of the Johnston Harvester Company.

E. E. Chamberlain, '09, of the firm of Edwards & Chamberlain, Civil Engineers, Eldorado, Iowa, wants a young civil engineer. The salary is \$4.00 per day, and traveling expenses.

Send the MINER home. The folks will be glad to get it.

Sterling M. Smith

Just Received

the New

Regal

SHOES

FOR

Fall and Winter

A Shoe to Fit All Feet

UNITED

Electric Shoe Repairing Co.

Eighth Street,  
Rolla, Missouri,  
Next Door to Herald Office.

Your Shoes Fixed  
While You Wait.

Good Leather, Good Work,  
Right Prices.

Give us your trade.

The Delmonico

W. E. HANS, Prop.

Faust Blend Coffee

Sealshipt Oysters

Lowney's Chocolates

Finest line of  
Cigars, Ice Cream, Cold Drinks

Eighth Street.

Students are invited to give  
me their patronage.



### Football Notes.

In less than two weeks Coach Dennie and his squad of grid-iron stars will be ready for the referee's whistle at Urbana. The prospects for a good team are getting better day by day. This, of course, is in direct contrast to the "bear" dope usually spread by most of the school oracles around the country. With Askew, Imlay, Miller, McCartney and Wilson of last year's state championship team back in the harness since the start of the training season, as well as a big bunch of freshmen, and other new men from nearby colleges also out for berths on the 1915 machine, the outlook is flattering.

Kiskaddon donned the mole-skins the other evening, and our stock took a big jump. Quarterbacks of Kis' brand don't grow on every bush.

Coach Dennie has mapped out a program of practice which calls for stiff workouts every evening. Tackling the dummy, falling on the ball, running signals, and punting practice, have been the main stunts so far, but scrimmaging will have the call in the next couple of weeks, in order to harden the fellows for the Illinois clash on Oct. 9.

"Spike" has got the conscription fever along with the British, and you might as well look over the M. S. M. football goods emporium and pick out a suit that fits before it is too late. Beat the "Illini Suckers," instead of "Beat Miz-zoo" is the big noise this year.

### Spaulding Gives High Rating to M. S. M. 1914 Football Team.

Spaulding is considered the accepted authority in the United States on all sports—college sports in particular. The Spaulding Official Football Guide for 1915 has been issued. It gives a review of the work of all the college football teams in the country.

In this 1915 Guide the Missouri School of Mines received the highest mention. Under the heading of "Principal Football Records of 1914" appears the following:

College Team scoring most points (west) Missouri School of Mines.

Player scoring most points (west) J. Imlay, Missouri School of Mines.

Player scoring most touchdowns (west) J. Imlay, of Missouri School of Mines.

Player scoring most goals from touchdowns (west), Earl Freeman, of Missouri School of Mines.

Player scoring most goals from field in one game, (west), Earl Freeman, of Missouri School of Mines.

All through the Guide the Miners Football Team was given the greatest prominence.

Let's all get out now, show some of the "old time pep" make another record-breaker, and get a good write-up from Spaulding next year. Coach wants "everybody out". If you can't play, learn how, lend a hand with the

rubbing, or pass along a good word to the fellows trying. They'll appreciate it.

### Pipe and Bowl Club Hay Ride.

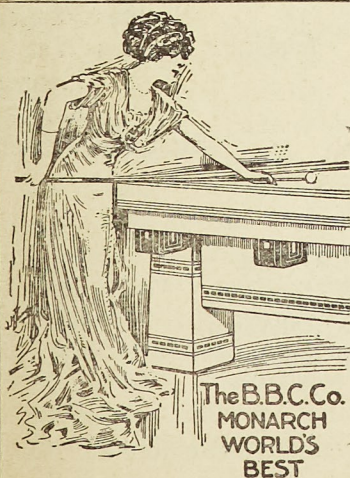
With a wonderful moon and a jolly crowd the weather man did not have a chance at spoiling a party given by the P. B. C.'s Tuesday night. The party, numbering twenty, on a hay frame drove out to the lovely country home of Dr. and Mrs. Northern. After general fun making, with "stunts," dancing and music, a delicious lunch was served, and it was with great reluctance that the party broke up. But the enthusiasm did not wane until the crowd disbanded after reaching town, and with hearty "good nights" they all voted the members of Pipe and Bowl the most royal of entertainers.

Chemistry Professor: I will now take some dydrogen, and then I will take some chloroform—

Sleepy Voice from the Rear—Good idea.—Missouri Outlook.

The first of this year's exchanges, the Kentucky Kernel, with J. Franklin Corn as Editor, has arrived. There are a number of rich, meaty kernels of Corn scattered throughout the paper, and we think it an improvement, both in name and in style, on the former "Kentucky Idea." Keep up the good work, Kaintuck!

Send the MINER home. The folks will be glad to get it.



## Johnson Brothers,

SUCCESSORS TO CHAS. PARKER.

Billiard Hall and Bowling Alleys.

Cigars, Cigarettes and Tobacco of All Kinds.

707 Pine Street,

Rolla, Mo.

Telephone No. 93.



## CLASS OFFICERS.

1916.

J. Chas. Miller, President.  
J. M. Schuman, Vice-President.  
J. J. Dowd, Secretary and Treasurer.

1917.

J. G. Reilly, President.  
R. P. Lyons, Vice-President.  
J. T. Young, Secretary and Treasurer.

1918.

O. E. Stoner, President.  
H. W. Doennecke, Vice-President.  
H. S. Clark, Secretary and Treasurer.

1919.

P. H. Bohart, President.  
J. S. Webb, Vice-President.  
R. J. Dowd, Secretary and Treasurer.

### ATHLETIC ASSOCIATION OFFICERS.

Fred Grotts, President.  
Dr. J. W. Barley, Vice-President.  
J. Chas. Miller, Secretary.  
Edw. Kahlbaum, Treasurer.  
W. H. McCartney, Business Manager.  
J. J. Allen, Cheer Leader.

### CAPTAINS OF ATHLETIC TEAMS.

Football.	Basketball.	Baseball.	Track.
Joseph G. Wilson.	F. R. Heman.	W. H. Kamp.	F. R. Heman.

### STUDENT COUNCIL.

Faculty.

F. E. Dennie.  
L. E. Garrett.  
J. C. Ingram.  
H. T. Mann.  
E. S. McCandliss.

1917.

L. M. Barker.  
J. S. Brown.  
E. S. Burkhart.

1916.

B. L. Ashdown.  
Fred Grotts.  
L. N. Hoppock.  
C. G. Stifel.

1918.

M. L. Terry.  
L. J. Zoller.

1919.

F. A. Krause.

### OFFICERS.

B. L. Ashdown, President.  
Fred Grotts, Vice-President.  
J. S. Brown, Secretary.

### ROBLLMO BOARD.

L. Erskine, '16,	-	-	Editor-in-Chief	J. J. Allen, '16,	-	-	Business Manager
Fred Grotts, '16,	-	-	Associate Editor	J. J. Dowd, '16,	-	-	Assistant Business Manager
J. G. Reilly, '17,	-	-	Associate Editor	G. E. Johnson, '16,	-	-	Treasurer
J. G. Wilson,	-	-	Athletic Editor.	J. Chas. Miller, '16,	-	-	Secretary
W. A. Shaw, '17,	-	-	Art Editor.	L. W. Enlers, '16,	-	-	Staff Photographer
J. J. Doyle, '16,	-	-	Advertising Manager				

Y. M. C. A.

J. L. Head, '16, - - - President  
G. E. Ebmeier, '17, - - - Vice-President  
H. J. Schiermeyer, '17, - Secretary and Treasurer  
Prof. C. R. Forbes.

Fred. Grotts.  
G. E. Johnson.  
B. L. Ashdown.  
Clem Hepford.

### MINING ASSOCIATION.

(Officers of M. S. M. Mining Association to be elected at meeting Tuesday evening, September 29, 1915.)