



14 May 1915

The Missouri Miner, May 14, 1915

Follow this and additional works at: https://scholarsmine.mst.edu/missouri_miner

These newspapers reflect the attitudes, perspectives, and beliefs of different times. Neither the library nor the university endorses the views expressed in these collections, some of which contain images and language which may be offensive to some readers.

Recommended Citation

"The Missouri Miner, May 14, 1915" (1915). *The Missouri Miner Newspaper*. 25.
https://scholarsmine.mst.edu/missouri_miner/25

This Newspaper is brought to you for free and open access by Scholars' Mine. It has been accepted for inclusion in The Missouri Miner Newspaper by an authorized administrator of Scholars' Mine. This work is protected by U. S. Copyright Law. Unauthorized use including reproduction for redistribution requires the permission of the copyright holder. For more information, please contact scholarsmine@mst.edu.

THE MISSOURI MINER

Missouri School of Mines and Metallurgy, Rolla, Mo.

Vol. 1, No. 16

Friday, May 14, 1915

Price 5 Cents.

PANTHERS DEFEAT MINERS IN WHIRL- WIND FINISH.

Rolla Ahead Until Last Three Events on Card.

Springfield Leader.

With Rolla leading when the card of events was nearly over, and but the high jump, broad jump and relay remained to be run off, the Drury Panthers came to the fore yesterday afternoon in a whirl-wind finish and took the triangular meet on Drury field by a bare six points.

The principal score was: Drury, 52; Rolla, 46, and Normal 28

Drury men captured eight first places, two second and three thirds. Rolla took six firsts, four second and four thirds, and Normal piled up its points with eight seconds and seven thirds.

With the day ideal as to sky and temperature, excellent records were hung up in this the first championship collegiate meet ever held in Southern Missouri. In the half mile, quarter mile, 220 yard dash, 100 yard dash, pole vault, high jump and half mile relay, better marks were established than ever before have been made in Southern Missouri.

The sensations of the afternoon were the work of Dover of Rolla, who breasted the tape in the century dash, with three watches catching him in ten seconds flat, and the work of Schmid, the blond Dutchman, of the Nee team, who fought it out down the stretch with Heman, the Rolla middle distance marvel, to a win, in both half mile and quarter mile runs.

Schmid's time of fifty-three and four-

THE 1915 ROLLAMO.

The long looked for and discussed Rollamo has arrived, and you can get yours at Baumgardner's Studio.

The new book is undoubtedly one of the best that has ever been put out by any Rollamo Board in the history of the school. The book itself is a handsome volume, bound in black leather, and printed on pebble paper. It is dedicated to Prof. Gottschalk, whose picture occurs in the first few pages.

The views of the grounds, and of the students in their various activities, are all well done and appropriately arranged. The different write-ups, poems and editorials are also done in a manner to be complimented.

All in all it is a work that brings much credit to those who were its authors, and brings much satisfaction to all those who have the welfare of the School of Mines at heart.

The Missouri Miner extends congratulations to the editorial staff, composed of W. Gammeter, editor-in-chief; C. G. Stifel, staff photographer; Myron Skidmore, business manager; E. K. Rueble, assistant business manager; W. H. McCartney, secretary; J. S. Hoffman, treasurer; and J. R. Maher, Wm. Elliott, H. M. Wilson, W. H. Kamp, and J. A. Worley, associate editors, for their excellent work.

fifths seconds in the quarter-mile is little short of the marvelous for the Drury track.

Evenly contested, each of the teams

Continued on Eighth Page.

THE MISSOURI MINER.

Do Your Banking

. . . with . . .

**National Bank
of Rolla.**

**Member of the
Federal Reserve Bank.**

**F. W. WEBB,
Cashier.**

SEE ME

FOR

Special Bargains

IN

Baseball Goods.

M. F. Faulkner,

The Rexall Store

COMMENCEMENT BALL MAY 27th.

To be Held in New Gymnasium.

The Annual Commencement Ball will be held in the new gymnasium Thursday evening, May 27th. The big gym floor is being put in readiness and will be used for the first time that evening. Music will be furnished by the celebrated Falkenhainer's orchestra of St. Louis. Tickets will sell for \$2.00 per couple; spectators \$1.00. Tickets entitle holder to supper. The ball is in charge of the following committee: Myron Skidmore, H. M. Wilson, H. T. Mann, W. H. McCartney and R. R. Dickerson.

ROLLAMO BOARD ORGANIZED.

The officers of the newly elected 1916 Rollamo Board were elected last week. Lucien Erskine, '16, is Editor-in-Chief, and James J. Allen, '16, Business Manager. The other officers are: K. V. B. Rossman, '17, Secretary, and G. E. Johnson, '16, Treasurer.

Y. M. C. A. ELECTS OFFICERS.

The Young Men's Christian Association has elected the following officers for next year: J. L. Head, President; G. E. Ebmeyer, Vice-President; H. J. Schiermeyer, Secretary and Treasurer; Prof. C. R. Forbes, Faculty Advisor. The Advisory Board is composed of C. R. Forbes, J. L. Head, G. E. Ebmeyer, H. J. Schiermeyer, G. E. Johnson, Fred Grotts and C. W. Hippard.

**After the evening's study is done
drop into**

The Elite

for a Sandwich or an Oyster Stew.

C. TRENKEL, - Prop'r.

THE MISSOURI MINER.

SOPHOMORE HAPPENINGS.

"Kilowatt" Heimberger tried hard to stop a lathe with his finger but didn't have much luck.

Hugh Rice has been seen at the north end of Pine street quite frequently. We wonder who it is?

Ebmeyer and Walsh played ball with the St. James second team last Sunday and won a regular birth on the nine.

We wonder why Steele wears a red tie so often?

Cooper spent several days on the Gasconade last week.

What kept Ambler from responding to the numerous calls for him at the benefit show Wednesday night? There must have been a lady in the case.

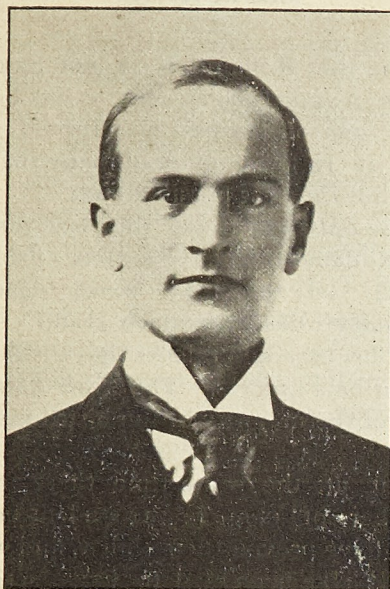
Evans certainly stepped out and gave the natives a treat last Sunday. He wore a straw hat and a pair of white gum shoes.

K. V. B. Rossman recently distinguished himself by working a Calculus problem.

We again call attention to several banquet tickets that were used but not paid for. Kindly come across.

Dale can be seen leaving East 12th Street each night at 12:30. The other night a certain party happened to be passing just as Dale was leaving and—

A number of Sophs took a trip to Salt Peter Cave last Sunday and from their appearance on returning must have enjoyed the refreshments and scenery immensely.



VICTOR HUGO GOTTSCHALK.

The 1915 Rollamo is dedicated to Victor Hugo Gottschalk, Professor of Chemistry. Professor Gottschalk is well worthy of the honor bestowed upon him. During his long association with the School of Mines, first as a student, instructor, and then as professor, he has always labored for the good of the school. Along with his regular duties he has always had time to lend advice and assistance to any student enterprise. The dedication of the 1915 Rollamo to him by the Rollamo Board is a fitting tribute to his loyalty.

Commencement Ball

FULL DRESS SUITS

FOR RENT AT

Heller's Clothing House.

THE MISSOURI MINER.

THE MISSOURI MINER

A weekly paper published in the of interest the Alumni, Students, and Faculty of the Missouri School of Mines and Metallurgy, Rolla, Mo.

Entered as second class matter April 2, 1915, at the post office at Rolla, Missouri, under the Act of March 3, 1879.

BOARD OF MANAGERS

FRED GROTTTS, G. E. JOHNSON, J. L. HEAD.

STAFF

General Manager, - - - FRED GROTTTS.
Editor, - - - J. L. HEAD.
Business Manager, - - G. E. JOHNSON.
Associates, W. H. MCCARTNEY, J. J. DOWD,
J. J. DOYLE, WILSON BAYHA.

Published Every Friday.

RATES: { Single Copies, - - - 5 Cents.
Per Month, - - - 15 Cents.

All copy must reach the office before Wednesday noon each week

FINE

WATCH REPAIRING

We want to impress you with the fact that we can do your Watch and Jewelry repairing more satisfactorily and with less delay than any one in town.

Your patronage will be very much appreciated.

S. B. BENTLEY.

EDITORIAL.

The 1915 Rollamo is in our hands. It is a good book, and, as has been said, one of the best ever turned out. But it is the opinion of many that it was not the best possible book.

The only way to get this best possible Rollamo is to have a more efficient board. Of the 1915 board, Editor Gammeter deserves much credit. He gave his time and talents that the book might be a success. The same can be said of the majority of the board members.

But at the same time there are a number of men in the student body who have proven their ability, and who would have been glad to have served on the board and made it a better book. But these men belong to organizations which were already represented on the board, and so they were kept out of a place by the constitution of the Rollamo Board, the text of which is familiar to you all.

How much longer is the student body of the School of Mines going to stand for the present inefficient method of electing the board? What difference is it going to make whether the members of the Rollamo Board all belong to one eating club, or one fraternity, if they are the best ones in school for the place?

The Rollamo goes to high schools, and other colleges and universities, to our alumni and to our homes. By it we are judged. Therefore, we should endeavor to put out the best possible Rollamo.

This "Best Possible Rollamo" will never be gotten out until the student body of the Missouri School of Mines gets "Big" enough to forget its petty inter-organization troubles, and elects her most efficient men to the board, regardless of the club or fraternity to which they may belong.

THE MISSOURI MINER.

PERSONALS.

The Sigma Nus defeated the Kappa Sigs last Friday, 16-7.

Raul Chavez, '18, spent Saturday and Sunday in St. Louis.

Coach Dennie and his Miners leave Saturday morning for St. Louis where they will play Concordia Seminary.

Dr. A. L. McRae, Prof. H. T. Mann and Prof. C. Y. Clayton left this week for St. Louis where they will be in charge of the seniors who will inspect the metallurgical and power plants in and about St. Louis.

Dr. G. H. Cox and Prof. C. R. Forbes have returned, having completed the geology and mining work of the senior trip.

Prof. C. L. Dake of the geology department has an article in the May Bulletin of the American Institute of Mining Engineers. The title of the article is "The Formation and Distribution of Residual Iron Ores."

The Corsairs play the Bonanzas Saturday afternoon. This is one of the final games in the Allison Cup Series and should be hotly contested.

F. W. Smith of the Electric Air-dome gave a benefit show at the air-dome Wednesday evening to help raise funds to defray the expenses of the Miner-Nebraska Indians games of baseball. Mr. Smith will also give another show for the same cause next Wednesday.

F. S. Elfred, of St. Joseph, Mo., was the guest of his son, F. S. Elfred, Jr., at the Kappa Alpha House Sunday.

A new granitoid walk is being put in between Parker and Norwood Halls, supplanting the old wooden one.

The Kappa Sigma Fraternity entertained informally at their Chapter House Friday evening.

R. M. Clayton, of Hannibal, Mo., spent Sunday in Rolla as the guest of his brother, Prof. C. Y. Clayton.

Greene Erskine, A. L. Kaplan and F. D. James left for St. Louis Friday for the metallurgical and power plant part of the Senior trip.

Huber's on the Gasconade.

Spring is here, the river is ideal for canoeing and boating, and fishing is good.

RATES:

Adults, \$1.50 per day, or \$9.00 per week.

Children under twelve years of age, half price.

Large, roomy, comfortable fishing boats, can be rented at fifty cents per day, and minnows purchased at seventy-five cents per hundred.

Address

C. N. HUBER, Jerome, Mo.

Dry Goods and Groceries

*Low Prices,
Good Service,
Courteous Treatment*

SCHUMAN BROS.

Smail

announces the opening of his
SODA FOUNTAIN.
Plain and Fancy Drinks.
Pure Ice Cream.

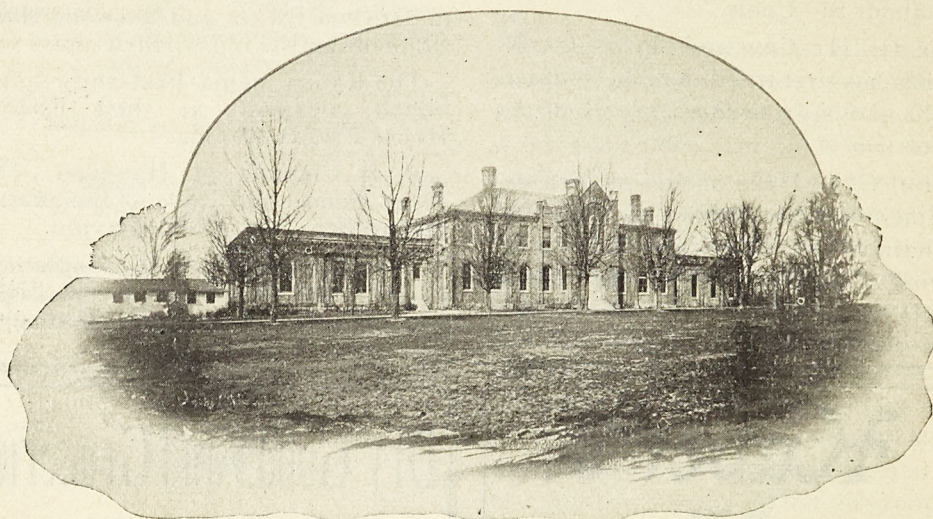
The Smoke Shop.

THE MISSOURI MINER.

Missouri School of Mines

Rolla, Missouri

Department of University of Missouri



CHEMICAL LABORATORY.

Four Year Course Leading to Degrees in

Mining Engineering

Metallurgy

Coal Mining

Civil Engineering

Mining Geology

General Science

Special Short Courses Offered. Course in Mine Rescue Work. Thoroughly equipped laboratories. Up-to-date in everything.

For Catalogue, Address

Missouri School of Mines,

Rolla, Missouri.

THE MISSOURI MINER.

CRIBBING.

Next Tuesday morning final examinations begin at M. S. M. For this reason a few words about cribbing might not be out of place at this time. Although cribbing has been discussed before, both in the Miner and in the mass meetings, the fact remains that a large number of students here are of the opinion that cribbing is alright if one is not caught at it. Many seem to feel that it is no more dishonorable to crib in an examination than to obtain help in the preparation of a day lesson before the class. Of course that is a most peculiar view of the matter, but let us lay aside the moral view of the question for a moment. What good is it going to do you or me to pass up our work here by cribbing? We come to M. S. M. supposedly to learn things that we can later take out into the world and apply in solving problems of our chosen profession. If we do not learn these things, but pass our examinations by cribbing, we ourselves are the losers in the long run. The day will come when there will be no neighbor to copy from, and if we cannot solve the problems that come up, the boss will be looking for another man. It would be far better for you or me to spend five years at college and learn our work than to graduate in four years, apparently knowing a lot of things that we don't. There is nothing clever about copying from some one else. Any one can do that, though none can do it without some one else knowing it—usually the instructor and the majority of the class—and we should value the respect of those around us so highly that we would not wish to be seen doing dishonest work.

So let us remember when we are tempted to crib in our finals, that if we yield, we are really cheating no one half so much as we are cheating ourselves.—Contributed.

ALUMNI NOTES.

Technical Articles by M. S. M. Men.

In the May issue of the Metallurgical and Chemical Engineering Magazine appears an article on "Solution Control in Ferric-Chloride Leaching of Sulphide Copper Ores," by F. N. Flynn and Roger H. Hatchett. Mr. Hatchett graduated from M. S. M. in 1899, and is now smelter metallurgist for the Arizona Copper Co., Ltd., Clifton, Arizona.

F. W. Cody, '13.

F. W. Cody, '13, who has been connected with the Arizona Copper Co., at Clifton, Ariz., is visiting Rolla and St. James. He reports that mining conditions are improving in the southwest, some of the larger companies operating at full capacity.

R. B. Caples, '10.

R. B. Caples, '10, research chemist of the Washoe Smelter, Anaconda, Montana, has been visiting his old home at Glasgow, Mo. While in St. Louis last Wednesday on his way back to work he met Dr. A. L. McRae and a number of the seniors.

Home, Sweet Home, January 30, 1915.

My Dear Son:—

I received your letter about that awful fire in Rolla and am so much relieved to know that you escaped with only a few bruises and the loss of your clothes, books, instruments, etc.

Just as soon as you get located, be sure and have B. H. RUCKER write fire insurance to cover everything you have, and if you can spare the amount from your allowance, you ought to take a little life insurance also.

Yours affectionately,
MOTHER.

HELLO!

Meet me at

Charlie's Billiard Hall,
and I'll bowl you a game.

THE MISSOURI MINER.

PANTHERS DEFEAT MINERS IN WHIRL- WIND FINISH.

Continued from First Page.

was in the running all of the time, and all of the events were productive of such hot fights that each of the entrants was obliged to extend himself.

The quarter-mile probably was the prettiest race on the card. Heman, the Miner captain, who had been backed to win the event, led out from the mark, Schmid, the Drury runner, hanging as they rounded the first turn, and Garrett also of Drury back in the crowd.

As the field rounded into the backstretch, Schmid was in third place, but began to lengthen out and coast down the stretch, holding his distance. As the runners neared the turn, the Panther racer forged even and rounded into the stretch leading, with Garrett pulling out of the bunch into second place and thus they finished with Heman tiring rapidly as they hit the tape.

Prewitt Roberts, an old Missouri man, refereed the meet; Coach Kelly, Rolla; Vance Criss, high school and Clarence Marr, Drury, acting as timers.

Arenson, of the Columbian Athletic Club, St. Louis, a sprinter of national fame, was one of the judges of the finish.

The meet of yesterday was the only meet of the year for the Miners, but Normal next Saturday goes to Pittsburg, Kans., for a dual scrap with Pittsburg Normal, while the Panthers will fight it out with Washington University in St. Louis.

The detailed summary follows:

100-yard dash—Dover, Rolla, first; Greer, Normal, second; Camp, Normal, third. Time, 10 seconds.

Mile run—Maher, Rolla, first; Murphy, Rolla, second; Theodore, Drury, third. Time, 4 minutes, 51 seconds.

Shot put—Marr, Drury, first; Treat, Normal, second; Greer, Normal, third; distance, 38 feet, 9½ inches.

220-yard dash—Dover, Rolla, first; Garrett, Drury, second; Camp, Normal, third. Time 23 1-5 seconds.

120-yard high hurdles—Marr, Drury, first; Kamp, Rolla, second; Planshon, Normal, third. Time, 16 4-5 seconds.

440-yard run—Schmid, Drury, first; Garrett, Drury, second; Heman, Rolla, third. Time, 53 4-5 seconds.

Two mile run—Maher, Rolla, first; Boyd, Normal, second; Dowd, Drury, third. Time, 2 minutes, 8 4-5 seconds.

Pole vault—Peterson, Rolla, first; T. Hayes, Normal, second; Planchon, Normal, third. Height, 10 feet.

220-yard low hurdles—Hayes, Drury, first; Marr, Drury, second; Planchon, Normal, third; time, 28 seconds.

Discus throw—Ruffin, Drury, first; Greer, Normal, second; Dover, Rolla, third. Distance, 107 feet, 9½ inches.

High jump—Marr, Drury, first; New, Normal, second; Dover, Rolla, third. Height, 5 feet 8 inches.

Broad jump—Hayes, Drury, first, distance, 19 feet 36 inches; Dover, Rolla, second, distance, 18 feet 2 inches; Barton, Rolla, third, distance, 17 feet 6 inches.

One-half mile relay—Rolla, (Neustaedter, Barton, Dover, Heman) first; Normal (Camp, Greer, L. Bernard, Elkins), second; Drury, (Schmid, Carroll, Marr, Garrett) third. Time, 1 minute 39 seconds.

J. A. SPILMAN

for

HARDWARE,

HARNESS,

WAGONS,

STOVES,

SADDLES,

TILING,

TINWARE,

IMPLEMENTS,

FORDS,

CUTLERY,

BUGGIES,

WIRE,

The largest and most complete line of **HARDWARE** in
Phelps County, of best quality and low prices.

When in need of anything in my line, it
pays you to call.

J. A. SPILMAN.